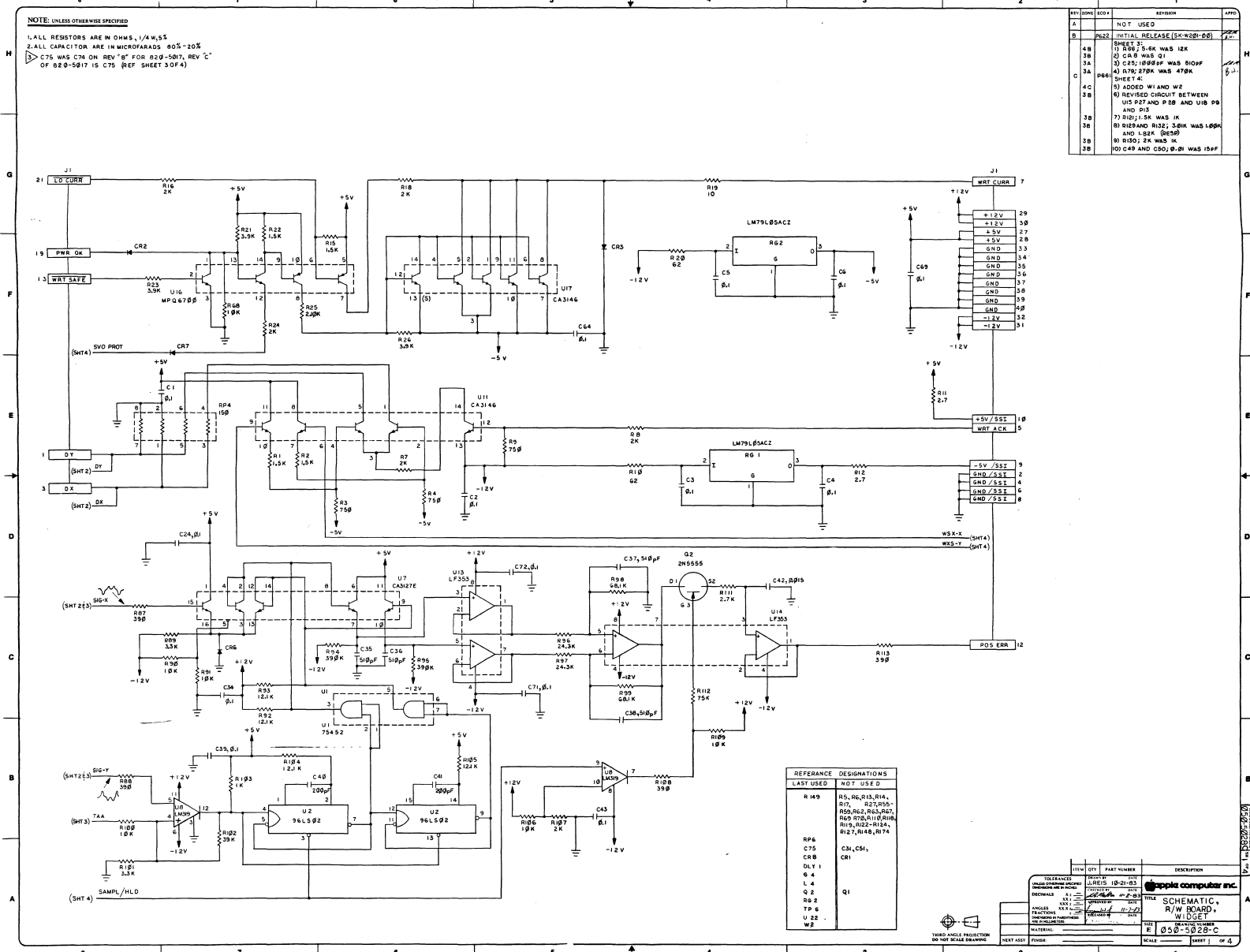


NOTE: UNLESS OTHERWISE SPECIFIED
 1. ALL RESISTORS ARE IN OHMS, 1/4W, 5%
 2. ALL CAPACITORS ARE IN MICROFARADS 80% - 20%
 > C75 WAS C74 ON REV 'B' FOR R29-50R7, REV 'C'
 OF 829-50R7 IS C75 (REF SHEET 3 OF 4)



REV	DATE	BY	DESCRIPTION
A			NOT USED
B	05/22		INITIAL RELEASE (SH-W201-00)
C	06/01		SHEET 1: 1) R52; 5.6K WAS 12K 2) CR8 WAS Q1 3) C55; 1000PF WAS 810PF 4) R70; 270K WAS 470K SHEET 4: 5) ADDED W1 AND W2 6) REVISED CIRCUIT BETWEEN U15 P27 AND P38 AND U16 P5 AND P13 7) R101; 1.5K WAS 1K 8) R103 AND R132; 30K WAS 1.00K AND 1.02K (RES9) 9) R100; 2K WAS 1K 10) C49 AND C50; 0.01 WAS 100PF

REFERENCE	DESIGNATIONS
LAST USED	NOT USED
R 409	R5, R6, R13, R14, R17, R27, R55, R56, R62, R63, R65, R69, R70, R112, R118, R119, R122, R124, R127, R148, R174
RP6	C31, C51
C75	CR1
DLT 1	
Q 4	
L 4	
Q 2	Q1
DS 2	
TP 4	
U 22	
WB	

THIRD ANGLE PROJECTION
 DO NOT SCALE DRAWING

ITEM	QTY	PART NUMBER	DESCRIPTION
SCHEMATIC R/W BOARD W/DGE			
TITLE: SCHEMATIC R/W BOARD W/DGE			DATE: 0500-0028-C
MATERIAL:			SCALE:
FINISH:			SHEET 1 OF 4