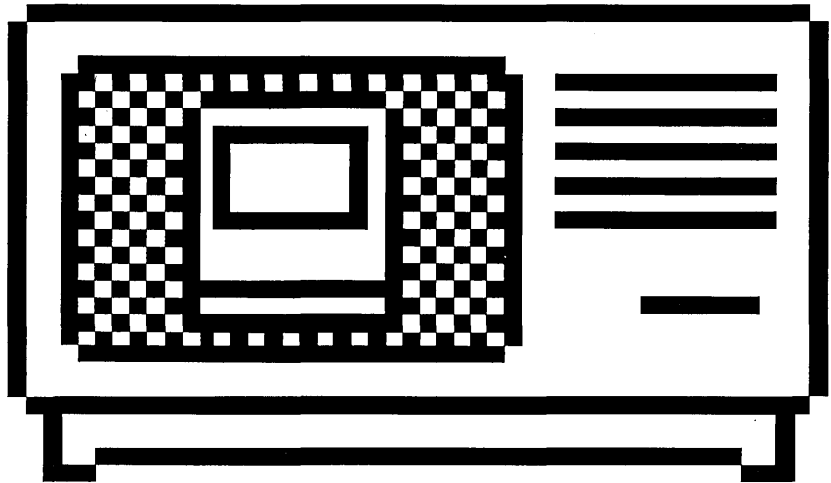




Macintosh™ XL Screen Kit



Copyright

This manual and the software described in it are copyrighted with all rights reserved. Under the copyright laws, this manual or the software may not be copied, in whole or part, without written consent of Apple, except in the normal use of the software or to make a backup copy. The same proprietary and copyright notices must be affixed to any permitted copies as were affixed to the original. This exception does not allow copies to be made for others, whether or not sold, but all of the material purchased (with all backup copies) may be sold, given, or loaned to another person. Under the law, copying includes translating into another language or format.

You may use the software on any computer owned by you, but extra copies cannot be made for this purpose. For some products, a multiuse license may be purchased to allow the software to be used on more than one computer owned by the purchaser, including a shared-disk system. (Contact your authorized Apple dealer for information on multiuse licenses.)

©1985 Apple Computer, Inc.
20525 Mariani Ave.
Cupertino, CA 95014
(408) 996-1010

Apple and the Apple logo are registered trademarks of Apple Computer, Inc.

Macintosh is a trademark of McIntosh Laboratory, Inc., and is used with express permission of its owner.

Written by Lynnea Johnson of Apple Macintosh User Education.

Simultaneously published in the USA and Canada.

Reorder Apple Product #MA6G0001

Limited Warranty on Hardware

APPLE COMPUTER, INC. ("Apple") warrants the Macintosh XL Screen Modification Kit against defects in materials and workmanship for a period of NINETY (90) DAYS from the date of original retail purchase.

If you discover a defect, Apple will, at its option, repair, replace, or refund the purchase price of the product at no charge to you, provided you return it during the warranty period, transportation charges prepaid, to the authorized

Apple dealer from whom you purchased it or to any other authorized Apple dealer within the country of original retail purchase. (You can obtain additional information from Apple directly at the address printed in the inside front cover of this manual.) Please attach your name, address, telephone number, a description of the problem and a copy of the bill of sale bearing the appropriate Apple serial numbers as proof of date of original retail purchase, to each product returned to warranty service.

This warranty applies only to hardware products; Apple software media and manuals are warranted pursuant to a separate written statement.

This warranty does not apply if the product has been damaged by accident, abuse, misuse or misapplication, has been modified without the written permission of Apple, or if any Apple serial number has been removed or defaced.

ALL IMPLIED WARRANTIES, INCLUDING IMPLIED WARRANTIES OF MERCHANTABILITY AND FITNESS FOR A PARTICULAR PURPOSE, ARE LIMITED IN DURATION TO NINETY (90) DAYS FROM THE DATE OF THE ORIGINAL RETAIL PURCHASE OF THIS PRODUCT.

THE WARRANTY AND REMEDIES SET FORTH ABOVE ARE EXCLUSIVE AND IN LIEU OF ALL OTHERS, ORAL OR WRITTEN, EXPRESS OR IMPLIED. No Apple dealer, agent, or employee is authorized to make any modification, extension, or addition to this warranty.

APPLE IS NOT RESPONSIBLE FOR SPECIAL, INCIDENTAL, OR CONSEQUENTIAL DAMAGES RESULTING FROM ANY BREACH OF WARRANTY, OR UNDER ANY LEGAL THEORY, INCLUDING LOST PROFITS, DOWNTIME, GOODWILL, DAMAGE TO OR REPLACEMENT OF EQUIPMENT AND PROPERTY, AND ANY COSTS OF RECOVERING, REPROGRAMMING OR REPRODUCING ANY PROGRAM OR DATA STORED IN OR USED WITH APPLE PRODUCTS.

Some states do not allow the exclusion or limitation of implied warranties or liability for incidental or consequential damages, so the above limitation or exclusion may not apply to you. This warranty gives you specific legal rights, and you may have other rights which vary from state to state.

Macintosh XL

Screen Kit



Contents

3	Introduction
3	Here's What You Need
3	The New MacWorks XL
4	The MacWorks System Disk
4	A New MacPaint
5	Part 1: Installing MacWorks XL
5	Replacing MacWorks
5	Creating and Using a MacWorks-Only Hard Disk
10	Part 2: About the New Finder
10	Full Capabilities in Any View
11	Dragging Icons
11	Naming Icons
11	Ejecting Disks
12	Menus
17	About the Choose Printer Desk Accessory
18	Part 3: About the Font and Desk Accessory Mover
18	Using the Font/DA Mover to Add or Remove Fonts or Desk Accessories
23	Part 4: About Parallel Printer Install

Introduction

Your dealer has modified your Macintosh™ XL computer so text and pictures appear as they do on the Macintosh 128K and 512K screens while keeping the larger XL screen size.

Most Macintosh applications that allow you to resize the document window can take advantage of the larger screen size of the Macintosh XL. Use the size box to extend the application's window to its fullest.

The Macintosh XL with a modified screen works with a MacWorks™-only hard disk, but not with a hard disk shared between Lisa® 7/7 and MacWorks or with the Workshop. If you have a shared hard disk, remove all the Lisa 7/7 files you want to keep and follow the installation instructions on page 5.

Here's What You Need

These three disks come with your Macintosh XL Screen Kit:

MacWorks XL

MacWorks System Disk

MacPaint™

The New MacWorks XL

The modified Macintosh XL requires a new version of MacWorks, called MacWorks XL. Your dealer may already have installed the new version of MacWorks. If not, see the installation instructions on page 5.

The MacWorks System Disk

The MacWorks System Disk has the same improved system files shipped with MacWorks XL. Dragging the System Folder onto your hard disk installs version 4.1 of the Finder, adds the Choose Printer desk accessory to the Apple menu, updates the System file, and replaces the existing Imagewriter file with an improved one.

The Font/Desk Accessory Mover on the new System Disk lets you move both fonts and desk accessories among disks (see page 18 for instructions). The Parallel Printer Install application lets you install a parallel printer driver in your System Folder to use with MacWorks (see page 23 for instructions).

A New MacPaint

The MacPaint disk contains version 1.5 of MacPaint. Replace your older version of MacPaint with this new one. The menu command Fat Bits, in the older versions of MacPaint, won't work properly with the modified screen.

Part 1

Installing MacWorks XL

Use Hard Disk Install on the MacWorks XL System Disk to

- Replace any version of MacWorks on an existing MacWorks-only hard disk with MacWorks XL.
- Create a MacWorks-only hard disk.

Replacing MacWorks

To replace MacWorks on a MacWorks-only hard disk:

- **Insert the Macintosh XL System Disk and open Hard Disk Install.**
- **Click Replace MacWorks unless you want to reinitialize the hard disk, erasing all information.**
- **Follow the instructions on the screen until the installation process is complete.**

If you've just replaced a version of MacWorks that's earlier than MacWorks XL (Finder version 4.1), you also may want to upgrade your system files with MacWorks XL's improvements. Drag the System Folder on the MacWorks System Disk to the hard disk—replacing the old system files with the new. See pages 10 through 16 for a description of the new features.

Creating and Using a MacWorks-Only Hard Disk

Before you start, make sure you have either a built-in hard disk (Lisa 2/10 systems) or an external disk connected to the built-in parallel connector on other Lisas. (See the *Lisa 2 Owner's Guide* for instructions on attaching the external hard disk.)

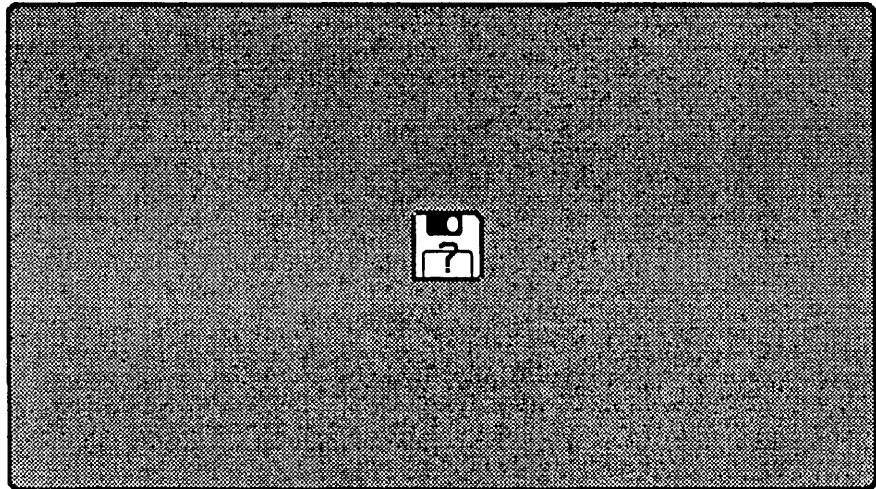
- **If the hard disk has existing documents you want to keep, copy them to 3 1/2-inch disks.**

See "Backing Up Documents and Disks" in Chapter 4 of the *Lisa Office System* manual.

- **If the On/Off button is lit, press it once, and then wait for the light to go off.**

- **Insert the MacWorks XL disk.**
- **Press the On/Off button once to switch the Lisa on. When you hear the first click, or popping sound, immediately press and hold down the Apple key and type the number 2. Be sure you press the 2 on the main keyboard, not the 2 on the numeric keypad.**

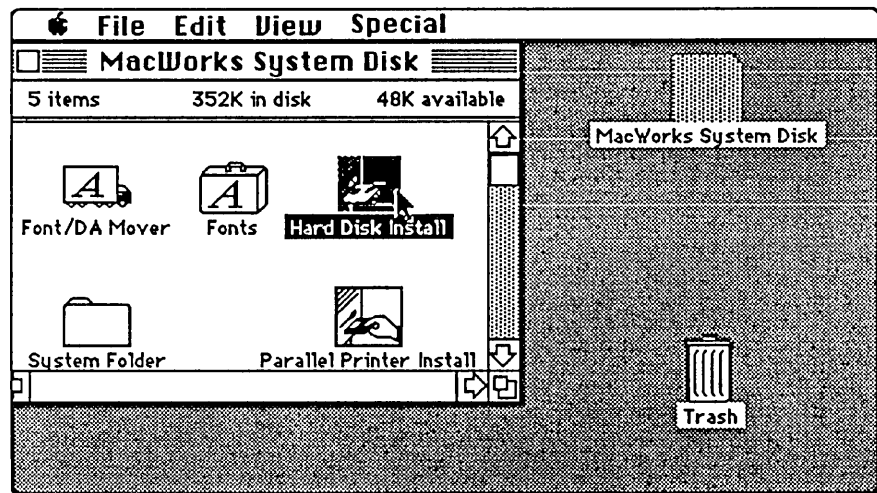
This tells your Lisa to start up using the 3 1/2-inch disk inserted in the disk drive, rather than any hard disk you may have set as the startup disk. The Lisa goes through a short self-test. After that, the disk is ejected, the screen darkens for a while, and then an icon representing a disk appears, with a blinking "X." The "X" quickly changes to a question mark, which means your "Macintosh XL" is ready for you to insert a Macintosh disk.



- **Remove the ejected MacWorks XL disk, and then insert the MacWorks XL System Disk.**

A few seconds later, the MacWorks XL System Disk icon appears on the desktop.

- **Open the MacWorks XL System Disk window by clicking the Icon to select it and then choosing Open from the File menu, or by double-clicking the Icon.**



- **Open Hard Disk Install.**

A dialog box appears with one of the following messages:

If the hard disk is new, the dialog box tells you the hard disk (either built-in or external) hasn't been initialized for Macintosh.

If the hard disk has Lisa 7/7 or the Lisa Workshop installed, the dialog box tells you that and lets you cancel, initialize the disk for MacWorks only (erasing everything), or share the disk between MacWorks and Lisa 7/7 or Workshop. Because the modified Macintosh XL works only with a Macintosh-only hard disk, you must click Initialize (or Cancel to keep the hard disk as it is).

If MacWorks is already on the hard disk, the dialog box gives you a chance to initialize the disk, replace MacWorks, or cancel.

- **Click the Initialize button.**

Clicking this button erases any existing documents on the disk, so first make sure you've copied any documents you want to keep onto 3 1/2-inch disks.

Clicking Initialize starts the process of installing MacWorks on the hard disk and creating a MacWorks-only disk. A series of dialog boxes guides you through the process. When you're finished, your Lisa will start up directly from this MacWorks-only disk whenever you turn it on.

- **Name the disk by typing.**

You can keep the preset name "Hard Disk" or type any name you want.

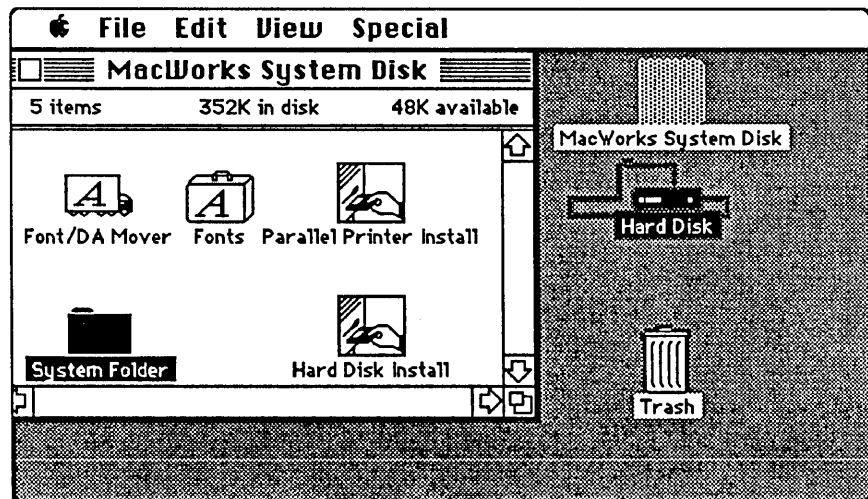
- **Click the OK button or press the Return key.**

Another dialog box appears, asking you to copy the System Folder to the hard disk.

- **Click OK.**

An icon representing the hard disk now appears on the Macintosh desktop. (The next time you start MacWorks the icon will look like a hard disk rather than a 3 1/2-inch disk.)

- **Copy the Macintosh System Folder to the hard disk by dragging its icon to the hard disk icon or window.**



This is an important step that gives MacWorks the information it needs to run Macintosh software properly from the hard disk.

- **Close the System Disk window and then eject the System Disk by selecting It and choosing Eject from the File menu.**

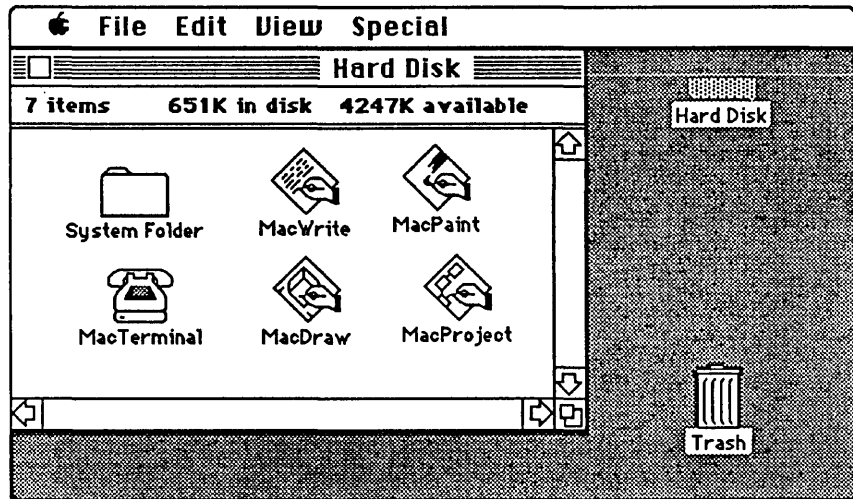
The next time you start the Macintosh XL, the Macintosh desktop and an icon representing the hard disk will appear automatically, available to store Macintosh applications and documents.

- **Insert the Macintosh application disk you want to use.**

You can copy most applications to the hard disk (by dragging their icons to the hard disk icon or window). The next time you start your Macintosh XL with MacWorks, the icon representing the hard disk will appear automatically on the Macintosh desktop. You can open the icon and start applications from the hard disk. Some copy-protected applications require inserting the original application disk each time you want to use that application. You can, however, save all documents to the hard disk.

You can quickly restart MacWorks while you're using it, without going through the entire startup process. To restart from the hard disk, hold down the Apple key while you press the On/Off button. Be sure to hold the key down until the system restarts.

If you should ever want to have your Macintosh XL start up from a 3 1/2-inch disk instead of the hard disk, hold the Option key down, and press the On/Off button. The disk with the blinking question mark appears. Then you can insert any Macintosh startup disk.



Part 2

About the New Finder

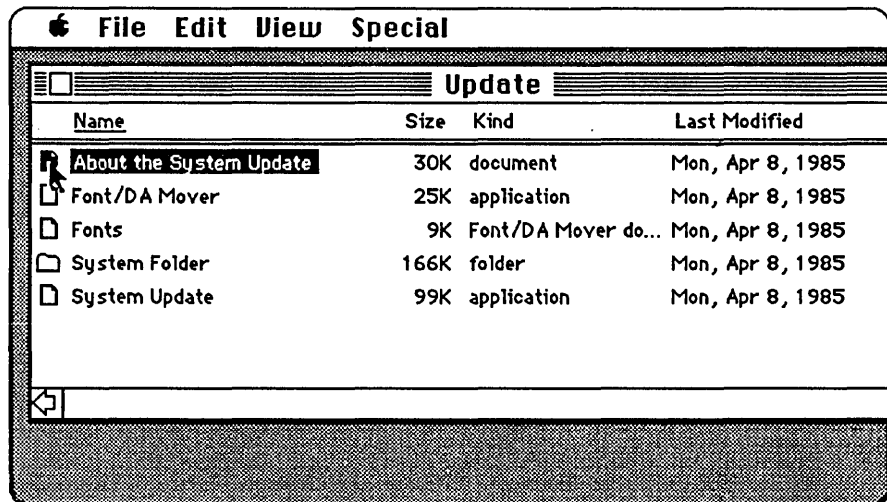
The Finder is the application you use to manage your Macintosh desktop. The new Finder (version 4.1) is faster than the old version and it works better with hard disks. It also has some added features such as the MiniFinder, which lets you move quickly among the applications and documents you use most often. The new Finder works with any existing applications and documents without your having to make any changes to them.

Full Capabilities in Any View

With the old Finder you could duplicate, move, rename, or discard documents, folders, and applications only when directory windows were arranged by icon. With the new Finder you can do any of your desktop work with your directories in any arrangement—by icon, name, date, size, or kind. In any of the text views (any view other than by icon), a small icon appears to the left of the document name. Click, double-click, drag, or Shift-click this icon just as you would its counterpart in an icon view of the directory.

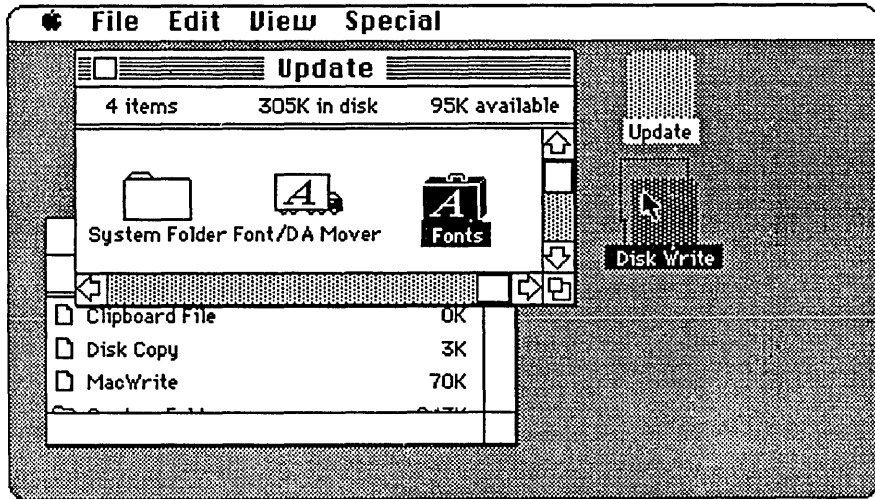
To rename a document when a directory isn't arranged by icon, select the name and edit it just as you edit icon names in an icon view or on the desktop.

Directories in text views also indicate (with a small padlock on the right) which of your documents or folders are locked. If you lock a folder or if you physically lock the disk, the padlock appears in the top left corner of the disk or folder window just below the title bar.



Dragging Icons

In the past, you couldn't drag an icon to a "hollow" icon; you had to drag to the icon's directory window. Now you can drag an icon either to a directory window or to the hollow icon that remains behind when you open an icon. If you drag to a directory window, you can place the icon wherever you want it; if you drag to a hollow icon, the Finder will place the icon in the next available spot.



Naming Icons

In the past, typing renamed any selected icon, whether you had explicitly clicked it or not. Now you click explicitly on an icon or icon name to edit its name, even if the icon is already selected. This means you're less likely to rename disks accidentally. There are a couple of exceptions: When you create a new folder by choosing New Folder, or when you duplicate or move a document, folder, or application, typing renames what's selected, without your having to click it first. (This is true in text views as well.)

If you give an icon a name that's the same as an icon you just dragged to the Trash, the Trash is automatically emptied, so you can use the name again.

Ejecting Disks

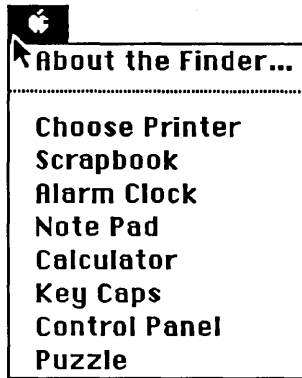
Now choosing Eject always ejects a disk (inserted in the disk drive), even if its icon is not selected.

If you want your Macintosh to forget about a disk (and not ask for it again), drag the disk to the Trash. This doesn't erase the disk; it just ejects it and removes the icon from the desktop. You can't drag the current startup disk to the Trash.

You can't edit an ejected disk's comment box (in the Get Info window) or that of any of the documents on that disk.

Menus

The Menu



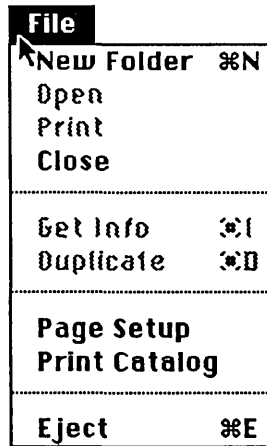
About the Finder

The About the Finder command in the Apple menu now tells you the memory size of the Macintosh you're using. (Memory used for MacWorks is subtracted on a Macintosh XL.)

Choose Printer Desk Accessory

The Choose Printer Desk Accessory is available in the Apple menu both in the Finder and in any application you start using an updated startup disk. See "About the Choose Printer Desk Accessory" on page 17.

File Menu



New Folder

There's a new command—New Folder—in the File menu. Choosing this command creates a new folder (so you no longer have to duplicate an existing folder). You can rename the folder immediately after you create it, by typing the name you want. Rename it any other time by selecting the name or icon and editing it in the usual way.

New folders appear in the frontmost window on the desktop. The command is dimmed if no windows are open.

If you worked through the tutorial in Chapter 1 of *Macintosh*, the owner's guide, note that we've put an empty folder on the enclosed disks for you to duplicate as the tutorial describes. With the new Finder, just choose New Folder when you want an empty folder.

Page Setup

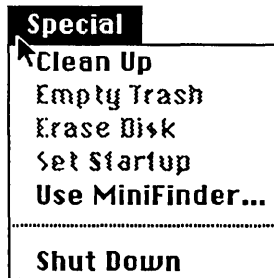
The Page Setup command lets you set up the orientation and size of directories you print using the Print Catalog command. In the Finder, this command works only with the Print Catalog command; a document's page setup is controlled by the Page Setup command in the application.

Print Catalog

There's a new Print Catalog command in the File menu that prints the contents of the active directory window—in whatever view you have the directory arranged.

Close All and Put Back have been removed from the File menu.

Special Menu



Use MiniFinder

To move quickly between applications, you can now place the applications and documents you use most often in the MiniFinder. Here's how to use the MiniFinder:

- **In the Finder, select what you want to place in the MiniFinder.**

You can select up to a total of twelve mixed or matched documents and applications. You might, for example, select the applications you use most often, the documents you're currently working on, or both. (You can easily change what's in the MiniFinder whenever you want.)

The documents and/or applications you select must all be in the same directory window. Drag them there before you select them if necessary. Any applications you need to work on your MiniFinder documents must be on the same disk as the documents. You can move between disks in the MiniFinder.

- **Choose Use MiniFinder from the Special menu.**
- **Click Install.**

The next time you start your Macintosh using this disk or quit an application on this disk, the MiniFinder will appear instead of the usual desktop. (The spatial order of the applications and documents in the MiniFinder corresponds to their order in the Finder.)

- **Open an application or document that's installed in the MiniFinder by selecting it and clicking the Open button or by double-clicking the icon.**

You can also click any of the other buttons on the right. Clicking Finder (or pressing the Enter key) takes you back to the Finder. Open Other opens applications that aren't installed in the MiniFinder (as well as those that are installed), whether they're on the same or other disks. Clicking Shut Down ejects any inserted disks and restarts the Macintosh.

- **To change what's in the MiniFinder, click the Finder button to return to the Finder, select the applications and documents you want in the MiniFinder, choose Use MiniFinder, and click Install.**
- **To stop using the MiniFinder, return to the Finder, choose Use MiniFinder, and click Remove.**

Dragging the MiniFinder icon to the Trash also removes the MiniFinder.

You can install the MiniFinder on any of your disks that contain applications, even if they're not startup disks. When you start up your Macintosh, it uses any MiniFinder it can find, even if it's not on the startup disk.

Shut Down

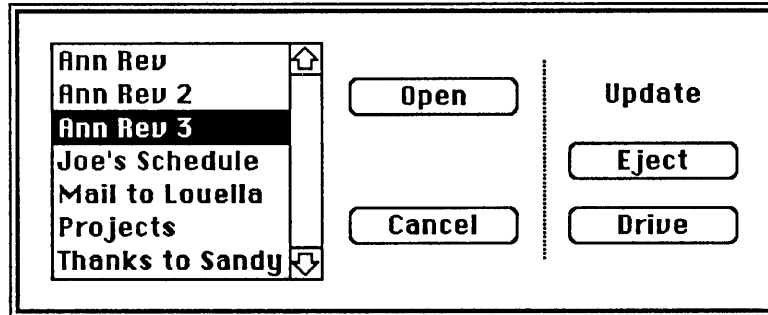
There's another new command in the Special menu. Choosing Shut Down ejects any inserted disks (first saving any necessary information) and then restarts the Macintosh. This is a shortcut for when you want to restart the Macintosh using a different startup disk. On a Macintosh XL, choosing Shut Down turns the power off, but not on again.

Lost Folders

If the Finder has an error and can't reconstruct your folders exactly as they were, the top level of the folder hierarchy will be remembered (although the names will be lost and the folders will be renamed "Unnamed #1, #2," and so forth).

The Open... Dialog Box

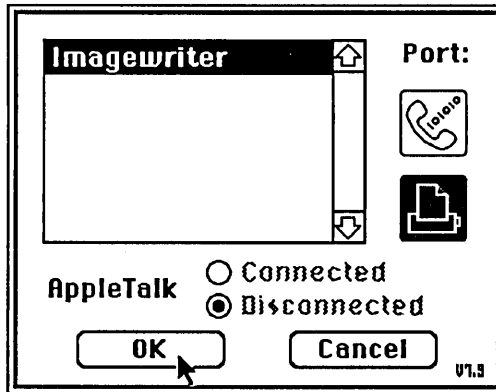
When you choose Open within an application, a list of files appears for you to select from. In the past, you could type a character to select the first document starting with that character (or the first document to follow in alphabetical order). Now as you continue to type additional characters, any file that matches the characters you type is found and selected. If you pause while typing, the Finder considers the next character to be a new request, rather than a continuation of your first request. The keyboard touch (which you set in the Control Panel) determines how long the Finder waits for additional characters in a single request.



About the Choose Printer Desk Accessory

The Choose Printer desk accessory lets you print from any attached printer for which there is a printing resource file on the current startup disk. (A printing resource file is a system file that usually has the same name as the printer itself.)

If you're using an Imagewriter™ printer, you probably won't use the Choose Printer desk accessory. The Macintosh is preset to print documents on an Imagewriter connected to the Printer port (Serial port B on a Macintosh XL). You'll use Choose Printer only if you connect the AppleTalk™ Personal Network or another piece of hardware to the Printer port and want to designate the Modem port for the Imagewriter.



Printers other than the Imagewriter, such as the LaserWriter™, include disks containing a Printer Install application that installs the printing resource file (sometimes called a “driver”) for that printer. Once you install the printer on a disk and physically connect it to your Macintosh, it appears as a possible printer to use when you choose Choose Printer.

Part 3

About the Font and Desk Accessory Mover

This update replaces “Using Font Mover to Claim More Space on the Disk” in Chapter 3 of *Macintosh*, the owner's guide.

As new fonts and desk accessories become available, you may want to add some of them to your startup disks. But fonts and desk accessories can take up a fair amount of space on a disk, so you probably won't want your complete set on every startup disk. The Font and Desk Accessory Mover (Font/DA Mover) is an application for copying fonts and desk accessories among disks or removing them from disks.

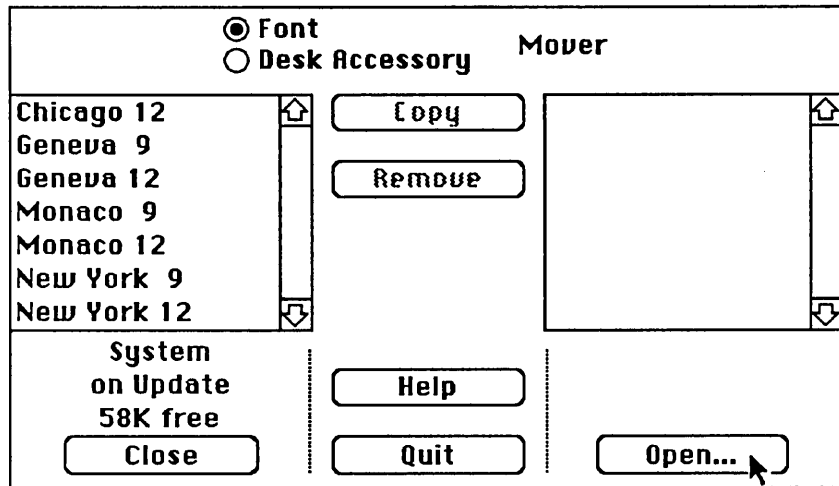
The Apple and Fonts menus in any application always contain the desk accessories and fonts in the current startup disk's System file (a file in the System Folder). You can also store collections of fonts and accessories in special font and desk accessory files the Macintosh uses just for that purpose. When you want to use the fonts or accessories in those files with an application, you use Font/DA Mover to add them to the System file of the startup disk you'll be using with that application.

Using the Font/DA Mover to Add or Remove Fonts or Desk Accessories

■ Open Font/DA Mover.

Select the icon and choose Open from the File menu, or just double-click the icon.

Font/DA Mover is included on the System Disk; you can open it there or copy it to any other disk. See “Copying a Document, Folder, or Application to a Different Disk” in *Macintosh*, the owner's guide.



- Click either the **Font** or the **Desk Accessory** button, depending on which you want to add or remove.

The list on the left includes all fonts or desk accessories in the System file on the current startup disk. The list on the right includes fonts and desk accessories in the System file on any other inserted startup disk.

- Use the **Open** buttons to present lists of any other font and desk accessory files on any inserted disk.

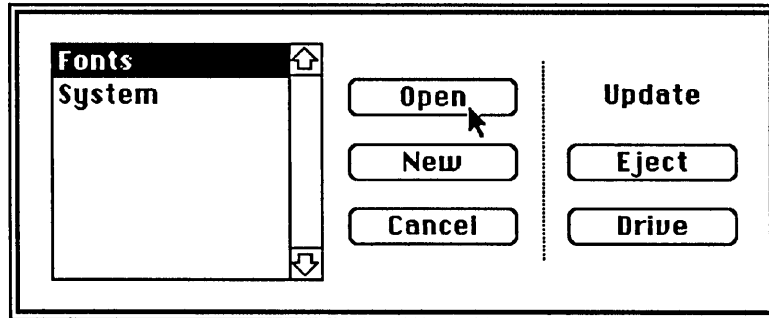
If necessary, first click **Close** to close the file currently displayed. Each **Open** button lets you control what's displayed in its list. Both the file you're looking at and the disk it's on are shown below each list.

Whenever you click an **Open** button, a dialog box with a list of files appears.

Use the **Eject** or **Drive** buttons to look at font and accessory files on other disks or other files on the same disk. The name of the disk you're looking at is always shown in the top right.

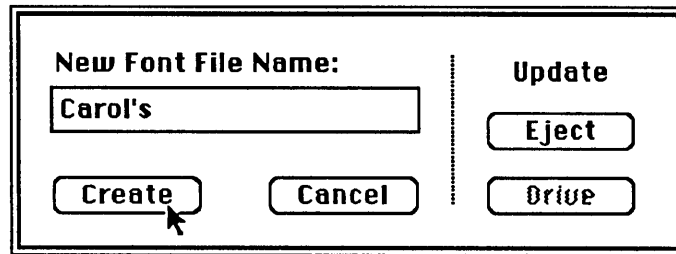
If you're using only the hard disk, with no disk inserted in the internal drive, clicking the **Open** button on the right side automatically presents a list of font and accessory files on the same disk. If you want to look at another disk, insert the disk you want to work with into the internal drive.

- Open the file you want to look at by selecting its name and then clicking Open, or by double-clicking its name.

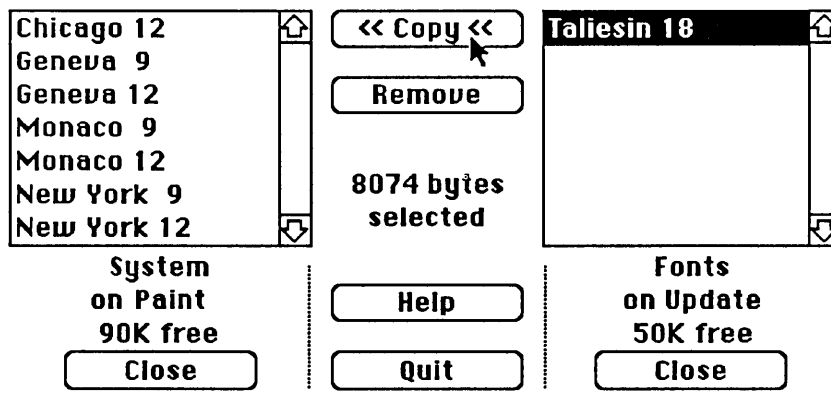


You can look at and work with any existing System, font, or desk accessory files. The Fonts file on the System Disk contains new fonts you may want to add to some of your disks.

- Or create a new file for your own collection of fonts or accessories by clicking New, naming the file, and clicking Create.



- Select the fonts or desk accessories you want to copy or remove.



Taliesin 18:

You can select from either list. Click to select a single font or accessory, hold down the Shift key while you click additional single fonts or accessories, or drag to select a group. Shift-click to deselect a selected file. The number of bytes selected is displayed as well as the amount of space available on the disk. Both the name of the current file and the name of the disk it's on are displayed below each list.

When a single font is selected, the name, size, and a sample of the font are shown at the bottom of the window; when more than one font is selected, or when an accessory is selected, nothing is displayed there.

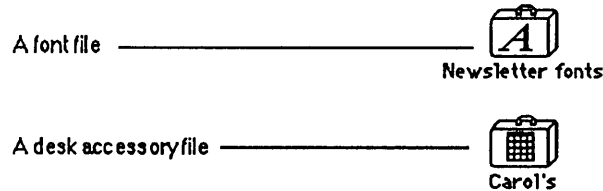
- Click Copy to copy the selected fonts or accessories in the direction the arrows point, or click Remove to remove the selected fonts or accessories.

This copies the fonts or desk accessories to the opposite file, or removes the fonts or accessories from the file you opened. If you remove all fonts or accessories from a file, the file itself will be gone the next time you click Open.

Only fonts and desk accessories in the current startup disk's System file are available to applications you use with that disk.

- Click Quit.

In the Finder, you can drag any font or accessory files you no longer need to the Trash, or copy or move these files between disks. See "Copying a Document, Folder, or Application to a Different Disk" or "Moving a Document, Folder, or Application to a Different Disk" in *Macintosh*, the owner's guide. Opening any font or accessory file automatically opens Font/DA Mover. If you have old font files (with a different icon), you can use the new Font/DA Mover to work with them; just open the Font/DA Mover rather than the font file itself.



You can have only as many fonts available at one time in an application as will fit in the application's Font menu. (This number varies, depending on the application.) You're limited to 15 desk accessories in a disk's System file.

You can use Font/DA Mover to create an auxiliary set of fonts or accessories. Later you can move the current System file fonts or accessories to another font or accessory file you create, and then copy your auxiliary file to your System file. You can alternate between the two fonts files (or any others you create) whenever you want.

Part 4

About Parallel Printer Install

The Parallel Printer Install application lets you install a parallel printer driver in your System Folder to use with MacWorks. While the parallel printer is installed, you won't be able to use the Serial B connector, so you won't be able to use your Imagewriter during this time. You can use the Install application later if you want to remove the parallel printer driver from the System Folder and regain the use of the Serial B connector.

Here's how to use the Parallel Printer Install program:

- **If necessary, first start up with the MacWorks disk, and then remove the ejected MacWorks disk.**
- **Insert the MacWorks System Disk.**

A few seconds later, the MacWorks System Disk icon appears on the desktop.

- **Open the MacWorks System Disk window by clicking the icon to select it and then choosing Open from the File menu, or by double-clicking the icon.**
- **Open the Parallel Printer Install application by selecting it and choosing Open from the File menu, or by double-clicking the icon.**
- **Click Install/Update Parallel Printer.**
- **Click OK.**

The parallel printer driver is now installed. (Any existing parallel printer driver is replaced with the new version.)

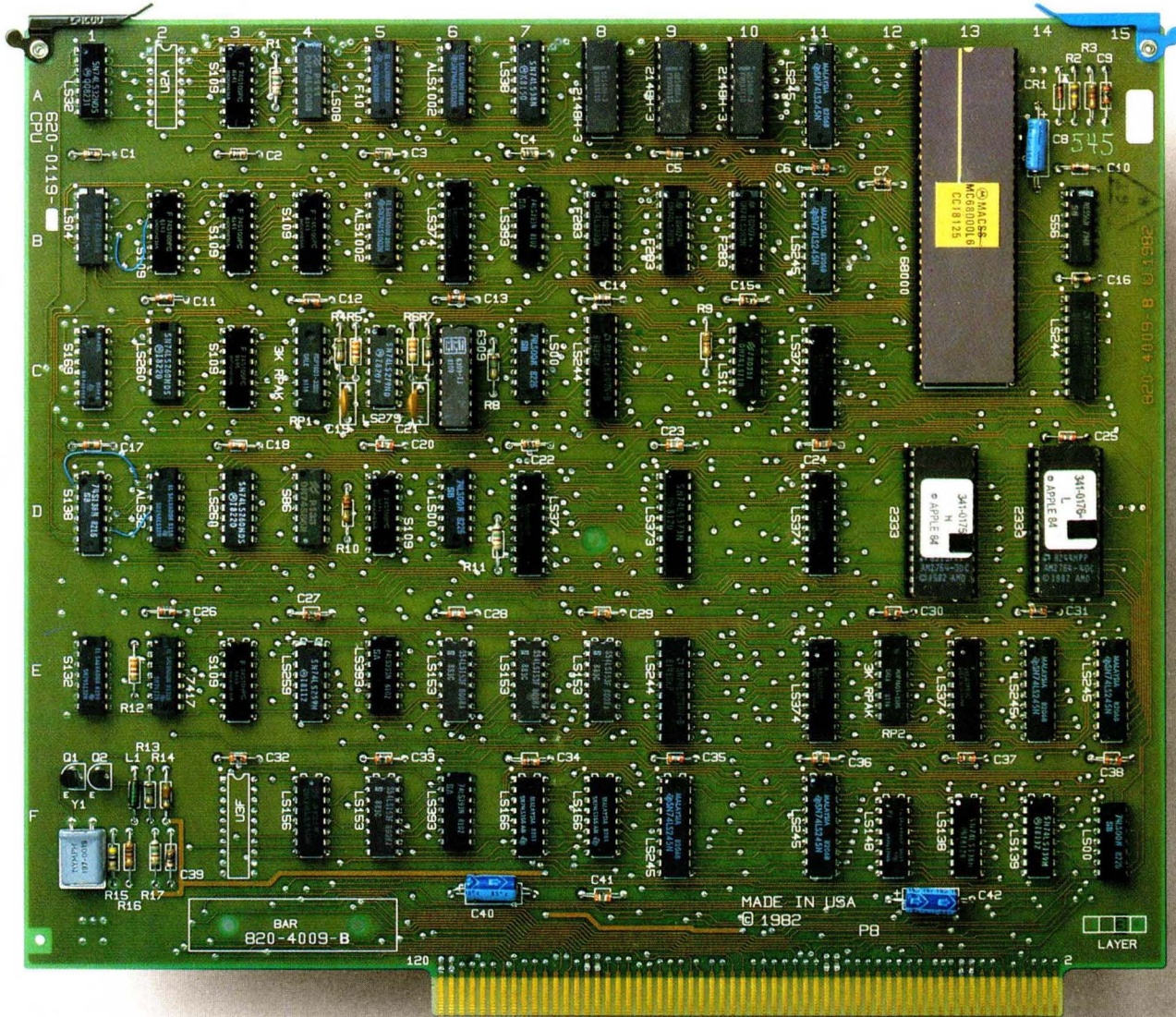
To use a serial printer again, use this application to remove the parallel printer driver.



Apple Computer, Inc.
20525 Mariani Avenue
Cupertino, California 95014
(408)996-1010
TLX 171-576



Macintosh™ XL Screen Kit



*Warning:
Dealer Installation Required.*

Logic board not included.

Macintosh XL
Screen Kit



A6G0001