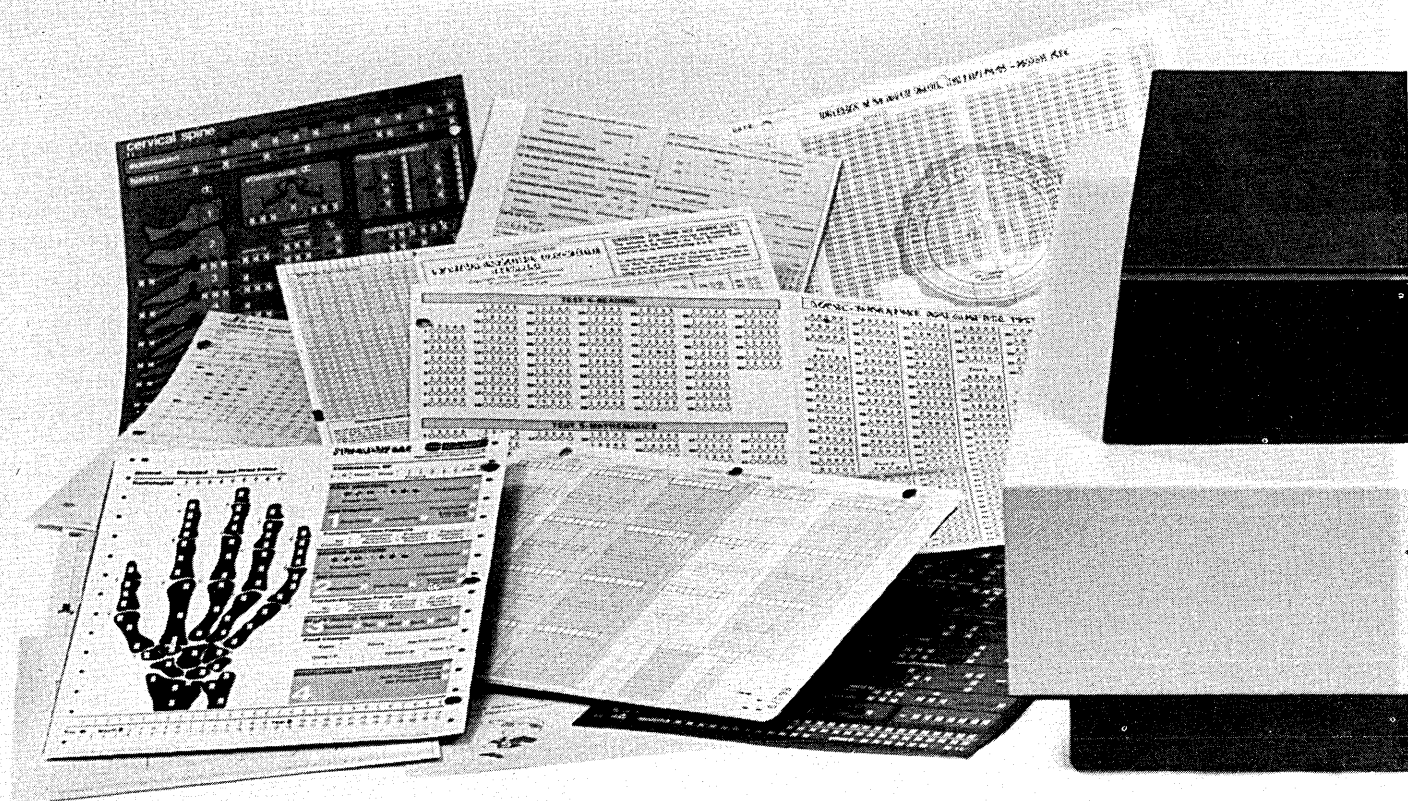


One good decision...



Capturing input data more accurately and reliably—as well as more economically—is getting easier all the time.

And the DECISION OMR6500 optical mark reader you see here is one of the big reasons why. The long-standing promise of optics is now being delivered—even to small system users.

It's delivering in schools. To help teachers grade papers and collect important information on student performance.

It's delivering in hospitals and clinics. To collect medical histories and to help doctors do a better job with test results, research findings and diagnoses.

And it's delivering in business. To

capture data directly from original source documents, eliminating the errors inherent in intermediate data-transfer and keypunching operations.

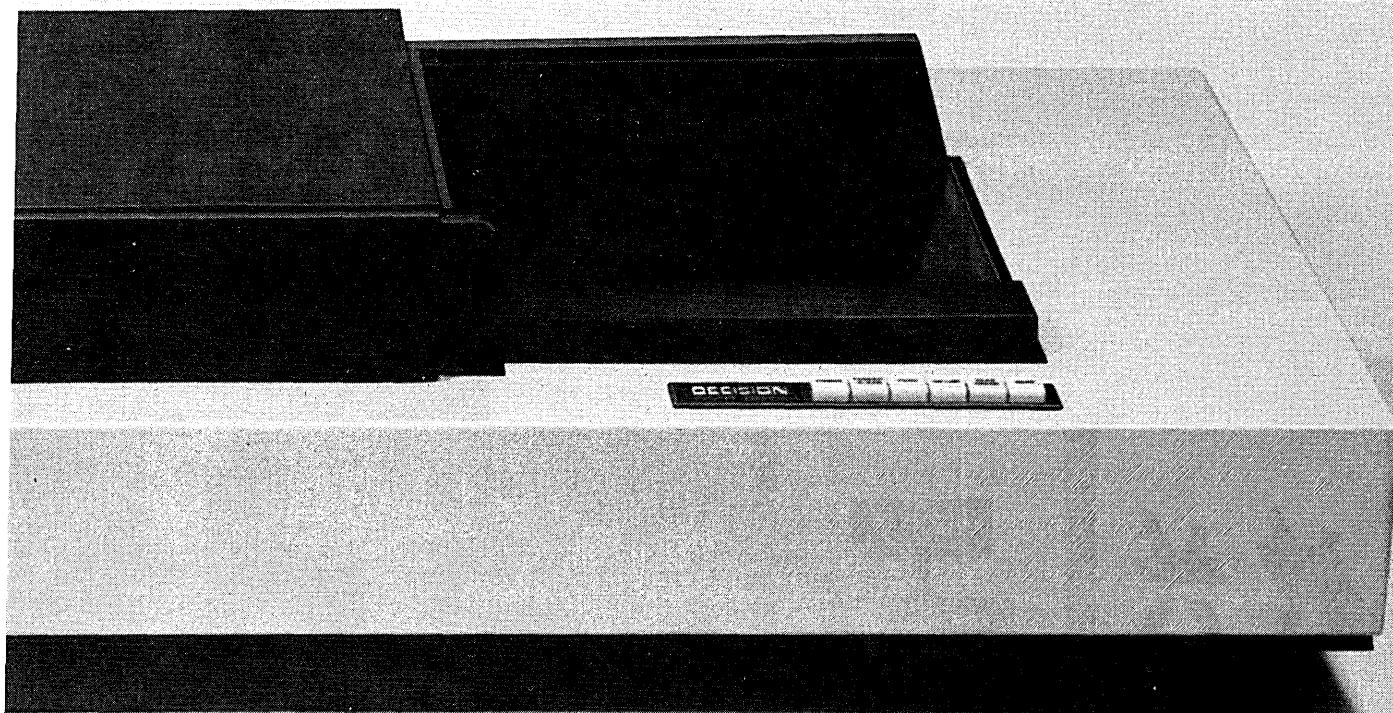
What it sees is what it gets.

The DECISION OMR6500 reads anything from pencil marks and pre-printed data to machine print and hand-printed data. It reads up to 6000 marks per form; up to 450 forms per hour. And it instantly translates it all into computer compatible signals.

Simplicity for reliability's sake.

Designed and built around the most advanced—yet field proven—technology available in scanning,

calls for another.



digitizing, recognizing and paper handling systems, the OMR6500 is simple, direct and reliable. It operates under complete program control, and employs a unique scanning mechanism that moves the optics instead of the document. Programmable error detection, not incidentally, is performed before the paper is advanced.

We build solutions.

We do a lot more than build mark readers, however. We build systems that may include a wide range of optical data entry systems, central processors, controllers, peripherals, power supplies, software, documentation and even training programs to make sure

you get what you need. In. Up. And operating. In other words, we solve problems.

Last and most.

Our coup de grace is the OCR7600 —probably the most advanced, most reliable and yet most economical optical character recognition system there is. Period. Which brings us back to more accurate, more reliable and more economical data input. With DECISION, it's getting easier all the time.

Decision, Inc.
5601 College Avenue
Oakland, California 94618
(415) 654-8626

DECISION
A SUBSIDIARY OF BALL CORPORATION