

| | | | | | |
|-----------------|----------------|--------------------|-------------------------------------|----------------------|----------------------|
| bcc | title | Model 30 Trivia | prefix/class-number.revision | | M30T/M-18.1 |
| | checked | <i>[Signature]</i> | authors | approval date | revision date |
| | checked | | Henry Thompson | | 8/20/70 |
| approved | <i>Mel</i> | <i>[Signature]</i> | classification | distribution | |
| | | | Manual | Company Private | pages |
| | | | | | 13 |

ABSTRACT and CONTENTS

This manual describes all trivia connected with the Model 30.

TABLE OF CONTENTS

| | Page |
|--|------|
| Print Procedure | 1 |
| Mounting a Tape | 3 |
| Dismounting a Tape | 4 |
| Card Reader Problems | 6 |
| Hardware Problems | 8 |
| Billing | 10 |
| Assembly Procedure for M30 Resident Communications Program | 11 |
| How to Make an IPL Dump Tape | 12 |

Print Procedure.

1. Hit POWER ON.
2. Hit RESET on TD Ø81.
3. Mount and ready tape on TD Ø8Ø.
4. Place Tape to Printer Utility deck (360P-UT-Ø52) face down, 9 edge inwards in card reader.
5. Hit START and END-OF-FILE of card reader.
6. Hit CARRIAGE RESTORE and START on printer.
7. Set LOAD UNIT switches on CPU to Ø14, and press LOAD. Cards should start reading, and soon printing should commence.
8. When printing is finished, remove printed paper from back of printer, return cards to cabinet, hit RESET and LOAD-REWIND on TD Ø8Ø.
9. Hit UNLOAD on Ø8Ø when tape has stopped moving.
10. Dismount tape and hit RESET on Ø8Ø.
11. Hit POWER OFF.

If program ever stops in the middle of printing, correct any obvious problems (such as printer out of paper, not READY, etc.) Then follow this procedure.

1. Set DATA switches on CPU to F5.
2. Set MAIN STORAGE ADDRESS swtiches to 0005.
3. Hit INTERRUPT.
4. Hit STOP.
5. Hit STORE.
6. Hit START.
7. Hit INTERRUPT.

If still no go, check printer and TD 080 READY, then try again from step 4. If this fails several times, set data switches to F4 and repeat from step 4 several times. If still no go, give up and go home.

Miscellaneous Techniques

A. Mounting and dismounting tapes

I. Mounting Procedure: The critical factor in mounting tapes is that the tape reel be facing in the right direction. The reel to be mounted goes on the left-hand side of the drive, front side out, so that if you pull on the free end of the tape, the reel moves clockwise. (see Fig. 1 page 5)

1. Place the reel on the empty hub as described above, first making sure that the latch in the end of the hub is open.
2. Close the latch, securing the reel in place.
3. Holding down the reel release button, unwind several feet of tape and feed it through the capstans as shown in the drawing. It should run straight across from one large roller to the other.
4. Slide the tape around the left-hand edge of the take-up reel and let the end fall onto the reel. The end of the tape should not at this point hang down beyond the hub of the take-up reel. (If necessary, pull some of the tape back through the capstans by holding down the reel release button and winding the feeder reel by hand.)
5. Holding down the reel release button with one hand and holding the tape in the take-up reel with

one finger, slowly turn the take-up reel about 3/4 of a turn, until the end of the tape is caught under the incoming tape from the capstans.

6. Remove the finger which is holding the tape, and wind the tape forward onto the take-up reel until the reflective foil marker (this signals the beginning of the tape) appears on the top side of the tape as it runs through the capstans.
7. Wind the tape a few more turns, moving the reflective marker onto the take-up reel. The tape is now mounted.
8. To ready tape hit LOAD REWIND and START. READY light should light, if not dismount and try again from beginning.

II. Dismounting Procedure: First unload the tape by hitting RESET, LOAD-REWIND and, after the tape stops, UNLOAD. To dismount the tape after it has been rewound and unloaded, simply hold down the reel release button and wind the tape back onto the feeder reel by hand. Release the hub latch and remove the tape.

Important Rules

- I. Always hold down reel release button while turning either tape reel.
- II. Always hit RESET on the drive to close the window before turning power off.

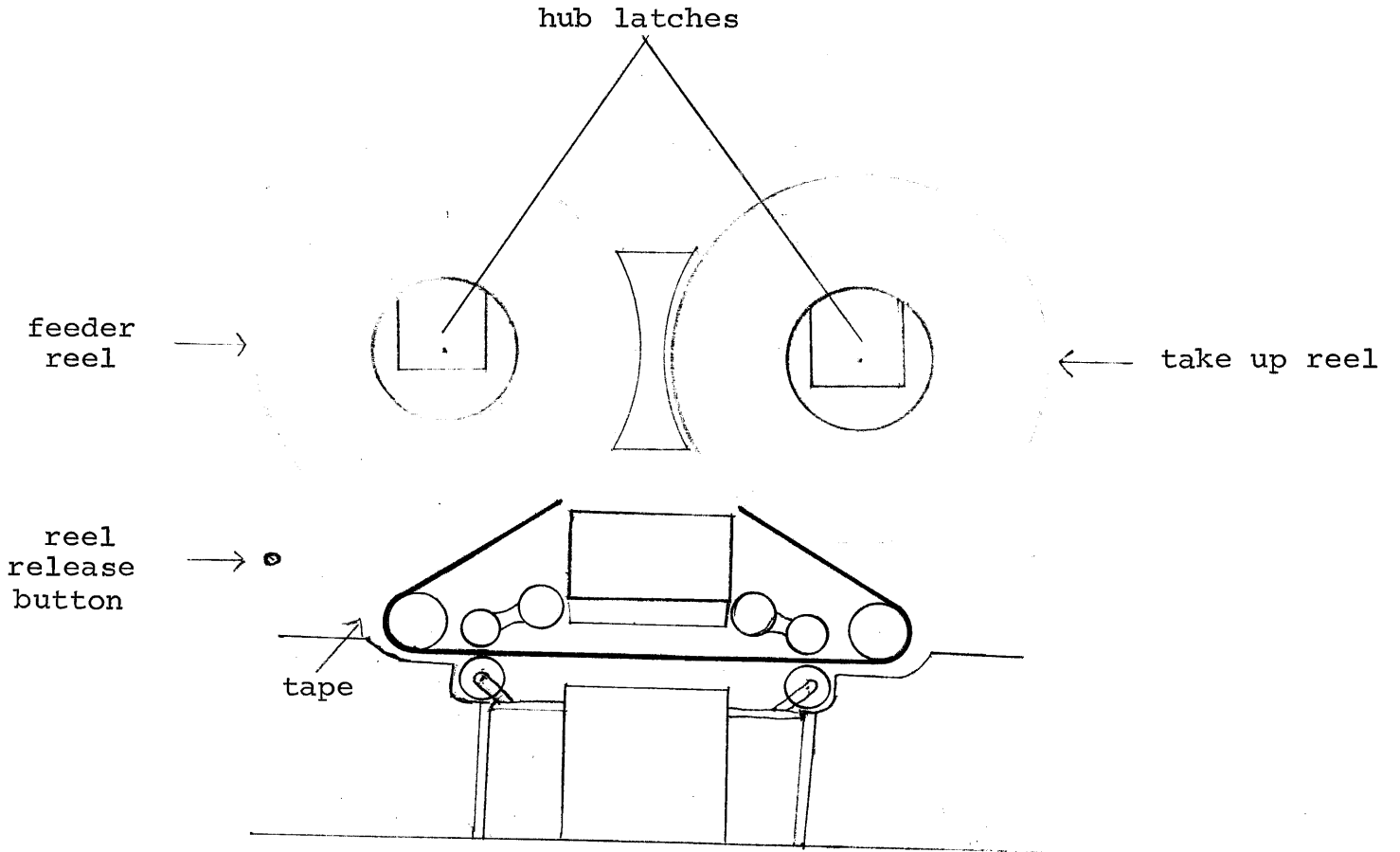


Figure 1. Tape drive

B. Card Reader Problems: When cards stop reading and the READY light goes out and the FEED CHECK light goes on, a card jam has occurred. There are actually two kinds of jams; feed failure and internal jams. In either case the following procedure should be followed:

NOTE: After hitting START on the card reader, always hit EOF.

1. Remove already read cards from stacker.
2. Remove unread cards from hopper.
3. Hit and hold down NPRO for several cycles of the reader.
4. If a card comes into the stacker and FEED CHECK turns out, go to step 6.
5. You have a bad jam. Follow procedure described under hardware troubles.
6. You have a feed failure. Replace the top card of the unread cards by duplicating it on the key punch. Place the card which came out when you pressed NPRO on the front of the unread cards, place cards in reader, and hit START.

Read checks occur when a mispunched card is read. READ CHECK lights up and READY turns out. The card in error is the last card in the stacker.

1. Remove the card in error from the stacker.
2. Remove the deck from the stacker.
3. Remove the deck from the hopper.
4. Hit and hold down NPRO for several cycles.
5. Place the ejected card on the front of the unread deck.
6. Correct the card in error and place it in front of the ejected card.
7. Place this deck in the reader and hit START.

Maintenance and Billing

A. IBM Customer Engineers, P.M. and hardware troubles

Once a week a C.E. will show up to do P.M. (Preventive Maintenance) on the machine. This procedure, which takes 2 - 3 hours, should insure that no hardware problems occur. If a hardware problem does develop the following procedure should be followed:

1. Try to get in touch with Henry Thompson.
2. Fill out a console description sheet, several of which are stuck in the maintenance log on top of the CPU. Try to include some idea of what you think the machine was supposed to be doing when it failed.
3. If a. You could not reach Henry Thompson and b. You are convinced it is a hardware problem and c. You need it fixed as soon as possible then call and report the trouble to IBM. They will send a C.E. out to fix it. The phone number is 834-3024. The dispatcher will answer; describe the problem and ask for help. Our usual C.E. is Mr. Swindell, ask for him, but anyone will do. In case of difficulty ("well we'll try to get to it early next week," etc.) call 834-7070 and ask for

bcc

p/c-n.r

M30T/M-18 .1

page

9

Dan Janda (our Systems Engineer) or Bill Moore (our
Salesman) and raise hell until something happens.

B. Billing.

At the end of each month a billing sheet called a Billing Time Authorization or BTA arrives at the accounting office. It should be filled out as indicated with the meter readings on the individual hardware pieces. All but the first carbon of the month's sheets in the maintenance log should be torn out and attached to the BTA. The BTA should be signed by Henry Thompson, and the first two copies, along with two copies of the log should be sent to IBM at the address on the BTA. The other copy of the BTA and the log should be sent to Jim Wolf, Controller.

NOTE: The figures on this sheet are of great importance if the average usage of any of the equipment is greater than 2 shifts per day, so they should be recorded carefully.

Assembly Procedure for M3Ø Resident
Communications Program

1. Mount and ready scratch tapes on units Ø8Ø and Ø81
2. Place following decks in reader:
 - a. Assembler Phase I
 - b. M3Ø source deck
3. Hit START and EOF on reader.
4. Ready Printer.
5. Set LOAD UNIT switches to Ø14 and hit LOAD.
6. When reader is finished*, put the following in it:
 - a. Assembler Phase II deck
 - b. Clear core card
 - c. Absolute Loader deck
7. Hit START and EOF on reader.
8. Eject page on printer, and ready printer.
9. Hit LOAD.
10. Reader may pause in the middle of the deck, that's all right, its waiting for tape to rewind.
11. When printing is finished** rewind and ready unit Ø81.
12. Hit LOAD.
13. Pause briefly and hit LOAD.
14. M3Ø is now running and should be in its normal happy state: WAIT light on, MSD, A, B registers Ø, ALU OUTPUT 99. To save core see next section.

* Printer says 1EI

** Printer says 2EI

To Make an IPL Dump Tape

1. Get the ITP core in the state you want dumped. Be sure that location 4 contains the first instruction you want executed after a load from this tape, since the IPL bootstrap paper tape transfers control to 4.
2. Rewind tape unit 081 (the right unit). To do this, hit
RESET

LOAD REWIND

START

on the tape unit. Then hit LOAD on the 360, after checking that the LOAD UNIT switches are set to 081. This gets a clean copy of IPL into the 360.
3. Mount the new tape on unit 081. Rewind it. Be sure the write ring is in.
4. Set the LOAD UNIT switches on the 360 to 014
5. Put the deck containing the program to create an IPL tape in the reader. This deck consists of

3 cards labeled HEX LOADER

19 cards labeled CREATE IPL TAPE

Hit END OF FILE and START on the reader. If the reader jams, see page 6.
6. Hit LOAD on the 360. You have now written the 360 part of IPL on the tape.
7. Rewind unit 081. Put 081 back into the LOAD UNIT switches on the 360 and hit LOAD.
8. Check that unit 080 (the left tape unit) is ready.

9. Say to IPL

#IINIT_

#D^CUMP_

10. Rewind unit Ø81 and hit load on 360. You are now done.