

APRIL, 1955

Series A

STANDS • CHAIRS

ACCESSORIES

MACHINE SHIPPING
MATERIALS

Service

PARTS CATALOGUE

SUBJECT TO CHANGE WITHOUT NOTICE



Property of and to be returned to

BURROUGHS CORPORATION

Detroit 32, Michigan

#11
APRIL, 1955

Series A

ACCESSORIES
STANDS • CHAIRS
MACHINE SHIPPING
MATERIALS
MISCELLANEOUS

PRICE LIST

SYMBOL BOOK *and* PRICE LIST

SUBJECT TO CHANGE WITHOUT NOTICE

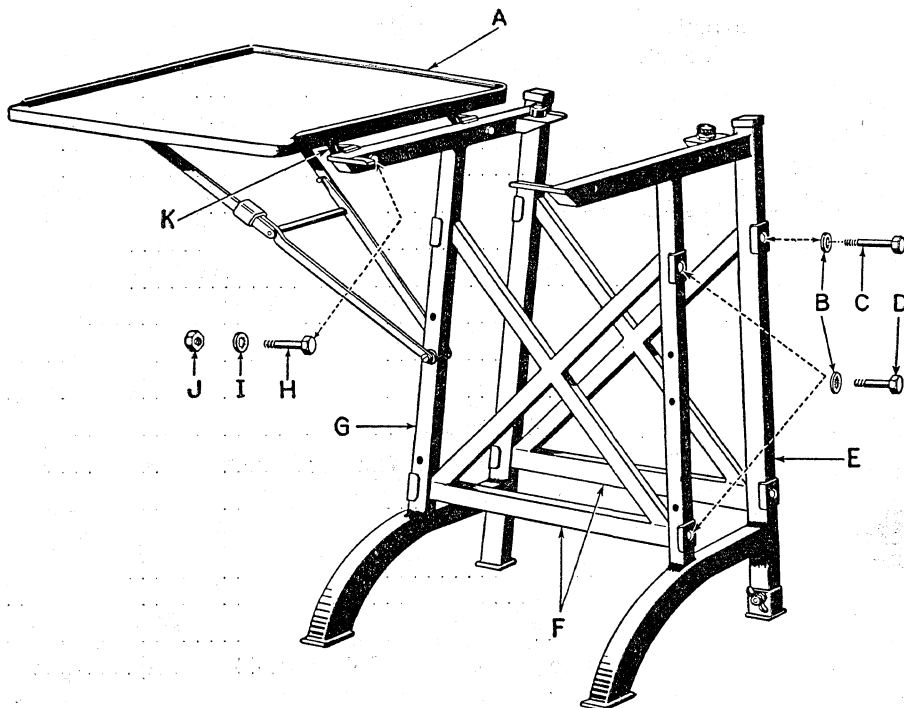


Property of and to be returned to
BURROUGHS CORPORATION
Detroit 32, Michigan

INDEX

Description	Plate No.
Accessories for Packing Machines	
Series H.....	30
Series J.....	31
Series M.....	33
Series P.....	32
Boxes and Cartons for Shipping Machines	34
Chair, Style 1	26
Chair, Style 2	27
Check Table Chart	24
Check Table Bracket Chart	25
Form Holders and Tables	28
Machine Rests (for Style 41, 42, 43 and 44 Stands)	6
Metal Enclosure for Style 43H Stands (for Series H Carriage)	23
Meter Reading Book Holders Nos. 1, 2 and 3	29
Posting Desks for Series F	
No. 1, Style A301.....	20
No. 2, Style A301.....	21
Posting Desk for Series M	22
Raising and Lowering Device (for Style 31 thru 36 and 41 thru 44 Stands)	8
Stands for Series C	
Style 45 and 46.....	10
Style 65, 65A, 66 and 66A.....	11
Stands for Series F	
Style 91A.....	14
Style 91AE.....	15
Style 91AF.....	16
Style 92A.....	17
Stands for Series H	
Style 33 and 35.....	2
Style 34 and 36.....	3
Style 41, 42, 43 and 44.....	5
Stands for Series M	
Style 31 and 32.....	1
Style 41, 42, 43 and 44.....	5
Style 43M, 43MF, 43MN, 43MNF, 44M, 44MF, 44MN and 44MNF.....	4
Stands for Series P	
Style 45 and 46.....	10
Style 65, 65A, 66 and 66A.....	11
Style 93 (Series P 600).....	18
Stands for Series T	
Style 50.....	9
Style 67.....	12
Stands for Series V	
Style 31 and 32.....	1
Style 41, 42, 43 and 44.....	4
Style 90.....	13
Stand for Miscellaneous Use	
Style 99.....	19

STYLE 31 AND 32 STANDS (Plate 1)



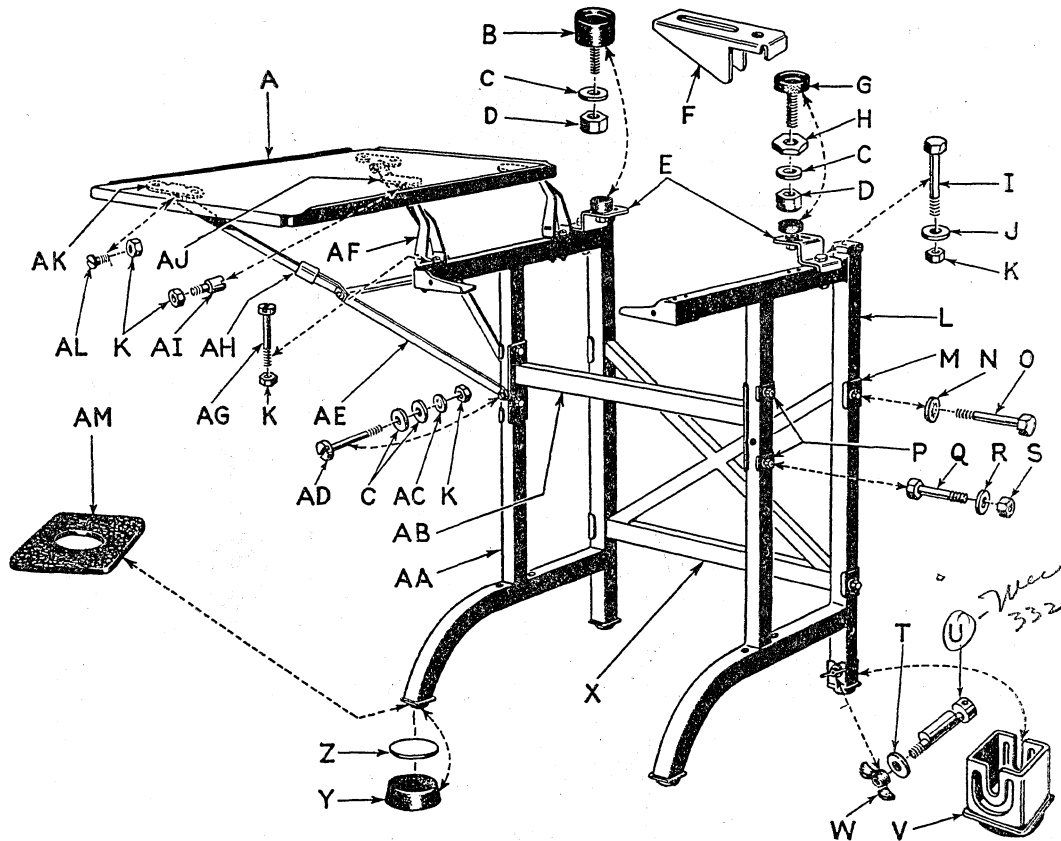
PART NUMBERS (Plate 1)

No. 31 Low Stand for Class 4 and 41
No. 32 High Stand and for Type 70 machines

Parts not lettered are the same as those illustrated on Plate 2.

- A 1A-20995L No. 1 left check table for Style 31 low stand
- 11A-20995L No. 1 left check table for Style 32 high stand
- B 1097 $\frac{3}{4}$ lockwasher, 8 req.
- C 20950A hex. head cap screw, 4 req.
- D 20950 $\frac{1}{4}$ hex. head cap screw, 4 req.
- E 1A-20992AR (Low) No. 1 side frame, right, for Style 31 low stand
- 1A-20992AR (High) No. 1 side frame, right, for Style 32 high stand
- F 1-20998A No. 1 cross brace, 2 req.
- G 1A-20992AL (Low) No. 1 side frame, left, for Style 31 low stand
- 1A-20992AL (High) No. 1 side frame, left, for Style 32 high stand
- H 1-20951A hex. head screw, includes I, J
- I 1097 $\frac{3}{4}$ lockwasher, included in H
- J 199 Style 9 hex. nut, included in H
- K 1-20926 (Low) No. 1 bracket, for Style 31 low stand
- 1-20926 (High) No. 1 bracket, for Style 32 high stand

STYLE 33 AND 35 STANDS (Plate 2)



PART NUMBERS (Plate 2)

No. 33 Low Stand for Class I, 2, 6, 11 thru 16, 20 thru 30, Style 9, 11, 13

No. 35 Low Stand for Class 1, 2, 6, 11 thru 16, 20 thru 30, Style 15, 17 and for machines with "Form Ejector Carriage"

- A 1-20995L No. 2 check table, left
- B 1-20946L retaining cup, includes C and D
- C 925 $\frac{1}{2}$ washer, included in B
- D 20945 $\frac{1}{2}$ hex. nut, included in B
- E 20927 $\frac{1}{4}$ A rear machine rest, 2 req.
- F 20927 $\frac{1}{4}$ A No. 2 rear bracket, 2 req.
- G 1-20946R retaining cup, includes H, C, D
- H 20945 $\frac{1}{2}$ hex. nut, included in G
- I 20962 $\frac{1}{2}$ hex. head screw, 2 req.
- J 203138 $\frac{1}{2}$ washer, 3 req.
- K 393 hex. nut, 5 req.
- L 1C-20992AR (Low) No. 2 side frame, right
- M 20910 reinforcement plate, 4 req.
- N 1097 $\frac{3}{4}$ lockwasher, 4 req.
- O 20950A hex. head cap screw, 4 req.
- P 20910 No. 2 reinforcement plate, 4 req.
- Q 20955 No. 2 hex. head screw, 4 req.
- R 918 $\frac{3}{4}$ washer, 4 req.
- S 199 Style 9 hex. nut, 4 req.
- T 20929 washer
- U 20960A eccentric screw
- V 1-20921 No. 2 leveling device
- W 20947 $\frac{1}{2}$ wing nut
- X 1-20998 Style 13 (Low) No. 2 cross brace, for Style 33 stand
- Y 1-20998 Style 17 (Low) No. 2 cross brace, for Style 35 stand
- Z 20922 $\frac{3}{4}$ steel insert, 3 req.
- AA 1C-20992AL (Low) No. 2 side frame, left
- AB 1-20998 Style 13 No. 4 bar brace, for Style 33 stand
- 1-20998 Style 17 No. 4 bar brace, for Style 35 stand

AC 1097 $\frac{3}{4}$ lockwasher

AD 20954 screw

AE 1-20916 $\frac{1}{2}$ L No. 2 check table support

AF 1-20926 No. 2 check table bracket, 2 req. includes K, AI

AG 352 $\frac{7}{8}$ screw, 4 req.

AH 20926 $\frac{3}{4}$ L locking device

AI 20952 screw, included in AF

*AJ 20911ZR bracket/ use 9355 screw 47 nut, 2 ea. req.

20911ZL bracket/

*AK 20911 No. 3 bracket, use 9355 screw 47 nut, 2 ea. req.

AL 20954 $\frac{1}{2}$ B shoulder screw, 2 req.

AM 20999 $\frac{1}{2}$ composition pad placed under feet of stand to prevent stand from moving

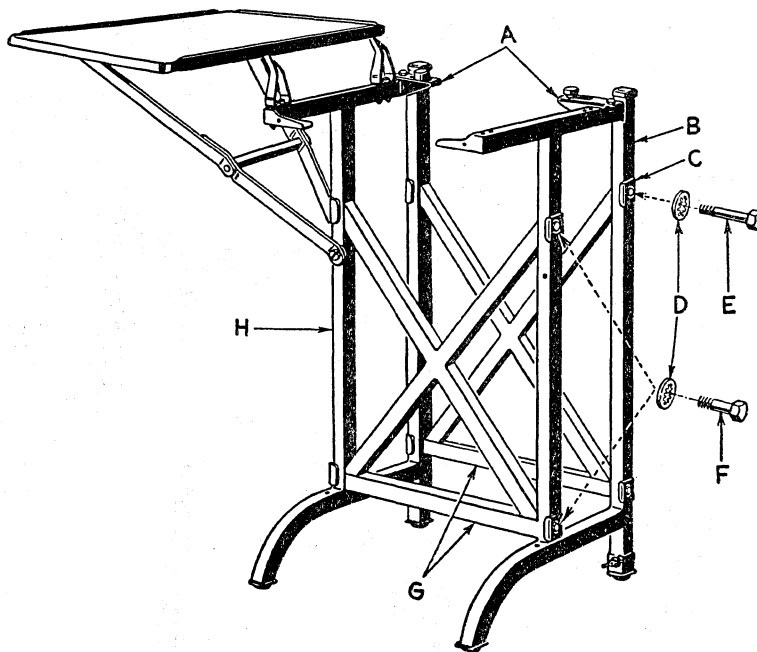
NOTE: To elevate the rear of machines on Style 33 and 35 stands manufactured prior to June 1, 1942 (on which the rear extension supports for cups B and G are welded to stand) it is necessary to install machine rest 20927 $\frac{1}{4}$, secured by bolt 20953, washer 925 $\frac{1}{2}$, and nut 199 Style 9 on each rear support for cups B and G. To provide clearance for the motor, 1 $\frac{1}{2}$ " of stock must be removed from right rear extension support.

To elevate the rear of machines on Style 33 and 35 stands manufactured after June 1, 1942 (on which the rear extension supports for cups B and G are bolted to the stand) remove rest F and install rest E as illustrated.

Machines equipped with "form ejector carriage" should not be elevated.

* To install repair bracket AJ and AK use the replacement bracket as a drill template for drilling two $\frac{3}{8}$ " holes through the check table, by locating bracket on spot welding marks remaining on the table. Holes should be countersunk to the full depth of the metal to permit screws to be almost flush with the table top.

STYLE 34 AND 36 STANDS (Plate 3)



PART NUMBERS (Plate 3)

No. 34 High Stand for Class 1, 2, 6, 11 thru 16, 20 thru 30, Styles 9, 11, 13

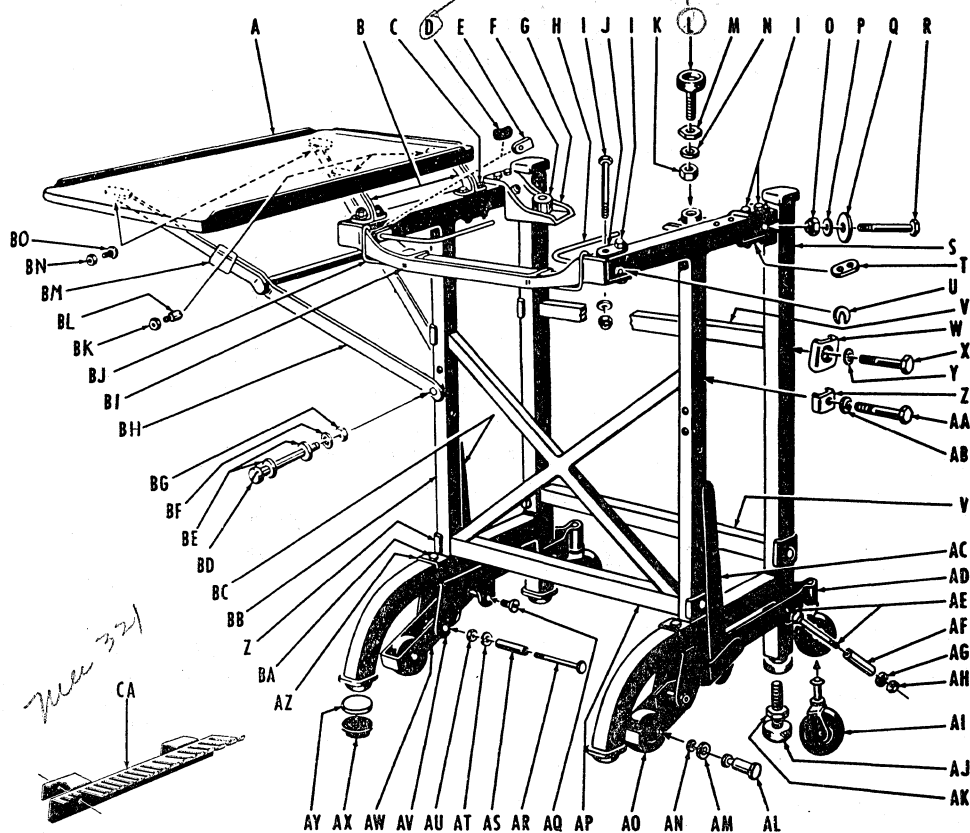
No. 36 High Stand for Class 1, 2, 6, 11 thru 16, 20 thru 30, Styles 15, 17

Parts not lettered are the same as those illustrated on Plate 2.

- A 20927 1/4 A No. 2 bracket, 2 req.
- B 1B-20992R (High) No. 2 side frame, right
- C 20910 reinforcement plate, 8 req.
- D 1097 3/8 lockwasher, 8 req.
- E 20950A hex. head cap screw, 4 req.
- F 20950 1/4 hex. head cap screw, 4 req.
- G 1-20998 Style 13 (High) No. 2 cross-brace, for Style 34 stand
- 1-20998 Style 17 (High) No. 2 cross-brace, for Style 36 stand
- H 1B-20992L (High) No. 2 side frame, left

note 4/64

STYLE 43M, 43MF, 43MN, 43MNF, 44M, 44MF, 44MN, 44MNF STANDS—REINFORCED (Plate 4)



PART NUMBERS (Plate 4)

43 Low Stand for Class 7 and
44 High Stand Series M machines

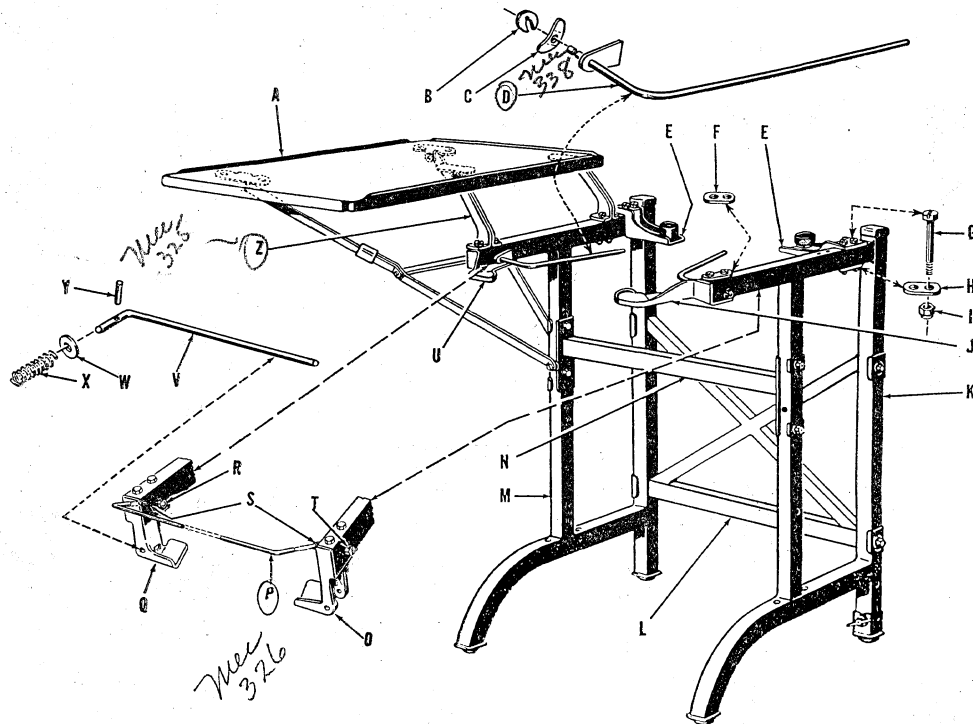
Style 43M Stand Illustrated

- A 1-20995L No. 2 check table, left
- B 1-20995R No. 2 check table, right
- C 1-20926 No. 9 bracket, 2 req. for each check table A
- D 20952 3/8 B hex. head cap screw, 2 req. for each bracket B
- E 20929 1/4 tension blank, included in H, 2 req.
- F 20927 3/4 limit, included in H, 2 req.
- G 20946L cup only
- H 1-20946L complete assembly, includes 925 1/2 washer and 20945 1/2 hex. nut
- I 20967 1/2 No. 2 machine rest, rear, 2 req.
- J 1-20971 No. 1 machine support rod assembly, includes D, E
- K 20952 3/8 B hex. head screw, 10 req.
- L 20926 3/8 reinforcement plate, 2 req.
- M 20945 1/2 hex. nut
- N 20946R cup only
- O 1-20946R complete assembly, includes K, M, N
- P 20945 3/4 hex. nut, included in L
- Q 925 1/2 washer, included in L
- R 20945 1/2 A hex. nut, 2 req.
- S 20929 1/8 washer, 2 req.
- T 20929 1/8 washer, 2 req.
- U 20952 1/4 hex. head cap screw, 2 req.
- V 1C-20992R (High) No. 2 side frame, right, for Style 43 stands
- W 1D-20992AR (Low) No. 2 side frame, right, for Style 44 stands

- 2C-20992R complete assembled right side frames for Style 43M and 44M stands; includes AC, AD, AE, AF, AG, AH, AI, AJ, AK, AL, AM, AN, AO
- 2D-20992AR (Low) No. 2
- T 20926 3/8 No. 2 reinforcement plate, 2 req.
- U 21 No. 3 clip, 2 req.
- V 1-20998 No. 8 brace, 2 req.
- W 20910 reinforcement plate, 4 req.
- X 20950A hex. head cap screw, 4 req.
- Y 1097 1/4 lockwasher, 4 req.
- Z 20926 3/8 No. 2 reinforcement plate, 4 req.
- AA 20955 No. 2 hex. head cap screw, 4 req.
- AB 1097 1/4 lockwasher, 4 req.
- AC 1-20918 1/2 R lever
- AD 1-20913 1/2 R and L pivot arm, rear
- AE 20962 1/2 hex. head screw, 2 req.
- AF 20945 1/2 space collar, 2 req.
- AG 1097 1/4 lockwasher, 2 req.
- AH 393 hex. nut, 2 req.
- AI 1-20997 1/2 A No. 2 complete caster, 2 req.
- AJ 1-20956 1/2 adjustable foot
- AK 12045 1/4 hex. nut
- AL 20963 1/2 axle for front caster, 2 req.
- AM 811 1/2 washer, 2 req.
- AN 69771 retaining ring, 2 req.
- AO 20997 1/4 A No. 2 caster wheel, 2 req.
- AP 1-20998 Style 17 (Low) No. 2 cross brace
- AQ 3457 screw, 2 req.
- AR 20962 1/2 hex. head screw, 2 req.
- AS 20945 1/2 space collar, 2 req.

- AT 1097 1/4 lockwasher, 2 req.
- AU 393 hex. nut, 2 req.
- AV 20917 3/4 bracket, 2 req.
- AW 1-20913 1/2 R and L pivot arm, front
- AX 20999 rubber foot, 3 req.
- AY 20922 3/4 steel insert, 3 req.
- AZ 20910 No. 2 reinforcement plate, 4 req.
- BA 20950 1/2 hex. head screw, use 1097 1/4 lockwasher—20747 hex. nut, 4 ea. req.
- BB 1C-20992L (High) No. 2 side frame, left, for No. 43 stands
- 1D-20992L (Low) No. 2 side frame, left, for No. 44 stands
- 2C-20992L (High) No. 2 complete assembled left side frame; includes AQ, AR, AS, 2D-20992L (Low) No. 2 AT, AU, AV, AW, AX, AY, AZ, BA
- BC 1-20918 1/2 L lever
- BD 20954 hex. head screw
- BE 925 1/2 washer, 2 req.
- BF 1097 1/4 lockwasher
- BG 393 hex. nut
- BH 1-20916 1/2 L No. 2 check table support
- BI 20967A No. 3 shown, front mach. rest for 43M and 44M stands
- 20967A No. 2 front mach. rest for 43MN and 44MN stands, see chart (Plate 6)
- BJ 20972A No. 2 apron support rod
- BK 393 hex. nut, 2 req.
- BL 20952 screw, 2 req.
- BM 20926 3/4 L locking sleeve
- BN 393 hex. nut, 2 req.
- BO 20954 1/2 B shoulder screw, 2 req.
- CA 1-28237A control bar and form head—ing holder

STYLE 41, 42, 43, 44 STANDS (Plate 5)
FOR CLASS 2, 20 THRU 30 (SERIES H), CLASS 4, 4D AND 41 (SERIES V),
AND TYPE 70 (SERIES M) MACHINES



PART NUMBERS (Plate 5)

Style 41H9 low stand for Style 9 Series "H" machines, check table left side
Style 41H9F low stand for Style 9 Series "H" machines, check table right and left side
Style 41V low stand for Series "V" machines, check table left side
Style 41VF low stand for Series "V" machines, check table right and left side
Style 42H9 high stand for Style 9 Series "H" machines, check table left side
Style 42H9F high stand for Style 9 Series "H" machines, check table right and left side
Style 42H13 high stand for Style 13 Series "H" machines, check table left side
Style 42H13F high stand for Style 13 Series "H" machines, check table right and left side
Style 42V high stand for Series "V" machines, check table left side. Replaced by Style 90 stand
Style 42VF high stand for Series "V" machines, check table right and left side. Replaced by Style 90 stand
Style 43H low stand for Style 13 machines on Style 17 base and Style 17 Series "H" machines, check table left side
Style 43HE low stand for Style 13 machines on Style 17 base and Style 17 Series "H" machines with form ejector carriage, check table left side
Style 43HF low stand for Style 13 machines on Style 17 base and Style 17 Series "H" machines, check table right and left side
Style 43HEF low stand for Style 13 machines on Style 17 base and Style 17 Series "H" machines with form ejector carriage, check table right and left side

Style 43M low stand for Class "7" and Series "M" machines, new wide base, check table left side
Style 43MN low stand for Class "7" and Series "M" machines, narrow or wide base, check table left side
Style 43MF low stand for Class "7" and Series "M" machines, new wide base, check table right and left side
Style 43MNF low stand for Class "7" and Series "M" machines, narrow or wide base, check table right and left side
Style 44H high stand for Style 13 machines on Style 17 base and Style 17 Series "H" machines, check table right side
Style 44HF high stand for Style 13 machines on Style 17 base and Style 17 Series "H" machines, check table right and left side
Style 44M high stand for Class "7" and Series "M" machines, new wide base, check table left side
Style 44MN high stand for Class "7" and Series "M" machines, narrow or wide base, check table left side
Style 44MF high stand for Class "7" and Series "M" machines, new wide base, check table right and left side
Style 44MNF high stand for Class "7" and Series "M" machines, narrow or wide base, check table right and left side

Parts not lettered are the same as those illustrated on Plate 4.

A 51-20995L No. 2 check table
 B 21 No. 3 clip, included in D
 C 20929 1/4 tension blank, included in D
 D 1-20971 No. 1 machine support rod, includes B, C

E 20967 1/2 No. 2 rear machine rest, 2 req. for Styles 41V, 42V, 43M, 44M, 43MN, 44MN
 F 20926 3/8 reinforcement plate
 G 20952 1/2 B hex. head cap screw, 10 req.
 H 20926 3/8 No. 2 reinforcement plate
 I 20945 1/2 A hex. nut, 10 req.
 J Use 20967A No. 2 front machine rest
 K 1D-20992AR (Low) No. 2 side frame, right, for Style 41 and 43 stands
 L 1C-20992R (High) No. 2 side frame, right, for Style 42 and 44 stands
 M 1-20998 Style 13 (Low) No. 2 cross brace for Style 41 and 42 stands, 2 req. for Style 42 stand
 N 1-20998 Style 17 (Low) No. 2 cross brace for Style 43 and 44 stands, 2 req. for Style 44 stand
 O 1D-20992AL (Low) No. 2 side frame, left, for Style 41 and 43 stands
 P 1C-20992L (High) No. 2 side frame, left, for Style 42 and 44 stands
 Q 1-20998 Style 13 No. 4 reinforcement bar for Style 41 stands
 R 1-20998 Style 17 No. 4 reinforcement bar for Style 43 stands
 S 20967L Style 17 No. 1 front machine rest
 T 20972A Style 13 apron support rod for Style 41 and 42 stands
 U 20972A Style 17 apron support rod for Style 43 and 44 stands
 V 20967L Style 17 No. 1 front machine rest
 W 10762 hex. nut, 2 req.
 X 20927 7/8 holder, 2 req.
 Y 12051 1/4 hex. head screw, 2 req.
 Z Use 20967A No. 2 front machine rest
 1-20971 No. 2 machine support rod, includes Y
 510 1/2 washer
 20980 compression spring
 8853 1/2 pin, included in V
 1-20926 No. 9 check table bracket, 2 req.

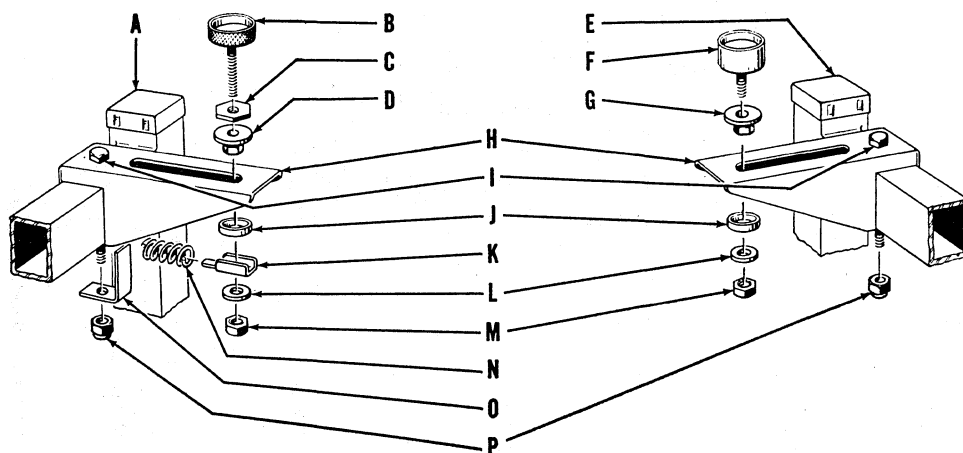


A	20967 ^{1/2} L Style 9 No. 1 rear machine rest for Style 41H9, 42H9 stands
B	20967 ^{1/2} R Style 9 No. 1 rear machine rest for Style 41H9, 42H9 stands
C	20967 ^{1/2} L Style 9 No. 1 front machine rest for Style 41H9 and 42H9 stands
D	20967 R Style 9 No. 1 front machine rest for Style 41H9 and 42H9 stands
E	20927 ^{1/2} L Style 17 No. 1 rear machine rest for Style 41H13, 42H13, 43H, 44H stands
F	20927 ^{1/2} R Style 17 No. 1 rear machine rest for Style 41H13, 42H13, 43H, 44H stands

G	20967L Style 17 No. 1 front machine rest for Style 41H13, 42H13, 43H, 43HE, 44H stands
H	20967R Style 17 No. 1 front machine rest for Style 41H13, 42H13, 43H, 43HE, 44H stands
I	20927½L Style 17 No. 2 rear machine rest for Style 43HE stands
J	20927½R Style 17 No. 2 rear machine rest for Style 43HE stands
K	20967L No. 3 front machine rest for Style 42H9, 42H13, 43HE stands
L	20967R No. 3 front machine rest for Style 42H9, 42H13, 43HE stands
M	20927½A No. 2 rear machine rest for Style 42H9, 42H13, 44H stands, 2 req.

N	20967L	No. 4	front machine rest for
	Style	42H9, 42H13, 44H stands	
O	20967R	No. 4	front machine rest for
	Style	42H9, 42H13, 44H stands	
P	20967½	No. 2	rear machine rest for
	Style	41V and 42V stands, 2 req.	
Q	20967L	No. 2	front machine rest for
	Style	41V and 42V stands	
R	20967R	No. 2	front machine rest for
	Style	41V and 42V stands	
S	20967½	No. 2	rear machine rest for
	Style	43MN and 44MN stands, 2 req.	
T	20967A	No. 3	front machine rest for
	Style	43MN and 44MN stands	
U	20967A	No. 2	front machine rest for
	Style	43MN and 44MN stands	

STABILIZER FOR SQUARE TUBE STANDS—SERIES H MACHINES (Plate 7)



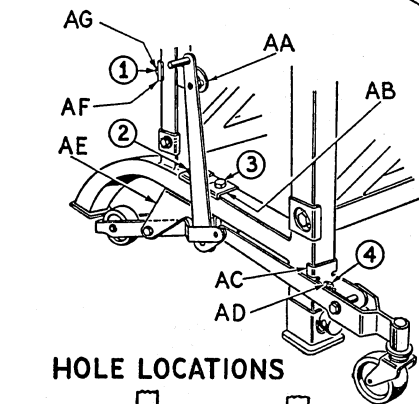
PART NUMBERS (Plate 7)

- | | |
|--|--|
| <p>A 1C-20992L (High) No. 2 side frame, left, for Style 42 and 44 stands
1D-20992AL (Low) No. 2 side frame, left, for Style 41 and 43 stands</p> <p>B 20946ZL retaining cup, left rear
1-20946ZL retaining cup assembly, left rear, for Style 41H13 and 43H stands
11-20946ZL retaining cup assembly, left rear, for Style 43HE stand
21-20946ZL retaining cup assembly, left rear, for Style 42H9 and 44H stands</p> <p>C 20945$\frac{1}{2}$Z hex. lock nut, included in B, for Style 41H13, 42H9, 43H, 43HE, 44H stands</p> <p>D 20947$\frac{1}{2}$ZL oilite bushing, included in B, for Style 41H13, 42H9, 43H, 43HE, 44H stands</p> <p>E 1C-20992R (High) No. 2 side frame, right, for Style 42 and 44 stands
1D-20992AR (Low) No. 2 side frame, right, for Style 41 and 43 stands</p> | <p>F 20946ZR retaining cup, right rear
1-20946ZR retaining cup assembly, right rear, for Style 41H13 and 43H, low stand
11-20946ZR retaining cup assembly, right rear, for Style 42H9 and 44H, high stand</p> <p>G 20947$\frac{1}{2}$ZR oilite bushing, included in F, for Style 41H13, 42H9, 43H, 43HE, 44H, stands</p> <p>H 20927$\frac{1}{2}$A No. 2 machine rest, for Style 33, 34, 35, 36, 42H9, 42H13, 44H stands</p> <p>I 20952$\frac{1}{2}$B hex. head screw, 2 req.</p> <p>J 9831 space washer, 2 req.</p> <p>K 20927$\frac{1}{2}$Z No. 1 spring retainer, for Style 41H13, 42H9, 43H, 43HE, 44H stands</p> <p>L 12013 space washer, 2 req.</p> <p>M 393 hex. nut, 2 req.</p> <p>N 182A compression spring</p> <p>O 20927$\frac{1}{2}$Z No. 2 limit stop, for Style 43HE stand
20927$\frac{1}{2}$Z No. 3 limit stop, for Style 42H9, 44H</p> <p>P 20945$\frac{1}{2}$A elastic stop nut, 2 req.</p> |
|--|--|

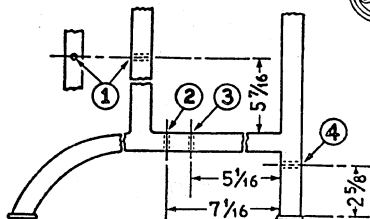
RAISING AND LOWERING DEVICE FOR STYLE 31-36 AND 41-44 STANDS (Plate 8)

ILLUSTRATION NO. 2.

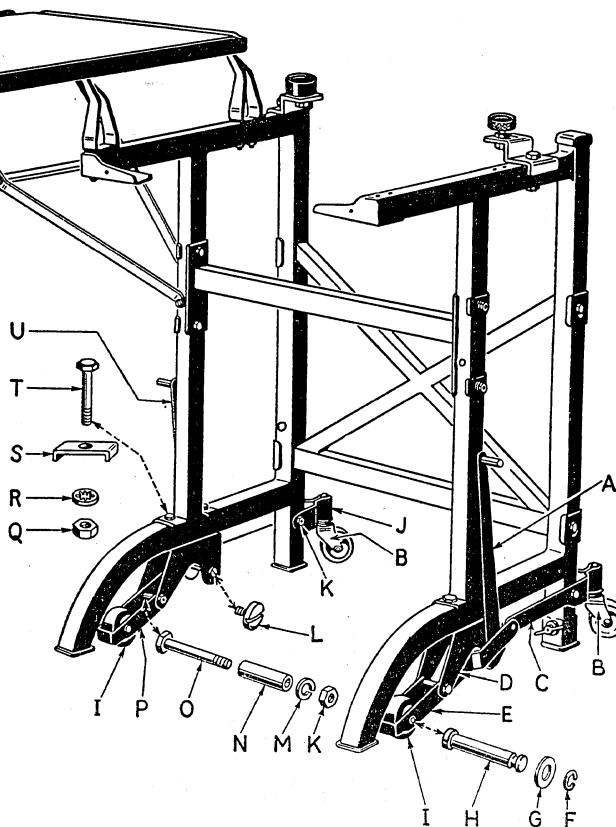
ILLUSTRATION NO. 1



HOLE LOCATIONS



Use drill size 25/64" for drilling holes



PART NUMBERS (Plate 8)

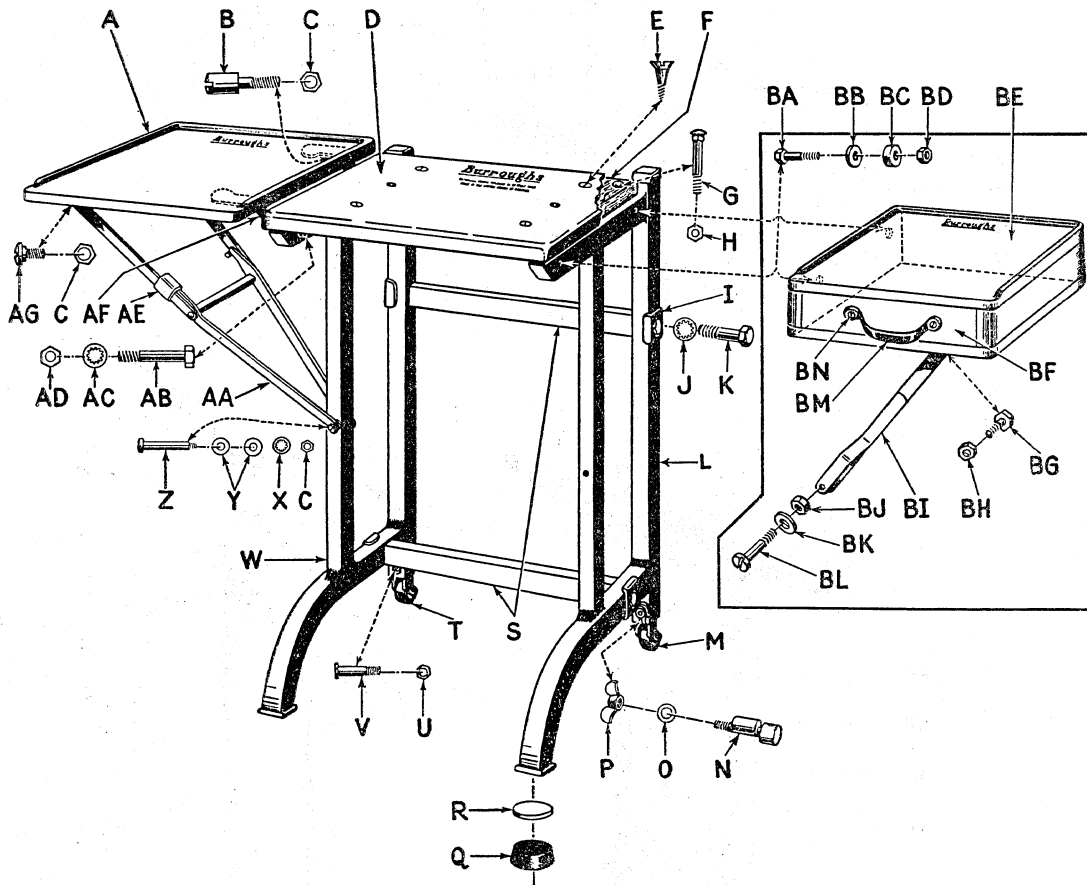
2Z-20918 1/2 complete assembly of parts required for installing raising and lowering device on Style 31-36 stands manufactured prior to 9-17-36 as shown on illustration No. 1

12-20918 1/2 complete assembly of parts required for installing raising and lowering device on Style 31-36 and 41-44 stands manufactured after 9-17-36 as shown on illustration No. 2

- A 1-20918 1/2 R lever, right
- B 1-20997 1/2 A No. 2 complete caster, 2 req.
- C 1-20913 3/4 R pivot arm, rear
- D 20917 3/4 bracket, 2 req.
- E 1-20913 3/4 R pivot arm, front
- F 69771 wire ring, 2 req.
- G 811 1/2 washer, 2 req.
- H 20963 3/4 axle for front caster, 2 req.
- I 20997 1/2 A No. 2 caster wheel only, 2 req.
- J 1-20913 3/4 L pivot arm, rear
- K 393 hex. nut, 2 req.

- L 3457 screw, 2 req.
- M 1097 1/8 lockwasher, 2 req.
- N 20945 1/8 space collar, 2 req.
- O 20962 1/2 hex. head screw, 2 req.
- P 1-20913 1/4 L pivot arm, front
- Q 20747 hex. nut, 4 req.
- R 1097 3/8 lockwasher, 4 req.
- S 20910 No. 2 reinforcement plate, 4 req.
- T 20950 1/8 hex. head screw, 4 req.
- U 1-20918 1/2 L lever, left
- AA 20910Z No. 6 bracket, 20950 1/8 screw, 20747 hex. nut, 2 ea. req.
- AB 20910 No. 2 reinforcement plate, 20950 1/8 screw, 4 ea. req.
- AC 20910Z No. 5 bracket, 20950 1/8 screw, 20747 hex. nut, 2 ea. req.
- AD 20747 hex. nut, 2 req. included in AC
- AE 20917 3/4 Z bracket, 2 req., 20950 1/8 screw, 4 req., 20747 hex. nut, 4 req.
- AF 20910Z No. 4 latch plate, 2 req., 20950 1/8 screw, 4 req., 20747 hex. nut, 4 req.
- AG 20950 1/8 hex. head screw, 4 req., included in AF

STYLE 50 STAND—EARLY STYLE—FOR TYPEWRITER (Plate 9)



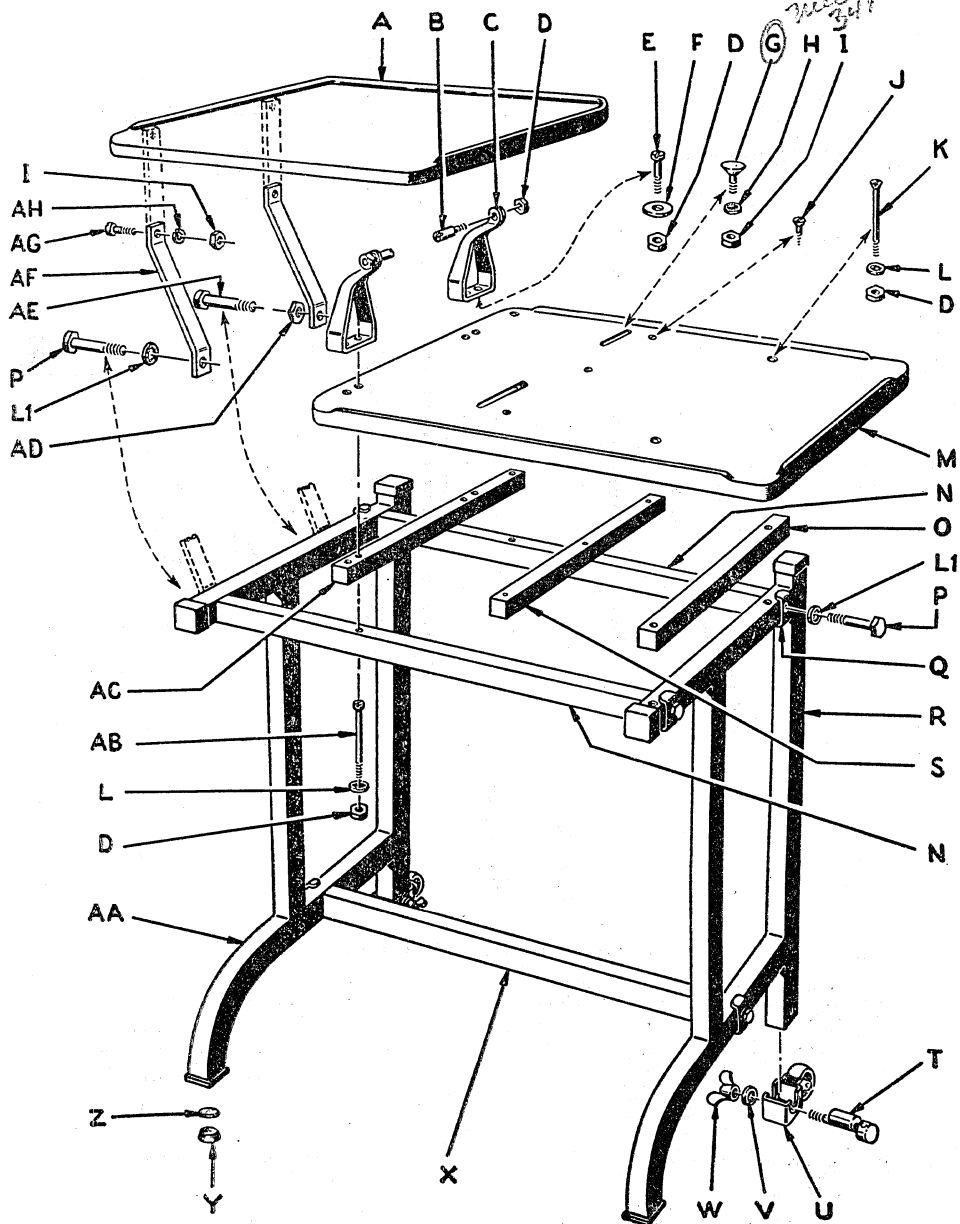
PART NUMBERS (Plate 9)

Complete stand is not available, only component parts will be furnished.

A 1A-20995 No. 3 check table
 B 20952 screw, 2 req., included in AF
 C 393 hex. nut, 2 req., included in AF
 D 1Z-20925 metal top, includes F
 E 20958 wood screw, 4 req.
 F 20994 wooden panel, included in D
 G 20959 carriage bolt, 4 req.
 H 20945 1/2 hex. nut, 4 req.
 I 20910 reinforcement plate, 4 req.
 J 1097 1/4 lockwasher, 4 req.
 K 20950A hex. head screw, 4 req.
 L 1A-20992AR No. 3 side frame, right, includes Q, R
 M 1A-20997 1/2 complete caster assembly
 N 20960A eccentric shoulder screw
 O 20929 space washer
 P 20947 1/2 wing nut
 Q 20999 rubber foot, included in L
 R 20922 3/4 steel insert, included in L
 S 1-20998 No. 3 brace, 2 req.
 T 11A-20997 1/2 complete caster assembly
 U 48 1/2 hex. nut
 V 20955A screw
 W 1A-20992AL No. 3 side frame, left, includes Q, R

X 1097 1/4 lockwasher
 Y 925 1/2 space washer, 2 req.
 Z 20954 shoulder screw
 AA 1-20916 1/4 L No. 3 check table support
 AB 1-20951A hex. head screw, includes AC, AD, 2 req.
 AC 1097 1/4 lockwasher, included in AB, 2 req.
 AD 199 Style 9 hex. nut, included in AB, 2 req.
 AE 20926 3/4 L locking sleeve
 AF 1-20926 (Low) No. 1 bracket, includes B, C, 2 req.
 AG 20954 1/2 B shoulder screw, 2 req.
 BA 20950 3/4 screw, 2 req.
 BB 20929 space washer, 2 req.
 BC 20930 space collar, 2 req.
 BD 48 1/2 hex. nut, 2 req.
 BE 11-20995 No. 3 drawer housing and check table
 BF 1-20912 drawer only, includes BM, BN
 BG 20953 hex. head screw
 BH 199 Style 9 hex. nut
 BI 1-20916 1/4 No. 4 drawer support
 BJ 393 hex. nut
 BK 925 1/2 space washer
 BL 20954 shoulder screw
 BM 20920 1/4 drawer handle
 BN 8055 1/4 screw, 45 3/4 hex. nut, 2 ea. req.

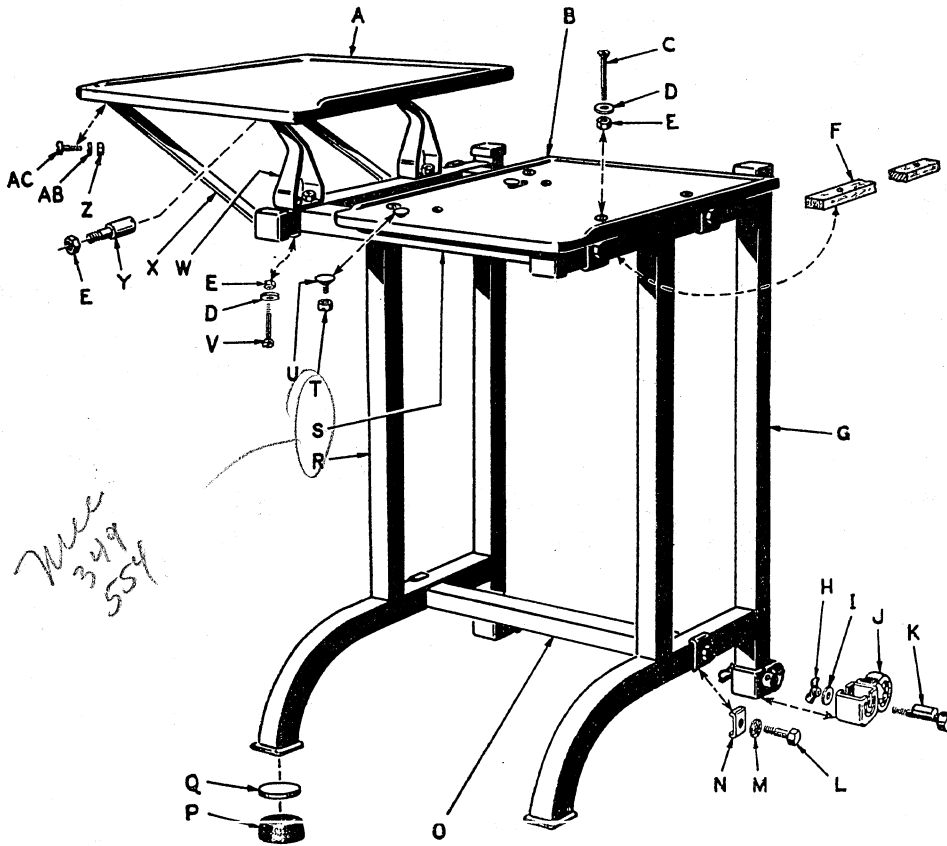
STYLE 45 AND 46 STANDS FOR SERIES C AND P MACHINES (Plate 10)



PART NUMBERS (Plate 10)

Style 45 Low Stand Style 46 High Stand		
A	21C-20995L No. 3 check table	J 20457 1/4 wood screw, 3 req.
B	20952 screw, 2 req., included in C	K 20959 1/2 A screw, 2 req.
C	1-20926 No. 2 check table bracket, 2 req., includes B, D	L 1097 1/8 lockwasher, 2 req.
D	393 hex. nut, 6 req., 2 included in C	L1 1097 7/8 lockwasher, 6 req.
E	20964 1/2 A No. 1 hex. head screw, 4 req.	M 20995 No. 7 machine rest
F	203138 1/2 space washer, 4 req.	N 1-20995A No. 5 brace (upper), 2 req.
G	20958 1/4 flat headed screw, 2 req., invert for machines with rocker type feet	O 20999 1/2 AR wooden block
H	20958 1/4 No. 3 flat headed screw, 2 req., for grommet type feet	P 20950 1/8 hex. head screw, 6 req.
I	1097 1/8 lockwasher, 2 req.	Q 20910 No. 2 reinforcement plate, 6 req.
	20947 3/4 round slotted nut, 2 req., invert for machines with rocker type feet	R 1-20992AR (Low) No. 5 side frame, right, for Style 45 stand, includes Y, Z
		S 1-20992AR (High) No. 5 side frame, right, for Style 46 stand, includes Y, Z
		T 20994 1/2 A wooden block
		U 20960A eccentric shoulder screw, 2 req.
		V 21-20997 1/2 complete caster, 2 req.
		W 20964 1/2 hex. head screw, 2 req.
		X 20947 1/2 winged nut, 2 req.
		Y 1-20998A No. 6 brace (lower)
		Z 20999 rubber foot, 2 req., included in R, AA
		AA 20922 1/4 steel insert, 2 req., included in R, AA
		AB 1-20992AL (Low) No. 5 side frame, left, for Style 45 stand, includes Y, Z
		AC 1-20992AL (High) No. 5 side frame, left, for Style 46 stand, includes Y, Z
		AD 20964 1/2 A No. 2 hex. head screw
		AE 20994 1/2 AL wooden block
		AF 4647 hex. nut, 2 req.
		AG 20950A hex. head screw, 2 req.
		AH 20916C brace, 2 req.
		AI 9251 1/2 screw, 2 req.
		AL 1097 1/4 lockwasher, 2 req.

STYLE 65, 65A, 66, 66A STANDS FOR SERIES C AND P MACHINES (Plate 11)

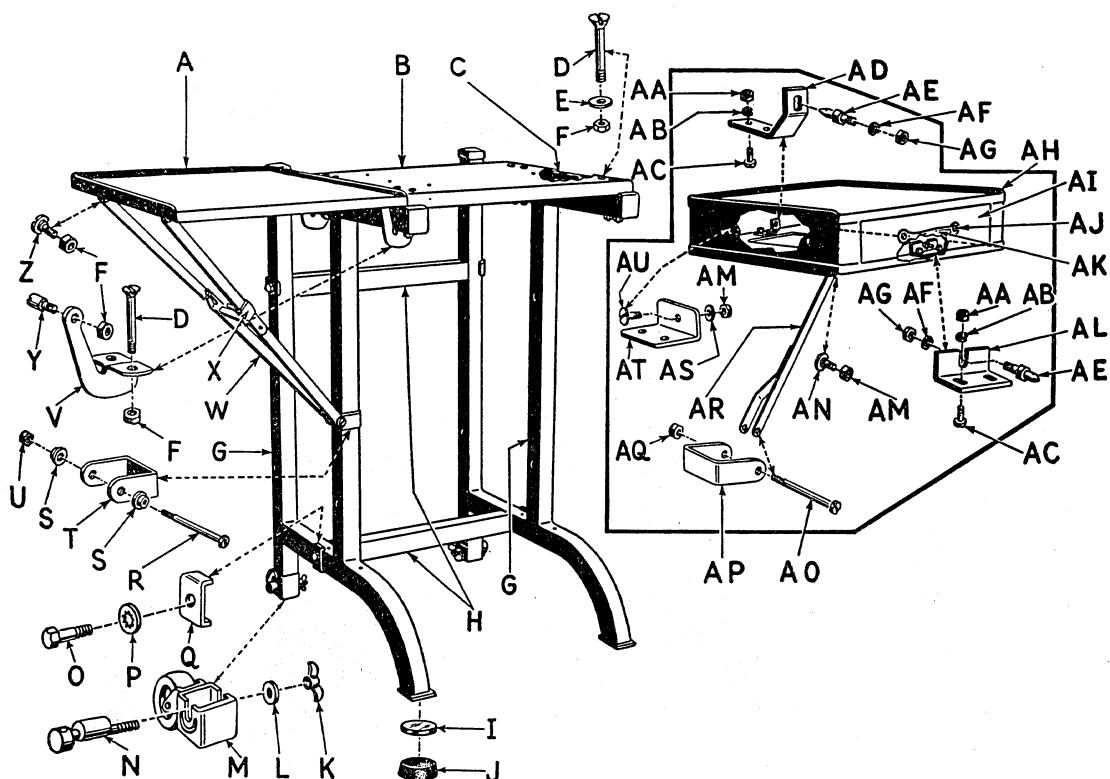


PART NUMBERS (Plate 11)

Style 65 and 65A Low Stand
Style 66 and 66A High Stand

- | | | | |
|---|--|----|--|
| A | 21C-20995L No. 3 check table | P | 20999 rubber foot, 2 req., included in G, R |
| B | 20925 No. 7 machine rest | Q | 20922 $\frac{1}{4}$ steel insert, 2 req., included in G, R |
| C | 20959 $\frac{1}{2}$ B screw, 4 req. | R | 1A-20992AL (Low) No. 5 side frame, left, for Style 65 and 65A stand, includes P, Q |
| D | 20929 $\frac{1}{4}$ washer, 4 req. | | 1A-20992AL (High) No. 5 side frame, left, for Style 66 and 66A stand, includes P, Q |
| E | 393 hex. nut | S | 1-20998 No. 9 brace, 2 req., for Style 65A and 66A stands |
| F | 20994 $\frac{1}{2}$ BR wooden strip | T | 20947 $\frac{1}{4}$ round slotted nut, 2 req., invert for machines with rocker type feet |
| G | 20994 $\frac{1}{2}$ BL wooden strip | U | 20958 $\frac{1}{4}$ flat headed screw, 2 req., invert for machines with rocker type feet |
| | 1A-20992AR (Low) No. 5 side frame, right, for Style 65 and 65A stand, includes P, Q | | 20958 $\frac{1}{4}$ No. 3 flat headed screw, 2 req., for grommet type feet |
| | 1A-20992AR (High) No. 5 side frame, right, for Style 66 and 66A stand, includes P, Q | V | 20964 $\frac{1}{2}$ hex. head screw, 4 req. |
| H | 20947 $\frac{1}{2}$ winged nut, 2 req. | W | 1-20926 No. 2 bracket, 2 req., includes E, Y |
| I | 20929 washer, 2 req. | X | 20916D brace, 2 req. |
| J | 21-20997 $\frac{1}{2}$ complete caster, 2 req. | Y | 20952 screw, 2 req., included in W |
| K | 20960A eccentric shoulder screw, 2 req. | Z | 45 hex. nut, 2 req. |
| L | 20950 $\frac{1}{8}$ hex. head screw, 6 req. | AB | 1097 $\frac{1}{4}$ lockwasher, 2 req. |
| M | 1097 $\frac{3}{8}$ lockwasher, 6 req. | AC | 9251 $\frac{1}{8}$ screw, 2 req. |
| N | 20910 No. 2 reinforcement plate, 6 req. | | |
| O | 1-20998 No. 5 brace, 1 req. for 65 and 65A—2 req. for 66 and 66A stands | | |

STYLE 67 STAND—LATER STYLE—FOR TYPEWRITER (Plate 12)

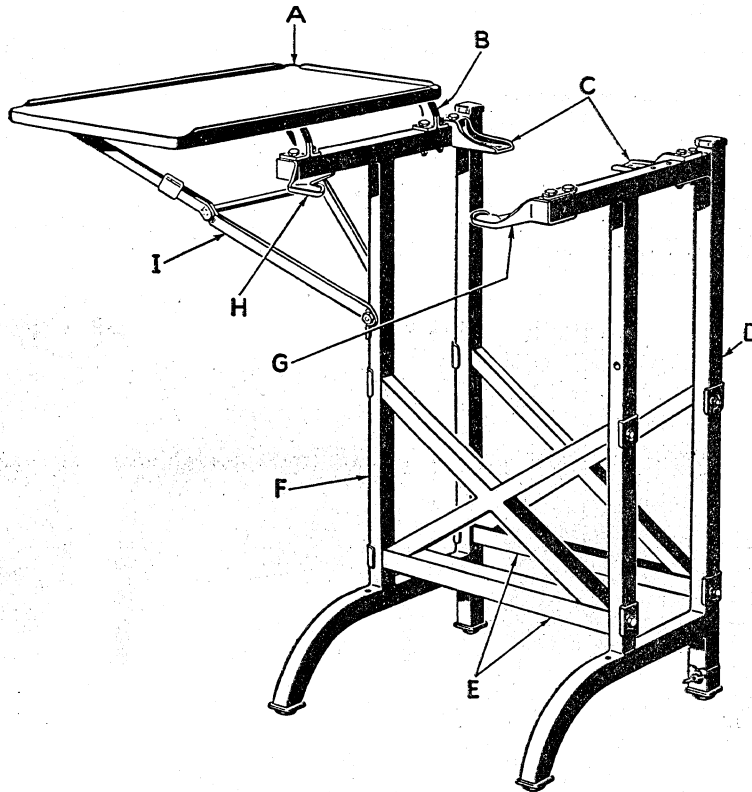


PART NUMBERS (Plate 12)

Complete stand is not available,
only component parts will be fur-
nished.

A	1-20995 No. 3 check table	V	1-20926 No. 7 bracket, 2 req.
B	20925A No. 6 machine rest	W	1-20916 1/4 A No. 3 check table support
C	20994 1/2 wood strip, 2 req.	X	20926 3/4 No. 2 locking sleeve
D	20959 1/2 B screw	Y	20952 screw, 2 req.
E	20929 3/4 washer	Z	20954 1/2 B shoulder screw, 2 req.
F	393 hex. nut	AA	46 hex. nut, 4 req.
G	1-20992 (Low) No. 5 side frame, in- cludes I, J, 2 req.	AB	1097 3/4 lockwasher, 4 req.
H	1-20998 No. 5 brace, 2 req.	AC	74523 screw, 4 req.
I	20922 3/4 steel insert, included in G, 2 req.	AD	20914 1/4 bracket
J	20999 rubber foot, included in G, 2 req.	AE	20951 1/2 locking pin
K	20947 1/2 wing nut, 2 req.	AF	1097 3/4 lockwasher
L	20929 washer, 2 req.	AG	47 hex. nut
M	21-20997 1/2 caster, 2 req.	AH	31-20995 No. 3 drawer housing and table, includes AA, AB, AC, AD, AL
N	20960A eccentric shoulder screw, 2 req.	AI	1A-20912 drawer assembly, includes AE, AF, AG, AJ, AK
O	20950 1/2 hex. head screw, 4 req.	AJ	8055 3/4 screw, use 45 3/4 hex. nut, 2 ea. req.
P	1097 3/4 lockwasher, 4 req.	AK	20920 1/4 handle
Q	20910 No. 2 reinforcement plate, 4 req.	AL	20914 bracket
R	20950 3/8 screw	AM	45 hex. nut
S	317 Fte. 207 spacing collar, 2 req.	AN	51 1/2 Fte. 104 shoulder screw
T	20910 No. 7 U-clamp	AO	20950 3/8 screw
U	194 hex. nut	AP	20910 No. 7 U-clamp
		AQ	194 hex. nut
		AR	1-20916 1/4 A No. 4 brace for drawer housing
		AS	28229 space washer
		AT	20926 No. 8 bracket for drawer hous- ing, 2 req.
		AU	12355 screw

STYLE 90 STAND FOR SERIES V MACHINES (Plate 13)



PART NUMBERS (Plate 13)

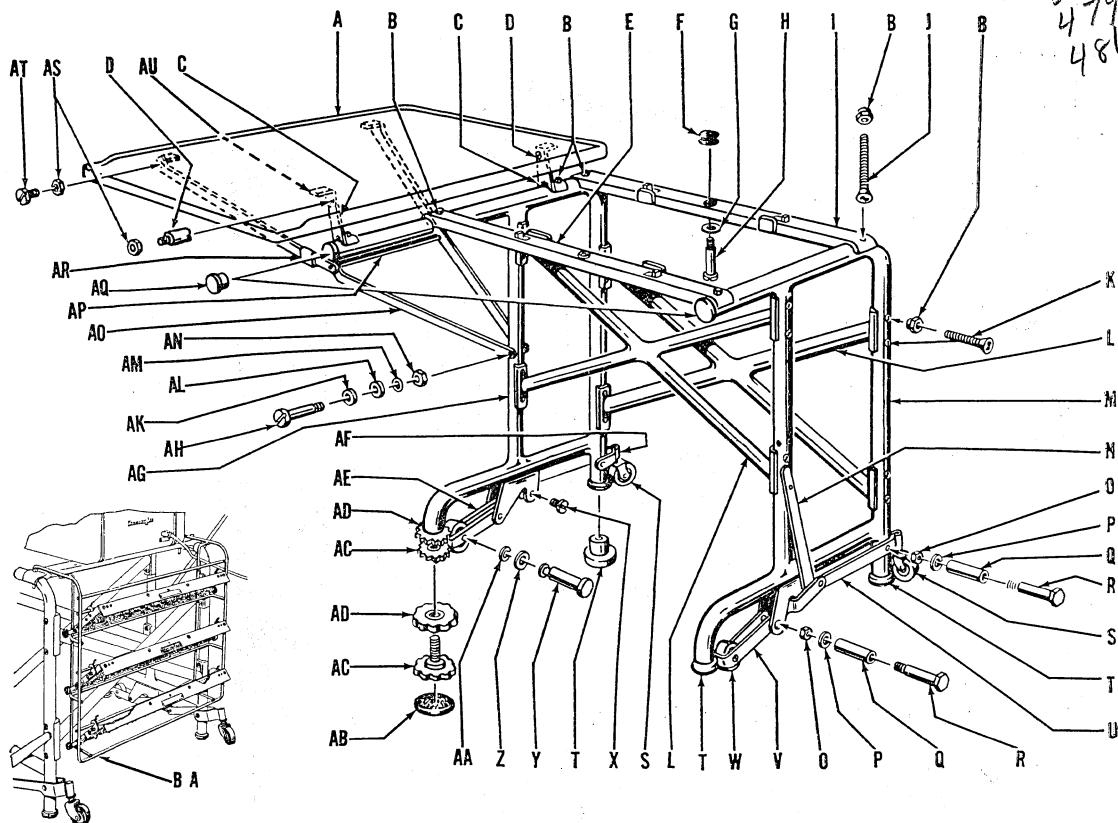
Note: Style 90 stand replaces
Style 42V stand (see Plate 5)

Parts not lettered are the same as
those illustrated on Plates 2, 3 and
4.

- A 71-20995L No. 2 check table (gray 211)
- B 11-20926 1/2 No. 4 bracket, use 20964 1/2 A No. 2 screw, 305 Fte. 217 space collar, 393 hex. nut
- C 20967 1/2 No. 2 machine rest, rear, 2 req.
- D 1-20992R (High) No. 6 side frame, right
- E 1-20998 Style 13 (Low) No. 2 cross-brace, 2 req.
- F 1-20992L (High) No. 6 side frame, left
- G 20967R No. 2 machine rest, right front
- H 20967L No. 2 machine rest, left front
- I 1-20916 1/4 L No. 2 check table support

STYLE 91A STAND FOR SERIES F MACHINES (Plate 14)

new
386
479
486



PART NUMBERS (Plate 14)

- | | | | | | |
|---|--|----|--|----|---|
| A | 81-20995L No. 2 check table, left (gray 211) | N | 1-20918 1/4 R and L lever (gray 211) | AG | 1-20992L No. 7 side frame, left (gray 211) |
| | 81A-20995L No. 2 check table, left (gray 202) | O | 393 hex. nut, 4 req. | | 1A-20992L No. 7 side frame, left (gray 202) |
| B | 20945 1/2 A hex. nut, 22 req. | P | 1097 1/2 lockwasher, 4 req. | AH | 20954 screw |
| C | 20926 No. 11 check table hinge bracket, 2 req. (gray 211) | Q | 20945 1/2 space collar, 4 req. | AK | 925 1/2 space washer |
| | 20926A No. 11 check table hinge bracket, 2 req. (gray 202) | R | 20962 1/2 hex. head screw, 4 req. | AL | 925 1/2 space washer |
| D | 20952 long head screw, 2 req. | S | 1-20997 1/2 A No. 2 complete caster, 2 req. | AM | 1097 1/2 lockwasher |
| E | 1-20927 1/2 A No. 3 machine rest, front (gray 211) | T | 20938 1/4 rubber foot, 3 req. | AN | 393 hex. nut |
| | 1A-20927 1/2 A No. 3 machine rest, front (gray 202) | U | 1-20913 3/4 R pivot arm, rear (gray 211) | AO | 1-20916 1/4 L No. 2 check table support (gray 211) |
| F | 93 1/2 No. 10 rubber grommet, included in E | V | 1-20913 1/4 R pivot arm, front (gray 211) | | 11-20916 1/4 L No. 2 check table support (gray 202) |
| G | 203138 1/2 washer, 2 req. | W | 20997 1/4 A No. 2 caster wheel, 2 req. | AP | 1-20992 1/2 extension tube (gray 211) |
| H | 20960 1/2 shoulder screw, regular legs, 2 req. | X | 3457 screw, 2 req. | | 1A-20992 1/2 extension tube (gray 202) |
| | X60-64 shoulder screw, extension legs, 2 req. | Y | 20963 1/2 axle for front caster, 2 req. | AQ | 20938 1/2 A end plug (gray 211) |
| I | 1-20927 1/2 A No. 4 machine rest, rear (gray 211) | Z | 811 1/2 washer, 2 req. | AR | 20926 3/4 L locking sleeve (gray 211) |
| | 1A-20927 1/2 A No. 4 machine rest, rear (gray 202) | AA | 69771 retaining ring, 2 req. | | 20926 3/4 L No. 2 locking sleeve (gray 202) |
| J | 20952 1/2 clutch head screw, 6 req. | AB | 20999 No. 2 rubber foot | AS | 393 hex. nut, 4 req. |
| K | 20950 No. 3 clutch head screw, 16 req. | AC | 1-20921 1/8 No. 1 leveling screw (gray 211) | AT | 20954 1/2 B shoulder screw, 2 req. |
| L | 1-20998 No. 7 cross brace, 2 req. (gray 211) | | 1A-20921 1/8 No. 1 leveling screw (gray 202) | AU | 20911Z No. 4 hinge bracket for check table for field use only, use 9355 screw and 47 nut. Use bracket as a drill template for drilling two 7/8 holes through check table, by locating bracket on spot welding marks remaining on the table. Holes should be countersunk to the full depth of the metal to permit screws to be almost flush with the table top |
| | 1A-20998 No. 7 cross brace, 2 req. (gray 202) | AD | 1-20921 1/8 No. 2 lock nut (gray 211) | | BA |
| M | 1-20992R No. 7 side frame, right (gray 211) | AE | 1-20913 1/4 L pivot arm, front (gray 211) | | 1-28902 control unit holder for Series F machine stands all styles (capacity 3 extra program units) |
| | 1A-20992R No. 7 side frame, right (gray 202) | | 21-20913 1/4 L pivot arm, front (gray 202) | | |
| | | AF | 1-20913 1/4 L pivot arm, rear (gray 211) | | |
| | | | 11-20913 1/4 L pivot arm, rear (gray 202) | | |

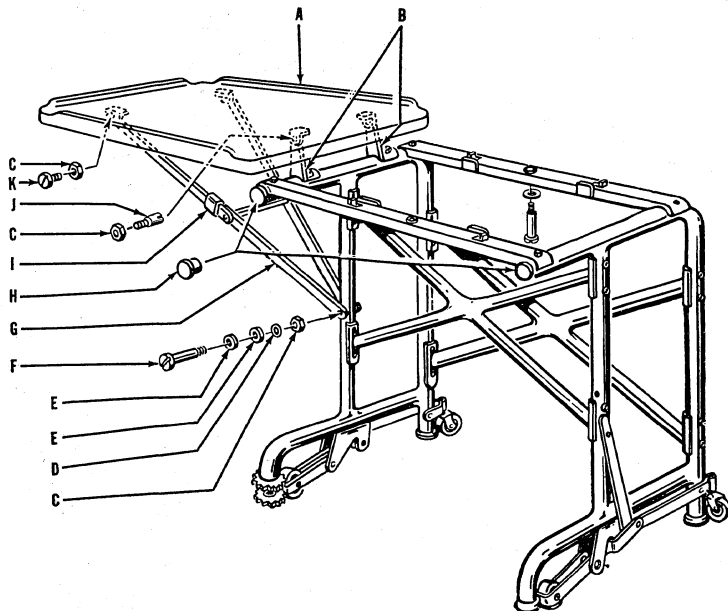
STYLE 91AE STAND FOR SERIES F MACHINES (Plate 15)

Wide Side of Check Table to Front

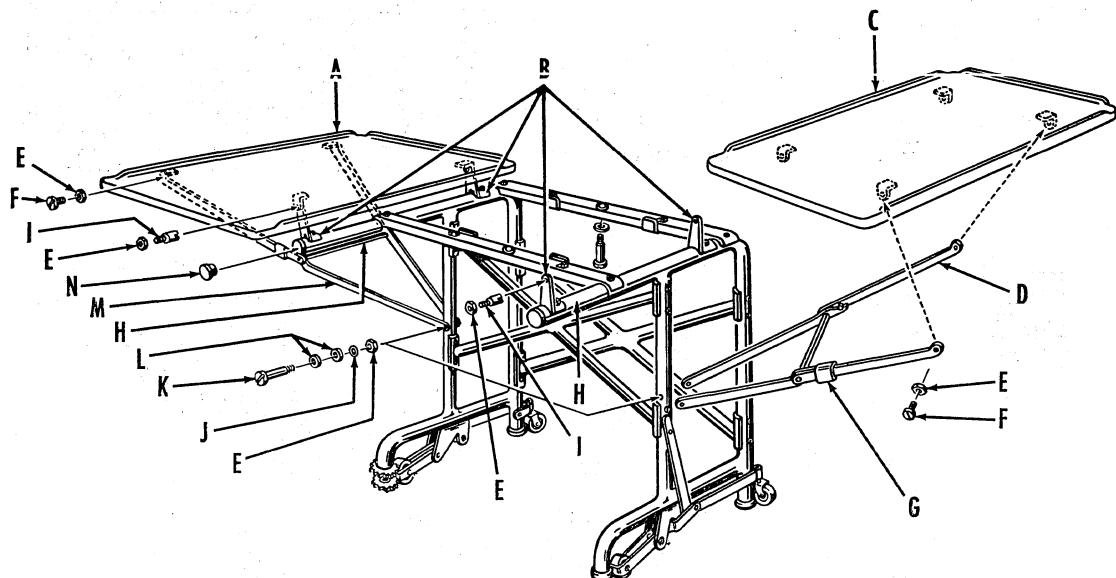
PART NUMBERS (Plate 15)

Parts not lettered are the same as those illustrated on Plate 14.

- A 91-20995L No. 2 check table, left (gray 211)
- 91A-20995L No. 2 check table, left (gray 202)
- B 20926 No. 11 bracket (gray 211)
- 20926A No. 11 bracket (gray 202)
- C 393 hex. nut, 5 req.
- D 1097 $\frac{1}{8}$ lockwasher
- E 925 $\frac{1}{2}$ space washer, 2 req.
- F 20954 screw
- G 1-20916 $\frac{1}{4}$ L No. 3 check table support (gray 211)
- 1A-20916 $\frac{1}{4}$ L No. 3 check table support (gray 202)
- H 20938 $\frac{1}{2}$ end plug (gray 211)
- 20938 $\frac{1}{2}$ A end plug (gray 202)
- I 20926 $\frac{1}{4}$ L locking sleeve (gray 211)
- 20926 $\frac{1}{4}$ L No. 2 locking sleeve (gray 202)
- J 20952 screw, 2 req.
- K 20954 $\frac{1}{2}$ B shoulder screw, 2 req.



STYLE 91AF STAND FOR SERIES F MACHINES (Plate 16)

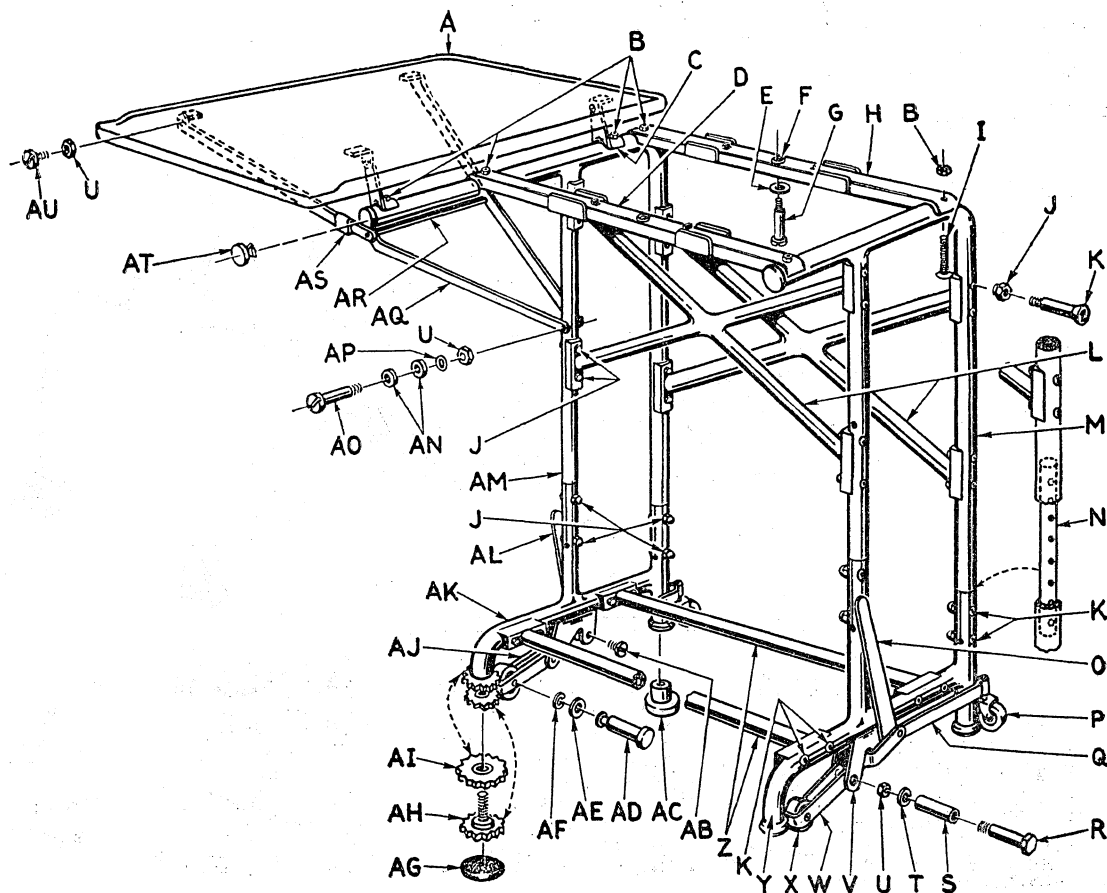


PART NUMBERS (Plate 16)

Parts not lettered are the same as those illustrated on Plate 14.

- | | | |
|---|---|---|
| <ul style="list-style-type: none"> A 81-20995L No. 2 check table, left (gray 211) 81A-20995L No. 2 check table, left (gray 202) B 20926 No. 11 bracket (gray 211), 4 req. 20926A No. 11 bracket (gray 202), 4 req. C 81-20995R No. 2 check table, right (gray 211) | <ul style="list-style-type: none"> 81A-20995R No. 2 check table, right (gray 202) D 1-20916 $\frac{1}{4}$ R No. 2 check table support, right (gray 211) 11-20916 $\frac{1}{4}$ R No. 2 check table support, right (gray 202) E 393 hex. nut, 10 req. F 20954 $\frac{1}{2}$ B shoulder screw, 4 req. G 20926 $\frac{1}{4}$ R locking sleeve (gray 211) 20926 $\frac{1}{4}$ R No. 2 locking sleeve (gray 202) H 1-20992 $\frac{1}{8}$ extension tube (gray 211), 2 req. | <ul style="list-style-type: none"> 1A-20992 $\frac{1}{8}$ extension tube (gray 202), 2 req. I 20952 screw, 4 req. J 1097 $\frac{1}{8}$ lockwasher, 2 req. K 20954 screw, 2 req. L 925 $\frac{1}{2}$ space washer, 4 req. M 1-20916 $\frac{1}{4}$ L No. 2 locking sleeve (gray 211), 2 req. 11-20916 $\frac{1}{4}$ L No. 2 locking sleeve (gray 202), 2 req. N 20938 $\frac{1}{2}$ end plug (gray 211), 2 req. 20938 $\frac{1}{2}$ A end plug (gray 202), 2 req. |
|---|---|---|

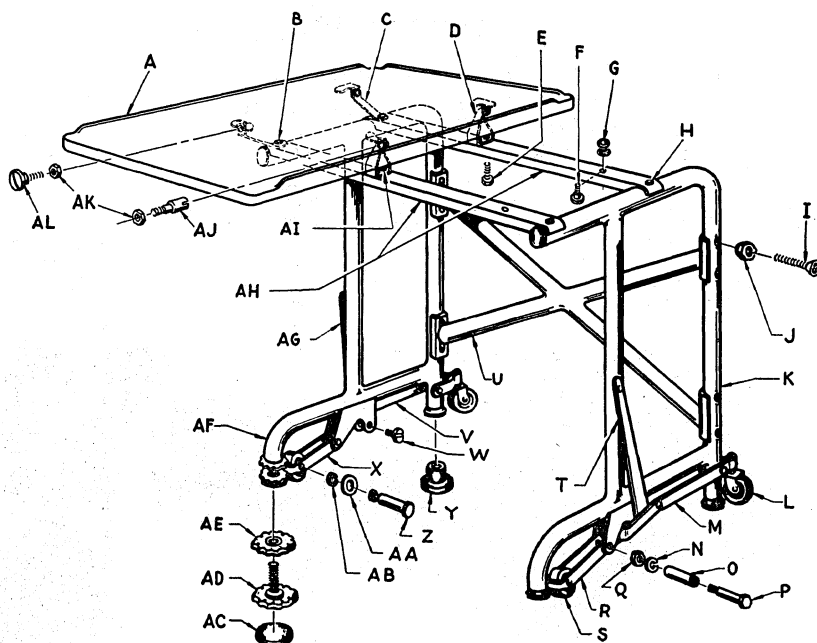
STYLE 92A STAND FOR SERIES F MACHINES (Plate 17)



PART NUMBERS (Plate 17)

- | | | | | |
|---|---|---|----|---|
| A | 81-20995L No. 2 check table, left (gray 211) | 2A-20992R No. 8 complete side frame, right (gray 202) | AH | 1-20921 $\frac{1}{8}$ No. 1 leveling screw (gray 211) |
| B | 81A-20995L No. 2 check table, left (gray 202) | Included in M and AM | AI | 1A-20921 $\frac{1}{8}$ No. 1 leveling screw (gray 202) |
| C | 20945 $\frac{1}{8}$ A hex. nut, use 20952 $\frac{1}{8}$ screw, 6 ea. req. | 1-20918 $\frac{1}{2}$ R lever (gray 211) | AJ | 1-20921 $\frac{1}{8}$ No. 2 lock nut (gray 211) |
| D | 20926 No. 11 bracket, 2 req. (gray 211) | 11-20918 $\frac{1}{2}$ R lever (gray 202) | AK | 1A-20921 $\frac{1}{8}$ No. 2 lock nut (gray 202) |
| E | 20926A No. 11 bracket, 2 req. (gray 202) | 1-20997 $\frac{1}{2}$ A No. 2 complete caster, 2 req. | AL | 1-20913 $\frac{1}{4}$ L lever (gray 211) |
| F | 1-20927 $\frac{1}{4}$ A No. 3 machine rest, front (gray 211) | 11-20913 $\frac{1}{4}$ R and L pivot arm, rear (gray 211) | AM | 1-20918 $\frac{1}{2}$ L lever (gray 211) |
| G | 1A-20927 $\frac{1}{4}$ A No. 3 machine rest, front (gray 202) | 11-20913 $\frac{1}{4}$ R and L pivot arm, rear (gray 202) | AN | 11-20918 $\frac{1}{2}$ L lever (gray 202) |
| H | 203138 $\frac{1}{2}$ washer, 2 req. | R 20962 $\frac{1}{2}$ hex. head screw, 2 req. | AO | 1-20992L No. 8 upper frame, left (gray 211) |
| I | 93 $\frac{1}{2}$ No. 10 rubber grommet, 2 req., included in D and H | S 20945 $\frac{1}{8}$ space collar, 2 req. | AP | 1A-20992L No. 8 upper frame, left (gray 202) |
| J | 20960 $\frac{1}{4}$ shoulder screw, 2 req. | T 1097 $\frac{1}{4}$ lockwasher, 2 req. | AQ | 2-20992L No. 8 complete side frame, left (gray 211) |
| K | X60-64 shoulder screw, extension legs, 2 req. | U 393 hex. nut, 2 req. | AR | 2A-20992L No. 8 complete side frame, left (gray 202) |
| L | 1-20927 $\frac{1}{4}$ A No. 4 machine rest, rear, includes F (gray 211) | V Included in Y and AK | AS | 1-20916 $\frac{1}{4}$ L No. 2 check table support (gray 211) |
| M | 1A-20927 $\frac{1}{4}$ A No. 4 machine rest, rear, includes F (gray 202) | W 1-20913 $\frac{1}{4}$ R pivot arm, front (gray 211) | AT | 11-20916 $\frac{1}{4}$ L No. 2 check table support (gray 202) |
| N | 20952 $\frac{1}{8}$ clutch head screw, 6 req. | X 21-20913 $\frac{1}{4}$ R pivot arm, front (gray 202) | AU | 1-20992 $\frac{1}{8}$ extension tube (gray 211) |
| O | 20945 $\frac{1}{8}$ A hex. nut, 32 req. | Y 20997 $\frac{1}{2}$ A No. 2 caster wheel, 2 req. | | 1A-20992 $\frac{1}{8}$ extension tube (gray 202) |
| P | 20950 No. 3 clutch head screw, 32 req. | Z 1-20992R No. 9 lower frame (gray 211) | | 20926 $\frac{1}{4}$ L No. 2 locking sleeve (gray 211) |
| Q | 1-20998 No. 7 cross brace, 2 req. (gray 211) | 1A-20992R No. 9 lower frame (gray 202) | | 20926 $\frac{1}{4}$ L No. 2 locking sleeve (gray 202) |
| R | 1A-20998 No. 7 cross brace, 2 req. (gray 202) | Z 1-20998 No. 10 brace, lower, 2 req. (gray 211) | | 20926 $\frac{1}{4}$ L No. 2 locking sleeve (gray 202) |
| S | 1-20992R No. 8 upper frame, right (gray 211) | 1A-20998 No. 10 brace, lower, 2 req. (gray 202) | | 20926 $\frac{1}{4}$ L No. 2 locking sleeve (gray 202) |
| T | 1A-20992R No. 8 upper frame, right (gray 202) | AB 3457 screw, 2 req. | | 20926 $\frac{1}{4}$ L No. 2 locking sleeve (gray 202) |
| U | 2-20992R No. 8 complete side frame, right (gray 211) | AC 20938 $\frac{1}{4}$ rubber foot, 3 req. | | 20926 $\frac{1}{4}$ L No. 2 locking sleeve (gray 202) |
| V | | AD 20963 $\frac{1}{2}$ axle for front caster, 2 req. | | 20926 $\frac{1}{4}$ L No. 2 locking sleeve (gray 202) |
| W | | AE 811 $\frac{1}{2}$ washer, 2 req. | | 20926 $\frac{1}{4}$ L No. 2 locking sleeve (gray 202) |
| X | | AF 69771 retaining ring, 2 req. | | 20926 $\frac{1}{4}$ L No. 2 locking sleeve (gray 202) |
| Y | | AG 20999 No. 2 rubber foot | | 20926 $\frac{1}{4}$ L No. 2 locking sleeve (gray 202) |
| Z | | | | 20926 $\frac{1}{4}$ L No. 2 locking sleeve (gray 202) |

STYLE 93 STAND FOR SERIES P 600 MACHINES (Plate 18)



PART NUMBERS (Plate 18)

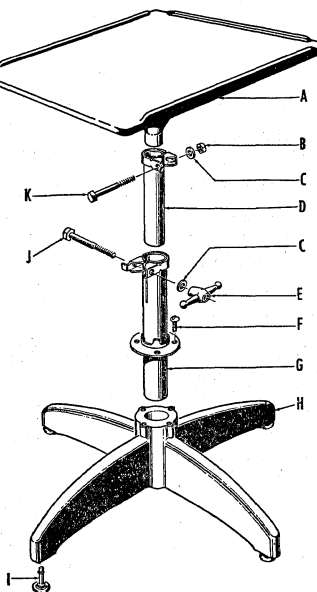
A	101-20995L No. 2 check table	M	11-20913 $\frac{3}{4}$ R pivot arm, rear	AA	811 $\frac{1}{2}$ washer, 2 req.
B	20952 $\frac{1}{2}$ No. 2 clutch head screw, use 20945 $\frac{1}{2}$ A stop nut, 2 ea. req.	N	1097 $\frac{1}{2}$ lockwasher, 4 req.	AB	69771 retaining ring, 2 req.
C	20916 No. 3 bracket, 2 req.	O	20945 $\frac{1}{2}$ space collar, 4 req.	AC	20999 No. 2 rubber foot
D	20926 No. 12 bracket, 2 req.	P	20962 $\frac{1}{2}$ hex. head screw, 4 req.	AD	1A-20921 $\frac{1}{2}$ No. 1 leveling screw
E	200560 screw, 4 req.	Q	393 hex. nut, 4 req.	AE	1A-20921 $\frac{1}{2}$ No. 2 lock nut
F	20954 No. 2 shoulder screw, 2 req.	R	21-20913 $\frac{1}{4}$ R pivot arm, front	AF	1-20992L No. 10 side frame only, left
G	93 $\frac{1}{2}$ No. 10 rubber grommet, 2 req.	S	20997 $\frac{1}{4}$ A No. 2 caster wheel		2-20992L No. 10 complete side frame, left, includes V thru AG
H	20952 $\frac{1}{2}$ clutch head screw, 2 req.	T	11-20918 $\frac{1}{4}$ R lever	AG	11-20918 $\frac{1}{4}$ L lever
I	20950 No. 3 clutch head screw, 8 req.	U	1A-20922 No. 7 cross brace	AH	20927 $\frac{1}{2}$ No. 5 machine rest, 2 req.
J	20945 $\frac{1}{2}$ A elastic stop nut, 8 req.	V	11-20913 $\frac{3}{4}$ L pivot arm, rear	AI	393 hex. nut, 4 req.
K	1-20992R No. 10 side frame only, right	W	3457 screw, 2 req.	AJ	20952 long head screw, 2 req.
L	2-20992R No. 10 complete side frame, right, includes K thru T	X	21-10913 $\frac{1}{4}$ L pivot arm, front	AK	393 hex. nut, 4 req.
		Y	20938 $\frac{1}{4}$ rubber foot, 3 req.	AL	20954 $\frac{1}{2}$ B shoulder screw, 2 req.
		Z	20963 $\frac{1}{2}$ axle for front caster, 2 req.		

STYLE 99 STAND (Plate 19)

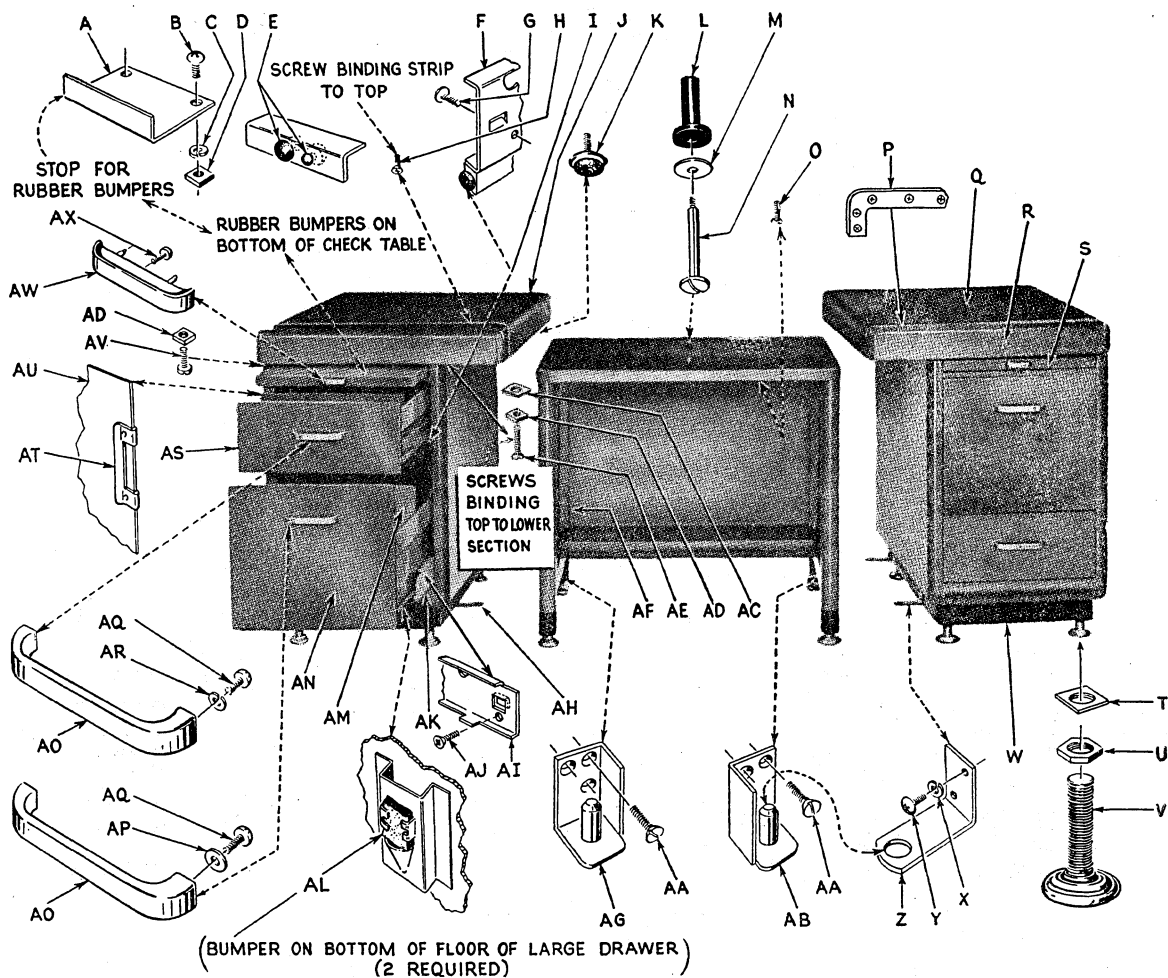
PART NUMBERS (Plate 19)

Complete stand is not available, only component parts will be furnished.

A	1-20895B check table
B	48 $\frac{1}{2}$ hex. nut
C	12029 $\frac{1}{2}$ washer, 2 req.
D	1-20890A steel tube, upper
E	21467 $\frac{1}{2}$ wing nut
F	900555 screw, 4 req.
G	1-20891B steel tube, lower
H	1-20865A base
I	20856A glider, 4 req.
J	20852A hex. head cap screw
K	20852 $\frac{1}{2}$ hex. head cap screw



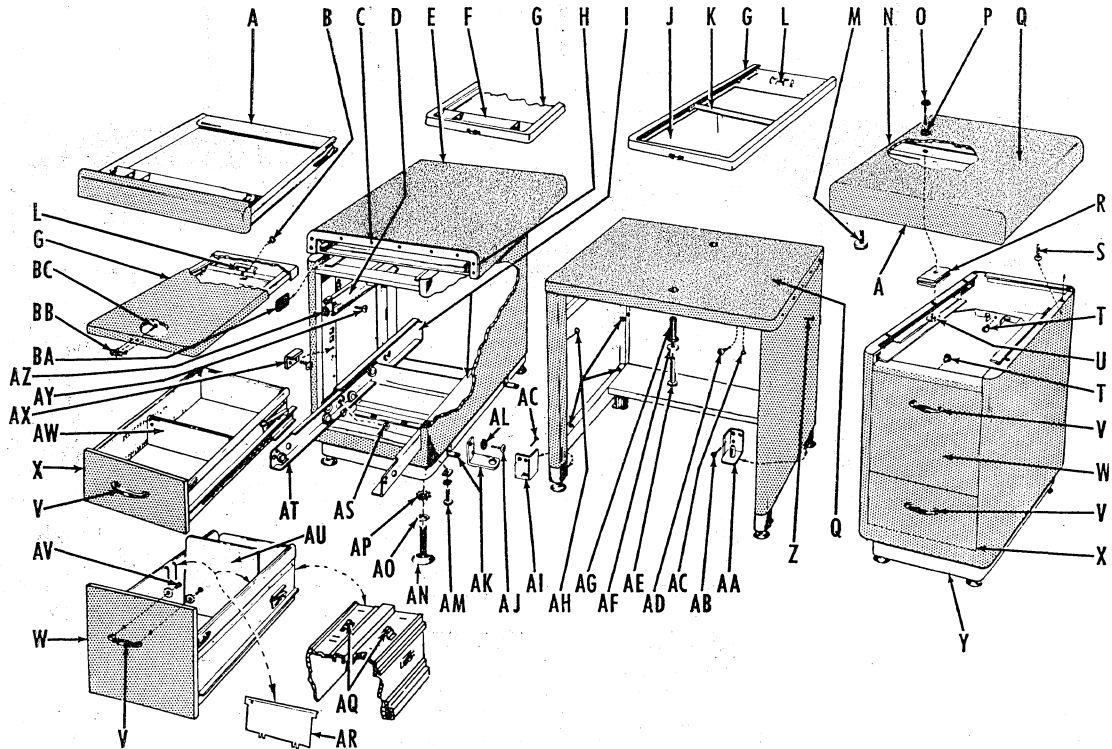
POSTING DESK NO. 1, STYLE A301, FOR SERIES F MACHINE (Plate 20) (Color Gray 211)



PART NUMBERS (Plate 20)

A	YE58950 stop for rubber bumpers on check table	R	YE-BAD 2-1 drawer only—inter-changeable left to right	AF	YE4991 3/8" round head screw
B	YE5406 round head Phillips screw	S	YE-BAT 2-1 pencil tray	AG	YE-BAB 13-3L for left rear, right front
C	YE2723 3/8" lockwasher	T	YE69040 check table	AH	YE69126R or L channel case strip
D	YE1332 3/8" nut	U	YE-BAD 3-3 4 required for each pedestal	AJ	YE5298 3/8" flat head Phillips screw
E	YE04095 rubber bumpers for check table	V	YE05542 locking nut, 4 required for each pedestal	AK	YE58745 cradle slide
F	YE59655R or L channel case strip	W	YE05541 glider, 4 required for each pedestal	AL	YE04824 rubber limit
G	YE4991 3/8" round head Phillips screw	X	YE-BAF 5-1 footing, 4 screws required 1/4"-20x1/2"	AM	YE10513 sliding support
H	YE4991 3/8" round head Phillips screw	Y	YE2723 3/8" lockwasher	AN	YE6991L partition plate
I	YE04095 rubber bumpers, two required	Z	YE5485 3/8" round head Phillips screw	AO	YE62679 letter drawer
J	YE-BAT 1-1L left pedestal top section; does not include drawer	AA	YE-BAB 13-4R bracket	AP	YE56956 handle
K	YE04523 two required for each pedestal	AB	YE1837 1/2" flat head screw	AQ	YE2706 washer
L	400905Z rubber bushing, 2 req.	AC	YE-BAB 13-3R for right rear, left front	AR	YE5406 round head Phillips screw
M	400110Z washer, 2 req.	AD	Use YE1332 nut	AS	YE2723 3/8" lockwasher
N	400503Z screw, 2 req.	AE	YE1899 3/8" screw, used to fasten top section to pedestal	AT	YE62673 card drawer
O	YE4891 3/4" oval head screw			AU	YE52036 clip
P	YE-BAM 1 binding strip			AV	YE67218 partition
Q	YE-BAT 1-1R right pedestal top section; does not include drawer			AW	YE1876 3/8" screw, used to fasten top section to pedestal
				AX	YE56945 handle
					YE440 1/4" round head self-tapping Phillips screw

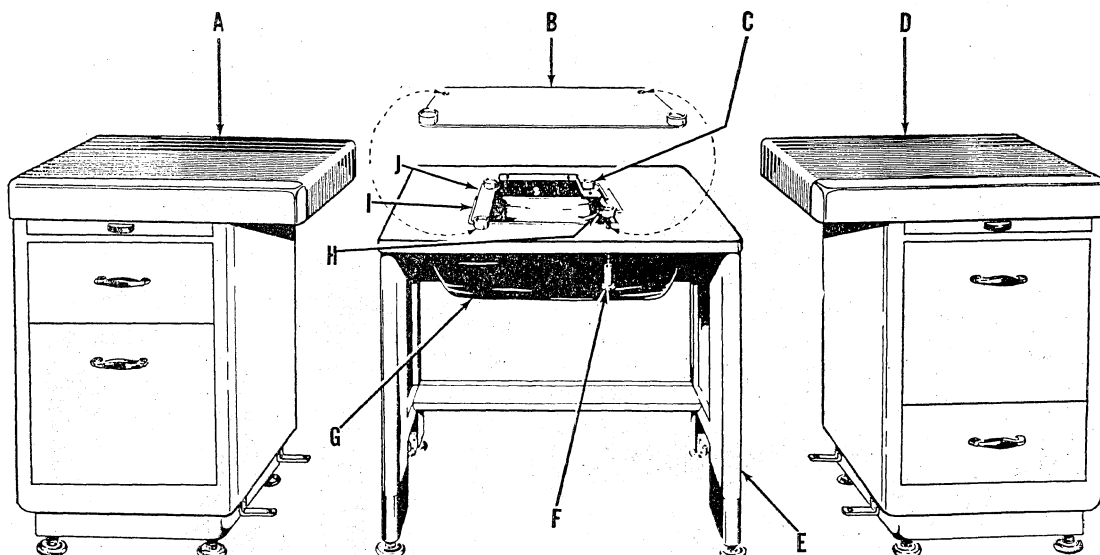
POSTING DESK NO. 2, STYLE A301, FOR SERIES F MACHINES (Plate 21)
(Color Amber Gray Deep 202)



PART NUMBERS (Plate 21)

- | | | | | | |
|---|--|----|---|----|--|
| A | YE-BAD 2-1A top drawer (inter-changeable left to right) | R | YE-BAF 1-6 steel shims, 12 req. | AM | YE5509 1/4 round-head machine screw, 8 req. |
| B | YE5222 round-head "Phillips" self-tapping screw for gravity swing stop | S | YE4991 round-head "Phillips" self-tapping screw, 6 req. | | YE2722 1/4 washer, 8 req. |
| C | YE5298 flat-head "Phillips" self-tapping screw, 18 req. | T | YE04095 rubber bumper, 4 req. | | YE4369 1/4 square nut, 8 req. |
| D | YE79106R&L channel case strip (for card drawer) 2 ea. req. | U | YE1332 square nut, 6 req. | AN | YE05541 glider, 12 req. |
| E | YE-BAT 1-1AL left pedestal top section | V | YE5551 handle, 4 req. | AO | YE05542 hex. nut, 12 req. |
| F | YE7991-1 pin tray (optional) | W | YE72802 letter drawer, 2 req. | AP | Use YE-BAD 3-3 lock nut |
| G | YE79000 check table, 2 req. | X | YE72801 card drawer, 2 req. | AQ | YE04824 rubber limit, 4 req. |
| H | YE-BAM 1-1A edge moulding, 2 req. | Y | YE-BAF 5-1A base for pedestal, 2 req. | AR | YE77200 partition for letter drawer (optional) 1 or more req. |
| I | YE79110R&L cradle slide case strip (for letter drawer) 2 ea. req. | Z | YE4891 oval-head slotted self-tapping screw, 12 req. | AS | YE5298 flat-head "Phillips" self-tapping screw, 4 req. |
| J | YE74600G glass insert for check table (optional) | AA | YE-BAB 13-3AR bracket for right rear and left front, 2 req. | AT | YE58745 cradle slide, 2 req. |
| K | YE74600P plexiglass insert for check table (optional) | AB | YE1837 flat-head slotted machine screw, 12 req. | AU | YE10513A compressor, 2 req. |
| L | YE78902 gravity swing stop | AC | YE4891 oval-head slotted self-tapping screw, 8 req. | AV | YE5554 round-head "Phillips" screw and washer, 8 req. |
| M | YE04523 felt-padded adjustable limit screw, 4 req. | AD | YE4991 round-head "Phillips" self-tapping screw | AW | YE67218A partition for card drawer, 2 or more req. |
| N | YE-BAT 1-1AR right pedestal top section | AE | 400503Z shoulder screw, 2 req. | AX | YE70123 angle iron for supporting case strip when letter drawer is in upper position—use YE4991 round-head "Phillips" self-tapping screw, 2 ea. req. |
| O | YE1840 round head slotted machine screw, 6 req. | AF | 400110Z space washer, 2 req. | AY | YE4991 round-head "Phillips" self-tapping screw, 4 req. |
| P | YE2723 lockwasher, 6 req. | AG | 400905Z rubber insulator, 2 req. | AZ | YE4095 rubber bumper, 4 req. |
| Q | YE-BAV 1-3A vinyl cover for right and left pedestal top | AH | YE4991 round-head "Phillips" self-tapping screw, 12 req. | BA | YE5125 felt pad, 4 req. |
| | YE-BAV 1-4A vinyl cover for center pedestal top | AI | YE-BAB 13-4AR bracket for left rear and right front, 2 req. | BB | YE56945A handle for check table, 2 req. |
| | | AJ | YE5485 round-head "Phillips" screw, 8 req. | BC | YE5222 round-head "Phillips" self-tapping screw, 2 req. |
| | | AK | YE-BAB 13-4AR bracket, 2 req. | | |
| | | AL | YE2723 lockwasher, 8 req. | | |

POSTING DESK STYLE A302 FOR SERIES M MACHINES (Plate 22)



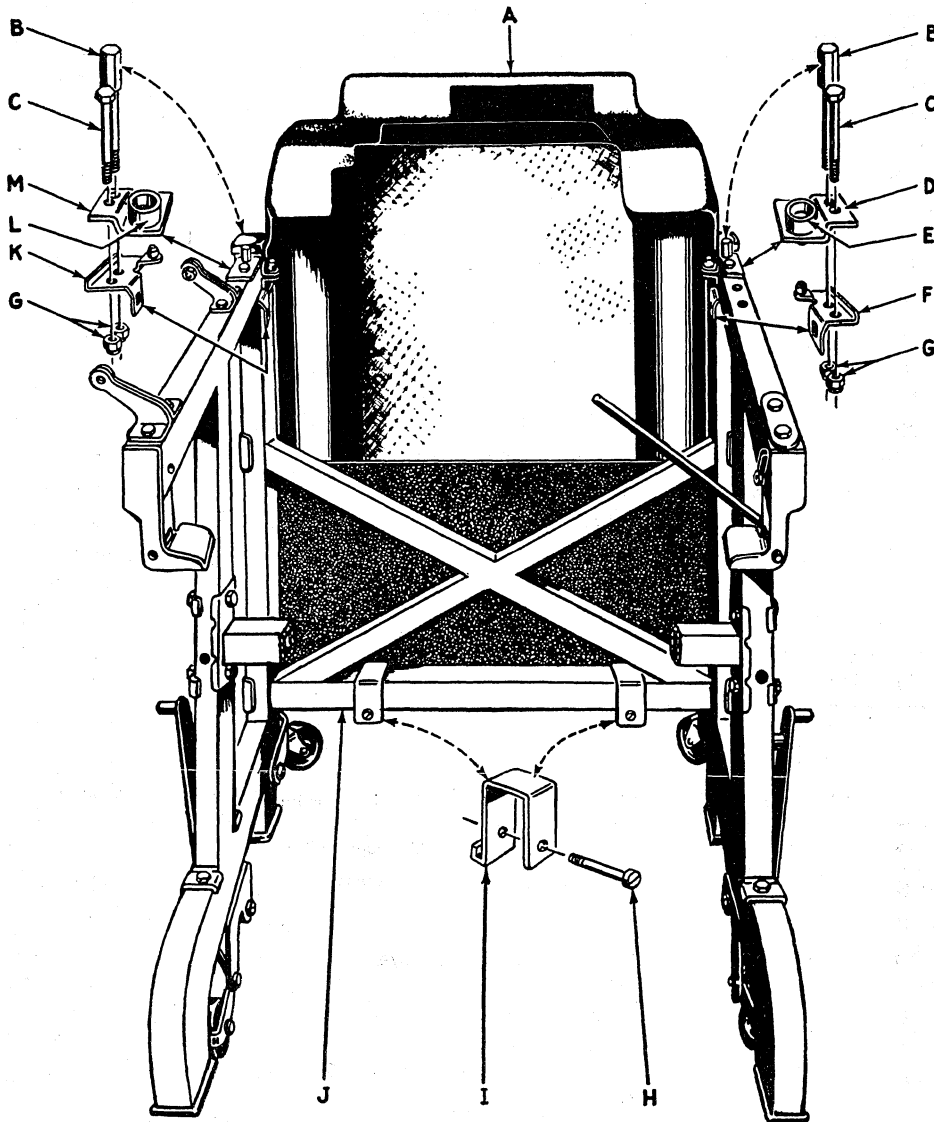
PART NUMBERS (Plate 22)

Parts not lettered are the same as those illustrated on Plate 20.

- A Left pedestal section, Style A301L
- B 1-700110Z extension machine rest assembly for Style 77 machines
- C 700446Z retaining cup, 4 req.
1-700446Z retaining cup assembly, includes C, F, G, H, I, J
- D Right pedestal section, Style A301R
- E Center section, Style A302C
- F 700447Z bushing, 4 req.
- G Apron, see Business Machine Supplies Price List
- H 21 No. 1 clip
- I 700700Z No. 1 machine support rod, front, 2 req.
- J 700700Z No. 2 machine support rod, rear, 2 req.

Replaces General Print 4-3/A

METAL ENCLOSURE FOR STYLE 43H STANDS FOR SERIES H CARRIAGE (Plate 23)



PART NUMBERS (Plate 23)

Parts not lettered are the same as those illustrated on Plate 2.

- A 1-28245 metal enclosure only
2-28245 complete metal enclosure assembly for Style 43H stand (for Field Installation), includes B, C, F, G, H, I, K
- B 28565 hex. head screw, 2 req. (use to anchor apron)
- C 20952 $\frac{3}{8}$ " B hex. head cap screw, 2 req.
- D 20927 $\frac{1}{2}$ " R Style 17 No. 1 rear machine rest
- E 1-20946R retaining cup assembly, right
- F 1-28249R bracket for metal enclosure, right
- G 20945 $\frac{1}{8}$ " A hex. nut, 4 req.

- H 28564 screw, 2 req.
- I 28244 bracket, 2 req.
- J 1-20998 Style 17 (Low) No. 2 cross bar
- K 1-28249L bracket for metal enclosure, left
- L 1-20946L retaining cup assembly, left
- M 20927 $\frac{1}{2}$ " L Style 17 No. 1 rear machine rest

Note: Metal enclosure cannot be used on machines equipped with the following mechanisms:

"Reflector with light for reading cross-footer dials"

"Form ejector carriage"

"Roll paper holder with rewind device"

CHECK TABLE CHART (Plate 24)

CHECK TABLES ONLY

PART NUMBER	STAND STYLE	*SIZE
1A-20995R No. 1	31	18 x 24
1A-20995L No. 1	31	18 x 24
11A-20995R No. 1	32	14 x 17½
11A-20995L No. 1	32	14 x 17½
1-20995R No. 2	Any 33, 34, 35, 36, 41, 43, 44	18 x 24
1-20995L No. 2	Any 33, 34, 35, 36, 41, 43, 44	18 x 24
51-20995R No. 2	42H9, 42H13, 44H	18 x 24
51-20995L No. 2	42H9, 42H13, 44H	18 x 24
71-20995R No. 2	41V, 90, 90F	18 x 24
71-20995L No. 2	41V, 90, 90F	18 x 24
81-20995L No. 2 (Gray 211)	91A, 91AF, 92A, 92AF	18 x 24
81-20995R No. 2 (Gray 211)	91AF, 92AF	18 x 24
81A-20995L No. 2 (Gray 202)	91A, 91AF, 92A, 92AF	18 x 24
81A-20995R No. 2 (Gray 202)	91AF, 92AF	18 x 24
91-20995L No. 2 (Gray 211)	91AE	24 x 18
91A-20995L No. 2 (Gray 202)	91AE	24 x 18
101-20995L No. 2 (Gray 202)	93	18 x 24
1A-20995 No. 3 (Gray 211)	50, 67	14 x 17½
21C-20995L No. 3 (Gray 211)	65, 66, 65A, 66A	14 x 17½
1-20895B (Gray 211)	99	18 x 24

FULLY EQUIPPED CHECK TABLES WITH BRACKETS AND SUPPORTS

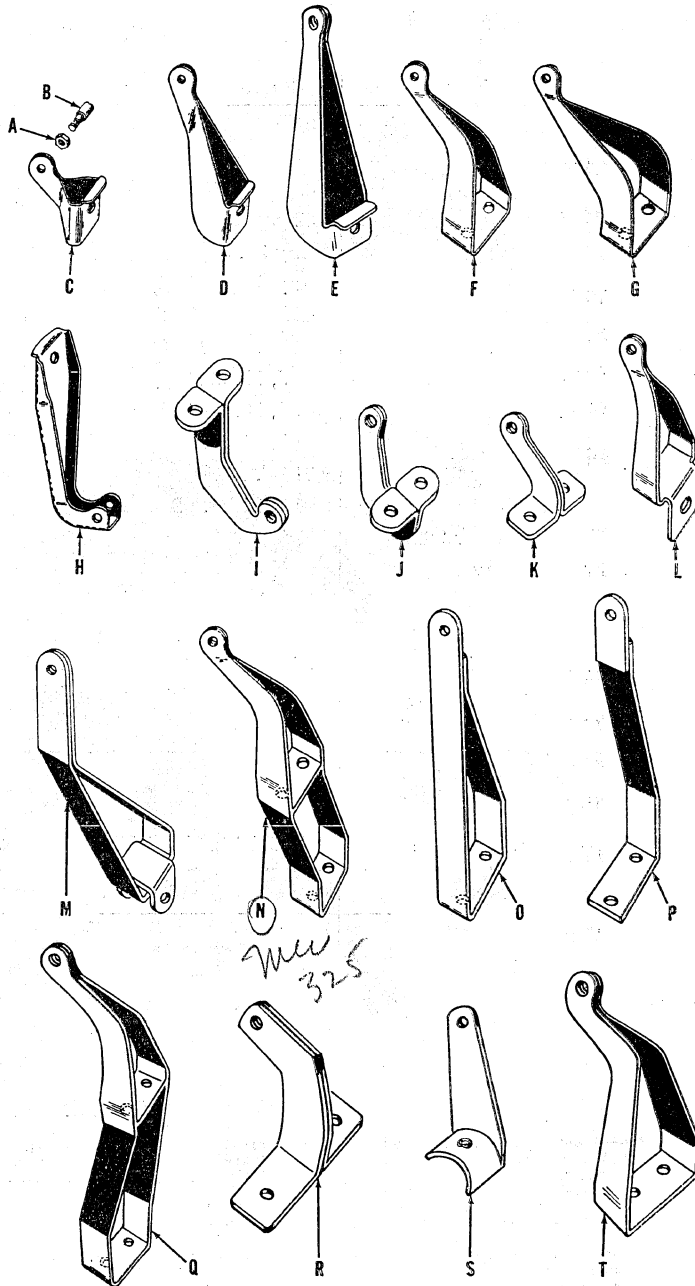
PART NUMBER	STAND STYLE	*SIZE
2Z-20995R No. 1 Low	31	18 x 24
2Z-20995L No. 1 Low	31	18 x 24
12Z-20995R No. 1 High	32	14 x 17½
12Z-20995L No. 1 High	32	14 x 17½
2Z-20995R No. 2	33, 34, 35, 36	18 x 24
2Z-20995L No. 2	33, 34, 35, 36	18 x 24
2AZ-20995R No. 2	41H9, 41H13, 43H, 43HE, 43M, 43MN, 44M, 44MN	18 x 24
2AZ-20995L No. 2	41H9, 41H13, 43H, 43HE, 43M, 43MN, 44M, 44MN	18 x 24
52AZ-20995R No. 2	42H9, 42H13, 44H	18 x 24
52AZ-20995L No. 2	42H9, 42H13, 44H	18 x 24
72AZ-20995R No. 2	41V, 90, 90F	18 x 24
82AZ-20995R No. 2 (Gray 211)	91A, 91AE, 91AF, 92A, 92AF	18 x 24
82BZ-20995R No. 2 (Gray 202)	91A, 91AE, 91AF, 92A, 92AF	18 x 24
2Z-20995 No. 3	50, 67	14 x 17½
22BZ-20995L No. 3	65A, 66A	14 x 17½

*Note: Second dimension in the "size" column is the side of check table adjacent to machine stand.

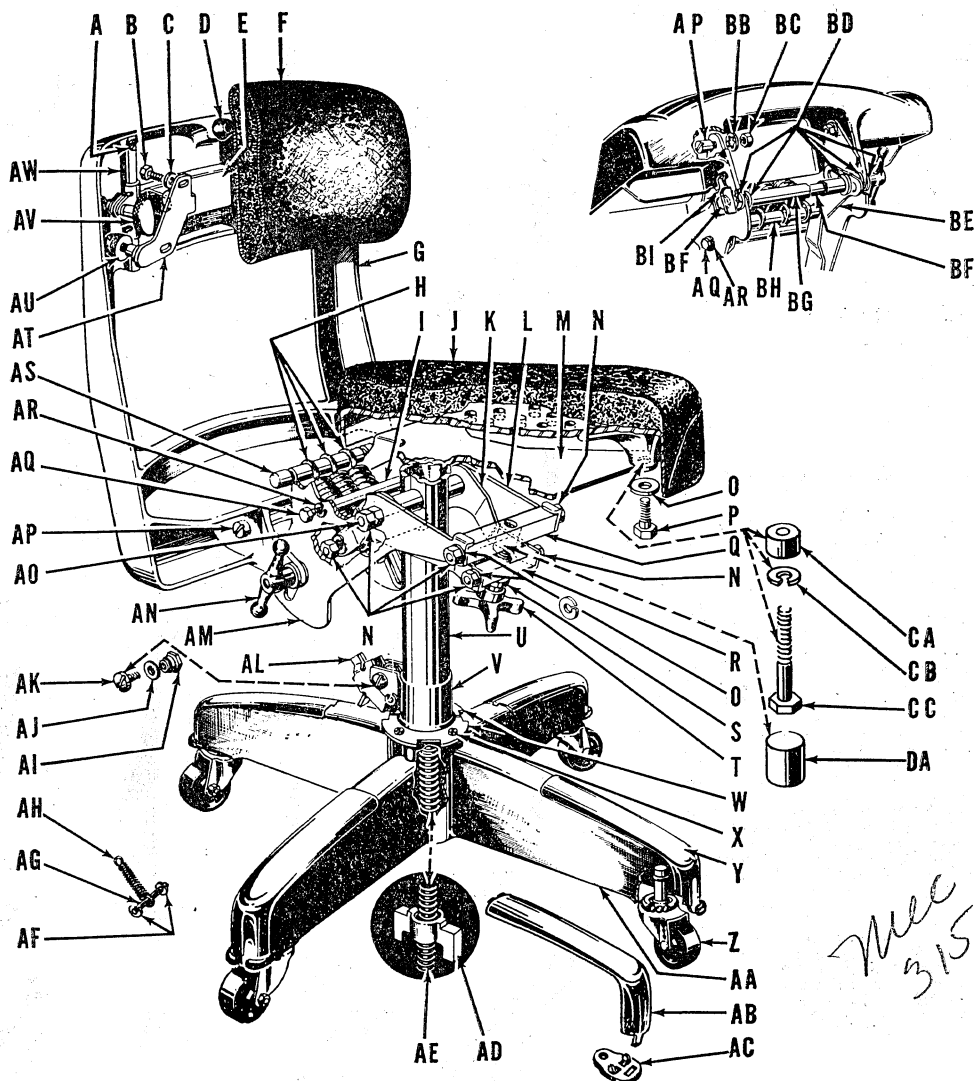
CHECK TABLE BRACKET CHART (Plate 25)

PART NUMBERS (Plate 25)

- A 393 hex. nut, 2 req.
- B 20952 screw, 2 req.
- C 1-20926 (Low) No. 1 includes A, B, for Style 31 and Style 50 stands
- D 1-20926 (High) No. 1 includes A, B, for Style 32 stands
- E 1-20926 No. 4 includes A, B, for early Style 55 stand with assembled table and drawer housing
- F 1-20926 No. 2 includes A, B, for Styles 33, 33L, 34, 35, 35L, 36, 41, 42, 43, 44 stands
- G 1-20926 1/2 No. 2 includes A, B, for Styles 33, 33L, 34, 35, 35L, 36 stands with check table 14 x 17 1/2
- H 20926 1/4 No. 1 for Style 31 stand with right check table below top of side frame
- I 1-20926 1/2 No. 3 includes A, B, for Style 33, 33L, 35, 35L stands with check table 14 x 17 1/2 below top of side frame
- J 1-20926 No. 7 use A, B, for Style 67 stand
- K 1-20926 No. 9 use A, B, for Style 67 stand with check table 2" above standard
- L 1-20926B No. 3 includes A, B, for Style 31, 32 stand with check table 4" above standard
- M 1-20926 1/4 No. 2 includes A, B, for Style 31, 32 stand with check table raised and moved forward for Class 4 machines
- N 1-20926 No. 6 use A, B, for Style 33, 34, 35, 36 stand with check table raised 3 1/2" above standard and moved forward to clear carriage on Class 1 and 2 machines
- O 1-20926 1/2 No. 4 includes A, B, for Style 33, 34 stand having check table raised and moved forward for Class 1 and 2 machines
- P 20926 1/2 No. 5 use A, B, for Style 33, 34 stand with check table raised and moved forward for clearance with 24" carriage on Class 1 and 2 machines
- Q 11-20926 No. 6 use A, B, for Style 42H9, 42H13 and 44H stand with check table right side
- R 11-20926 1/2 No. 4 use A, B, for Style 41V and 90 stands for Series V machines
- S 20926 No. 11 (gray 211) use A, B, for Style 91A, 91AF, 92A and 92AF stand for Series F machines
- T 20926A No. 11 (gray 202) use A, B, for Style 91A, 91AF, 92A and 92AF stand for Series F machines
- T 20926 No. 12 use A, B, for Style 93 stand for Series P 600



BURROUGHS CHAIR STYLE 1 (Plate 26)

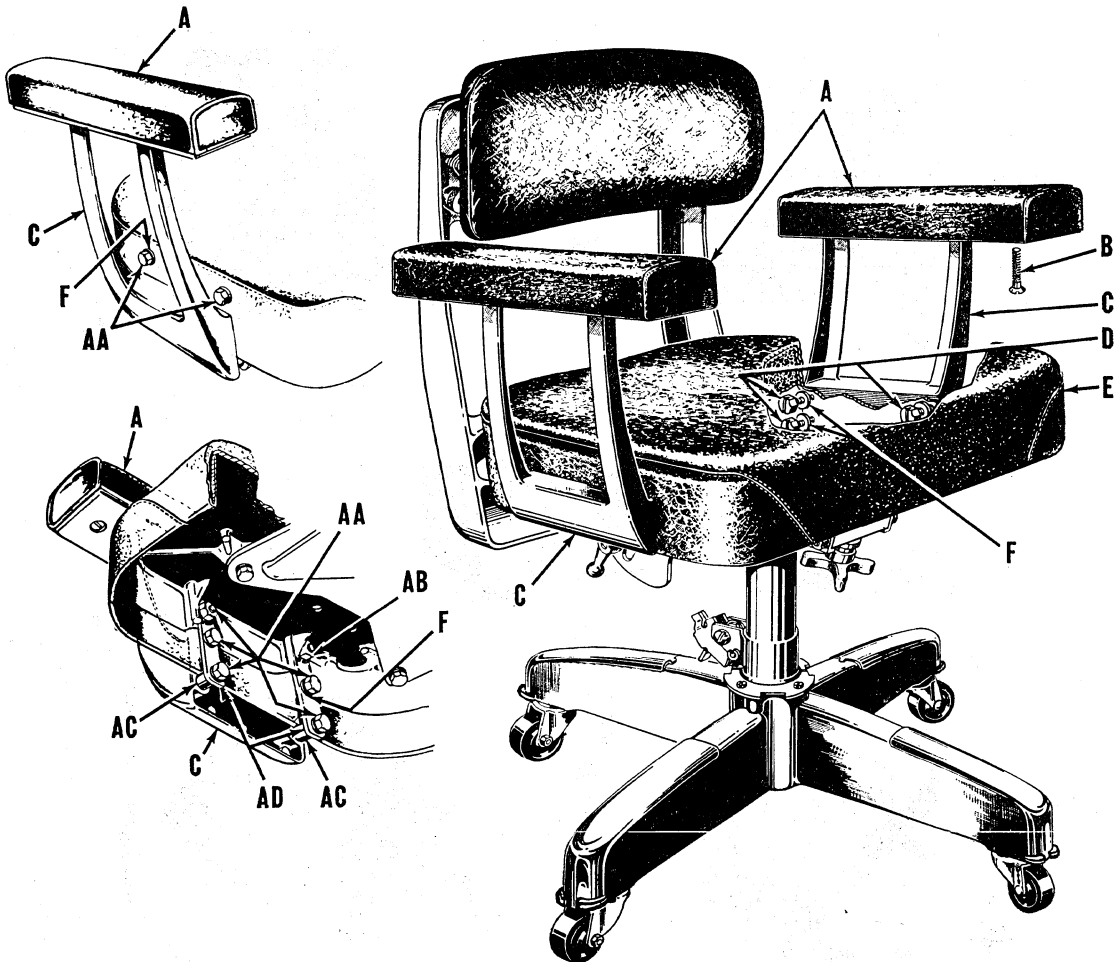


PART NUMBERS (Plate 26)

A	900555 self-tapping screw, 5 req.	W	21410 base cover plate, 2 req.	AQ	X60-73 hex. head screw, 2 req.
B	21453 hex. head screw, 4 req., included in F	X	900555 self-tapping screw, 4 req.	AR	709147 lockwasher, 2 req.
C	83208 washer, 4 req., included in F	Y	21420A scuff plates, 4 req., included in AB	AS	21403 spring anchor shaft
D	21499 1/2" A rubber bumper, 3 req.	Z	1-21497A complete caster, 4 req., includes Z	AT	1-21414R pivot bracket, right, included in F
E	1-21423 back rest support, includes AV, AVV	AA	1-21465 complete base, includes Y, 21431 lower oilite bearing and 21438 upper oilite bearing		1-21414L pivot bracket, left, included in F
F	3-21415 back rest assembly, complete, includes B, C, AT	AB	21420 scuff plates, 4 req., use with old style base and AC	AU	21457 knurled screw, 2 req.
G	21468 back rest frame	AC	21420 1/2" Z auxiliary scuff plate, use with AB only, 4 req.	AV	21450 knurled screw, 21429 washer, 21435 nut, 2 ea. req.
H	21480 expansion spring, 3 req.	AD	21439 winged nut	AW	21406 back rest support shaft, 2 req.
I	21407 pivot shaft	AE	21409 threaded shaft, included in V	BB	1097 1/8 lockwasher, 2 req.
J	1-21466 complete seat	AF	21 No. 22 clip, 2 req.	BC	199 Style 9 hex. nut, 2 req.
K	21412L spring tension adjusting arm	AG	21408 spring anchor shaft	BD	21428 space washer, 5 req.
L	21412R spring tension adjusting arm	AH	704801 spring for latch AL	BE	21422 tilting adjustment arm, 2 req.
M	Seat support, included in U, welded to tube	AI	21433 shoulder nut	BF	21452 hex. head cap bolt
N	393 hex. nut, 6 req.	AJ	200204 space washer, 2 req.	BG	21491 sleeve
O	1097 1/8 lockwasher, 10 req.	AK	21460 screw, 2 req.	BH	21402 spring anchor shaft
P	21454 hex. head cap screw, 4 req.	AL	21419 lock latch	BI	21429 1/2" A formed washer
Q	21405 square tie shaft	AM	21411R No. 1 supporting blank for spring back	CA	71396 space collar
R	21404 rectangular tie shaft	AN	21467 1/2" wing nut	CB	1097 1/8 lockwasher
S	21434 countersunk washer	AO	21401 pivot shaft	CC	21454Z hex. head cap screw
T	1-21451 finger grip adjusting screw	AP	21463 pivot screw, 199 Style 9 nut, 1097 1/8 lockwasher, 2 ea. req.	DA	21442 steel plug, to convert chairs to a stationary, non-tilting back
U	1-21490 steel tubing				
V	1-21492 large steel tubing, includes AE				

*Note: It is important that space washers BD are properly located, as shown above.

BURROUGHS CHAIR STYLE 2 (Plate 27)

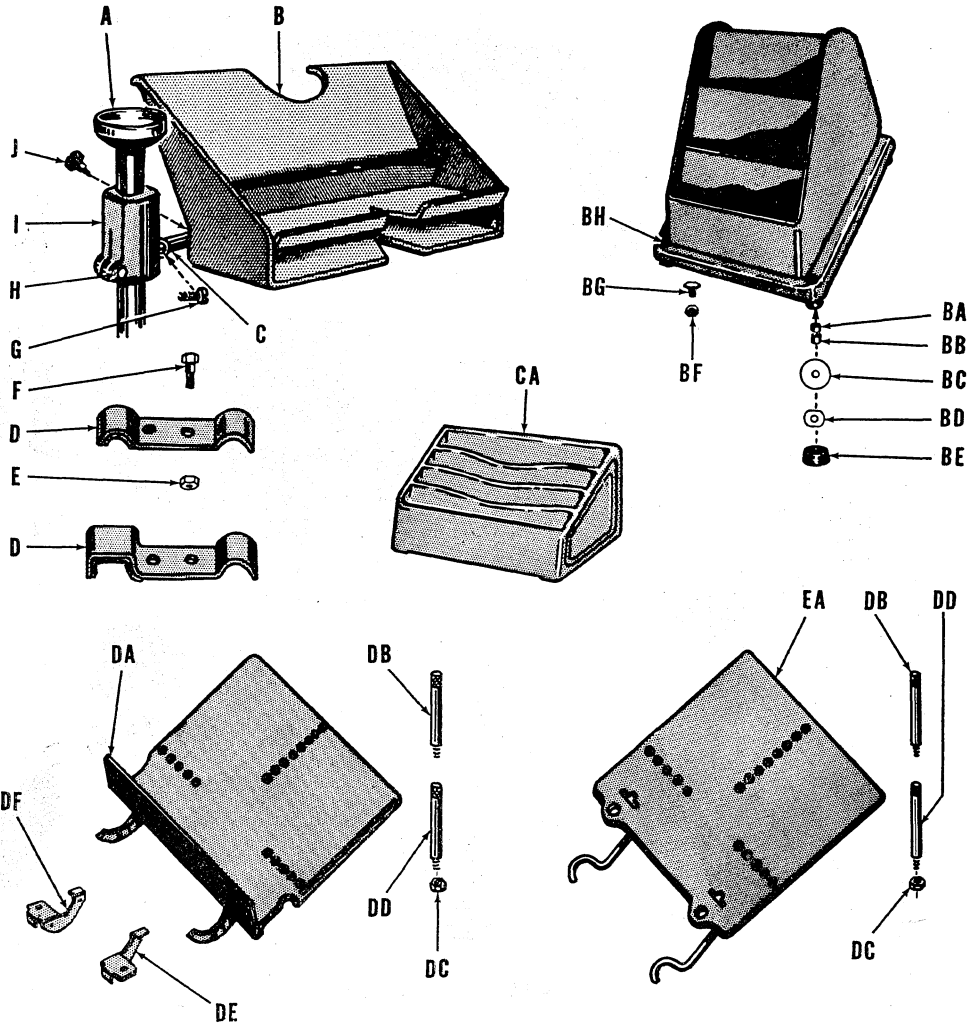


PART NUMBERS (Plate 27)

Parts not lettered are the same as those illustrated on Plate 26.

- A 1-21496 arm rest cushion, 2 req.
 - B 21461 flat head screw, 6 req.
 - C 21467 arm rest support, 2 req.
 - D 21454 hex. head cap screw, 8 req.
 - E 11-21466 complete chair seat
 - F 1097 1/16 ckwasher, 8 req.
- Note: Parts listed below, necessary for lowering the arm rests 1 1/4" on Style 2 chairs, may be obtained under part number 1-21425.
- AA 21454 No. 2 hex. head cap screw, 12 req.
 - AB 49 3/4 hex. nut, 4 req.
 - AC 354 Fte. 203 space collar, 4 req.
 - AD 21425 anchor plate, 4 req.

FORM HOLDERS AND TABLES (Plate 28)

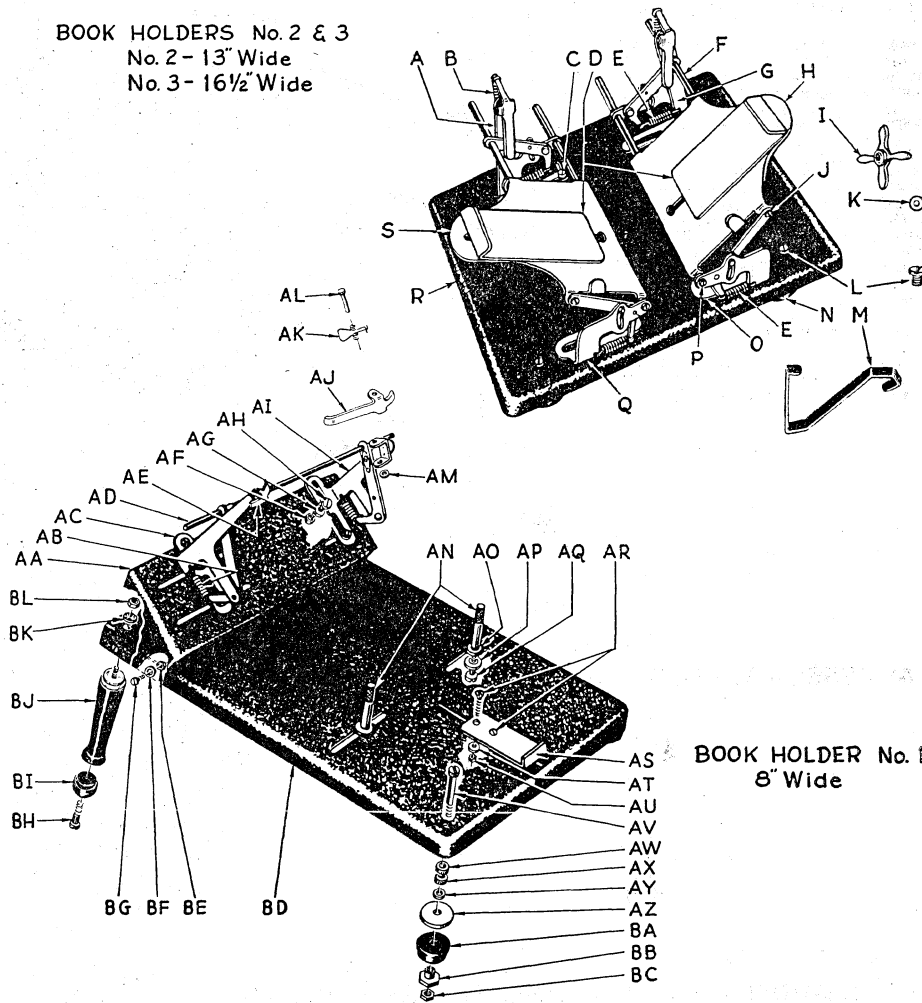


PART NUMBERS (Plate 28)

- | | | | | |
|---|---|---|--|---|
| A | 1-28900 sponge cup assembly (black) | C | 28051A Style K shaft (black ripple) | 28668B casting, included in C (gray 211) |
| | 1A-28900 sponge cup assembly (gray ripple) | | 28051B Style K shaft (gray ripple) | |
| | 1B-28900 sponge cup assembly (gray 202) | | 28051C shaft (gray 202) | 28668C casting, included in C (gray 202) |
| B | 1-28220A Style K form holder (black ripple) | | 1-28051A Style K shaft assembly, includes G, H, I (black ripple) | J 28555 knurled thumb screw, 2 req. included in B |
| | 1A-28220A Style K form holder (gray ripple) | | 1-28051B Style K shaft assembly, includes G, H, I (gray ripple) | BA 89312A Style 10 space collar, 4 req. |
| | 1B-28220A form holder (gray 202) | | 1-28051C shaft assembly, includes G, H, I (gray 202) | BB 89305A space collar, 4 req. |
| | 1Z-28220A Style K form holder, complete for 18" bills; for field installation on round tube stands (black ripple) | D | 28218 bracket for round tube stands, 2 req. (black) | BC 28242 space washer, 4 req. |
| | 11AZ-28220A (18) form holder, complete, for 18" bills; for field installation on square tube stands (gray ripple) | | 1-28218 No. 2 bracket for square tube stands, 2 req. (furniture green) | BD 84206 washer, 4 req. |
| | 11BZ-28220A (18) form holder, complete, for 18" bills; for field installation on square tube stands (gray ripple) | | 1-28218A No. 2 bracket for square tube stands, 2 req. (gray ripple) | BE 93½ No. 1 rubber foot, 4 req. |
| | 11BZ-28220A form holder, complete, for 18" bills; for field installation on square tube stands (gray 202) | | 1-28218B No. 2 bracket for square tube stands, 2 req. (gray 202) | BF 47½ hex. nut, 4 req. |
| | 21BZ-28220A form holder, complete, for 18" bills; for field installation for Style 91A and 92A round tube stands (gray 202) | | 1-28218 No. 3 bracket for round tube stands, 2 req. (gray 211) | BG 69554 hex. head screw, 4 req. |
| | | E | 1-28218A No. 3 bracket for round tube stands, 2 req. (gray 202) | BH 1055½ Style H screw, 4 req. |
| | | F | 20747 hex. nut, 2 req. | CA 28665 form holder (used with commercial tellers machines) (gray 211) |
| | | G | 28551 hex. head screw, 2 req. | DA 1-73108 No. 2 form table for square tube stands (gray 211) |
| | | H | 83562 set screw, included in C | DB 73013 No. 2 knurled top, extension post, 3 req. |
| | | I | 203597 hex. head screw, included in C | DC 47½ hex. nut, 3 req. |
| | | | 28668A casting, included in C (furniture green) | DD 73013 No. 1 knurled and threaded post, 3 req. |
| | | | | DE 1-73108 L bracket (gray 211) |
| | | | | DF 1-73108 R bracket (gray 211) |
| | | | | EA 1-73108 form table for round tube stands (black) |

METER READING BOOK HOLDERS NOS. 1, 2 AND 3 (Plate 29)

BOOK HOLDERS No. 2 & 3
No. 2 - 13" Wide
No. 3 - 16½" Wide



BOOK HOLDER No. 1
8" Wide

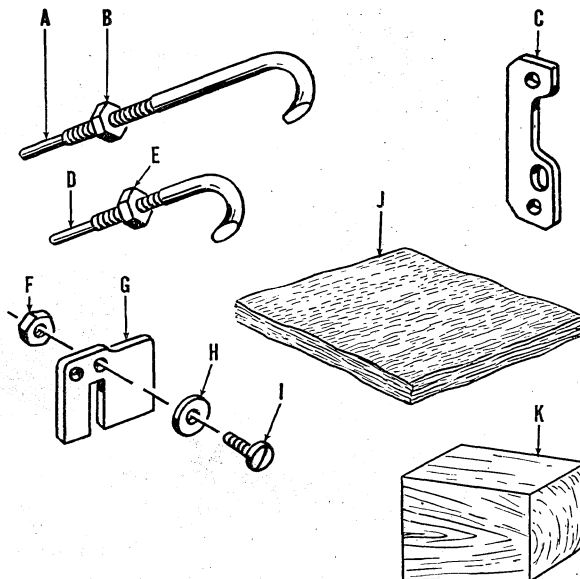
PART NUMBERS (Plate 29)

- | | | | | |
|---|----|--|----|---------------------------------------|
| 1A-28200 No. 1 (8") complete Meter Reading Book Holder No. 1. Complete Meter Reading Book Holders No. 2 and No. 3 not available, only component parts will be furnished | N | 93¼ No. 1 rubber foot, use 28229 washer, 1054½ screw, 4 ea. req. | AK | 28811 spring, included in AI |
| A 1-28201AL No. 3 bracket on holder No. 2 | O | 1-28201R No. 2 bracket on holder No. 2 | AL | 28553 No. 2 pin, included in AI |
| 1-28201AL No. 5 bracket on holder No. 3 | P | 1-28201R No. 4 bracket on holder No. 3 | AM | 3628 washer, included in AI |
| B 16880 spring, 2 req. | Q | 4456½ screw, 2 req. | AN | 28550 knurled post, 2 req. |
| C 72617 screw, use 3820½ washer, 47 nut | R | 1-28201L No. 2 bracket on holder No. 2 | AO | 3820½ washer, 2 req. |
| D 1-28223 adjustable limit, 2 req. | S | 1-28201L No. 4 bracket on holder No. 3 | AP | 3820½ washer, 2 req. |
| E 28810 spring, 4 req. | AA | 28200 No. 2 (13") base (Book Holder No. 2) | AQ | 72617 screw, 2 req. |
| F 28052 No. 1 (8½") shaft on holder No. 2, 4 req. | AC | 28200 No. 3 (16½") base (Book Holder No. 3) | AR | 2859¼ screw, 2 req. |
| 28052 No. 2 (10½") shaft on holder No. 3, 4 req. | AD | 28233L support for book | AS | 28203 No. 2 limit |
| G 1-28201AR No. 3 bracket on holder No. 2 | AE | 28204 support for brackets (Book Holder No. 1) | AT | 2820½ washer, 2 req. |
| 1-28201AR No. 5 bracket on holder No. 3 | AF | 28810 spring, 2 req. | AU | 46 hex. nut, 2 req. |
| H 28233R support for book | AG | 1-28201AL No. 1 bracket, includes AE | AV | 1055½ Style H screw, 2 req. |
| I 1-28228 double wing nut for adjustable limit, 2 req. | AH | 28050 Style 8 shaft (8" long) | AW | 89305A space collar, 2 req. |
| J 4456½ screw, 2 req. | AI | 28205 No. 4 pawl, included in AC | AX | 89305A space collar, 2 req. |
| K 3628 washer | AJ | 3820½ washer, 4 req. | AY | 89312A Style 10 washer, 2 req. |
| L 1054½ screw, 4 req. | AK | 72617 screw, 4 req. | AZ | 28242 washer, 2 req. |
| M 28224 support for base | AL | 1-28201AR No. 1 bracket, includes AJ, AK, AL, AM | BA | 93¼ No. 1 rubber foot, 2 req. |
| | AM | 28205 No. 4 pawl, included in AI | BB | 84306A hex. head shoulder nut, 2 req. |
| | AN | | BC | 45¼ hex. nut, 2 req. |
| | AO | | BD | 28200 No. 1 base |
| | AP | | BE | 47 hex. nut, 4 req. |
| | AQ | | BF | 3820½ washer, 4 req. |
| | AR | | BG | 83512A screw, 4 req. |
| | AS | | BH | 84597 screw, 2 req. |
| | AT | | BI | 1-28241 rubber foot, 2 req. |
| | AU | | BJ | 28554 leg, 2 req. |
| | AV | | BK | 1097 ¼ lockwasher, 2 req. |
| | AW | | BL | 45 hex. nut, 2 req. |
| | AX | | | |
| | AY | | | |
| | AZ | | | |
| | BA | | | |
| | BB | | | |
| | BC | | | |
| | BD | | | |
| | BE | | | |
| | BF | | | |
| | BG | | | |
| | BH | | | |
| | BI | | | |
| | BJ | | | |
| | BK | | | |
| | BL | | | |

ACCESSORIES FOR PACKING SERIES H MACHINES (Plate 30)

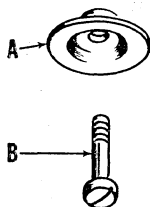
PART NUMBERS (Plate 30)

- A 30657 No. 2 hook for holding (18') carriage, 2 req.
- B 45 hex. nut, 2 req.
- C 30629 $\frac{3}{4}$ " A hook anchor end plate for carriage race way
- D 30657 No. 1 hook for holding (12') carriage, 2 req.
- E 45 hex. nut, 2 req.
- F 46 hex. nut, Class 20 thru 30 only
- G 30629 $\frac{3}{4}$ " slotted plate to hold ege. opening slide, Class 20 thru 30 only
- H 72167 $\frac{1}{2}$ " washer, Class 20 thru 30 only
- I 4456 $\frac{1}{2}$ " screw, Class 20 thru 30 only
- J Kimpack, 2x2 Class 1, 2, 6, 11 thru 16 and 20 thru 30 machines with motor return carriage
- K 30614 $\frac{3}{4}$ " A No. 2 wood block, used to protect M.R.C. adjustments (located between motor and M.R.C. bottle)—use Kimpack to protect paint from getting marred during transit. Class 1, 2, 6, 11 thru 16 and 20 thru 30 with M.R.C.



ACCESSORIES FOR PACKING SERIES J MACHINES (Plate 31)

PART NUMBERS (Plate 31)



- A 30018 $\frac{1}{2}$ " No. 2 metal cup to anchor grommet type feet
- B X60-52 screw

ACCESSORIES FOR PACKING SERIES P MACHINES (Plate 32)

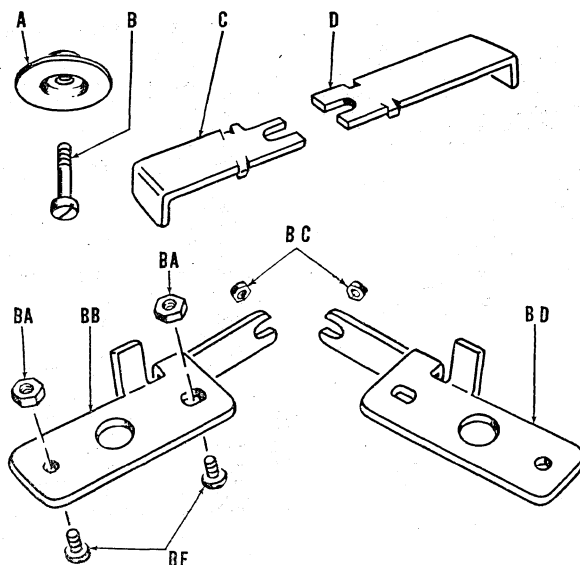
PART NUMBERS (Plate 32)

Series "P" 200

- A 30018 $\frac{1}{2}$ " No. 2 metal cup, 4 req., to anchor grommet type rubber feet
- B 255 $\frac{1}{8}$ " screw, 4 req.
- C 30018 $\frac{1}{4}$ " L brace holding carriage } use screw 83512A
- 30018 $\frac{1}{4}$ " L No. 2 brace holding carriage on machines with red ribbon mechanism
- D 30018 $\frac{1}{4}$ " R brace holding carriage } use screw 83512A
- 30018 $\frac{1}{4}$ " R No. 2 brace holding carriage on machines with red ribbon mechanism

Series "P" 600

- BA 47 $\frac{1}{4}$ " hex. nut, 2 req., for screw BE
- BB 30035R support on right carriage rail end bracket to hold carriage
- BC 47 $\frac{1}{4}$ " hex. nut holding support on threaded post in ege.
- BD 30035L support on left carriage rail end bracket to hold carriage
- BE 81561 screw, 2 req., holding support on carriage rail end bracket



ACCESSORIES FOR PACKING SERIES M MACHINES (Plate 33)

PART NUMBERS (Plate 33)

Series M machines with 12", 18", 22", 30" carriage not selective column tabulation—with and without split and normal platen

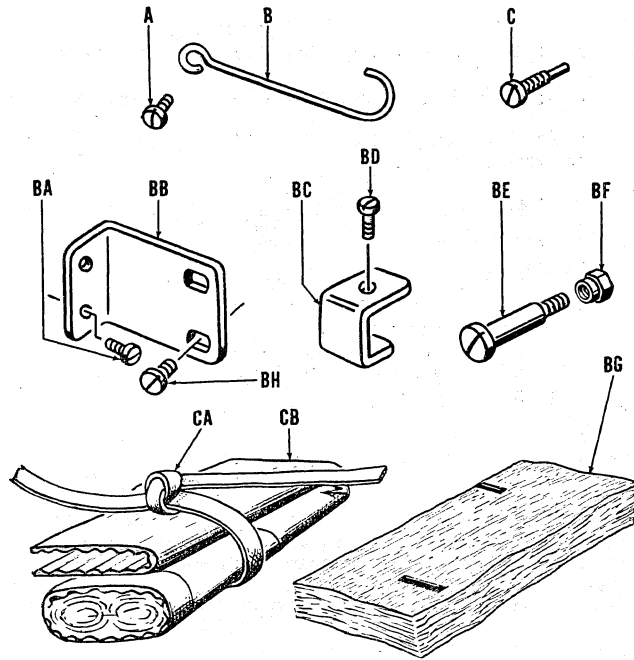
- A 510 Fte. 141 screw, holding wire hook B on outer carriage end plate, 1 req. for carriage with split and normal platen, 2 req. for carriage without split and normal platen
- B 30757 wire hook for platen shaft on carriage end plate, to prevent platen from raising, 1 req. for machines with split and normal platen, 2 req. for machines without split and normal platen
- C 30756 dowel screw to lock ege., 1 req. for 12" carriage, 2 req. for 18", 22" and 30" carriage

Series M machines with 22" and 30" carriage and with selective column tabulation

- BA 79510 screw, 6 req. holding brackets BB on typewriter legs and to carriage rail, use (4) 1097 $\frac{1}{4}$ lockwashers for screws 79510 and 71554 holding brackets to typewriter legs
- BB 30729 $\frac{1}{2}$ No. 1 bracket, 2 req. on typewriter legs and carriage rail to prevent carriage from shifting
- BC 30729 $\frac{1}{2}$ No. 2 bracket, 2 req. on rear carriage rail for round shaft
- BD 72568 screw, 2 req. for bracket BC
- BE 20960 $\frac{1}{2}$ long shoulder screw, 2 req. on inner carriage end plate to prevent shaft from raising or shifting
- BF 73380 hex. nut, 2 req. for shoulder screw BE
- BG Kimpack 2x4 placed between head of shoulder screw BE and outer carriage castings to prevent marring of paint
- BH 71554 screw, 2 req. on typewriter legs for air cushion and for bracket BB

Series M machines with 100 pinion register section

- CA 30031 Coroflex pad folded with Kimpack for right and left side of pinion assembly
- CB White cotton tape holding "Coroflex" pad in place (available locally)



BOXES AND CARTONS FOR SHIPPING DOMESTIC MACHINES (Plate 34)

DESCRIPTION	PART NUMBER
CARRIAGES	
Carriage, 30" for Series M Machines	99 No. 175 (15)
Carriage, 15", 18" for Series F Machines	99 No. 175 (18)
Carriage, 22" for Series F Machines	99 No. 175 (22)
MOTORS	
Motor Type 6, 6A, shipped separate from drive, Series H, M, V Machines	2-30000 No. 1 (MO)
Motor Type 6, 6A with drive—Series H, M, V Machines	2-30000 No. 3 (MO)
Motor Type 4—Series F Machines (does not include inside fittings)	99 No. 30
Fittings for 99 No. 30 Carton, must be ordered individually	98 $\frac{1}{2}$ No. 33
	98 $\frac{1}{2}$ No. 34
	98 $\frac{1}{2}$ No. 35
CONTROL UNIT FOR SERIES F MACHINES	
Control unit for 15" Carriage	99 No. 145A Style 15
Control unit for 18" Carriage	99 No. 145A Style 18
Control unit for 22" Carriage	99 No. 145 Style 22
SERIES C	
Style 50605 hand operated	2-30000 No. 1 (C)
Style 51005 hand operated or 51035 electric simplex	2-30000 No. 2 (C)
Style 51055 electric duplex	2-30000 No. 3 (C)
Style 51405 hand operated or 51435 electric simplex	2-30000 No. 4 (C)
Style 51455 electric duplex	2A-30000 No. 5 (C)
SERIES F	
Series F Machines with 15" Carriage, all styles	2-30000 (15) No. 1 (F)
Series F Machines with 18", 22" Carriage, all styles (ship 22" carriage separate)	2-30000 (18) No. 1 (F)

PLATE 34 (Continued)

DESCRIPTION	PART NUMBER
SERIES H	
Class 2 Style 9 Machines with 12 $\frac{1}{4}$ " Carriage hand or electric	2-30000 (12).E Style 9 No. 1 (H)
Class 2 and 6 Style 13 Machines with 12 $\frac{1}{4}$ " Carriage hand or electric	2-30000 (12) E Style 13 No. 1 (H)
Class 2 Style 17 and Class 20 thru 30 Style 13 and 17 Machines—spring construction box	2-30000 No. 2 (H)
SERIES J	
Series J Machines, all styles	2-30000 No. 1 (J)
SERIES K	
Style K101	2-30000 No. 1 (K)
Matrix Frames	99 No. 168
SERIES M	
Class 72, 78, 79, M 200 and M 800 machines, new style wide base with 12", 18" or 22" carriage, spring construction box	2-30000 No. 1 (M)
Class 77 and M 700 machines with 12", 18" or 22" carriage spring construction box	2-30000 No. 2 (M)
Class 77 and M 700 machines with Selective Column Tabulation, 22" carriage, spring construction box	2-30000 No. 3 (M)
Class 77 and M 700 machines with Selective Column Tabulation, 30" carriage, spring construction box	2-30000 No. 4 (M)
Class 7 machines with 12" carriage—narrow base	2-30000 No. 5 (M)
Class 7 machines with 18" or 22" carriage—narrow base	2-30000 No. 6 (M)
Class 7 machines with 12", 18" or 22" carriage—early style wide base	2-30000 No. 7 (M)
Class 77 machines with 12", 18" or 22" carriage—short base	2-30000 No. 8 (M)
Class 7 machines with 30" carriage—narrow base	2-30000 No. 9 (M)
Class 7 machines with 30" carriage—early style wide base	2-30000 No. 10 (M)
Class 77 machines with 30" carriage	2-30000 No. 11 (M)
Class 7 machines with Selective Column Tabulation, 22" or 30" carriage	2-30000 No. 12 (M)
SERIES P	
Class 8, 9, 10 machines with 3 $\frac{7}{8}$ " carriage	2-30000 No. 1 (P)
Class 8, 9, 10 machines with 12 $\frac{1}{4}$ " non-tabulating carriage	2-30000 No. 2 (P)
Class 9 Style 13 machines with 12 $\frac{1}{4}$ " non-tabulating carriage	2-30000 No. 3 (P)
Class 9 Style 13 machines with 12 $\frac{1}{4}$ " tabulating carriage	2-30000 No. 4 (P)
Class 8, 9, 10 machines with 12 $\frac{1}{4}$ " tabulating carriage	2-30000 No. 5 (P)
Class 8, 9, 10 machines with 3 $\frac{7}{8}$ " carriage—rewind device, with or without double ribbon or form chute extended on the left only, and for Style 1010361	2-30000 No. 6 (P)
Class 8, 10 machines with 3 $\frac{7}{8}$ " carriage, narrow cash drawer, with or without rewind device	2-30000 No. 8 (P)
Class 8, 10 machines with 3 $\frac{7}{8}$ " carriage, wide cash drawer, with or without rewind device	2-30000 No. 9 (P)
Class 8, 9, 10 machines with 6" front feed carriage, narrow cash drawer, variable limit stop or ticket receptacle	2-30000 No. 10 (P)
Class 8, 9, 10 machines with 6" front feed carriage, wide cash drawer, variable limit stop or ticket receptacle	2-30000 No. 11 (P)
Class 8, 9, 10 machines with 12 $\frac{1}{4}$ " non-tabulating carriage and narrow cash drawer	2-30000 No. 12 (P)
Class 8, 9, 10 Style 13 machines with 3 $\frac{7}{8}$ " carriage	2-30000 No. 13 (P)
Class 8, 9, 10 machines with 6" front feed carriage, rewind device, selective form limit stop and form chutes for right and left insertion	2-30000 No. 14 (P)
Series P 400 machines with 12 $\frac{1}{4}$ " carriage	2-30000 No. 15 (P)
Style P 401, P 402 machines with 3 $\frac{7}{8}$ " carriage	2-30000 No. 16 (P)
Series P 200 machines with 3 $\frac{7}{8}$ " carriage	2-30000 No. 17 (P)
Series P 200 machines with 3 $\frac{7}{8}$ " carriage and shield for radio interference suppressor	2-30000 No. 19 (P)
Series P 600 machines with 15" carriage	2-30000 No. 18 (P)
SERIES R	
Class 125 051 111	2-30000 No. 1 (R)
Class 225 051 111	2-30000 No. 2 (R)
Class 225 095 111	
Class 325 051 111	
Class 325 095 111	
Cash register without cash drawer	2-30000 No. 3 (R)
SERIES T	
Class 53, 54, 55, 63, 64 and 65 machines with 18", 22" or 26" carriage	2-30000 No. 1 (T)
Class 50 and 60 machines with continuous billing or fanfold billing	2-30000 No. 2 (T)
Class 50, 51, 52, 60, 61 and 62 machines	99 No. 65
SERIES V	
Class 3 Style 10 hand operated machines with 3 $\frac{7}{8}$ " or 12" carriage	2-30000 No. 1 (V)
Class 4, 4D, 41 hand operated machines with 3 $\frac{7}{8}$ " or 12" carriage	
Class 3 Style 10 electric machines with 3 $\frac{7}{8}$ " or 12" carriage	2-30000 (12) No. 2 (V)
Class 4, 4D, 41 electric machines with 3 $\frac{7}{8}$ " or 12" carriage	
Class 3 Style 10 electric machines with 20" carriage	2-30000 (20) No. 2 (V)
Class 4, 4D, 41 electric machines with 20" carriage	
Class 3 Style 5 hand operated machines with 3 $\frac{7}{8}$ " carriage	2-30000 No. 3 (V)
Class 3 Style 7, 9, 10 hand operated machines with 12" carriage	2-30000 No. 4 (V)