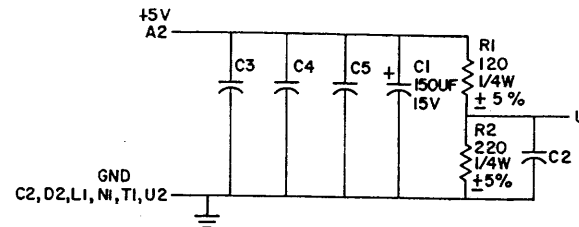
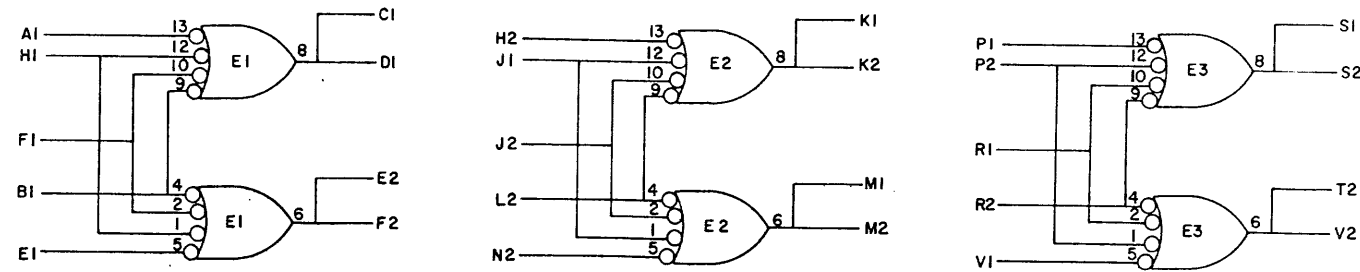
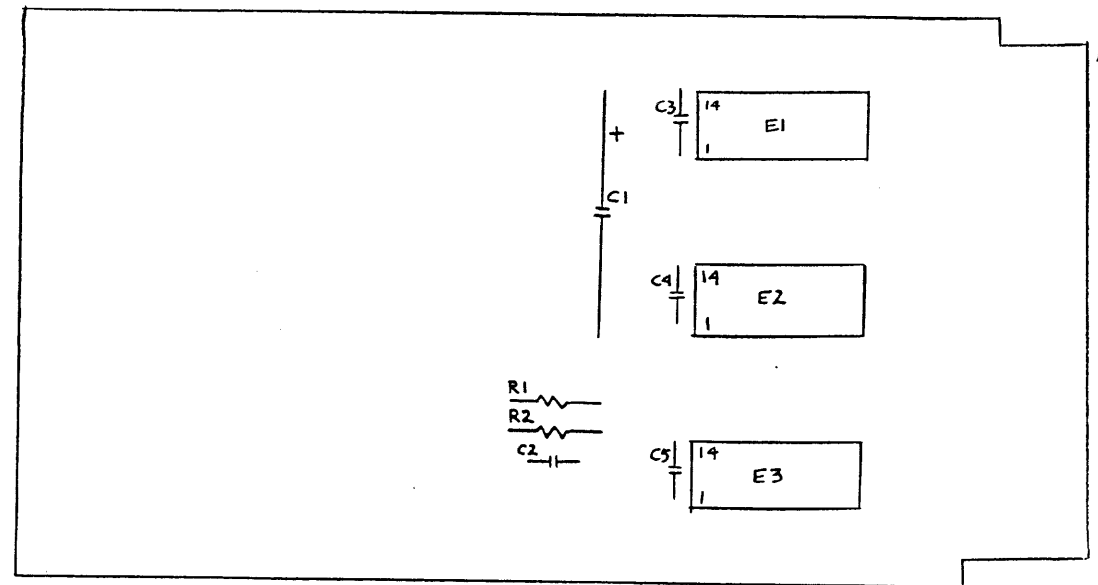


THIS SCHEMATIC IS FURNISHED ONLY FOR TEST AND MAINTENANCE PURPOSES. THE CIRCUITS ARE PROPRIETARY IN NATURE AND SHOULD BE TREATED ACCORDINGLY. COPYRIGHT 1970 BY DIGITAL EQUIPMENT CORPORATION



UNLESS OTHERWISE INDICATED:
 CAPACITORS = .01UF, 100V, ±20%
 IC'S = DEC1074H40
 PIN 7 = GND
 PIN 14 = +5V ON ALL IC'S



ITEM NO.	DEC PART NO.	DESCRIPTION	QTY.
11	9008337-06	HANDLE, FLIP CHIP - MAGENTA	1
10	9006732	EYELET #GS 4-7	2
9	1910469	I.C. DEC1074H40	3
8	1300271	RES. 220, 1/4W, 5%	1
7	1300247	RES. 120, 1/4W, 5%	1
6	1001610	CAP. .01UF, 100V, 20% DISC	4
5	1000084	CAP. 150UF, 15V, 20% S. CAP	1
4	5009289	PCB CIRCUIT BOARD	1
3	B-MH-M612-0-6	MODULE ECO HISTORY	
2	C-AH-M612-0-5	ASSY/DRIVER MODULE LAYOUT	
1	K-CO-M612-0-4	MODULE MATE HOLE LOCATION	

digital		POWER DRIVER MODULE M612	
SIZE	CODE	NUMBER	REV
C	CS	M612-0-1	B

REV	CHG NO	REV
1	00001	A
2	00002	B

DRY	DATE
J. Cooper	12/11/70
CHK'D	DATE
ENG	DATE
PROD	DATE

TRANSISTOR & DIODE CONVERSION CHART			
DEC	EIA	DEC	EIA

digital
 EQUIPMENT CORPORATION
 MAYNARD, MASSACHUSETTS

PRINTED CIRCUIT REV	B
---------------------	---

REV B
 NUMBER
 M612-0-1
 C CS