

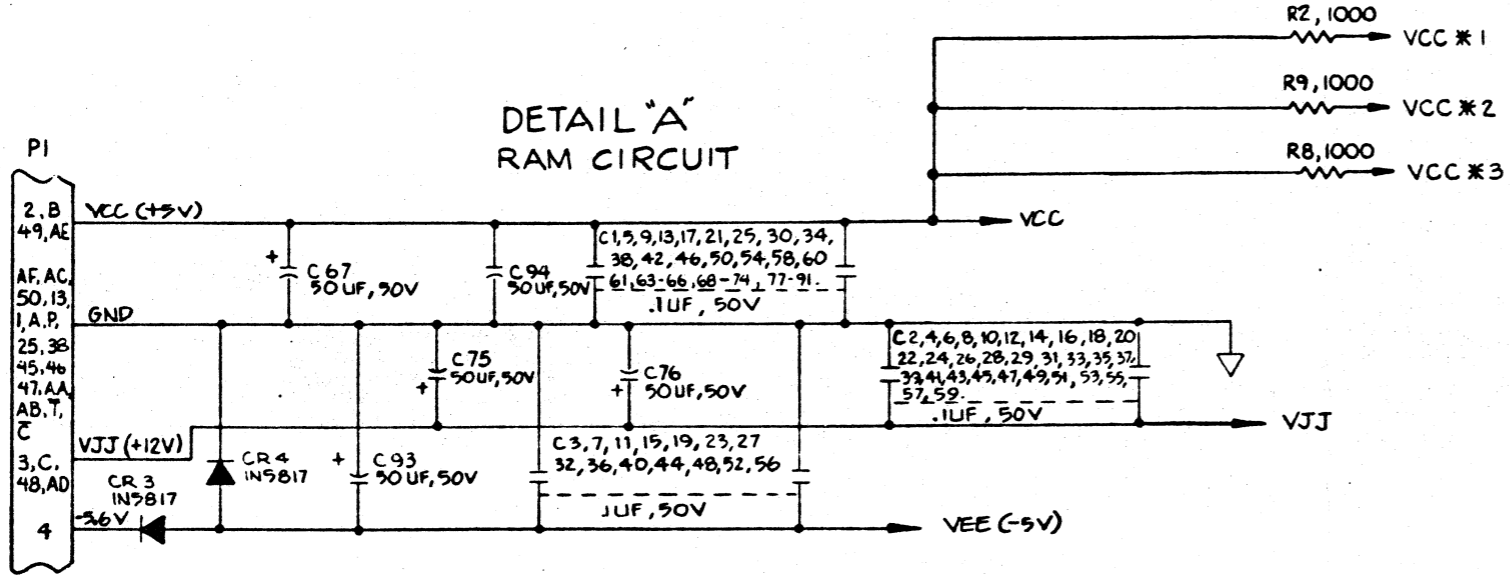
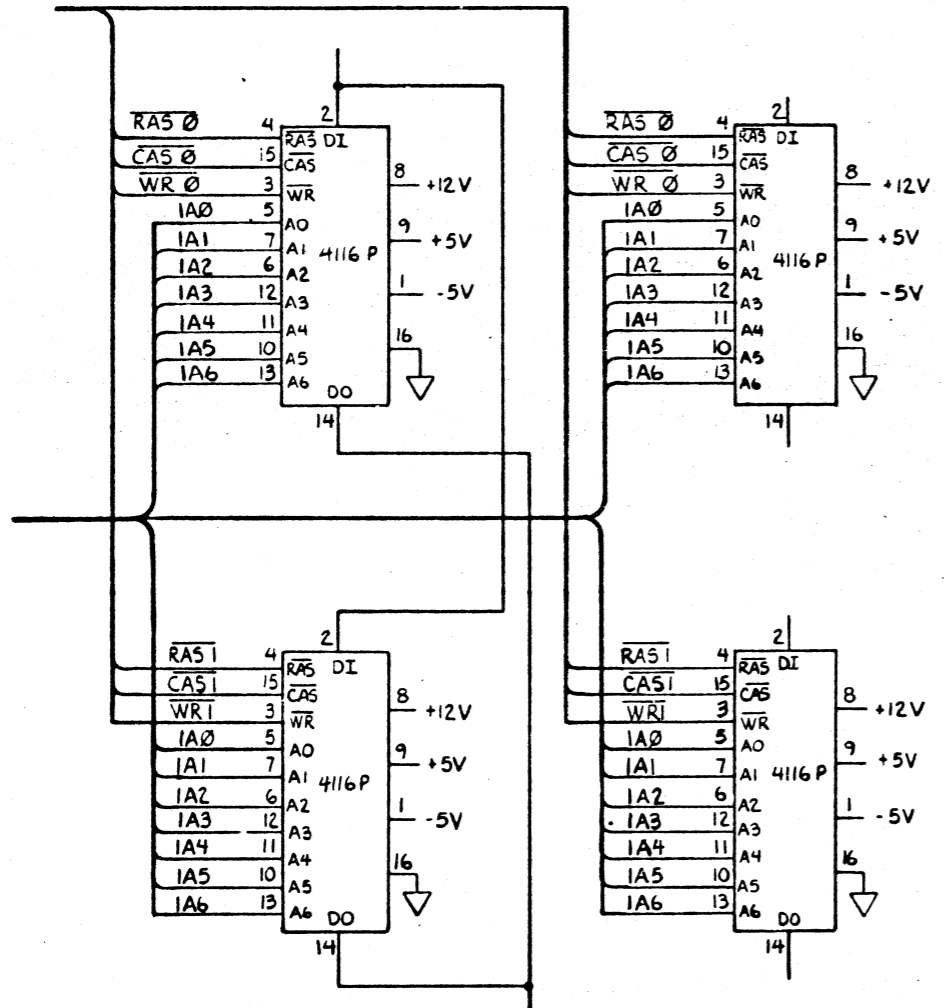
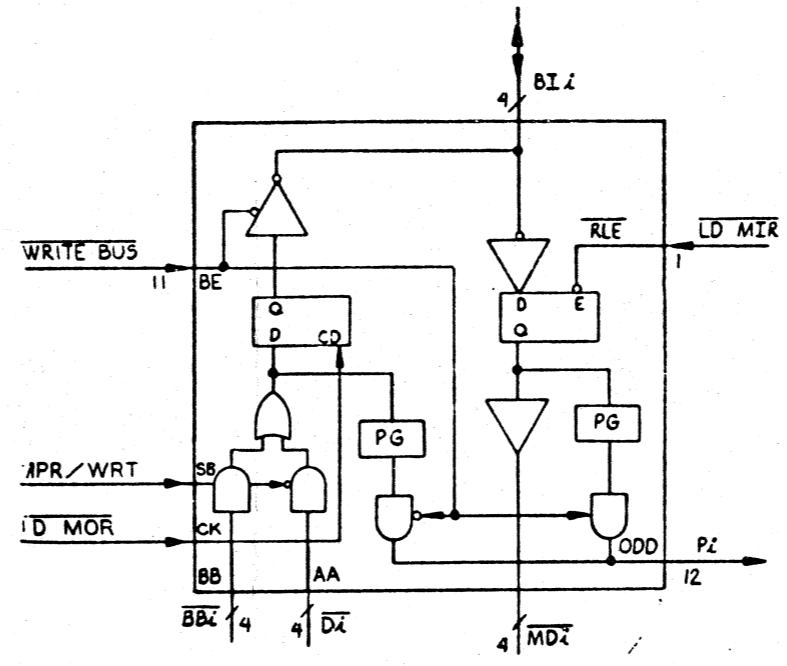
U1 THRU U120 ARE 4116'S.

TURRET LUG (9 PLACES)

STIFFENER, 2 REQ'D

DRAWN <i>Bochler</i>	DATE 9-20-79	 FOUR-PHASE SYSTEMS, INC. CUPERTINO, CALIFORNIA	
CHECKED <i>W. Sturmer</i>	ENGINEER		
MFG <i>W. Sturmer</i>	DATE 11-2-79	90042171-07	56
RELEASED <i>W. Sturmer</i>	DATE 11-2-79	SHEET 10 OF 10	REV

REVISIONS					
REV	DATE	DESCRIPTION	BY	APPROVAL	
50		REL TO PILOT PCO #4608	GK		
51		CHG PER MARKUP #4734	GK		
52		SCHEM REV CHG ONLY DUE TO L/M CHG. PCO #4738	AW		
53		ADDED NOTE #6 PCO #4751	GK		
54		REV CHG ONLY PCO #4820	GK		
55		ADDED TO NOTE 3 PCO #4875	GK		
56		SCHEM REV CHG ONLY DUE TO L/M CHG. PCO #50100	JG		

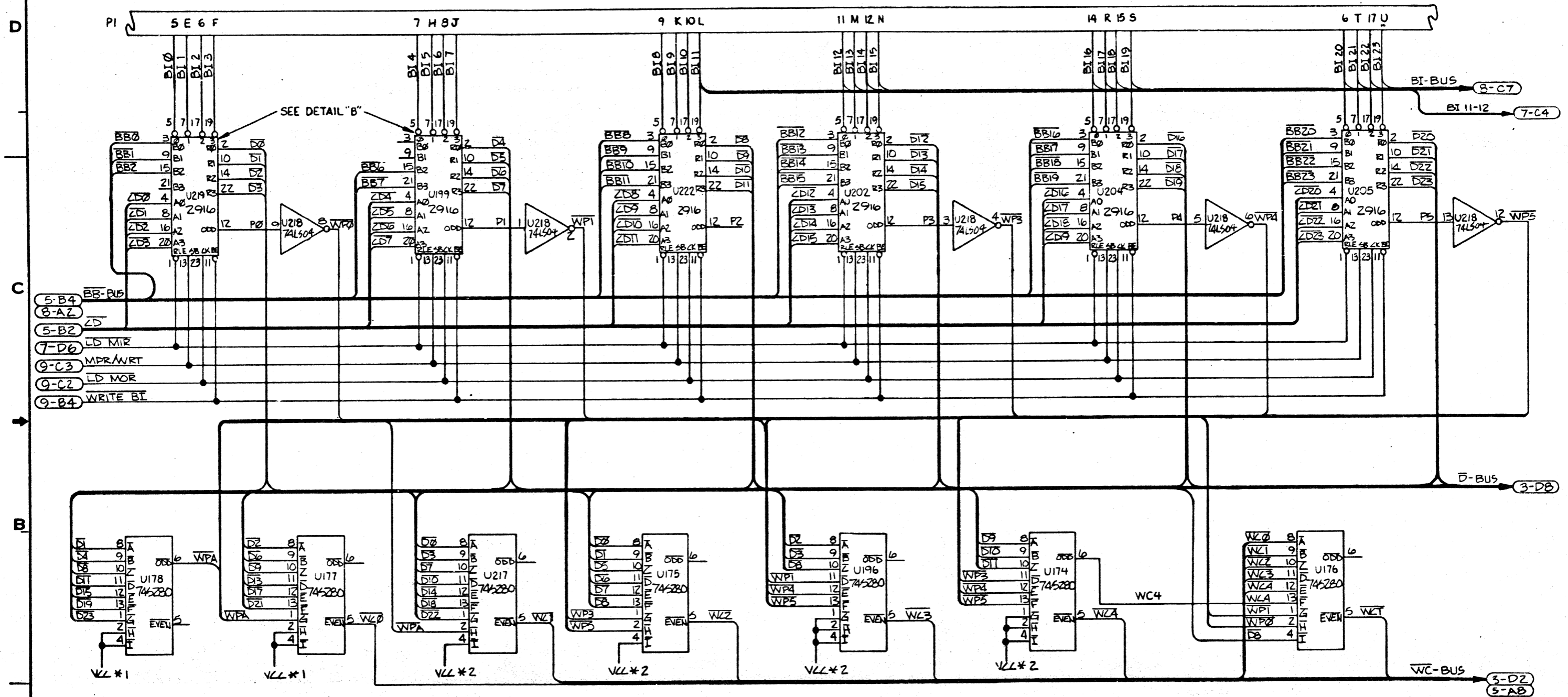


IC BIASING TABLE		
DEVICE	GND	VCC
74500		
74LS00		
7404		
74LS04		
74508		
74LS08		
74510	7	14
74LS10		
74LS11		
74532		
74LS32		
74LS38		
74574		
74LS74		
745280		
74LS393		
LDM 100		
745112		
74LS112		
745135		
*745138		
74LS138		
74LS139		
745153	8	16
74LS153		
74LS161		
74LS174		
74279		
8T96		
8T97		
AM2916	6,18	24
745240		
74LS244	10	20
74LS373		

- NOTES: UNLESS OTHERWISE SPECIFIED
- ALL RESISTOR VALUES IN OHMS, 1/4 WATT, 5%. ALL CAPACITORS ARE 50V.
 - X-YZ SYMBOL INDICATES A CONNECTION ON SHEET (X), ZONE (YZ).
 - U160, U162, U163 REQUIRED MIN. 3.2 VOH. USE P/N 52020901, AND 52021781.(REF. SH. 10)
 - (REF. SH. 7) FOR TEST PURPOSES. ERROR CORRECTION MAY BE MANUALLY DISABLED BY OPENING JUMPER A-C, OR ENABLED BY JUMPER POINT "C" TO GROUND "6".
 - (REF. SH. 7) FOR TEST PURPOSES. REFRESH MAY BE MANUALLY BLOCKED BY MOVING JUMPER TO "6" FROM "B". OPENING THE JUMPER ASSURES REFRESH TO TAKE PLACE.
 - WHEN USED WITH DRAM 90042171 THE MEMORY MAPPER MUST HAVE OPTION "A" JUMPED. THIS PROVIDES DRAM I.D. IN THE MEMORY MAPPER PARITY REG.

ITEM NO.	QTY	PART NUMBER	REF DES	DESCRIPTION
EXTERNAL				
DATE: 9/26/76				
E DELA				
DATE: 10-79				
J LYBERG				
DATE: 1-31-77				
GK				
UNLESS OTHERWISE SPECIFIED ALL DIMENSIONS IN INCHES TOLERANCES				
DECIMAL	FRAC	ANGULAR	DATE	RELEASED
XXX	XXX	XXX	10/79	JG
D 90042171-07				56
SHEET 1				OF 10

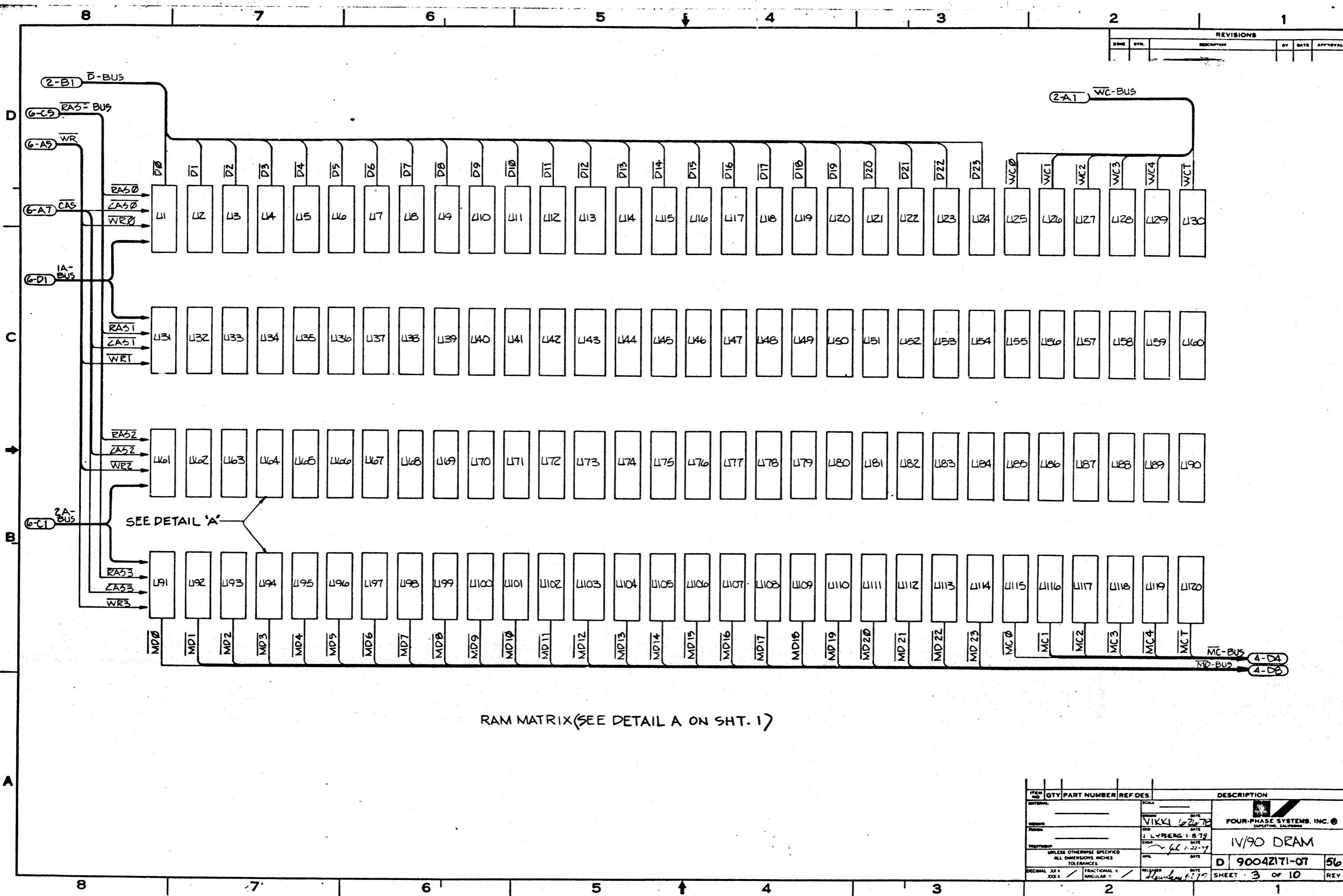
REVISIONS				
REV	BY	DESCRIPTION	DATE	APPROVAL



ITEM NO.	QTY	PART NUMBER	REF. DES.	DESCRIPTION

UNLESS OTHERWISE SPECIFIED ALL DIMENSIONS IN INCHES TOLERANCES: DECIMAL: .005 FRACTIONAL: 1/16 ANGULAR: .5°	VIKKI J. LYBENC 11-22-77	DATE: 10/26/78 DATE: 11-22-77 DATE: 11-22-77	FOUR-PHASE SYSTEMS, INC. CHESBROUGH, CA 94508 N/90 DRAM D 90042171-07 56 SHEET 2 OF 10 REV
--	--------------------------------	--	--

REVISIONS				
NO.	BY	DESCRIPTION	DATE	APPROVAL

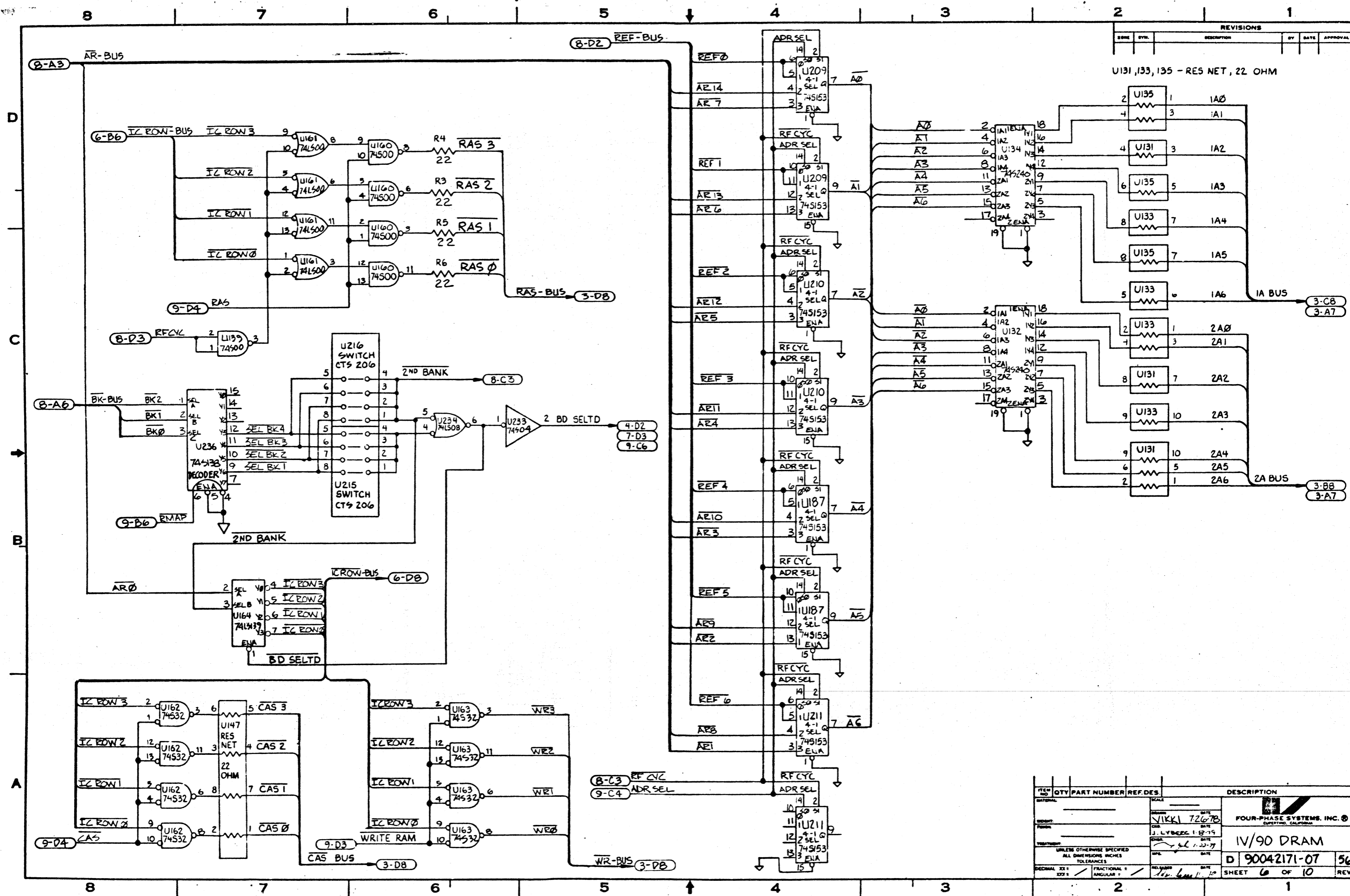


RAM MATRIX (SEE DETAIL A ON SHT. 1)

ITEM NO.	QTY	PART NUMBER	REF DES.	DESCRIPTION

DESIGNER: VIKKI DATE: 6-20-78 CHECKED: J. LYRENG DATE: 1-8-79 RELEASED: H. HENDERSON DATE: 1-22-79	FOUR-PHASE SYSTEMS, INC. OAKLAND, CALIFORNIA IV/90 DRAM D 90042171-07
UNLESS OTHERWISE SPECIFIED ALL DIMENSIONS IN INCHES TOLERANCES: DECIMAL XX ± .002 FRACTIONAL X ± .005 ANGULAR ± .5°	56 SHEET 3 OF 10 REV.

REVISIONS				
REV.	BY	DATE	DESCRIPTION	APPROVAL

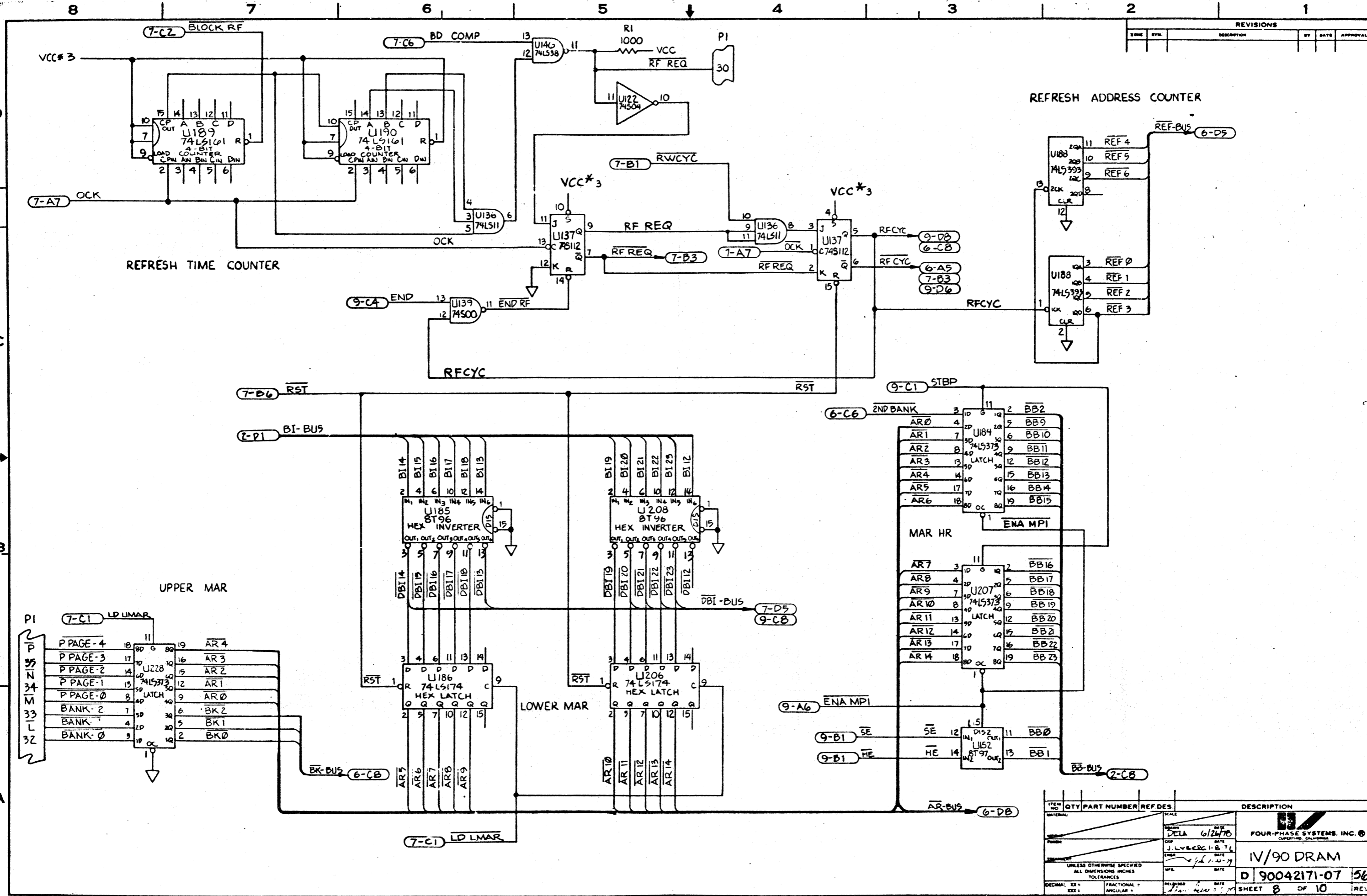


U131, 133, 135 - RES NET, 22 OHM

REV. NO.	QTY	PART NUMBER	REF. DES.	DESCRIPTION

NATIONAL VIKKI 72678 J. LYBEE 1-18-79 1-22-79	SCALE DATE DATE DATE	FOUR-PHASE SYSTEMS, INC. © QUARTER, CALIFORNIA IV/90 DRAM D 90042171-07 56 SHEET 6 OF 10 REV.
---	-------------------------------	---

REVISIONS				
REV	BY	DESCRIPTION	DATE	APPROVAL



ITEM NO.	QTY	PART NUMBER	REF DES	DESCRIPTION

DATE: 6/24/78	SCALE: 1:1	
DESIGNED BY: J. LYBEE	DATE: 1-8-76	
DATE: 1-22-77		IV/90 DRAM
		D 90042171-07 56
		SHEET 8 OF 10

