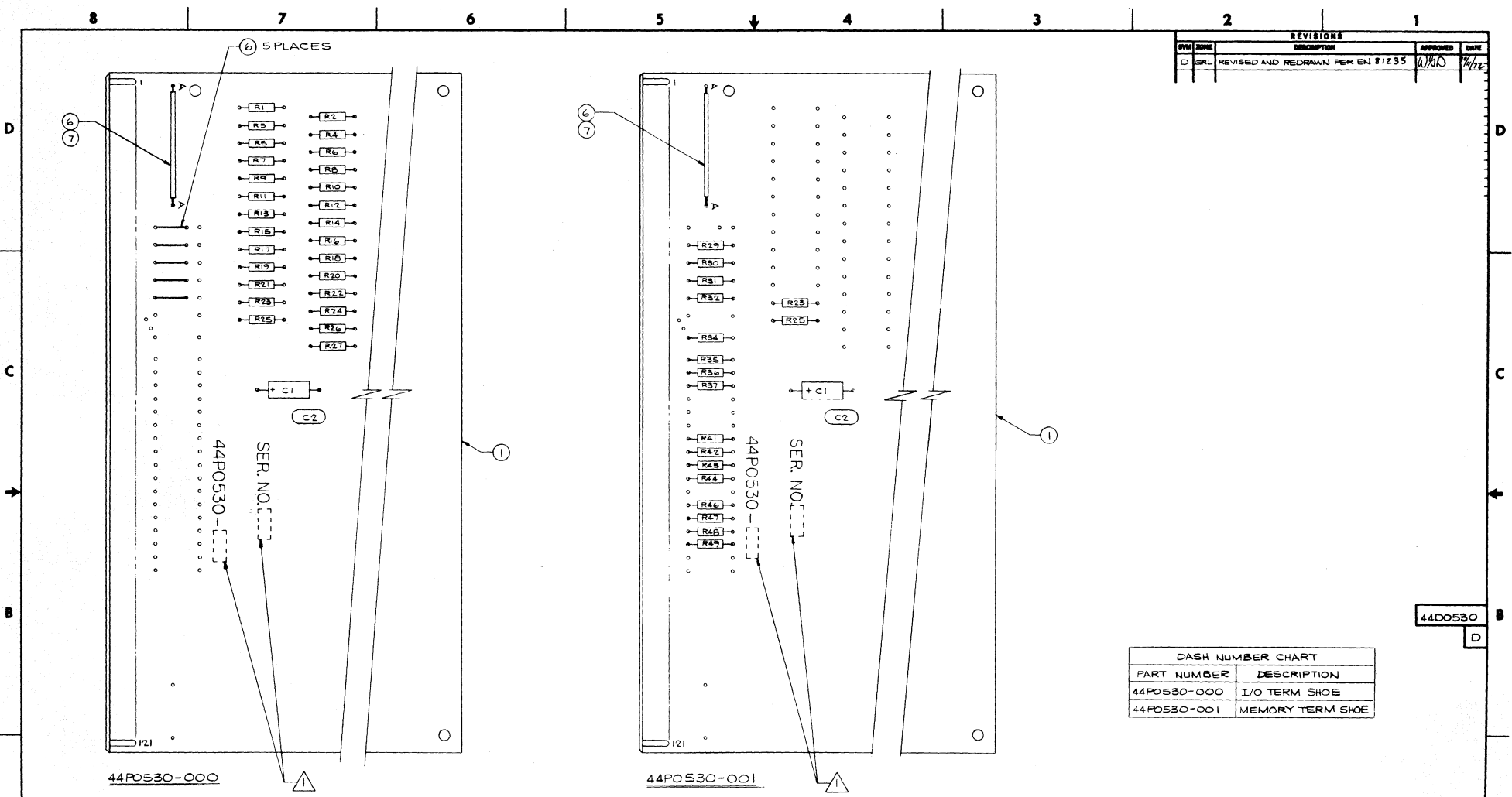


REVISIONS				
OWN	DATE	DESCRIPTION	APPROVED	DATE
D	GRL	REVISED AND REDRAWN PER EN 81235	WBD	7/72



44DO530
D

DASH NUMBER CHART	
PART NUMBER	DESCRIPTION
44PO530-000	I/O TERM SHOE
44PO530-001	MEMORY TERM SHOE

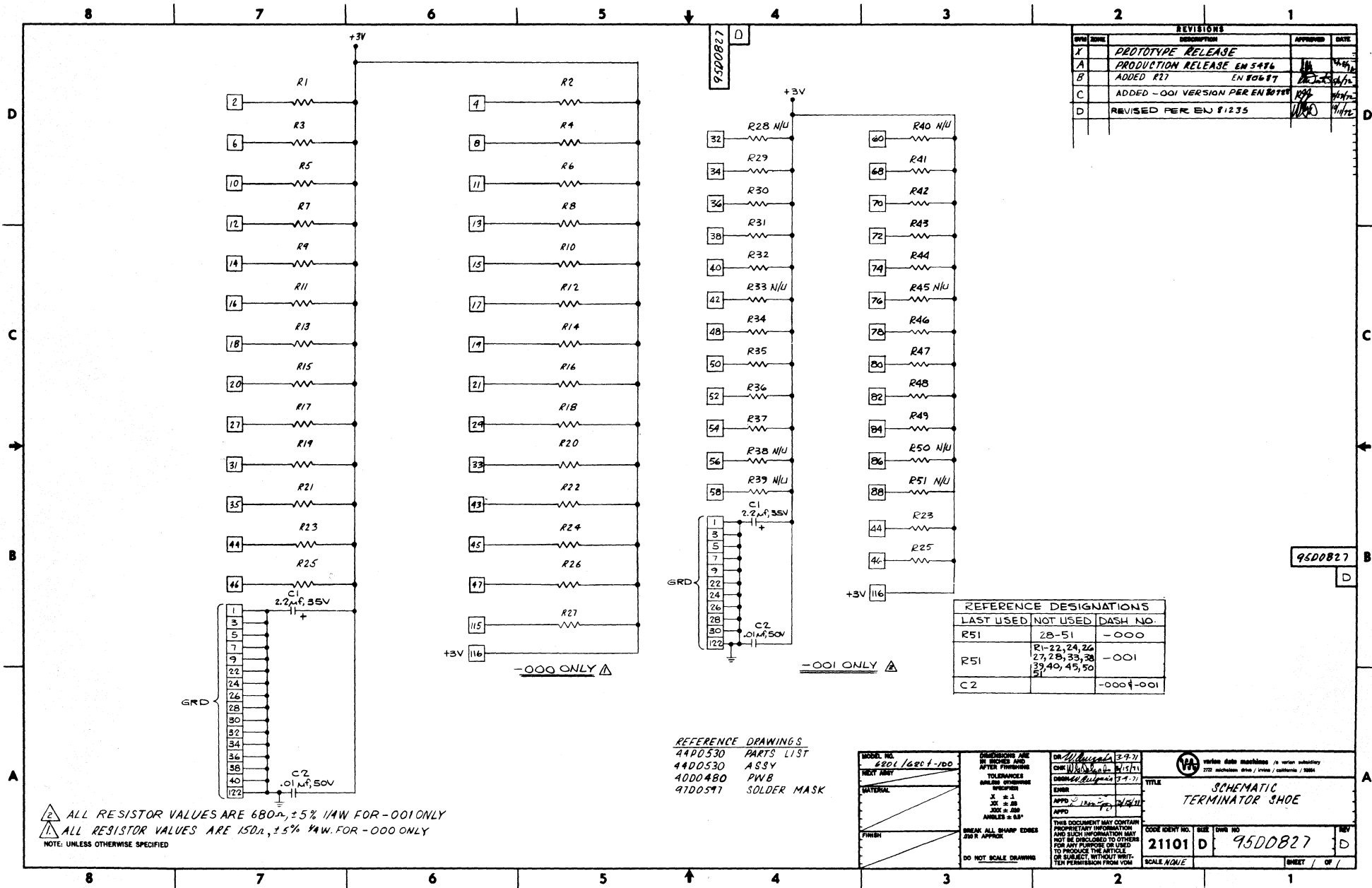
FOR PARTS LIST SEE 44PO530

1 MARK APPROPRIATE DASH NUMBER AND THE REVISION LETTER OF THE PARTS LIST TO WHICH THE PART WAS MANUFACTURED AND SERIAL NO. WHERE SHOWN. IDENTIFICATION TO BE .12 HIGH CHARACTERS, PERMANENT AND LEGIBLE.

REFERENCE DRAWINGS
 9500827 SCHEMATIC
 4000480 PW. BOARD
 9700591 ARTWORK
 9700597 SOLDER MASK

MODEL NO. 620L/620F-100	DIMENSIONS ARE IN INCHES AND AFTER FINISHING	DR. W. QUETADA 8-571	version data machines / a series subsidiary 2722 nicholson drive / irvine / california / 92614
NEXT ASSY SID1034	TOLERANCES UNLESS OTHERWISE SPECIFIED: X ± .1 XX ± .05 XXX ± .01 ANGLES ± .5°	CHK'G DELGADO 8-571	
MATERIAL	FINISH	ENGR. J. MARSH 8-571	TITLE TERMINATOR SHOE
	DO NOT SCALE DRAWING	APP'D L. MENDEZ 8-571	ASSY DM308
		BREAK ALL SHARP EDGES .250 R APPROX	CODE IDENT NO. SIZE DWG NO.
		DO NOT SCALE DRAWING	21101 D 44DO530
		THIS DOCUMENT MAY CONTAIN PROPRIETARY INFORMATION AND SUCH INFORMATION MAY NOT BE DISCLOSED TO OTHERS FOR ANY PURPOSE OR USED TO PRODUCE THE ARTICLE OR SUBJECT WITHOUT WRITTEN PERMISSION FROM VDM	SCALE 2/1
			SHEET 1 OF 1

NOTE: UNLESS OTHERWISE SPECIFIED



REVISIONS				
QTN	DATE	DESCRIPTION	APPROVED	DATE
X		PROTOTYPE RELEASE		
A		PRODUCTION RELEASE EN 5486		
B		ADDED R17 EN 80677		
C		ADDED -001 VERSION PER EN 8078		
D		REVISED PER EN 81235		

REFERENCE DESIGNATIONS		
LAST USED	NOT USED	DASH NO.
R51	ZB-51	-000
R51	R1-22, 24, 26 27, 28, 33, 38 39, 40, 45, 50 51	-001
C2		-000-001

REFERENCE DRAWINGS
 4400530 PARTS LIST
 4400530 ASSY
 4000480 PWB
 9700597 SOLDER MASK

△ ALL RESISTOR VALUES ARE 680Ω, ±5% 1/4W FOR -001 ONLY
 △ ALL RESISTOR VALUES ARE 150Ω, ±5% 1/4W FOR -000 ONLY
 NOTE: UNLESS OTHERWISE SPECIFIED

MODEL NO. 4201/sect-100	DESIGNER J. S. S.	DATE 3-9-71	series date machines / series subsidiary 272 machines Ohio / Texas / California / 3084
NEXT ASST.	CHEK J. S. S.	DATE 4/1/71	
MATERIAL	TELEPHONE J. S. S.	DATE 3-9-71	TITLE SCHEMATIC TERMINATOR SHOE
FINISH	APPROV. J. S. S.	DATE 3/25/71	CODE IDENT. NO. 21101
BREAK ALL SHARP EDGES 200 R APPROX		DWS NO. 9500827	
DO NOT SCALE DRAWING		SCALE NONE	