



Installation guide for the b3000 v1

This guide will provide the steps necessary to install and configure a StorageWorks NAS b3000 v1. This guide uses Quick Restore version 2.12 for the b3000. The purpose of this document is to guide customers and field engineers in the procedures required to install NAS distribution software and then update the system with current service packs, hotfixes, and SoftPaqs relevant to the StorageWorks NAS products. This guide is for new installations only, and does not contain steps for migrating data from an existing installation.

table of contents

Introduction	2
Quick Restore	2
Rapid Launch	2
Configuring and Updating the System	4
Rapid Startup	4
SAN Connection Tool	6
Connecting to MSA1000	6
Patching SWVR in a non-clustered architecture	6
Installing Cluster Services	8
Checklists for Cluster Server Installation	8
Shared Disk Requirements:	8
Installation Overview	9
Setting up Networks	9
Configure the Public Network Adapter	11
Install Cluster Service Software	12
Configuring the First Node	12
Validating the Cluster Installation	18
Configuring the Second Node	19
Verify Installation	20
Upgrading SWVR and SFU to be cluster aware	22
Creating Pools and Virtual Disks	25
Creating a SWVR Pool through the WEBUI	25
Creating Cluster Virtual Servers and Cluster aware file share resources.	25
Creating a Virtual Server with the WEBUI	26

Creating a Virtual Server with Terminal Services	26
Creating Cluster File Share Resources with the WEBUI	27
Creating Cluster File Share Resources with Terminal Services	27

Introduction

This paper will provide a step-by-step process for the installation and configuration of the b3000 v1. It is assumed that the installation will be performed on a new unit or a unit that has just been quick restored. Additional information about any of the topics covered in the document can be located in the Administration guides for the respective products.

Quick Restore

The NAS b3000 v1 Quick Restore CD should be labeled version 2.12.

1. Place the StorageWorks NAS Executor b3000 Quick Restore CD into the CDROM drive on the b3000. With the CD in the CDROM tray, reboot or turn on the server. When prompted press "Q" to begin the Quick Restore.
2. When prompted for the second CD, insert the second CD.

If the b3000 being installed is part of a cluster, save time by placing CD 1 into the second node after it completes on the first node, and start the Quick Restore process.

The Quick Restore process is automated and it is not necessary to interact with the nodes during the restore process.

Rapid Launch

The NAS b3000 includes a RapidLaunch CD that can run on any Windows-based PC using Internet Explorer 5.5 (or greater). The WebUI application is designed to be graphical and easy-to-use, and to assist you in populating information necessary for configuration.

NOTE: The RapidLaunch utility must be run on each node in a cluster.

Requirements

The following items are required to run the WebUI configuration application:

- Windows-based PC loaded with Internet Explorer 5.5 (or greater) on the same network segment as the NAS b3000
- RapidLaunch CD

NOTE: The NAS b3000 is designed to be deployed without a monitor, keyboard, and mouse. These ports are available and supported by the NAS device if used.

To initialize the NAS b3000 using the WebUI configuration application:

CAUTION: Do not power up the NAS device until steps 1-5 are completed.

1. Connect the Ethernet cables to the respective network ports of the NAS b3000.
2. Verify that the Windows-based PC client is connected to the same subnet as the NAS b3000.
3. Power on the Windows-based PC and wait until the operating system has completely loaded.
4. Insert the RapidLaunch CD into the CD-ROM drive.
5. The RapidLaunch CD should automatically run. If the program does not startup automatically, the program may be run manually. Click Start select Run on the Windows taskbar, and then type the following: {CD ROM drive}: \setup.exe. Wait for the interface to startup.
6. Go to the NAS device and power it on. It will be several minutes before the NAS device is accessible on the network.
7. Return to the Windows-based PC. Select **StorageWorks NAS** from the **Show** drop down list to have RapidLaunch list all NAS devices on the network.
8. All the NAS devices found on the network are displayed. The NAS device will be displayed in the device discovery portion of the screen as an unconfigured device. It may take several minutes for the NAS device to be found on the

network.

NOTE: The RapidLaunch utility will refresh periodically looking for new devices on the network. You may refresh the device list manually by selecting the **Refresh** button.

9. Select the unconfigured *StorageWorks* NAS device from the device list. This launches the WebUI configuration application (Rapid Startup) on the target *StorageWorks* NAS device.
10. Follow the instructions on the screen to input the correct information. Verify that your information is correct when the configuration review screen is displayed.
11. Click the **Online** icon to save the network information to the NAS b3000.
12. Click the **Finish** icon to exit Rapid Startup. Close the browser window. The NAS b3000 will now reboot to set the configuration information.
13. If the NAS b3000 is being deployed in a cluster configuration, go back to the RapidLaunch utility program and select the next unconfigured NAS device to be used within the cluster and repeat steps 8-12 for the second node.
14. Exit the RapidLaunch utility and remove the RapidLaunch CD from the CD-ROM drive and store it in a secure location.

Configuring and Updating the System

NOTE: In a cluster configuration, from this point forward, the first node will be referred to as **NODE A** and the second node will be referred to as **NODE B**.

The Rapid Launch utility allows an administrator to configure the nodes network configurations from a client before the Quick Restore process. The configuration is saved to a floppy, which may be inserted into the node during the Quick Restore process. This is an optional configuration method, and if a floppy has not been inserted then a screen will appear with three options when the Quick Restore is completed. If a diskette was not created select *IGNORE* and then *CONTINUE*, select *YES* to complete the utility.

Download and install the StorageWorks NAS Cluster Setup Tool update from the following link:

<http://h18006.www1.hp.com/support/files/server/us/download/14994.html>

Download and install the Compaq StorageWorks NAS Services For Unix version 2.3 and WebUI update from the following link:

<http://h18006.www1.hp.com/support/files/server/us/download/15012.html>

This will reboot the node.

After the reboot has completed navigate to C:\sfu23. Right click on info.inf and select install.

Download and install the StorageWorks NAS Data Copy fix for uninstall problem from the following link:

<http://h18006.www1.hp.com/support/files/server/us/download/17535.html>

Install SP3 or any other hot fixes required to be installed.

Note: At the link above, there are other software updates available that do not apply to this configuration. Install only the items specifically mentioned here. Do not install the SWVR patch 1, SWVR patch 2 or the Compaq StorageWorks Virtual Replicator Service Patch 116B. They are all installed with the image. The Compaq SANworks Virtual Replicator Update will be applied later in the configuration. (SoftPaq 2829)

Note: Complete this process on both nodes.

Rapid Startup

From a remote node, open an Internet Explorer session and navigate to the WEBUI for StorageWorks NAS. The WEBUI is accessible through the hostname and port 3201. For example <http://hostname:3201>.

The Rapid Startup Utility is provided to allow a quick setup of the network connections. The Rapid Startup Utility will be the first page displayed when the WEBUI is opened. Rapid Startup will allow for the configuration of all network adapters and the Remote Insight Board. The Rapid Startup Utility is accessible through the WEBUI.

1. Click on the Internet Explorer icon in the fast start tray. Navigate to <http://hostname:3201>. A prompt for a username and password will appear. The user name is administrator, there is no password. The password is the same password that is used for the local administrator account on the server, so if the password has been changed for the local administrator's account it must also be used to login into the WEBUI.
2. Complete the Rapid Startup by filling in the appropriate information in the fields provided.
3. Once rapid start is complete the node will reboot.

NOTE: Make sure to run the Rapid Startup Utility on both nodes before continuing

SAN Connection Tool

The SAN Connection Tool is a utility which configures the nodes for connection to a StorageWorks SAN. The SAN Connection tool is accessible through the WEBUI and must be completed after the Rapid Startup utility. **No** Fiber cables should be connected to the node at this time and the nodes should remain unconnected until after the SAN Connection Tool process is completed.

From a remote node, click on the Internet Explorer icon in the fast start tray. Navigate to <http://hostname:3201>. A prompt for a username and password will appear. The user name is administrator, the password should be null if this is a new install (the password is the same password that is used for the local administrator account on the server).

Verify that no fiber cables are connected to the HBAs.

The StorageWorks NAS b3000 v1 uses the HP StorageWorks Modular SAN Array 1000 (MSA1000) storage subsystem.

Connecting to MSA1000

1. Open lputilnt from a run command and verify that the HBA driver is 5-4.82a9 and the firmware is 3.81a1
2. Select Next and the tool will install the necessary components
3. Secure path v3.1b will be installed with this utility.

NOTE: Make sure to do this on both nodes before continuing.

IMPORTANT: Connect the NAS system(s) to the MSA1000 Storage subsystem at this time.

Patching SWVR in a non-clustered architecture

This section is for a stand-alone architecture. If the b3000 is to be clustered skip to the next section entitled "Installing Cluster Services".

The only patch required is the Compaq SANworks Virtual Replicator Update. (SoftPaq 2829)

<http://h18006.www1.hp.com/support/files/server/us/download/16247.html>

Installation Instructions for stand-alone systems:

1. Place the Smart Component in a temporary directory on the NAS system, then double-click it to run.
2. Click 'Install' at the Compaq Package Setup screen.
3. Click 'Install' at the Compaq Setup screen.
4. All the necessary files will be extracted to C:\CP002829.
5. Browse to "C:\Winnt\System32\Drivers."
6. Rename the file CPQVRBus.sys to CPQVRBus.sys.bak.
7. Copy the file "C:\CP002829\CPQVRBus.sys" to the directory "C:\Winnt\System32\Drivers."
8. Browse to "C:\Program Files\Compaq\SANWorks Virtual Replicator 2.5\WDM"
9. Rename the file CPQVRBus.sys to CPQVRBus.sys.bak.
10. Copy the file "C:\CP002829\CPQVRBus.sys" to the directory C:\Program Files\Compaq\SANWorks Virtual Replicator 2.5\WDM"
11. Browse to "C:\Winnt\System32."

12. Rename the file Sdapi.dll to Sdapi.dll.bak.
13. Copy the file "C:\CP002829\Sdapi.dll to the directory "C:\Winnt\System32."
14. Browse to "C:\Program Files\Compaq\SANWorks Virtual Replicator 2.5."
15. Rename the file Sdapi.dll to Sdapi.dll.bak.
16. Rename the file VRRRegMon.exe to VRRRegMon.exe.bak.
17. Copy the file "C:\CP002829\Sdapi.dll to the directory "C:\Program Files\Compaq\SANWorks Virtual Replicator 2.5."
18. Copy the file "C:\CP002829\VRRRegMon.exe to the directory "C:\Program Files\Compaq\SANWorks Virtual Replicator 2.5."
19. Restart the system.

Installing Cluster Services

This section is for installing and configuring cluster services. If the b3000 is not to be part of a cluster, skip this section.

It is possible to configure cluster services remotely through the WEBUI using the Cluster Setup Tool. To access the Cluster Setup Tool open an Internet Explorer session from the remote client and navigate to <http://hostname:3201>. Once the WEBUI is open select the link from the left hand side labeled Cluster Setup Tool. Follow the instructions in the Cluster Setup Tool to configure the cluster configuration.

Confirm that the following specifications have been met before proceeding:

- When configuring the b3000 v1 in a cluster with MSA storage, it is highly recommended that the MSA controllers are upgraded to v2.38 or higher. A utility can be downloaded from the following location to update the MSA firmware:
 - <http://h18006.www1.hp.com/products/storageworks/softwaredrivers/msa1000/v238.html>
- The SAN Connection Tool must be completed and all the necessary software components for connecting to the desired storage must be installed before the configuration of cluster services.
- At least one LUN must be presented for the configuration of the Quorum disk. Additional LUNS may also be presented for use as shared disk resources.
- Do not present LUNs to both cluster nodes until after cluster services have been installed.

More detailed information about setting up clusters is available at

<http://www.microsoft.com/windows2000/techinfo/planning/server/clustersteps.asp>

Since each cluster node will be shut down one or more times during this installation, print this guide, or copy it elsewhere and view it on a separate system.

Checklists for Cluster Server Installation

This checklist assists in preparing for installation. Step-by-step instructions begin after the checklist.

Network Requirements:

- A unique NetBIOS cluster name.
- Five unique, static IP addresses: two for the network adapters on the private network, two for the network adapters on the public network, and one for the cluster itself.
- A domain user account for the Cluster service (all nodes must be members of the same domain).
- Each node should have at least two network adapters—one for connection to the node-to-node private cluster network and the others for the public data network. Do not attempt to use a single network adaptor for both public and private cluster communications.

Shared Disk Requirements:

Note: Do not let both nodes access the shared storage devices at the same time until after the Cluster service is installed on at least one node and that node is online. This can

be accomplished through selective storage presentation, SAN switch zoning or having only one node online at all times.

- All software components listed in the SAN connection tool must be installed and the fiber cables attached to the HBA(s) before the cluster installation is started.
- All shared disks, including the quorum disk, must be accessible from both nodes. However, do not let the shared disk be accessed by both nodes at the same time until Cluster Services has been installed on at least one node.
- All shared disks must be configured as basic (not dynamic).
- All partitions on the disks must be formatted as NTFS.

Installation Overview

During the installation process, both nodes will be shut down and both nodes will be rebooted. These steps are necessary to guarantee that the data on disks that are attached to the shared storage bus is not lost or corrupted. This can happen when multiple nodes try to simultaneously write to the same disk that is not yet protected by the cluster software.

Use Table 1 below to determine which nodes and storage devices should be presented during each step.

Step	Node 1	Node 2	Storage	Comments
Setting Up Networks	On	On	Not Presented	Verify that all storage devices on the shared bus are not presented. Power on both nodes.
Setting up Shared Disks	On	Off	Presented	Shutdown both nodes. Present the shared storage Power on the first node.
Verifying Disk Configuration	Off	On	Presented	Shut down first node. Power on second node.
Configuring the First Node	On	Off	Presented	Shutdown all nodes. Power on the first node.
Configuring the Second Node	On	On	Presented	Power on the second node after the first node was successfully configured.
Post-installation	On	On	Presented	At this point all nodes should be on.

Table 1. Power Sequencing for Cluster Installation

To configure the Cluster service on the StorageWorks NAS server, the login account must have administrative permissions on each node. Both nodes must be member servers within the same domain.

Setting up Networks

Note: Do not let both nodes access the shared storage devices at the same time until the Cluster service is installed on at least one node and that node is online. This can be accomplished through selective storage presentation, SAN switch zoning or having only one node online at all times.

Each cluster node requires at least two network adapters—one to connect to a public network, and one to connect to a private network consisting of cluster nodes only.

The private network adapter establishes node-to-node communication, cluster status signals, and cluster management. Each node's public network adapter connects the cluster to the public network where clients reside.

Verify that all network connections are correct, with private network adapters connected to other private network adapters only, and public network adapters connected to the public network.

Configure the Private Network Adapter

The following procedures are Best Practices provided by Microsoft and should be configured on the private network adapter.

- On the General tab of the private network adapter, ensure that only TCP/IP is selected
- Under the advanced settings for the private network adapter, select the DNS Tab. Ensure that the register this connections address in DNS is not selected.
- Open the advanced tab for the Ethernet card used for the private network adapter. Ensure that the Link Speed and Duplex is set to 100Mbps/Full Duplex
- If a crossover cable is used for the private adapter and since one node will be powered down during the cluster installation. The private network adapter will be in a disconnected state during installation, the Cluster service does not detect the adapter because there are no protocols bound to the adapter. If Media Sense is disabled the network adapter still shows the "disconnected" status, but the cluster installation process can detect the adapter as available for cluster communication. To make this change open regedit and add the following Dword value:
 - HKEY_LOCAL_MACHINE\SYSTEM\CurrentControlSet\Services\Tcpip\Parameters
 - Value Name: DisableDHCPMediaSense
 - Data Type: Reg_Dword
 - Data: 1

WARNING : Using Registry Editor incorrectly can cause serious problems that may require you to reinstall your operating system. You should backup your Registry before making any changes. Use Registry Editor at your own risk. For information about how to backup, edit, and restore the Registry in Windows 2000, see Microsoft Knowledge Base Article Q322755:

<http://support.microsoft.com/default.aspx?scid=kb;EN-US;q322755>

Note: If the private network connection is made using a crossover cable, then the procedures outlined in Knowledge Base (KB) article [Q242430](#)

(<http://support.microsoft.com/support/kb/articles/Q242/4/30.ASP>) should be followed and the node rebooted prior to installing the Cluster service. If this procedure is not completed, and the second node is powered off while installing the Cluster service on the first node, the private network adapter may not be detected. This will prevent configuring the adapter during the Cluster service installation. However, after the Cluster service is installed on both nodes and both nodes are powered on, the adapter can be added as a cluster resource and be configured properly for the private network in Cluster Administrator.

Configure the Public Network Adapter

Note: While the public network adapter's IP address can be automatically obtained if a DHCP server is available, this is not recommended for cluster nodes. We strongly recommend setting static IP addresses for all network adapters in the cluster, both private and public. If IP addresses are obtained via DHCP, access to cluster nodes could become unavailable if the DHCP server goes down. If you must use DHCP for your public network adapter, use long lease periods to assure that the dynamically assigned lease address remains valid even if the DHCP service is temporarily lost. In all cases, set static IP addresses for the private network connector. Keep in mind that Cluster service will recognize only one network interface per subnet. If you need assistance with TCP/IP addressing in Windows 2000, please see [Windows 2000 Online Help](http://www.microsoft.com/windows2000/techinfo/proddoc/default.asp) (<http://www.microsoft.com/windows2000/techinfo/proddoc/default.asp>).

Rename the Local Area Network Icons

Change the names of the network connections for clarity. The naming will help identify a network and correctly describes its role.

Verifying Connectivity and Name Resolution

To verify name resolution, ping each node from a client using the node's machine name instead of its IP address.

Verifying Domain Membership

Both nodes in the cluster must be members of the same domain and able to access a domain controller and a DNS Server.

Setting Up a Cluster User Account

The Cluster service requires a domain user account under which the Cluster service can run. This user account must be created before installing the Cluster service, because setup requires a user name and password. This user account should not belong to a user on the domain. This user account will need to be granted administrator privileges.

About the Quorum Disk

Once both nodes have completely powered down, power up node A.

The quorum disk is used to store cluster configuration database checkpoints and log files that help manage the cluster. The quorum disk must be a shared disk resource. We make the following quorum disk recommendations:

- Create a small partition [A minimum of 50 megabytes (MB) to be used as a quorum disk. We recommend a quorum disk have at least 1GB of free space.]
- Dedicate a separate disk resource for a quorum disk. As the failure of the quorum disk would cause the entire cluster to fail, it is strongly recommended that the disk resource be a RAID 1 configuration.

During the Cluster service installation, a drive letter must be provided for the quorum disk. It is recommended to use the drive letter Q for the quorum disk.

Configuring Shared Disks

Use Disk Management to configure the quorum and shared disk resources. Verify that all shared disks are formatted as **NTFS** and are designated as **Basic**.

Verifying Disk Access and Functionality

Write a file to each shared disk resource to verify functionality.

At this time, shut down the first node, power on the second node and repeat the *Verifying Disk Access and Functionality* step above. When it has been verified that both nodes can read and write from the disks, shut down the second node and power on the first, and then continue with this guide.

Install Cluster Service Software and Configuring the First Node

Note: *During installation of Cluster service on the first node, the second node must be shut down. All shared storage devices should be powered up.*

In the first phase of installation, all initial cluster configuration information must be supplied so that the cluster can be created. This is accomplished using the **Cluster Service Configuration** Wizard.

1. Click **Start**, click **Settings**, and click **Control Panel**.
2. Double-click **Add/Remove Programs**.
3. Double-click **Add/Remove Windows Components**.
4. Select **Cluster Service**. Click **Next**.
5. When prompted for files on the Windows Powered OS CD or the Windows 2000 SP3 cd, browse to the directory **C:\Compaq\Windows Components\i386**.
6. The window shown in Figure 7 below appears. Click **I Understand** to accept the condition that the Cluster service is supported on hardware from the Hardware compatibility List only.

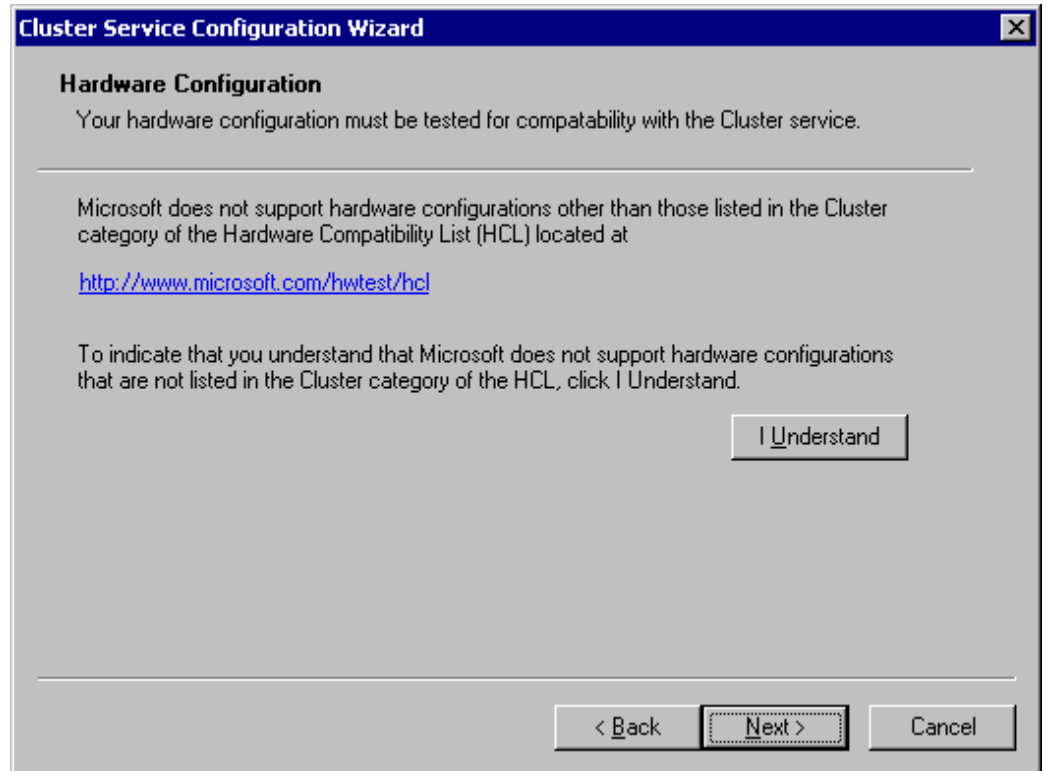


Figure 7. Hardware Configuration Certification Screen

7. Because this is the first node in the cluster, the cluster must be created. Select **the first node in the cluster**, as shown in Figure 8 below and then click **Next**.



Figure 8. Create New Cluster

8. Enter a name for the cluster (up to 15 characters), and click **Next**. (In our example, we name the cluster **MyCluster**.)
9. Type the **user name** and **password** of the cluster service account that was created during the pre-installation. Type the **domain name**, and click **Next**.

At this point the **Cluster Service Configuration Wizard** validates the user account and password.

10. Click **Next**.

Configuring Cluster Disks

Note: *By default, all SCSI disks not residing on the same bus as the system disk will appear in the Managed Disks list. Therefore, if the node has multiple SCSI buses, some disks may be listed that are not to be used as shared storage (for example, an internal SCSI drive.) Such disks should be removed from the Managed Disks list.*

11. The **Add or Remove Managed Disks** dialog box shown in Figure 9 specifies which shared disks will be used by Cluster service. Add or remove disks as necessary and then click **Next**.

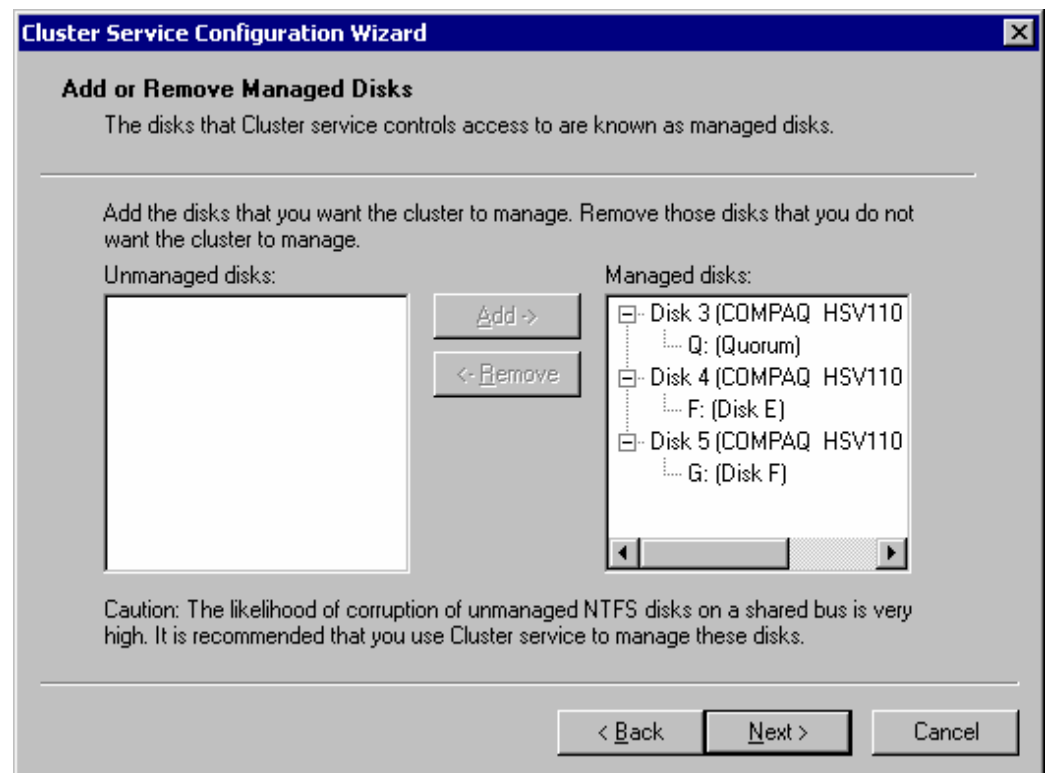


Figure 9. Add or Remove Managed Disks

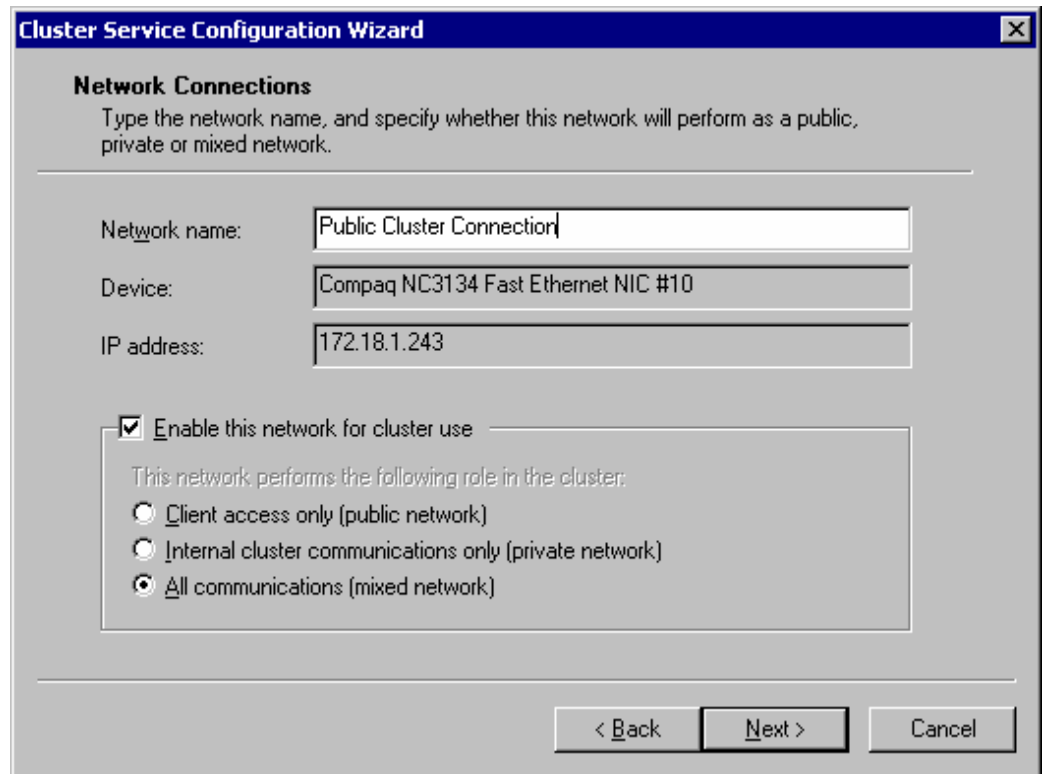
The first partition of the first disk is selected as the quorum resource by default. Change this to denote the small partition that was created as the quorum disk (in our example, drive **Q**). Click **Next**.

In production clustering scenarios more than one private network for cluster communication must be used to avoid having a single point of failure. Cluster service can use private networks for cluster status signals and cluster management. This provides more security than using a public network for these roles. It is possible to use a public network for cluster management, or use a mixed network for both private and public communications. In any case, make sure at least two networks are used for cluster communication, as using a single network for node-to-node communication represents a potential single point of failure. We recommend that multiple networks be used, with at least one network configured as a private link between nodes and other connections through a public network. If you have more than one private network, make sure that each uses a different subnet, as Cluster service recognizes only one network interface per subnet.

This document is built on the assumption that only two networks are in use. It shows how to configure these networks as one mixed and one private network.

The order in which the **Cluster Service Configuration** Wizard presents these networks may vary. In this example, the public network is presented first.

12. Click **Next** in the **Configuring Cluster Networks** dialog box.
13. Make sure that the network name and IP address correspond to the network interface for the *public* network.
14. Check the box **Enable this network for cluster use**.
15. Select the option **All communications (mixed network)** as shown in Figure 10 below.
16. Click **Next**.



Cluster Service Configuration Wizard

Network Connections
Type the network name, and specify whether this network will perform as a public, private or mixed network.

Network name:

Device:

IP address:

Enable this network for cluster use

This network performs the following role in the cluster:

Client access only (public network)

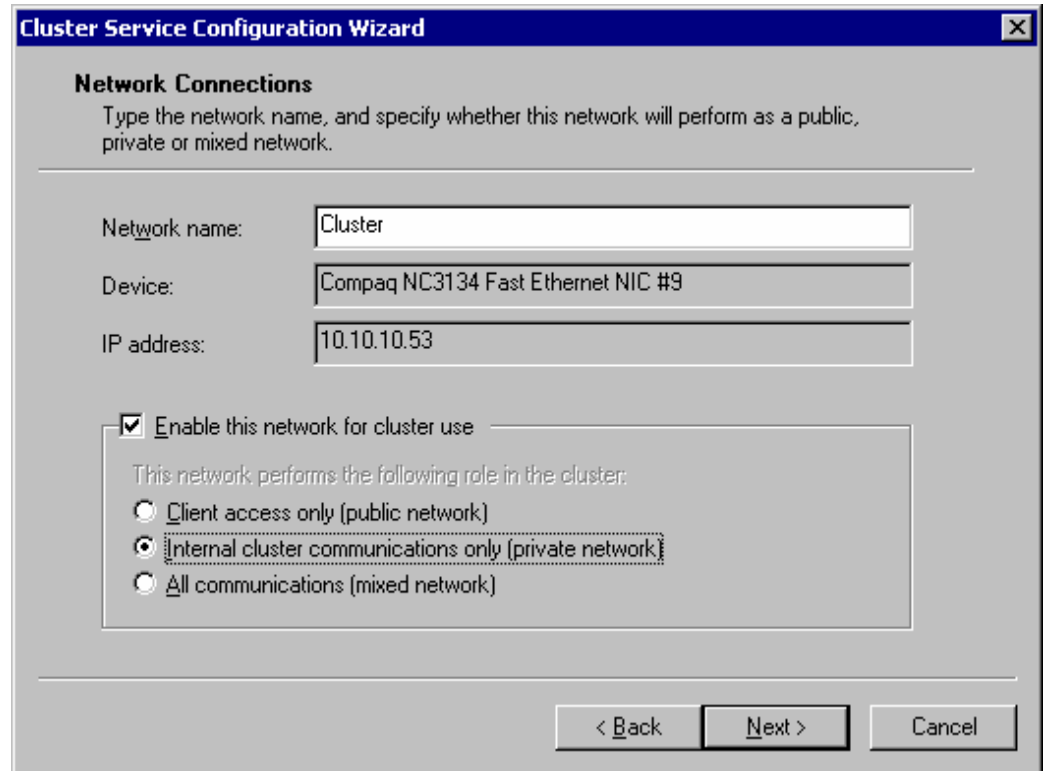
Internal cluster communications only (private network)

All communications (mixed network)

< Back Next > Cancel

Figure 10. Public Network Connection

17. The next dialog box shown in Figure 11 configures the private network. Make sure that the network name and IP address correspond to the network interface used for the *private* network.
18. Check the box **Enable this network for cluster use**.
19. Select the option **Internal cluster communications only**.



The image shows a Windows-style dialog box titled "Cluster Service Configuration Wizard". The main heading is "Network Connections". Below the heading is a brief instruction: "Type the network name, and specify whether this network will perform as a public, private or mixed network." There are three input fields: "Network name:" with the value "Cluster", "Device:" with the value "Compaq NC3134 Fast Ethernet NIC #9", and "IP address:" with the value "10.10.10.53". Below these fields is a checked checkbox labeled "Enable this network for cluster use". Underneath the checkbox is a text box containing the text "This network performs the following role in the cluster:" followed by three radio button options: "Client access only (public network)", "Internal cluster communications only (private network)" (which is selected), and "All communications (mixed network)". At the bottom right of the dialog are three buttons: "< Back", "Next >", and "Cancel".

Figure 11. Private Network Connection

20. Click **Next**.
21. In this example, both networks are configured in such a way that both can be used for internal cluster communication. The next dialog window offers an option to modify the order in which the networks are used. Because **Private Cluster Connection** represents a direct connection between nodes, it is left at the top of the list. In normal operation this connection will be used for cluster communication. In case of the **Private Cluster Connection** failure, cluster service will automatically switch to the next network on the list—in this case **Public Cluster Connection**. Make sure the first connection in the list is the Private Cluster Connection and click **Next**.

Important: Always set the order of the connections so that the Private Cluster Connection is first in the list

22. Enter the unique cluster **IP address** and **Subnet mask**, and click **Next**.

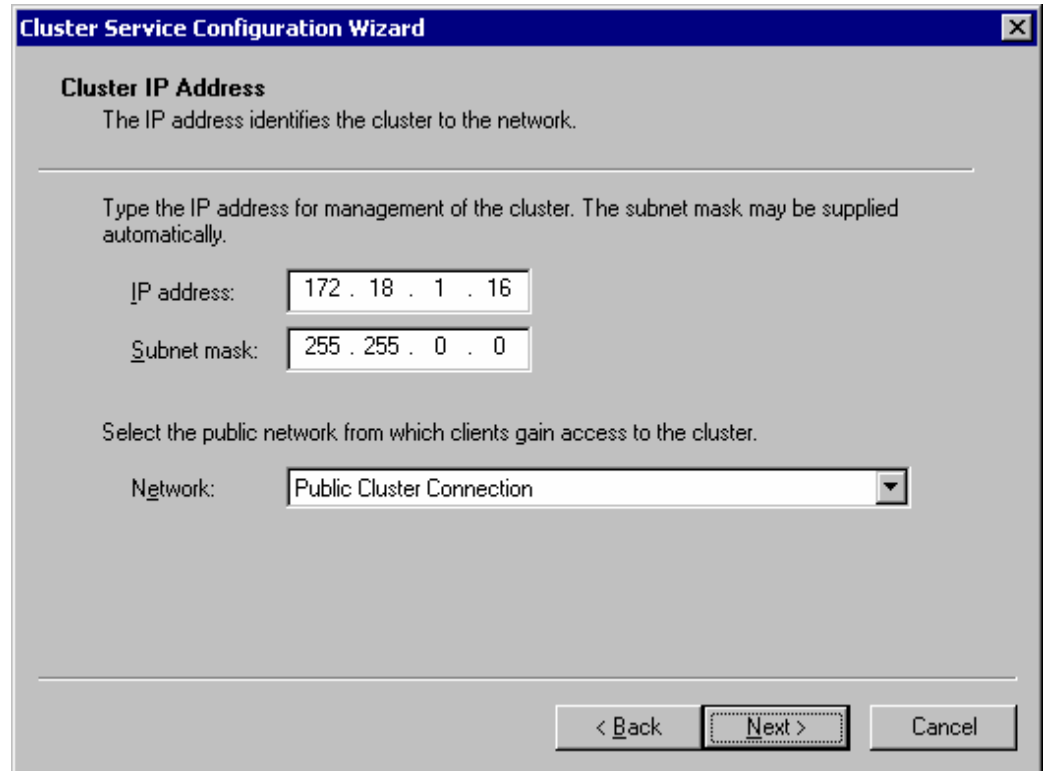


Figure 12. Cluster IP Address

The **Cluster Service Configuration** Wizard shown in Figure 12 automatically associates the cluster IP address with one of the public or mixed networks. It uses the subnet mask to select the correct network.

23. Click **Finish** to complete the cluster configuration on the first node.

The **Cluster Service Setup** Wizard completes the setup process for the first node by copying the files needed to complete the installation of Cluster service. After the files are copied, the Cluster service registry entries are created, the log files on the quorum resource are created, and the Cluster service is started on the first node.

A dialog box appears telling you that Cluster service has started successfully.

24. Click **OK**.
25. Close the **Add/Remove Programs** window.

Validating the Cluster Installation

Use the Cluster Administrator snap-in to validate the Cluster service installation on the first node.

1. Click **Start**, click **Programs**, click **Administrative Tools**, and click **Cluster Administrator**.

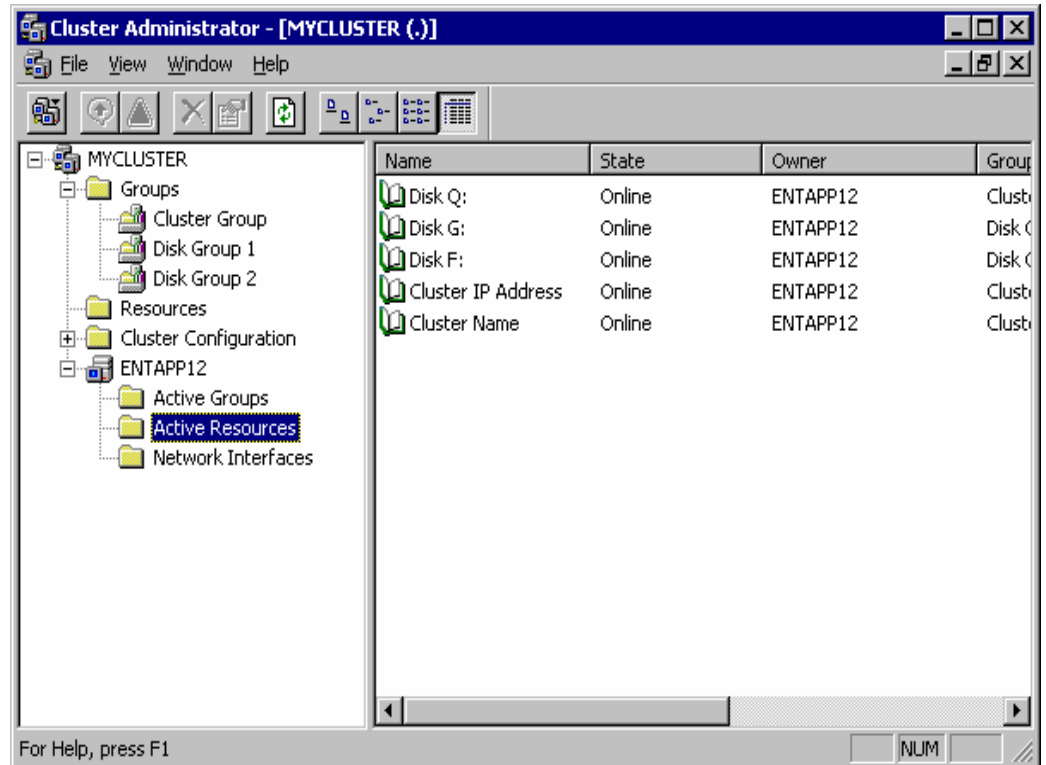


Figure 13. Cluster Administrator

If your snap-in window is similar to that shown above in Figure 13, your Cluster service was successfully installed on the first node. It is now possible to install the Cluster service on the second node.

Configuring the Second Node

Note: For this section, leave the first node on and power up the second node.

Installing Cluster service on the second node requires less time than on the first node. Setup configures the Cluster service network settings on the second node based on the configuration of the first node.

Installation of Cluster service on the second node begins exactly as for the first node. During installation of the second node, the first node must be running.

Follow the same procedures used for installing Cluster service on the first node, with the following differences:

1. In the **Create or Join a Cluster** dialog box, select **The second or next node in the cluster**, and click **Next**.
2. Enter the cluster name that was previously created (in this example, **MyCluster**), and click **Next**.
3. Leave **Connect to cluster as** unchecked. The **Cluster Service Configuration** Wizard will automatically supply the name of the user account selected during the installation of the first node. Always use the same account used when setting up the first cluster node.

4. Enter the password for the account (if there is one) and click **Next**.
5. At the next dialog box, click **Finish** to complete configuration.
6. The Cluster service will start. Click **OK**.
7. Close **Add/Remove Programs**.

Verify Installation

There are several ways to verify a successful installation of Cluster service. Here is a simple one:

1. Click **Start**, click **Programs**, click **Administrative Tools**, and click **Cluster Administrator**.

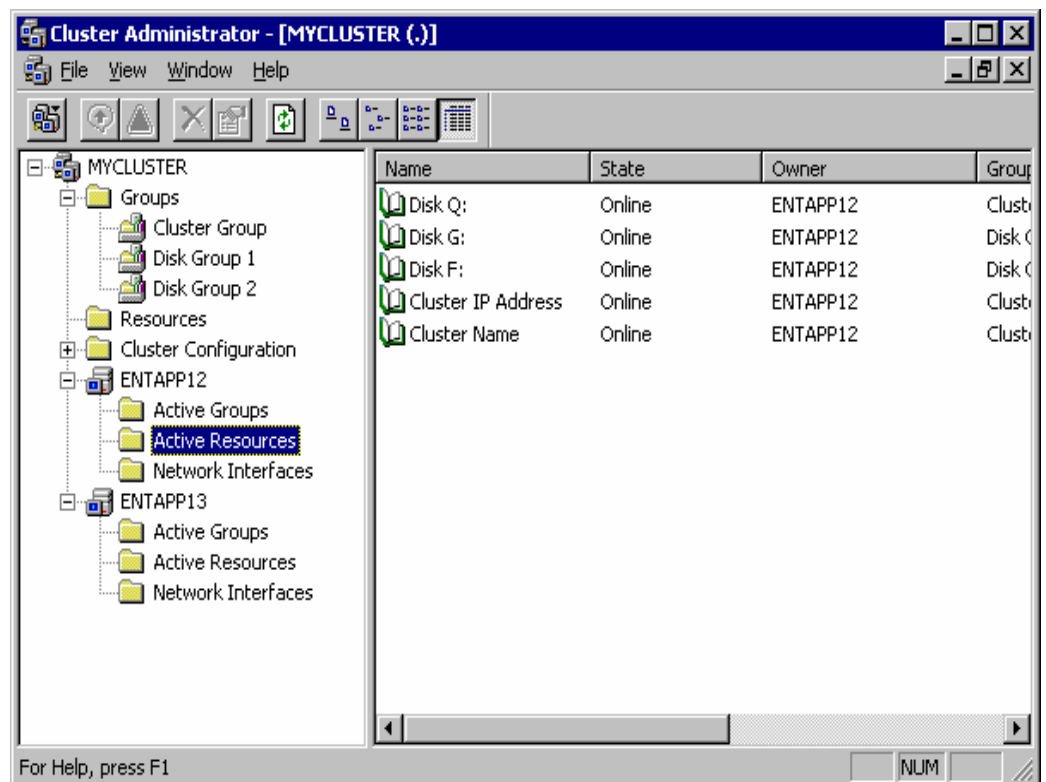


Figure 14. Cluster Resources

The presence of two nodes (Entapp12 and Entapp13 in Figure 14 above) shows that a cluster exists and is in operation.

2. Right-Click on one of the groups and select the option **Move**. The group and all its resources will be moved to the other node. After a short period of time the cluster resources will be brought online on the second node. If you watch the screen, you will see this shift. Close the **Cluster Administrator** snap-in.
3. If this test fails then the cluster configuration was not successful. Further information can be found in the event logs and it may be necessary to reinstall cluster services on one of the nodes.

Congratulations. You have completed the installation of Cluster service on both nodes. The server cluster is fully operational.

Upgrading SWVR and SFU to be cluster aware

For cluster configurations, the Virtual Replicator and Services For UNIX software must be updated. If the b3000 is not being installed as part of a b3000 cluster, please skip this section.

If the Cluster Setup Tool was not used for cluster configuration then follow the steps provided below to update SWVR, SFU and NAS Datacopy to be cluster aware. If the Cluster Setup Tool was used to configure the cluster configuration this section may be skipped.

It is necessary to upgrade SANWorks Virtual Replicator (SWVR) and Services for UNIX (SFU) after the successful installation of the Cluster Service on both nodes.

This tool will make SWVR cluster-aware and install the 116B and 116C patches. It is not necessary to reinstall the 116B and 116C patches once this process is complete. This must be completed remotely. Do not run the update utility locally on the NAS cluster node.

Procedures:

1. Ensure that all cluster resources reside on NODE A
2. From a remote node, click on the Internet Explorer icon in the fast start tray. A prompt for a username and password will appear. The user name is administrator, the password should be null if this is a new install (the password is the same password that is used for the local administrator account on the server. The default administrator password may have been changed earlier in the installation when Rapid Startup prompted for an administrator password.
3. Navigate to the WEBUI for NODE B
 - a. In address field type the hostname or IP address for NODE B followed by port 3201. For example: NODEB:3201
4. From the frame on the left choose "Cluster Setup Tool".
 - a. Choose "Is this a Cluster Recovery" and select NEXT. (This option is at the very bottom of the page and one might have to scroll down to see the option.) Selecting the Cluster Recovery option allows the tool to be run starting close to the software update section.
5. Check the boxes to confirm that the steps have been completed and select NEXT.
6. Check the box to validate that the Quorum disk can be seen and select NEXT.
7. Select NEXT on the Install Microsoft Cluster Services Screen.
8. Check the box to validate that the cluster service has started and select NEXT.
9. Check the box to confirm that Secure Path has been configured and select NEXT.
 - a. There will be two more Secure Path pages. Check the box and select next to navigate through these pages.
10. Click the "Click here to make VR Cluster Aware". This process will uninstall SWVR on NODE B, reboot NODE B and then reinstall SWVR on NODE B. When this process is complete select NEXT.
11. On the "Upgrade Services for Unix" page, click the "Click here to Start the Upgrade Process". This will reboot NODE B. When the process is complete select NEXT.
12. Depending on the version of the system image an upgrade of StorageWorks NAS Data Copy may also be necessary. Select the *CLICK HERE TO UPGRADE DATA COPY* link. This will upgrade Data Copy. When the process is complete select NEXT.

13. Select Finish ending the wizard.
14. Repeat steps 1-13 for NODE A.

Confirm that the SWVR upgrade process was successful on both nodes:

- Open services and confirm that the Virtual Replicator Registry Cleanup Tool Service is installed and started.
- If this service is not installed, the patches did not take and VR needs to be updated again.
- To rerun the update:
 - On the node the update failed, open registry edit and navigate to the following key:
 - Hkey_Local_Machine\Software\Compaq\StorageWorksNAS
 - Delete the key named SWVRInstState
 - Open the cluster setup tool and rerun the SWVR upgrade process

WARNING : Using Registry Editor incorrectly can cause serious problems that may require you to reinstall your operating system. You should backup your Registry before making any changes. Use Registry Editor at your own risk. For information about how to backup, edit, and restore the Registry in Windows 2000, see Microsoft Knowledge Base Article Q322755:

<http://support.microsoft.com/default.aspx?scid=kb;EN-US;q322755>

Once the installation is confirmed download and install the following patch:
Compaq SANworks Virtual Replicator Update. (SoftPaq 2829)

<http://h18006.www1.hp.com/support/files/server/us/download/16247.html>

Installation Instructions for clustered systems:

1. Migrate all resources to a single node of the cluster using Cluster Administrator.
2. On the node from which the resources were removed, install Smart Component CP002829.EXE.
3. Click 'Install' at the Compaq Package Setup screen.
4. Click 'Install' at the Compaq Setup screen.
5. All the necessary files will be extracted to C:\CP002829.
6. Browse to "C:\Winnt\System32\Drivers."
7. Rename the file CPQVRBus.sys to CPQVRBus.sys.bak.
8. Copy the file "C:\CP002829\CPQVRBus.sys" to the directory C:\Winnt\System32\Drivers."
9. Browse to "C:\Program Files\Compaq\SANWorks Virtual Replicator 2.5\WDM"
10. Rename the file CPQVRBus.sys to CPQVRBus.sys.bak.
11. Copy the file "C:\CP002829\CPQVRBus.sys" to the directory C:\Program Files\Compaq\SANWorks Virtual Replicator 2.5\WDM"
12. Browse to "C:\Winnt\System32."
13. Rename the file Sdapi.dll to Sdapi.dll.bak.
14. Copy the file "C:\CP002829\Sdapi.dll to the directory "C:\Winnt\System32."
15. Browse to "C:\Program Files\Compaq\SANWorks Virtual Replicator 2.5."
16. Rename the file Sdapi.dll to Sdapi.dll.bak.
17. Rename the file VRRegMon.exe to VRRegMon.exe.bak.
18. Copy the file "C:\CP002829\Sdapi.dll to the directory "C:\Program Files\Compaq\SANWorks Virtual Replicator 2.5."
19. Copy the file "C:\CP002829\VRRegMon.exe to the directory "C:\Program

- Files\Compaq\SANWorks Virtual Replicator 2.5."
20. Shutdown and restart the system.
21. Repeat steps 1-20 on the second node

Note: Do not install the SWVR patch 1, SWVR patch 2 or the Compaq StorageWorks Virtual Replicator Service Patch 116B. They are all installed with the image.

Creating Pools and Virtual Disks

StorageWorks NAS utilizes a software program named SANworks Virtual Replicator to virtualize storage at the host based level. Once LUNS have been presented to the nodes it is possible to create Pools of storage. Pools can be comprised of up to eight LUNS. From the Pools Virtual Disks can be created. Up to eight virtual Disks can be created from a single pool. In a cluster configuration, when a Pool is created it will show up as a SCE Pool resource in Cluster Administrator. Additional information about SWVR can be located in the Administration Guide for the respective product.

Creating a SWVR Pool through the WEBUI

Note: Ensure that a local administrator's account is logged in locally ON BOTH NODES before creating any SWVR resources remotely. The server console may be locked after the local administrator's account has logged in. This can not be accomplished through terminal services; it must be done locally at the console or through the RIB board.

- Open the WEBUI and select the Virtual Replicator link from the menu on the left hand side
- Select Pools
- Select New
- Select the storage unit or units that will compose the pool, name the pool and specify the segment size and select OK.

Creating a SWVR Virtual Disk through the WEBUI

Note: Ensure that a local administrator's account is logged in locally ON BOTH NODES before creating any SWVR resources remotely. The server console may be locked after the local administrator's account has logged in. This can not be accomplished through terminal services; it must be done locally at the console or through the RIB board.

- Open the WEBUI and select the Virtual Replicator link from the menu on the left hand side
- Select Virtual Disk
- Select NEW, then select NEXT
- In the drop down list select the Pool the virtual disk is going to be created from and select NEXT
- Name the Virtual Disk and specify the capacity. The capacity available is the figure listed under free space – 30%. The 30% is the snapshot reserve. Select the driver letter and specify if it is to be formatted. Select Next
- Confirm that all of the settings are correct and select Finish.

Creating Cluster Virtual Servers and Cluster aware file share resources.

Once the cluster installation is complete it is possible to create Virtual Servers and Cluster aware file share resources.

Virtual Servers

Through server clusters, StorageWorks NAS enables the creation of virtual servers. Unlike a physical server, a virtual server is not associated with a specific computer and can be failed over like a group. If the node hosting the virtual server fails, clients can still access its resources using the same server name. A virtual server is a group that contains:

- A Network Name resource.
- An IP Address resource.
- The physical disks and file shares to be accessed by the clients of the virtual server.

A virtual server acts like a physical server in the following ways:

- Allows access to network resources.
- Is published to network clients under a unique server name.
- Is associated with a network name and an IP address.

Creating a Virtual Server with the WEBUI

Create a new Cluster Group

- Open the WEBUI and select the Cluster Management Link on the left hand side.
- Click on the Resource Groups link and select NEW
- Enter a name, description and set the preferred nodes. Select OK to create the new Group

Create an IP Address resource

- Select the Resources link under Cluster Management.
- Select NEW, select NEXT.
- Specify the resource name, description, type and the cluster group it needs to reside in. The type will be IP Address. The group should be the cluster group created in the previous steps. Select NEXT.
- Specify the possible nodes. (should be both nodes) Select NEXT.
- Specify the dependencies. IP addresses do not have any dependencies. Select NEXT.
- Enter the IP Address, Subnet and preferred network. Select NEXT.
- Confirm that all parameters are correct and select FINISH to create the resource.

Create a Network Name Resource

- Select the Resources link under Cluster Management.
- Select NEW, select NEXT.
- Specify the resource name, description, type and the cluster group it needs to reside in. The type will be Network Name. The group should be the cluster group created in the previous steps. Select NEXT.
- Specify the possible nodes. (should be both nodes) Select NEXT.
- Specify the dependencies. Network Names must be dependent on an IP address resource.
- Enter the name and select NEXT.
- Verify the parameters and select FINISH to create the resource.

Creating a Virtual Server with Terminal Services

Open Cluster administrator. Cluster administrator can be opened by selecting Start->Run->cluadmin

- Select *FILE->NEW->GROUP*
- Type the name for the new group and enter a description if desired. Select *NEXT* to continue.
- Select the preferred owner. This is generally one of the two servers listed. In an active-active cluster configuration you would set half of the groups to be preferred by one node and the other groups to be preferred by the other node.
- Select Finish creating the new group.
- Select *FILE->NEW->RESOURCE*
- This will be an IP Address resource, type a name for the resource. In the resource type window select *IP ADDRESS*. In the Group window select the name of the group previously created. Select *NEXT* to continue.
- Select the possible owners and select *NEXT* to continue. Usually both nodes are

set to be possible owners.

- Select *NEXT* on the dependencies window to continue. IP Address resources will not have any dependencies.
- Enter the IP Address and Subnet mask. Select the Network adapter for this address. Select *FINISH* creating the resource.
- Select *FILE->NEW->RESOURCE*
- This will be a Network Name resource. Enter a name and description for the resource for the resource. In the resource type window select *NETWORK NAME*. In the group window select the name of the group previously created. Select *NEXT* to continue.
- Select the possible owners and select *NEXT* to continue. Usually both nodes are set to be possible owners.
- Select the IP Address resource previously created and select *ADD*. Select *NEXT* in the dependencies window to continue.
- Enter the *NETWORK NAME* and select *FINISH* creating the creating the resource.

Creating Cluster File Share Resources with the WEBUI

- Open the WEBUI and select the Cluster Management Link on the left hand side.
- Select the Resources link under Cluster Management.
- Select *NEW*, select *NEXT*.
- Specify the resource name, description, type and the cluster group where the share will reside. The type will be File Share. Set the resource's group to the name of the Virtual Server group that will host the share. Select *NEXT*.
- Specify the possible nodes. (should be both nodes) Select *NEXT*.
- Specify the dependencies. File shares should be dependent on the Virtual Disk (SCE Pool Resource) that hosts them. Select *NEXT*.
- Specify the parameters for the file share and select *NEXT*.
- Verify the parameters and select *FINISH* to create the resource.

Creating Cluster File Share Resources with Terminal Services

In a cluster configuration file shares must be created in cluster administrator to be cluster aware. To create a cluster aware file share resource:

- Select *FILE->NEW->RESOURCE*
- This will be a File Share resource, type a name for the resource. In the resource type window select *FILE SHARE*. In the Group window select the name of the group desired to create the share in. Make sure a group is selected that contains a physical disk resource. Select *NEXT* to continue.
- Select the possible owners and select *NEXT* to continue. Usually both nodes are set to be possible owners.
- Select the physical disk resource the share will reside on and select *ADD*. Select *NEXT* in the dependencies window to continue.
- Enter the share name and path. Configure the User Limit and permissions for the share. Select *FINISH* creating the file share resource.