



Integrating Compaq Insight Manager with Microsoft Systems Management Server 2.0

TechNote

First Edition (February 1999)
Part Number ECG049/0299
Compaq Computer Corporation

Notice

The information in this publication is subject to change without notice.

COMPAQ COMPUTER CORPORATION SHALL NOT BE LIABLE FOR TECHNICAL OR EDITORIAL ERRORS OR OMISSIONS CONTAINED HEREIN, NOR FOR INCIDENTAL OR CONSEQUENTIAL DAMAGES RESULTING FROM THE FURNISHING, PERFORMANCE, OR USE OF THIS MATERIAL. THIS INFORMATION IS PROVIDED "AS IS" AND COMPAQ COMPUTER CORPORATION DISCLAIMS ANY WARRANTIES, EXPRESS, IMPLIED OR STATUTORY AND EXPRESSLY DISCLAIMS THE IMPLIED WARRANTIES OF MERCHANTABILITY, FITNESS FOR PARTICULAR PURPOSE, GOOD TITLE AND AGAINST INFRINGEMENT.

This publication contains information protected by copyright. No part of this publication may be photocopied or reproduced in any form without prior written consent from Compaq Computer Corporation.

© 1999 Compaq Computer Corporation.

All rights reserved. Printed in the U.S.A.

The software described in this TechNote is furnished under a license agreement or nondisclosure agreement. The software may be used or copied only in accordance with the terms of the agreement.

Compaq, Deskpro, Compaq Insight Manager, ProLiant, ProSignia, registered United States Patent and Trademark Office.

Netelligent trademark and/or service mark of Compaq Computer Corporation.

Microsoft, Windows, and Windows NT are registered trademarks of Microsoft Corporation.

Pentium is a registered trademark and Xeon is a trademark of Intel Corporation.

Other product names mentioned herein may be trademarks and/or registered trademarks of their respective companies.

Integrating Compaq Insight Manager with Microsoft Systems Management Server 2.0
First Edition (February 1999)
Part Number ECG049/0299

Contents

About This TechNote

Text Conventions.....	v
Symbols in Text.....	vi
Getting Help.....	vi
Compaq Technical Support.....	vi
Compaq Website.....	vii
Compaq Authorized Reseller.....	vii

Chapter 1

Overview

This Chapter.....	1-1
Intended Audience.....	1-1
Obtaining More Information.....	1-2
Why Integration Solutions Are Needed.....	1-2
SMS Site Hierarchy.....	1-3

Chapter 2

Compaq Inventory Collector: Features

This Chapter.....	2-1
Introduction.....	2-1
.MIF File Contents.....	2-2
Contents of Individual Inventory Tables.....	2-3
Command Line Options.....	2-11

Chapter 3

Compaq Inventory Collector: Installation and Use

This Chapter.....	3-1
Options for Installation and Use.....	3-2
Using the SMS Login Script	3-2
Using Scheduled SMS Advertisements.....	3-4
Running Collect Manually	3-13
Related Activities	3-14
Viewing the .MIF Files	3-14
Querying SMS Databases.....	3-15

Chapter 4

Compaq Software Distribution Files: Features

This Chapter.....	4-1
Capabilities	4-1
Distribution Programs.....	4-2

Chapter 5

Compaq Software Distribution Files: Use

This Chapter.....	5-1
Distributing Compaq Software Products.....	5-1
Preparing the Site Server	5-2
Creating a Package	5-3
Creating a Query to Target Advertisements.....	5-11
Creating an Advertisement.....	5-12

Appendix A

Obtaining Compaq Software

Locating Source Files for Compaq Products.....	A-1
--	-----

Appendix B

Pre-Installation Requirements

This Appendix	B-1
Supported Hardware Platforms	B-1
Requirements for SMS	B-2
Requirements for Compaq Management Agents	B-3
Requirements for Compaq Integration Solutions	B-3
Requirements for Compaq Inventory Collector	B-4
Requirements for Compaq Software Distribution Files.....	B-5

Index

About This TechNote

This TechNote is designed to be used as step-by-step instructions for installation and as a reference for operation, troubleshooting, and future upgrades.

Text Conventions

This document uses the following conventions to distinguish elements of text:

Keys	Keys appear in boldface. A plus sign (+) between two keys indicates that they should be pressed simultaneously.
USER INPUT	User input appears in a different typeface and in uppercase.
<i>FILENAMES</i>	File names appear in uppercase italics.
Menu Options, Command Names, Dialog Box Names	These elements appear in initial capital letters.
COMMANDS, DIRECTORY NAMES, and DRIVE NAMES	These elements appear in uppercase.
Type	When you are instructed to <i>type</i> information, type the information without pressing the Enter key.
Enter	When you are instructed to <i>enter</i> information, type the information and then press the Enter key.

Symbols in Text

These symbols may be found in the text of this TechNote. They have the following meanings.

IMPORTANT: Text set off in this manner presents clarifying information or specific instructions.

NOTE: Text set off in this manner presents commentary, sidelights, or interesting points of information.

Getting Help

If you have a problem and have exhausted the information in this TechNote, you can get further information and other help in the following locations.

Compaq Technical Support

You are entitled to free hardware technical telephone support for your product for as long you own the product. A technical support specialist will help you diagnose the problem or guide you to the next step in the warranty process.

In North America, call the Compaq Technical Phone Support Center at 1-800-OK-COMPAQ¹. This service is available 24 hours a day, 7 days a week.

Outside North America, call the nearest Compaq Technical Support Phone Center. Telephone numbers for world wide Technical Support Centers are listed on the Compaq website. Access the Compaq website by logging on to the Internet at <http://www.compaq.com>.

Be sure to have the following information available before you call Compaq:

- Technical support registration number (if applicable)
- Product serial number (s)
- Product model name(s) and numbers(s)
- Applicable error messages
- Add-on boards or hardware

¹ For continuous quality improvement, calls may be recorded or monitored.

- Third-party hardware or software
- Operating system type and revision level
- Detailed, specific questions

Compaq Website

The Compaq website has information on this product as well as the latest drivers and Flash ROM images. You can access the Compaq website by logging on to the Internet at <http://www.compaq.com>.

Compaq Authorized Reseller

For the name of your nearest Compaq Authorized Reseller:

- In the United States, call 1-800-345-1518.
- In Canada, call 1-800-263-5868.
- Elsewhere, see the Compaq website for locations and telephone numbers.

Chapter 1

Overview

This Chapter

This chapter provides information on:

- The intended audience for this TechNote
- How to obtain more information on topics discussed in this TechNote
- Why additional solutions are needed to integrate Compaq Management Agents with Microsoft Systems Management Server (SMS) 2.0
- How the SMS site hierarchy is configured

Intended Audience

This TechNote is intended for the use of system integrators and network administrators who are familiar with Compaq system products, Compaq Insight Manager, and Microsoft Systems Management Server 2.0.

Obtaining More Information

For more information on topics discussed in this TechNote, refer to one of these sources:

- *Compaq Insight Manager User Guide* from the Compaq Management CD
- *Compaq Insight Management Agents for Microsoft Windows NT User Guide* from the Compaq Management CD
- *Microsoft Systems Management Server 2.0 for Windows NT Administrator's Guide*
- *Microsoft SQL Server for Windows NT System Administrator's Guide*
- *Microsoft Windows NT Administrator's Guide*

Why Integration Solutions Are Needed

Microsoft Systems Management Server (SMS) 2.0 is a scalable software solution that maximizes network resources by centrally managing the maintenance of hardware and software inventories and by distributing, installing, and metering software packages.

However, SMS is designed to work with many different vendors' products and, as a result, can only obtain generic inventory information. To obtain additional asset information and to facilitate software distribution, Compaq provides these solutions:

- Compaq Inventory Collector: a command line utility that extends the SMS database with Compaq-specific information
- Compaq Software Distribution Files: text files that facilitate the distribution of these software products:
 - Compaq Management Agents
 - Compaq Support Software for Microsoft Windows NT 4.0 (NT4.0 SSD)
 - Compaq Survey Utility

Using these integration solutions, the SMS administrator can collect the inventory of any SMS client or distribute software packages to any SMS client.

SMS Site Hierarchy

Using the Compaq integration solutions requires an understanding of the SMS site hierarchy. This hierarchy can include several site categories:

Table 1-1
SMS Site Categories

Category	Description
Central site	Single SMS site that stores system-wide information in a Microsoft SQL Server database. Manages all other SMS sites.
Primary site	Stores sub-system information in a SMS database. Can manage additional primary or secondary sites. Created by running the SMS setup application.
Secondary site	Stores information in the SMS database of the associated primary site. Manages no additional sites. Created by the associated primary site.
SMS site server	The machine at a particular site that is responsible for managing that site and for channeling all SMS information to and from the site.

NOTE: An SMS site can include one or more domains and may be a parent, a child, or both.

- A parent site contains information on all associated child sites and can manage certain operations at these child sites.
- A child site receives information from and reports information to a parent.

The central site is a parent site.

A primary site is a child site (with the central site or another primary site as parent) and can be a parent site (with secondary sites or other primary sites as child sites).

A secondary site is a child site.

SMS sites are arranged in a hierarchical structure:

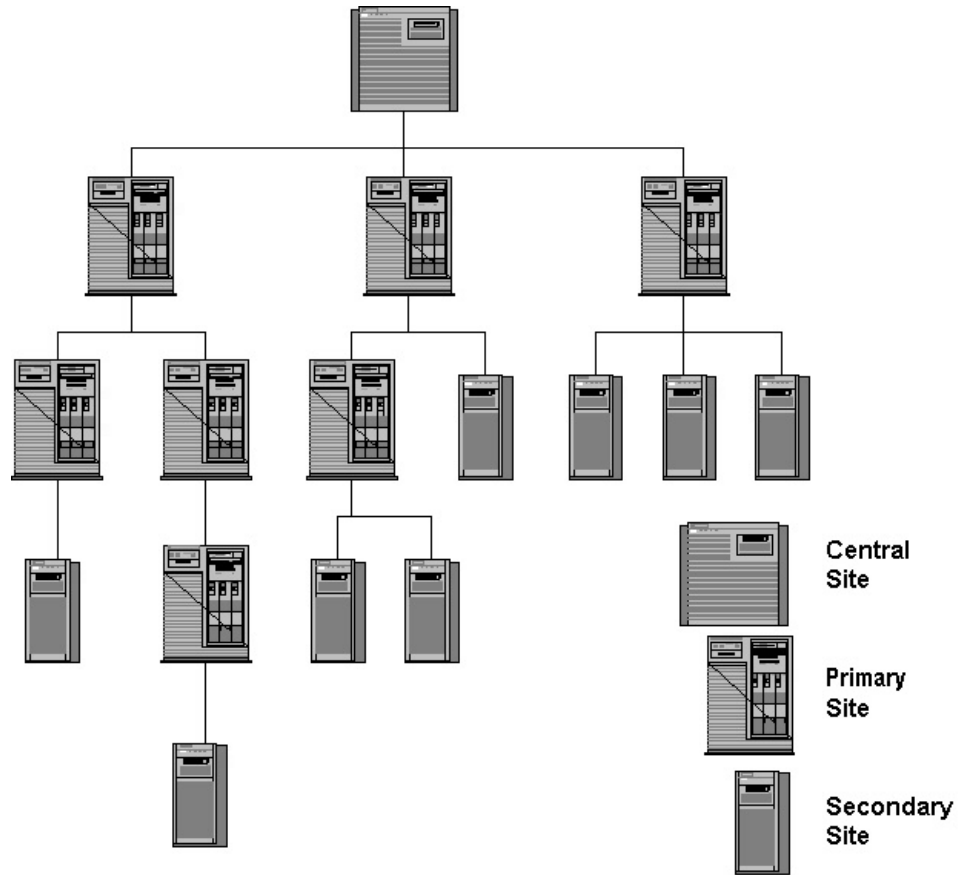


Figure 1-1. Sample SMS site hierarchy

Chapter 2

Compaq Inventory Collector: Features

This Chapter

This chapter provides information on:

- The features of Compaq Inventory Collector (Collect)
- The contents of the .MIF files created by Collect
- The Collect command line options

Introduction

Compaq Inventory Collector (also known as Collect) is a command line utility that uses Compaq Management Agents to obtain Compaq-specific hardware information from Systems Management Server (SMS) 2.0 client sites and add this information to the site server's SMS database. The information can be viewed or queried and will automatically update the inventory information in the central site's SQL Server database.

Collect runs on each specified client creating a series of intermediate Management Information Format (.MIF) text files that contain inventory information on the particular client. The client SMS inventory agent reads these files and outputs a single .MIF file to the site server so that the appropriate database can be updated.

Each Compaq *.MIF* file includes one or more tables listing specific inventory information.

.MIF File Contents

By default, the *.MIF* files are named *COMPAQ0.MIF* – *COMPAQ10.MIF*. Each file contains one or more inventory tables:

Table 2-1
Contents of *.MIF* files

Filename	Inventory Table
<i>COMPAQ0.MIF</i>	<ul style="list-style-type: none"> ■ CPU Attributes ■ EISA/PCI Slots ■ System Attributes ■ Memory Module Attributes ■ Portable Batteries ■ Portable Docking Station ■ Portable PC Card Slots
<i>COMPAQ1.MIF</i>	<ul style="list-style-type: none"> ■ IDE Devices
<i>COMPAQ2.MIF</i>	<ul style="list-style-type: none"> ■ Video Monitor
<i>COMPAQ3.MIF</i>	<ul style="list-style-type: none"> ■ Health Subsystem
<i>COMPAQ4.MIF</i>	<ul style="list-style-type: none"> ■ Drive Array Controller ■ Drive Array Logical Drive ■ Drive Array Physical Drive
<i>COMPAQ5.MIF</i>	<ul style="list-style-type: none"> ■ UPS Attributes
<i>COMPAQ6.MIF</i>	<ul style="list-style-type: none"> ■ Storage System Attributes
<i>COMPAQ7.MIF</i>	<ul style="list-style-type: none"> ■ SCSI Devices
<i>COMPAQ8.MIF</i>	<ul style="list-style-type: none"> ■ Software Version Information

continued

Table 2-1
Contents of .MIF files *continued*

Filename	Inventory Table
<i>COMPAQ9.MIF</i>	■ Remote Insight Board Information
<i>COMPAQ10.MIF</i>	■ Fibre Channel Array Controller
	■ Fibre Channel Array Logical Drive
	■ Fibre Channel Array Physical Drive
	■ Fibre Channel Host Controller
	■ Cluster Node Information
	■ Cluster Interconnect Information

NOTE: Table entries depend on the hardware installed on the particular client. For example, if the client is a server, the table for Portable Batteries will be omitted.

See below for the contents of each inventory table.

Contents of Individual Inventory Tables

The information contained in each inventory table is:

Table 2-2
Inventory Table Contents

Filename	Inventory Table	Type	Description
<i>COMPAQ0.MIF</i>	CPU Attributes	CPU Number	Position of particular processor (1–4)
		CPU Type	Class of Intel processor, for example: 80486 or Pentium
		CPU Speed	CPU speed in MHz as determined by the Compaq Management Agents
		L2 Cache	Level 2 cache capacity
		L3 Cache	Level 3 cache capacity

continued

Table 2-2
Inventory Table Contents *continued*

Filename	Inventory Table	Type	Description
COMPAQ0.MIF	EISA/PCI Slots	Slot Number	Slot where the particular board is installed
		Board EISA/PCI ID	Board ID; typically three characters to denote the vendor followed by an alphanumeric ID
		Board Name	Vendor's name for the board; formatted per EISA/PCI specifications
		Board Revision	Revision level of the board
	System Attributes	Product Name	Full name of the system, for example Compaq ProLiant 7000
		Flash ROM	Flash ROM installed (YES/NO)
		System Partition	Compaq Utilities partition present (PRESENT/NONE)
		System ROM revision	Revision level of the ROM installed on the system board
		Serial Number	Serial number of Compaq system
		Asset Tag	User-selected string; defaults to Serial Number
		Total System Memory	Memory installed on a Deskpro
		Hood Removal	Date Deskpro's hood removed
		Hot Plug PCI	Hot Plug PCI bus support (YES/NO)
		Ownership Tag	ASCII character string describing system's user-specified ownership tag
ROM Family	Family type of system ROM		

continued

Table 2-2
Inventory Table Contents *continued*

Filename	Inventory Table	Type	Description
COMPAQ0.MIF	Memory Module Attributes	Board/Module Number	Location of particular module; listed first by memory board number then module number
		Module Size	Module size in MB
		Module Type	Module type, for example: SIMM
		Module Speed	Module memory speed, for example: 80ns
		Memory Error Checking Type	Error checking method used, for example: EDO
		Technology Type	Module memory technology, for example: FPM
		Serial Number	Module serial number
		Part Number	Module part number
		Manufacturer	Module manufacturer
		Manufacture Date	Date of manufacture of module
	Portable Batteries	Index	Index of the particular battery
		Manufacturer	Battery manufacturer
		Date	Battery manufacture date
		Serial Number	Battery serial number
		Asset Tag	Asset tag of battery
		Chemistry	Battery chemistry, for example: lithium
	Portable Docking Station	Dock Status	Dock status (DOCKED/UNLOCKED)
		Model Name	Model name of attached docking station
		Serial Number	Serial number of docking station
		Asset Tag	Asset tag of docking station
		ROM Revision	Revision date of the docking station ROM

continued

Table 2-2
Inventory Table Contents *continued*

Filename	Inventory Table	Type	Description
<i>COMPAQ0.MIF</i>	PC Card Slots	Index	Index of the particular slot
		Slot Location	Physical slot location
		Card Presence	Card installed (YES/NO)
		Card Status	Operational status of the installed card
		Manufacturer Name	Card manufacturer
		Device Name	Card name
<i>COMPAQ1.MIF</i>	IDE Devices	Controller/Drive	Slot number and ID for the IDE controller
		Name	Name of the IDE device, for example: Compaq 2105
		Type	Type of IDE device, for example: disk
		Firmware Revision	Revision level of IDE device firmware
		Disk Size	Size of the IDE disk
		Serial Number	Serial number of the IDE device
<i>COMPAQ2.MIF</i>	Video Monitor	Description	Type of monitor
		Name	Model name
		Serial Number	Serial number of monitor
		Horizontal Pixels	Maximum horizontal pixel resolution
		Vertical Pixels	Maximum vertical pixel resolution
		Frequency Range	Horizontal and vertical frequency range supported by the monitor
		Fault Management Support	Presence of fault management support (YES/NO)
		Manufacturer ID	Manufacturer of the monitor
EDID Version	EDID version used by the monitor		

continued

Table 2-2
Inventory Table Contents *continued*

Filename	Inventory Table	Type	Description
COMPAQ3.MIF	Health Subsystem	ASR Status	Status of Automatic Server Recovery-2 (ENABLED/DISABLED)
		ASR Reboot To	How the system will reboot following an ASR-2 event (OPERATING SYSTEM/COMPAQ UTILITIES)
		Pager Status	Status of ASR-2 paging (ENABLED/DISABLED)
		Pager Number	Number called by server when initiating a paging event
COMPAQ4.MIF	Drive Array Controller	Model	Drive array model, for example; SMART array
		FW Revision	Revision level of drive array controller firmware
		Slot	Slot number of drive array controller
	Drive Array Logical Drive	Index	Index of the particular logical drive
		Controller Slot	Slot of drive array controller with which logical drive associated
		Drive Size	Size of the logical drive
		Fault Tolerance	Type of fault tolerance used by the logical drive, for example: RAID 5
	Drive Array Physical Drive	Physical Drives	List of physical drives included in the logical drive
		Slot/Bay/Port	Slot number of the controller; port used by the physical drive; drive bay containing the drive
		Model	Model of physical drive, for example: Compaq M2694ES-512
		Firmware Revision	Revision level of drive firmware
		Drive Size	Size of physical drive
		Hot Pluggable	Specifies if drive is hot-pluggable (YES/NO)
	Serial Number	Serial number of the drive	

continued

Table 2-2
Inventory Table Contents *continued*

Filename	Inventory Table	Type	Description
<i>COMPAQ5.MIF</i>	UPS Attributes	Model	UPS model name
		Serial Number	UPS serial number
		Auto Shutdown Delay	Time in minutes UPS waits before shutting down after power loss
<i>COMPAQ6.MIF</i>	Storage System Attributes	Index	Index of the particular storage system
		Model	Storage system model, for example: ProLiant 1-5E
		Controller Slot	Slot number of storage system controller
		SCSI Bus Index	SCSI index of storage system
		FW Revision	Revision level of storage system firmware
		Vendor	Storage system vendor
<i>COMPAQ7.MIF</i>	SCSI Devices	Controller Slot/SCSI ID	Slot number and SCSI ID of the SCSI controller
		Name	Compaq name for the SCSI device, for example: Compaq 2105
		Type	Type of SCSI device, for example: disk
		Firmware Revision	Revision level of SCSI device firmware
		Bus width	SCSI bus width, for example: 8 bits
		Disk Size	SCSI disk size
		Hot Pluggable	Specifies if device is hot-pluggable (YES/NO)
		Serial Number	Serial number of the SCSI device
<i>COMPAQ8.MIF</i>	Software Version Information	Name	Name of the .EXE, .SYS, or utility program that runs the particular Compaq software product
		Description	Text description of the software, for example: Compaq Insight Management Service
		Version	Software version

continued

Table 2-2
Inventory Table Contents *continued*

Filename	Inventory Table	Type	Description
<i>COMPAQ9.MIF</i>	Remote Insight Board Information	Serial Number	Serial number of the Remote Insight Board
		Firmware Revision	Firmware revision of the Remote Insight Board
		Video Status	Status of the video (ENABLED/DISABLED)
		Keyboard Status	Status of the keyboard (ENABLED/DISABLED)
		Alert Status	Status of the alerts (ENABLED/DISABLED)
		Battery Status	Status of the battery (ENABLED/DISABLED)
<i>COMPAQ10.MIF</i>	Fibre Channel Array Controller	Model	Fibre Channel Array Controller model
		Firmware Revision	Firmware revision of Fibre Channel Array Controller
		Serial Number	Serial number of Fibre Channel Array Controller
		Storage Box I/O Slot	Physical slot within storage box where Fibre Channel Array Controller installed
	Fibre Channel Array Logical Drive	Storage Box Index	Index of storage box where logical drive installed
		Logical Drive Index	Index of logical drive within a storage box
		Logical Drive Fault Tolerance Mode	Fault tolerance mode of the logical drive
		Logical Drive Size	Size in MB of the logical drive
		List of Physical Drives	List of physical drive IDs associated with the logical drive
		Accelerator Status	Status of the accelerator (ENABLED/DISABLED)

continued

Table 2-2
Inventory Table Contents *continued*

Filename	Inventory Table	Type	Description
COMPAQ10.MIF	Fibre Channel Array Physical Drive	Storage Box Index	Index of storage box where physical drive resides
		Physical Drive Index	Index of physical drive NOTE: With Storage Box Index, this uniquely identifies a specific physical drive
		Drive Model	Text description of the physical drive
		Drive Size	Size in MB of the physical drive
		Firmware Revision Level	Firmware revision level of the physical drive
		Serial Number	Serial number of the physical drive
	Fibre Channel Host Controller	Host Controller Slot	Identifies physical slot where Compaq Fibre Channel Host Controller resides
		Model	Model name of controller card
		WorldWide Name	User-specified string that can be used to further identify the controller card
	Cluster Node Information	Cluster Name	Name of cluster to which this node belongs
		Cluster IP Address	Static IP address of cluster
		Cluster Node	Node name
	Cluster Interconnect Information	Interconnect Physical ID	Physical device identification
Interconnect Transport		Network transport used by the interconnect, for example: TCP/IP	
Interconnect Address		Address used by the interconnect	

Command Line Options

Collect is a command line utility that allows the user to specify options for obtaining Compaq-specific hardware information from SMS clients. These options allow the SMS administrator to specify:

- The name(s) of the *.MIF* file(s) to be created by the client
- The SMS directory where the client places the *.MIF* file(s)

NOTE: If this directory is not specified, Collect outputs the inventory tables to the screen.

- The items to be inventoried

NOTE: If the items are not specified, Collect will perform a complete inventory.

- The Collect help screen

The command line options are:

Table 2-3
Command Line Options

Option	Name	Description	Tables Collected
/F	Output File	Specifies the name of the single <i>.MIF</i> file (<i>Output File.MIF</i>) created by the client. The default filename is <i>COMPAQ.MIF</i> . This output file includes all requested inventory tables. NOTE: Do not use this option with /M.	
/H	Server Health	Collects Server Health information.	Health Subsystem
/I	Drive Array	Collects Drive Array information.	All Drive Array tables
/M	Multiple	Creates multiple output files named <i>COMPAQ0.MIF – COMPAQ10.MIF</i> .	
/SC	SCSI	Collects SCSI information.	SCSI Devices
/SE	Standard Equipment	Collects standard equipment information.	System Attributes

continued

Table 2-3
Command Line Options *continued*

Option	Name	Description	Tables Collected
/SMS20	SMS 2.0	Places the <i>.MIF</i> file(s) in the SMS 2.0 NOIDMIF directory on the client machine. NOTE: Requires either /F or /M	
/SMS	SMS	Places the <i>.MIF</i> file(s) in the SMS 1.2 NOIDMIF directory on the client machine. NOTE: Requires either /F or /M	
/SS	Storage System	Collects storage system information.	Storage System Attributes
/SW	Software Version	Collects software version information.	Software Version Information
/U	UPS	Collects UPS information.	UPS Attributes
/?	Help	Displays the Collect Help screen.	

The command line syntax is:

```
COLLECT [[/M /SMS20|/SMS] /F outfile
[/H|/I|/SC|/SE|/SS|/SW|/U] |[/?]]
```

The default command line is typically:

```
COLLECT /M /SMS20
```

This places the resulting *.MIF* files in the appropriate client directory so that SMS can update the database with Compaq-specific inventory information.

Chapter 3

Compaq Inventory Collector: Installation and Use

This Chapter

This chapter includes information on:

- The options for installing and using Compaq Inventory Collector (Collect):
 - Using the Microsoft Systems Management Server(SMS) 2.0 login script
 - Using a scheduled SMS advertisement
 - Running Collect manually
- Related activities:
 - Viewing *.MIF* files
 - Querying SMS databases

Options for Installation and Use

IMPORTANT: To identify applicable pre-installation requirements, see Appendix B, "Pre-Installation Requirements."

There are three options for installing and using Collect:

- Using an existing SMS login script to collect the inventory of a particular client
- Issuing SMS advertisements from the site server to schedule inventory collections from specified clients
- Running Collect manually to collect the inventory of a particular client

Each of these options is discussed below.

Using the SMS Login Script

The SMS administrator can add Collect to the login script of a particular client so that this client's inventory is collected automatically when the login script is run.

Use this procedure:

1. Copy *COLLECT.EXE* to the site server directories that contain the login script. By default, the login script is named *SMSLS.BAT* and is contained in these directories:
 - %WINNT_ROOT%\SYSTEM32\REPL\EXPORT\SCRIPTS
 - %WINNT_ROOT%\SYSTEM32\REPL\IMPORT\SCRIPTS

NOTE: For information on obtaining *COLLECT.EXE*, see Appendix A, "Obtaining Compaq Software."

2. Modify the login script in each directory. Add the lines shown underlined:

```

...

if not exist %SMS_LOCAL_DIR%\MS\SMS\CORE\BIN\SMSBOOT1.EXE
goto USER

collect /m /sms20

goto END

...

:USER

if %SMS_LOCAL_DIR_USER%.==.goto SERVER

if not exist %SMS_LOCAL_DIR_USER%\MS\SMS\CORE\BIN\
SMSBOOT1.EXE goto SERVER

collect /m /sms20

%SMS_LOCAL_DIR_USER%\MS\SMS\CORE\BIN\SMSBOOT1.EXE -S %0 -N
-WINDR=%WINDIR%

goto END

...

:SERVER

collect /m /sms20

%0\..\SMSBOOT1.EXE -S %0 -N -WINDR=%WINDR%

goto END ...

```

These modifications allow Collect to execute each time the login script runs.

Using Scheduled SMS Advertisements

The SMS administrator can schedule a repeating SMS advertisement from the SMS Administrator console to collect inventory information simultaneously from multiple target machines. Use this procedure:

1. Create a directory on the site server to hold Collect.
2. Copy *COLLECT.EXE* to the new directory. For information on obtaining *COLLECT.EXE*, see Appendix A, "Obtaining Compaq Software."
3. Create a new SMS package to schedule Collect:
 - a. From the Collect Package Properties window, select the Data Source tab.

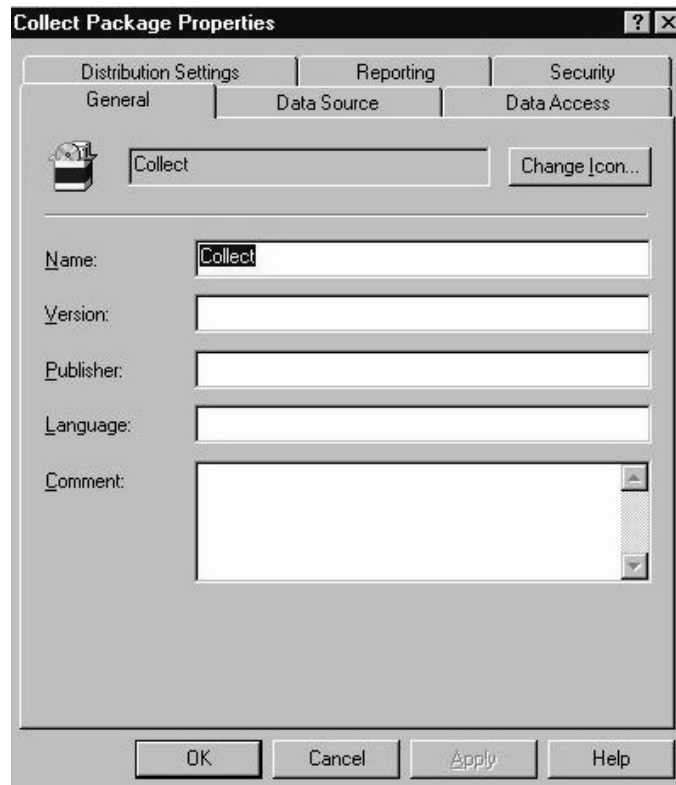


Figure 3-1. The Collect Package Properties window

- b. Check the “This package contains source files” check box in the Data Source tab.

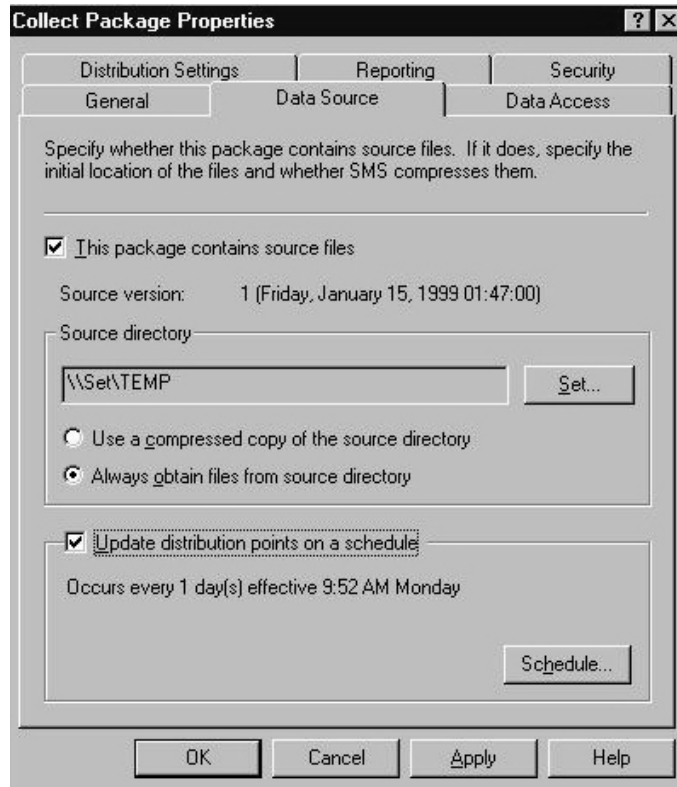


Figure 3-2. The contents of the Data Source tab

- c. Specify the name of the new directory as the source directory.
- d. To make sure that SMS always uses the latest version of Collect , check the “Always obtain files from source directory” and “Update distribution points on a schedule” check boxes.

IMPORTANT: It is the SMS administrator’s responsibility to make sure that the version of Collect in the source directory is updated as required. All clients running the advertisement after the update will use the new version.

- e. If the SMS administrator never expects to update the current version of Collect, select the “Use a compressed copy of the source directory” option, if required.
- f. Select OK.

4. Specify the Collect command line:

- a. From the SMS Administrator console, expand the package just created.

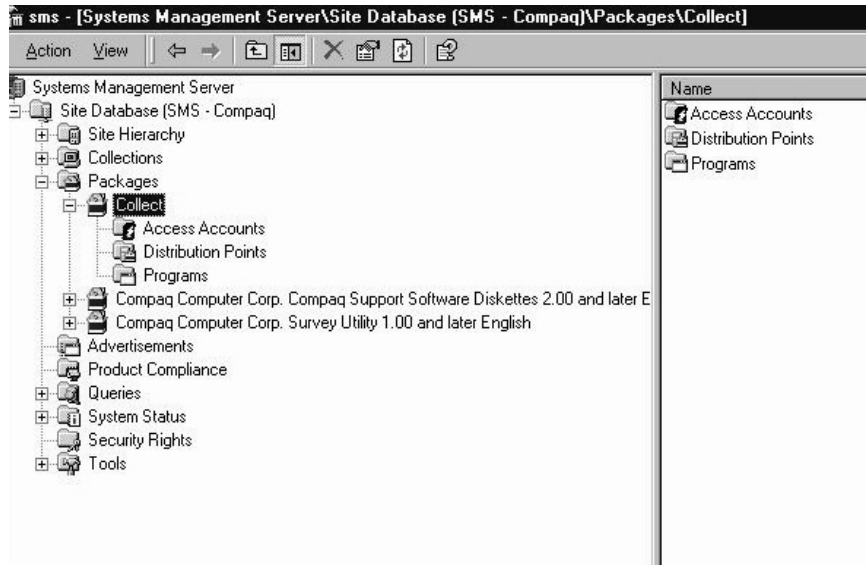


Figure 3-3. Expanding the new package

- b. Right-click on the Programs item; select New from the resulting drop-down menu. Select the Program item to obtain the Run Collect Program Properties window.

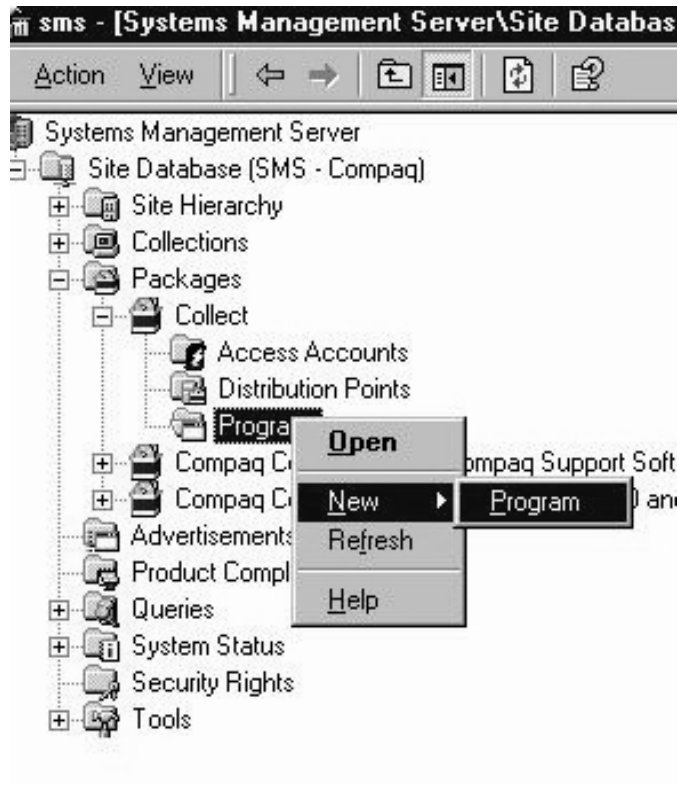


Figure 3-4. Obtaining the Collect Program Properties window

- c. In the General tab, specify a name for the command line; specify the command line.

NOTE: The default command line is: COLLECT /M /SMS20. For information on command line options, see Chapter 3, "Compaq Inventory Collector: Features."

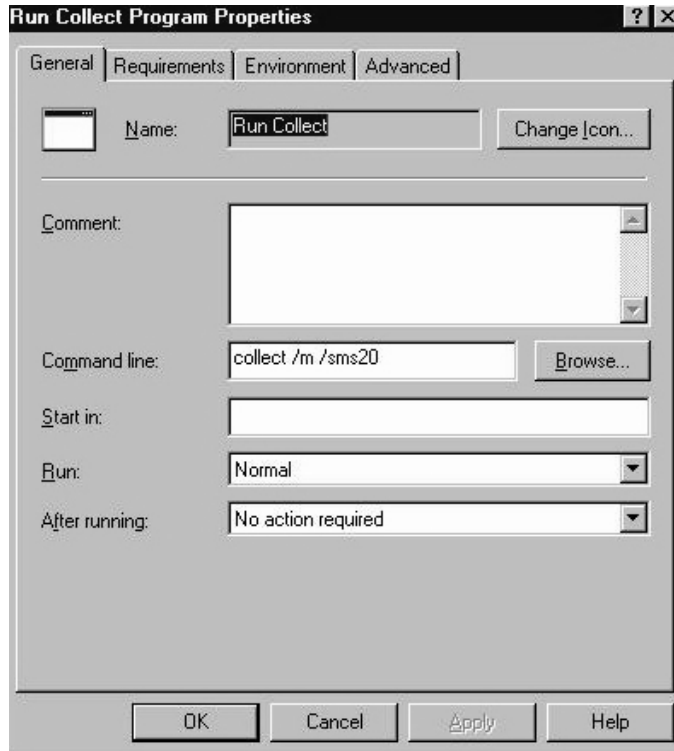


Figure 3-5. Specifying the Collect command line

- d. To enable Collect to run from the client whether or not a user is logged on, select the appropriate option from the Program Can Run list box in the Environment tab.

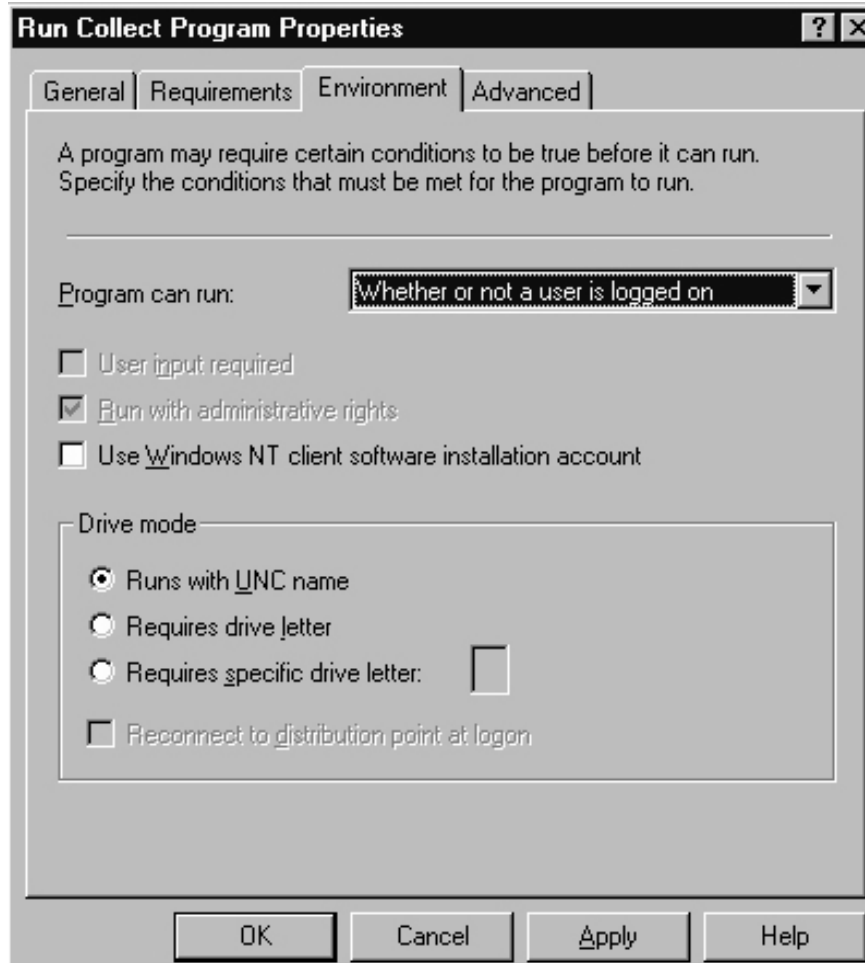


Figure 3-6. Selecting the "Whether or not a user is logged on" option

- e. In the Requirements tab, select the client platforms on which Collect will run when scheduled. Select these options: All Win98 Clients, All Win9x Clients, All x86 NT 3.51 Clients, and All x86 NT 4.0 Clients.

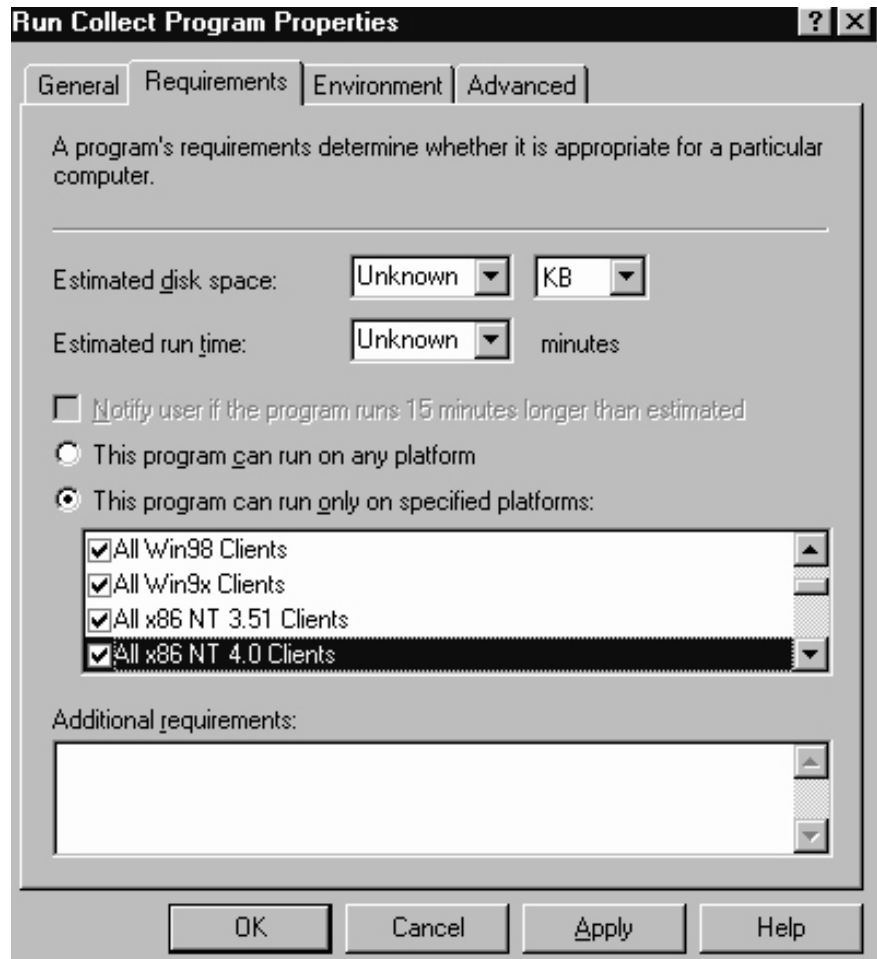


Figure 3-7. Selecting the client platforms on which Collect will run

5. Create an advertisement to distribute Collect to the target machines:
 - a. From the SMS Administrator console, right-click on the Advertisements icon.
 - b. Select New.
 - c. Select Advertisement.

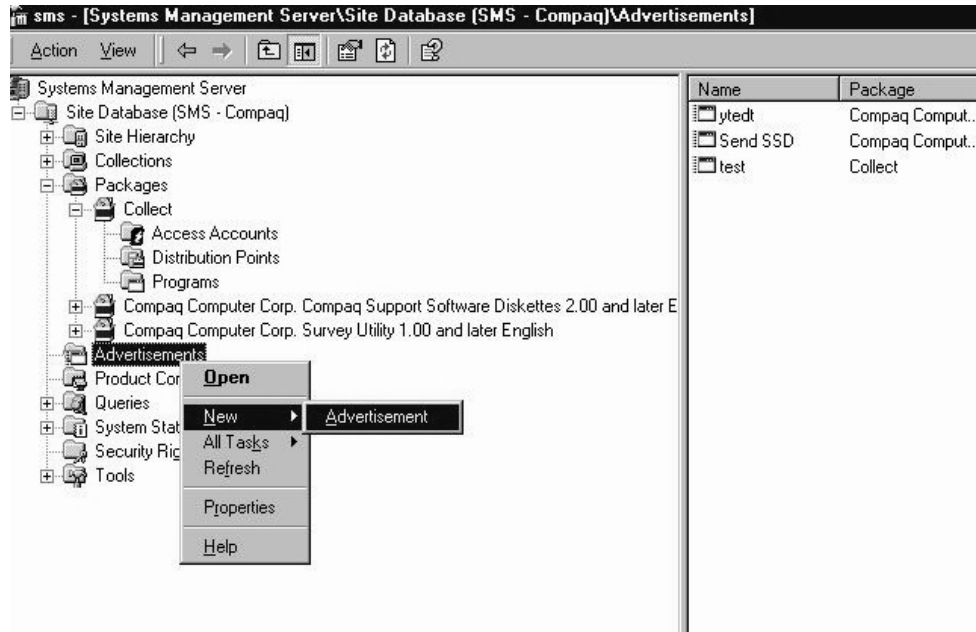


Figure 3-8. Obtaining the Advertisement Properties window

6. To schedule regular executions of Collect, create a mandatory schedule under the Schedule tab of the SMS Advertisement Properties window.

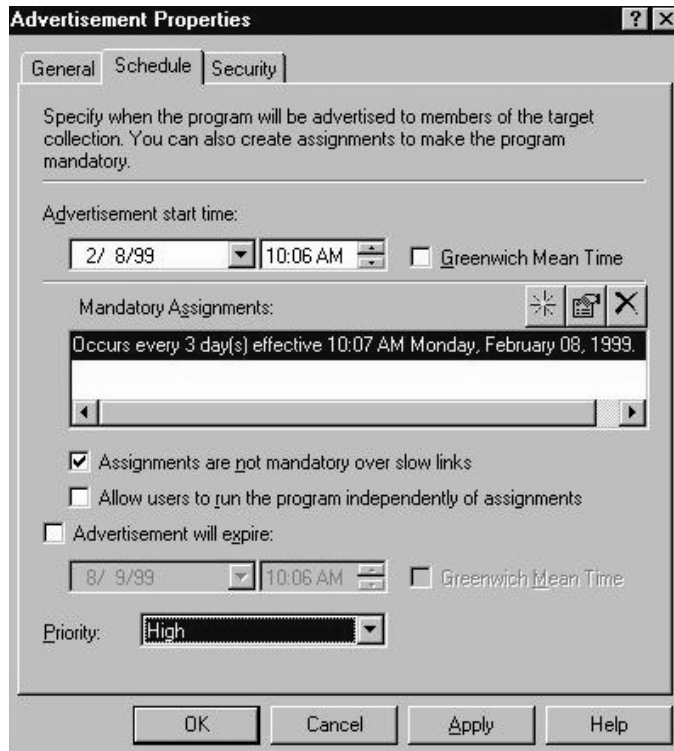


Figure 3-9. Creating a mandatory schedule

Running Collect Manually

At a smaller site, it may be convenient to run Collect directly from a client machine. Use this procedure:

1. Create a directory on the local hard drive to hold Collect.
2. Copy *COLLECT.EXE* to the new directory. For information on obtaining *COLLECT.EXE*, see Appendix A..
3. Switch to the new directory.
4. Run Collect from the command line.

NOTE: The default command line is: `COLLECT /M /SMS20`. For information on command line options, see Chapter 3, "Compaq Inventory Collector: Features."

5. Log in to a domain managed by SMS so that the *.MIF* files created by Collect can be read by SMS at the next scheduled hardware inventory period.

Related Activities

After installing and executing Collect, the SMS administrator can perform other related operations:

- Viewing *.MIF* files
- Querying SMS databases

Viewing the *.MIF* Files

The information contained in the *.MIF* files created by Collect can be viewed in the Resource Explorer window at the SMS Administrator console.

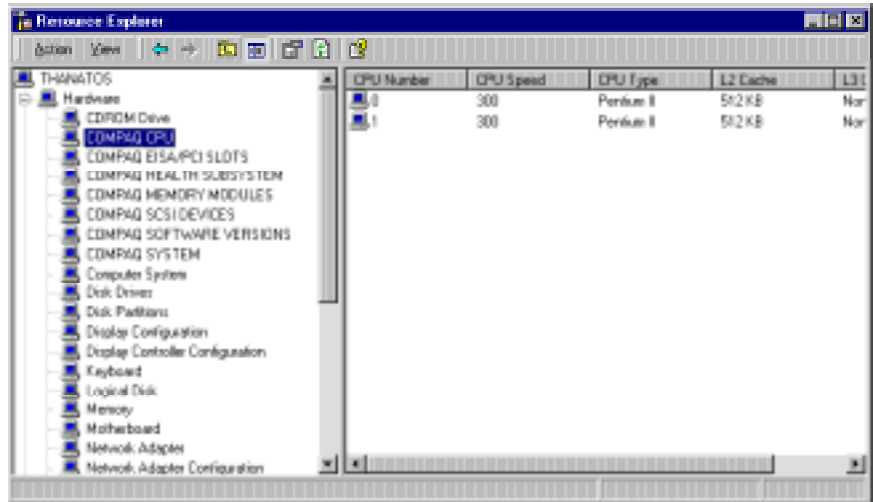


Figure 3-10. Sample Resource Explorer window

In the above example, the following Compaq-specific inventory information is displayed:

Table 3-1
Example of Viewing .MIF Files

Hardware Component	.MIF File	Table
COMPAQ CPU	COMPAQ0.MIF	CPU Attributes
COMPAQ EISA/PCI SLOTS	COMPAQ0.MIF	EISA/PCI Slots
COMPAQ HEALTH SUBSYSTEM	COMPAQ3.MIF	Health Subsystem
COMPAQ MEMORY MODULES	COMPAQ0.MIF	Memory Module Attributes
COMPAQ SCSI DEVICES	COMPAQ7.MIF	SCSI Devices
COMPAQ SOFTWARE VERSIONS	COMPAQ8.MIF	Software Version Information
COMPAQ SYSTEM	COMPAQ0.MIF	System Attributes

For more information on the inventory information contained in .MIF files, see Chapter 3, “Compaq Inventory Collector: Features.”

Querying SMS Databases

After the Compaq-specific inventory information has been added to an SMS database, the SMS administrator can query this information in the same manner as generic inventory information.

Chapter 4

Compaq Software Distribution Files: Features

This Chapter

This chapter includes information on:

- The capabilities of Compaq Software Distribution Files
- The software distribution programs contained in the Compaq Software Distribution Files

Capabilities

Since the task of configuring software packages and advertisements can be manually intensive, Microsoft Systems Management Server (SMS) 2.0 features a flexible software distribution mechanism that uses *.SMS* text files to facilitate the creation of software packages.

Compaq has created additional *.SMS* files to distribute these Compaq software products for Microsoft Windows NT 4.0:

- Compaq Management Agents for NT Server
- Compaq Support Software (Compaq NT SSD)
- Compaq Survey Utility for NT

Each *.SMS* file includes programs that provide the SMS administrator with options for distributing and installing the particular software product.

Distribution Programs

The distribution programs contained in the Compaq Software Distribution Files (*.SMS*) are:

Table 4-1
Distribution Options

Software Product	Program	Description
Compaq Management Agents	Manual Install of Agents	Launches the Compaq Management Agents setup program then waits for user input. Does not perform a reboot on completion.
	Auto Install of Agents	Performs an automated install or upgrade of Compaq Management Agents. Does not perform a reboot on completion. NOTE: A user must be logged on at the target machine but no user input is required during the installation.
Compaq Support Software	Manual Driver Install for SSD	Launches the Compaq NT SSD setup program then waits for user input. Does not perform a reboot on completion.
	Automated Driver Install for SSD	Performs an automated install of Compaq NT SSD on a target server. Checks for new hardware, adds new drivers, and updates existing drivers. Does not perform a reboot on completion.
	Automated Driver Install and Reboot for SSD	Performs an automated install of Compaq NT SSD on a target server. Checks for new hardware, adds new drivers, and updates existing drivers. Performs a reboot on completion.

continued

Table 4-1
Distribution Options *continued*

Software Product	Program	Description
Compaq Support Software	Automated Driver Refresh for SSD	Performs an automated refresh of Compaq NT SSD on a target server. Updates all existing drivers. Does not perform a reboot on completion.
	Automated Driver Refresh and Reboot for SSD	Performs an automated refresh of Compaq NT SSD on a target server. Updates all existing drivers. Performs a reboot on completion.
Compaq Survey Utility	Survey Utility	Installs the Compaq Survey Utility on the target server. Configures the Survey service entry and takes a snapshot of the server. By default, this utility is re-run every Wednesday at 12 a.m.

IMPORTANT: The SMS administrator should take care when specifying Auto Install of Agents because installation failure can occur.

The Microsoft Windows NT *SETUP.EXE* application is used to install the Compaq Management Agents. This application opens windows during the installation process which can lead to unpredictable results during a background install.

The end-user can avoid this potential problem by running a password-protected screen saver during an automated installation or by making sure that qualified personnel are available to carry out a manual installation when the software advertisement arrives.

Compaq Software Distribution Files: Use

This Chapter

This chapter provides information on using Compaq Software Distribution Files to distribute Compaq software products.

Distributing Compaq Software Products

The process for using Microsoft Systems Management Server (SMS) 2.0 to distribute Compaq software products includes:

- Preparing the site server
- Creating a package for the software
- Creating queries to target the distribution to specific clients
- Creating the advertisement to distribute the software

IMPORTANT: To identify applicable pre-installation requirements, see Appendix B, "Pre-Installation Requirements."

See below for information on each of these stages.

Preparing the Site Server

To prepare the site server for software distribution, Compaq recommends creating a source directory on the SMS site server and copying the appropriate files to this directory.

NOTE: Since SMS can obtain software product source files and *.SMS* files from any share available on the network, these steps are not strictly necessary.

For information on where to obtain product source files and *.SMS* files, see Appendix A, "Obtaining Compaq Software."

Use this procedure to prepare the site server:

1. Create a source directory on the SMS site server.
2. Copy the appropriate *.SMS* file to the source directory.
3. Copy the source files for the software product to be distributed to the source directory.

IMPORTANT: Make sure that the appropriate version of the software product is copied:

- Compaq Management Agents 3.0 or later
- Compaq NT SSD 1.18 or later
- Compaq Survey Utility 1.0 or later

For information on obtaining software products, see Appendix A, "Obtaining Compaq Software."

Creating a Package

After preparing the site server, use the Create Package from Definition wizard to create a package for the software product to be distributed:

1. To invoke the wizard:
 - a. Right-click on Packages on the SMS administrator console.
 - b. Select New.
 - c. Select Package from Definition.

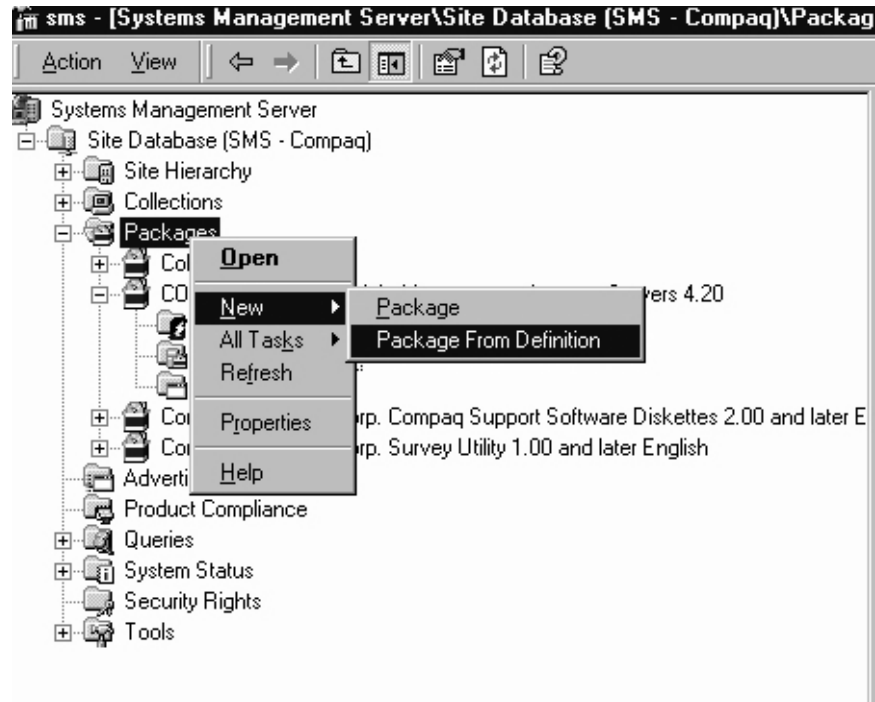


Figure 5-1. Invoking the Create Package from Definition wizard

2. Select Next to start the Create Package from Definition wizard.



Figure 5-2. The Create Package from Definition wizard

3. Use the Browse feature to select the directory where the .SMS file for the particular software product is located.

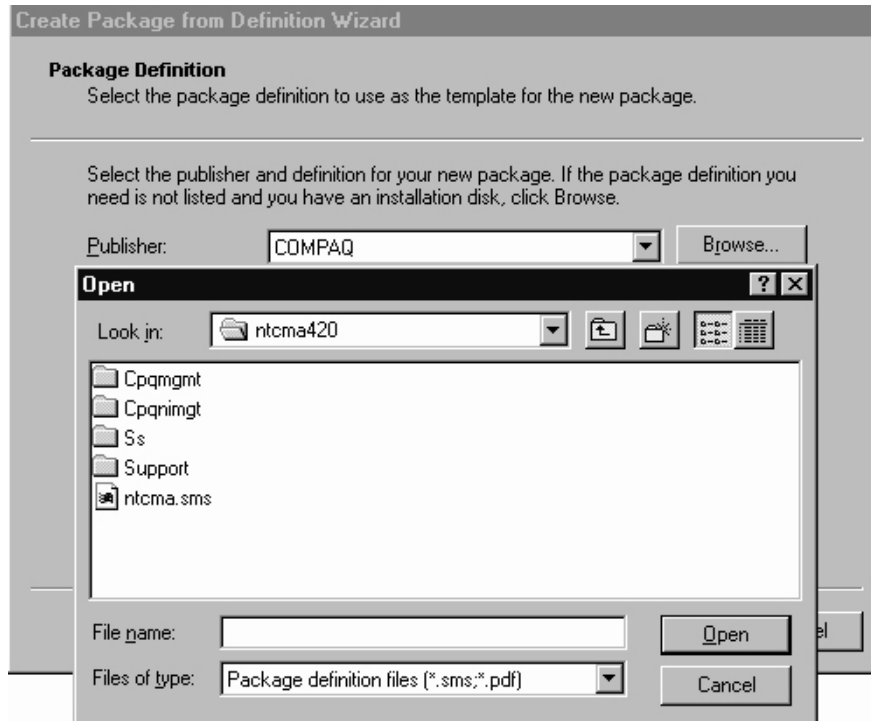


Figure 5-3. Selecting the .SMS file

4. Identify the Compaq software product to be distributed.

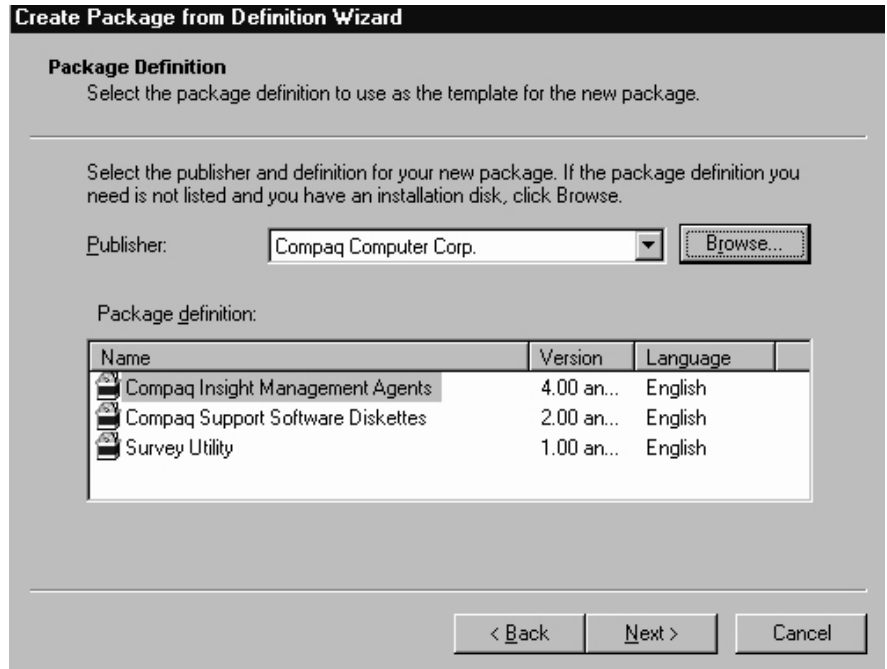


Figure 5-4. Selecting the Compaq software product to be distributed

5. Specify how SMS will manage the source files:

- If the files will always be available in a source directory, select the “Always obtain files from a source directory” option.

IMPORTANT: It will be the SMS administrator’s responsibility to make sure that the files in the source directory are updated as required so that clients running this advertisement always receive the latest versions of the files.

- If the source files will never be updated, select the “Create a compressed version of the source” option.
- If the advertisement consists of a command line but no source files, select the “This package does not contain any files” option.

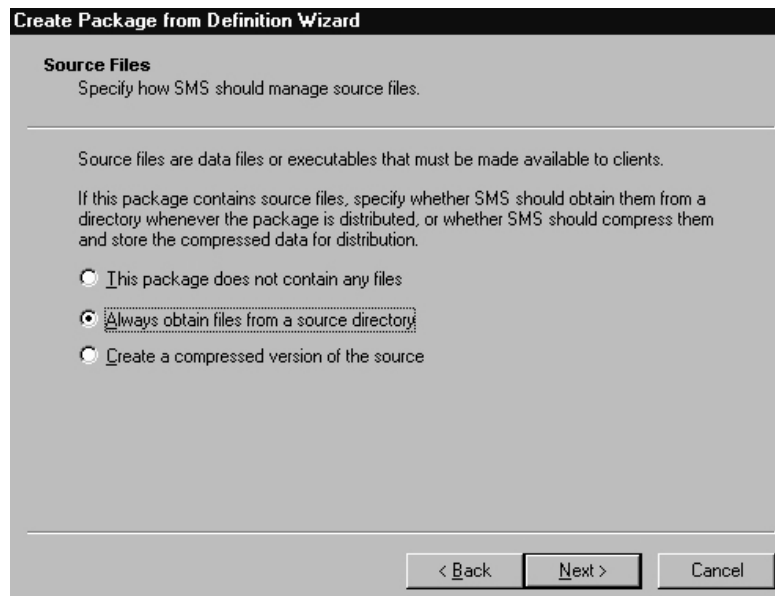


Figure 5-5. Managing the source files

6. Identify the directory containing the product source files. Typically these files are located on the SMS site server.

The screenshot shows a wizard window titled "Create Package from Definition Wizard". The current step is "Source Directory", which asks the user to "Specify the directory containing the source files for this package." Below this, a note states: "Make sure that this directory is accessible to the SMS Service Account for as long as the package exists." The "Package:" field contains "Compaq Insight Management Agents - Servers". Under "Source directory location:", the "Network path (UNC name)" radio button is selected. The "Source directory:" field contains the UNC path "\\Set\cpqsoftware\ntcma420", and a "Browse..." button is visible to its right. Below the field, the syntax "\\servername\sharename\path" is provided. At the bottom of the dialog are three buttons: "< Back", "Next >", and "Cancel".

Figure 5-6. Identifying the directory that contains the source files

7. Select Next.
8. Select Finish to exit the Create Package from Definition wizard.

9. After creating the package, start the New Distribution Points wizard to specify which SMS distribution points will receive the package..

NOTE: Clients receive the package from one of the configured distribution points.

- a. Right-click on the new package on the SMS Administrator console.
- b. Select New.
- c. Select Distribution Points.

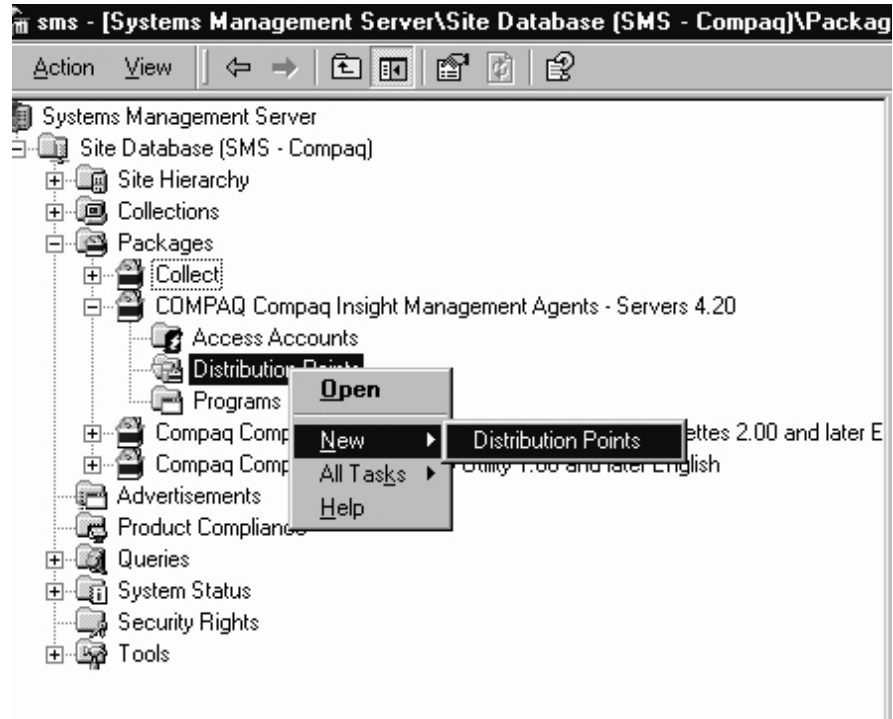


Figure 5-7. Obtaining the New Distribution Points wizard

10. Select the distribution points for the new package.

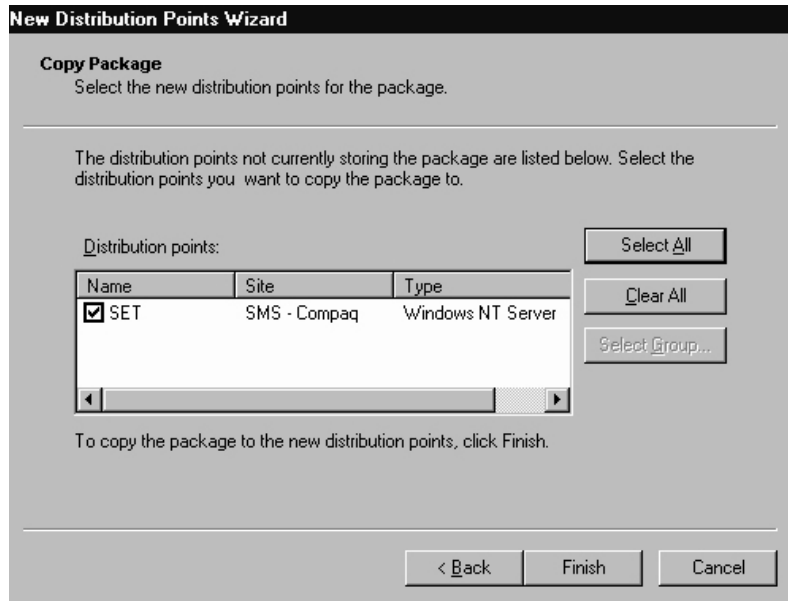


Figure 5-8. Selecting the distribution points

Creating a Query to Target Advertisements

Any information in the SMS database (including the Compaq-specific information obtained by Compaq Inventory Collector) can be the subject of a query. The SMS administrator can use the results of a query (known as a collection) to target software advertisements to specific machines.

If the SMS administrator is distributing a software package to a large number of clients, it may be advisable to break the distribution into a series of smaller waves to ease the burden on the network and distribution points. To achieve this, the SMS administrator can:

- Create queries to target different groups of clients: for example, clients requiring a manual install and those requiring an automatic install.
- Schedule advertisements to run at different times.

For information on creating queries, refer to *Microsoft Systems Management Server 2.0 Administrator's Guide*.

Example of the Use of Queries

To spread the distribution load on the network over a longer period, the SMS administrator can:

- Create a query to send a manual install to machines that are operated by knowledgeable users and an additional query to target machines where an automatic install is advisable, or
- Create queries that target a small sub-set of machines to perform an automatic install then create several advertisements scheduled to run at different times that use each query as their target.

For information on using collections to target advertisements, refer to *Microsoft Systems Management Server 2.0 Administrator's Guide*.

IMPORTANT: The SMS administrator should take care when specifying Auto Install of Agents because installation failure can occur.

The Microsoft Windows NT *SETUP.EXE* application is used to install the Microsoft Management Agents. This application opens windows during the installation process which can lead to unpredictable results during a background install.

The client end-user can avoid this potential problem by running a password-protected screen saver during an automated installation or by making sure that qualified personnel are available to carry out a manual installation when the software package arrives.

Creating an Advertisement

After determining how the package will be distributed, use this procedure to create a suitable advertisement:

1. To obtain the Advertisement Properties window:
 - a. Right-click on Advertisements on the SMS Administrator console.
 - b. Select New from the drop-down menu.
 - c. Select Advertisement.

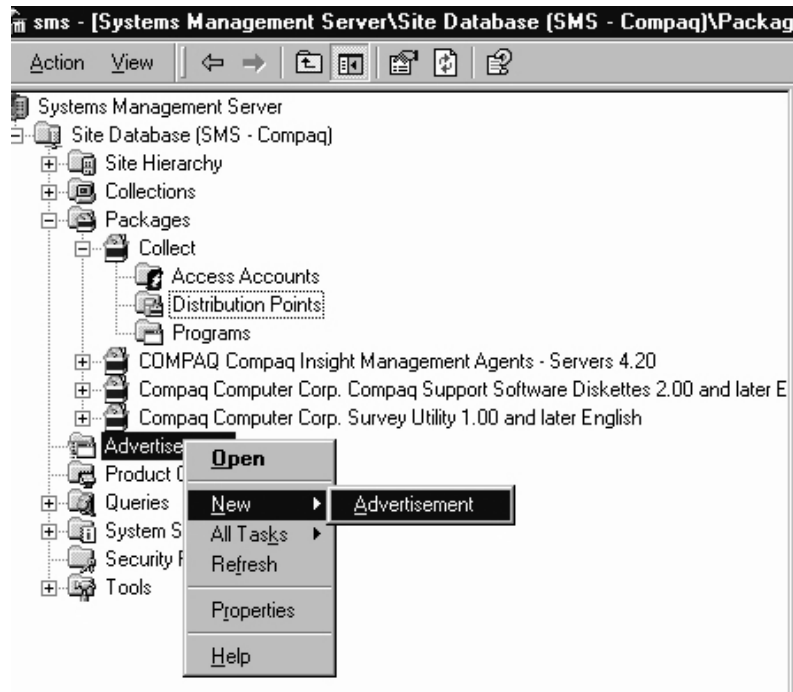


Figure 5-9. Obtaining the Advertisement Properties window

2. Using the General tab of the Advertisement Properties window, specify the contents of the advertisement:
 - a. Specify a name for the advertisement.
 - b. Identify the software package to be distributed.
 - c. Specify the particular program from the Compaq Software Distribution File to be run on the client. For more information on these programs, see Chapter 4, “Compaq Software Distribution Files: Features.”
 - d. Specify the collection targeting the clients that will receive this advertisement.

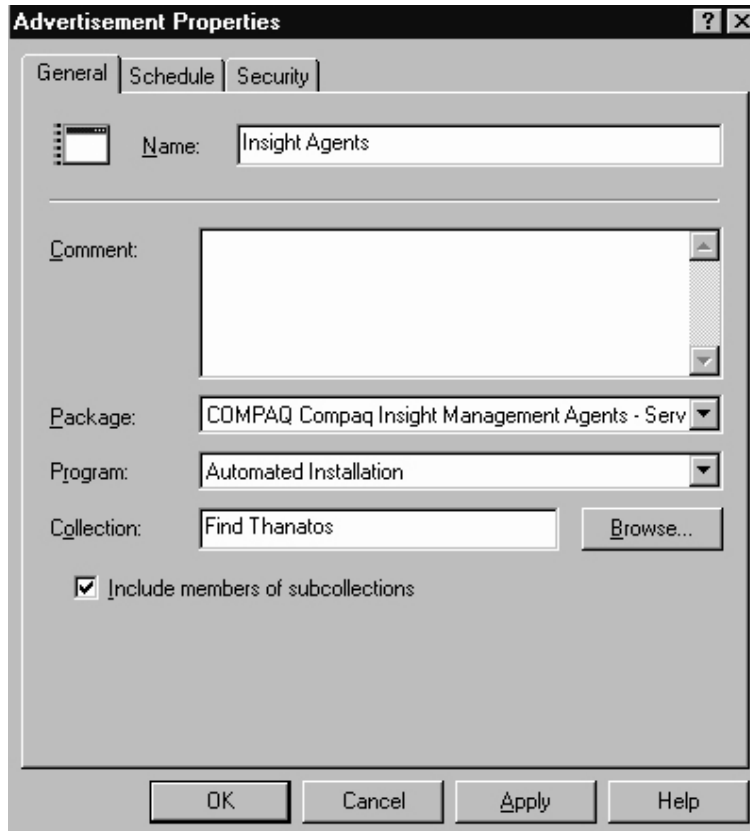


Figure 5-10. Specifying the contents of the advertisement

3. Using the Schedule tab, specify the distribution criteria:
 - a. Set the priority to be assigned by SMS to the advertisement.
 - b. If required, make the advertisement mandatory. In this case, use the starburst icon to schedule the advertisement or specify that the advertisement will run when a particular client event occurs.

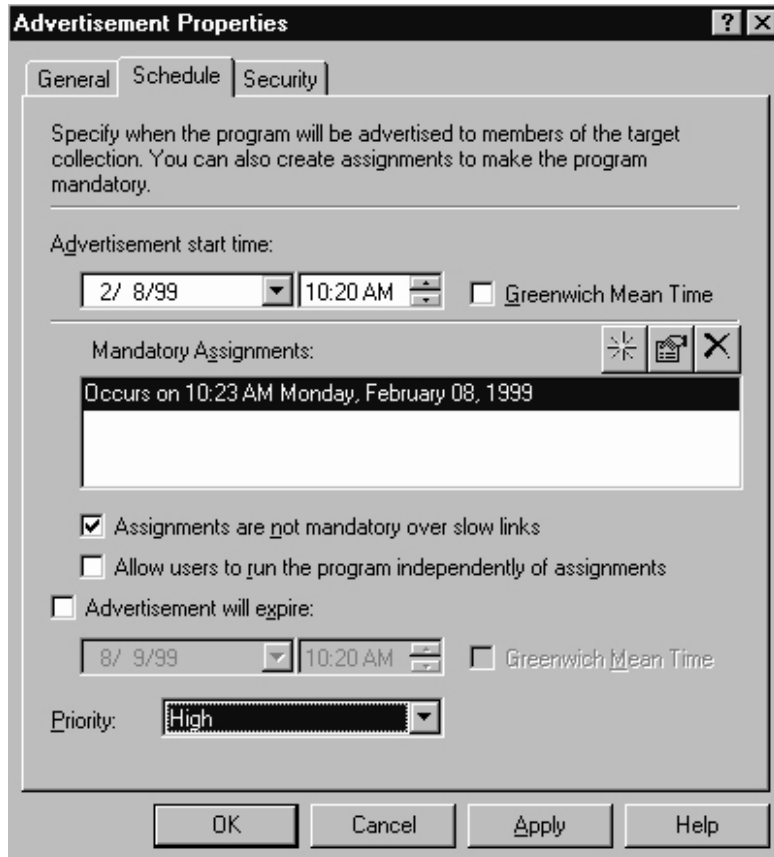


Figure 5-11. Specifying distribution criteria

4. Select OK to save the advertisement. SMS now places the package on the SMS distribution points and notifies clients at the appropriate time that an advertisement is ready to run.

Appendix **A**

Obtaining Compaq Software

Locating Source Files for Compaq Products

Source files for Compaq products are available at these locations:

Table A-1
Locations of Source Files

Product	Location
Compaq Management Agents	Compaq Management CD: VAGENTS\WIN-NT\ENG http://www.compaq.com/support/files/server/softpaqs/mgmtsol/cimwinnt.html
Compaq Support Software (Compaq NT SSD)	Compaq SmartStart CD: VCPQSUPSW\NTSSD NT 3.51 SSD: http://www.compaq.com/support/files/server/softpaqs/WINNT/NTSSD351.html NT 4.0 SSD: http://www.compaq.com/support/files/server/softpaqs/WINNT/NTSSD400.html

continued

Table A-1
Locations of Source Files *continued*

Product	Location
Compaq Survey Utility	Compaq Management CD \SURVEYWIN-NT\ENG http://www.compaq.com/support/files/server/softpaqs/WINNT/ntsurvey.html
Compaq Inventory Collector (Collect)	Compaq Management CD \TOOLKIT\SMS\COLLECTWIN32 http://www.compaq.com/support/files/server/softpaqs/mgmtsol/cimtoolk.html
Compaq Software Distribution Files (.SMS files)	Compaq Management CD \TOOLKIT\SMS\PDF2.0 http://www.compaq.com/support/files/server/softpaqs/mgmtsol/cimtoolk.html

NOTE: The latest versions of these source files are also available from the Software Support Server.

Pre-Installation Requirements

This Appendix

This appendix provides information on these topics:

- The hardware platforms supported by the integration solutions
- Requirements for Microsoft Systems Management Server (SMS) 2.0
- Requirements for Compaq Management Agents
- Requirements for the integration solutions:
 - Compaq Inventory Collector
 - Compaq Software Distribution Files

Supported Hardware Platforms

Supported hardware platforms are:

- Compaq ProLiant and ProSignia servers
- Compaq Professional Workstations
- Compaq Deskpro 2000, 4000, 4000N, 4000S, 6000, EP and EN series desktops
- Compaq Armada portables (except 1100 and 6500 models)

Requirements for SMS

Prior to installing Microsoft Systems Management Server 2.0 (SMS), make sure that these requirements are met:

- Minimum hardware requirements:
 - Compaq server with a Pentium Pro 200 processor
 - SMS only: 128MB RAM; SMS and SQL Server: 256MB RAM
 - 1GB available hard disk space; if using the machine to run SQL Server or distribute software packages: 4GB
- Minimum software requirements:
 - For site servers: Microsoft Windows NT Server 4.0 with Service Pack 4
 - For site servers: Microsoft SQL Server for Windows NT 6.5 with Service Pack 4

IMPORTANT: Since SMS depends heavily on the use of Microsoft SQL Server as a data store, Compaq recommends tuning SQL Server to optimize performance. For more information, refer to *Configuration and Tuning of Microsoft SQL Server 6.5 for Windows NT on Compaq Servers* which is available from Compaq's website at: <http://www.compaq.com/support/techpubs/whitepapers/415a0696.html>

Requirements for Compaq Management Agents

Prior to installing Compaq Management Agents, make sure that these requirements are met:

- Minimum hardware requirements:
 - ❑ 32MB RAM; 48MB recommended
 - ❑ 35MB available hard disk space
 - ❑ Network Interface Controller (NIC) supported by Microsoft Windows NT 3.51 or later
 - ❑ If using the Compaq Insight Manager Asynchronous Management, Remote Control, or Alarm Forwarding features: a Hayes-compatible modem
- Minimum software requirements:
 - ❑ Microsoft Windows NT 3.51
 - ❑ SNMP and TCP/IP stacks installed
 - ❑ To manage NetWare servers with IPX protocol: NWLink IPX/SPX transport

Requirements for Compaq Integration Solutions

There are pre-installation requirements for each of Compaq's integration solutions:

- Compaq Inventory Collector
- Compaq Software Distribution Files

See below for more information.

Requirements for Compaq Inventory Collector

Prior to installing Compaq Inventory Collector, make sure that these requirements are met:

- Minimum hardware requirements:
 - 1MB available disk space
 - Network Interface Controller (NIC) supported by Microsoft Windows NT 3.51 or later, Microsoft Windows 95, or Microsoft Windows 98, as appropriate
- Minimum software requirements:

Table B-1
Minimum Software Requirements

Hardware Platform	Models	Microsoft Operating System	Compaq Management Agents
Servers		Windows NT 3.51 or later	Server Management Agents 2.61 or later
Professional Workstations	AP and SP	Windows NT 3.51 or later	Desktop Management Agents 3.51 or later
	Other	Windows NT 3.51 or later	Server Management Agents 2.61 or later
Desktops	Deskpro	Windows NT 3.51 or later Windows 95 Windows 98	Desktop Management Agents 3.51 or later
Portables	Armada	Windows NT 3.51 or later Windows 95 Windows 98	Desktop Management Agents 3.51 or later

IMPORTANT: These are general requirements. Server and Desktop versions of the Compaq Management Agents have additional, version-specific requirements. For more information, refer to "Compaq Insight Manager Planning and Configuration Guide" which is available on the Compaq Management CD.

Requirements for Compaq Software Distribution Files

Compaq Software Distribution Files are designed for use with Microsoft Windows NT 3.51 or later. There are no additional pre-installation requirements.

Index

.
MIF file
 contents 2-1
 contents tabulated 2-2
 default filenames 2-2
 transferring to the site
 server 2-1
 viewing contents 3-14
.SMS file *See* distributing:
 software products

/

/? command line option 2-12
/F command line option 2-11
/H command line option 2-11
/I command line option 2-11
/M command line option 2-11
/SE command line option 2-11
/SS command line option 2-12
/SW command line option 2-12
/U command line option 2-12

A

advertisement
 creating 3-11, 5-12
 targeting 5-11
Advertisement Properties window
 invoking, illustrated 5-12

Advertisement Properties window,
 illustrated 3-12
audience, intended 1-1
Auto Install of Agents 4-2
 installation warning 4-3
Automated Driver Install and
 Reboot for SSD 4-2
Automated Driver Install for
 SSD 4-2
Automated Driver Refresh and
 Reboot for SSD 4-3
Automated Driver Refresh for
 SSD 4-3

C

Cluster Interconnect Information
 table, contents 2-10
Cluster Node Information table,
 contents 2-10
Collect *See* Compaq Inventory
 Collector
Collect Package Properties window,
 illustrated 3-4
COLLECT.EXE
 obtaining 3-2, 3-4, 3-13
collecting
 Compaq-specific inventory
 information 2-1

- command line, Collect 2-11
 - default 2-12
 - options 2-11
 - specifying 3-6
 - syntax 2-12
- Compaq Inventory Collector
 - command line 2-11
 - default 2-12
 - options 2-11
 - syntax 2-12
 - command line, default 3-13
 - command line, running
 - from 3-13
 - described 1-2
 - introduction to features 2-1
 - options for installation and use 3-2
 - pre-installation
 - requirements B-3, B-4
 - running manually 3-13
 - copying *COLLECT.EXE* 3-13
 - logging in to SMS domain 3-13
 - scheduling 3-12
 - source file, obtaining A-2
 - using SMS advertisements 3-4
 - copying *COLLECT.EXE* 3-4
 - creating an advertisement 3-11
 - creating an SMS package 3-4
 - scheduling 3-12
 - specifying the command line 3-6
 - using the SMS login script 3-2
 - copying *COLLECT.EXE* 3-2
 - modifying the script 3-3
- Compaq Management Agents
 - .SMS* program
 - Auto Install of Agents 4-2
 - Manual Install of Agents 4-2
 - distributed using Compaq Software Distribution Files 1-2
 - integrating with SMS 1-2
 - pre-installation
 - requirements B-3
 - source file, obtaining A-1
 - using to obtain Compaq-specific inventory 2-1
- Compaq Management Agents for NT Server
 - distributing 4-1
- Compaq Server Utility
 - distributed using Compaq Software Distribution Files 1-2
- Compaq Software Distribution Files
 - described 1-2
 - list of products distributed 1-2
 - pre-installation
 - requirements B-3, B-5
 - source file, obtaining A-2
- Compaq Support Software
 - .SMS* program
 - Automated Driver Install and Reboot for SSD 4-2
 - Automated Driver Install for SSD 4-2
 - Automated Driver Refresh and Reboot for SSD 4-3
 - Automated Driver Refresh for SSD 4-3
 - Manual Driver Install for SSD 4-2
 - distributing 4-1
 - source file, obtaining A-1
- Compaq Support Software for Microsoft Windows NT 4.0 *See* NT 4.0 SSD

Compaq Survey Utility
 .SMS program
 Survey Utility 4-3
 source file, obtaining A-2

Compaq Survey Utility for NT
 Server
 distributing 4-1

COMPAQ0.MIF, inventory
 tables 2-2
 contents 2-3

COMPAQ1.MIF, inventory
 tables 2-2
 contents 2-6

COMPAQ10.MIF, inventory
 tables 2-3
 contents 2-9

COMPAQ2.MIF, inventory
 tables 2-2
 contents 2-6

COMPAQ3.MIF, inventory
 tables 2-2
 contents 2-7

COMPAQ4.MIF, inventory
 tables 2-2
 contents 2-7

COMPAQ5.MIF, inventory
 tables 2-2
 contents 2-8

COMPAQ6.MIF, inventory
 tables 2-2
 contents 2-8

COMPAQ7.MIF, inventory
 tables 2-2
 contents 2-8

COMPAQ8.MIF, inventory
 tables 2-2
 contents 2-8

COMPAQ9.MIF, inventory
 tables 2-3
 contents 2-9

COMPAQn.MIF
 default .MIF file 2-2

copying
 COLLECT.EXE 3-2, 3-4, 3-13

CPU Attributes table, contents 2-3

Create Package from Definition
 wizard
 file management options,
 illustrated 5-7
 invoking 5-3
 invoking, illustrated 5-3
 locating source files,
 illustrated 5-8
 selecting the .SMS file,
 illustrated 5-5
 selecting the software product,
 illustrated 5-6
 starting 5-4
 starting, illustrated 5-4

creating
 advertisement 5-12
 package 5-3

D

Data Source tab, illustrated 3-5

distributing
 Compaq Management Agents
 for NT Server 4-1
 Compaq Support Software 4-1
 Compaq Survey Utility for NT
 Server 4-1
 software products 4-1. *See*
 software products,
 distributing
 distribution program 4-2
 distribution programs, listed 4-2
 targeting queries 5-11
 software products, using .SMS
 files 4-1

distribution point, selecting 5-9

distribution program 4-2

Drive Array Controller table,
 contents 2-7

Drive Array Logical Drive table,
 contents 2-7

Drive Array Physical Drive table,
 contents 2-7

E

EISA/PCI Slots table, contents 2-4
Environment tab, illustrated 3-9

F

Fibre Channel Array Controller
table, contents 2-9
Fibre Channel Array Logical Drive
table, contents 2-9
Fibre Channel Array Physical Drive
table, contents 2-10
Fibre Channel Host Controller
table, contents 2-10

G

General tab, illustrated 3-8, 5-13

H

hardware platform, supported B-1
Health Subsystem table,
contents 2-7

I

IDE Devices table, contents 2-6
information
obtaining more 1-2
integrating
management agents with
SMS 1-2
integration solution
listed 1-2
why required 1-2
integration solutions
capabilities 1-2
intended audience 1-1
inventory
using Compaq Inventory
Collector 2-1
viewing at Resource Explorer
window, example 3-15

inventory table
contents described 2-2

L

login script
modifying 3-3
example 3-3
where to find 3-2

M

management agents *See* Compaq
Management Agents
Management Information
Format *See* .MIF file
Manual Driver Install for SSD 4-2
Manual Install of Agents 4-2
Memory Module Attributes table,
contents 2-5
Microsoft SQL Server, tuning
performance of B-2
Microsoft Systems Management
Server 2.0 *See* SMS
modifying
login script 3-3

N

New Distribution Points wizard
obtaining, illustrated 5-9
selecting distribution points,
illustrated 5-10
NT 4.0 SSD
distributed using Compaq
Software Distribution
Files 1-2

O

obtaining
more information 1-2
software products A-1
source files A-1

P

package, creating 5-3
 PC Card Slots table, contents 2-6
 platform
 hardware, supported B-1
 Portable Batteries table,
 contents 2-5
 Portable Docking Station table,
 contents 2-5
 pre-installation requirements B-1
 products, software, obtaining A-1
 program, software distribution 4-2

Q

querying
 Compaq-specific inventory
 information 3-15
 SMS database 5-11
 examples 5-11

R

Remote Insight Board Information
 table, contents 2-9
 Requirements tab, illustrated 3-10
 requirements, pre-installation B-1
 Resource Explorer window,
 illustrated 3-14
 Resource Explorer window, sample
 information listed 3-15

S

Schedule tab, illustrated 5-14
 scheduling
 Collect 3-12
 SCSI Devices table, contents 2-8

SMS

database, adding Compaq-
 specific inventory 2-1
 integrating with management
 agents 1-2
 pre-installation
 requirements B-2
 recommendation to tune SQL
 Server B-2
 site server, adding Compaq-
 specific inventory 2-1
 site server, receiving *.MIF*
 file 2-1
 SMS Administrator console
 expanding the new package,
 illustrated 3-6
 invoking Advertisement
 Properties window 5-12
 invoking Create Package from
 Definition wizard 5-3
 invoking New Distribution
 Points wizard 5-9
 obtaining the Advertisement
 Properties window,
 illustrated 3-11
 obtaining the Collect Program
 Properties window,
 illustrated 3-7, 3-11
 SMS database
 querying 3-15, 5-11
 SMS package
 creating 3-4
 software distribution program 4-2

- software products
 - creating an
 - advertisement 5-12
 - distributing 5-1
 - creating a package 5-3
 - file management options 5-7
 - pre-installation
 - requirements 5-1
 - preparing the site server 5-2
 - process 5-1
 - selecting the *.SMS* file 5-5
 - selecting the software product 5-6
 - locating source files 5-8
 - minimum software revisions 5-2
 - selecting the distribution points 5-9
 - warning on potential installation failure 5-11
 - specifying distribution criteria 5-14
 - specifying the advertisement contents 5-13
- Software Support Server A-2
- Software Version Information table, contents 2-8
- source file
 - obtaining A-1

- specifying
 - items to be inventoried 2-11
 - location of *.MIF* files 2-11
 - name of *.MIF* files 2-11
- SQL Server database
 - adding Compaq-specific inventory 2-1
- Storage System Attributes table, contents 2-8
- Survey Utility 4-3
- System Attributes table, contents 2-4
- Systems Management Server
 - obtaining Compaq-specific inventory 2-1

T

- transferring
 - .MIF* file to the site server 2-1

U

- UPS Attributes table, contents 2-8

V

- Video Monitor table, contents 2-6