

Specification for Fujitsu Diagnostic Tool(FJDT)

1. Startup for FJDT program

- Insert a bootable Dos diskette into A drive, then turns on the power.
- After booting up, the DOS A: prompt should appear automatically.
- Type-in "FJDT", then press the Enter key for the menu option on the monitor.

*Note: FJDT cannot be run under a DOS shell program or WINDOWS environment.
If you are running Windows 95/98, restart your system in MS-DOS mode with the bootable floppy disk for MS-DOS.

2. Disclaimer

At the startup, the program pops-up the DISCLAIMER window to the user.
Please refer to Fig.1 which is the current Disclaimer of FDDT.

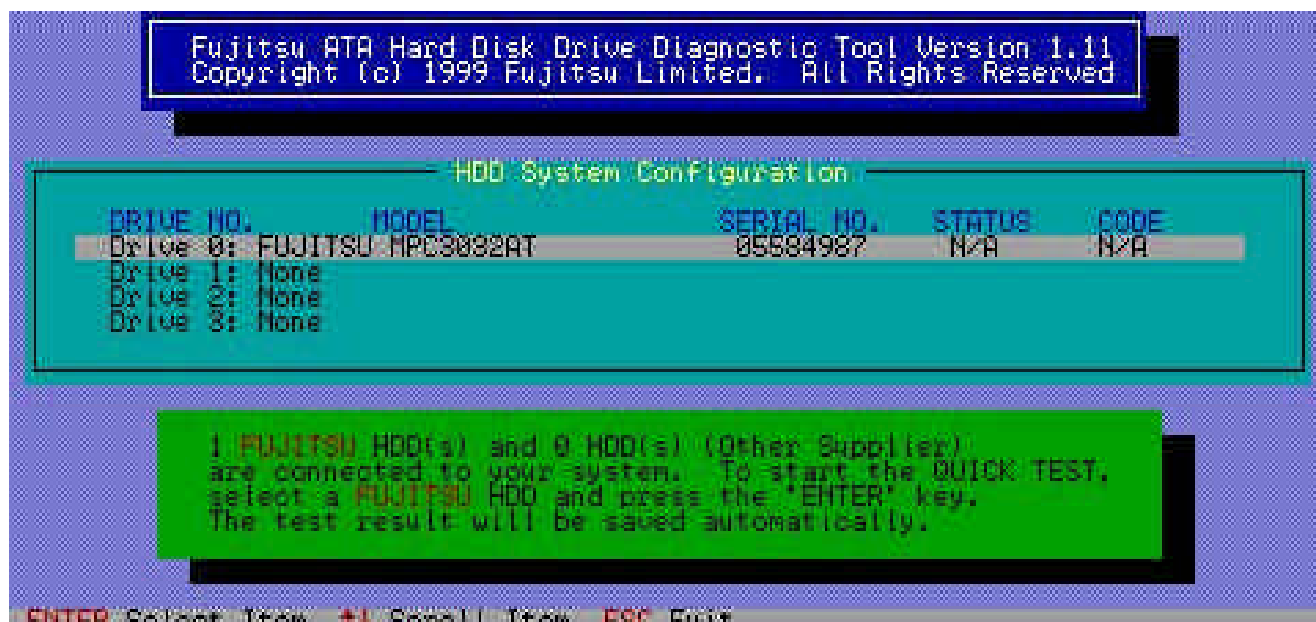


<Fig.1 : DISCLAIMER >

3. Main Menu

When the user accepts all what is stated in the disclaimer and “Agree” is selected, the program will identify the connected HDDs in Customer’s PC.

Then, the Main Menu will be displayed. This is the actual starting point of the program. Fig.2 is the Main Menu display of FJDT.



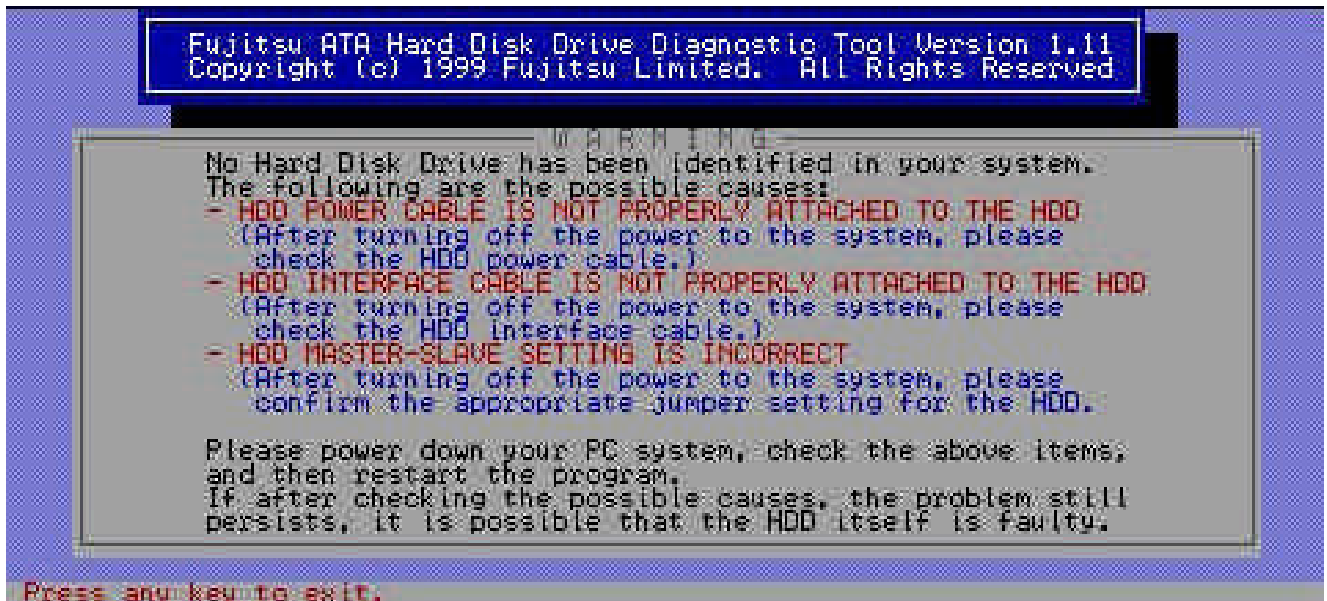
<Fig.2 : Main Menu >

If user selects NO Fujitsu drive or none drive, the test will not be started and error messages will be shown. Please refer to Fig.3.



<Fig.3 : When Non-Fujitsu drive or None drive are selected.>

The Tool detects None drive under tested PC system, the following message is indicated on the monitor. Please refer to Fig.4.



<Fig.4 : Case of none drive >

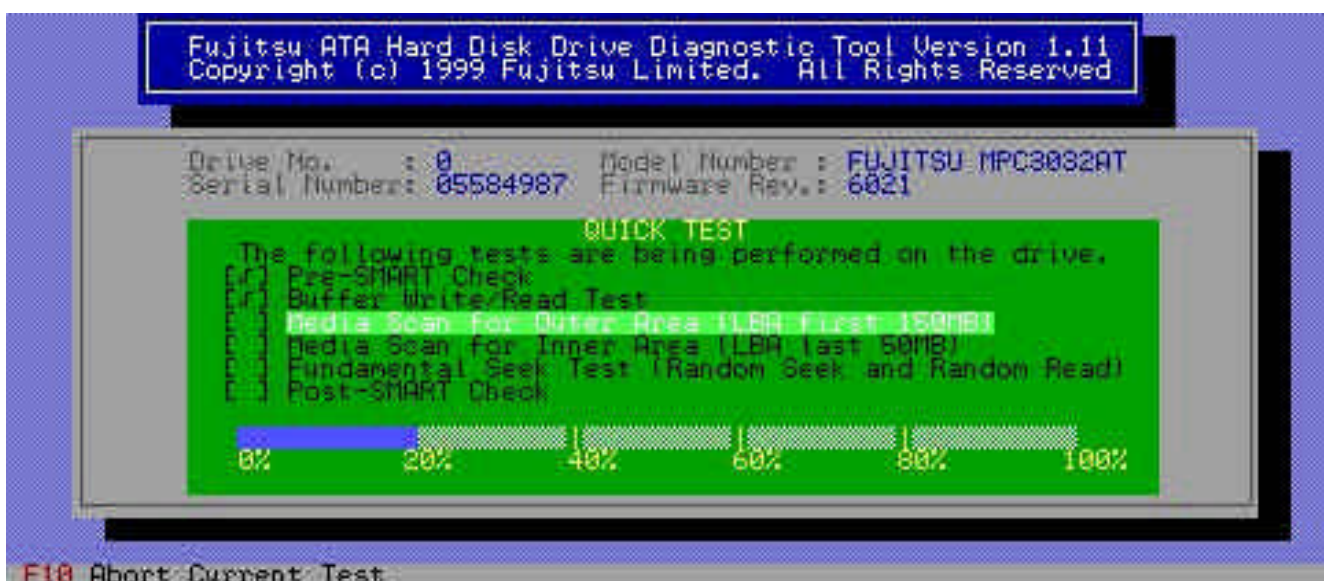
4. Quick test

When user selects Fujitsu HDD on Main menu and press "Enter key", the Quick test will be started.

Fig.5 is the display of Quick test.

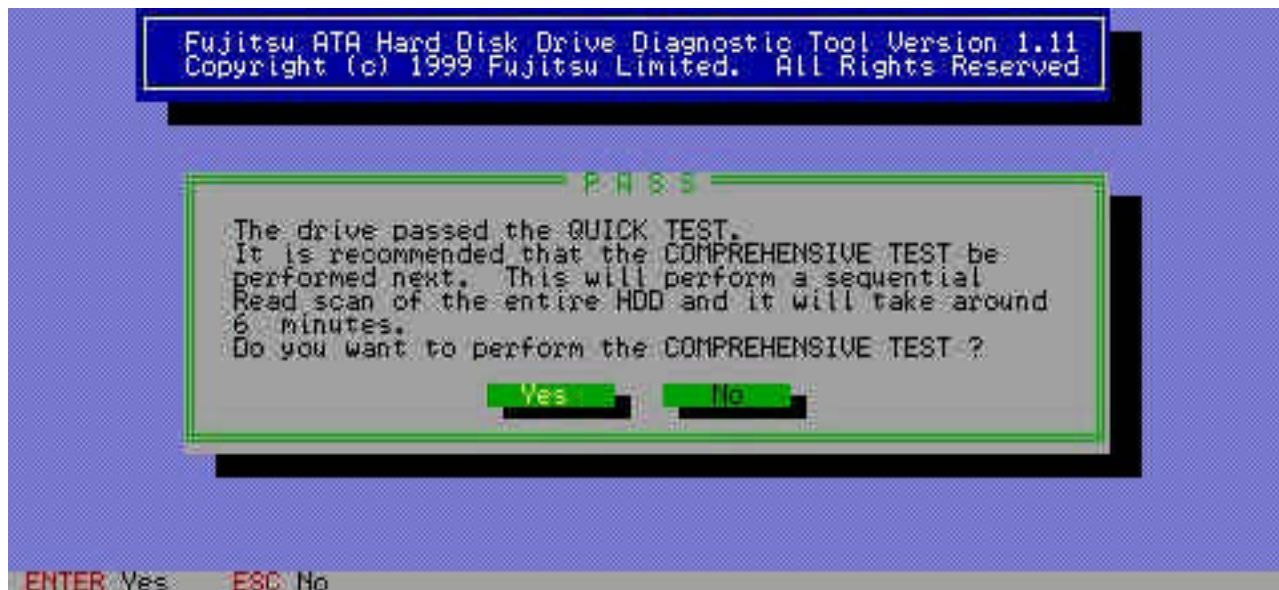
The following are the test items of Quick test and the test progress can be seen on the screen in the test.

- Pre-SMART check
- Buffer RAM Write/Read/Compare test
- Media Scan for first 150MB
- Media Scan for last 50MB
- Fundamental Seek/Read Test (Random Seek and Random Read)
- Post-SMART check



<Fig.5 : Quick test >

When test is completed without any failures, the comments of Fig.6 will appear on the display.



<Fig.6 : The display of test result when Quick test is passed>

5. Comprehensive Test

When user selects “Yes”, Comprehensive Test will be started.

Fig.7 is the display of Comprehensive Test.

The following are the test items of Comprehensive Test and the test progress can be seen on the screen in the test.

- g) Media Scan for all area
- h) Post-SMART check-2



<Fig.7 : Comprehensive Test >

When test is completed without any failures, the comments of Fig.8 will appear on the display



<Fig.8 : The display of test result when Comprehensive Test is passed>

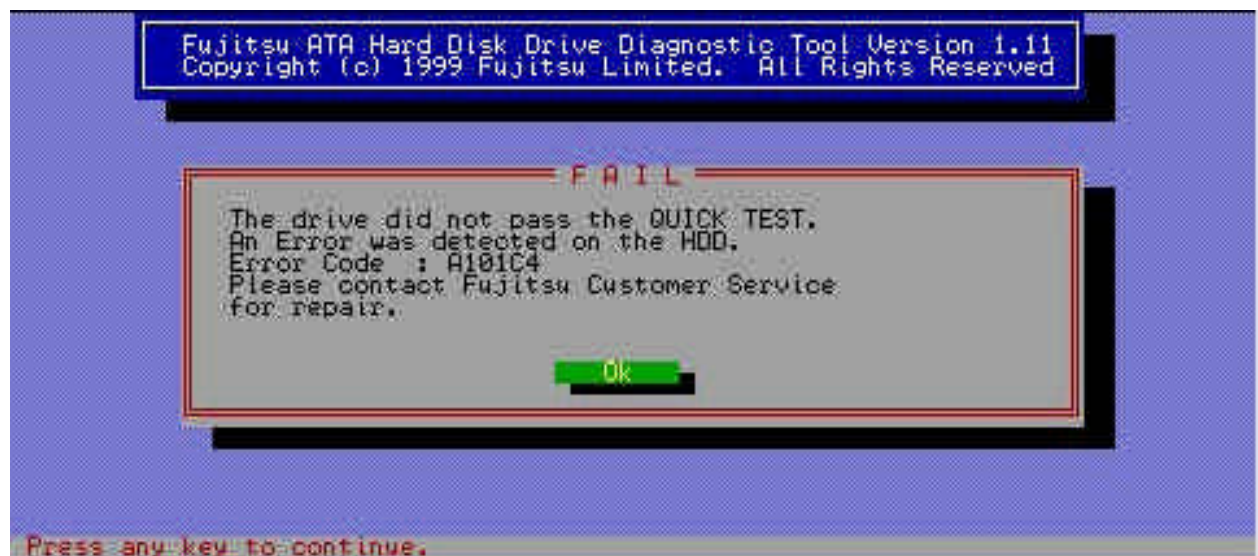
6. Case of Fail level and Gray level

1) Fail level

When FJDT detects the following errors, the test drive is judged as "Fail level".

- Quick test : If the number of Bad block is two or more or any other error occurs
- Comprehensive Test : If the number of Bad block is five or more or any other error occurs

Fig.9 is the display if the drive is at "Fail level".



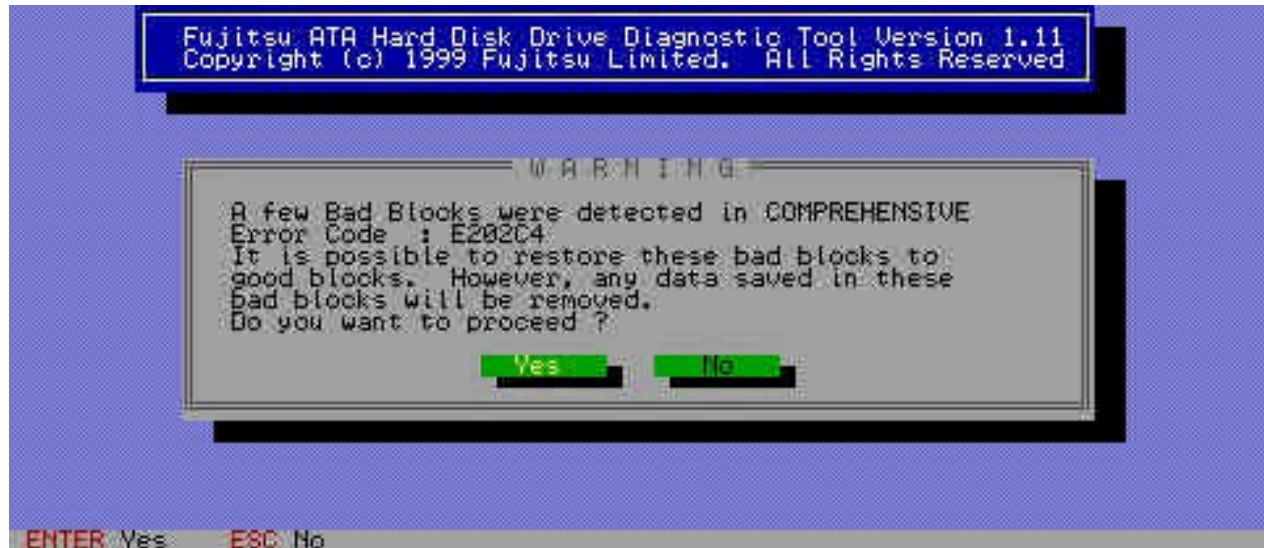
<Fig.9 : The display of test result when Quick test is failed>

2) Gray level

When FJDT detects the following errors, the test drive is judged as “Gray level”.

- Quick test : If the number of Bad block is one
- Comprehensive Test : If the number of Bad block is four or less

Fig.10 is the display if the drive is at “Gray level”.



<Fig.10 : The display of test result when Comprehensive Test is Gray>

If user selects “Yes” on the above display, the error recovery process will be stated. Fig.11 is the display if the Bad block could be recovered by the error recovery.

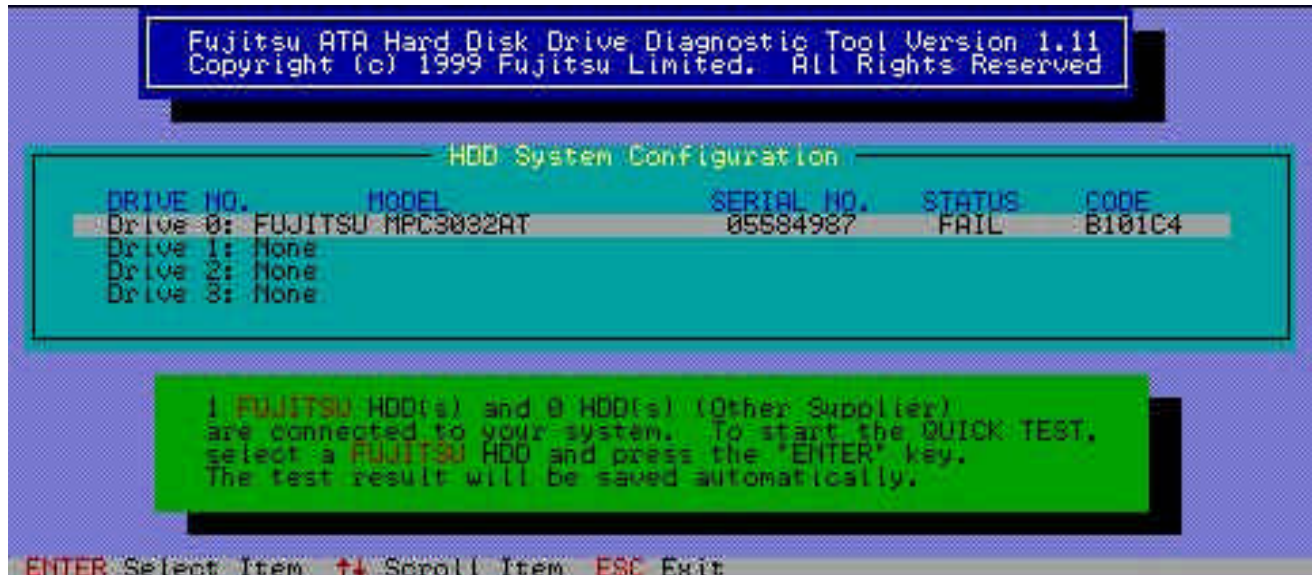


<Fig.11 : The display of test result when the error recovery is passed>

7. Test result.

User can see the test status of FJDT on Main Menu display when the test is finished. Fig.12 is Main Menu display when the FJDT is finished.

Please refer to “FJDT_Code.Doc” for the detail of the test status code.



<Fig.12 : Main Menu >

