

Matrox **Display Driver Release Notes**

For display driver version 2.08.00 (XDDM)

20100-401-0100
2009.06.11

www.matrox.com/graphics

matrox[®]
Graphics for Professionals

Contents

1	Overview	3
	What's new in this release	3
2	Driver Changes in Version 2.08.00	6
	Fixed issues	6
	Notes and limitations.....	6
3	Display Driver Information.....	8
	Display drivers included in this package	8
	Supported Matrox hardware	8
	Supported operating systems	9
	Supported languages.....	9
4	Display Driver Installation.....	10
	Minimum hard disk space required.....	10
	Before you begin	10
	Downloading the display driver.....	10
	Installing the display driver	10
5	Contact Us	11
6	Disclaimer	12

1 Overview

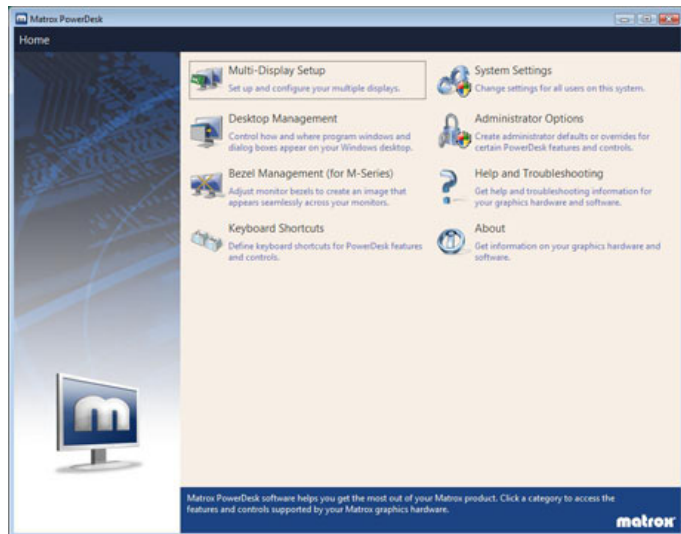
This document describes the current release of the Matrox display driver (v. 2.08.00) for Microsoft Windows operating systems. Matrox provides these notes to describe bug fixes and improvements to PowerDesk software and to the display driver.

What's new in this release

This section describes the latest features added to this version of the driver.

New PowerDesk user interface

The 2.08.00 display driver features a new PowerDesk user interface, designed to be simple and easy to use.



New PowerDesk features

- **Mode Management** – Mode management provides increased resolution support by enabling you to select display modes not provided by default in your monitor's EDID. This means that you can access a variety of wide-screen resolutions, video timings, and refresh rates.

- **System Settings and Administrator Options** – These features extend greater control and flexibility for system administrators managing multi-user systems. Additionally, Matrox Deployment Tools enable administrators to easily install and configure Matrox products across multiple systems. Using these tools, administrators can export the multi-display setup and desktop management settings from one system and apply them company-wide to multiple systems at the same time.
- **Reduce tearing** – This feature helps improve performance or image quality when refreshing images of video playback or 3D rendering programs.
- **Personalized divisions (Desktop Divider)** – With Desktop Divider, you can divide your large desktop into smaller *cells*. The 2.08.00 driver adds the ability to personalize your desktop divisions, effectively enabling you to set different sizes for your cells. The result is an asymmetric desktop customized to the way you work.

Support for GXM and Veos products

The 2.08.00 display driver package adds support for GXM (DualHead2Go and TripleHead2Go) and Veos products. Users of Matrox M-Series graphics hardware can now add a GXM or Veos product to their existing multi-monitor setup.

Support for two Matrox graphics cards

Matrox PowerDesk software supports multi-card setups with hardware from the same family of products. Using two graphics cards enables you to use the outputs from both your cards to create a desktop larger than what's possible using only one graphics card.

Hardware OpenGL stereo

This is the first M-Series display driver to support quad-buffered stereo. Quad-buffering is the ability to render left, right, front, and back buffers independently. The front/left and front/right buffers that display the stereo images can be swapped in sync with shutter glasses while the back/left and back/right buffers are being updated. The result is a smooth stereoscopic image.

Hardware OpenGL stereo is supported only on Matrox M9120 products.

OpenGL extensions

ARB_vertex_program – Allows an application to define a program of instructions to control per-vertex computations such as transformations, lighting, and texture coordinate generation. It's normally used with the **ARB_fragment_program** but doesn't have to be.

ARB_fragment_program – Allows an application to define a program of instructions to control per-pixel computations such as texturing, fog, color, etc. It's normally used with **ARB_vertex_program**, but doesn't have to be.

ARB_fragment_program_shadow – This is a companion extension to **ARB_fragment_program** that allows for shadow map comparisons within the fragment program.

GL_EXT_framebuffer_object – Provides a simplified way for applications to draw into off-screen memory buffers that can then be used as an intensity, depth, or stencil buffer. The buffer can also be used for drawing operations so it can, for example, be used as a texture.

GL_EXT_packed_depth_stencil – Allows us to report that our 24-bit depth buffer (Z-buffer) and 8-bit stencil buffer are packed into a single 32-bit surface. This allows both depth and stencil operations to be handled simultaneously.

GL_NV_texture_rectangle, GL_ARB_texture_rectangle – Allow the creation and usage of non-power of two textures. This is limited to 2D textures and doesn't support mip-map textures, among other limitations. We support these for legacy applications, but they've been replaced by **GL_ARB_texture_non_power_of_two**.

GL_ARB_texture_non_power_of_two – Allows full support of non-power of two textures to all texture types (1D, 2D, 3D, and cube map) with no restrictions. This extension replaces **GL_NV/ARB_texture_rectangle**.

2 Driver Changes in Version 2.08.00

Fixed issues

- While using Matrox P690, the display remains blank (black) after hot swapping from an Eizo Radiforce G22 monitor to an Eizo R12 monitor. [20639]
- While using Matrox QID, MPEG-1 video clip appeared discolored when played on Windows Media Player 9. [20303]
- Unable to apply 1336 × 768 display resolution through PowerRes (now Mode Management). [21103]
- Installing the display driver on Eizo G22 would cause the desktop to lock at a very low resolution and color depth. [20630]

Notes and limitations

- **Windows 2000** – While using M-Series graphics cards, support is limited to one M-Series graphics card in single display mode.
- **Windows Vista** – Certain PowerDesk options are available only for 32-bit versions of Windows Vista.
- When using stereo glasses in a multi-display or multi-card setup, stereo is supported only on the first display, using either stretched or clone mode.
- Full-screen programs (typically games) designed for versions of DirectX *earlier* than 8.0 may not support horizontal display resolutions higher than 2048. While using multiple displays in *stretched* mode, the horizontal resolution of each display is combined (for example, a combined *TripleHead* resolution could be as high as 3840 × 1024). As a result, the stretched mode resolutions you can use with such programs may be limited to resolutions lower than what your graphics hardware and display driver can support. Selecting an unsupported resolution within a program may cause the program to quit unexpectedly.
- While using OpenGL hardware acceleration, we recommend you close your OpenGL software before changing your display setup (for example, refresh rate, display resolution, or color depth). You may experience problems if OpenGL software is running while your display setup is changed.
- Under Windows XP/Vista, certain Direct3D programs may not be properly support some multi-card configurations.

- When using a Dell 2408 monitor with a DVI-to-Mini DisplayPort adapter, the monitor's EDID isn't properly read. We recommend changing the monitor's input source to use DVI-D. This will re-detect the monitor.

3 Display Driver Information

Display drivers included in this package

This driver release is a unified package. This package contains drivers for the following products.

Matrox Graphics Products	Display Driver Version
M-Series	2.08.00.074 WHQL
P-Series	2.06.01.006 SE U WHQL
Parhelia Series*	2.06.01.006 SE U WHQL
Extio Series	2.06.01.006 SE U WHQL
QID Series	2.06.01.006 SE U WHQL
Epica Series	2.06.01.006 SE U WHQL
MMS Series†	6.00.006 WHQL
G-Series†	6.00.006 WHQL

* Excluding the following: Parhelia Precision SDT, Parhelia Precision SGT, and Parhelia HR256.

† G200 or later.

Supported Matrox hardware

This package supports the following Matrox products.

Matrox Graphics Products
M-Series
P-Series
Parhelia Series*
Extio Series
QID Series
Epica Series
MMS Series
G-Series†
Graphics Expansion Modules (GXMs)‡
Veos

* Excluding the following: Parhelia Precision SDT, Parhelia Precision SGT, and Parhelia HR256.

† G200 or later.

‡ USB-based versions only.

Supported operating systems

This driver package supports the following Windows operating systems.

2.08.00.074

Windows 2000

Windows XP (32-bit, 64-bit)

Windows Server 2003

Windows Server 2008 R1*

Windows Vista (32-bit, 64-bit)*

* XDDM mode.

Supported languages

This driver package supports the following languages:

- English

4 Display Driver Installation

Minimum hard disk space required

We recommend you have 55 MB of free space available on your hard disk.

Before you begin

If a Matrox display driver is already installed, we recommend you uninstall your current Matrox software before updating your driver version.

To uninstall Matrox software:

Windows 2000/XP –

- 1 Click **Start** → **Settings**⁺ → **Control Panel** → **Add/Remove Programs** (double-click^{*}) → **Matrox PowerDesk-SE** → **Change/Remove** → **Yes**. (* Depending on your version and configuration of Windows, this part of the step may not be necessary.)
- 2 Click **Matrox Driver** → **Change/Remove** → **Yes**.

Windows Vista –

- 1 Click **Start** → **Settings**⁺ → **Control Panel** → **Programs**^{*} → **Programs and Features** → **Matrox PowerDesk-SE** → **Uninstall** → **Yes**. (* Depending on your version and configuration of Windows, this part of the step may not be necessary.)
- 2 Click **Matrox Driver** (or **Matrox M-Series Driver**) → **Uninstall/Change** → **Yes**.

Downloading the display driver

Matrox makes the latest display drivers available on the Matrox Web site (www.matrox.com/graphics/support/drivers).

Installing the display driver

If a CD was provided with your Matrox product, insert the Matrox installation CD-ROM in your CD-ROM drive, and follow the on-screen instructions.

If a CD wasn't provided with your Matrox product, download the latest display driver from the Matrox Web site, and follow the on-screen instructions to install your display driver.

5 Contact Us

The Matrox Web site has product literature, press releases, technical material, a sales office list, trade show information, and other relevant material. Visit us at www.matrox.com/graphics.

If you have any questions or comments about our products or solutions, contact us at www.matrox.com/graphics/contact.

6 Disclaimer

Information in this document may contain technical inaccuracies or typographical errors. Information may be changed or updated without notice. Matrox reserves the right to make improvements and/or changes in the products, programs and/or specifications described in this information at any time without notice. All trademarks and trade names, service marks and logos referenced herein belong to their respective owners.

Copyright © 2009 Matrox is a registered trademark of Matrox Electronic Systems Ltd. All rights reserved.

Matrox Graphics Inc.

1055 Saint Regis Boulevard
Dorval, Quebec, Canada H9P 2T4

North America: 1-800-361-1408

International: (514) 822-6000

Email: graphics@matrox.com

Web site: www.matrox.com/graphics

Technical support:

www.matrox.com/graphics/support

To locate the sales office nearest you, visit

www.matrox.com/graphics/contact

matrox[®]
Graphics for Professionals