



World Domination Through Corporate Warfare



Contents

Introduction.....	3
The Object of the Game.....	4
System Requirements.....	4
Starting A New Game.....	5
Multiplayer Gaming.....	6
Playing the game.....	8
Understanding the map.....	8
Units on the Map.....	11
Command Buttons.....	12
Navigating the map.....	12
Building Up Your Campus.....	14
Manufacturing.....	16
Engineers are people too.....	17
Marketers aren't people (well, okay, maybe).....	19
World Events.....	21
Direct Action Cards.....	22
Keyboard Help.....	24
www.stardock.com	25
Getting Updates.....	25
Technical Support.....	25
Walkthrough.....	26

Introduction

Welcome to Entrepreneur, the war game for the modern era. Entrepreneur is about global conquest. It will require the player to use his or her tactical, political, economic, and resource management skills.

The object of the game is to take over the world, region by region using superior fire power, superior strategy, and superior technology while eliminating your enemies in the process.

In case you are puzzled at this point as to the game's name, Entrepreneur isn't about taking over the world through violence. Indeed, there are no guns, no missiles, and in fact, no one dies in the course of the game.

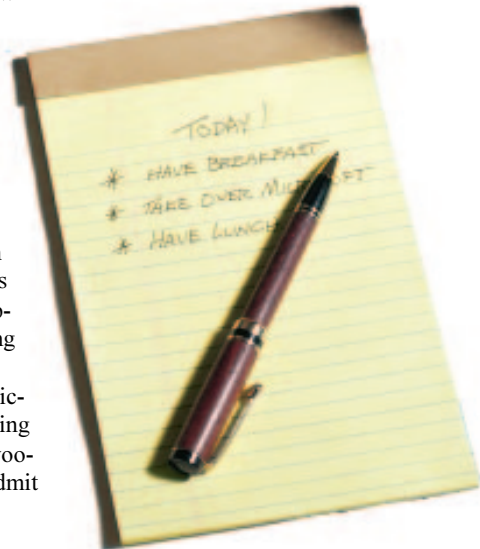
Today, there is war everywhere you look but not in the way you may traditionally view warfare. Wars now take place in the boardrooms of the world with companies vying for economic supremacy of their market.

One look at companies such as Microsoft, or IBM of old and it becomes clear that their goal is more than to just "survive". They have allies and enemies. Using their marketing, research, manufacturing, and engineering might, they try to expand and conquer the world to make the world safe for Microsoft or IBM or whomever the company in question is.

While economic warfare is certainly safer than conventional warfare, it requires just as much skill and determination to wage.

Entrepreneur is perhaps the first game to bring these elements to life in both an entertaining and educational package. We believe you'll discover that running a company is mostly based on common sense. You not only do not need to have a masters in Business to play Entrepreneur, it is expected that most people will be able to master Entrepreneur's basics in a short amount of time. We want to strongly express that this game is not designed to be some sort of business or economic simulator, it is a war game. But instead of being based on battle fields or in space, it is with products as your weapons and your sales/marketing units as your troops.

Building products, pricing them right, and supporting them with marketing isn't a voodoo art. While we freely admit



that Entrepreneur does not go into extreme depth (for example, the retail vs. wholesale issue isn't brought up here which we have been tempted to do since people always accuse commercial software companies of overpricing their software when in fact that a \$90 product actually sells for \$45 and the rest is mark up from distributors/resellers but that's another story...)

The Object of the Game

The object of the game is to conquer the world. You must become the undisputed market leader.

This means you must hold a certain percentage of the market depending on the number of competitors at the time.

This works out to be:

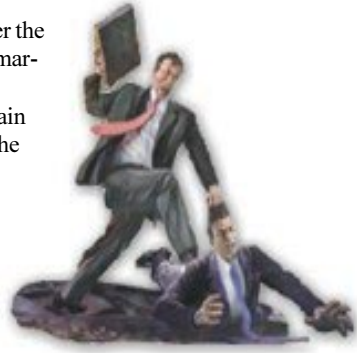
70% if there are 2 players.

65% if there are 3 players.

60% if there are 4 players.

55% if there are 5 players or

more.



System Requirements

Windows 95, Windows NT 4.0, or OS/2 Warp 4

DirectX (or DIVE under OS/2) supported SVGA video card

486DX4-75 (Pentium recommended)

12 MB RAM (16 MB recommended)

Sound card recommended

Internet connection or IPX network required for multi-player games(28.8k connection or better)

Double-speed or faster CD-ROM drive

Mouse

Getting Started

Starting A New Game

When you load up Entrepreneur, you are presented with these choices:

- Start a new company
- Continue your last company
- Load a previous company
- Create a Multiplayer Game
- Join a Multiplayer Game
- Star dock.net

Starting A New Company

So you've decided to go into business for yourself? When you choose this option, you are starting a single player game. Now you must decide what your specialty is:

Manufacturing

There's an old saying "Being there is half the battle." Manufacturing experts play to be in as many places as possible. Your laborers will be able to produce twice as many goods per employee when compared to non-manufacturer types. The game isn't won by having the best product, it is won based on who makes the most money and the person who can supply the world has a big advantage. General Motors would be a good example of a manufacturing expert.

Marketing

If you choose to play from the marketer's point of view, you're going to be playing to win by controlling perception. Your Marketers will be twice as productive which means you'll be able to create marketing campaigns faster and have more of them. Your technology may not be the best and you may have problems meeting demand but you will be the master at controlling the perception of your products, and those of your opponents. Microsoft is the classic marketing strong company.

Engineering

Choose Engineering if you want to play the game as someone who is good at developing new technologies. Your Engineers will be twice as productive which means you'll be able to research new technologies much faster. You may have problems supplying everyone in the world and you may risk being out-marketed as well. IBM is the ultimate example of an engineering firm.

Once you've chosen what your expertise is, you'll want to enter in your

name and the name of your company. From there, you'll proceed to the player list screen.

On the player list screen, you choose who you will be playing against. The computer players all of their own personalities (based on Stardock's advanced SDS/AI artificial intelligence engine). This means that each player will try a different strategy based on modeling successful human opponent strategies.

By clicking on the arrow buttons on the left you can choose to add or delete computer players from the game. When you are done, press "Start" and the game will begin.

Multiplayer Gaming outside Stardock.net

Local Area Network (LAN) games.

Starting a game on your LAN is the easiest way, just choose IPX as your join game and it will find other Entrepreneur games on your network. If you're creating a new game, simply choose to create a new game and wait for others to join. If you are running OS/2 Warp, you'll need to have TCP/IP installed on your LAN.

If you want to play a private internet game, you can do so by creating a network game and telling other players what your IP address is. If you are on a Windows 95/NT LAN, your game will be listed when your friends select the "Join" network game.

Stardock.net

Many games will boast that they can play on the Internet but most of them require you to jump through a lot of hoops to get an Internet game going. Entrepreneur has Stardock.net which is probably about as easy as you can get to find Internet games. Just logon to the Internet, start Entrepreneur, and click on "Stardock.net". From there, you will be able to talk to other players and join games. You cannot join



games in progress. Games that are grayed out are games that are in progress.

The left side of the screen shows all the people in your particular channel. If you are very new at Entrepreneur and the “Lobby” channel is relatively full, you might want to go to the “Beginner’s channel”. Please keep in mind that it’s no fun to be creamed by an expert. Many Internet games have become “un-fun” because experts will pretend to be new at the game and slaughter a newcomer. If you’ve become an expert, you’ll be able to find other experts in the other channel.

Dealing with Latency

Lag time or “latency” is the amount of time it takes for your computer to send data to another computer and get a signal back. If you are using a modem, a typical ping time is about 300ms. But sometimes, the Internet will just “Freeze” up for a few seconds. A few seconds is an eternity in an Internet game. If things get bad enough, the music might start to skip or things may slow down to a crawl (or even freeze). Don’t worry, your computer is not “crashed”. Just hit the Pause key to stop the game and let it catch up for a second and then continue. The further someone is away from you physically, the higher the chances of lag time. So before you begin to play people who are on another continent, be aware of these things. You can greatly reduce these affects by playing the game at “Normal” or “Fast”. Do not play at higher speeds than that unless you are very comfortable with your connection speed. Also note that Computer players tend to actually send out more data than human players. This is because, well, humans are a lot slower than computers at making moves. The computer players are thinking and acting all the time. They don’t forget to hire those workers to keep up with demand or to keep researching regions. So if you have 3 or 4 human players, get rid of the AI players if you can (again, unless you are pretty comfortable with your connection).

Please keep in mind that Stardock.net is a public forum where people from many parts of the world are on at the same time and are of different ages. Please keep in mind that there are real people behind those names. The anonymous nature of the Internet tends to make people forget that courtesy and kindness are still important traits.

Choosing your market

Entrepreneur only comes with the computer market but other markets will be made available shortly after release by Stardock, Stardock Developer Network members, and third parties in the form of Dynamic Industry Modules (DIMs).

Choosing a world

You can pick where you want to play. A list of different worlds are available to choose from.

Your First Game

Welcome to Entrepreneur

Okay, this is the tough part. This is one of those times we wish we'd cloned some already successful game, put on some neat graphics, and gone out the door since everyone would know how to play it. "Of course, the TAB key brings up the map in these games." Unfortunately, there's no other game quite like this so we'll have to go into some detail here.

You start the game with a single office which already has a garage. This is your base of operations. Because the world map has randomly generated statistics, starting in a third world region of the real world doesn't mean anything here as the poorest nation in Africa in the real world could be the best place in the world in Entrepreneur.

Understanding the map

The Entrepreneur map is divided into regions. Depending on which demographic (the buttons at the bottom of the screen) you have selected, the regions are color coded to reflect the data of that demographic. You click on a given region to select it which brings up its statistics into the two windows on the right.

Not only are the regions color coded, they may have an icon of some type on them. These icons can include:

Office Sites

This is where you or your opponents have their factories, research centers, marketing offices, etc. It is important to be market leader in a region that you have an office in since it greatly affects morale (there's a 30% decrease to morale if you aren't #1 in a region).

Distribution Centers

Getting into distribution is very important in any industry. Your sales executives are in charge of making sure your product is available in the region it is in and 2 regions distant in every direction. However, being the market leader in a region that has a distribution region will improve your adjacency bonus. You see, being market leader gives you a 10% bonus to your demand value (which we'll discuss later) in every region adjacent. But being the market leader in a region with a distribution center gives you a 30% bonus which can be very important if you fall behind technologically and need to use marketers to capture that region.

Special Resources

Some regions have a special characteristic just as the real world. Any large

corporate executive can tell you that sometimes it doesn't matter how much you sell but where you are selling it at. Special resources are primarily used for Direct Action Cards (more on that later) In Entrepreneur, there are 5 special resources that you can use:



Enhanced Production Region. Regions with this icon have enhanced productivity. Direct Action Cards that affect your laborers or ability to build will require that you hold regions with this icon.



Enhanced Marketing Region. Direct Action Cards that affect your ability to get in good with the media will use these.



Enhanced Researcher Region. Direct Action Cards that improve your research, steal technology, or sabotage research will require that you hold regions with this icon.



Lawless Regions. By holding these regions, you will have access to certain types that will be able to do very destructive things to your opponents.



Politically Enhanced Regions. Regions with this symbol are places where local or national capitals are. Direct Action Cards that get you unfair favors and bonus's will require that you hold regions with this icon. Similarly, Direct Action Cards that allow you to do unfair things to your opponents require these regions as well.

Demographics

The strategic way of winning Entrepreneur is to understand what people want and making sure they get what they want. The buttons at the bottom of the map screen allow you to view the map in different ways that will aid your decision making.

Market Leader

The market leader demographic allows you to see who is #1 in a given region. Unlike traditional war games, winning a region isn't an all or nothing proposition, it just means that that player is making more money in that region than anyone else. What's the advantage of being the market leader then? First off, it gives you an advantage for sales in adjacent regions. Secondly, if there are any special resources in that region, they are available to you. The color of the region corresponds to the player's chosen color.

Rank

Making sure your product is getting as much market penetration (i.e. how available it is) as you want is very important. By clicking on rank, you can see where your product is available. The lighter the color, the more available it is.

Wealth

There are two important factors in how much money you will make in a given area. Their economy and their wealth. The wealth of a region is essentially how much potential money there is to be made there. Economy is how rich or poor the people there are. China would be a good example of where there is a lot of money to be made but the people there are poor. You can combine the graphs together by clicking on both light-radio buttons. Be wary of doing this though, a lot of new players will try to just sell to the place that has the best average of both traits. If your product is relatively inexpensive, sell it to places that have a high wealth value. If your product is expensive, concentrate your sales executives in the high economy regions. Most players won't be able to really meet demand so there is a strategy in picking the places where you will be most competitive. As with all graphs, lighter colors are better.

Share

To see how well you are doing from a market share standpoint, click on the share button. The lighter the color, the better your market position is.

Bonus

The bonus demographic will allow you to see how entrenched you are in a given region thanks to adjacency bonus's.

Region

Possibly the most important demographic in the game, the region will tell you what traits they value the most. The longer the bar, the more they care. For example, let's say you're general motors and the computer player is Ford motor. Your car has a great engine and thus is a high performance car but is somewhat weak on its styling. If you're trying to sell to a region that values styling and Ford has a product that is higher in that trait, they'll probably sell better even if their product is somewhat more expensive. You can use marketing campaigns to improve the perceived styling of your product (which will help) but this only goes so far.

Site

When it's time to build a site you need to decide what you plan to do there. The quality of the regional labor can greatly affect the productivity of your site. Regions with a high labor value will allow you to manufacture products faster. Similarly, regions with a high engineering and marketing score will yield better employees of that type. The recreational value, believe it or not, is possibly the most important trait since that indicates how nice of a place the region is. The nicer the place, the easier it is to keep your good employees and keep morale up. The cost of living affects how much your employees cost. These attributes can make up to a 30% difference in your productivity so pay heed to them.

Units on the Map

Sales Executives

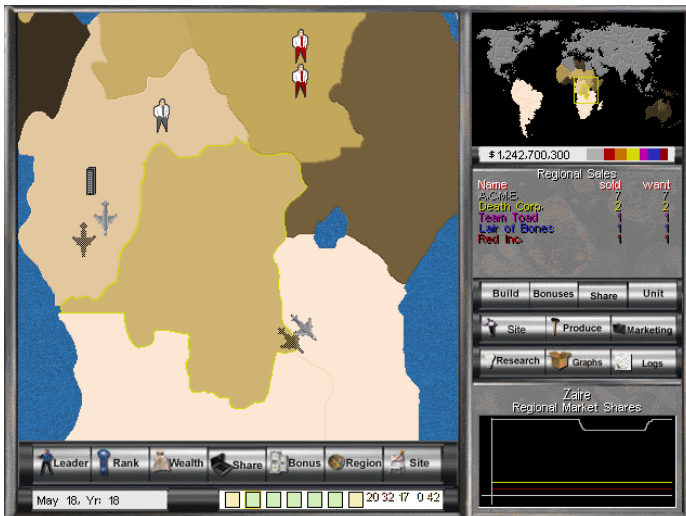
Your sales executives are essentially the economic version of your armies. They are the ones who make sure your products are available in the region they are in and 2 regions out in every direction. When you click on your sales executive (the one that has your color), it'll say "Yes?". By right-clicking on a destination region, your sales executive will move to that destination. Choosing where to move your sales executive is crucial to your success. Use the demographics screens to determine the best place to move your sales executives. Your company automatically gains a new sales executive at the beginning of the year if your company has grown enough in revenue. You can click on your opponents' sales executives to get an idea of what they are selling and how much they are pricing it for. The market penetration that sales executives give does not come instantly. It takes 3 years for you to gain full market penetration so don't expect to jump into a region with the wonder product and begin making the big sales.

Marketing Campaigns

Marketing Campaigns behave as the "commando" troops for your company. You send them to regions of the world that you feel you absolutely must control. To use one, simply click on one and send it to where you want it to go by right clicking on the destination. You create marketing campaigns by building a marketing office and hiring marketers to create the campaigns. You can hit F1 for details on each unit.

Your Site

The miniature version of your office site on the map is where you have a site. You can build new sites by clicking on the "build" button. Each new site



costs more to build than the last one (due to higher overhead of inter-site communications). The small stick-like buildings on the map that are color-coded represent your opponents' sites.

Mini-Modes

Bonus

The Bonus button will remind you of how much of an advantage each company has in a given region due to adjacencies. If you think you should be winning in a given region, this is a good piece of data to look into.

Build

The Build button will give you the option of constructing a new office site in the region currently highlighted.

Share

The share button gives a statistical analysis of supply and demand for all of you and your opponents' products. Keep in mind these are number of units demanded and sold. Region ownership is based on revenue generated so if you are selling a product for \$1000 and your opponent is selling his for \$2000 you must sell over twice as many units to be #1 in the region (not to mention that region ownership is based on the past 52 weeks).

Units

The unit button will list the units currently in the region.

Command Buttons

The command buttons take you to the various screens in Entrepreneur.

Site

The Site buttons takes you to the site screen from where you can build new buildings as well as hire/fire employees.

Produce

This will take you to the production screen from which you can set your prices and see what the supply and demand of your products is.

Marketing

Once you build a marketing office, the marketing button will appear. This button will take you to your marketing office from which you can create marketing campaigns.

Research

Once you build a research office, this button will take you to your research center which allows you to improve your products.

Income

This button will take you to a line graph of how your income has increased over time versus your competitors.

Expenses

This button takes you to a pie chart graph which shows where your money is being spent.

Navigating the map

To get around the map, you can move your mouse to the edges of the screen. OS/2 users running the windowed version can move their mouse to the edges of the window to get the map to scroll. You can also navigate around the map by clicking

How much money you have. Keep an eye on this.

on the mini-map on the top right hand side.

\$159,653,200

This is the market share bar. Your color on here represents how much (out of 100%) of the world's market you have. When someone has more than half of it, you should worry!

The Bonus mini-mode lets you know how much of an advantage you and your competitors have in a given region.

The screenshot displays a game interface with several key components:

- Main Map:** A large map showing a region with a yellow boundary. A character icon is positioned within the boundary. A satellite icon is visible in the bottom right of the map area.
- Mini-Map:** A smaller map in the top right corner showing a world map with a yellow box highlighting the current region.
- Market Share Bar:** A horizontal bar at the top right of the mini-map area, showing a color-coded bar representing market share. The value \$159,653,200 is displayed to its left.
- Regional Adjacency Modifiers:** A list of modifiers for the region, each with a percentage value:

Modifier	Value
Death Boy	100%
Mitrosoft	100%
lty Bitty Machines	100%
Last	100%
ndi	100%
Pear	100%
General Rotors	100%
- Action Cards:** A row of buttons labeled "Build", "Bonuses", "Share", and "Unit". Below these are buttons for "Site" and "Produce".
- Research and Logs:** Buttons for "/Research", "Graphs", and "Logs".
- Region Information:** The name "Paris" is displayed above a pie chart.
- Pie Chart:** A pie chart showing market share distribution. The largest slice is colored red, representing the leader.
- Revenue:** Text indicating "52 Week Gross Revenue".
- Bottom Panel:** A navigation bar with icons for "Leader", "Rank", "Wealth", "Share", "Bonus", "Region", and "Site". Below this is a status bar showing "Jul 5, Yr: 19" and a set of icons.

Direct Action Cards. Click these to perform an action on yourself or an opponent.

The leader demographic will display your market share as a pie chart. The company with the largest slice is the market leader of that region.

Your Office

Building Up Your Site

Your office site is where you build up the infrastructure necessary to conquer the world. By clicking on the blank areas and then pressing the upgrade button, you can (if you have enough money) build new buildings or upgrade existing ones in order to increase productivity and make room for more employees. At the bottom right you can see your morale. If you go in debt, company morale will start to go down as people begin to worry about their jobs. If your morale goes to 0, you go out of business. Not being the market leader in the region your site is located will also lower morale. Luckily, you can improve your morale by building recreational buildings (or at the very least making sure you build in a decent recreational area).

This section will discuss the various buildings.

Factories

Your garage (which can be upgraded to a factory and beyond) is where your products are manufactured. By single clicking on the building, you can hire and fire employees by adjusting the slider control. The little red area on the left (where you hire/fire employees) displays the minimum number of employees you have to keep on hand to function. If you double click on a building you are taken directly to that building's screen (if applicable).



Sales Office

Initially, your site will only be able to sell to the region that it is in. In effect, your office site will behave like a non-mobile sales executive except it only sells to the region it is in and not the surrounding regions. Sales offices will increase the radius of sales. Each upgrade to the sales office increases the radii of surrounding regions to which you can sell without a sales executive (up to a maximum of four regions away).

Research Office

Your research office is where products are improved as you invent new technologies to introduce to your products. By single clicking on it, you can hire/fire engineers by moving the slider on the left side of the screen. Double clicking

on the building will take you to the Engineering screen.

Marketing Office

By building a marketing office, you gain the ability to create marketing campaigns (after hiring marketers of course). As you create marketing campaigns, the number of marketers necessary to maintain that campaign increases. Double clicking on the building will take you to the Marketing screen.

Happy Fun Land

Recreational buildings you create allow you to increase morale at your site. Though the buildings may seem expensive, this is quickly offset by the gains in the productivity of your workers. And remember, do not taunt Happy Fun Land!



Manufacturing

Meeting Demand

There are two basic ways of meeting demand: Hire or fire employees or modify your price. The Manufacturing screen allows you to analyze the demand of your product and change prices. By double clicking on the labor points button at the top right of the screen you can return to the site screen.

Pricing your Product

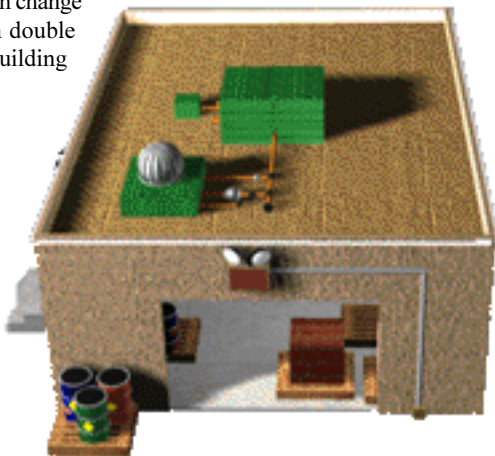
The entry field on the right allows you to change your price. Simply enter the price you want and press the [Enter] key to make the change official. Be careful with this as you need to make sure you have enough gross profit to cover your expenses. The gross profit of your product is merely how much it takes to build it and does not take into account labor, marketing, engineering, or other costs.

How to hire/fire people quickly from this screen

If there are any flaws of the user interface of Entrepreneur, this is it. You cannot hire or fire employees on this particular screen. The manufacturing screen's only user input is in changing the price of the product which will allow you to observe changes in demand.

But there was a method to our madness, we wanted to discourage people from using the hiring and firing of employees as just another slider. If you're grossly not meeting demand or grossly over producing, then adjusting your labor force makes sense, but if you're close to matching demand, then modifying the price makes the most sense.

The user interface does allow you to quickly go back and forth to the site screen -- where you do hire/fire employees. Double-Click on the top right hand button that lists how many labor points you have and you'll return to the site screen. From there, you can change your labor force and then double click on the appropriate building you want to go to.



Engineering

Engineers are people too

The Engineering screen is easily the most complex of the screens in Entrepreneur. There is a lot of data to digest on this screen. You can return to the office site by double clicking on the engineer points button on the top right of this screen.

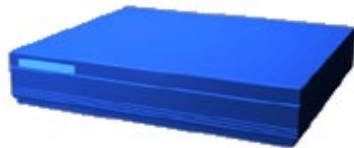
User Interface Basics

The basic concept of the engineering screen is to improve the traits of your product. Your product is made up of different components with each of them adding different levels of quality to your product. For example, in the computer market, the CPU is the most important factor in determining the performance of a computer while the video card adds some but not nearly as much to the overall performance of your computer.

To improve a trait, first make sure you've hired engineers, next move the sliders on the bottom to the right. The more you move the slider, the better that trait will become but the longer it will take to get there. There is considerable overhead in starting up a project so the longer the bigger the improvement, the greater the efficiency. Of course, keep in mind that a 5 year project won't do you any good until the 5 years are up by which time you could have the best product but be out of business.

The Sliders

As you move the sliders, you'll see a red color grow behind that slider and others. This represents where research is occurring. Different traits are related to other traits in different ways. It was decided that instead of having the related sliders move to the left as you moved the one you were on to the right, we would assume you would want to try to keep the traits of the others the same. However, if you move the other sliders to the left which have red on them, your research time will decrease. Normally, it is the price of the component that will tend to want to increase. If you increase the cost to manufacture, you usually can bring down the time to research. Similarly, in the computer market, you can improve ease of use on your OS by decreasing the performance requirement on it.



The Research Queue

No one wants to have to keep coming back to the screen every few minutes so a research queue was created. As you improve your product, you add it to the research queue. You can remove products from the queue as well as move them up

or down in the queue.

Space

In most markets, there is a limit of how much stuff you can cram into the container. Sure, you'd like to make the world's most powerful computer and stuff it into a laptop sized container but in reality you can't because of the size of the components. The bar across the middle of the screen represents the space of your product. There are 3 colors (actually 4 if your components use up too much space) to keep in mind. The red color on the left is how much space that particular component is using (if any). The yellow is how much space the components together are using. The green is how much space the product's container (the case in the PC market) has available. If you want to decrease the size of your container, you'll need to put some research into minimizing the space of your components.

Other Traits

In some industries, you can also modify the actual container the product is in by clicking on the actual product. In the computer industry, for example, you can click on the computer itself to change what type of case it uses. The smaller the case, the higher the aesthetics value is. Look on the left side of the screen to see how your product is doing overall.



Marketing

Marketers aren't people (well, okay, maybe)

In essence, marketing is about controlling perception. The marketer believes that perception is reality. However, if you ever spoke to a marketer, he or she would likely say that their job is “educating the public”. The perception is reality mantra turns out to work pretty well in practice. For example, in the PC industry some years ago, the Intel Pentium chip had a floating point bug that caused calculation errors in extremely rare cases. In practice, no one ever saw this problem or would be affected by it (or at least so few people that it didn't matter). Unfortunately for Intel, they lost control of perception which rapidly create a scenario where Intel ended up giving a free replacement to anyone who asked in order to maintain the perception that they aren't a bunch of greedy corporate types.

Car commercials rarely focus on what the car actually does. Instead, they try to create manage the perception of what type of person uses the car. Every market has its own style of trying to manage perception but when it gets right down to it, it is perception, not reality that is being manipulated.

Entrepreneur works the same way. On your site, you can build a marketing office. When you hire marketers, they add marketing resource points to your company's resource

pool. You use these resource points to create marketing campaigns from this screen. But here's where things get tricky, when you create a marketing campaign, it doesn't just go off and do its own thing, you have to keep marketers on that particular campaign. In other words, as you create campaigns, some of your marketers are used up in maintaining those campaigns leaving fewer to create new ones. Eventually, all your marketers will be used up in maintaining your existing marketing campaigns leaving not free ones to create new ones. At that point, you either have to build more marketing buildings to hire more marketers or kill off some of the marketing campaigns already in play.

The number of resource points you have is based on how many marketers you have plus other factors that affect the productivity of your marketers (such as morale). You cannot fire the marketers that are maintaining your marketing campaigns so if things get bad for your company, you'll need to terminate those campaigns first and then downsize those marketers!

When you decide to create a marketing campaign, you have to decide what kind of campaign to create -- a positive one or a negative one.



Positive Marketing Campaigns

Positive marketing campaigns are the most common and least-risky to do. In essence, they are campaigns designed to improve the perception of a given quality of your product. Of course, there are different levels of marketing campaigns. Each level is more powerful than the last but more expensive to create and maintain.

To get access to the higher levels of marketing, you have to upgrade your marketing building. Negative marketing campaigns require one level higher of an upgrade to create than a positive one.

Negative Marketing Campaigns

Negative Marketing Campaigns are more powerful than positive ones but also much riskier. With a negative campaign, you target a specific competitor and depending on what level the marketing campaign is, damage the perception of that opponent's products. The risky part is in the fact that you're not actually helping yourself, just hurting a specific competitor. If you pump enough money into a negative campaign, you can eliminate your opponent in a region of the world. But if you're not the #2 company in that region, that competitor is merely replaced by another.

Strategies for Marketing

While entire books have been written on this topic, in Entrepreneur, it is effective to use your marketing campaigns like you would commando units. Send them to regions that you feel you strategically must have. Whether that be regions in which you have offices in, regions that have special resources that your direct action cards require, regions that are very wealthy and economically strong, or enemy regions in which you want to hurt your enemy's morale, the decision is up

Game Speed is now Slow.
Game Speed is now Slowest.

32569 Points

Positive Negative

Marketing Campaign

Type: F.U.D. Campaign
Effect: - 30 %
Time to launch: 45 weeks
Launch cost: \$ 10 Million
Upkeep: 6000 Marketing Points

Fear, Uncertainty, and Doubt. We'll leak rumors and supply inuendo to our competitor's customers and to the media at large. Some in the press won't bother to fact find our hearsay and print our manufactured rumors as if they were fact. Cheap and effective.

Maintenance

Target Select

- Microsloth
- Itty Eitty Machines
- Death Corp.
- Team Toad
- Brad Corp.
- Lair of Bones
- Red Inc.

Argentina Performance Fire

Mali Ease of Use Fire

Argentina vs- Microsloth Fire

Angola Ease of Use Fire

Argentina Ease of Use Fire

Ready to Create

Create Campaign

May 28, Yr: 15 \$1,189,925,700 Done

World Events

Losers sure are lucky!

Well, at least they are in Entrepreneur. A typical Entrepreneur game may last 20 to 30 game years. During that time, a lot of important world events may occur that will affect the course of the game. Strangely enough, events tend to work to help the company that is in last place or hurt the companies that are leading. A typical example would be an economic recession that seems to be at its worst in the regions that the leader is making the most money. An economic explosion, on the other hand, would seem to take place more often than not in regions where the companies that are hurting are still leading in.

There are lots and lots of different events that occur in the game and many you won't see until after playing the game for many months. Some events may just give government grants to a particular player (which is a pretty straight forward monetary transfer) all the way to more subtle ones such as an explosion that takes out one of your buildings.



The Look and See button will take you to the region that a given card has affected.

Direct Action Cards

Doing unto others as you wouldn't want them to do unto you

No game or simulation can simulate 100% what the real world behaves like. Entrepreneur is a corporate conquest game that tries to favor action over having too many "realistic features". For example, in the real world companies routinely try to lure away key executives from their competitors. This has a devastating effect on the competitor since "brain drain" is major reason for a company to lose its competitive edge. But in a game or simulator, how does one go about simulating this? Do you have a game screen that takes you to a special "Trip to Seattle on the corporate jet?" or a list box listing all the different gifts and signing bonus's you could give to a potential executive to get him or her to leave your competitor? And if you did put all this into a game, would you not then open the door to others features that many would consider just as relevant such as buying up other companies, government grants, lawsuits, patents, etc.?

Entrepreneur's answer to all this comes in the form of Direct Action Cards. In a nutshell, here's how they work: Each

card allows you to do a specific task in the game. To use that card, you must be the market leader in regions that have special resources (the regions with the resource icons on them). At the top of the card, you can see what resources this card specifically needs.

The types resources the card requires to use will depend on what type of action the card does. For ex-

ample, exploiting child labor would require you to be the market leader in a red \$ region which signifies that it is a very poor region of the world.

You begin the game with 3 Direct Action Cards. At the beginning of each year you will receive a new direct action card up until you obtain 7 (after which you won't get any more until you have used some).

At the beginning of each year, the regions with special resources that you

Resources required. Grayed out ones mean that is how many you need. The number represents the bonus number you have (i.e. extra resources -- higher the better).



are the market leader in go into your resource pool. When you have enough resources to use a card, it will light up and allow you to use it.

Be careful how you use the card, however. If you're in the lead, for example, you probably don't want to use cards that your opponents will get afterwards.

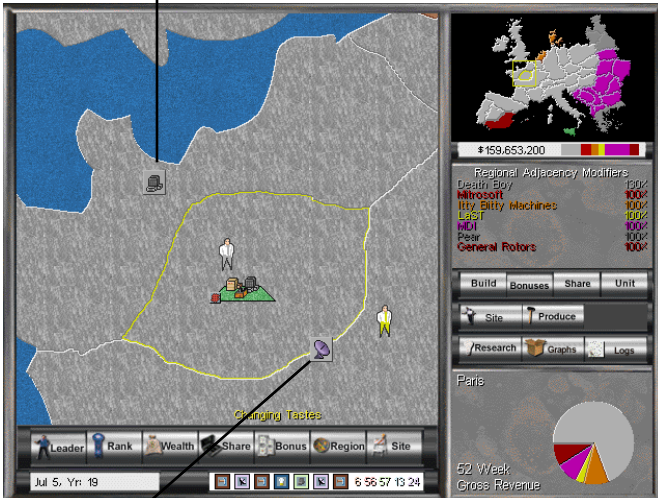
If you're losing, your best bet is to try to pick on the winner if possible.

At the beginning of the year, any resources in regions where you're the market leader go into your resource bank.



You get a new direct action card at the beginning of the year. When you have enough resources to use it, it will light up.

This region has a resource. If you're the market leader, it will go into your resource bank at the end of the year.



This region has a media center resource.

Keyboard Help

Key	Function
Esc.	Options Screen
F1	Help Screen
F2	Context Sensitive Tutorial
F5 or Ctrl-W	World Map Screen (main)
F6 or Cltr-S	Site Screen
F7 or Ctrl-P	Production Screen
F8 or Ctrl-M	Marketing Screen
F9 or Ctrl-R	Research Screen
Tab	Send message to other players.
Pause	Pause the game
+	Speed up game
-	Slow down game

www.stardock.com

Getting Updates

While we do not expect that you'll need any updates to Entrepreneur, you may want to take advantage of the free updates that Stardock will provide over the course of your use of the game.

At <http://www.stardock.com> you'll find lots of add-ons, links to user based web pages and a lot more!

Technical Support

Technical support can be found by emailing support@stardock.com. There is a website interface for sending in queries that will allow you to obtain the fastest response times:

<http://www.stardock.com/techsupp/preport.html>

Common Problems

My Mouse is moving very jerky on the screen!

If you're running Windows 95 or NT, your graphics card may have limited DirectX support. To work around this, go to options and choose the Software cursor. If you're running OS/2 Warp, you will need to change your mouse cursor to a black and white cursor or update your DIVE.dll (in `\mmos2\dll`) to one that is newer than 11/96 (which can be found on our website).

Stardock.net just hangs (or gives an error) when I click on it!

Sometimes the Internet has a hiccup where certain servers are not available for periods of time. Just try again later. You can also try pinging ent.stardock.com and see if there is any response.

My music begins to skip and then the game seems to freeze when I'm playing an Internet game!

If latency gets bad enough, your send buffer will get full. Hit the pause key and wait for everyone to catch up before continuing. Try playing the game at a slower speed (using the + or - key).

My Internet performance is just terrible!

Make sure you're not running something in the background. Also, if you are running OS/2 and using a third party dialer, make sure it is getting as much priority as possible (or use the standard "dial other internet dialers when running Entrepreneur).

I keep going out of business!

Visit <http://www.stardock.com/ent> for a list of strategy websites that will help you out.

Walkthrough

Starting the game

The only real decision that needs to be made prior to starting the game are what type of specialty you will be: manufacturing, marketing, or researching. Each specialty is twice as efficient at its job than the players of another specialty. Depending on your strategies for playing the game, you may decide that one specialty better suits your style of gameplay.

Getting oriented

Take a quick look at the “popup” help items on the main screen. These will only appear by default on the easiest level, but then can be recalled any time by hitting F2. Similar screens will also appear in your marketing, site, research, and production windows(more about those later).

Use the +/- adjust the speed of the game. Initially, Fast or Faster are probably the best choices, though you’ll quickly find that multi-player games become a lot more challenging when playing on Fastest or higher. Press the Pause key(upper right of your keyboard) at any time to pause the game. Press it again to resume play.

Let’s Play

Click on a region adjacent to your initial starting region and press Investigate Region in the right-hand panel.

Click on the Site button on the right-hand side(not the one toward the bottom) to enter the Site screen.

Site Screen

Click on your garage. This is where you initially manufacture your product. Use the slider to hire some workers(20 should be good to start).

Click on the empty “plot” in the upper-right of the site map. This is where your research buildings are built. Note in the top display that it will cost \$2 million for the next upgrade. Upgrade the building(which actually builds it in this case).

Double-click on the garage to enter the Production Screen.

Note: once a building is constructed, you can double-click on it to enter the corresponding screen for the building(if available).

Production Screen

The production screen is where, in many ways, whether you win or lose the game is decided. Set your prices too high and demand will fall off. Sell an inferior product, when compared with your competition, and watch the toads conquer the world as your corporation goes bankrupt.

Since all products are about equal in the beginning of the game, you can overcharge a great deal. Set the price to \$6500 (be sure to hit Enter to make the change official). In only a short time (In terms of game years), you will have to return to this screen and adjust your price to be more competitive. But, for the initial stages of the game, he who has the most money comes out ahead.

Note the demand on the bottom of this screen and the corresponding figure for how many units you are producing each period. Overproducing is not a big factor initially, but you'll want to keep an eye out so that the amount you are supplying is relatively close to demand.

To get back to the Site screen to adjust your production (if desired), click on the little "button" in the upper-right corner of the screen.

Back on the Site Screen

By now, your Engineering Lab should have been constructed. However, we need to check some things out before hiring any workers (why waste the money on their salaries when they are not doing anything?).

Click on the lower-left "plot" and start building your first Marketing Office.

At this time, you may want to hire an additional 5-10 workers, on the expectation that demand has increased while you have been working with other things.

Return to the Main Map by clicking on Done or on the mini-map near where your site is highlighted.

Back on the Main Map

By now, you've investigated two regions (your initial region and the one you started investigating before going to the Site Map). Click on another region adjacent to your first and investigate it as well.

If this is your first time playing, now might be a good time to pause the game while you learn what the inhabitants of these regions want.

Click on any of the regions that you've currently researched.

Click the Region button on the bottom toolbar. The window pane in the lower-right of the screen contains the Regional Desires for that region (Reliability, Performance, etc.). By researching these traits, you can improve your product and make it more attractive to different regions. The longer the bar in this window, the more the regions desire that attribute (w/green bars being the most desirable).

Check the other regions you've investigated as well. Their desires are relatively unimportant during the first year or two of the game (since your products have not been enhanced yet), but you will quickly find that they will buy a lot more of products that they like (vs. your competitors).

By now, you should have investigated your third region (if you did not pause the game-if you did, unpause now). Start investigating a fourth region.

Goto the Production Screen by clicking the Produce button.

Production Screen

How is your demand relative to supply? If you are under or overproducing and click the button at the top of the screen to jump to the Site Map.

Site Map

Adjust your production as needed based on the info you just got off the Production screen.

If you have more than \$3 million, now might be the time to upgrade your Garage to increase your manufacturing capacity. If you do

not do this now, keep in mind the fact that you will need to upgrade at some point. When is now up to you, but the sooner the better if your demand is higher than you can supply.

Another choice that can be made now(or later) is whether to invest \$1 million in a Sales Building(center-top “plot”). This building functions much like your salespersons on the main screen(more about them in a minute). By building Sales buildings, you can sell to the regions surrounding your site without needing a sales executive in the area.

Click on the Engineering Lab and hire some workers. Then, double-click on the Lab to enter the Research Screen.

Research Screen

The Research Screen is where your engineers work on upgrading components of your product. For the default computer market, there are seven components(plus the case) that have attributes that can be improved via research.

Some components have a larger effect than others on specific attributes. For example, improving the performance of your CPU(the “chip” to the left of the case) will boost performance the most. Similarly, increasing the ease of use of the operating system(the OS 4 box on the right) will help lift the overall ease of use of the product.

Researching product upgrades is not an exact process. Since different regions in the game desire different things(remember the Regional Desires indicator on the main map?), improving one aspect of your product at the expense of another could cost you later in the game. Juggling all aspects of the product, while simultaneously competing marketing the product, investigating new regions, upgrading your sites, and competing against other players may seem daunting at first, but you’ll quickly get the hang of things.

For now, recall the Regional Desires of the regions around you. If, for example, they really liked a product’s Aesthetics, increase the Aesthetics of a component and hit the Research button to start your engineers working.

Initially, since you have few researchers, you can only increase the attributes by a small amount without requiring enormous amounts of time. While you are learning, you may want to limit individual research

projects to somewhere between 15 and 30 weeks duration. Later, as you upgrade your engineering labs, you'll be able to research things more quickly.

If you start researching something and change your mind while it is still in the Research Queue(the listing to the lower-right), select it and hit the X to prevent that particular project from ever being started. Note that you cannot cancel the current research project, so be sure not to start one that will take many years.

Return to the Main Map by clicking Done.

Main Map

By now, the sales executive in your home region should have a little number next to him. This represents the number of sales executives that are in a particular region. As your corporation increases in revenue earned, you will gain additional sales executives.

Click on your sales executive. Notice how the display on the right changes to display him and the attributes of the product he is currently selling. If there is more than one sales executive in a region, you can select them simply by clicking on them(notice how the graphic becomes highlighted). Any selected sales executives or marketing units(more on them in a minute) will move to any region that you have researched when you click the right mouse button(RMB) in that region. Try moving him to another region now. Your sales executives will sell to the region they are currently in as well as surrounding regions, though at a decreasing level of effectiveness the more distant those regions are.

Now might be a good time to click the Share button on the right. This will show you who is selling products in the current region, the number of products sold, and the number of each product demanded by the population. If the number sold is less than the number demanded, you may need to increase production. This might also be a good time to consider dropping your selling price as you research cheaper and cheaper components.

Start investigating some additional regions. Notice that they become more expensive to research the further they are from your site.

Now we come to the most misunderstood, but most powerful, units in the game--marketers.

Return to the Site Map, hire some marketers, and enter the Marketing screen (remember how to get to screens from the Site Map)?

Marketing Screen

Here is where you will develop the marketing campaigns to assure your utter domination of the world. As you upgrade your marketing buildings, additional types of marketing campaigns(positive and negative) will become available.

For now, think about the Regional Desire of the areas around your initial site and develop a radio campaign based on the desired attributes. Click on the attribute on the left and Create Campaign on the right. Go back to the Main Map and continue investigating regions, adjusting production, and researching new components until your first marketing unit appears(it will look like a small card in your home region).

Click on this marketing unit and move it to a neighboring region by using the RMB on the target region(just like your sales units).

Conclusion

By now, you've gotten a firm start on the basics of Entrepreneur. Practice makes perfect. As you continue playing, you will quickly get the hang of manipulating all the various facets of the game.

Other Resources

Visit <http://www.stardock.com> to find links to sites dedicated to the strategy of Entrepreneur.

Entrepreneur is a game that is very easy to play but very hard to master.



Stardock Systems, Inc.

17292 Farmington RD.

Livonia MI 48152

United States of America