

IBM Network Station Family of Thin Clients
Access for today, flexibility for tomorrow



Java for Network Station Manager V2R1

September 1, 1999





Java 1.1.8

Final release for Java 1.1.*

- ▶ 1.2 is not yet stable and has performance problems therefore not suitable for deployment in the Enterprise

• Components of the V2R1 Java Environment

- ▶ Java Plugin 1.1
- ▶ JFC 1.1
- ▶ javax.comm 1.1
- ▶ Internal JDK support
- ▶ Multiple JVM support
- ▶ Desktoplauncher for applets
- ▶ Beta JVM enablement
- ▶ Scalable Font support





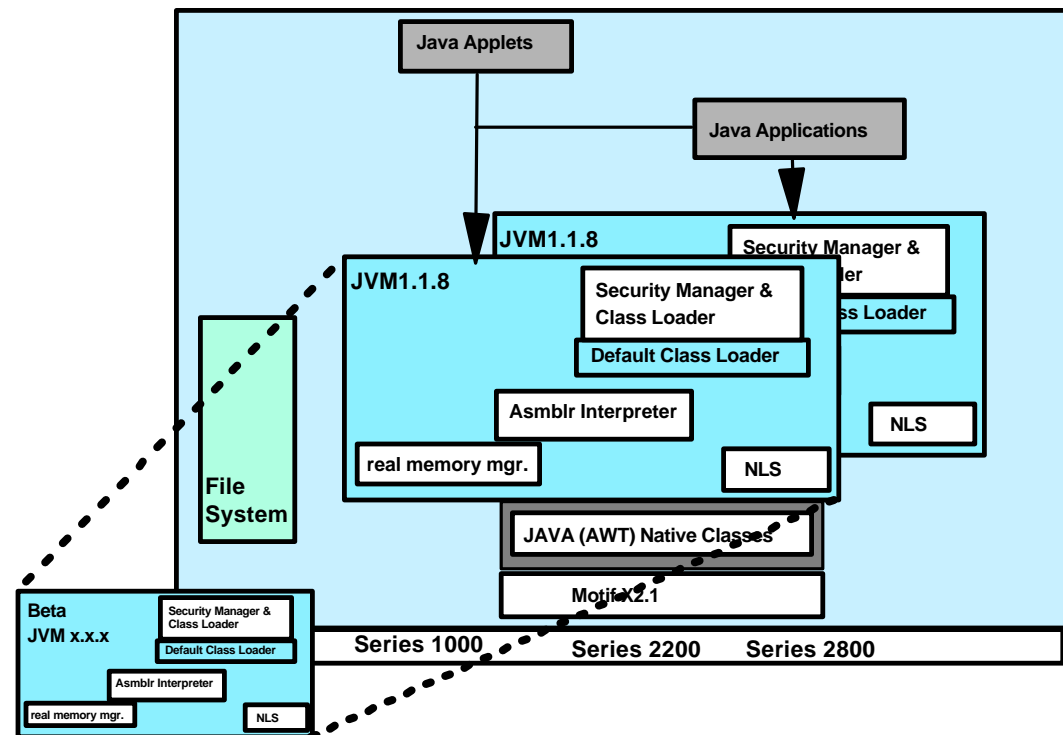
Java Limitations & Restrictions in V2R1

- **No JITc currently delivered in product**
 - limited utility to video manipulation applications
 - native JMF implementation will diminish need
- **Currently, no explicit Java console**
 - Java must be started in Advanced Diagnostic
- **Applets run in a single JVM**
 - to reduce overhead, applets run in the same JVM
- **Java Plugin does not support all Netscape JVM capabilities (per JavaSoft implementation)**
 - no LiveConnect
 - no https
 - no automatic proxy setup
 - no Socks



Beta JVM

- Provides capability for IBM to deliver a single concurrent JVM
- Install has created a single 'beta' directory along with J118
- Select using the environment variable \$(JAVA_LEVEL)

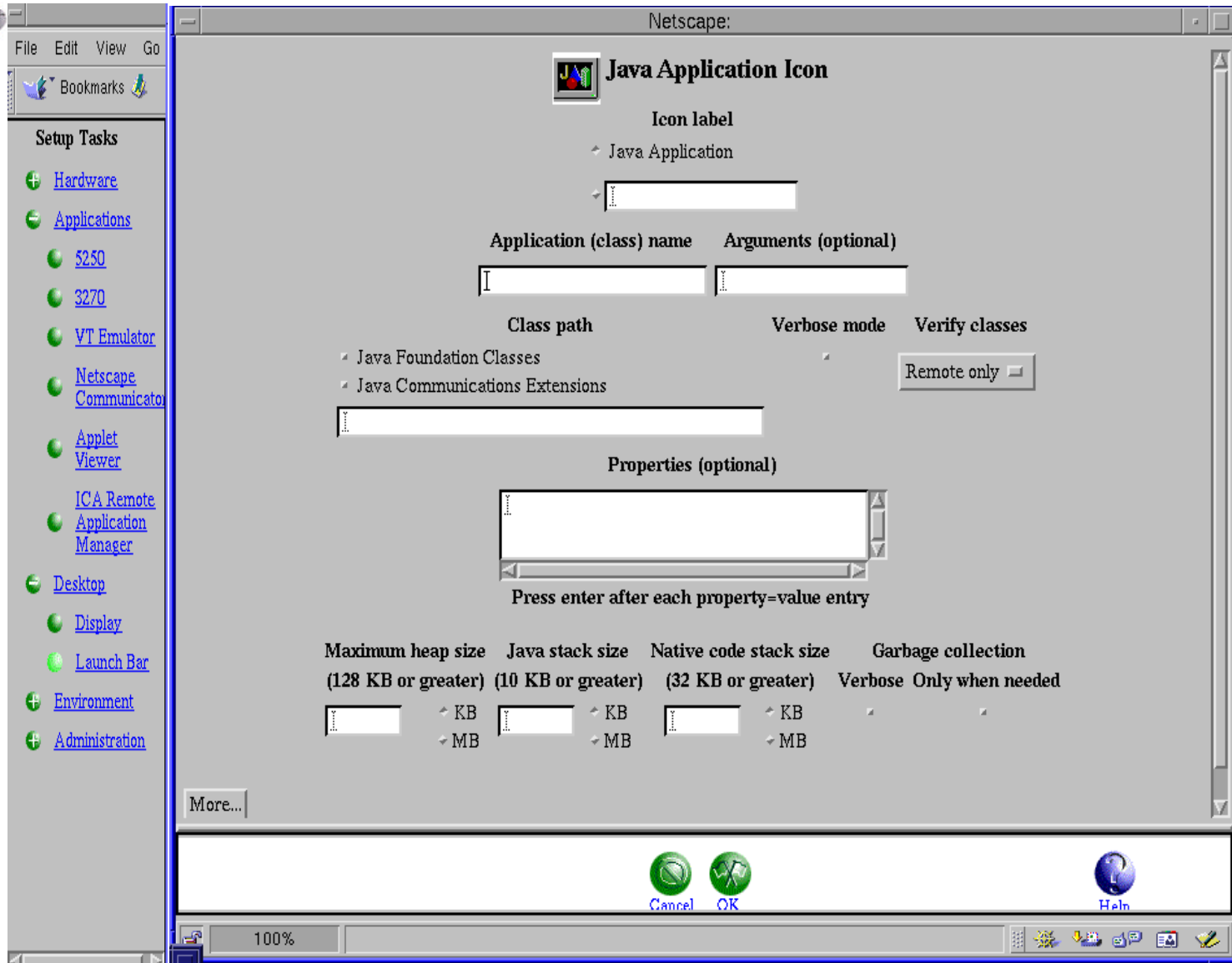


So what is under the hood?

commands shipped

- **javac** - compilation of Java programs
 - **jar** - packaging up class files
 - **javakey** - signing jar files
 - **rmic** - compilation of classes for supporting RMI
 - **rmiregistry** - daemon to support RMI services
 - **serialver** - display version number of a class
-
- **although not shipped, debug versions of these tools are built for development and debug**
 - **Commands must be started from Advanced Diagnostic window currently**

Configuration through NSM



Configuration with NSM2

Netscape: IBM Network Station Manager

File Edit View Go Communicator Help

Bookmarks Location: <http://9.5.151.242/networkstationv2/nsmgr.htm> What's Related

Setup Tasks

- Hardware
- Applications
 - 52.50
 - 3270
 - VT Emulator
 - Netscape Communicator
 - Applet Viewer
 - ICA Remote Application Manager
- Desktop
- Environment
- Administration

RCHAS111.RCHLAND.IBM.COM

Java Applet Viewer Settings - System Defaults

Applet Viewer Java Classpath options:

Applet Viewer Java Classpath: Java Foundation Classes
 Java Communication extensions

User classpath:

Verbose mode (receive a message when Java loads class)

Verify classes:

Garbage collection:

Verbose
 Only When Needed

Memory settings:

Maximum heap size: (128 KB or greater)

Java stack size: (10 KB or greater)

Native code stack size: (32 KB or greater)

Properties (optional):

100% What's Related



Default Setting for Java

- **Heapsize (-mx)** - 6M
 - **Java Stack Size (-oss)** - 400K
 - **C Stack Size (-ss)** - 128K
 - **Class Verify** - network only
-
- **Can determine actual values by examining output when -verbosegc is selected**



Accessing the Standard Extensions

JFC, javax.comm,...

- **Defined extensions can be placed on the CLASSPATH**
- **however, with NSM button selection**
 - faster execution that access through classloader
 - no class validation, Security Manager - i.e.. not as 'safe'
- **Applets can select the extensions to be loaded through a classloader by using the <ARCHIVE> attribute associated with the <APPLET> tag**



Java Plugin

How do I get Netscape to use the IBM JVM?

- **Select the IBM JVM with the Plugin 'Switch' in NSM**
 - ▶ may not be working, will be addressed in followon PTF
- **Customer must create HTML files with <EMBED> tags**
- **May not be an appropriate solution for customers with specific requirements on:**
 - ▶ **Netscape security model - certificate management, Netscape Classloader**
 - ▶ **secure http**
 - ▶ **automatic proxy configuration**
 - ▶ **LiveConnect**
 - ▶ **Socks support**
- **Significantly faster than the Netscape JVM**
 - ▶ **200% faster on Series 1000**
- **HTML pages can be converted with Plugin Cmd LineConverter**
 - ▶ **Java JAConverter [filespecs] [-options1 value1 [-option2 value2 [...]]]**
 - ▶ **see http://www.javasoft.com/products/plugin/1.1.2/converter_readme.txt**
 - ▶ **Add /usr/lib/java/J118/lib/Converter.jar to the CLASSPATH**



Manual Use of the Java Plugin

Original Applet Tag

```
<APPLET code="XYZApp.class" align="baseline"  
        width="200" height="200">  
  <PARAM NAME="model"  
VALUE="models/HyaluronicAcid.xyz">  
  
</APPLET>
```

New EMBED tag:

```
<EMBED type="application/x-java-applet;version=1.1" width="200"  
        height="200" align="baseline" code="XYZApp.class"  
        model="models/HyaluronicAcid.xyz"  
  
</EMBED>
```

pluginspage attribute not applicable since not downloadable



Debugging the Java environment

- **must run Java from Advanced Diagnostic window**
 - **verbose messages available here from:**
 - ◆ -verbose option - shows classes loaded and detailed exceptions
 - ◆ -verbosegc option - shows current heap contents and GC activity
- **utilize Memory monitors and tools from development**
 - **Rough memory monitor on top left**
 - **applications are killed in priority order as memory emptied**
- **utilize Debug set of JDK tools (java_g, etc.) from development**
- **Compare execution to a Solaris/Unix system**
 - **it may be a Microsoft Windows specific 'feature'**
- **Turn off the desktoplauncher**
 - **set \$DTL_ACTIVE to false**



References

where to find more info

- [under http://www.javasoft.com](http://www.javasoft.com)
 - ▶ </products/plugin/1.1.2/index-1.1.2.html>
 - Plugin & Converter Information
 - ▶ </products/Java-media/JMF/>
 - Java Media Frameworks (JMF) APIs
 - ▶ </products/javacomm/>
 - javaxcomm (Serial Port Access)
- <http://w3.hursley.ibm.com/java>
 - ▶ Internal JTC development information
- <http://www.alphaworks.ibm.com>
 - IBM developed tools for a little of everything