

lenovo

*Lenovo USB WebCam
Quick Start Guide*

First Edition (January 2007)

© Copyright Lenovo 2007. All rights reserved.

U.S. GOVERNMENT USERS – RESTRICTED RIGHTS: Our products and/or services are provided with RESTRICTED RIGHTS. Use, duplication or disclosure by the Government is subject to the GSA ADP Schedule contract with Lenovo Group Limited, if any, or the standard terms of this commercial license, or if the agency is unable to accept this Program under these terms, then we provide this Program under the provisions set forth in Commercial Computer Software–Restricted Rights at FAR 52.227-19, when applicable, or under Rights in Data-General, FAR 52.227.14 (Alternate III).

Contents

Important information about the product CD	v
About the Lenovo USB WebCam	1-1
Product description	1-1
Required hardware and software	1-1
Installation	1-2
Device driver installation	1-2
Software installation	1-3
Hardware installation	1-3
Appendix A. Service and Support	A-1
Registering your option	A-1
Online technical support	A-1
Telephone technical support	A-1
Appendix B. Lenovo Limited Warranty - Customer Notice	B-1
Guarantee supplement for Mexico	B-15
Appendix C. Notices	C-1
Recycling information	C-3
Trademarks	C-3
Appendix D. Electronic emission notices	D-1
Federal Communications Commission (FCC) Declaration of Conformity	D-1

Important information about the product CD

The User's Guide is available in multiple languages on the product CD. Insert the CD into the CD or DVD drive and select a language.

Le guide d'utilisation est disponible en plusieurs langues sur le CD du produit. Insérez le CD dans l'unité de CD ou de DVD, puis sélectionnez une langue.

Das Benutzerhandbuch ist in mehreren Sprachen auf der Produkt-CD verfügbar. Legen Sie die CD in das CD- oder DVD-Laufwerk ein, und wählen Sie eine Sprache aus.

La Guida per l'utente è disponibile in più lingue sul CD del prodotto. Inserire il CD nell'unità CD o DVD e selezionare la lingua.

En el CD del producto, encontrará la guía del usuario en distintos idiomas. Inserte el CD en la unidad de CD o DVD y seleccione un idioma.

O Guia do Usuário está disponível em vários idiomas no CD do produto. Insira o CD na unidade de CD ou DVD e selecione um idioma.

Uživatelská příručka je na produktovém CD dostupná ve více jazycích. Vložte CD do jednotky CD nebo DVD a vyberte svůj jazyk.

Uživatelská príručka je dostupná vo viacerých jazykoch na produktovom CD. Vložte CD do jednotky CD alebo DVD a vyberte jazyk.

Ürün CD'sinde bu Kullanıcı Kılavuzu'nun birçok dile çevrilmiş sürümü bulunur. CD'yi CD ya da DVD sürücüye takın ve bir dil seçin.

产品 CD 上提供了多个语言版本的《用户指南》。
请将该 CD 插入 CD 或 DVD 驱动器中并选择一种语言。

產品 CD 提供多國語言的使用手冊。
請將 CD 插入 CD 或 DVD 光碟機，並選取您要使用的語言。

同梱の CD には、各国語のユーザーズ・ガイドが収録されています。
CD を、CD ドライブまたは DVD ドライブに挿入して、言語を選択してください。

دليل المستخدمين متاح بعدة لغات على القرص المدمج للبرنامج. برجاء ادراج القرص المدمج
في وحدة تشغيل CD/DVD وحدد اللغة الخاصة بك.

Ръководството за потребителя е достъпно на множество езици на продуктовия CD.
Поставете този CD в CD или DVD устройството, и изберете език.

Vodič za korisnike je dostupan na više jezika na CD-u s proizvodom.
Umetnite CD u CD ili DVD pogon i izaberite jezik.

Brugervejledningen findes på flere sprog på produkt-CD'en. Læg CD'en
i CD- eller DVD-drevet, og vælg sprog.

Kasutusjuhend on toote CD-l saadaval mitmes keeles.
Sisestage CD oma arvuti CD- või DVD-seadmesse ja valige soovitud keel.

Tuotteen CD-tietolevyssä on usealle eri kielelle käännetty käyttöopas.
Aseta levy CD- tai DVD-asemaan ja valitse haluamasi kieli.

Ο Οδηγός Χρήστη (User's Guide) παρέχεται σε διάφορες γλώσσες στο CD του προϊόντος. Τοποθετήστε το CD στη μονάδα CD ή DVD του υπολογιστή και επιλέξτε τη γλώσσα της προτίμησής σας.

המדריך למשתמש זמין במספר שפות בתקליטור המוצר.
הכניסו את התקליטור לכונן התקליטורים או ה-DVD, ובחרו שפה.

A Felhasználói kézikönyv többnyelvű változata megtalálható a CD lemezen. Helyezze be a CD lemezt a CD vagy a DVD meghajtóba, és válassza ki a nyelvet.

제품 CD에 각 언어별 사용 설명서가 있습니다.
CD 또는 DVD 드라이브에 CD를 넣고 언어를 선택하십시오.

Produkto kompaktiniame diske rasite vartotojo vadovą įvairiomis kalbomis. Įdėkite kompaktinį diską į kompaktinį ar DVD diskų įrenginį ir pasirinkite savo kalbą.

Produkta lietotāja rokasgrāmata ir pieejama vairākās valodās kompaktdiskā. Ievietojiet to kompaktdiska vai DVD diskdzinī un izvēlieties valodu.

Het Handboek voor de gebruiker is in verschillende talen beschikbaar op de product-CD. Plaats de CD in het CD- of DVD-station en kies een taal.

Brugerhåndboken finnes på flere språk på produkt-CDen. Sett CDen inn i CD- eller DVD-stasjonen og velg et språk.

Podręcznik użytkownika jest dostępny na dysku CD-ROM produktu w wielu wersjach językowych. Włóż dysk CD-ROM do napędu CD lub DVD i wybierz język.

O Manual do Utilizador está disponível em vários idiomas no CD do produto. Introduza o CD na unidade de CD ou DVD e seleccione um idioma.

На компакт-диске продукта есть переводы Руководства пользователя на несколько языков. Вставьте компакт-диск в CD- или DVD-дисковод и выберите язык.

Navodila za uporabo so na voljo v več jezikih na priloženem CD-ju. Vstavite CD v CD ali DVD pogon in izberite jezik.

Användarhandboken finns på flera språk på produkt-CDn. Sätt in CDn i CD- eller DVD-enheten och välj språk.

About the Lenovo USB WebCam

This guide provides information about product features and installation instructions.

Product description

The Lenovo USB WebCam makes it easy to video conference with colleagues, friends, and family. Its portable, innovative ThinkVantage® design provides excellent video and sound quality to ensure you are heard and seen. It is the perfect tool to enhance your PC video conferencing experience.

Additional features include:

- Sliding lens cover
- Two beam-forming microphones with noise reduction that separates your voice from ambient background noises
- Webcam software that removes unwanted echoes so your voice comes through naturally on the receiving end
- 1.3 megapixel sensor combined with a high-speed USB 2.0 connectivity, which allows you to capture maximum frames per second for quality pictures and video
- Face tracking, which keeps your face tracked and in the center of the video frame so you are free to move about freely without needing to adjust your webcam's position or angle
- Ball joint pivot with manual 360 degree rotation and pan and tilt
- Spring clip attachment that easily and securely attaches to a flat-panel, LCD, or computer monitor
- Full-feature software suite that includes video editing, e-mail, and photo capture

Required hardware and software

Minimum software and system requirements:

- Microsoft® Windows® 2000 Professional (SP4+), Windows XP (SP2+), or Windows Vista™
- Intel or AMD 800Mhz
- 256 MB RAM or minimum OS requirement, whichever is higher
- 200 MB free hard drive space
- CD-ROM drive
- 16-bit color display adapter
- Windows-compatible sound card and speakers

Installation

This section contains instructions for installing the device drivers and the Lenovo USB WebCam software for Windows 2000 Professional, Windows XP, or Windows Vista.

Notes:

1. For the latest version of the Lenovo USB WebCam device driver/webcam software, visit the Lenovo Web site at <http://www.lenovo.com/support>.
2. Install the device driver/webcam software that accompanies your Lenovo USB WebCam before installing your hardware.

Device driver installation

To install the Lenovo USB WebCam device drivers for Windows 2000 Professional, Windows XP, or Windows Vista, complete these steps:

1. Save any open documents and exit all applications.
2. Insert the CD for the Lenovo USB WebCam that comes with your option product. After inserting the CD, the User's Guide Software window opens.
3. On the left side of the window, click **Driver/Software**.
4. Click **Install Device Drivers**. The Lenovo USB WebCam Driver Installation window opens.

5. Read all content in the installation window carefully.
6. Follow the steps in each dialog window and click **Next** to continue.
7. Click **Finish**.
8. Restart your computer to complete the device driver installation.

Note: When the device driver installation is complete, the Lenovo USB WebCam system tray icon displays on the Windows taskbar.

Software installation

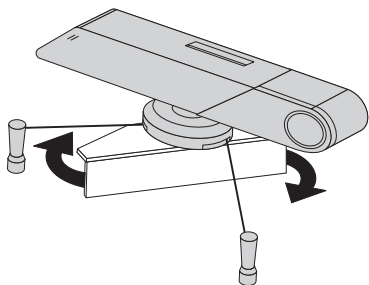
To install the Lenovo USB WebCam software for Windows 2000 Professional, Windows XP, or Windows Vista, complete these steps:

1. Save any open documents and exit all applications.
2. Insert the CD for the Lenovo USB WebCam that comes with your option product. After inserting the CD, the User's Guide Software window opens.
3. On the left side of the window, click **Driver/Software**.
4. Click **Install WebCam Software**. The Lenovo USB WebCam Software Installation window opens.
5. Read all content in the installation window carefully.
6. Follow the steps in each dialog window and click **Next** to continue.
7. Click **Finish** to complete the software installation.

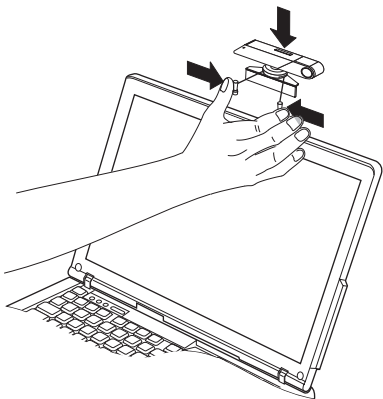
Hardware installation

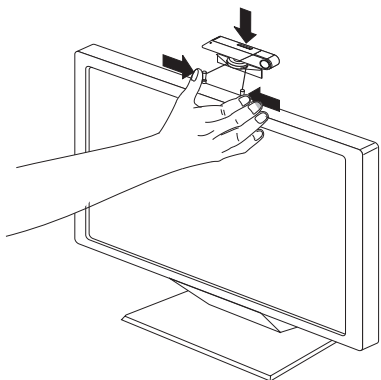
To correctly mount your webcam, complete these steps:

1. The non-skid platform on the Lenovo USB WebCam can be rotated to accommodate LCD, flat-panel, or computer monitors of various sizes. Move the platform to a position that best fits your monitor.

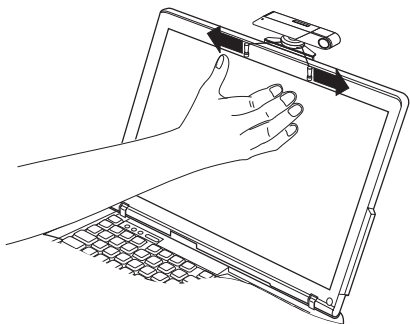


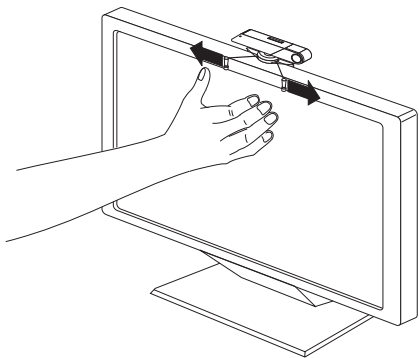
2. Carefully squeeze the mounting brackets together.



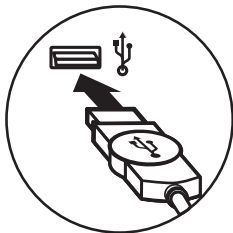


3. Rest the webcam on the upper ledge of your monitor and slowly allow the mounting brackets to return to their normal position until it is secured to the monitor.

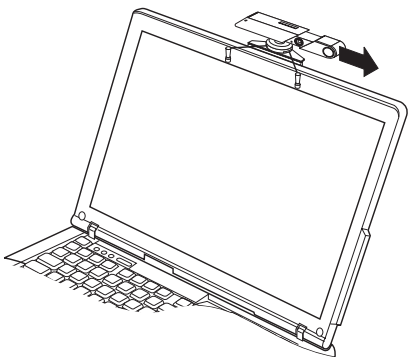




4. Plug the webcam into a USB port on your computer.



5. Slide the lens cap open. Your webcam is ready for use.



For more information on using your Lenovo USB WebCam, refer to the User's Guide included with your option product CD.

Appendix A. Service and Support

The following information describes the technical support that is available for your product, during the warranty period or throughout the life of your product. Refer to the Lenovo Limited Warranty for a full explanation of Lenovo warranty terms.

Registering your option

Register to receive product service and support updates, as well as free and discounted computer accessories and content.

Go to <http://www.lenovo.com/register>

Online technical support

Online technical support is available during the lifetime of a product at <http://www.lenovo.com/support>.

Product replacement assistance or exchange of defective components also is available during the warranty period. In addition, if your option is installed in a Lenovo computer, you might be entitled to service at your location. A Lenovo technical support representative can help you determine the best alternative.

Telephone technical support

Installation and configuration support through the Customer Support Center will be available until 90 days after the option has been withdrawn from marketing. After that time, the support is cancelled, or made available for a fee, at Lenovo's discretion. Additional support is also available for a nominal fee.

Before contacting a Lenovo technical support representative, please have the following information as possible: option name and number, proof of purchase, computer manufacturer, model, serial number and manual, the exact wording of any error message, description of the problem, and the hardware and software configuration information for your system.

Your technical support representative might want to walk you through the problem while you are at your computer during the call.

For a list of Service and Support phone numbers, visit <http://www.lenovo.com/support/phone>.

Appendix B. Lenovo Limited Warranty - Customer Notice

Lenovo Limited Warranty - Customer Notice

Please read the Lenovo Limited Warranty (LLW) on the CD provided with this shipment. The LLW is available in 30 languages and can be viewed from the product CD or by visiting <http://www.lenovo.com/warranty>. If you cannot view the LLW, contact your local Lenovo office or reseller to obtain a printed version of the LLW.

Warranty Information applicable to your Machine:

1. Warranty Period: 1 year
2. Type of Warranty Service: Customer Replaceable Unit ("CRU") and Customer Carry-In or Mail-In Service
3. Lenovo Limited Warranty Version: L505-0010-00 09/2006

For warranty service consult the telephone list at www.lenovo.com/support/phone. Phone numbers are subject to change without notice.

Garantie Lenovo - Notification client

Veillez lire la Garantie Lenovo qui se trouve sur le CD fourni avec le produit. Cette garantie est disponible dans 30 langues et figure sur le CD du produit ou en ligne, à l'adresse <http://www.lenovo.com/warranty>. Si vous n'arrivez pas à l'afficher, prenez contact avec votre distributeur Lenovo ou avec le bureau Lenovo local afin d'en obtenir une version imprimée.

Informations relatives à la garantie applicable à votre machine:

1. Période de garantie : 1 an
2. Services prévus par la garantie : Unité remplaçable par l'utilisateur ("CRU") et Service de livraison ou d'expédition par le client
3. Version de la garantie : L505-0010-00 09/2006

Pour obtenir les services prévus par la garantie, consultez la liste de numéros de téléphone à l'adresse www.lenovo.com/support/phone. Les numéros de téléphone sont susceptibles d'être modifiés sans préavis.

Lenovo Limited Warranty - Avviso per il cliente

Si prega di leggere la dichiarazione di garanzia limitata (LLW) sul CD fornito con questa spedizione. La dichiarazione di garanzia limitata (LLW) è disponibile in 30 lingue e può essere visualizzata nel CD del prodotto oppure visitando il sito <http://www.lenovo.com/warranty>. Se non è possibile visualizzare la dichiarazione di garanzia limitata (LLW), contattare l'ufficio locale Lenovo o il rivenditore per ottenerne una versione stampata.

Informazioni sulla garanzia applicabili alla macchina:

1. Periodo di garanzia: 1 anno
2. Tipo di servizio di garanzia: Customer Replaceable Unit ("CRU") e Customer Carry-In o servizio Mail-In
3. Versione di dichiarazione di garanzia limitata: L505-0010-00 09/2006

Per il servizio di garanzia, consultare l'elenco telefonico all'indirizzo www.lenovo.com/support/phone. I numeri telefonici sono soggetti a modifiche senza preavviso.

Lenovo Erklärung über begrenzte Gewährleistung - Hinweis für Kunden

Lesen Sie die Lenovo Erklärung über begrenzte Gewährleistung auf der CD, die in dieser Lieferung enthalten ist. Die Erklärung steht in 30 Sprachen zur Verfügung und kann über die Produkt-CD oder online unter <http://www.lenovo.com/warranty> angezeigt werden. Wenn Sie die Erklärung nicht anzeigen können, wenden Sie sich an Ihre Lenovo Niederlassung oder Ihren Lenovo Reseller vor Ort, um eine gedruckte Version der Erklärung zu erhalten.

Für Ihre Maschine gelten folgende Gewährleistungsinformationen:

1. Gewährleistungszeitraum: 1 Jahr
2. Art des Gewährleistungsservice: "CRU"-Service (Customer Replaceable Unit, durch den Kunden austauschbare Funktionseinheit) und Anlieferung durch den Kunden oder per Versand
3. Lenovo Erklärung über begrenzte Gewährleistung: L505-0010-00 09/2006

Um Gewährleistungsservice in Anspruch zu nehmen, rufen Sie die entsprechende Telefonnummer aus der Liste unter der folgenden Adresse an: www.lenovo.com/support/phone. Telefonnummern können jederzeit ohne Vorankündigung geändert werden.

Garantía Limitada de Lenovo - Aviso para el cliente

Por favor, lea la Garantía Limitada de Lenovo que encontrará en el CD que se proporciona con este envío. La Garantía Limitada de Lenovo está disponible en 30 idiomas y se puede consultar en el CD del producto o visitando la página web <http://www.lenovo.com/warranty>. Si no puede visualizar la Garantía Limitada de Lenovo, póngase en contacto con su distribuidor u oficina local de Lenovo para obtener una versión impresa de la misma.

Información acerca de la garantía aplicable a su Máquina:

1. Periodo de garantía: 1 año
2. Tipo de servicio de garantía: Unidad reemplazable por el cliente ("CRU") y servicio de transporte por parte del usuario o correo
3. Versión de la Garantía Limitada de Lenovo: L505-0010-00 09/2006

Si desea información sobre el servicio de garantía, consulte la lista de teléfonos en www.lenovo.com/support/phone. Los números de teléfono están sujetos a cambio sin previo aviso.

Garantia Limitada da Lenovo - Aviso ao Cliente

Leia a LLW (Garantia Limitada da Lenovo) no CD fornecido com este pacote. A LLW está disponível em 30 idiomas e pode ser visualizada a

partir do CD do produto ou visitando <http://www.lenovo.com/warranty>. Se você não conseguir visualizar a LLW, entre em contato com seu revendedor ou com um escritório da Lenovo para obter uma versão impressa da LLW.

Informações de Garantia aplicáveis à sua máquina:

1. Período de Garantia: 1 ano
2. Tipo de Serviço de Garantia: Serviço CRU (Unidade Substituível pelo Cliente) e Serviço de Entrega e Correio
3. Versão da Garantia Limitada da Lenovo: L505-0010-00 09/2006

Para obter o serviço de garantia, consulte a lista telefônica em www.lenovo.com/support/phone. Os números de telefone estão sujeitos a alteração sem aviso prévio.

Omezená záruka Lenovo - upozornění pro zákazníky

Přečtěte si prosím Omezenou záruku Lenovo (Lenovo Limited Warranty, LLW) na disku CD, který je součástí dodávky. Text Omezená záruka (LLW) je k dispozici v 30 jazycích a můžete si jej prohlédnout na disku CD nebo na webové stránce <http://www.lenovo.com/warranty>. Pokud si text LLW nemůžete prohlédnout, vyžádejte si vytištěnou verzi od místního zastoupení Lenovo nebo od prodejce.

Informace o záruce platné pro tento stroj:

1. Záruční doba: 1 rok.
2. Typ záručního servisu: 'CRU' (Customer Replaceable Unit, díly vyměnitelné zákazníkem) a servis typu Customer Carry-In nebo Mail-In.
3. Omezená záruka Lenovo verze: 505-0010-00 09/2006.

Informace o záručním servisu získáte na telefonních číslech uvedených na webové stránce www.lenovo.com/support/phone. Telefonní čísla se mohou měnit bez předchozího upozornění.

Vyhľadanie pre zákazníkov o obmedzenej záruke Lenovo

Prečítajte si vyhlásenie o obmedzenej záruke Lenovo (LLW) na CD, ktoré je súčasťou dodávky produktu.

LLW je k dispozícii v 30 jazykoch a môžete si ho pozrieť z produktového CD alebo na webovej stránke <http://www.lenovo.com/warranty>. Ak si nemôžete zobrazit LLW, kontaktujte pobočku spoločnosti Lenovo alebo jej predajcu a požiadajte o tlačenú verziu LLW.

Záručné informácie platné pre váš počítač:

1. Záručná lehota: 1 rok
2. Typ záručného servisu: Servis CRU (zákazníkom vymeniteľné dielce) a služba doručenia alebo poslania zákazníkom
3. Verzia vyhlásenia Lenovo o obmedzenej záruke: 505-0010-00 09/2006

Záručný servis je k dispozícii na telefónnych číslach uvedených v zozname na webovej stránke www.lenovo.com/support/phone. Telefónne čísla môžu byť zmenené bez predchádzajúceho upozornenia.

Lenovo Uluslararası Garanti-Müşteri Bildirimi

Lütfen bu ürünle birlikte gönderilen CD'deki Lenovo Uluslararası Garanti (LLW) belgesini okuyun. LLW belgesi 30 dile çevrilmiştir ve ürün CD'sinden ya da <http://www.lenovo.com/warranty> adresinden görüntülenebilir. LLW belgesini görüntüleyemezseniz, yerel Lenovo ofisine ya da yetkili satıcısına başvurarak LLW belgesinin yazılı bir kopyasını edinin.

Makineniz için geçerli olan garanti bilgileri:

1. Garanti Süresi: 2 yıl
2. Garanti Hizmetinin Tipi: Müşteri Tarafından Teslim ya da Postayla Teslim Hizmeti
3. Lenovo Uluslararası Garanti Sürümü: 505-0010-00 09/2006

Garanti hizmeti için www.lenovo.com/support/phone adresindeki telefon listesine bakın. Telefon numaraları bildirilmeden değiştirilebilir.

Lenovo 客户有限保证声明

请阅读有限保证声明（LLW），该声明在产品随附的 CD 上。LLW 具有 30 种语言版本，您既可以通过从产品 CD 中查看，也可通过访问 <http://www.lenovo.com/warranty> 进行查看。如果不能查看 LLW，请联系您本地的 Lenovo 营业处或经销商来获得印刷版本的 LLW。

适用于您机器的保修信息：

1. 保修期：1 年
2. 保修服务类型：客户可更换部件（CRU）和客户送修或邮寄服务
3. 有限保证声明版本：505-0010-00 09/2006

有关保修服务的信息，请查询电话列表，地址为：www.lenovo.com/support/phone。
电话号码如有更改，恕不另行通知。

Lenovo 有限保證 - 客戶注意事項

請閱讀產品隨附 CD 中的 Lenovo 有限保證 (LLW)。LLW 共有 30 個語言版本，您可從產品光碟或造訪 <http://www.lenovo.com/warranty> 便可取得。如果您無法檢閱 LLW，請聯絡當地的 Lenovo 辦公室或轉銷商以取得印刷版的 LLW。

您機器的保固資訊如下：

1. 保固期限：1 年
2. 保固服務類型：客戶可自行更換組件 ("CRU") 及客戶親自或郵寄送修服務
3. Lenovo 有限保證版本：505-0010-00 09/2006

您可以從 www.lenovo.com/support/phone 網站取得保固維修電話清單。電話號碼若有變更恕不另行通知。

保証の内容と制限 - お客様へのお知らせ

本製品に付属の CD に収められている「Lenovo 保証の内容と制限」をお読みください。「Lenovo 保証の内容と制限」は 30 か国語で提供され、プロダクト CD または Web サイト (<http://www.lenovo.com/warranty>) でご覧になれます。「Lenovo 保証の内容と制限」をご覧にならない場合、お近くの Lenovo 事業所または販売店にお問い合わせいただければ、印刷された「Lenovo 保証の内容と制限」を入手いただけます。

ご使用のマシンの保証情報は次のとおりです：

1. 保証期間：1 年
2. 保証サービスの種類：お客様での取替え可能部品 (CRU: Customer Replaceable Unit) および持ち込みまたは郵送サービス
3. 「Lenovo 保証の内容と制限」のバージョン：505-0010-00 09/2006

保証サービスについては、www.lenovo.com/support/phone のリストにある電話番号にお問い合わせください。電話番号は、予告なしに変更される場合があります。

بيان Lenovo للضمانات المحدودة - اخطار العميل
برجاء قراءة بيان Lenovo للضمانات المحدودة (LLW) Lenovo Limited Warranty بالقرص المدمج المقدم مع مجموعة المنتجات هذه. بيان Lenovo للضمانات المحدودة LLW متاح في ثلاثين لغة ويمكن مشاهدته من خلال القرص المدمج للمنتج أو على الانترنت بالموقع <http://www.lenovo.com/warranty>. إذا لم يمكنك مشاهدة بيان Lenovo للضمانات المحدودة LLW، اتصل بالوكيل المعتمد لشركة Lenovo للحصول على النسخة المطبوعة من بيان Lenovo للضمانات المحدودة.

معلومات الضمان التي سيتم تطبيقها على الآلة الخاصة بك:

1. فترة الضمان : سنة
2. نوع خدمة الضمان : الوحدة التي يمكن استبدالها بواسطة العميل ("CRU") وخدمة العميل في حالة قيام العميل بحمل الآلة لمكان أداء الخدمة أو إرسالها بواسطة البريد.

3. نسخة بيان Lenovo للضمانات المحدودة: L505-0010-00 09/2006

بالنسبة لخدمة الضمان، ارجع الى كشف التليفونات بالموقع www.lenovo.com/support/phone. أرقام التليفونات عرضة للتغيير بدون أي اخطار.

Lenovo Ограничена гаранция - Забележка за клиента

Моля, прочетете Lenovo Ограничената гаранция (LLW) на компакт-диска, предоставен с тази доставка.

LLW е достъпна на 30 езика, и може да бъде прегледана от продуктивния компакт-диск или чрез посещаване на <http://www.lenovo.com/warranty>. Ако не можете да прегледате LLW, свържете се с местния офис или представител на Lenovo, за да получите отпечатаната версия на LLW.

Гаранционна информация, приложима за вашата Машина:

1. Гаранционен период: 1 година
2. Тип на гаранционно обслужване: Подменяеми от клиента части ("CRU") и Обслужване с доставка от клиента или по пощата
3. Lenovo ограничена гаранция Версия: 505-0010-00 09/2006

За гаранционно обслужване направете справка в списъка с телефони на www.lenovo.com/support/phone. Телефонните номера подлежат на промяна без предизвестие.

Lenovo ograničeno jamstvo - Napomena za korisnika

Molimo pročitajte Lenovo ograničeno jamstvo (LLW) na CD-u koji ste dobili s ovom pošiljkom. LLW je dostupno na 30 jezika i može se vidjeti na CD-u s proizvodom ili na <http://www.lenovo.com/warranty>. Ako ne možete vidjeti LLW, kontaktirajte lokalni Lenovo ured ili prodavača i zatražite tiskanu verziju LLW-a.

Informacije o jamstvu koje se odnose na vaš Stroj:

1. Period jamstva: 1 godina
2. Tip jamstvenog servisa: Korisnički zamjenjive jedinice ('CRU') i servis s korisničkom ili poštanskom dostavom
3. Verzija Lenovo ograničenog jamstva: 505-0010-00 09/2006

Radi jamstvenog servisa pogledajte popis telefona na www.lenovo.com/support/phone. Telefonski brojevi se mogu promijeniti bez prethodne obavijesti.

Bemærkning til kunden vedrørende Lenovo Begrænset garanti

Læs Lenovo Begrænset garanti (LLW) på den medfølgende CD. Lenovo Begrænset garanti er oversat til 30 sprog og findes på produkt-CD'en. Du kan også læse den ved at gå ind på <http://www.lenovo.com/warranty>. Kontakt Lenovo eller forhandleren for at få en trykt udgave, hvis du ikke kan få vist Lenovo Begrænset garanti.

Garantioplysninger for maskinen:

1. Garantiperiode: 1 år
2. Servicetype i garantiperioden: CRU-service (Customer Replaceable Unit) og carry-in-service eller indsendelsesservice
3. Version af Lenovo Begrænset garanti: L505-0010-00 09/2006

Se telefonlisten på adressen www.lenovo.com/support/phone vedrørende garantiservice. Telefonnumre kan ændres uden forudgående varsel.

Lenovo rajoitettu takuu - ilmoitus asiakkaille

Lue Lenovon rajoitetun takuun ehdot (LLW) lähetyksen mukana toimitetusta CD-levystä. LLW-asiakirja on saatavana 30 eri kielellä ja sitä voi tarkastella tuotteen CD-tietolevyn avulla tai siirtymällä WWW-osoitteeseen <http://www.lenovo.com/warranty>. Jos

LLW-asiakirjan tarkastelu ei onnistu, ota yhteys Lenovon paikalliseen toimistoon tai jälleenmyyjään saadaksesi tulostetun LLW-asiakirjan.

Konetta koskevat takuutiedot:

1. Takuu-aika: 1 vuosi
2. Takuupalvelun laji: Asiakkaan vaihdettavissa olevia osia (CRU) koskeva palvelu ja asiakkaan toteuttama kuljetus tai postikuljetus
3. Rajoitetun takuun ehtojen versio: L505-0010-00 09/2006

Saat takuupalveluja soittamalla sopivaan Web-sivustossa www.lenovo.com/support/phone olevan luettelon puhelinnumeroon. Puhelinnumerot voivat muuttua ilman ennakoilmoitusta.

Περιορισμένη Εγγύηση της Lenovo - Ειδοποίηση προς τους Πελάτες

Παρακαλούμε, διαβάστε την Περιορισμένη Εγγύηση της Lenovo (Lenovo Limited Warranty - LLW) που περιλαμβάνεται στο CD που παρέχεται με αυτό το πακέτο. Η Περιορισμένη Εγγύηση της Lenovo είναι διαθέσιμη σε 30 γλώσσες και μπορεί να εξεταστεί από το CD του προϊόντος ή από την ιστοσελίδα <http://www.lenovo.com/warranty>. Εάν δεν είστε σε θέση να εξετάσετε την Περιορισμένη Εγγύηση της Lenovo με έναν από τους παραπάνω τρόπους, τότε επικοινωνήστε με τα τοπικά γραφεία της Lenovo ή με κάποιον μεταπωλητή προϊόντων Lenovo για να αποκτήσετε ένα έντυπο αντίγραφο της Περιορισμένης Εγγύησης της Lenovo.

Πληροφορίες σχετικά με την Εγγύηση που ισχύει για τη Μηχανή σας:

1. Περίοδος Εγγύησης: 1 έτος
2. Είδος Υπηρεσιών Εγγύησης: Υπηρεσία Μονάδων Αντικαθιστώμενων από τον Πελάτη ('CRU') και Υπηρεσίες με Μεταφορά ή Αποστολή από τον Πελάτη
3. Εκδοχή της Περιορισμένης Εγγύησης της Lenovo: L505-0010-00 09/2006

Για τη λήψη υπηρεσιών εγγύησης, συμβουλευτείτε τη λίστα τηλεφώνων στη διεύθυνση www.lenovo.com/support/phone. Οι αριθμοί τηλεφώνου υπόκεινται σε αλλαγή χωρίς ειδοποίηση.

אחריות מוגבלת של Lenovo - הודעה ללקוחות

אנא קראו את האחריות המוגבלת של Lenovo (LLW), הנמצאת בתקליטור המצורף למשלוח. האחריות המוגבלת זמינה ב-30 שפות, והיא זמינה בתקליטור המוצר, או בכתובת <http://www.lenovo.com/warranty>. אם אינכם מצליחים לראות את האחריות המוגבלת, פנו לנציגות Lenovo המקומית או לספק, כדי לקבל גרסה מודפסת של האחריות המוגבלת.

מידע אחריות עבור המכונה שלכם:

1. תקופת האחריות: שנה אחת
2. סוג שירות אחריות: יחידות להחלפה עצמית ("CRU") ושירות במסירה או במשלוח דואר על-ידי הלקוח
3. גרסת אחריות מוגבלת של Lenovo: L505-0010-00 09/2006

מספרי הטלפון למידע אודות שירות האחריות זמינים בכתובת www.lenovo.com/warranty/phone. מספרי הטלפון עשויים להשתנות ללא הודעה מראש.

Lenovo כוללת זיכרון - Vásárlói közlemény

Кérjük olvassa el a termékhez tartozó CD-n található Lenovo korlátozott jótállási nyilatkozatot (LLW). Az LLW 30 nyelven áll rendelkezésre, amely a termék CD mellett elérhető a <http://www.lenovo.com/warranty> címről is. Ha nem tudja megtekinteni, akkor a helyi Lenovo irodától vagy viszonteladótól kérheti az LLW nyomtatott példányát.

A gépre vonatkozó jótállási feltételek:

1. Jótállási időtartam: 1 év
2. Garanciális szerviz típusa: Felhasználó által cserélhető egység ("CRU") és beszállításos vagy postázásos szerviz
3. Lenovo korlátozott jótállási nyilatkozat száma: L505-0010-00 09/2006

A garanciális szolgálatok telefonszámait a www.lenovo.com/support/phone alatt találja meg. A telefonszámok bejelentés nélkül megváltozhatnak.

Lenovo 보증 제한 - 고객 주의사항

제품과 함께 제공되는 CD의 Lenovo 보증 제한(LLW)을 읽어 보십시오. LLW는 30개 언어로 지원되며 제품 CD 또는 웹 사이트 <http://www.lenovo.com/warranty>에서 볼 수 있습니다. LLW를 볼 수 없는 경우 해당 지역 Lenovo 사무실 또는 판매자에게 문의하여 LLW의 인쇄물을 문의하십시오.

사용자 시스템에 적용되는 보증 정보:

1. 보증 기간: 1년
2. 보증 서비스 종류: 고객 교체 가능 유닛(CRU) 및 고객 직접 운송 또는 우편 서비스
3. Lenovo 보증 제한 버전: L505-0010-00 09/2006

보증 서비스 문의는 웹 사이트 www.lenovo.com/support/phone에서 전화번호 목록을 참고하십시오. 전화번호는 사전 통고없이 변경될 수 있습니다.

Lenovo Beperkte Garantie - Kennisgeving aan klant

Lees de Lenovo Beperkte Garantie (Lenovo Limited Warranty, LLW) op de CD die bij dit pakket is geleverd. De Lenovo Beperkte Garantie is beschikbaar in 30 talen. U vindt deze op de product-CD of op <http://www.lenovo.com/warranty>. Als u de LLW niet kunt vinden, neemt u contact op met uw Lenovo-wederverkoper voor een gedrukte versie van de LLW.

Garantie-informatie die van toepassing is op uw machine:

1. Garantieperiode: 1 jaar
2. Type Garantieservice: Customer Replaceable Unit ("CRU") en Customer Carry-In of Mail-In Service
3. Versie van Lenovo Beperkte Garantie: L505-0010-00 09/2006

Voor garantieservice raadpleegt u de telefoonlijst op www.lenovo.com/support/phone. Telefoonnummers kunnen zonder aankondiging worden gewijzigd.

Lenovos garantibetingelser - Merknad til kunden

Les Lenovos garantibetingelser (LLW) på CDen som fulgte med i denne pakken. Garantibetingelsene er tilgjengelige på 30 språk og ligger på produkt-CDen og på nettsiden <http://www.lenovo.com/warranty>. Hvis du ikke får frem garantibetingelsene, kan du kontakte ditt lokale Lenovo-kontor eller forhandleren og få en trykt utgave av betingelsene.

Garantibetingelser som gjelder for din maskin:

1. Garantiperiode: 1 år
2. Type garantiservice: Customer Replaceable Unit ("CRU") og service med innlevering eller innsending
3. Versjon av Lenovos garantibetingelser: L505-0010-00 09/2006

For garantiservice, se telefonlisten på www.lenovo.com/support/phone. Telefonnumrene kan bli endret uten forvarsel.

Ograniczona gwarancja Lenovo - informacja dla klienta

Prosimy o przeczytanie ograniczonej gwarancji Lenovo (Lenovo Limited Warranty - LLW), znajdującej się na dołączonym dysku CD-ROM. LLW dostępna jest w 30 językach i można ją znaleźć na dysku CD-ROM produktu lub pod adresem <http://www.lenovo.com/warranty>. Jeśli nie można wyświetlić LLW, należy skontaktować się z miejscowym biurem Lenovo lub z reselerem, w celu uzyskania wersji drukowanej.

Informacje gwarancyjne mające zastosowanie do Maszyny Klienta:

1. Okres gwarancyjny: 1 rok
2. Typ serwisu gwarancyjnego: serwis polegający na dostarczeniu Części Wymienianych przez Klienta (Customer Replaceable Unit - CRU) lub serwis z wysyłką lub transportem przez Klienta.
3. Wersja ograniczonej gwarancji Lenovo: 505-0010-00 09/2006

Lista telefonów do osób odpowiedzialnych za serwis gwarancyjny znajduje się w serwisie www.lenovo.com/support/phone. Numery telefonów mogą ulec zmianie bez powiadomienia.

Garantia Limitada da Lenovo - Informações ao Cliente

Leia a Garantia Limitada da Lenovo que consta do CD fornecido nesta remessa. A Garantia Limitada da Lenovo encontra-se disponível em 30 línguas, podendo ser visualizada através do CD do produto ou visitando o sítio da Web <http://www.lenovo.com/warranty>. Caso não consiga visualizar a Garantia Limitada da Lenovo, contacte o escritório local da Lenovo ou o seu revendedor para obter uma versão em formato papel da mesma.

Informações sobre garantia aplicáveis à Máquina:

1. Período de Garantia: 1 ano
2. Tipo de Serviço de Garantia: Unidade Substituível pelo Cliente ("CRU") e Serviço de Transporte Físico ou Envio pelo Correio da Responsabilidade do Cliente

3. Versão da Garantia Limitada da Lenovo: L505-0010-00 09/2006

Para obter serviço de garantia consulte a lista de números de telefone em www.lenovo.com/support/phone. Os números de telefone indicados estão sujeitos a alteração sem aviso prévio.

Garanția limitată Lenovo - Anunț pentru client

Vă rugăm să citiți Garanția limitată Lenovo pe CD-ul furnizat cu această livrare.

Garanția limitată Lenovo este disponibilă în 30 de limbi și poate fi vizualizată de pe CD-ul produsului sau vizitând <http://www.lenovo.com/warranty>. Dacă nu puteți vizualiza Garanția limitată Lenovo, contactați reprezentanța locală Lenovo sau reseller-ul pentru a obține o versiune tipărită.

Informații privind garanția aplicabile pentru Mașina dumneavoastră:

1. Perioada de garanție: 1 an
2. Tipul de service în garanție: Customer Replaceable Unit ('CRU') și Customer Carry-In sau Mail-In Service
3. Versiunea de Garanție limitată Lenovo: 505-0010-00 09/2006

Pentru service în garanție, consultați lista cu numere de telefon la www.lenovo.com/support/phone. Numerele de telefon pot fi schimbate fără notificare.

Заявление об ограниченной гарантии Lenovo - Замечания для заказчиков

Ознакомьтесь с Заявлением об ограниченной гарантии Lenovo на компакт-диске, входящем в комплект поставки. Заявление переведено на 30 языков; с ним можно ознакомиться на компакт-диске продукта или на Web-сайте <http://www.lenovo.com/warranty>. Если вы не можете просмотреть Заявление, то запросите в местном представительстве Lenovo или у торгового представителя отпечатанную версию Заявления об ограниченной гарантии.

Информация о гарантии для вашего компьютера:

1. Гарантийный срок: 1 год.
2. Тип гарантийного обслуживания: Обслуживание при отказе узлов, подлежащих замене силами заказчика (CRU), и обслуживание при доставке или пересылке по почте силами заказчика.
3. Версия Заявления об ограниченной гарантии Lenovo: 505-0010-00 09/2006

За гарантийным обслуживанием обращайтесь по телефонам, приведенным на Web-сайте www.lenovo.com/support/phone. Номера телефонов могут измениться без предварительного уведомления.

Obvestilo strankam o omejeni garanciji Lenovo

Prosimo, preberite izjavo o omejeni garanciji Lenovo (LLW), ki jo najdete na zgoščenci skupaj s to pošiljko.

LLW je na voljo v 30 jezikih in si ga lahko ogledate na CD-ju izdelka lahko pa tudi obiščete <http://www.lenovo.com/warranty>. Če si LLW ne morete ogledati, se obrnite na lokalno podružnico ali tržnega predstavnika podjetja Lenovo, kjer boste dobili natisnjeno različico LLW.

Garancijski pogoji, ki veljajo za vaš računalnik:

1. Garancijsko obdobje: 1 leta
2. Tip garancijskega servisa: servis za enote, ki jih zamenja stranka ("CRU") in servis z dostavo stranke ali servis s pošto dostavo
3. Različica omejene garancije Lenovo: 505-0010-00 09/2006

Za garancijski servis si oglejte seznam telefonskih števil na spletni strani www.lenovo.com/support/phone. Pridržujemo si pravico do spremembe telefonskih števil brez predhodnega obvestila.

Lenovogaranti - Information till kunden

Läs Garantivillkoren (Lenovo Limited Warranty, LLW) som finns på CD-skivan som ingår i den här leveransen. Garantivillkoren finns på 30 språk och du kan läsa dokumentet från CD-skivan eller genom att besöka <http://www.lenovo.com/warranty>. Om du inte kan komma åt dokumentet med garantivillkoren kontaktar du ditt lokala Lenovokontor eller en återförsäljare så kan du få en tryckt version av garantivillkoren.

Garantiinformation som gäller den här Maskinen:

1. Garantiid: 1 år
2. Typ av garantiservice: Kunden byter ut delar ("CRU" - Customer Replaceable Unit) och Kunden lämnar in (Customer Carry-In) eller skickar in (Mail-In) Maskinen på service
3. Begränsad garanti, version: L505-0010-00 09/2006

Telefonnummer till ställen där du kan få garantiservice finns på www.lenovo.com/support/phone. Telefonnummer kan komma att ändras utan att du meddelas om detta.

Guarantee supplement for Mexico

This supplement is considered part of the Lenovo Limited Warranty and shall be effective solely and exclusively for products distributed and commercialized within Territory of the Mexican United States. In the event of a conflict, the terms of this supplement shall apply.

All software programs pre-loaded in the equipment shall only have a thirty- (30) day guarantee for installation defects from the date of purchase. Lenovo is not responsible for the information in such software programs and/or any additional software programs installed by you or installed after purchase of the product.

Services not chargeable to the guarantee shall be charged to the final user, prior an authorization.

In the event that warranty repair is required please call the Customer Support Center at 001-866-434-2080, where you will be directed to the

nearest Authorized Service Center. Should no Authorized Service Center exist in your city, location or within 70 kilometers of your city or location, the guarantee includes any reasonable delivery charges related to the transportation of the product to our nearest Authorized Service Center. Please call the nearest Authorized Service Center to obtain the necessary approvals or information concerning the shipment of the product and the shipment address.

To obtain a list of Authorized Service Centers, please visit:

<http://www.lenovo.com/mx/es/servicios>

Manufactured by:

**SCI Systems de México, S.A. de C.V.
Av. De la Solidaridad Iberoamericana No. 7020
Col. Club de Golf Atlas
El Salto, Jalisco, México
C.P. 45680,
Tel. 01-800-3676900**

Marketing by:

**Lenovo de México, Comercialización y
Servicios, S. A. de C. V.
Alfonso Nápoles Gándara No 3111
Parque Corporativo de Peña Blanca
Delegación Álvaro Obregón
México, D.F., México
C.P. 01210,
Tel. 01-800-00-325-00**

Appendix C. Notices

Lenovo may not offer the products, services, or features discussed in this document in all countries. Consult your local Lenovo representative for information on the products and services currently available in your area. Any reference to a Lenovo product, program, or service is not intended to state or imply that only that Lenovo product, program, or service may be used. Any functionally equivalent product, program, or service that does not infringe any Lenovo intellectual property right may be used instead. However, it is the user's responsibility to evaluate and verify the operation of any other product, program, or service.

Lenovo may have patents or pending patent applications covering subject matter described in this document. The furnishing of this document does not give you any license to these patents. You can send license inquiries, in writing, to:

*Lenovo (United States), Inc.
500 Park Offices Drive, Hwy. 54
Research Triangle Park, NC 27709
U.S.A.
Attention: Lenovo Director of Licensing*

LENOVO GROUP LTD. PROVIDES THIS PUBLICATION "AS IS" WITHOUT WARRANTY OF ANY KIND, EITHER EXPRESS OR IMPLIED, INCLUDING, BUT NOT LIMITED TO, THE IMPLIED WARRANTIES OF NON-INFRINGEMENT, MERCHANTABILITY OR FITNESS FOR A PARTICULAR PURPOSE. Some jurisdictions do not allow disclaimer of express or implied warranties in certain transactions, therefore, this statement may not apply to you.

This information could include technical inaccuracies or typographical errors. Changes are periodically made to the information herein; these changes will be incorporated in new editions of the publication. Lenovo

may make improvements and/or changes in the product(s) and/or the program(s) described in this publication at any time without notice.

The products described in this document are not intended for use in implantation or other life support applications where malfunction may result in injury or death to persons. The information contained in this document does not affect or change Lenovo product specifications or warranties. Nothing in this document shall operate as an express or implied license or indemnity under the intellectual property rights of Lenovo or third parties. All information contained in this document was obtained in specific environments and is presented as an illustration. The result obtained in other operating environments may vary.

Lenovo may use or distribute any of the information you supply in any way it believes appropriate without incurring any obligation to you.

Any references in this publication to non-Lenovo Web sites are provided for convenience only and do not in any manner serve as an endorsement of those Web sites. The materials at those Web sites are not part of the materials for this Lenovo product, and use of those Web sites is at your own risk.

Any performance data contained herein was determined in a controlled environment. Therefore, the result obtained in other operating environments may vary significantly. Some measurements may have been made on development-level systems and there is no guarantee that these measurements will be the same on generally available systems. Furthermore, some measurements may have been estimated through extrapolation. Actual results may vary. Users of this document should verify the applicable data for their specific environment.

Recycling information

Lenovo encourages owners of information technology (IT) equipment to responsibly recycle their equipment when it is no longer needed.

Lenovo offers a variety of programs and services to assist equipment owners in recycling their IT products. Information on product recycling offerings can be found on Lenovo's Internet site at

<http://www.pc.ibm.com/ww/lenovo/about/environment/>.

環境配慮に関して

本機器またはモニターの回収リサイクルについて

企業のお客様が、本機器が使用済みとなり廃棄される場合は、資源有効利用促進法の規定により、産業廃棄物として、地域を管轄する県知事あるいは、政令市長の許可を持った産業廃棄物処理業者に適正処理を委託する必要があります。また、弊社では資源有効利用促進法に基づき使用済みパソコンの回収および再利用・再資源化を行う「PC 回収リサイクル・サービス」を提供しています。詳細は、

<http://www.ibm.com/jp/pc/service/recycle/pcrecycle/> をご参照ください。

また、同法により、家庭で使用済みとなったパソコンのメーカー等による回収再資源化が 2003 年 10 月 1 日よりスタートしました。詳細は、<http://www.ibm.com/jp/pc/service/recycle/pcrecycle/> をご参照ください。

重金属を含む内部部品の廃棄処理について

本機器のプリント基板等には微量の重金属（鉛など）が使用されています。使用後は適切な処理を行うため、上記「本機器またはモニターの回収リサイクルについて」に従って廃棄してください。

Trademarks

The following terms are trademarks of Lenovo in the United States, other countries, or both:

Lenovo

Lenovo logo

IBM is a trademark of International Business Machines Corporation in the United States, other countries, or both and is used under license.

Java and all Java-based trademarks and logos are trademarks or registered trademarks of Sun Microsystems, Inc. in the United States, other countries, or both.

Microsoft, Windows, and Windows NT are trademarks of Microsoft Corporation in the United States, other countries, or both.

ActionMedia, Intel, LANDesk, MMX, Pentium, and ProShare are trademarks of Intel Corporation in the United States, other countries, or both.

Other company, product, or service names may be trademarks or service marks of others.

Appendix D. Electronic emission notices

The following information refers to the Lenovo USB WebCam.

Federal Communications Commission (FCC) Declaration of Conformity

Lenovo USB WebCam- (41N5719)

This equipment has been tested and found to comply with the limits for a Class B digital device, pursuant to Part 15 of the FCC Rules. These limits are designed to provide reasonable protection against harmful interference in a residential installation. This equipment generates, uses, and can radiate radio frequency energy and, if not installed and used in accordance with the instructions, may cause harmful interference to radio communications. However, there is no guarantee that interference will not occur in a particular installation. If this equipment does cause harmful interference to radio or television reception, which can be determined by turning the equipment off and on, the user is encouraged to try to correct the interference by one or more of the following measures:

- Reorient or relocate the receiving antenna.
- Increase the separation between the equipment and receiver.
- Connect the equipment into an outlet on a circuit different from that to which the receiver is connected.
- Consult an authorized dealer or service representative for help.

Lenovo is not responsible for any radio or television interference caused by using other than recommended cables and connectors or by unauthorized changes or modifications to this equipment. Unauthorized changes or modifications could void the user's authority to operate the equipment.

This device complies with Part 15 of the FCC Rules. Operation is subject to the following two conditions: (1) this device may not cause harmful interference, and (2) this device must accept any interference received, including interference that may cause undesired operation.

Responsible party:

Lenovo (United States) Incorporated
5241 Paramount Parkway
Morrisville, NC 27650
Phone Number: 919-254-0532



Tested To Comply
With FCC Standards

FOR HOME OR OFFICE USE

Industry Canada Class B emission compliance statement

This Class B digital apparatus complies with Canadian ICES-003.

Avis de conformité à la réglementation d'Industrie Canada

Cet appareil numérique de la classe B est conforme à la norme NMB-003 du Canada.

**EU-EMC Directive (89/336/EEC) as amended by Directive 93/86/EEC EN 55022 class B
Statement of Compliance**

Deutschsprachiger EU Hinweis:

Hinweis für Geräte der Klasse B EU-Richtlinie zur Elektromagnetischen Verträglichkeit

Dieses Produkt entspricht den Schutzanforderungen der EU-Richtlinie 89/336/EWG zur Angleichung der Rechtsvorschriften über die elektromagnetische Verträglichkeit in den EU-Mitgliedsstaaten.

und hält die Grenzwerte der EN 55022 Klasse B ein.

Um dieses sicherzustellen, sind die Geräte wie in den Handbüchern beschrieben zu installieren und zu betreiben. Des Weiteren dürfen auch nur von der Lenovo empfohlene Kabel angeschlossen werden. Lenovo übernimmt keine Verantwortung für die Einhaltung der Schutzanforderungen, wenn das Produkt ohne Zustimmung der Lenovo verändert bzw. wenn Erweiterungskomponenten von Fremdherstellern ohne Empfehlung der Lenovo gesteckt/eingebaut werden.

Deutschland: Einhaltung des Gesetzes über die elektromagnetische Verträglichkeit von Geräten Dieses Produkt entspricht dem "Gesetz über die elektromagnetische Verträglichkeit von Geräten (EMVG)". Dies ist die Umsetzung der EU-Richtlinie 89/336/EWG in der Bundesrepublik Deutschland.

Zulassungsbescheinigung laut dem Deutschen Gesetz über die elektromagnetische Verträglichkeit von Geräten (EMVG) vom 18. September 1998 (bzw. der EMC EG Richtlinie 89/336) für Geräte der Klasse B Dieses Gerät ist berechtigt, in Übereinstimmung mit dem Deutschen EMVG das EG-Konformitätszeichen - CE - zu führen.

Verantwortlich für die Konformitätserklärung nach Paragraf 5 des EMVG ist die Lenovo (Deutschland) GmbH, Pascalstr. 100, D-70569 Stuttgart. Informationen in Hinsicht EMVG Paragraf 4 Abs. (1) 4:

**Das Gerät erfüllt die Schutzanforderungen nach EN 55024 und EN 55022 Klasse B.
European Union - Compliance to the Electromagnetic Compatibility Directive**

This product is in conformity with the protection requirements of EU Council Directive 89/336/ECC on the approximation of the laws of the Member States relating to electromagnetic compatibility. Lenovo cannot accept responsibility for any failure to satisfy the protection requirements resulting from a non-recommended modification of the product, including the fitting of option cards from other manufacturers.

This product has been tested and found to comply with the limits for Class B Information Technology Equipment according to European Standard EN 55022. The limits for Class B equipment were derived for typical residential environments to provide reasonable protection against interference with licensed communication devices.

Avis de conformité à la directive de l'Union Européenne

Le présent produit satisfait aux exigences de protection énoncées dans la directive 89/336/CEE du Conseil concernant le rapprochement des législations des Etats membres relatives à la compatibilité électromagnétique. Lenovo décline toute responsabilité en cas de non-respect de cette directive résultant d'une modification non recommandée du produit, y compris l'ajout de cartes en option non Lenovo.

Ce produit respecte les limites des caractéristiques d'immunité des appareils de traitement de l'information définies par la classe B de la norme européenne EN 55022 (CISPR 22). La conformité aux spécifications de la classe B offre une garantie acceptable contre les perturbations avec les appareils de communication agréés, dans les zones résidentielles.

Unión Europea - Normativa EMC

Este producto satisface los requisitos de protección del Consejo de la UE, Directiva 89/336/CEE en lo que a la legislación de los Estados Miembros sobre compatibilidad electromagnética se refiere.

Lenovo no puede aceptar responsabilidad alguna si este producto deja de satisfacer dichos requisitos de protección como resultado de una modificación no recomendada del producto, incluyendo el ajuste de tarjetas de opción que no sean Lenovo.

Este producto ha sido probado y satisface los límites para Equipos Informáticos Clase B de conformidad con el Estándar Europeo EN 55022. Los límites para los equipos de Clase B se han establecido para entornos residenciales típicos a fin de proporcionar una protección razonable contra las interferencias con dispositivos de comunicación licenciados.

Unione Europea - Directiva EMC (Conformidad electromagnética)

Questo prodotto è conforme alle normative di protezione ai sensi della Direttiva del Consiglio dell'Unione Europea 89/336/CEE sull'armonizzazione legislativa degli stati membri in materia di compatibilità elettromagnetica.

Lenovo non accetta responsabilità alcuna per la mancata conformità alle normative di protezione dovuta a modifiche non consigliate al prodotto, compresa l'installazione di schede e componenti di marca diversa da Lenovo.

Le prove effettuate sul presente prodotto hanno accertato che esso rientra nei limiti stabiliti per le apparecchiature di informatica Classe B ai sensi della Norma Europea EN 55022. I limiti delle apparecchiature della Classe B sono stati stabiliti al fine di fornire ragionevole protezione da interferenze mediante dispositivi di comunicazione in concessione in ambienti residenziali tipici.

Korea Class B Compliance

이 기기는 가정용으로 전자파 적합등록을 한 기기로서
주거지역에서는 물론 모든 지역에서 사용할 수 있습니다.

Japan VCCI Class B Compliance

この装置は、情報処理装置等電波障害自主規制協議会（VCCI）の基準に基づくクラスB情報技術装置です。この装置は、家庭環境で使用することを目的としていますが、この装置がラジオやテレビジョン受信機に近接して使用されると、受信障害を引き起こすことがあります。
取扱説明書に従って正しい取り扱いをして下さい。

Japanese statement of compliance for products less than or equal to 20 A per phase

高調波ガイドライン適合品

Lenovo product service information for Taiwan

台灣 Lenovo 產品服務資訊如下：
荷蘭商思惟電腦產品股份有限公司台灣分公司
台北市信義區信義路五段七號十九樓之一
服務電話：0800-000-700

lenovo[™]

Part Number: 41N5719

Printed in USA

(1P) P/N: 41N5719

