



IBM ThinkPad[®]

USB Portable Diskette Drive

User's Guide

OPTIONS
by **IBM**

CAUTION

Before installing this product, read the ThinkPad System *Safety Booklet*

Note

Be sure to keep your proof of purchase, because it might be required for warranty services.
(See Appendix A.)

First Edition (March 2000)

The following paragraph does not apply to the United Kingdom or any country where such provisions are inconsistent with local law:

INTERNATIONAL BUSINESS MACHINES CORPORATION PROVIDES THIS PUBLICATION "AS IS" WITHOUT ANY WARRANTY OF ANY KIND, EITHER EXPRESS OR IMPLIED, INCLUDING, BUT NOT LIMITED TO, THE LIMITED WARRANTIES OF MERCHANTABILITY OR FITNESS FOR A PARTICULAR PURPOSE. Some states do not allow disclaimers or express or implied warranties in certain transactions; therefore, this statement may not apply to you.

This publication could include technical inaccuracies or typographical errors. Changes are periodically made to the information herein; these changes will be incorporated in new editions of the publication. IBM may make improvements or changes in the products or the programs described in this publication at any time.

It is possible that this publication may contain reference to, or information about, IBM products (machines and programs), programming, or services that are not announced in your country. Such references or information must not be construed to mean that IBM intends to announce such IBM products, programming, or services in your country.

Requests for technical information about IBM products should be made to your IBM authorized dealer or your IBM marketing representative.

© Copyright International Business Machines Corporation 2000. All rights reserved.

Note to U.S. Government Users — Documentation related to restricted rights — Use, duplication or disclosure is subject to restrictions set forth in GSA ADP Schedule Contract with IBM Corp.

Contents

| | |
|--|------|
| Part 1. About the USB Portable Diskette Drive | 1-1 |
| Checking the shipping items in the package | 1-1 |
| Using the USB Portable Diskette Drive | 1-1 |
| Operating systems supported | 1-1 |
| Installing the driver for the USB diskette drive | 1-2 |
| | |
| Part 2. Appendixes | 2-1 |
| Appendix A. Help and Service Information | 2-1 |
| Online technical support | 2-1 |
| Telephone technical support | 2-2 |
| Appendix B. Product Warranty | 2-2 |
| Appendix C. Notices | 2-12 |
| Trademarks | 2-12 |
| Electronic Emission Notices | 2-13 |

Part 1. About the USB Portable Diskette Drive

Checking the shipping items in the package

Match the items in this list with the items in the IBM® ThinkPad® USB Portable Diskette Drive package. If any item is missing or damaged, please contact your place of purchase.

- | | |
|--|---|
| <input type="checkbox"/> USB portable diskette drive | <input type="checkbox"/> CD-ROM for driver |
| <input type="checkbox"/> Carrying case | <input type="checkbox"/> User's guide (this book) |

Using the USB Portable Diskette Drive

The IBM ThinkPad *USB Portable Diskette Drive* (hereafter called the *USB diskette drive*) is for use with all models of ThinkPad computers that have a USB port.

If you are not sure where the USB port on your computer is, refer to the user's manual.

To use the USB diskette drive, you will need to have the driver for it installed on your computer. If your operating system is Microsoft® Windows® 2000, the driver is installed automatically when you connect the USB diskette drive to your computer. If the operating system is Windows 98, you will need to install the driver; the procedure begins on page 1-2.

Note: When you set up the USB diskette drive successfully, a drive letter is assigned to it. Unlike a general diskette drive, it is not always drive A. The drive letter assigned depends on the configuration of the computer you use.

If you are not sure whether this diskette drive can be connected to your computer, contact your IBM authorized dealer or IBM marketing representative.

Operating systems supported

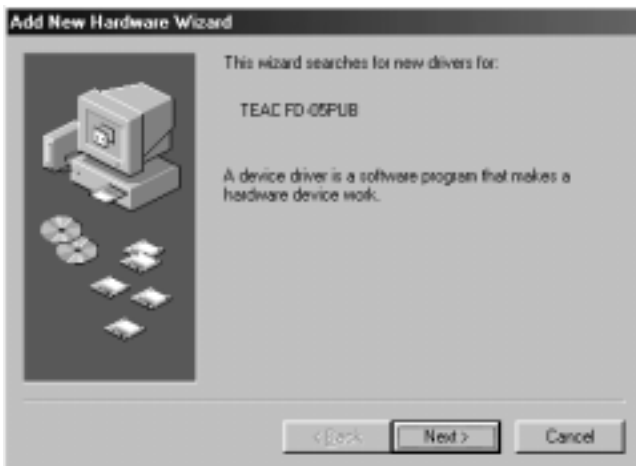
The USB diskette drive can be used with either of the following operating systems:

- Windows 98
- Windows 2000

Installing the driver for the USB diskette drive

To use the USB diskette drive in the Windows 98 environment, you need to install the driver from the CD-ROM provided in this package. Insert the CD-ROM into the CD-ROM drive of your computer.

- I** When you connect the USB diskette drive to your ThinkPad computer, the **Add New Hardware Wizard** window appears.



- 2** Click **Next**.
⇒ The following window appears:



- 3 Click **Next** to go on to the next step.
⇒ The following window appears:



If the checkbox for **Specify a location** is checked when this window appears, clear it and click on the checkbox for **CD-ROM drive** .

- 4 Click **Next** to install the driver.
- 5 Follow the instructions on the screen.