



# IBM 128 MB USB 2.0 高速存储键

## 用户指南





# IBM 128 MB USB 2.0 高速存储键

## 用户指南

第一版 (2004 年 4 月)

© Copyright International Business Machines Corporation 2004. All rights reserved.

# 目录

前言	v
注册选项	v
<b>第 1 章 简介</b>	<b>1-1</b>
<b>第 2 章 安装要求</b>	<b>2-1</b>
在 Windows 2000 或 Windows XP 中安装存储键	2-1
<b>第 3 章 MyKey</b>	<b>3-1</b>
系统设置	3-1
安装	3-1
MyKey 定制	3-2
设置首选项	3-3
选择语言	3-4
隐藏 / 显示	3-4
帮助	3-4
关于	3-4
退出	3-4
MyKey 弹出式消息	3-4
Memory key console (存储键控制台)	3-4
LCD	3-5
按钮	3-5
个性化存储键	3-6
MyKey 个性化图标	3-7
MyKey 个性化声音	3-7
MyKey 个性化标签	3-7
存储键版本	3-7
高级功能	3-7
登录 / 注销保密区	3-8
启用 / 禁用写保护	3-8
同步选项	3-8
创建个人文件夹	3-10
其它功能	3-11
发送至存储键驱动器	3-11
自动运行	3-11
故障诊断	3-12
常见问题解答 (FAQ)	3-12
如何联系我们	3-12

<b>第 4 章 使用多语言 KeySafe</b>	<b>4-1</b>
系统要求	4-1
入门	4-1
创建保密区	4-1
使用保密区	4-3
注销保密区	4-4
定制设置	4-4
桌面	4-4
更改密码	4-5
更改保密区	4-5
常见问题解答 (FAQ)	4-6

<b>第 5 章 KeySafe 和 MyKey 在非管理员方式下</b>	<b>5-1</b>
系统要求	5-1
安装说明	5-1
卸载服务	5-1

<b>第 6 章 使用 IBM 存储键引导实用程序</b>	<b>6-1</b>
系统设置要求	6-1
创建 IBM 引导存储键	6-1
用 IBM 存储键引导计算机	6-2
故障诊断	6-2

<b>附录 A. Service and Support</b>	<b>A-1</b>
Online technical support	A-1
Telephone technical support	A-1

<b>附录 B. IBM Statement of Limited Warranty - Z125-4753-07 - 11/2002</b>	<b>B-1</b>
<b>Part 2 - Country-unique Terms</b>	B-4
<b>Part 3 - Warranty Information</b>	B-16

<b>附录 C. Notices</b>	<b>C-1</b>
Trademarks	C-2
Federal Communications Commission (FCC) statement	C-2



---

## 前言

本手册包含安装和使用 IBM® 128 MB USB 2.0 高速存储键的说明。

您的选件包中包含以下物品：

- IBM 128 MB USB 2.0 高速存储键
- *IBM 128 MB USB 2.0 高速存储键 CD*
- 《快速入门指南》

如果以上列出的任何物品缺少或损坏，请与购买处联系。请务必保留您的购货凭证，接受保修服务时可能需要它。

可在 *IBM 128 MB USB 2.0 高速存储键 CD* 中获取以下列语言显示的本用户指南：

- 巴西葡萄牙语
- 英语
- 法语
- 德语
- 意大利语
- 日语
- 简体中文
- 西班牙语
- 繁体中文

---

## 注册选件

感谢您购买该 IBM 产品。请花点时间注册您的产品，并向我们提供有助于 IBM 将来更好地为您服务的信息。您的反馈对于我们在开发对于您来说相当重要的产品和服务，以及寻找更好的与您沟通的方式方面是很宝贵的。请在以下 IBM Web 站点注册您的选件：

<http://www.ibm.com/pc/register/>

IBM 将向您发送有关您所注册的产品信息和更新，除非您在 Web 站点的调查表中表明您不希望接收进一步的信息。





---

## 第 1 章 简介

IBM 128 MB USB 2.0 高速存储键是小型便携式 USB 存储设备，它使您能够通过工作的 USB 端口在任何笔记本电脑和台式机系统间共享数据，而无需使用软盘。此存储键提供远大于 1.44 MB 软盘的空间来存储文本、演示文稿、电子表格或多媒体文件。

本手册解释了 IBM 128 MB USB 2.0 高速存储键在 Microsoft® Windows® 2000 Professional 和 Windows XP 中的安装和使用。



---

## 第 2 章 安装要求

在安装 IBM 128 MB USB 2.0 高速存储键之前，请确保您具有：

- 以下操作系统之一：
  - Windows 2000
  - Windows XP
- 可用的 USB 接口

如果要使存储键作为可引导设备使用，则需要以下可选项。请参阅第 6-1 页的第 6 章，『使用 IBM 存储键引导实用程序』。

- 支持可引导 USB 存储设备的 BIOS。如果不确定 BIOS 是否支持可引导 USB 设备，请联系计算机制造商。如果需要，则可能存在可用的更新。
- 随计算机或 BIOS 更新一起提供的 BIOS 文档（如果适用）。

---

### 在 Windows 2000 或 Windows XP 中安装存储键。

Windows 2000 和 Windows XP 具有对 USB 2.0 存储键的内置支持，无需设备驱动程序。只要将存储键连接到 USB 接口即可。存储键现在已可使用，并显示为带有指定盘符（例如，E:）的可移动磁盘。



---

## 第 3 章 MyKey

MyKey 是使您能够通过存储键控制台访问并定制存储键的工具。消息和提示逐步指导您完成简短的 MyKey 安装、使用和定制过程，使您能将存储键变得更个性化、更有趣和更易于使用。本章还包含了一些重要的常见问题解答 (FAQ)。

---

### 系统设置

计算机必须满足以下要求才能安装并使用 MyKey：

- Pentium® II 266MHz
- 1.7 MB 可用磁盘空间（在驱动器 C 上）
- 操作系统：Windows 2000 或 Windows XP

MyKey 应用程序在管理员和非管理员方式下工作。有关更多信息，请参阅第 5-1 页的第 5 章，『KeySafe 和 MyKey 在非管理员方式下』。

要达到最佳性能，该存储键可以选择与支持 24 位真彩色深度的图形加速器一起使用。

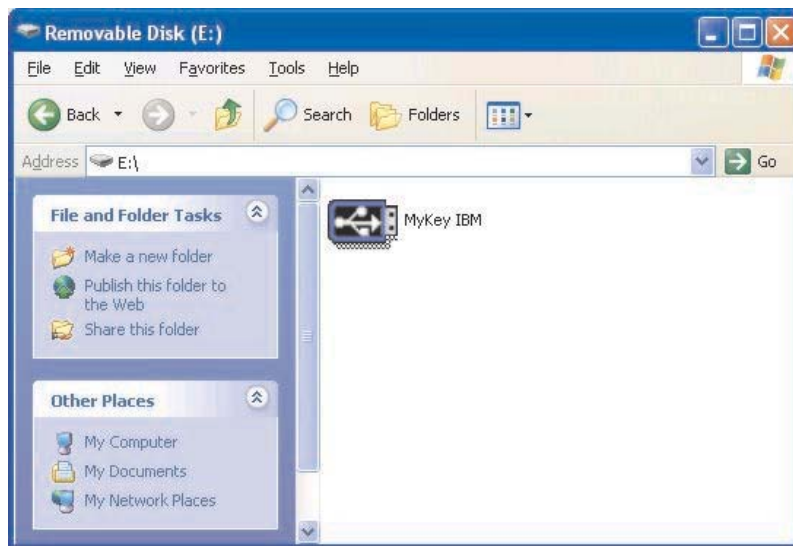
---

### 安装

IBM 128 MB 2.0 高速存储键支持 MyKey 应用程序。如果存储键支持 Mykey，请确保您有最新版本的 MyKey（可以从 <http://www.ibm.com/pc/support> 下载，并在 128 MB USB 2.0 High Speed Memory Key 下搜索）。

要安装 MyKey，请执行以下操作：

1. 插入随该存储键一起提供的 *IBM 128 MB USB 2.0 高速存储键 CD*，并打开“Software”文件夹。
2. 双击 **MyKey** 图标。



3. 在安装屏幕上，如果要在桌面上创建 MyKey 的快捷方式则选中复选框。MyKey 和 Uninstall MyKey 的快捷方式自动在“开始”菜单中创建。单击 **Finish** 开始使用 MyKey，或单击 **Cancel** 放弃安装。

注：缺省情况下，MyKey 自动用 Windows 装入。可以从 Settings 窗口禁用此选项。



稍候片刻，直到 MyKey 图标添加到屏幕底部的系统托盘中，位于时钟旁边。使用此图标能最方便最快速地访问 MyKey 的所有功能。

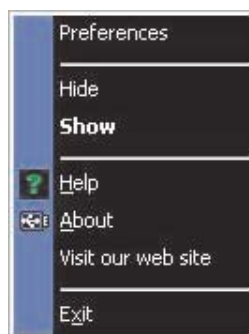


要卸载 MyKey 应用程序，请单击开始 → 全部程序 → **MyKey IBM** → **Uninstall MyKey IBM**。

---

## MyKey 定制

要打开主菜单访问 MyKey 的功能，请右键单击 MyKey 的托盘图标。此菜单中的每个选项在下面都有所描述。



## 设置首选项

单击 **Preferences** 来设置 MyKey 首选项。单击任意选项以启用或禁用它。



### Visual indication

每当您将存储键插入计算机的 USB 接口中时，此图标显示存储键控制台。

### Audio indication

当您将存储键插入计算机的 USB 接口中时将发出此声音。

### Splash screen

当装入 MyKey 时，显示此屏幕。

### Autorun process

此过程根据存储键中设置的自动运行指示信息自动启动各种应用程序，这类似于 CD-ROM 自动运行。有关高级自动运行功能的信息，请参阅第 3-11 页的『其它功能』。

### Load with Windows

缺省情况下，当 Windows 开始启用存储键高级功能时，装入 MyKey。如果禁用此功能，您将需要从计算机“开始”菜单手动启动 MyKey。

### Creat desktop shortcut

此操作在桌面上创建或除去 MyKey 的快捷方式。

### Always on top

缺省情况下，存储键控制台浮动在所有窗口前面以便能快速而方便地访问它。如果禁用此功能，则存储键控制台变成普通窗口。

## 选择语言

要选择首选语言，请执行以下操作：

1. 选择首选语言。受支持的语言有英语、法语、西班牙语、意大利语、德语、葡萄牙语、中文（繁体或简体）或日语。只有受支持的语言才显示在组合框中。所选语言是否正确显示取决于您所使用的特定 Windows 版本以及您选择的系统位置（控制面板 → 区域设置）。如果 Windows 不支持您选择的语言，则显示“？”而不是语言名称。
2. 请确保您阅读了显示在语言选择组合框旁边的欢迎消息。如果您可以阅读此消息，则单击 **OK** 来执行语言更改。所有的屏幕快照和文本将根据所选的语言进行更改。

## 隐藏 / 显示

单击 **Hide** 或 **Show** 来关闭或显示存储键控制台屏幕。

## 帮助

此选项启动 IBM 支持站点，在那里您将能够搜索有关存储键及其应用程序的信息。

## 关于

此选项提供有关当前版本的信息。

## 退出

退出 MyKey 时将禁用存储键快速访问和高级功能。

---

## MyKey 弹出式消息

MyKey 使用弹出式消息（如下所示）来提供信息或通知存储键的事件。这类消息在几秒钟后自动消失，或者您可以单击它将其立即关闭。



---

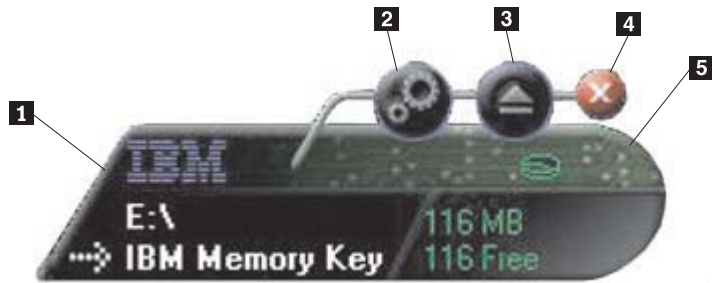
## Memory key console (存储键控制台)

存储键控制台使您能够访问存储键以存储和检索文件、启动已安装的应用程序以及定制存储键。

存储键控制台显示存储键徽标、存储键盘符和存储键标签。要使用个性化图标或标签更改此显示，请参阅第 3-7 页的『MyKey 个性化图标』。要移动存储键控制台，请在其



中的任何地方单击并按住鼠标左键，将它拖到另一个位置，然后释放鼠标左键。



- 1 浏览
- 2 工具
- 3 弹出

- 4 关闭
- 5 LCD 显示器

## LCD

液晶显示屏（LCD）显示了存储键的总容量和可用空间。当总磁盘空间的可用空间为 5% 或更少时，可用空间指示灯变成红色。

### 保密区指示

以下所示的 LCD 显示器表明您是否使用 KeySafe 登录到保密区。



### 写保护指示

以下所示的 LCD 显示器表明您的存储键是否为写保护的。关于写保护的进一步详细信息，请参阅第 3-8 页的『启用 / 禁用写保护』。



## 按钮

单击以下描述的任一按钮来启用它们。

### 工具

此工具按钮打开存储键控制台菜单。此菜单包含存储键控制台设置选项（请参阅第 3-4 页的『Memory key console（存储键控制台）』）、高级功能（例如,同步）以及个人文件夹。

## 浏览

单击存储键浏览按钮在 Windows 资源管理器中打开存储键驱动程序并访问您所有的文件（那些在保密区受保护的文件和公共文件）。

## 关闭（X）

单击 **X** 来关闭存储键控制台。控制台会在托盘图标中消失，并且将显示消息“Exiting Memory Key by Clicking X”，提示您该程序将继续在任务栏中运行。当您以这种方式退出时不想显示这条消息，请单击复选框。



要再次打开存储键控制台，请双击托盘图标或从 MyKey 菜单中选择 **Show**（请参阅第 3-2 页的『MyKey 定制』）。

## 弹出

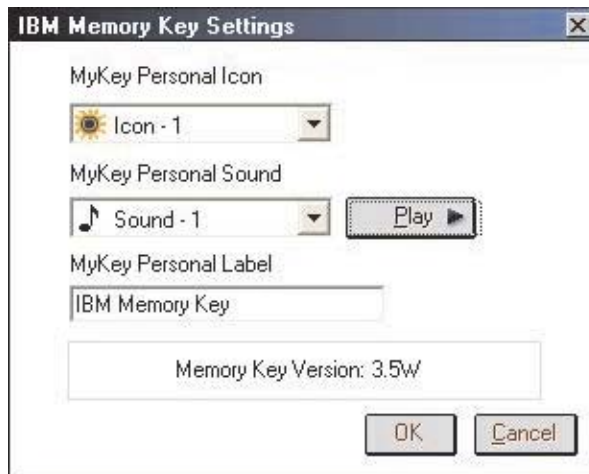
弹出按钮帮助您在卸下存储键之前确保存储在它上面的所有数据的完整性。单击弹出，等待安全卸下消息，然后卸下存储键。对于 Windows 2000 和 Windows XP 以外的所有操作系统，也可以选择使用托盘菜单中的绿色键头来安全地卸下存储键。

**警告：** 不使用弹出按钮或绿色箭头卸下存储键会导致数据丢失！

---

## 个性化存储键

要用自己的图标、特殊的声音或自己的标签来个性化存储键，请单击存储键控制台上的工具按钮并选择 **Settings**（请参阅第 3-2 页的『MyKey 定制』）。显示 Memory Key Settings 窗口。



## MyKey 个性化图标

要更改缺省图标，请打开 MyKey Personal Icon 组合框并从这些选项中选择：

- 选择 MyKey 中 11 个图标的任意一个。
- 通过浏览您创建的或要从 Web 下载的文件来选择一个图标文件。

单击 **OK** 应用此更改。

注：如果存储键是写保护的，则此操作将失败。

## MyKey 个性化声音

要更改缺省声音，请打开 MyKey Personal Sound 组合框并从这些选项中选择：

- 选择 MyKey 中 10 种声音的任意一种。
- 通过浏览您创建的或要从 Web 下载的文件来选择一个不同的声音。可以通过单击 **Play** 来收听您选择的任何声音。单击 **OK** 应用此更改。

注：如果存储键是写保护的，则此操作将失败。

## MyKey 个性化标签

要个性化存储键并简化内容标识，请输入个性化标签，例如您的名字或类别（最多 14 个字符）来标识存储键的内容。

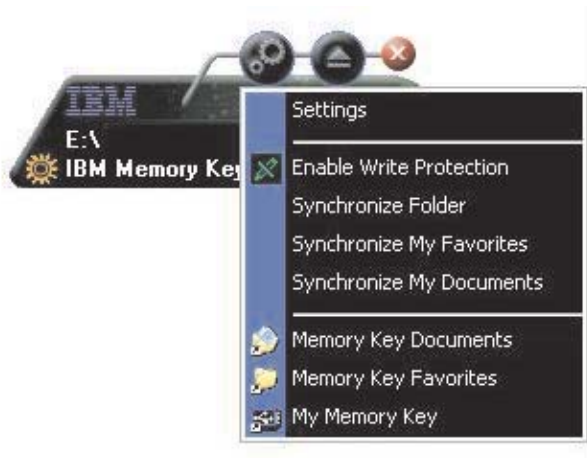
## 存储键版本

存储键版本是 Memory Key Preferences 窗口中列出的最后一项。如果您要联系“技术支持”寻求帮助，则您需要此信息。

---

## 高级功能

当 MyKey 运行时，您可以访问许多高级功能，这些功能使存储键更易于使用。单击工具，然后单击 Advanced Features 菜单中的选项。本节将描述这些功能。



## 登录 / 注销保密区

如果使用 KeySafe 在存储键上创建了保密区，则可以通过在 Login Privacy Zone 窗口中提供正确的密码方便地登录 / 注销这个区域。在第五次登录尝试失败后，请安全地弹出存储键，重新将它插入托盘，验证您的密码，然后再次尝试登录。

在成功登录到保密区后，窗口中的文本更改为 Logout Privacy Zone。要注销，只要单击 Advanced Features 菜单中的这个选项即可。



## 启用 / 禁用写保护

当将存储键插入安全性和完整性都不能保证的计算机时为了防止它遭到病毒侵入或丢失数据，MyKey 使您能够对存储键进行写保护。这将防止受保护的文件被删除、创建或修改。

## 同步选项

MyKey 同步选项加快并简化您在两台或更多台计算机间的同步过程，或仅备份文件。可用的同步选项包括：

- **Folder:** 此选项同步所有的文件夹和子文件夹。
- **My Favorites:** 此选项同步计算机上的“收藏夹”文件夹和存储键上的 Favorites 文件夹。
- **My documents:** 此选项同步计算机上的“我的文档”文件夹和存储键上的 Documents 文件夹。

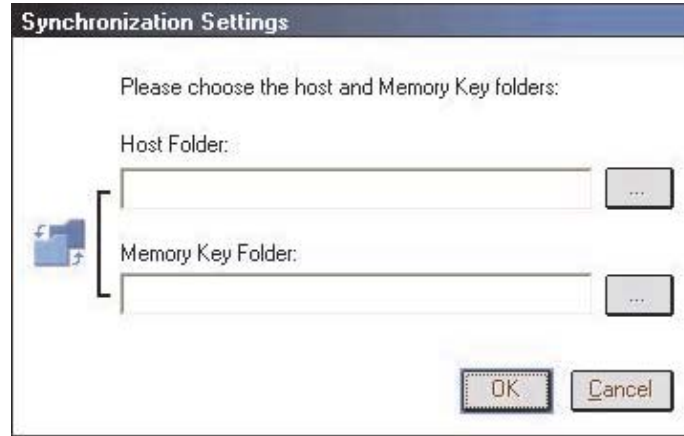
### 首次文件夹使用

要首次启用文件夹同步，请继续执行如下步骤：

1. 从 MyKey Console Tools 菜单选择 **Synchronize Folders**。您在新计算机上或对新存储键首次使用同步功能时，Synchronization Settings 窗口将打开。
2. 选择您想要同步的文件夹。第一个文件夹必须是现有的本地文件夹。第二个文件夹必须是现有的存储键文件夹。

注：如果在本地和存储键文件夹中存在相同的文件，则当您首次尝试同步这两个文件时，MyKey 将不知道哪个文件是最新的版本。所以，请确保指定不同的名称。

3. 单击 **OK** 启动同步过程或单击 **Cancel** 退出。



### 后续文件夹使用

在选择了要同步的文件夹后，请如下继续执行：

1. 从 **MyKey Console Tools** 菜单选择 **Synchronize Folders**。此操作打开 **Synchronization Details** 窗口。显示必需的操作列表，等待您的确认。
2. 单击 **Settings** 来访问 / 更改显示的设置。
3. 单击 **Synchronize** 来授权所有的文件操作（不能选择部分列表）。



4. 如果在文件操作中发生错误（例如，磁盘已满或有错误的路径或文件），则显示错误消息。单击 **OK** 继续同步剩余的文件或单击 **Cancel** 停止该过程。
5. 当显示表明同步完成的消息时，单击 **OK**。

### 文件夹同步规则

以下规则适用于同步过程：

- **New file:** 如果在任何文件夹中创建了新文件，MyKey 使您能够在其它一个或多个文件夹中创建相同的文件。
- **Deleted file:** 如果在任何文件夹中删除了某个文件，MyKey 使您能够在其它一个或多个文件夹中删除此文件。
- **Modified file:** 如果在任何文件夹中修改了某个文件，MyKey 使您能够在其它一个或多个文件夹中替换此文件。如果在所有文件夹中修改了此文件，MyKey 使您能够跳过此文件而无需执行任何操作。
- **Renamed file:** 重命名文件等同于删除它，然后创建一个新的文件。所以，此处适用 Deleted file 的规则。

## 创建个人文件夹

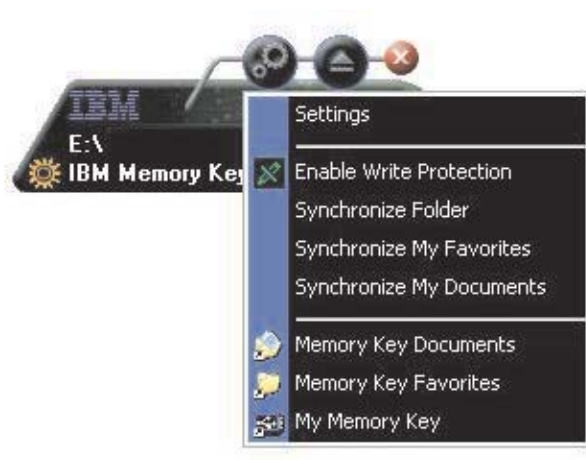
个人文件夹是帮助您分类或组织文件以能进行快速检索的文件夹。要创建个人文件夹，请如下继续执行：

1. 单击 **OK** 确认要创建个人文件夹。



创建以下目录：

- My Memory Key，与“桌面”类似，存储您频繁访问的普通文件。
  - Memory Key Documents，与“我的文档”文件夹类似，存储工作文件。此文件夹存储来自 Synchronize My Documents 操作的文件。
  - Memory Key Favorites，类似于“收藏夹”文件夹，存储了您所喜爱的网页。此文件夹存储来自 Synchronize My Favorites 操作的文件。
2. 要访问个人文件夹中的任何文件，您可以执行以下操作之一：
    - 从“Windows 资源管理器”打开“我的配置”文件夹。
    - 单击存储键控制台上的工具来显示并访问文件。

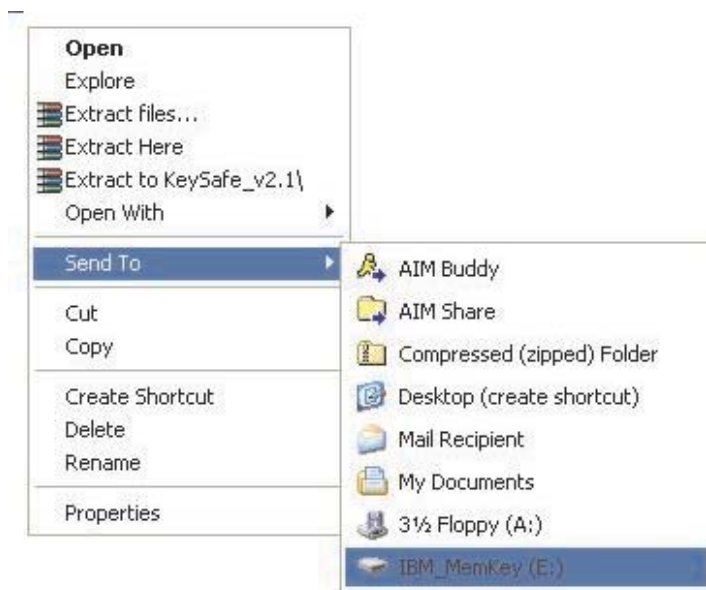


## 其它功能

存储键还有另外两个功能，描述如下。

### 发送至存储键驱动器

您指定的存储键驱动器自动添加到 Send to 菜单，使您能够右键单击文件并将它保存到存储键驱动器上。



### 自动运行

MyKey 自动运行功能使多种类型的文件（比如超文本标记语言（HTML）Web 页面）能够在您将存储键插入计算机 USB 端口的时候自动启动。

MyKey 运行并执行存储键的 autorun.ini 文件。可以从 MyKey Settings 窗口禁用此功能。MyKey 自动运行语法与 CD-ROM 自动运行语法稍有不同，应用更广泛。

典型的 autorun.inf 文件包含两行文本格式（ASCII）的命令来启动文件 start.htm。例如，启动存储键 Web 页面的 autorun.inf 文件的语法可能为：

```
[launcher]
```

```
open=www.memorykey.com
```

又如，启动 Windows 计算器（calc.exe）的 autorun.inf 文件的语法可能为：

```
[launcher]
```

```
open=calc.exe
```



---

## 故障诊断

MyKey 显示许多消息，尽可能提供有关故障诊断的指导，如下所示：

- Fatal error - 这种一般的错误消息表明发生了严重错误，应用程序因此不能恢复。
- Windows version not supported - 如果您尝试在不受支持的 Windows 版本上运行 MyKey，则显示此消息。（请参阅第 3-1 页的『系统设置』。）
- Large fonts - MyKey 设计为使用小字体，如果使用大字体，它可能不能提供最优化的显示视图。要切换至小字体，请打开控制面板并按以下顺序进行选择：

显示器属性 → 设置 → 高级 → 字体大小。

- Unable to connect to Memory Key - 此消息表明 MyKey 从存储键获取信息（比如版本号、容量、个人设置等等）时失败。
- Unable to eject Memory Key - 此消息通常表明在尝试卸下存储键之前您还未关闭其上的所有应用程序或文件。关闭任何打开的应用程序或文件，然后再次尝试卸下存储键。
- The device 'xxx' cannot be stopped right now. Try stopping the device again later - 此消息在 Unplug or Eject Hardware 窗口中单击 **Stop** 后出现。它通常表明在尝试卸下存储键之前您还未关闭其上的所有应用程序或文件。关闭 MyKey 应用程序然后重试。如果此消息再次显示，则关闭所有打开的应用程序或文件，然后再次尝试卸下存储键。

注：这条消息由操作系统而非 MyKey 应用程序生成，且仅出现于 Windows XP 或 Windows 2000 中。

---

## 常见问题解答 (FAQ)

以下列出了最常见问题解答中的几个。

问：如何检查我所使用的 MyKey 的版本？

答：最简单的方法就是右键单击 MyKey 的托盘图标，然后单击 **About**。

问：我可以在计算机上将 MyKey 和多个存储键一起使用吗？

答：可以。

问：为什么我不能将文件复制到存储键？

答：您的存储键可能是写保护的，或者您可能没有足够的可用空间。如果存储键是写保护的，则您将在 MyKey 控制台的 LCD 显示器上看到 Write Protection 徽标。

问：在关闭了存储键控制台后如何恢复它呢？

答：双击或右键单击 MyKey 的托盘图标并选择 **Show**。

---

## 如何联系我们

请参阅第 A-1 页的附录 A，『Service and Support』以获取联系信息。



---

## 第 4 章 使用多语言 KeySafe

KeySafe 使您能够在 IBM 存储键上创建并访问受密码保护的安全区域，称为保密区。消息和提示指导您逐步使用密码来设置 KeySafe 以及定制保密区使其适应您个人和业务上保护信息的需求。此文本总结了这些过程，也包含一些“常见问题解答 (FAQ)”。

---

### 系统要求

- Pentium II 266MHz
- 800KB 可用磁盘空间
- 操作系统：Windows 2000 或 Windows XP
- 访问主驱动器的权限（通常是驱动器 C）

KeySafe 应用程序在管理员和非管理员方式下工作。有关更多信息，请参阅第 5-1 页的第 5 章，『KeySafe 和 MyKey 在非管理员方式下』。

要达到最佳性能，请将存储键与支持 24 位真彩色深度的图形加速器一起使用。

---

### 入门

**警告：** 当创建保密区时，将格式化存储键，且“所有”数据将丢失。请在创建保密区前备份您的文件。

### 创建保密区

要创建保密区，请执行以下操作：

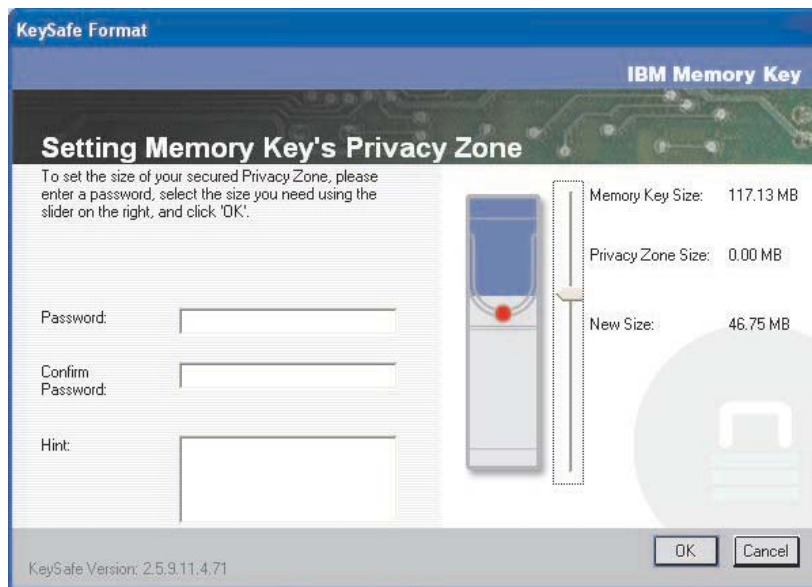
1. 选择已指定给存储键的可移动软盘驱动器，并双击 **KeySafe** 图标。
2. 从语言窗口选择首选语言，并单击 **OK**。受支持的语言有英语、法语、西班牙语、意大利语、德语、葡萄牙语（巴西）、中文（繁体或简体）和日语。



3. 在阅读了 KeySafe Welcome 窗口后单击 **OK** 以继续。



4. 在 KeySafe Format 窗口的相应字段输入以下信息：
  - a. 密码（必需）
  - b. 重新输入相同的密码进行确认（必需）
  - c. 使您能记起密码的提示（可选）
  - d. 在存储键滑动条上移动滑动条（向上或向下）以在首次创建保密区时指定其大小。保密区最大限制为存储键容量的 90%。受保护的区域将显示为蓝色。



5. 当设置了保密区大小后，单击 **OK**。

6. 要继续格式化操作，请单击 **OK**。在完成格式化操作后，再次单击 **OK**。现在您可以登录到保密区。



## 使用保密区

要使用保密区，请执行以下操作：

1. 双击桌面上的 **KeySafe** 图标。此操作打开 KeySafe Login 窗口。



2. 要登录到保密区，请输入密码并单击 **OK**。如果忘记了密码，请单击 **Hint**。如果输入错误的密码，您将接收到一条消息。如果忘记了密码，在 KeySafe Login 窗口中打开 Hint 字段以获得帮助。输入正确的密码后，将显示成功登录的消息。

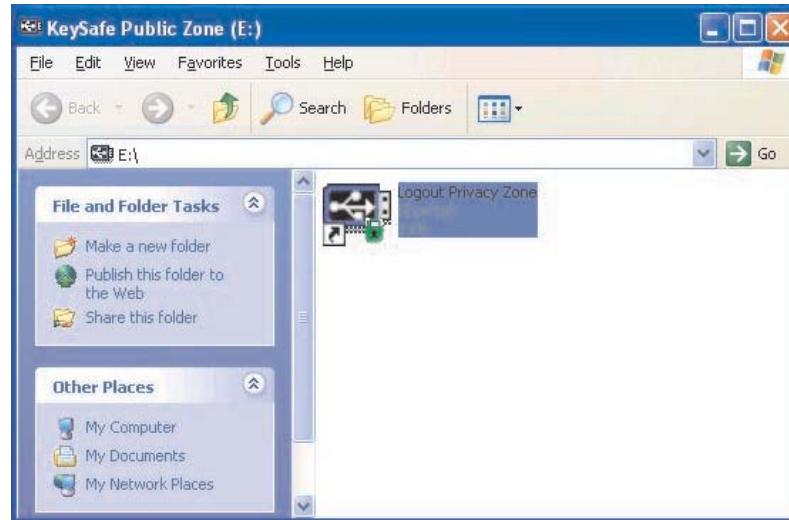


3. 如果在五次尝试后您仍未成功输入密码，KeySafe 将自动终止以保护受保护的数据。如果该终止发生，则卸下存储键然后重新插入。在存储键再次锁定之前，此操作将给您另外五次输入正确密码的尝试机会。

## 注销保密区

要注销保密区，请执行以下操作：

1. 保存并关闭所有从存储键打开的文件。
2. 双击 **KeySafe** 图标。



3. 在 KeySafe Logout 窗口中单击 **OK** 来注销。

---

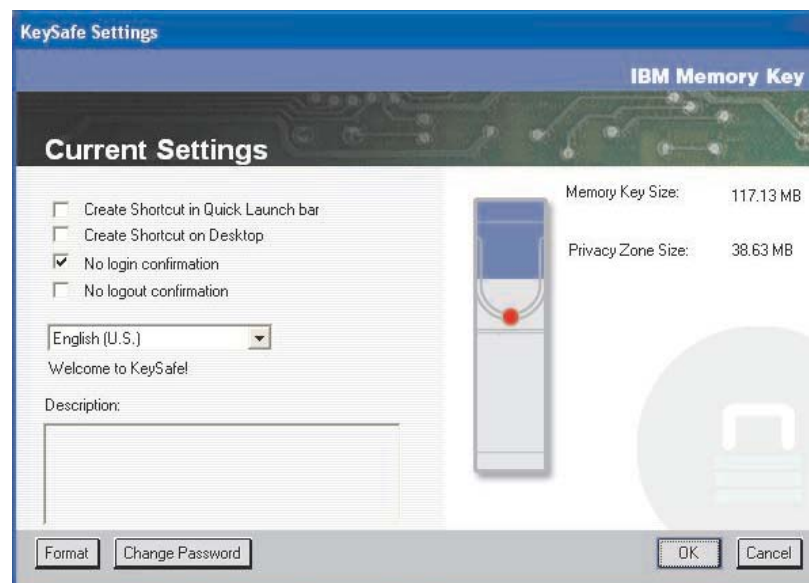
## 定制设置

桌面和密码的设置可以定制，描述如下。

### 桌面

要定制桌面，请执行以下操作：

1. 要为桌面定制 KeySafe，请在 KeySafe Login 窗口中单击 **Settings**。此操作打开以下所示的 KeySafe Settings 窗口。

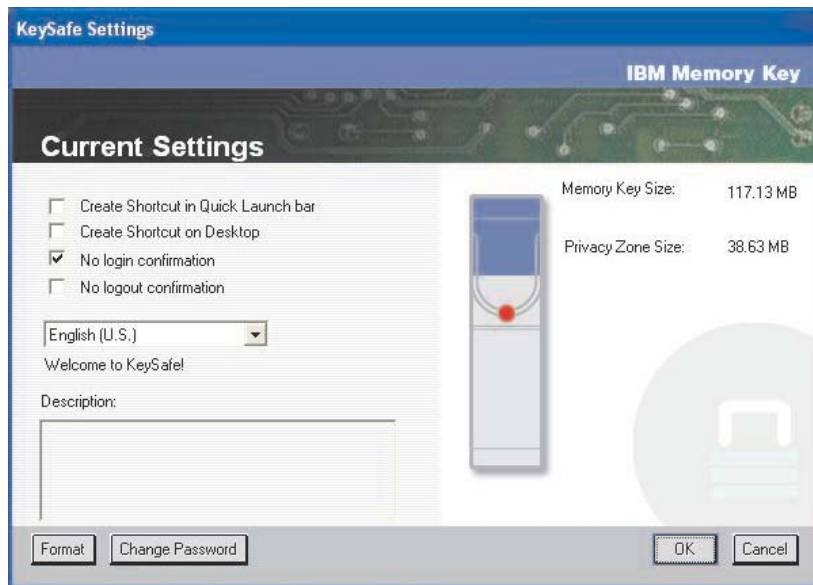


2. 单击所列选项中的任何一个来选中它们（当鼠标放置到每个选项上时，Description 字段中有它们的描述），这些选项包括：
  - Create Shortcut in Quick Launch Bar
  - Create Shortcut on Desktop
  - No login confirmation
  - No logout confirmation
  - Language selection

## 更改密码

KeySafe 的较新版本使您能够用 KeySafe Settings 窗口中的 **Change Password** 按钮来更改密码。要使用 **Change Password** 按钮，请执行以下操作：

1. 在 KeySafe Login 窗口中单击 **Settings**。此操作打开以下所示的 KeySafe Settings 窗口。



2. 单击 **Change Password** 打开一个对话框。
3. 依次输入您的当前（原有）密码、新密码，再次输入新密码进行确认并输入提示。
4. 单击 **OK** 退出此对话框。

**警告：** 当不使用 **Change Password** 按钮更改密码时，存储键将格式化且“全部”数据将丢失。

## 更改保密区

**警告：** 更改保密区的大小需要格式化存储键，这将导致“所有”受保护的与未受保护的数据丢失。

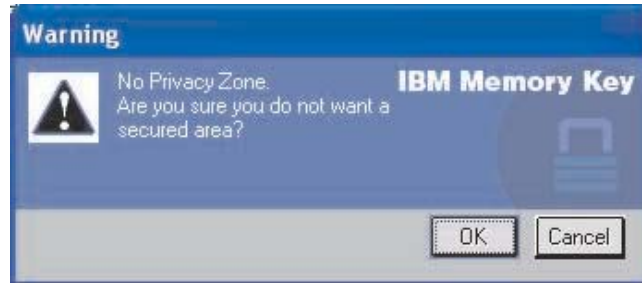
要更改保密区，请如下继续执行：

1. 单击 KeySafe Settings 窗口中的 **Format**。此操作打开 Format Options 窗口。
2. 输入密码并再次输入进行确认。
3. 输入提示以防您忘记密码。

4. 用滑动条设置保密区的大小。
5. 单击 **OK**。

如果要禁用保密区，并将整个存储键空间用作公共区，请如下继续执行：

1. 按照以上的步骤 1 到步骤 3 执行操作。
2. 用滑动条将保密区的大小设置为 0%。
3. 单击 **OK** 确认此操作。



---

## 常见问题解答 (FAQ)

问：如何检查我所使用的 KeySafe 的版本？

答：最简单的方法就是右键单击存储键上的 KeySafe 图标，然后单击 Properties and Version。

问：如何将 KeySafe 升级到最新版本？

答：将压缩文件从 Web ([www.pc.ibm.com/support](http://www.pc.ibm.com/support)) 下载到桌面；在 128 MB USB 2.0 High Speed Memory Key 下搜索。解压缩此文件并将 exe 文件复制到存储键。双击 KeySafe 以从存储键启动它。请勿使用您在桌面或快速启动栏上创建的快捷方式，因为这将启动原有版本。

问：我能只更改 KeySafe 密码而不格式化保密区吗？

答：可以，在 KeySafe Settings 窗口中使用 Change Password 按钮。请注意，当不使用 Change Password 按钮更改密码时，存储键将被格式化并且“所有”的数据将丢失。

问：我想要保护存储键上的所有数据。为什么我被限制为 90% 的“最大保密区”？

答：存储键需要空间运行 KeySafe 以及存储有关存储键的信息。存储键 10% 的空间保持空闲以用于更新和今后的应用程序而不必干扰到 KeySafe 操作。

问：如何知道我在保密区还是公共区工作？

答：如果在 Windows 2000 中工作，则当您处于保密区时，显示 KeySafe 图标时中间有个红色的锁。如果在 Windows 2000 或 XP 中工作，则当您处于保密区时，根文件夹或存储键图标中的背景色是蓝色。（如果您在计算机上选择了传统视图，则无法看到此视觉指示。）

问：如何在公共区和保密区中切换？

答：从桌面、存储键或快速启动栏启动 KeySafe。如果您看到提示要求提供密码，则这意味着您当前处于公共区。要切换到保密区，请输入密码并单击 OK。如果看到带有提示的弹出式窗口询问您从保密区注销的确认，则这意味着您正在保密区工作。要进行切换，请单击 OK。要保持登录在保密区，单击 Cancel。

问：我从存储键意外删除了 KeySafe。我如何访问保密区中的数据？

答：从随存储键一起提供的 CD 上复制 KeySafe.exe 或转至 <http://www.pc.ibm.com>；在 128 MB USB 2.0 High Speed Memory Key 下搜索并下载此 exe 文件。这样就可以访问您先前指定的保密区。

问：我可以在计算机上将 KeySafe 与多个存储键一起使用吗？

答：可以。所有 IBM 64 MB、128 MB 和 256 MB 存储键都支持安装在操作系统上的 KeySafe 应用程序。

问：我能同时将多个存储键和 Keysafe 一起使用吗？

答：不可以。

问：如果 KeySafe 格式化失败的话，还有其它方法格式化存储键上的公共区和保密区吗？

答：有。使用 OS 格式化实用程序。然后复制 KeySafe，这样您就可以使用它了。





---

## 第 5 章 KeySafe 和 MyKey 在非管理员方式下

本章提供有关在非管理员方式下使用 KeySafe 和 MyKey 的信息。

---

### 系统要求

- Pentium II 266 MHz
- 64 MB RAM
- 900KB 可用空间
- 操作系统：Windows 2000 和 Windows XP

---

### 安装说明

请按照以下步骤安装该服务，

1. 作为管理员登录。
2. 将文件 SERVICE FOR NON-ADMIN.ZIP（位于随存储键一起提供的 CD 上）解压缩到一个所有用户都能访问的目录下（例如，C:\DiskOnKey service、C:\Program files 和 C:\winnt\system32）。请勿使用可能对不同用户存在限制的文件夹，例如“桌面”目录或“我的文档”目录。
3. 启动安装 SERVICE.BAT 文件来安装该服务。

注：只有管理员才可以安装服务。

4. 为了检查该服务是否安装正确，请转至设置 → 控制面板 → 管理工具 → 服务并查找 hdlSrv 服务。

一旦安装了该服务，KeySafe 和 MyKey 应用程序在管理员和非管理员权限下都可以运行。

---

### 卸载服务

请按照以下步骤卸载该服务。

- 作为管理员登录。
- 启动文件 UNINSTALL SERVICE.BAT（位于随存储键一起提供的 CD 上）来卸载该服务。



---

## 第 6 章 使用 IBM 存储键引导实用程序

IBM 存储键引导实用程序使您能够将存储键转化为可引导磁盘。在使用此应用程序并将存储键转化为可引导磁盘后，您将能够从存储键引导 IBM 计算机。

---

### 系统设置要求

- 支持可引导 USB 设备的 BIOS。如果不确定 BIOS 是否支持可引导 USB 设备，请联系计算机制造商。如果需要，则可能存在可用的更新。
- 随计算机或 BIOS 更新一起提供的 BIOS 文档（如果适用）。

有关支持引导 USB 存储设备的 IBM 计算机的更多信息，请访问 <http://www.ibm.com/pc/support> 并搜索 128 MB USB 2.0 High Speed Memory Key。

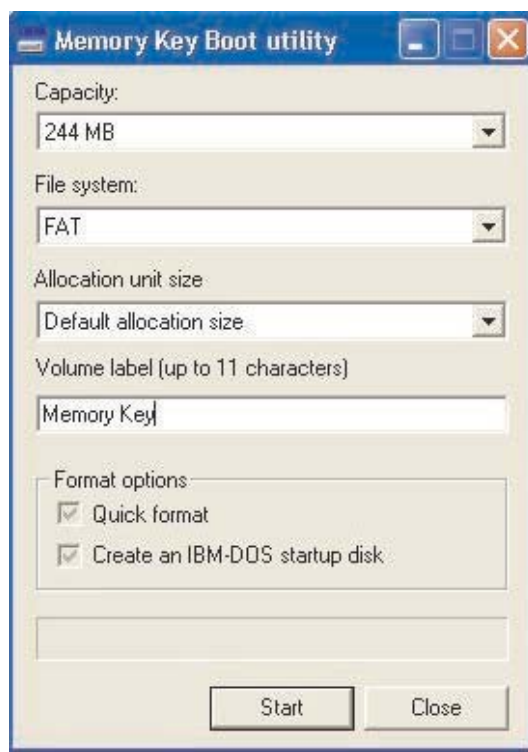
- Pentium II 266 MHz
- 1.5 MB 可用磁盘空间（在驱动器 C 上）。
- 操作系统：Windows 2000 或 Windows XP

---

### 创建 IBM 引导存储键

要创建引导存储键，请执行以下操作：

1. 双击 CD 上的 **Boot Application** 图标。应用程序窗口打开。



2. 插入存储键。磁盘属性（例如容量或文件系统）在应用程序窗口的相应字段中显示。

3. 要创建卷标，请在 Volume 字段输入卷标名称（最多 11 个字符）。
4. 要创建引导盘，请单击 **Start**。显示一条警告消息，通知您将删除所有文件。要继续，请单击 **OK**。要取消格式化过程，请单击 **Cancel**。
5. 单击 **Start** 后，显示一个进度条，表明格式化过程的状态。格式化完成之后，显示一条消息，表明格式化过程成功。
6. 要不创建引导盘就退出该程序，请单击 **Cancel**。

注：

- a. 创建引导盘需要格式化存储键。这将删除存储键上的所有文件。
- b. 如果开始了格式化过程，则在它结束前您将无法终止它。
- c. 在格式化时，请勿卸下存储键，并确保关闭了所有可能使用存储键的应用程序。

---

## 用 IBM 存储键引导计算机

要用 IBM 存储键引导计算机，请执行以下操作：

1. 关闭系统。将引导存储键插入任何可用的 USB 插槽
2. 打开系统并使用台式机或移动式计算机文档中描述的步骤来访问 BIOS 设置。在台式机或移动式计算机上找到决定磁盘的引导或启动顺序的部分。
3. 将该顺序更改为以下顺序：
  - 传统软盘驱动器（可能不适用，这取决于台式机或移动式计算机的配置）
  - ATAPI CD-ROM 驱动器或光盘驱动器
  - 硬盘驱动器 - USB 存储键
  - 硬盘驱动器 - 主硬盘驱动器或装有操作系统或数据文件的驱动器
4. 保存设置更改并退出 BIOS。
5. 重新启动计算机。应使用存储键引导至 DOS 提示符。

---

## 故障诊断

- 在具有保密区的存储键上创建引导盘：如果您先前已经在存储键上（使用 KeySafe 应用程序）创建了保密区，则在运行引导应用程序之前，您将需要删除此保密区。删除此保密区的方法就是运行 KeySafe 并将保密区大小设置为“0”。有关更多信息，请参考 CD 上的 KeySafe 手册。
- 在启用了写保护的存储键上创建引导盘：如果您先前将存储键设置为写保护（使用 MyKey 应用程序），则在运行引导应用程序之前，您将需要禁用此功能。有关更多信息，请参考 CD 上的 MyKey 手册。
- 同时使用多个存储键：如果插入了多个存储键，则将提示您卸下这些存储键，只插入您要用作引导盘的存储键。

---

## 附录 A. Service and Support

The following information describes the technical support that is available for your product, during the warranty period or throughout the life of the product. Refer to your IBM Statement of Limited Warranty for a full explanation of IBM warranty terms.

---

### Online technical support

Online technical support is available during the life of your product through the Personal Computing Support Web site at <http://www.ibm.com/pc/support> .

During the warranty period, assistance for replacement or exchange of defective components is available. In addition, if your IBM option is installed in an IBM computer, you might be entitled to service at your location. Your technical support representative can help you determine the best alternative.

---

### Telephone technical support

Installation and configuration support through the IBM Support Center will be withdrawn or made available for a fee, at IBM's discretion, 90 days after the option has been withdrawn from marketing. Additional support offerings, including step-by-step installation assistance, are available for a nominal fee.

To assist the technical support representative, have available as much of the following information as possible:

- Option name
- Option number
- Proof of purchase
- Computer manufacturer, model, serial number (if IBM), and manual
- Exact wording of the error message (if any)
- Description of the problem
- Hardware and software configuration information for your system

If possible, be at your computer. Your technical support representative might want to walk you through the problem during the call.

For the support telephone number and support hours by country, refer to the following table. If the number for your country or region is not listed, contact your IBM reseller or IBM marketing representative. Response time may vary depending on the number and nature of the calls received.

Phone numbers are subject to change without notice. For the latest phone number list, go to <http://www.ibm.com/pc/support> and click **Support Phone List**.

Country or Region	Telephone Number	Country or Region	Telephone Number
Argentina	0800-666-0011	Malaysia	03-7727-7800
Australia	1300-130-426	Mexico	001-866-434-2080
Austria	01-24592-5901	Netherlands	020-514-5770
Belgium	Dutch 02-210-9820 French 02-210-9800	New Zealand	0800-446-149
Bolivia	0800-0189	Norway	66 81 11 00
Brazil	55-11-3889-8986	Peru	0-800-50-866
Canada	1-800-565-3344 Toronto 416-383-3344	Philippines	632-995-2225
Chile	800-224-488	Portugal	21-791 51 47
China (PRC)	800-810-1818	Russia	095-940-2000
China (Hong Kong S.A.R.)	852-2825-7799	Singapore	1800-840-9911
Columbia	980-912-3021	Spain	91-662 49 16
Denmark	45 20 82 00	Sweden	08-477 4420
Ecuador	1-800-426911 (option #4)	Switzerland	058-333-09-00
Finland	09-459 69 60	Taiwan	886-2-2725-9799
France	02 38 55 74 50	Thailand	66-2-273-4000
Germany	07032-1549 201	Turkey	00-800-446-32-041
Indonesia	021-523-8535	United Kingdom	0-1475-555 055
Ireland	01-815-9202	United States	1-800-426-7378
Italy	02-7031-6101	Uruguay	000-411-005-6649
Japan	Consumer customers 0120-887-870  Business customers 0120-887-874	Venezuela	0-800-100-2011
Luxembourg	298-977 5063	Vietnam	848-8295-160

---

## 附录 B. IBM Statement of Limited Warranty - Z125-4753-07 - 11/2002

### Part 1 - General Terms

*This Statement of Limited Warranty includes Part 1 - General Terms, Part 2 - Country-unique Terms, and Part 3 - Warranty Information. The terms of Part 2 replace or modify those of Part 1. The warranties provided by IBM in this Statement of Limited Warranty apply only to Machines you purchase for your use, and not for resale. The term "Machine" means an IBM machine, its features, conversions, upgrades, elements, or accessories, or any combination of them. The term "Machine" does not include any software programs, whether pre-loaded with the Machine, installed subsequently or otherwise. **Nothing in this Statement of Limited Warranty affects any statutory rights of consumers that cannot be waived or limited by contract.***

### What this Warranty Covers

IBM warrants that each Machine 1) is free from defects in materials and workmanship and 2) conforms to IBM's Official Published Specifications ("Specifications") which are available on request. The warranty period for the Machine starts on the original Date of Installation and is specified in Part 3 - Warranty Information. The date on your invoice or sales receipt is the Date of Installation unless IBM or your reseller informs you otherwise. Many features, conversions, or upgrades involve the removal of parts and their return to IBM. A part that replaces a removed part will assume the warranty service status of the removed part. Unless IBM specifies otherwise, these warranties apply only in the country or region in which you purchased the Machine.

**THESE WARRANTIES ARE YOUR EXCLUSIVE WARRANTIES AND REPLACE ALL OTHER WARRANTIES OR CONDITIONS, EXPRESS OR IMPLIED, INCLUDING, BUT NOT LIMITED TO, THE IMPLIED WARRANTIES OR CONDITIONS OF MERCHANTABILITY AND FITNESS FOR A PARTICULAR PURPOSE. SOME STATES OR JURISDICTIONS DO NOT ALLOW THE EXCLUSION OF EXPRESS OR IMPLIED WARRANTIES, SO THE ABOVE EXCLUSION MAY NOT APPLY TO YOU. IN THAT EVENT, SUCH WARRANTIES ARE LIMITED IN DURATION TO THE WARRANTY PERIOD. NO WARRANTIES APPLY AFTER THAT PERIOD. SOME STATES OR JURISDICTIONS DO NOT ALLOW LIMITATIONS ON HOW LONG AN IMPLIED WARRANTY LASTS, SO THE ABOVE LIMITATION MAY NOT APPLY TO YOU.**

### What this Warranty Does not Cover

This warranty does not cover the following:

- any software programs, whether pre-loaded or shipped with the Machine, or installed subsequently;

- failure resulting from misuse (including but not limited to use of any Machine capacity or capability, other than that authorized by IBM in writing), accident, modification, unsuitable physical or operating environment, or improper maintenance by you;
- failure caused by a product for which IBM is not responsible; and
- any non-IBM products, including those that IBM may procure and provide with or integrate into an IBM Machine at your request.

The warranty is voided by removal or alteration of identification labels on the Machine or its parts.

IBM does not warrant uninterrupted or error-free operation of a Machine.

Any technical or other support provided for a Machine under warranty, such as assistance via telephone with "how-to" questions and those regarding Machine set-up and installation, is provided **WITHOUT WARRANTIES OF ANY KIND**.

### **How to Obtain Warranty Service**

If the Machine does not function as warranted during the warranty period, contact IBM or your reseller to obtain warranty service. If you do not register the Machine with IBM, you may be required to present proof of purchase as evidence of your entitlement to warranty service.

### **What IBM Will Do to Correct Problems**

When you call for service, you must follow the problem determination and resolution procedures that IBM specifies. A technician will attempt to make an initial diagnosis of your problem and help you resolve it over the telephone.

The type of warranty service applicable to your Machine is specified in Part 3 - Warranty Information.

You are responsible for downloading and installing designated Machine Code (microcode, basic input/output system code (called "BIOS"), utility programs, device drivers, and diagnostics delivered with an IBM Machine ) and other software updates from an IBM Internet Web site or from other electronic media, and following the instructions that IBM provides.

If your problem can be resolved with a Customer Replaceable Unit ("CRU") (e.g., keyboard, mouse, speaker, memory, hard disk drive and other easily replaceable parts), IBM will ship these parts to you for replacement by you.

If the Machine does not function as warranted during the warranty period and your problem cannot be resolved over the telephone, through your application of Machine Code or software updates, or with a CRU, IBM or your reseller, if approved by IBM to provide warranty service, will either, at its discretion, 1) repair it to make it function as warranted, or 2) replace it with one that is at least functionally equivalent. If IBM is unable to do either, you may return the Machine to your place of purchase and your money will be refunded.

IBM or your reseller will also manage and install selected engineering changes that apply to the Machine.



### **Exchange of a Machine or Part**

When the warranty service involves the exchange of a Machine or part, the item IBM or your reseller replaces becomes its property and the replacement becomes yours. You represent that all removed items are genuine and unaltered. The replacement may not be new, but will be in good working order and at least functionally equivalent to the item replaced. The replacement assumes the warranty service status of the replaced item.

### **Your Additional Responsibilities**

Before IBM or your reseller exchanges a Machine or part, you agree to remove all features, parts, options, alterations, and attachments not under warranty service.

You also agree to:

1. ensure that the Machine is free of any legal obligations or restrictions that prevent its exchange;
2. obtain authorization from the owner to have IBM or your reseller service a Machine that you do not own; and
3. where applicable, before service is provided:
  - a. follow the service request procedures that IBM or your reseller provides;
  - b. backup or secure all programs, data, and funds contained in the Machine;
  - c. IBM or your reseller with sufficient, free, and safe access to your facilities to permit IBM to fulfill its obligations; and
  - d. inform IBM or your reseller of changes in the Machine's location.
4. (a) ensure all information about identified or identifiable individuals (Personal Data) is deleted from the Machine (to the extent technically possible), (b) allow IBM, your reseller or an IBM supplier to process on your behalf any remaining Personal Data as IBM or your reseller considers necessary to fulfill its obligations under this Statement of Limited Warranty (which may include shipping the Machine for such processing to other IBM service locations around the world), and (c) ensure that such processing complies with any laws applicable to such Personal Data.

### **Limitation of Liability**

IBM is responsible for loss of, or damage to, your Machine only while it is 1) in IBM's possession or 2) in transit in those cases where IBM is responsible for the transportation charges.

Neither IBM nor your reseller are responsible for any of your confidential, proprietary or personal information contained in a Machine which you return to IBM for any reason. You should remove all such information from the Machine prior to its return.

Circumstances may arise where, because of a default on IBM's part or other liability, you are entitled to recover damages from IBM. In each such instance, regardless of the basis on which you are entitled to claim damages from IBM (including fundamental breach, negligence, misrepresentation, or other contract or tort claim), except for any liability that cannot be waived or limited by applicable laws, IBM is liable for no more than

1. damages for bodily injury (including death) and damage to real property and tangible personal property; and
2. the amount of any other actual direct damages, up to the charges (if recurring, 12 months' charges apply) for the Machine that is subject of the claim. For purposes of this item, the term "Machine" includes Machine Code and Licensed Internal Code ("LIC").

This limit also applies to IBM's suppliers and your reseller. It is the maximum for which IBM, its suppliers, and your reseller are collectively responsible.

**UNDER NO CIRCUMSTANCES IS IBM, ITS SUPPLIERS OR RESELLERS LIABLE FOR ANY OF THE FOLLOWING EVEN IF INFORMED OF THEIR POSSIBILITY: 1) THIRD PARTY CLAIMS AGAINST YOU FOR DAMAGES (OTHER THAN THOSE UNDER THE FIRST ITEM LISTED ABOVE); 2) LOSS OF, OR DAMAGE TO, DATA; 3) SPECIAL, INCIDENTAL, OR INDIRECT DAMAGES OR FOR ANY ECONOMIC CONSEQUENTIAL DAMAGES; OR 4) LOST PROFITS, BUSINESS REVENUE, GOODWILL OR ANTICIPATED SAVINGS. SOME STATES OR JURISDICTIONS DO NOT ALLOW THE EXCLUSION OR LIMITATION OF INCIDENTAL OR CONSEQUENTIAL DAMAGES, SO THE ABOVE LIMITATION OR EXCLUSION MAY NOT APPLY TO YOU. SOME STATES OR JURISDICTIONS DO NOT ALLOW LIMITATIONS ON HOW LONG AN IMPLIED WARRANTY LASTS, SO THE ABOVE LIMITATION MAY NOT APPLY TO YOU.**

#### **Governing Law**

Both you and IBM consent to the application of the laws of the country in which you acquired the Machine to govern, interpret, and enforce all of your and IBM's rights, duties, and obligations arising from, or relating in any manner to, the subject matter of this Statement of Limited Warranty, without regard to conflict of law principles.

**THESE WARRANTIES GIVE YOU SPECIFIC LEGAL RIGHTS AND YOU MAY ALSO HAVE OTHER RIGHTS WHICH VARY FROM STATE TO STATE OR JURISDICTION TO JURISDICTION.**

#### **Jurisdiction**

All of our rights, duties, and obligations are subject to the courts of the country in which you acquired the Machine.

---

## **Part 2 - Country-unique Terms**

### **AMERICAS**

#### **ARGENTINA**

**Governing Law:** *The following is added after the first sentence:*

Any litigation arising from this Statement of Limited Warranty will be settled exclusively by the Ordinary Commercial Court of the city of Buenos Aires.

#### **BRAZIL**

**Governing Law:** *The following is added after the first sentence:*

Any litigation arising from this Statement of Limited Warranty will be settled exclusively by the court of Rio de Janeiro, RJ.

## **Peru**

**Limitation of Liability:** *The following is added at the end of this section:*

In accordance with Article 1328 of the Peruvian Civil Code the limitations and exclusions specified in this section will not apply to damages caused by IBM's willful misconduct ("dolo") or gross negligence ("culpa inexcusable").

## **NORTH AMERICA**

**How to Obtain Warranty Service:** *The following is added to this Section:*

To obtain warranty service from IBM in Canada or the United States, call 1-800-IBM-SERV (426-7378).

## **CANADA**

**Limitation of Liability:** *The following replaces item 1 of this section:*

1. damages for bodily injury (including death) or physical harm to real property and tangible personal property caused by IBM's negligence; and

**Governing Law:** *The following replaces ¶laws of the country in which you acquired the Machine in the first sentence:*

laws in the Province of Ontario.

## **UNITED STATES**

**Governing Law:** *The following replaces ¶laws of the country in which you acquired the Machine in the first sentence:*

laws of the State of New York.

## **ASIA PACIFIC**

### **AUSTRALIA**

**What this Warranty Covers:** *The following paragraph is added to this Section:*

The warranties specified in this Section are in addition to any rights you may have under the Trade Practices Act 1974 or other similar legislation and are only limited to the extent permitted by the applicable legislation.

**Limitation of Liability:** *The following is added to this Section:*

Where IBM is in breach of a condition or warranty implied by the Trade Practices Act 1974 or other similar legislation, IBM's liability is limited to the repair or replacement of the goods or the supply of equivalent goods. Where that condition or warranty relates to right to sell, quiet possession or clear title, or the goods are of a kind ordinarily acquired for personal, domestic or household use or consumption, then none of the limitations in this paragraph apply.

**Governing Law:** *The following replaces ¶laws of the country in which you acquired the Machine in the first sentence:*  
laws of the State or Territory.

### **CAMBODIA, LAOS, AND VIETNAM**

**Governing Law:** *The following replaces ¶laws of the country in which you acquired the Machine in the first sentence:*  
laws of the State of New York, United States of America.

### **CAMBODIA, INDONESIA, LAOS, AND VIETNAM**

*Arbitration: The following is added under this heading:*

Disputes arising out of or in connection with this Statement of Limited Warranty shall be finally settled by arbitration which shall be held in Singapore in accordance with the Arbitration Rules of Singapore International Arbitration Center ("SIAC Rules") then in effect. The arbitration award shall be final and binding for the parties without appeal and shall be in writing and set forth the findings of fact and the conclusions of law.

The number of arbitrators shall be three, with each side to the dispute being entitled to appoint one arbitrator. The two arbitrators appointed by the parties shall appoint a third arbitrator who shall act as chairman of the proceedings. Vacancies in the post of chairman shall be filled by the president of the SIAC. Other vacancies shall be filled by the respective nominating party. Proceedings shall continue from the stage they were at when the vacancy occurred.

If one of the parties refuses or otherwise fails to appoint an arbitrator within 30 days of the date the other party appoints its, the first appointed arbitrator shall be the sole arbitrator, provided that the arbitrator was validly and properly appointed.

All proceedings shall be conducted, including all documents presented in such proceedings, in the English language. The English language version of this Statement of Limited Warranty prevails over any other language version.

### **HONG KONG S.A.R. OF CHINA AND MACAU S.A.R. OF CHINA**

**Governing Law:** *The following replaces ¶laws of the country in which you acquired the Machine in the first sentence:*  
laws of Hong Kong Special Administrative Region of China.

### **INDIA**

**Limitation of Liability:** *The following replaces items 1 and 2 of this Section:*

1. liability for bodily injury (including death) or damage to real property and tangible personal property will be limited to that caused by IBM's negligence; and
2. as to any other actual damage arising in any situation involving nonperformance by IBM pursuant to, or in any way related to the subject of this Statement of Limited Warranty, , the charge paid by you for the individual Machine that is the subject of the claim. For purposes of this item, the term "Machine" includes Machine Code and Licensed Internal Code ("LIC").

**Arbitration:** *The following is added under this heading :*

Disputes arising out of or in connection with this Statement of Limited Warranty shall be finally settled by arbitration which shall be held in Bangalore, India in accordance with the laws of India then in effect. The arbitration award shall be final and binding for the parties without appeal and shall be in writing and set forth the findings of fact and the conclusions of law.

The number of arbitrators shall be three, with each side to the dispute being entitled to appoint one arbitrator. The two arbitrators appointed by the parties shall appoint a third arbitrator who shall act as chairman of the proceedings. Vacancies in the post of chairman shall be filled by the president of the Bar Council of India. Other vacancies shall be filled by the respective nominating party. Proceedings shall continue from the stage they were at when the vacancy occurred.

If one of the parties refuses or otherwise fails to appoint an arbitrator within 30 days of the date the other party appoints its, the first appointed arbitrator shall be the sole arbitrator, provided that the arbitrator was validly and properly appointed.

All proceedings shall be conducted, including all documents presented in such proceedings, in the English language. The English language version of this Statement of Limited Warranty prevails over any other language version.

## **JAPAN**

**Governing Law:** *The following sentence is added to this section:*

Any doubts concerning this Statement of Limited Warranty will be initially resolved between us in good faith and in accordance with the principle of mutual trust.

## **MALAYSIA**

**Limitation of Liability:** *The word "SPECIAL" in item 3 of the fifth paragraph is deleted.*

## **NEW ZEALAND**

**What this Warranty Covers:** *The following paragraph is added to this section:*

The warranties specified in this section are in addition to any rights you may have under the Consumer Guarantees Act 1993 or other legislation which cannot be excluded or limited. The Consumer Guarantees Act 1993 will not apply in respect of any goods which IBM provides, if you require the goods for the purposes of a business as defined in that Act.

**Limitation of Liability:** *The following is added to this section:*

Where Machines are not acquired for the purposes of a business as defined in the Consumer Guarantees Act 1993, the limitations in this section are subject to the limitations in that Act.

## **PEOPLE'S REPUBLIC OF CHINA (PRC)**

**Governing Law:** *The following replaces "laws of the country in which you acquired the Machine" in the first sentence:*

laws of the State of New York, United States of America (except when local law requires otherwise).

## **PHILIPPINES**

**Limitation of Liability:** *Item 3 in the fifth paragraph is replaced by the following:*

**SPECIAL (INCLUDING NOMINAL AND EXEMPLARY DAMAGES), MORAL, INCIDENTAL, OR INDIRECT DAMAGES FOR ANY ECONOMIC CONSEQUENTIAL DAMAGES; OR**

**Arbitration:** The following is added under this heading

Disputes arising out of or in connection with this Statement of Limited Warranty shall be finally settled by arbitration which shall be held in Metro Manila, Philippines in accordance with the laws of the Philippines then in effect. The arbitration award shall be final and binding for the parties without appeal and shall be in writing and set forth the findings of fact and the conclusions of law.

The number of arbitrators shall be three, with each side to the dispute being entitled to appoint one arbitrator. The two arbitrators appointed by the parties shall appoint a third arbitrator who shall act as chairman of the proceedings. Vacancies in the post of chairman shall be filled by the president of the Philippine Dispute Resolution Center, Inc.. Other vacancies shall be filled by the respective nominating party. Proceedings shall continue from the stage they were at when the vacancy occurred.

If one of the parties refuses or otherwise fails to appoint an arbitrator within 30 days of the date the other party appoints its, the first appointed arbitrator shall be the sole arbitrator, provided that the arbitrator was validly and properly appointed.

All proceedings shall be conducted, including all documents presented in such proceedings, in the English language. The English language version of this Statement of Limited Warranty prevails over any other language version.

## **SINGAPORE**

**Limitation of Liability:** The words "**SPECIAL**" and "**ECONOMIC**" in item 3 in the fifth paragraph are deleted.

## **EUROPE, MIDDLE EAST, AFRICA (EMEA)**

### ***THE FOLLOWING TERMS APPLY TO ALL EMEA COUNTRIES:***

The terms of this Statement of Limited Warranty apply to Machines purchased from IBM or an IBM reseller.

**How to Obtain Warranty Service:** If you purchase a Machine in Austria, Belgium, Cyprus, Denmark, Estonia, Finland, France, Germany, Greece, Iceland, Ireland, Italy, Latvia, Liechtenstein, Lithuania, Luxembourg, Monaco, Netherlands, Norway, Portugal, Spain, San Marino, Sweden, Switzerland, United Kingdom or Vatican State, you may obtain warranty service for that Machine in any of those countries from either (1) an IBM reseller approved to perform warranty service or (2) from IBM, provided the Machine has been announced and made available by IBM in the country in which you wish to obtain service. If you

purchased a Personal Computer Machine in Albania, Armenia, Belarus, Bosnia and Herzegovina, Bulgaria, Croatia, Czech Republic, Georgia, Hungary, Kazakhstan, Kyrgyzstan, Federal Republic of Yugoslavia, Former Yugoslav Republic of Macedonia (FYROM), Moldova, Poland, Romania, Russia, Slovak Republic, Slovenia, or Ukraine, you may obtain warranty service for that Machine in any of those countries from either (1) an IBM reseller approved to perform warranty service or (2) from IBM.

If you purchase a Machine in a Middle Eastern or African country, you may obtain warranty service for that Machine from the IBM entity within the country of purchase, if that IBM entity provides warranty service in that country, or from an IBM reseller, approved by IBM to perform warranty service on that Machine in that country. Warranty service in Africa is available within 50 kilometers of an IBM approved service provider. You are responsible for transportation costs for Machines located outside 50 kilometers of an IBM approved service provider.

*Add the following paragraph in **Western Europe** (Austria, Belgium, Cyprus, Denmark, Finland, France, Germany, Greece, Iceland, Ireland, Italy, Liechtenstein, Luxembourg, Monaco, Netherlands, Norway, Portugal, Spain, San Marino, Sweden, Switzerland, United Kingdom, Vatican State):*

The warranty for Machines acquired in Western Europe shall be valid and applicable in all Western Europe countries provided the Machines have been announced and made available in such countries.

#### **Governing Law:**

*The phrase "the laws of the country in which you acquired the Machine" is replaced by:*

1) "the laws of Austria" in **Albania, Armenia, Azerbaijan, Belarus, Bosnia-Herzegovina, Bulgaria, Croatia, Georgia, Hungary, Kazakhstan, Kyrgyzstan, FYR Macedonia, Moldova, Poland, Romania, Russia, Slovakia, Slovenia, Tajikistan, Turkmenistan, Ukraine, Uzbekistan, and FR Yugoslavia;** 2) "the laws of France" in **Algeria, Benin, Burkina Faso, Cameroon, Cape Verde, Central African Republic, Chad, Comoros, Congo Republic, Djibouti, Democratic Republic of Congo, Equatorial Guinea, French Guiana, French Polynesia, Gabon, Gambia, Guinea, Guinea-Bissau, Ivory Coast, Lebanon, Madagascar, Mali, Mauritania, Mauritius, Mayotte, Morocco, New Caledonia, Niger, Reunion, Senegal, Seychelles, Togo, Tunisia, Vanuatu, and Wallis & Futuna;** 3) "the laws of Finland" in **Estonia, Latvia, and Lithuania;** 4) "the laws of England" in **Angola, Bahrain, Botswana, Burundi, Egypt, Eritrea, Ethiopia, Ghana, Jordan, Kenya, Kuwait, Liberia, Malawi, Malta, Mozambique, Nigeria, Oman, Pakistan, Qatar, Rwanda, Sao Tome, Saudi Arabia, Sierra Leone, Somalia, Tanzania, Uganda, United Arab Emirates, the United Kingdom, West Bank/Gaza, Yemen, Zambia, and Zimbabwe;** and 5) "the laws of South Africa" in **South Africa, Namibia, Lesotho and Swaziland.**

**Jurisdiction:** *The following exceptions are added to this section:*



1) In **Austria** the choice of jurisdiction for all disputes arising out of this Statement of Limited Warranty and relating thereto, including its existence, will be the competent court of law in Vienna, Austria (Inner-City); 2) in **Angola, Bahrain, Botswana, Burundi, Egypt, Eritrea, Ethiopia, Ghana, Jordan, Kenya, Kuwait, Liberia, Malawi, Malta, Mozambique, Nigeria, Oman, Pakistan, Qatar, Rwanda, Sao Tome, Saudi Arabia, Sierra Leone, Somalia, Tanzania, Uganda, United Arab Emirates, West Bank/Gaza, Yemen, Zambia, and Zimbabwe** all disputes arising out of this Statement of Limited Warranty or related to its execution, including summary proceedings, will be submitted to the exclusive jurisdiction of the English courts; 3) in **Belgium and Luxembourg**, all disputes arising out of this Statement of Limited Warranty or related to its interpretation or its execution, the law, and the courts of the capital city, of the country of your registered office and/or commercial site location only are competent; 4) in **France, Algeria, Benin, Burkina Faso, Cameroon, Cape Verde, Central African Republic, Chad, Comoros, Congo Republic, Djibouti, Democratic Republic of Congo, Equatorial Guinea, French Guiana, French Polynesia, Gabon, Gambia, Guinea, Guinea-Bissau, Ivory Coast, Lebanon, Madagascar, Mali, Mauritania, Mauritius, Mayotte, Morocco, New Caledonia, Niger, Reunion, Senegal, Seychelles, Togo, Tunisia, Vanuatu, and Wallis & Futuna** all disputes arising out of this Statement of Limited Warranty or related to its violation or execution, including summary proceedings, will be settled exclusively by the Commercial Court of Paris; 5) in **Russia**, all disputes arising out of or in relation to the interpretation, the violation, the termination, the nullity of the execution of this Statement of Limited Warranty shall be settled by Arbitration Court of Moscow; 6) in **South Africa, Namibia, Lesotho and Swaziland**, both of us agree to submit all disputes relating to this Statement of Limited Warranty to the jurisdiction of the High Court in Johannesburg; 7) in **Turkey** all disputes arising out of or in connection with this Statement of Limited Warranty shall be resolved by the Istanbul Central (Sultanahmet) Courts and Execution Directorates of Istanbul, the Republic of Turkey; 8) in each of the following specified countries, any legal claim arising out of this Statement of Limited Warranty will be brought before, and settled exclusively by, the competent court of a) Athens for **Greece**, b) Tel Aviv-Jaffa for **Israel**, c) Milan for **Italy**, d) Lisbon for **Portugal**, and e) Madrid for **Spain**; and 9) in **the United Kingdom**, both of us agree to submit all disputes relating to this Statement of Limited Warranty to the jurisdiction of the English courts.

**Arbitration:** *The following is added under this heading:*

In **Albania, Armenia, Azerbaijan, Belarus, Bosnia-Herzegovina, Bulgaria, Croatia, Georgia, Hungary, Kazakhstan, Kyrgyzstan, FYR Macedonia, Moldova, Poland, Romania, Russia, Slovakia, Slovenia, Tajikistan, Turkmenistan, Ukraine, Uzbekistan, and FR Yugoslavia** all disputes arising out of this Statement of Limited Warranty or related to its violation, termination or nullity will be finally settled under the Rules of Arbitration and Conciliation of the International Arbitral Center of the Federal Economic Chamber in Vienna (Vienna Rules) by three arbitrators appointed in accordance with these rules. The arbitration will be held in Vienna, Austria, and the official language of the proceedings will be English. The decision of the arbitrators will be final and binding upon both parties. Therefore, pursuant to paragraph 598 (2) of the Austrian Code of Civil Procedure, the parties expressly waive the application of paragraph 595 (1) figure 7 of the Code. IBM may, however, institute proceedings in a competent court in the country of installation.



**In Estonia, Latvia and Lithuania** all disputes arising in connection with this Statement of Limited Warranty will be finally settled in arbitration that will be held in Helsinki, Finland in accordance with the arbitration laws of Finland then in effect. Each party will appoint one arbitrator. The arbitrators will then jointly appoint the chairman. If arbitrators cannot agree on the chairman, then the Central Chamber of Commerce in Helsinki will appoint the chairman.

## **EUROPEAN UNION (EU)**

### ***THE FOLLOWING TERMS APPLY TO ALL EU COUNTRIES:***

Consumers have legal rights under applicable national legislation governing the sale of consumer goods. Such rights are not affected by the warranties provided in this Statement of Limited Warranty.

#### **How to Obtain Warranty Service:** *The following is added to this section:*

To obtain warranty service from IBM in EU countries, see the telephone listing in Part 3 - Warranty Information.

You may contact IBM at the following address:

IBM Warranty & Service Quality Dept.

PO Box 30

Spango Valley

Greenock

Scotland PA 16 OAH

## **AUSTRIA, DENMARK, FINLAND, GREECE, ITALY, NETHERLANDS, PORTUGAL, SPAIN, SWEDEN AND SWITZERLAND**

#### **Limitation of Liability:** *The following replaces the terms of this section in its entirety:*

Except as otherwise provided by mandatory law:

1. IBM's liability for any damages and losses that may arise as a consequence of the fulfillment of its obligations under or in connection with this Statement of Limited Warranty or due to any other cause related to this Statement of Limited Warranty is limited to the compensation of only those damages and losses proved and actually arising as an immediate and direct consequence of the non-fulfillment of such obligations (if IBM is at fault) or of such cause, for a maximum amount equal to the charges you paid for the Machine. For purposes of this item, the term "Machine" includes Machine Code and Licensed Internal Code ("LIC").

The above limitation shall not apply to damages for bodily injuries (including death) and damages to real property and tangible personal property for which IBM is legally liable.

2. **UNDER NO CIRCUMSTANCES IS IBM, ITS SUPPLIERS OR RESELLERS LIABLE FOR ANY OF THE FOLLOWING, EVEN IF INFORMED OF THEIR**

**POSSIBILITY: 1) LOSS OF, OR DAMAGE TO, DATA; 2) INCIDENTAL OR INDIRECT DAMAGES, OR FOR ANY ECONOMIC CONSEQUENTIAL DAMAGES; 3) LOST PROFITS, EVEN IF THEY ARISE AS AN IMMEDIATE CONSEQUENCE OF THE EVENT THAT GENERATED THE DAMAGES; OR 4) LOSS OF BUSINESS, REVENUE, GOODWILL, OR ANTICIPATED SAVINGS.**

## **FRANCE AND BELGIUM**

**Limitation of Liability:** *The following replaces the terms of this section in its entirety:*

Except as otherwise provided by mandatory law:

1. IBM's liability for any damages and losses that may arise as a consequence of the fulfillment of its obligations under or in connection with this Statement of Limited Warranty is limited to the compensation of only those damages and losses proved and actually arising as an immediate and direct consequence of the non-fulfillment of such obligations (if IBM is at fault), for a maximum amount equal to the charges you paid for the Machine that has caused the damages. For purposes of this item, the term "Machine" includes Machine Code and Licensed Internal Code ("LIC").

The above limitation shall not apply to damages for bodily injuries (including death) and damages to real property and tangible personal property for which IBM is legally liable.

2. **UNDER NO CIRCUMSTANCES IS IBM, ITS SUPPLIERS OR RESELLERS LIABLE FOR ANY OF THE FOLLOWING, EVEN IF INFORMED OF THEIR POSSIBILITY: 1) LOSS OF, OR DAMAGE TO, DATA; 2) INCIDENTAL OR INDIRECT DAMAGES, OR FOR ANY ECONOMIC CONSEQUENTIAL DAMAGES; 3) LOST PROFITS, EVEN IF THEY ARISE AS AN IMMEDIATE CONSEQUENCE OF THE EVENT THAT GENERATED THE DAMAGES; OR 4) LOSS OF BUSINESS, REVENUE, GOODWILL, OR ANTICIPATED SAVINGS.**

**THE FOLLOWING TERMS APPLY TO THE COUNTRY SPECIFIED:**

### **AUSTRIA**

**What this Warranty Covers:** *The following replaces the first sentence of the first paragraph of this section:*

The warranty for an IBM Machine covers the functionality of the Machine for its normal use and the Machine's conformity to its Specifications.

*The following paragraphs are added to this Section:*

The minimum warranty period for Machines is 12 months from the date of delivery. . The limitation period for consumers in action for breach of warranty is the statutory period as a minimum. In case IBM or your reseller is unable to repair an IBM Machine, you can alternatively ask for a partial refund as far as justified by the reduced value of the unrepaired Machine or ask for a cancellation of the respective agreement for such Machine and get your money refunded.

*The second paragraph does not apply.*

**What IBM Will Do to Correct Problems:** *The following is added to this section:*

During the warranty period, transportation for delivery of the failing Machine to IBM will be at IBM's expense.

**Limitation of Liability:** *The following paragraph is added to this section:*

The limitations and exclusions specified in the Statement of Limited Warranty will not apply to damages caused by IBM with fraud or gross negligence and for express warranty.

*The following sentence is added to the end of item 2:*

IBM's liability under this item is limited to the violation of essential contractual terms in cases of ordinary negligence.

## **EGYPT**

**Limitation of Liability:** *The following replaces item 2 in this section:*

as to any other actual direct damages, IBM's liability will be limited to the total amount you paid for the Machine that is the subject of the claim. For purposes of this item, the term "Machine" includes Machine Code and Licensed Internal Code (LIC).

*Applicability of suppliers and resellers (unchanged).*

## **FRANCE**

**Limitation of Liability:** *The following replaces the second sentence of the first paragraph of this section:*

In such instances, regardless of the basis on which you are entitled to claim damages from IBM, IBM is liable for no more than: *(items 1 and 2 unchanged).*

## **GERMANY**

**What this Warranty Covers:** *The following replaces the first sentence of the first paragraph of this section:*

The warranty for an IBM Machine covers the functionality of the Machine for its normal use and the Machine's conformity to its Specifications.

*The following paragraphs are added to this section:*

The minimum warranty period for Machines is twelve months. In case IBM or your reseller is unable to repair an IBM Machine, you can alternatively ask for a partial refund as far as justified by the reduced value of the unrepaired Machine or ask for a cancellation of the respective agreement for such Machine and get your money refunded.

*The second paragraph does not apply.*

**What IBM Will Do to Correct Problems:** *The following is added to this section:*

During the warranty period, transportation for delivery of the failing Machine to IBM will be at IBM's expense.

**Limitation of Liability:** *The following paragraph is added to this section:*

The limitations and exclusions specified in the Statement of Limited Warranty will not apply to damages caused by IBM with fraud or gross negligence and for express warranty.

*The following sentence is added to the end of item 2:*

IBM's liability under this item is limited to the violation of essential contractual terms in cases of ordinary negligence.

## **HUNGARY**

**Limitation of Liability:** *The following is added at the end of this section:*

The limitation and exclusion specified herein shall not apply to liability for a breach of contract damaging life, physical well-being, or health that has been caused intentionally, by gross negligence, or by a criminal act.

The parties accept the limitations of liability as valid provisions and state that the Section 314.(2) of the Hungarian Civil Code applies as the acquisition price as well as other advantages arising out of the present Statement of Limited Warranty balance this limitation of liability.

## **IRELAND**

**What this Warranty Covers:** *The following is added to this section:*

Except as expressly provided in these terms and conditions, all statutory conditions, including all warranties implied, but without prejudice to the generality of the foregoing all warranties implied by the Sale of Goods Act 1893 or the Sale of Goods and Supply of Services Act 1980 are hereby excluded.

**Limitation of Liability:** *The following replaces the terms of this section in its entirety:*

For the purposes of this section, a "Default" means any act, statement, omission, or negligence on the part of IBM in connection with, or in relation to, the subject matter of this Statement of Limited Warranty in respect of which IBM is legally liable to you, whether in contract or tort. A number of Defaults which together result in, or contribute to, substantially the same loss or damage will be treated as one Default occurring on the date of occurrence of the last such Default.

Circumstances may arise where, because of a Default, you are entitled to recover damages from IBM.

This section sets out the extent of IBM's liability and your sole remedy.

1. IBM will accept unlimited liability for death or personal injury caused by the negligence of IBM.
2. Subject always to the Items for Which IBM is Not Liable below, IBM will accept unlimited liability for physical damage to your tangible property resulting from the negligence of IBM.
3. Except as provided in items 1 and 2 above, IBM's entire liability for actual damages for any one Default will not in any event exceed the greater of 1) EUR 125,000, or 2) 125% of the amount you paid for the Machine directly relating to the Default.

## **Items for Which IBM is Not Liable**

Save with respect to any liability referred to in item 1 above, under no circumstances is IBM, its suppliers or resellers liable for any of the following, even if IBM or they were informed of the possibility of such losses:

1. loss of, or damage to, data;
2. special, indirect, or consequential loss; or
3. loss of profits, business, revenue, goodwill, or anticipated savings.

## **SLOVAKIA**

**Limitation of Liability:** *The following is added to the end of the last paragraph:*

The limitations apply to the extent they are not prohibited under §§ 373-386 of the Slovak Commercial Code.

## **SOUTH AFRICA, NAMIBIA, BOTSWANA, LESOTHO AND SWAZILAND**

**Limitation of Liability:** *The following is added to this section:*

IBM's entire liability to you for actual damages arising in all situations involving nonperformance by IBM in respect of the subject matter of this Statement of Warranty will be limited to the charge paid by you for the individual Machine that is the subject of your claim from IBM.

## **UNITED KINGDOM**

**Limitation of Liability:** *The following replaces the terms of this section in its entirety:*

For the purposes of this section, a "Default" means any act, statement, omission, or negligence on the part of IBM in connection with, or in relation to, the subject matter of this Statement of Limited Warranty in respect of which IBM is legally liable to you, whether in contract or tort. A number of Defaults which together result in, or contribute to, substantially the same loss or damage will be treated as one Default.

Circumstances may arise where, because of a Default, you are entitled to recover damages from IBM.

This section sets out the extent of IBM's liability and your sole remedy.

1. IBM will accept unlimited liability for:
  - a. death or personal injury caused by the negligence of IBM; and
  - b. any breach of its obligations implied by Section 12 of the Sale of Goods Act 1979 or Section 2 of the Supply of Goods and Services Act 1982, or any statutory modification or re-enactment of either such Section.
2. IBM will accept unlimited liability, subject always to the Items for Which IBM is Not Liable below, for physical damage to your tangible property resulting from the negligence of IBM.

3. IBM's entire liability for actual damages for any one Default will not in any event, except as provided in items 1 and 2 above, exceed the greater of 1) Pounds Sterling 75,000, or 2) 125% of the total purchase price payable or the charges for the Machine directly relating to the Default.

These limits also apply to IBM's suppliers and resellers. They state the maximum for which IBM and such suppliers and resellers are collectively responsible.

#### **Items for Which IBM is Not Liable**

Save with respect to any liability referred to in item 1 above, under no circumstances is IBM or any of its suppliers or resellers liable for any of the following, even if IBM or they were informed of the possibility of such losses:

1. loss of, or damage to, data:
2. special, indirect, or consequential loss; or
3. loss of profits, business, revenue, goodwill, or anticipated savings.

---

## **Part 3 - Warranty Information**

This Part 3 provides information regarding the warranty applicable to your Machine, including the warranty period and type of warranty service IBM provides.

#### **Warranty Period**

The warranty period may vary by country or region and is specified in the table below. NOTE: "Region" means either Hong Kong or Macau Special Administrative Region of China.

#### **IBM 128 MB USB 2.0 High Speed Memory Key**

<b>Country or Region of Purchase</b>	<b>Warranty Period</b>	<b>Type of Warranty Service</b>
Worldwide	1 year	1, 4

A warranty period of 1 year on parts and 1 year on labor means that IBM provides warranty service without charge for parts and labor during the 1 year warranty period.

#### **Types of Warranty Service**

If required, IBM provides repair or exchange service depending on the type of warranty service specified for your Machine in the above table and as described below. Warranty service may be provided by your reseller if approved by IBM to perform warranty service. Scheduling of service will depend upon the time of your call and is subject to parts availability. Service levels are response time objectives and are not guaranteed. The specified level of warranty service may not be available in all worldwide locations, additional charges may apply outside IBM's normal service area, contact your local IBM representative or your reseller for country and location specific information.

#### **1. Customer Replaceable Unit ("CRU") Service**

IBM will ship CRU parts to you for your replacement. If IBM instructs you to return the replaced CRU, you are responsible for returning it to IBM in accordance with IBM's instructions. If you do not return the defective CRU, if IBM so instructs, within 30 days of your receipt of the replacement CRU, IBM may charge you for the replacement.

## 2. On-site Service

IBM or your reseller will either repair or exchange the failing Machine at your location and verify its operation. You must provide suitable working area to allow disassembly and reassembly of the IBM Machine. The area must be clean, well lit and suitable for the purpose. **For some Machines, certain repairs may require sending the Machine to an IBM service center.**

## 3. Courier or Depot Service<sup>1</sup>

You will disconnect the failing Machine for collection arranged by IBM. IBM will provide you with a shipping container for you to return your Machine to a designated service center. A courier will pick up your Machine and deliver it to the designated service center. Following its repair or exchange, IBM will arrange the return delivery of the Machine to your location. You are responsible for its installation and verification.

## 4. Customer Carry-In or Mail-In Service

You will deliver or mail as IBM specifies (prepaid unless IBM specifies otherwise) the failing Machine suitably packaged to a location IBM designates. After IBM has repaired or exchanged the Machine, IBM will make it available for your collection or, for Mail-in Service, IBM will return it to you at IBM's expense, unless IBM specifies otherwise. You are responsible for the subsequent installation and verification of the Machine.

The IBM Machine Warranty worldwide web site at [http://www.ibm.com/servers/support/machine\\_warranties/](http://www.ibm.com/servers/support/machine_warranties/) provides a worldwide overview of IBM's Limited Warranty for Machines, a Glossary of IBM definitions, Frequently Asked Questions (FAQs) and Support by Product (Machine) with links to Product Support pages. **The IBM Statement of Limited Warranty is also available on this site in 29 languages.**

To obtain warranty service contact IBM or your IBM reseller. In Canada or the United States, call 1-800-IBM-SERV (426-7378). For other countries, see the telephone numbers below.

Phone numbers are subject to change without notice. For the latest phone number list, go to <http://www.ibm.com/pc/support> and click **Support Phone List**.

Country or Region	Telephone Number	Country or Region	Telephone Number
Argentina	0800-666-0011	Malaysia	03-7727-7800
Australia	1300-130-426	Mexico	001-866-434-2080
Austria	01-24592-5901	Netherlands	020-514-5770

---

1. This type of service is called ThinkPad® EasyServ or EasyServ in some countries.

Country or Region	Telephone Number	Country or Region	Telephone Number
Belgium	Dutch 02-210-9820	New Zealand	0800-446-149
	French 02-210-9800		
Bolivia	0800-0189	Norway	66 81 11 00
Brazil	55-11-3889-8986	Peru	0-800-50-866
Canada	1-800-565-3344	Philippines	632-995-2225
	Toronto 416-383-3344		
Chile	800-224-488	Portugal	21-791 51 47
China (PRC)	800-810-1818	Russia	095-940-2000
China (Hong Kong S.A.R.)	852-2825-7799	Singapore	1800-840-9911
Columbia	980-912-3021	Spain	91-662 49 16
Denmark	45 20 82 00	Sweden	08-477 4420
Ecuador	1-800-426911 (option #4)	Switzerland	058-333-09-00
Finland	09-459 69 60	Taiwan	886-2-2725-9799
France	02 38 55 74 50	Thailand	66-2-273-4000
Germany	07032-1549 201	Turkey	00-800-446-32-041
Indonesia	021-523-8535	United Kingdom	0-1475-555 055
Ireland	01-815-9202	United States	1-800-426-7378
Italy	02-7031-6101	Uruguay	000-411-005-6649
Japan	Consumer customers 0120-887-870	Venezuela	0-800-100-2011
	Business customers 0120-887-874		
Luxembourg	298-977 5063	Vietnam	848-8295-160



---

## 附录 C. Notices

IBM may not offer the products, services, or features discussed in this document in all countries. Consult your local IBM representative for information on the products and services currently available in your area. Any reference to an IBM product, program, or service is not intended to state or imply that only that IBM product, program, or service may be used. Any functionally equivalent product, program, or service that does not infringe any IBM intellectual property right may be used instead. However, it is the user's responsibility to evaluate and verify the operation of any non-IBM product, program, or service.

IBM may have patents or pending patent applications covering subject matter described in this document. The furnishing of this document does not give you any license to these patents. You can send license inquiries, in writing, to:

*IBM Director of Licensing  
IBM Corporation  
North Castle Drive  
Armonk, NY 10504-1785  
U.S.A.*

INTERNATIONAL BUSINESS MACHINES CORPORATION PROVIDES THIS PUBLICATION "AS IS" WITHOUT WARRANTY OF ANY KIND, EITHER EXPRESS OR IMPLIED, INCLUDING, BUT NOT LIMITED TO, THE IMPLIED WARRANTIES OF NON-INFRINGEMENT, MERCHANTABILITY OR FITNESS FOR A PARTICULAR PURPOSE. Some jurisdictions do not allow disclaimer of express or implied warranties in certain transactions, therefore, this statement may not apply to you.

This information could include technical inaccuracies or typographical errors. Changes are periodically made to the information herein; these changes will be incorporated in new editions of the publication. IBM may make improvements and/or changes in the product(s) and/or the program(s) described in this publication at any time without notice.

The products described in this document are not intended for use in implantation or other life support applications where malfunction may result in injury or death to persons. The information contained in this document does not affect or change IBM product specifications or warranties. Nothing in this document shall operate as an express or implied license or indemnity under the intellectual property rights of IBM or third parties. All information contained in this document was obtained in specific environments and is presented as an illustration. The result obtained in other operating environments may vary.

IBM may use or distribute any of the information you supply in any way it believes appropriate without incurring any obligation to you.

Any references in this publication to non-IBM Web sites are provided for convenience only and do not in any manner serve as an endorsement of those Web sites. The materials at those Web sites are not part of the materials for this IBM product, and use of those Web sites is at your own risk.

Any performance data contained herein was determined in a controlled environment. Therefore, the result obtained in other operating environments may vary significantly. Some measurements may have been made on development-level systems and there is no guarantee that these measurements will be the same on generally available systems. Furthermore, some measurements may have been estimated through extrapolation. Actual results may vary. Users of this document should verify the applicable data for their specific environment.

---

## Trademarks

The following terms are trademarks of International Business Machines Corporation in the United States, other countries, or both:

IBM  
IBM logo  
ThinkPad

Microsoft, Windows, and Windows NT are trademarks of Microsoft Corporation in the United States, other countries, or both.

Pentium is a trademark of Intel Corporation in the United States, other countries, or both.

Other company, product, or service names may be trademarks or service marks of others.

---

## Federal Communications Commission (FCC) statement

**Note:** This equipment has been tested and found to comply with the limits for a Class B digital device, pursuant to Part 15 of the FCC Rules. These limits are designed to provide reasonable protection against harmful interference in a residential installation. This equipment generates, uses, and can radiate radio frequency energy and, if not installed and used in accordance with the instructions, may cause harmful interference to radio communications. However, there is no guarantee that interference will not occur in a particular installation. If this equipment does cause harmful interference to radio or television reception, which can be determined by turning the equipment off and on, the user is encouraged to try to correct the interference by one or more of the following measures:

- Reorient or relocate the receiving antenna.
- Increase the separation between the equipment and receiver.
- Connect the equipment into an outlet on a circuit different from that to which the receiver is connected.
- Consult an IBM authorized dealer or service representative for help.

Properly shielded and grounded cables and connectors must be used in order to meet FCC emission limits. Proper cables and connectors are available from IBM authorized dealers. IBM is not responsible for any radio or television interference caused by using other than recommended cables and connectors or by unauthorized changes or modifications to this equipment. Unauthorized changes or modifications could void the user's authority to operate the equipment.

This device complies with Part 15 of the FCC Rules. Operation is subject to the following two conditions: (1) this device may not cause harmful interference, and (2) this device must accept any interference received, including interference that may cause undesired operation.

Responsible party:

International Business Machines Corporation  
New Orchard Road  
Armonk, NY 10504  
Telephone: 1-919-543-2193



Tested To Comply  
With FCC Standards

FOR HOME OR OFFICE USE

### **Industry Canada Class B emission compliance statement**

This Class B digital apparatus complies with Canadian ICES-003.

### **Avis de conformité a la réglementation d'Industrie Canada**

Cet appareil numérique de la classe B est conforme à la norme NMB-003 du Canada.

### **Deutsche EMV-Direktive (electromagnetische Verträglichkeit)**

Zulassungsbeseinigunglaut dem Deutschen Gesetz über die elektromagnetische Verträglichkeit von Geräten (EMVG) vom 30. August 1995 (bzw. der EMC EG Richtlinie 89/336):

Dieses Gerät ist berechtigt in Übereinstimmungmit dem Deutschen EMVG das EG-Konformitätszeichen - CE - zu führen. Verantwortlich für die Konformitätserklärung nach Paragraph 5 des EMVG ist die:

IBM Deutschland Informationssysteme GmbH, 70548 Stuttgart.

Informationen in Hinsicht EMVG Paragraph 3 Abs. (2) 2:

Das Gerät erfüllt die Schutzanforderungen nach EN 55024:1998 und EN 55022:1998 Klasse B.
--

EN 55022 Hinweis:

『Wird dieses Gerät in einer industriellen Umgebung betrieben (wie in EN 55022:B festgelegt), dann kann es dabei eventuell gestört werden. In solch einem FA11 ist der Abstand bzw. die Abschirmungzu der industriellen Störquelle zu vergrößern.』

Anmerkung:

Um die Einhaltung des EMVG sicherzustellen sind die Geräte, wie in den IBM Handbüchern angegeben, zu installieren und zu betreiben.

### **European Union - emission directive**

This product is in conformity with the protection requirements of EU Council Directive 89/336/ECC on the approximation of the laws of the Member States relating to electromagnetic compatibility.

IBM can not accept responsibility for any failure to satisfy the protection requirements resulting from a non-recommended modification of the product, including the fitting of non-IBM option cards.

This product has been tested and found to comply with the limits for Class B Information Technology Equipment according to European Standard EN 55022. The limits for Class B equipment were derived for typical residential environments to provide reasonable protection against interference with licensed communication devices.

### **Union Européenne - Directive Conformité électromagnétique**

Ce produit est conforme aux exigences de protection de la Directive 89/336/EEC du Conseil de l'UE sur le rapprochement des lois des États membres en matière de compatibilité électromagnétique.

IBM ne peut accepter aucune responsabilité pour le manquement aux exigences de protection résultant d'une modification non recommandée du produit, y compris l'installation de cartes autres que les cartes IBM.

Ce produit a été testé et il satisfait les conditions de l'équipement informatique de Classe B en vertu de Standard européen EN 55022. Les conditions pour l'équipement de Classe B ont été définies en fonction d'un contexte résidentiel ordinaire afin de fournir une protection raisonnable contre l'interférence d'appareils de communication autorisés.

### **Unione Europea - Directiva EMC (Conformidad electromagnética)**

Este producto satisface los requisitos de protección del Consejo de la UE, Directiva 89/336/CEE en lo que a la legislatura de los Estados Miembros sobre compatibilidad electromagnética se refiere.

IBM no puede aceptar responsabilidad alguna si este producto deja de satisfacer dichos requisitos de protección como resultado de una modificación no recomendada del producto, incluyendo el ajuste de tarjetas de opción que no sean IBM.

Este producto ha sido probado y satisface los límites para Equipos Informáticos Clase B de conformidad con el Estándar Europeo EN 55022. Los límites para los equipos de Clase B se han establecido para entornos residenciales típicos a fin de proporcionar una protección razonable contra las interferencias con dispositivos de comunicación licenciados.

### **Unione Europea - Normativa EMC**

Questo prodotto è conforme alle normative di protezione ai sensi della Direttiva del Consiglio dell'Unione Europea 89/336/CEE sull'armonizzazione legislativa degli stati membri in materia di compatibilità elettromagnetica.

IBM non accetta responsabilità alcuna per la mancata conformità alle normative di protezione dovuta a modifiche non consigliate al prodotto, compresa l'installazione di schede e componenti di marca diversa da IBM.

Le prove effettuate sul presente prodotto hanno accertato che esso rientra nei limiti stabiliti per le apparecchiature di informatica Classe B ai sensi della Norma Europea EN 55022. I limiti delle apparecchiature della Classe B sono stati stabiliti al fine di fornire ragionevole protezione da interferenze mediante dispositivi di comunicazione in concessione in ambienti residenziali tipici.

이 기기는 가정용으로 전자파 적합등록을 한 기기로서  
주거지역에서는 물론 모든 지역에서 사용할 수 있습니다.

この装置は、情報処理装置等電波障害自主規制協議会（VCCI）の基準に基づきクラスB情報技術装置です。この装置は、家庭環境で使用することを目的としていますが、この装置がラジオやテレビジョン受信機に近接して使用されると、受信障害を引き起こすことがあります。  
取扱説明書に従って正しい取り扱いをして下さい。

**Japanese statement of compliance for products less than or equal to 20 A per phase**

**高調波ガイドライン適合品**



部件号： 22P9237

Printed in China

(1P) P/N: 22P9237

