

IBM® Remote Supervisor Adapter



Installation Guide



IBM[®] Remote Supervisor Adapter



Installation Guide

NOTE

Before using this information and the product it supports, be sure to read the general information in Appendix B, "Product warranties and notices," on page 59.

Third Edition (May 2001)

© Copyright International Business Machines Corporation 2000, 2001. All rights reserved.

US Government Users Restricted Rights – Use, duplication or disclosure restricted by GSA ADP Schedule Contract with IBM Corp.

Safety

Before installing this product, read the Safety Information book.

مج، يجب قراءة دات السلامة

Antes de instalar este produto, leia o Manual de Informações sobre Segurança.

安裝本产品前请先阅读《安全信息》手册。

Před instalací tohoto produktu si přečtěte příručku bezpečnostních instrukcí.

Læs hæftet med sikkerhedsforskrifter, før du installerer dette produkt.

Lue Safety Information -kirjanen, ennen kuin asennat tämän tuotteen.

Avant de procéder à l'installation de ce produit, lisez le manuel Safety Information.

Vor Beginn der Installation die Broschüre mit Sicherheitshinweisen lesen.

Πριν εγκαταστήσετε αυτό το προϊόν, διαβάστε το εγχειρίδιο Safety Information.

Prije instalacije ovog proizvoda pročitajte priručnik sa sigurnosnim uputama.

לפני שתתקינו מוצר זה, קראו את הוראות הבטיחות.

Przed zainstalowaniem tego produktu należy przeczytać broszurę Informacje Dotyczące Bezpieczeństwa.

Prima di installare questo prodotto, leggere l'opuscolo contenente le informazioni sulla sicurezza.

本製品を導入する前に、安全情報資料を御読みください。

이 제품을 설치하기 전에, 안전 정보 책자를 읽어보십시오.

Пред да го инсталирате овој производ прочитајте ја книгата со безбедносни информации.

Lees voordat u dit product installeert eerst het boekje met veiligheidsvoorschriften.

Les heftet om sikkerhetsinformasjon (Safety Information) før du installerer dette produktet.

Antes de instalar este produto, leia o folheto Informações sobre Segurança.

Перед установкой продукта прочтите брошюру по технике безопасности (Safety Information).

Pred inštaláciou tohto produktu si prečítajte Informáciu brožúrku o bezpečosti.

Preden namestite ta izdelek, preberite knjižico Varnostne informacije.

Antes de instalar este producto, lea la Información de Seguridad.

Läs säkerhetsinformationen innan du installerar den här produkten.

在安裝本產品之前，也請先閱讀「安全性資訊」小冊子。

Installálás el tt olvassa el a Biztonsági el írások kézikönyvét !

Statement 1



Danger

Electrical current from power, telephone, and communication cables is hazardous.

To avoid a shock hazard:

- Do not connect or disconnect any cables or perform installation, maintenance, or reconfiguration of this product during an electrical storm.
- Connect all power cords to a properly wired and grounded electrical outlet.
- Connect to properly wired outlets any equipment that will be attached to this product.
- When possible, use one hand only to connect or disconnect signal cables.
- Never turn on any equipment when there is evidence of fire, water, or structural damage.
- Disconnect the attached power cords, telecommunications systems, networks, and modems before you open the device covers, unless instructed otherwise in the installation and configuration procedures.
- Connect and disconnect cables as described in the following table when installing, moving, or opening covers on this product or attached devices.

To connect:

1. Turn everything OFF.
2. First, attach all cables to devices.
3. Attach signal cables to connectors.
4. Attach power cords to outlet.
5. Turn device ON.

To disconnect:

1. Turn everything OFF.
2. First, remove power cords from outlet.
3. Remove signal cables from connectors.
4. Remove all cables from devices.

Statement 2

CAUTION:



When replacing the lithium battery, use only IBM Part Number 33F8354 or an equivalent type battery recommended by the manufacturer. If your system has a module containing a lithium battery, replace it only with the same module type made by the same manufacturer. The battery contains lithium and can explode if not properly used, handled, or disposed of.

Do not:

- Throw or immerse into water.
- Heat to more than 100 C (212 F)
- Repair or disassemble

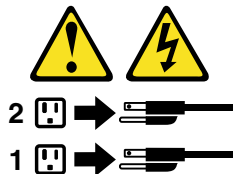
Dispose of the battery as required by local ordinances or regulations.

Statement 5



CAUTION:

The power control button on the device and the power supply do not turn off the electrical current supplied to the device. The device also might have more than one power cord. To remove all electrical current from the device, ensure that all power cords are disconnected from the power source.



Contents

Safety	iii
Chapter 1. Introduction	1
Installation prerequisites	1
Installation requirements	2
Remote Supervisor Adapter features	2
About your documentation	3
System requirements	3
Starting the IBM Documentation Browser	4
Using the IBM Documentation Browser	4
Notices and statements used in this book	5
Handling static-sensitive devices	5
Unpacking and verifying components	6
Inventory checklist	6
Remote Supervisor Adapter components	8
Chapter 2. Installing the adapter in an xSeries 220	11
Installing the Remote Supervisor Adapter	12
Connecting the power-supply adapter	15
Connecting the LAN and serial port cables	16
Cabling the Ethernet LAN port	16
Cabling the serial (COM) port	17
Updating the Remote Supervisor Adapter firmware	17
Configuring your system to enable remote access to the Remote Supervisor Adapter	19
Configuring the Ethernet settings	20
Configuring the serial port	22
Setting up point-to-point protocol	24
Installing the Advanced System Management device drivers	25
Installing Windows 2000 device drivers	26
Using the Hardware Wizard to install the device drivers	26
Manually installing the device drivers	26
Installing Windows NT device drivers	27
Using the non-interactive method	27
Using the interactive method	28
Installing Novell NetWare device drivers	28
Installing SCO UnixWare device drivers	28
Configuring the remote control password	29
Completing the installation	30
Chapter 3. Installing the adapter in an xSeries 330	31
Installing the Remote Supervisor Adapter	31
Connecting the power-supply adapter	34
Connecting the LAN and serial port cables	35
Cabling the Ethernet LAN port	36
Cabling the serial (COM) port	37
Updating the Remote Supervisor Adapter firmware	37
Configuring your system to enable remote access to the Remote Supervisor Adapter	39
Configuring the Ethernet settings	40
Configuring the serial port	42
Setting up point-to-point protocol	43
Installing the Advanced System Management device drivers	45
Completing the installation	45

Chapter 4. Using the ASM interconnect network	47
Planning and cabling your interconnect network	47
Forwarding alerts	48
Cabling for the ASM interconnect network	49
Connecting the ASM Interconnect module to the xSeries 220	49
Connecting the ASM Interconnect module to the xSeries 330	50
ASM interconnect network configuration examples	52
Appendix A. Getting help, service, and information	57
Appendix B. Product warranties and notices	59
Warranty Information	59
Warranty Period	59
IBM Statement of Limited Warranty	59
Part 1 - General Terms	59
Part 2 - Country-unique Terms	61
Notices	67
Edition notice	68
Processing date data	68
Trademarks	68
Important notes	69
Electronic emission notices	69
Federal Communications Commission (FCC) Statement	69
Industry Canada Class A emission compliance statement	69
Australia and New Zealand Class A statement	70
United Kingdom telecommunications safety requirement	70
European Union EMC Directive conformance statement	70
Taiwan electrical emission statement	70
Japanese Voluntary Control Council for Interference (VCCI) statement	70
Power cords	71
Index	73

Chapter 1. Introduction

Thank you for purchasing an IBM® Remote Supervisor Adapter. This manual provides information for installing the Remote Supervisor Adapter in an IBM @server xSeries 220 or in an IBM @server xSeries 330.

This *Installation Guide* provides the information that you need to:

- Install and cable your adapter
- Install device drivers
- Configure your adapter

The IBM Remote Supervisor Adapter comes with a three-year limited warranty. For more information about this warranty, see Appendix B, “Product warranties and notices,” on page 59.

You can access the latest information about product updates on the IBM Support Web site, <http://www.ibm.com/pc/support/>. For service, assistance, or additional information on the World Wide Web, see Appendix A, “Getting help, service, and information,” on page 57.

Installation prerequisites

Before installing the Remote Supervisor Adapter, perform the following tasks:

- Obtain the most recent device drivers, Advanced System Management (ASM) firmware, DOS configuration utility, and management information base (MIB) from the IBM Support Web site, <http://www.ibm.com/pc/support>.
- Install the operating system on your server before you install the Advanced System Management device drivers. For information about installing the operating system, see the documentation that comes with your xSeries 220 or xSeries 330 server.

To install the operating system using ServerGuide™, use only ServerGuide version 6.0.3, or later.

Note: If you previously installed the operating system with ServerGuide version 6.0.2, make sure that you install the Advanced System Management device drivers from the *IBM Remote Supervisor Adapter Support* CD, or download the device drivers from the IBM Support Web site, <http://www.ibm.com/pc/support>. Do not install the device drivers from the directory that ServerGuide 6.0.2 created on the hard disk during its installation of the operating system. For information about installing the device drivers on the xSeries 220, see “Installing the Advanced System Management device drivers” on page 25; for the xSeries 330, see “Installing the Advanced System Management device drivers” on page 45.

- Update the basic input/output system (BIOS) code on your xSeries 220 or xSeries 330 server. The latest level of BIOS code for your server is available from the IBM Support Web site, <http://www.ibm.com/pc/support>. For information about how to update the BIOS code, see the documentation that comes with your xSeries 220 or xSeries 330 server.
- If you are planning to configure Simple Network Management Protocol (SNMP) trap alerts on the Remote Supervisor Adapter, you must install and compile the management information base (MIB) on your SNMP manager. If you do not want to install the most recent device drivers, you can use the MIB that is provided in

the MIB directory on the *IBM Remote Supervisor Adapter Support CD* that comes with the Remote Supervisor Adapter.

- If you want to use the operating system shutdown feature of the Advanced System Management (ASM) Web interface Server Power / Restart Control or use the ASM Web interface Remote Control features, you must install the agent component of the UM Server Extensions. This application is provided on the system-management software CD that comes with the xSeries 220 or xSeries 330 server. For information about installing the agent, see the documentation that comes with the system-management CD.
- If you want to configure the remote alert recipients for Director over LAN or Director over modem, the remote alert recipient must be an IBM Director server with UM Server Extensions.

Installation requirements

The following items are required to install the Remote Supervisor Adapter:

- IBM xSeries 220 server or IBM xSeries 330 server
- Advanced System Management device drivers for the Remote Supervisor Adapter, which are supported on the following operating systems:
 - Novell NetWare 4.2, or later
 - Microsoft® Windows NT® 4.0 Server (with Service Pack 4 or later)
 - Microsoft Windows® 2000 Server
 - Microsoft Windows 2000 Advanced Server
 - SCO UnixWare 7.1.1, or later
- Documentation that comes with your server

If you want to access the Remote Supervisor Adapter remotely through a Web browser, the supported Web browsers and browser requirements are:

- Microsoft Internet Explorer 4.0 (with Service Pack 1), or later
- Netscape Navigator 4.72, or later (version 6.0 is not currently supported)
- Java™ enabled Web browser (See your browser documentation or online Help for instructions about enabling its Java support.)
- Support for JavaScript 1.2, or later (See your browser documentation or online Help for instructions about enabling its JavaScript support.)
- Support of HTTP Version 1.0, or later
- Minimum display resolution of 800 x 600 pixels and 256 colors

Note: The ASM Web interface and the ASM text-based interface do not support the double-byte character set (DBCS) languages.

Remote Supervisor Adapter features

The Remote Supervisor Adapter features the following:

- Continuous health monitoring and control
- Advanced Predictive Failure Analysis® (PFA)
- Configurable notification and alerts
- Event logs that are timestamped, saved by battery backup, and can be attached to e-mail alerts

- Remote graphics console redirection
- LAN, serial, and Advanced System Management (ASM) interconnect remote access
- Point-to-point protocol (PPP) support
- Simple Network Management Protocol (SNMP) and e-mail alerts
- Domain Name System (DNS) and Dynamic Host Configuration Protocol (DHCP) support
- Remote power control
- Microsoft Windows NT and Windows 2000 blue-screen capture
- Remote firmware update and access to critical server settings
- Independent power, which enables around-the-clock access to the server even when the server power is off.

About your documentation

The documentation that comes with the Remote Supervisor Adapter includes the following:

- *IBM Remote Supervisor Adapter Installation Guide* (this book)
This printed document is designed to assist you with the installation of the adapter.
- *IBM Documentation CD*
This CD contains the publications for the Remote Supervisor Adapter in Adobe Acrobat Portable Document Format (PDF). The publications on the CD are:
 - *IBM Remote Supervisor Adapter Installation Guide* (this book)
 - *IBM Remote Supervisor Adapter User's Guide for the xSeries 330*
The *User's Guide* describes the features and functions of the Advanced System Management (ASM) Web interface and the text-based user interface.
 - *IBM Remote Supervisor Adapter User's Guide for the xSeries 220*
The *User's Guide* describes the features and functions of the Advanced System Management (ASM) Web interface and the text-based user interface.
 - *IBM Safety Book*
Before you install the Remote Supervisor Adapter, be sure to read the caution and danger statements that are contained in this book.

System requirements

The *IBM Documentation CD* includes the *IBM Documentation Browser*. You can use the Documentation Browser to view the Remote Supervisor Adapter documentation from your server or any workstation that meets the following requirements:

- Microsoft Windows NT 4.0 (with Service Pack 4 or later), Windows 95, Windows 98, Windows 2000
- 100 MHz Intel[®] Pentium[®]-class microprocessor
- 32 MB RAM
- Adobe Acrobat Reader 3.0 or later (Adobe Acrobat Reader software is included on your *IBM Documentation CD*, and you can install it when you run the Documentation Browser)

Starting the IBM Documentation Browser

To start the Documentation Browser on a system running with Windows NT, 95, 98, or 2000, do the following:

- If you have autostart enabled, place the IBM Documentation CD in your CD-ROM drive. When you close the CD-ROM drive, the Documentation Browser program starts automatically.
- If you have disabled Autostart in your system, click **Start**→ **Run**; then type:
x:\docwin.cmd
in the open field (where x is the drive letter assigned to your CD-ROM drive).
Click **OK**.

Using the IBM Documentation Browser

The IBM Documentation Browser enables you to browse the contents of the *IBM Documentation CD*, select from a list of available topics, see brief descriptions of the selected topics, and view selected topics using Adobe Acrobat Reader.

Note: The first time you run the Documentation Browser, you need to configure the preferences for your system. The Preferences window opens automatically. Use the Preferences window to specify the location of your Adobe Acrobat Reader (if installed) or to install Adobe Acrobat Reader. You can also specify the location of an HTML viewer (such as Netscape Navigator or Microsoft Internet Explorer). For more information, see the on-line Help available from the Preferences window.

To use the Documentation Browser:

1. From the Product drop box, select **Remote Supervisor Adapter**.
2. From the Topics selection list, select a book; then, click **View**. Adobe Acrobat Reader starts and the selected topics install automatically.

If you want to change the program preferences, click **Preferences**. Click **Help** for detailed information about using the IBM Documentation Browser. Click **Close** when you are finished.

Notices and statements used in this book

The caution and danger statements also appear in the multilingual safety information book provided on the *IBM Documentation CD*. Each statement is numbered for easy reference to the corresponding statement in the safety booklet.

The notice and statement definitions are as follows:

- **Notes:** These notices provide important tips, guidance, or advice.
- **Important:** These notices provide information or advice that might help you avoid inconvenient or problem situations.
- **Attention:** These notices indicate possible damage to programs, devices, or data. An attention notice is placed just before the instruction or situation in which damage could occur.
- **Caution:** These statements indicate situations that can be potentially hazardous to you. A caution statement is placed just before the description of a potentially hazardous procedure step or situation.
- **Danger:** These statements indicate situations that can be potentially lethal or extremely hazardous to you. A danger statement is placed just before the description of a potentially lethal or extremely hazardous procedure step or situation.

Handling static-sensitive devices

Attention: Static electricity can damage server components or options. To avoid damage, keep static-sensitive devices in their static-protective package until you are ready to install them.

To reduce the possibility of electrostatic discharge when you handle options and server components, observe the following precautions:

- Limit your movement. Movement can cause static electricity to build up around you.
- Handle the device carefully, holding it by its edges or its frame.
- Do not touch solder joints, pins, or exposed printed circuitry.
- Do not leave the device where others can handle and possibly damage the device.
- While the device is still in its static-protective package, touch it to an unpainted metal part of the server for at least two seconds. (This drains static electricity from the package and from your body.)
- Remove the device from its package and install it directly into your server without setting it down. If it is necessary to set the device down, place it in its static-protective package. Do not place the device on your server cover or any metal surface.
- Take additional care when handling devices during cold weather because heating reduces indoor humidity and increases static electricity.

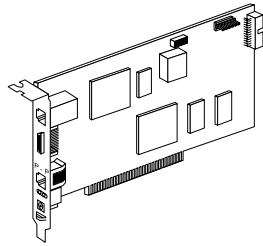
Unpacking and verifying components

The following sections list the items that come with the Remote Supervisor Adapter and describe the Remote Supervisor Adapter components. You can install the Remote Supervisor Adapter in a peripheral component interconnect (PCI) expansion slot only.

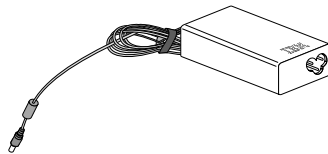
Inventory checklist

The Remote Supervisor Adapter option package contains the following items:

- Remote Supervisor Adapter



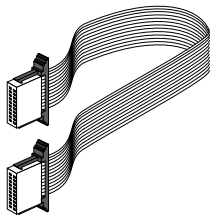
- Power-supply adapter



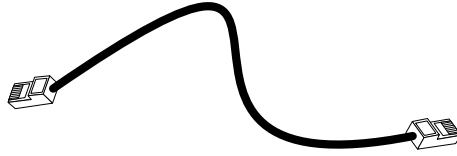
- Power cord



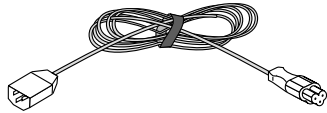
- 20-pin ribbon cable (not used on the xSeries 330)



- Advanced System Management link cable (CAT 5 Ethernet cable- not required on the xSeries 220)

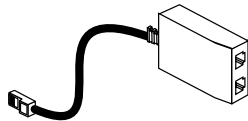


- Universal power cord



- Advanced System Management (ASM) Interconnect module

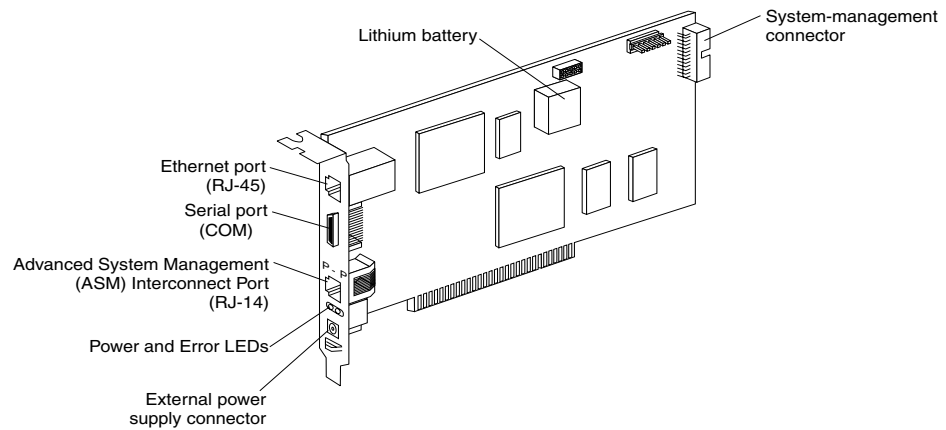
Attention: To avoid damage to the Ethernet connector on the Remote Supervisor Adapter, do not plug the ASM Interconnect module into the Ethernet (RJ-45) port.



- *IBM Remote Supervisor Adapter Support CD*
This CD helps you configure hardware and install device drivers.
- *IBM Documentation CD*
The contents of this CD are described in “About your documentation” on page 3.

Remote Supervisor Adapter components

The following illustration shows the Remote Supervisor Adapter and the location of the connectors and components.



Descriptions of the Remote Supervisor Adapter components are as follows:

Ethernet port (RJ-45)

Connect a CAT 3 or CAT 5 Ethernet cable to this port to enable a LAN connection or TELNET session. The Ethernet port LEDs on the Remote Supervisor Adapter are described in “Cabling the Ethernet LAN port” on page 16.

Attention: The RJ-45 connectors on the IBM Remote Supervisor Adapter are for only Ethernet and Advanced System Management Interconnect use and are not for telecommunications use.

Serial port (COM)

Connect a serial cable to this port to enable system management through a modem, or connect a null modem cable to enable system management through a workstation or laptop computer.

Advanced System Management (ASM) Interconnect port (RJ-14)

Attach an ASM Interconnect module (which comes with the Remote Supervisor Adapter) to this port to connect the Remote Supervisor Adapter to the other devices on the ASM Interconnect network.

Power and error LEDs

The green power LED indicates the status of the power connection. The amber Error LED indicates an error on the Remote Supervisor Adapter.

External power-supply connector

Connect the power-supply adapter (comes with the Remote Supervisor Adapter) to this connector. This connection provides power to the Remote Supervisor Adapter, independent of the server power supply.

Lithium battery

This provides backup of the Remote Supervisor Adapter real-time clock, event log, and configuration settings.

System-management connector

Connect the 20-pin ribbon cable (which comes with the Remote Supervisor Adapter) to this connector on the Remote Supervisor Adapter and to the system-management connector on the xSeries 220 server system board. You do not use this connector when installing the adapter in the xSeries 330 server.

To install the Remote Supervisor Adapter, proceed to Chapter 2, “Installing the adapter in an xSeries 220,” on page 11. Or, proceed to Chapter 3, “Installing the adapter in an xSeries 330,” on page 31.

Chapter 2. Installing the adapter in an xSeries 220

Complete the following tasks to install and configure the Remote Supervisor Adapter:

- Task 1. Verify and complete the installation prerequisites (see “Installation prerequisites” on page 1).
- Task 2. Unpack and verify the components (see “Unpacking and verifying components” on page 6).
- Task 3. Install the Supervisor Adapter in the server (see “Installing the Remote Supervisor Adapter” on page 12).
- Task 4. Connect the external power supply (see “Connecting the power-supply adapter” on page 15).
- Task 5. Connect the Ethernet and serial port cables (see “Connecting the LAN and serial port cables” on page 16).
- Task 6. Update the Remote Supervisor Adapter firmware (see “Updating the Remote Supervisor Adapter firmware” on page 17).
- Task 7. Perform the initial configuration to enable remote access to the Remote Supervisor Adapter (see “Configuring your system to enable remote access to the Remote Supervisor Adapter” on page 19). Use this step to:
 - Configure the Ethernet port
 - Configure the serial (COM) port
 - Set up the point-to-point protocol
- Task 8. Install the Advanced System Management device drivers (see “Installing the Advanced System Management device drivers” on page 25).
- Task 9. Configure the remote control password to enable the ASM Web interface remote control features (see “Configuring the remote control password” on page 29).
- Task 10. Complete the installation (see “Completing the installation” on page 30).
- Task 11. Plan and cable the ASM interconnect network (see “Planning and cabling your interconnect network” on page 47).

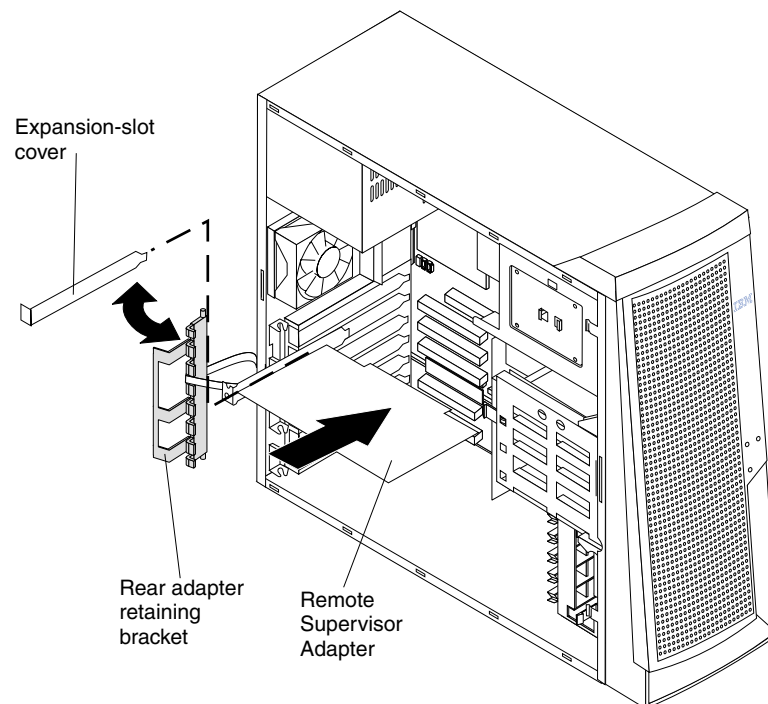
Installing the Remote Supervisor Adapter

Note: The illustrations and procedures in this chapter are specific to the IBM xSeries 220 server.

Attention: When you handle static-sensitive devices, take precautions to avoid damage from static electricity. For details about handling static-sensitive devices, see “Handling static-sensitive devices” on page 5.

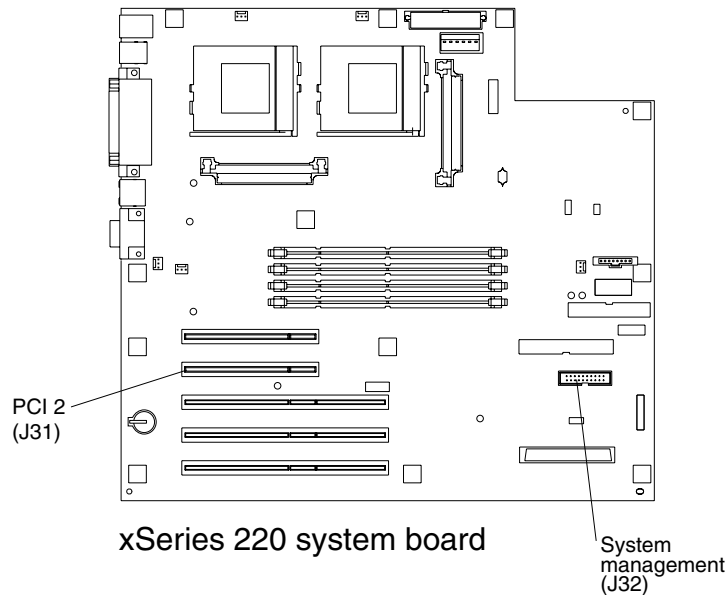
To install the Remote Supervisor Adapter, complete the following steps:

1. Review the safety precautions in “Safety” on page iii.
2. Turn off the server and attached devices and disconnect all external cables and power cords.
3. Remove the server cover. For instructions, see the documentation that comes with your server.
4. Remove the rear adapter retaining bracket from the server, as shown in the following illustration.



5. Remove the expansion-slot cover from PCI slot 2. Store it in a safe place for future use.

Attention: Expansion-slot covers must be installed on all vacant slots. This maintains the electronic emission characteristics of the server and ensures proper cooling of server components.



6. Remove the adapter from the static-protective package.

Attention: Avoid touching the components and gold-edge connectors on the adapter.

7. Install the adapter as follows:

- a. Carefully grasp the adapter by its top edge or upper corners, and align it with PCI slot 2 on the system board.

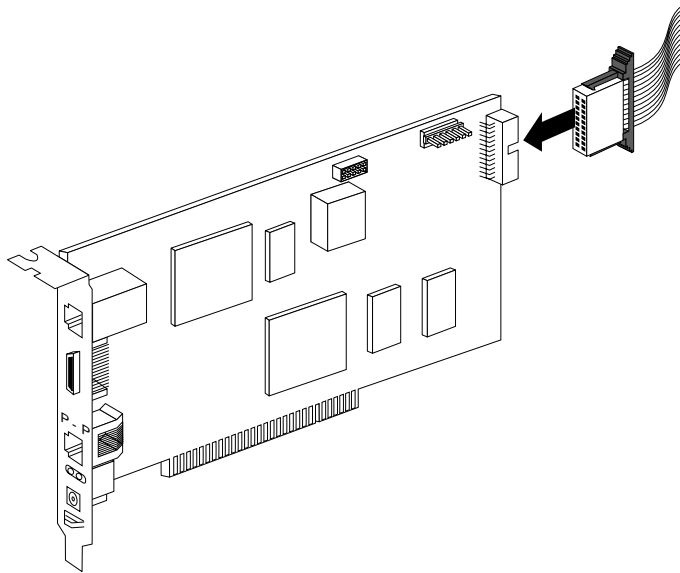
Note: You must install the Remote Supervisor Adapter in PCI slot 2.

- b. Press the adapter firmly into the PCI slot.

Attention: When you install the adapter in the server, be sure that it is completely and correctly seated in the system-board connector before you apply power. Incomplete insertion might cause damage to the system board or the adapter.

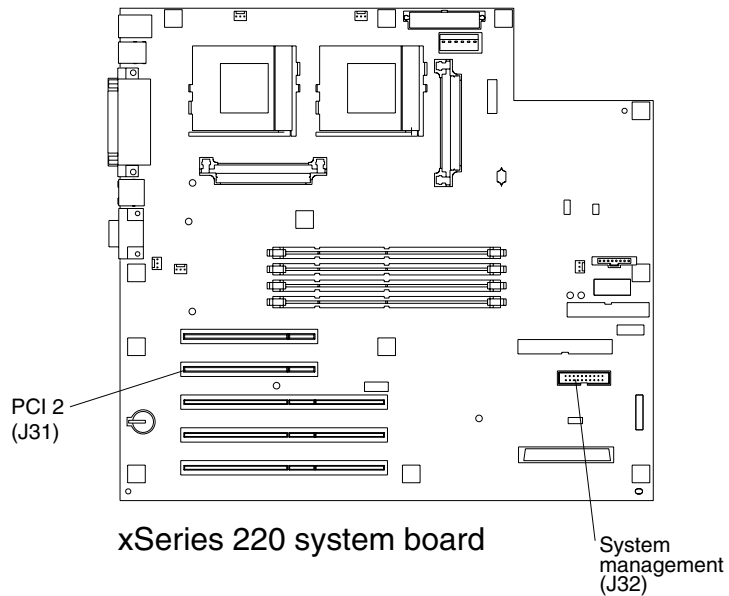
8. Replace the rear adapter retaining bracket.

9. Connect the 20-pin ribbon cable as follows:
 - a. Connect one end of the 20-pin ribbon cable to the system-management connector on the Remote Supervisor Adapter. The 20-pin ribbon cable connector ends are keyed for proper installation.



- b. Connect the other end of the cable to the system-management connector on the system board.

The following illustration shows the location of the system-management connector on the xSeries 220 system board.



10. Replace the side cover.
11. Reconnect the external cables and power cords that you disconnected in step 2.

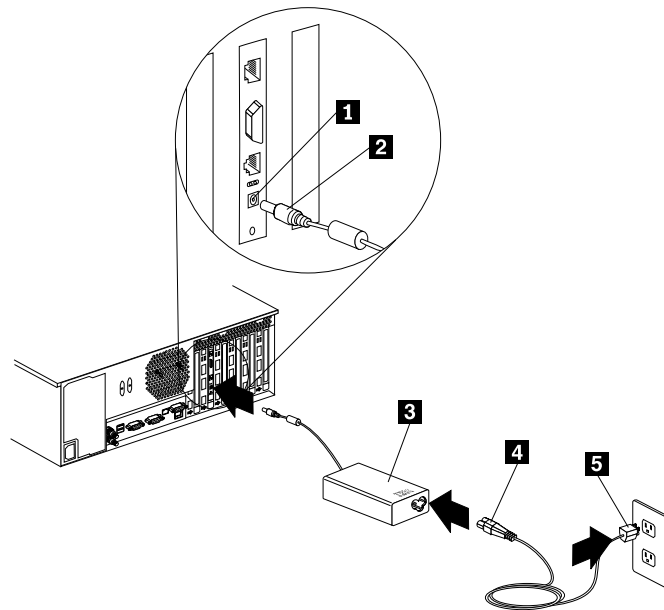
Continue with “Connecting the power-supply adapter” on page 15.

Connecting the power-supply adapter

You must attach the power-supply adapter that comes with the Remote Supervisor Adapter. After you connect the power-supply adapter to the Remote Supervisor Adapter, you can use the power cord to connect the power supply adapter to a properly grounded electrical outlet or use the universal power cord (comes with the Remote Supervisor Adapter) to connect the power supply adapter to a power distribution unit (PDU) or to an uninterruptible power supply (UPS).

To connect the power supply adapter and power cord, complete the following steps:

1. From the power supply adapter **3**, connect the power supply control cable **2** to the power supply adapter connector on the Remote Supervisor Adapter **1**.



2. Connect one end of the power cord **4** to the connector on the power supply adapter **3**.
3. Connect the other end of the power cord **5** to a properly grounded electrical outlet.

Note: Alternately, you can connect one end of the universal power cord to the power supply adapter; then, connect the other end to a power distribution unit (PDU) or to an uninterruptible power supply (UPS).

4. Make sure that the Remote Supervisor Adapter power LED is green. For the location of the power LED, see the illustration in “Cabling the Ethernet LAN port” on page 16.

Continue with “Connecting the LAN and serial port cables” on page 16.

Connecting the LAN and serial port cables

You can manage your server remotely using the connections and user interfaces that are described in the following table. Choose the interface method that you want to use to perform remote management; then, perform the indicated cabling procedure.

Table 1. Cabling tasks to enable remote access to the Remote Supervisor Adapter.

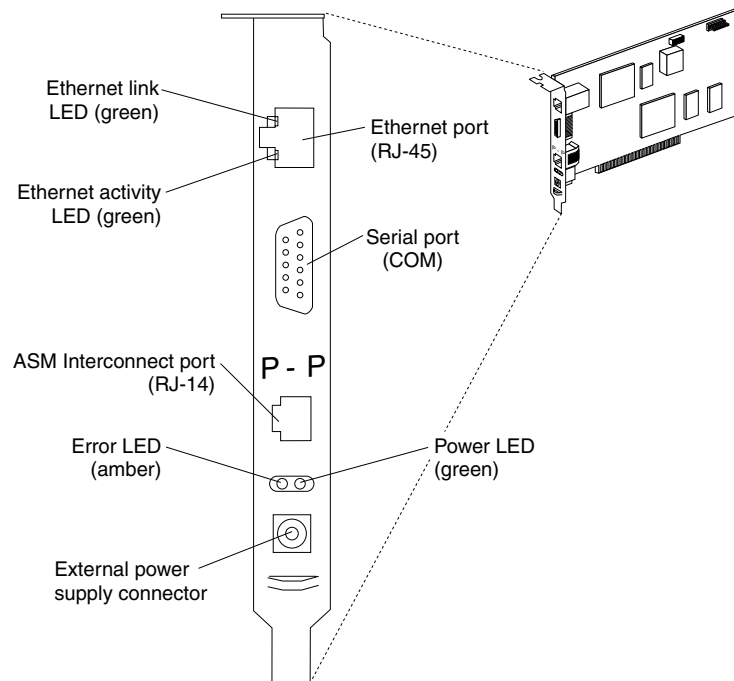
User interface to the Remote Supervisor Adapter	Connection to the Remote Supervisor Adapter	For the cabling procedure, see:
ASM Web interface using the HTTP protocol	LAN using the Ethernet port	"Cabling the Ethernet LAN port"
Text-based user interface using the TELNET protocol		
Text-based user interface using a modem or a null modem	Serial (COM) port	"Cabling the serial (COM) port" on page 17
ASM Web interface using point-to-point (PPP) protocol		
Text-based user interface using the TELNET protocol over PPP		

Cabling the Ethernet LAN port

To attach the Ethernet cables, complete the following steps.

Attention: To avoid damage to the Ethernet connector, do not plug the ASM Interconnect module into the Ethernet (RJ-45) port.

1. Connect one end of a Category 3 or Category 5 Ethernet cable to the Ethernet port on the Remote Supervisor Adapter. Connect the other end of the Ethernet cable to your network.
2. Check the Ethernet LEDs. The location of the LEDs is shown in the following illustration.



Ethernet link

The green Ethernet link LED is lit when the Ethernet cable is connected properly.

Ethernet activity

The green Ethernet activity LED is flashing when there is Ethernet activity.

If you plan to use the serial port connection, continue with “Cabling the serial (COM) port”; otherwise, go to “Updating the Remote Supervisor Adapter firmware”.

Cabling the serial (COM) port

To cable the serial (COM) port, connect a modem or null modem cable to the serial port on the Remote Supervisor Adapter.

Continue with “Updating the Remote Supervisor Adapter firmware”.

Updating the Remote Supervisor Adapter firmware

You can use the IBM Remote Supervisor Utility program to check the firmware level on the Remote Supervisor Adapter and to update the firmware. This program is a DOS utility on the *IBM Remote Supervisor Adapter Support* CD that comes with the Remote Supervisor Adapter. You can obtain the latest firmware code from the IBM Support Web site, <http://www.ibm.com/pc/support>.

After you initially configure the Remote Supervisor Adapter to enable remote access through a Web connection, you can update the Remote Supervisor Adapter firmware using the ASM Web interface. The procedures to initially configure the Remote Supervisor Adapter for remote access are described later in this chapter.

For information about using the ASM Web interface to monitor your server, see the *IBM Remote Supervisor Adapter User's Guide for the xSeries 220*, which is available in Adobe Acrobat Portable Document Format (PDF) on the *IBM Documentation CD*.

To update the Remote Supervisor Adapter firmware, complete the following steps:

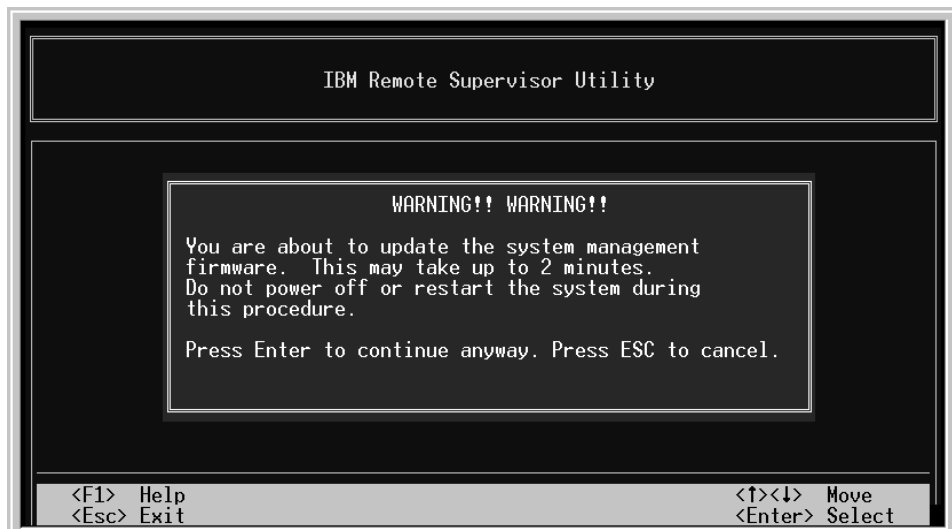
1. Turn on the server.
2. Insert the *IBM Remote Supervisor Adapter Support CD* into the CD-ROM drive and close the CD-ROM drive before the server completes power-on self-test (POST).

Note: If you do not insert the CD and close the CD-ROM drive before POST completes, you must restart the server with the CD in the CD-ROM drive.

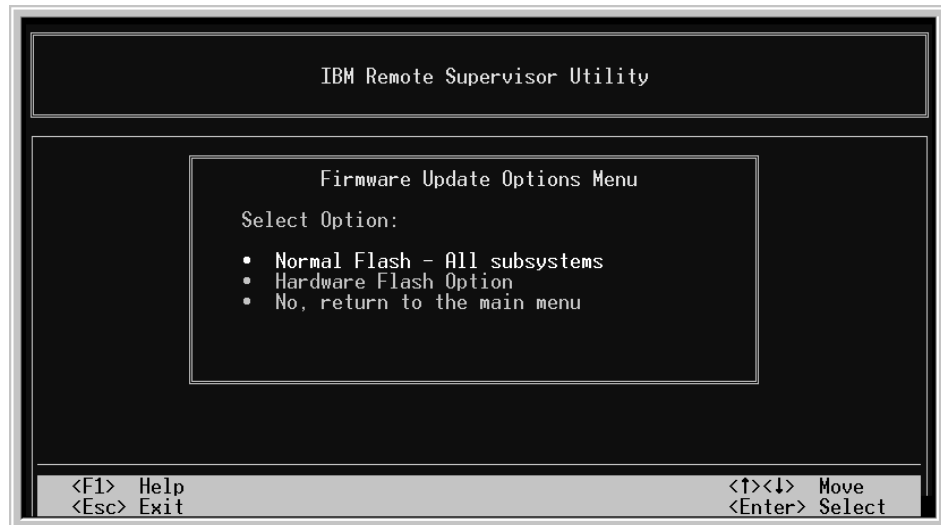
3. The CD starts automatically and the IBM Remote Supervisor Utility window opens.



4. Use the Up Arrow and Down Arrow keys (↑ and ↓) to select **Update System Management Firmware**; then, press Enter.
5. A warning window opens; press Enter to continue.



- The Firmware Update Options Menu window opens. Use the arrow keys to select **Normal Flash - All subsystems**; then, press Enter. The Firmware Update Status window opens and displays a message to confirm you want to update the firmware.



- Press Enter. The system updates the Remote Supervisor Adapter firmware.
- When the Remote Supervisor Adapter firmware update process is complete, press Enter to return to the Utility program main window.

Continue with “Configuring your system to enable remote access to the Remote Supervisor Adapter”.

Configuring your system to enable remote access to the Remote Supervisor Adapter

The Remote Supervisor Adapter requires initial configuration to enable remote access through the Ethernet and serial ports. From Table 2, choose the interface method that you want to use to perform remote management; then, perform the indicated configuration procedure.

Table 2. Configuration tasks to enable remote access to the Remote Supervisor Adapter.

User interface to Remote Supervisor Adapter	Connection to Remote Supervisor Adapter	For the configuration procedure, see:
ASM Web interface using the HTTP protocol	LAN using the Ethernet port	“Configuring the Ethernet settings” on page 20
Text-based user interface using the TELNET protocol		

Table 2. Configuration tasks to enable remote access to the Remote Supervisor Adapter.

User interface to Remote Supervisor Adapter	Connection to Remote Supervisor Adapter	For the configuration procedure, see:
Text-based user interface using a modem or a null modem	Serial (COM) port	"Configuring the serial port" on page 22 and "Setting up point-to-point protocol" on page 24
ASM Web interface using point-to-point (PPP) protocol		
Text-based user interface using the TELNET protocol over PPP		

For detailed information about using the ASM Web interface and the text-based user interface, see the *IBM Remote Supervisor Adapter User's Guide for the xSeries 220*.

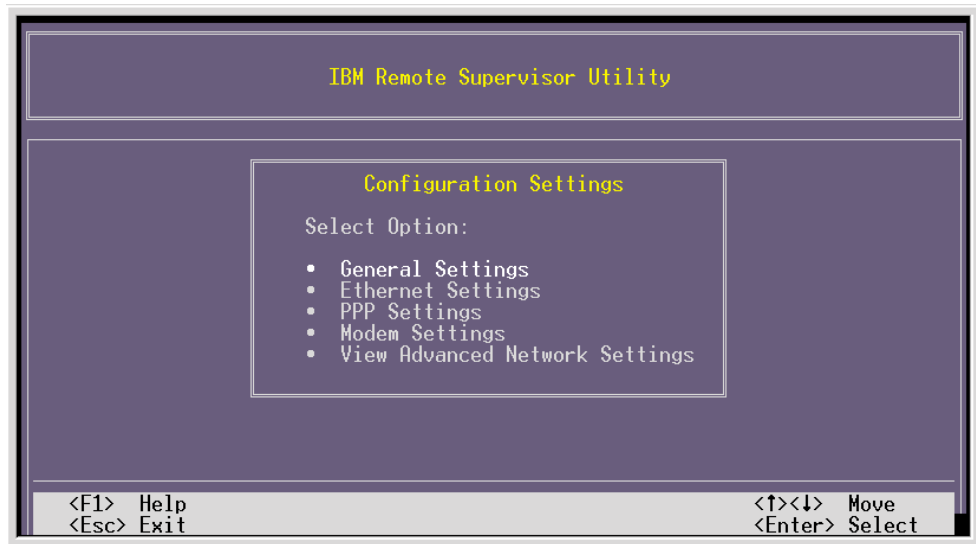
Configuring the Ethernet settings

If you have an accessible, active, and configured dynamic host configuration protocol (DHCP) server on your network, the hostname, IP address, gateway address, subnet mask, and DNS server IP address are set automatically. You do not need to perform further configuration tasks to enable the Ethernet connection because the default value for the **DHCP Setting** field is Enabled. If you need to configure the serial port, go to "Configuring the serial port" on page 22; otherwise, go to "Installing the Advanced System Management device drivers" on page 25.

If you do not have a DHCP server on your network, complete the following steps to configure the Ethernet settings:

1. If you completed the update firmware procedure and the Utility program main window is open, go to step 4; otherwise, continue with step 2.
2. Turn on the server.
3. Insert the *IBM Remote Supervisor Adapter Support* CD into the CD-ROM drive and close the CD-ROM drive before the server completes POST. The CD starts automatically and the IBM Remote Supervisor Utility window opens.

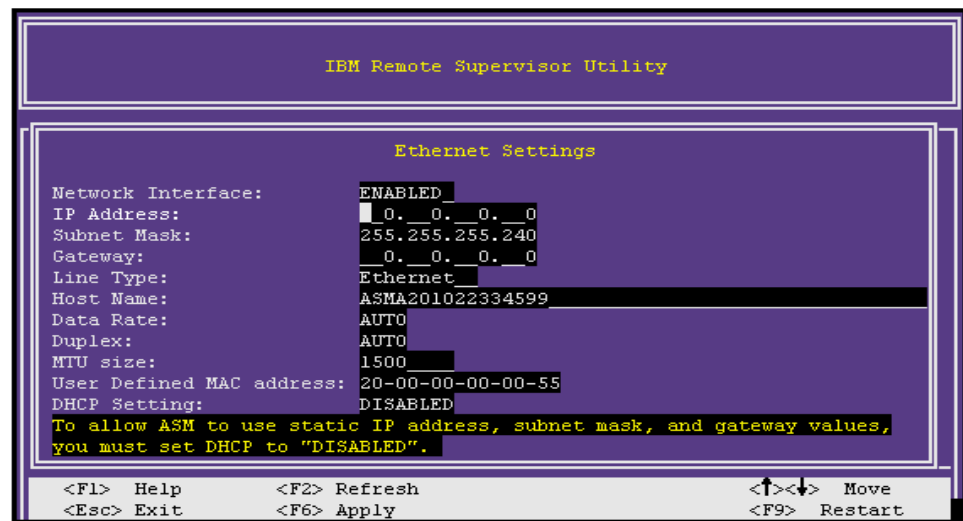
Note: If you do not insert the CD and close the CD-ROM drive before POST completes, you must restart the server with the CD in the CD-ROM drive.
4. Use the Up Arrow and Down Arrow keys (↑ and ↓) to select **Configuration Settings**; then, press Enter. The Configuration Settings window opens.



- Use the arrow keys to select **Ethernet Settings**; then, press Enter.

The Ethernet Settings window opens.

Note: The values in the following window are only examples; your settings will be different.



- Use the arrow keys to navigate to each field. Your system administrator can provide the information for the following fields:

Network Interface

The default value is Enabled; verify that it is still set to Enabled.

IP Address

Type the IP address of the Remote Supervisor Adapter.

Subnet Mask

Type the subnet mask used by the Remote Supervisor Adapter. The default value is 255.255.255.0.

Gateway

Type your network gateway router.

Host Name

Type the IP hostname of the Remote Supervisor Adapter. The default hostname is ASMA<burned-in MAC address>.

For detailed information about the Ethernet settings, see the *IBM Remote Supervisor Adapter User's Guide for the xSeries 220*.

7. You must change the DHCP Setting field to **Disabled**. The default value is Enabled.
8. Press F6 to apply the change.
9. Press Esc. In the Warning window that opens, press Enter to restart the Remote Supervisor Adapter.
10. Press Esc to return to the Configuration Settings window.
11. If you need to configure the serial port, go to "Configuring the serial port"; otherwise, continue with step 12.
12. Press Esc to return to the Utility program main window.
13. Use the arrow keys to select **Exit Utility** from the menu or press Esc to close the Utility program.
14. Remove the CD from the CD-ROM drive. The Remote Supervisor Adapter restarts automatically.

Continue with "Installing the Advanced System Management device drivers" on page 25.

Configuring the serial port

To configure the Remote Supervisor Adapter serial port for access using a modem or null modem, complete the following steps:

1. If you completed the procedure for configuring the Ethernet port and the Configuration Settings window is open, go to step 5; otherwise, continue with step 2.
2. Turn on the server.
3. Insert the *IBM Remote Supervisor Adapter Support* CD into the CD-ROM drive and close the CD-ROM drive before the server completes POST. The CD starts automatically, and the IBM Remote Supervisor Utility window opens.

Note: If you do not insert the CD and close the CD-ROM drive before POST completes, you must restart the server with the CD in the CD-ROM drive.

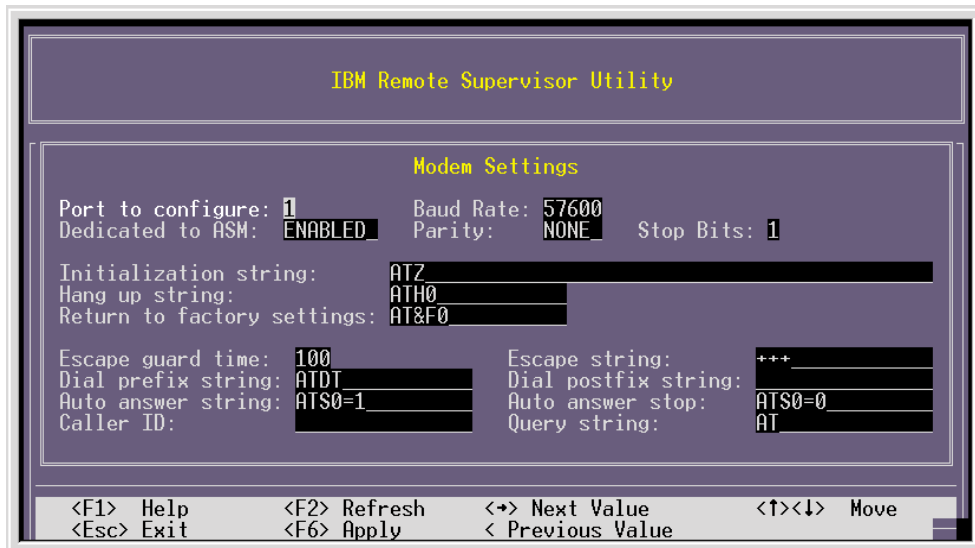
4. Use the Up Arrow and Down Arrow keys (↑ and ↓) to select **Configuration Settings**; then, press Enter.

The Configuration Settings window opens.

5. Use the arrow keys to select **Modem Settings**; then, press Enter.

The Modem Settings window opens.

Note: The values in the following window are only examples; your settings might be different.



- Verify the following serial port values:

Baud Rate

The default is 57600. Make sure that the baud rate matches the baud rate of the device you are connecting to the serial port on the Remote Supervisor Adapter.

Dedicated to ASM

The default is Disabled. If you are using point-to-point protocol (PPP), make sure that you set this field to Enabled. If the value in this field is Enabled when the server is restarted, the serial port remains dedicated to system management and is not returned to the operating system.

You can either dedicate the integrated serial port on the Remote Supervisor Adapter to system management or share it with the operating system. If the serial port is dedicated to system management, it serves only the Remote Supervisor Adapter and is always available for dial-in or dial-out alerting purposes. You cannot view the port using the operating system or any application.

If the serial port is shared with the operating system, it is dedicated to the Remote Supervisor Adapter only while the server is turned off or during POST. The port is returned to the operating system after POST completes. You can view the port using the operating system or any application. The Remote Supervisor Adapter takes over the port from the operating system only when information about a critical event is received. The Remote Supervisor Adapter dials out and transmits an alert and keeps the port dedicated until the server is restarted. The port is no longer available to the operating system or applications.

Parity

The default is None.

Stop Bits

The default is 1.

Note: The data bits value is preset to 8 and cannot be changed.

For detailed information about the serial port and modem settings, see the *IBM Remote Supervisor Adapter User's Guide for the xSeries 220*.

- If you make changes to the serial port settings, press F6 to apply the change.
- Press Esc to return to the Configuration Settings window.

9. If you need to set up PPP, go to “Setting up point-to-point protocol”; otherwise, continue with step 10.
10. Press Esc to return to the Utility program main window.
11. Use the arrow keys to select **Exit Utility** from the menu or press Esc to close the Utility program.
12. Remove the CD from the CD-ROM drive. The Remote Supervisor Adapter restarts automatically.

Continue with “Installing the Advanced System Management device drivers” on page 25.

Setting up point-to-point protocol

The Remote Supervisor Adapter serial port supports point-to-point protocol (PPP). The PPP enables TCP/IP communication over the serial port, which enables Web-based management and TELNET sessions over a modem.

To set up PPP, complete the following steps:

1. If you completed the procedure for configuring the serial port and the Configuration Settings window is open, go to step 6; otherwise, continue with step 2.
2. Turn on the server.
3. Insert the *IBM Remote Supervisor Adapter Support* CD into the CD-ROM drive and close the CD-ROM drive before the server completes POST.

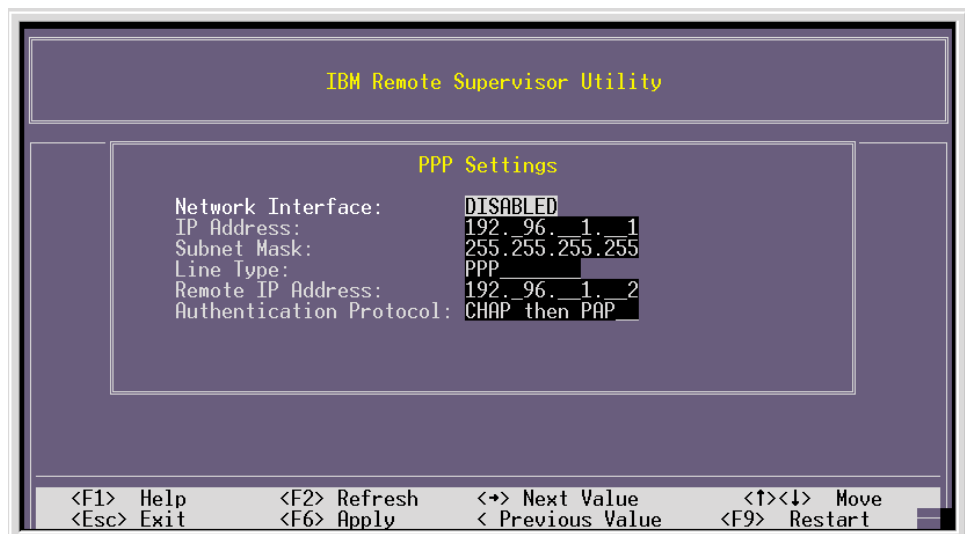
Note: If you do not insert the CD and close the CD-ROM drive before POST completes, you must restart the server with the CD in the CD-ROM drive.
4. The CD starts automatically and the IBM Remote Supervisor Utility window opens.
5. Use the Up Arrow and Down Arrow keys (↑ and ↓) to select **Configuration Settings**; then, press Enter.

The Configuration Settings window opens.

6. Use the arrow keys to select **PPP Settings**; then, press Enter.

The PPP Settings window opens.

Note: The values in these screens are examples.



7. Use the arrow keys to navigate to each field. Verify the values in the following fields:

Network Interface

The default is Disabled. Change this field to Enabled.

IP Address

The default value is 192.96.1.1. Make sure that the client is configured to allow the server to assign this IP Address.

Subnet Mask

The default value is 255.255.255.255.

Line Type

The value is set to PPP.

Remote IP Address

The default value is 192.96.1.2.

Authentication Protocol

The default is CHAP then PAP. Make sure that the value in this field matches your client settings.

For detailed information about the PPP settings, see the *IBM Remote Supervisor Adapter User's Guide for the xSeries 220*.

8. Press F6 to apply the changes.
9. Press Esc to return to the Configuration Settings window.
10. Press Esc to return to the Utility program main window.
11. Use the arrow keys to select **Exit Utility** from the menu or press Esc to close the Utility program.
12. Remove the CD from the CD-ROM drive. The Remote Supervisor Adapter restarts automatically.

Continue with "Installing the Advanced System Management device drivers".

Installing the Advanced System Management device drivers

You must install the Advanced System Management device drivers for the Remote Supervisor Adapter. These device drivers are included on the *IBM Remote Supervisor Adapter Support* CD that comes with the adapter. You can also obtain the latest device drivers from the IBM Web site, <http://www.ibm.com/pc/support>.

The following sections describe the procedure for installing the Advanced System Management device drivers on your server, depending on your operating system.

Notes:

1. Make sure that the operating system is installed on your server before you install the Advanced System Management device drivers. For information about installing the operating system, see the documentation that comes with your server.
2. To install the operating system using ServerGuide, use only ServerGuide version 6.0.3, or later. If you install the Remote Supervisor Adapter and then install Microsoft Windows NT or Windows 2000 using ServerGuide version 6.0.3 or later, the Advanced System Management device drivers are installed automatically and you can skip this step and go to "Configuring the remote control password" on page 29.
3. If you previously installed the operating system with ServerGuide version 6.0.2, make sure that you install the Advanced System Management device drivers from the *IBM Remote Supervisor Adapter Support* CD, not from the directory that

ServerGuide 6.0.2 created on the hard disk during its installation of the operating system, or install the latest device drivers from the IBM Support Web site at <http://www.ibm.com/pc/support>. For the Windows 2000 operating system, follow the installation instructions in “Installing Windows 2000 device drivers” on page 26.

4. If a system-management application (for example, IBM Director) is running on the server on which you are installing the device drivers, be sure to stop the application before installing the device drivers.

For information about updating the device drivers, see your server documentation.

After you install the Advanced System Management device drivers, if you want to set the remote control password, go to “Configuring the remote control password” on page 29; otherwise, go to “Completing the installation” on page 30.

Installing Windows 2000 device drivers

To install the Advanced System Management device drivers for Windows 2000, use one of the following methods:

- Hardware Wizard
- Manual installation

Note: If IBM Netfinity Director, IBM Director, or UM Services is running on the server, be sure to stop it before proceeding.

Using the Hardware Wizard to install the device drivers

To use the automatic Windows Hardware Wizard to install the Remote Supervisor Adapter Advanced System Management device drivers for Windows 2000, complete the following steps:

1. Restart the server.

The Hardware Wizard automatically checks for new hardware. When complete, the Found New Hardware Wizard window opens.

2. Click **Next**.

The Remote Supervisor hardware is automatically detected as an Unknown device.

3. Select **Search for a suitable driver for my device**; then, click **Next**.

4. Insert the *IBM Remote Supervisor Adapter Support* CD into the CD-ROM drive on the server.

5. Under Optional search locations, select **CD-ROM drives**. Click **Next** to continue.

6. The Hardware Wizard locates on the CD the appropriate drivers for the Supervisor Adapter hardware, and then installs them. If the wizard finds multiple versions of the drivers, select the most recent version.

7. Follow the instructions in the wizard until the Finish message displays. Click **Finish** to complete the installation of the drivers.

Note: The Hardware Wizard might repeat the installation process four times as it installs all of the Supervisor Adapter device drivers.

Continue with “Configuring the remote control password” on page 29.

Manually installing the device drivers

To manually install the Windows 2000 device drivers, complete the following steps:

1. On the desktop, right-click the **My Computer** icon; then, select **Properties** → **Hardware** → **Device Manager**.

The Remote Supervisor Adapter hardware is detected automatically as an unknown device under other devices.

2. Select **Unknown device**; then, right-click and select **Properties**.
3. Click the Driver tab; then, select **Update Driver**.

The Welcome to the Upgrade Device Driver Wizard window opens.

4. Click **Next**.
5. Select **Search for a suitable driver for my device**; then, click **Next**.
6. Insert the *IBM Remote Supervisor Adapter Support* CD into the CD-ROM drive on the server.
7. Under Optional search locations, select **CD-ROM drives**. Click **Next** to continue.
8. The Hardware Wizard locates on the CD the appropriate drivers for the Supervisor Adapter hardware, and then installs them. If the wizard finds multiple versions of the drivers, select the most recent version.
9. Follow the instructions in the Wizard until the Finish message displays. Click **Finish** to complete the installation of the drivers.

Note: The Hardware Wizard might repeat the installation process four times as it installs all of the Supervisor Adapter device drivers.

Continue with “Configuring the remote control password” on page 29.

Installing Windows NT device drivers

To install the Advanced System Management device drivers for Windows NT, use one of the following methods:

- Non-interactive

The non-interactive method for installing the Advanced System Management device drivers accepts the default values for any window prompts that appear. You are prompted to respond only if an error occurs during installation.

- Interactive

The normal, or interactive method, prompts you with instructions and waits for you to respond before continuing with the installation.

Note: If IBM Netfinity Director, IBM Director, UM Services, or IBM Netfinity Manager is running on the server, be sure to stop it before proceeding.

Using the non-interactive method

To use the non-interactive method, complete the following steps:

1. Open a Windows NT command prompt; then, type one of the following commands:
 - If the installation is from a diskette, type:
`A:\NT\SETUP -q`
(where *A* is the drive letter assigned to your diskette drive).
Press Enter.
 - If the installation is from a CD, type:
`D:\DD\NT\SETUP -q`
(where *D* is the drive letter assigned to your CD-ROM drive).
Press Enter.
2. Follow the instructions that appear in the window.

Continue with “Configuring the remote control password” on page 29.

Using the interactive method

To use the interactive method, complete the following steps:

1. Open a Windows NT command prompt; then, type one of the following commands:
 - If the installation is from a diskette, type:
A:\NT\SETUP
(where *A* is the drive letter assigned to your diskette drive).
Press Enter.
 - If the installation is from a CD, type:
D:\DD\NT\SETUP
(where *D* is the drive letter assigned to your CD-ROM drive).
Press Enter.
2. Follow the instructions that appear in the window.

Continue with “Configuring the remote control password” on page 29.

Installing Novell NetWare device drivers

To install the Advanced System Management device drivers for the Novell NetWare operating system, complete the following steps:

Note: If IBM Netfinity Director, IBM Director, or IBM Netfinity Manager is running on the server, be sure to stop it before proceeding.

1. From a system console session, type one of the following commands:
 - If the installation is from a diskette, type:
LOAD A:\NETWARE\SETUP
(where *A* is the drive letter assigned to your diskette drive).
Press Enter.
 - If the installation is from a CD, type:
LOAD D:\DD\NETWARE\SETUP
(where *D* is the drive letter assigned to your CD-ROM drive).
Press Enter.
2. Follow the instructions that appear in the window.

Continue with “Configuring the remote control password” on page 29.

Installing SCO UnixWare device drivers

Choose one of the following methods to install the SCO UnixWare Advanced System Management device drivers.

Note: If IBM Netfinity Director or IBM Director is running on the server, be sure to stop it before proceeding.

- To use the SCO UnixWare package utility, complete the following steps:
 1. Open a shell prompt.

2. Type:


```
scoadmin
```

 then, press Enter.
3. Click **Application Installer**.
4. Click to access the diskette or the CD-ROM drive (for example, DISK_A or CD-ROM_1); then, install the package file that displays.

Continue with “Configuring the remote control password”.

- Interactive installation from a shell prompt:

Note: The commands in the following steps are case-sensitive.

1. Open a shell prompt.
2. If the installation is from a diskette, type:


```
pkgadd -d diskette1
```
3. If the installation is from a CD, type:

```
pkgadd -d cdrom1
```

Continue with “Configuring the remote control password”.

- Non-interactive installation from a shell prompt:

Note: The commands in the following steps are case-sensitive.

1. Open a shell prompt.
2. If the installation is from a diskette, type:


```
pkgadd -d diskette1 -q-p-n uw7advmg
```
3. If the installation is from a CD, type:

```
pkgadd -d cdrom1 -q-p-n uw7advmg
```

Continue with “Configuring the remote control password”.

Configuring the remote control password

If you want to use the remote control features of the Remote Supervisor Adapter ASM Web interface, you must configure the Remote Control password using the Configuration/Setup Utility program that comes with your server. This program is part of the basic input/output system (BIOS) code.

Note: If you do not want to configure the remote control password, continue with “Completing the installation” on page 30.

To set up a remote control password, complete the following steps:

1. Turn on the server, and watch the monitor screen.
2. When the message Press F1 for Configuration/Setup appears, press F1.
The Configuration/Setup Utility main menu window opens.
3. Use the Up Arrow and Down Arrow keys (↑ and ↓) to select **System Security**; then, press Enter.
The System Security window opens.
4. Select **Remote Control Security Settings**; then, press Enter.
The Remote Control Security Settings window opens.
5. Enter the Remote Control Password that you will use each time you log into the remote control features of the Supervisor Adapter ASM Web Interface.

6. Select **Save New Remote Control Password**; then, press Enter.
7. In the System Security window, press Esc.
8. Select **Save Settings**; then, press Enter.
9. Confirm your selection; then, exit the Configuration/Setup Utility.

Continue with “Completing the installation”.

Completing the installation

To complete the installation of the Remote Supervisor Adapter:

1. If you did not restart the server after installing the ASM device drivers, restart the server now.

Note: You do not need to restart the server if you are running the Windows NT operating system.

2. See the *IBM Remote Supervisor Adapter User's Guide for the xSeries 220* for detailed instructions about completing the configuration of the Remote Supervisor Adapter features. These features include the following:
 - Defining the login IDs and passwords
 - Selecting the events that will receive alert notification
 - Monitoring remote server status using the ASM Web interface or a text-based user interface
 - Remote control of the server

If you want to set up an ASM interconnect network, go to Chapter 4, “Using the ASM interconnect network,” on page 47.

Chapter 3. Installing the adapter in an xSeries 330

Complete the following tasks to install and configure the Remote Supervisor Adapter:

- Task 1. Verify and complete the installation prerequisites (see “Installation requirements” on page 2).
- Task 2. Unpack and verify the components (see “Unpacking and verifying components” on page 6).
- Task 3. Install the Remote Supervisor Adapter in the server (see “Installing the Remote Supervisor Adapter”).
- Task 4. Connect the external power supply (see “Connecting the power-supply adapter” on page 34).
- Task 5. Connect the Ethernet and serial port cables (see “Connecting the LAN and serial port cables” on page 35).
- Task 6. Update the Remote Supervisor Adapter firmware (see “Updating the Remote Supervisor Adapter firmware” on page 37).
- Task 7. Perform the initial configuration to enable remote access to the Remote Supervisor Adapter (see “Configuring your system to enable remote access to the Remote Supervisor Adapter” on page 39). Use this step to:
- Configure the Ethernet settings
 - Configure the serial (COM) port
 - Set up the point-to-point protocol (PPP)
- Task 8. Install the Advanced System Management device drivers, if necessary (see “Installing the Advanced System Management device drivers” on page 45).
- Task 9. Complete the installation (see “Completing the installation” on page 45).
- Task 10. Plan and cable the ASM interconnect network (see “Using the ASM interconnect network” on page 47).

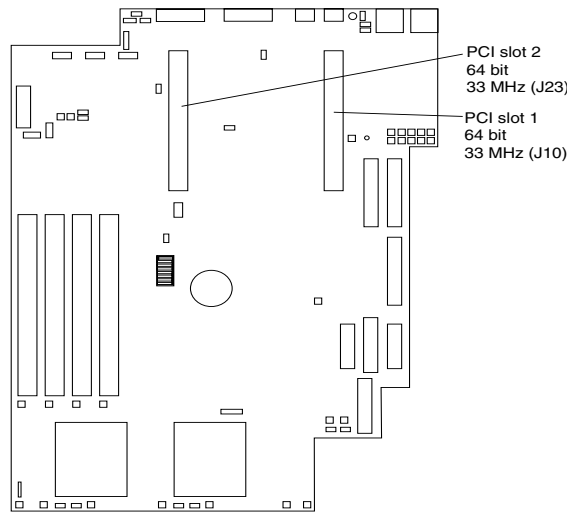
Installing the Remote Supervisor Adapter

Note: The illustrations and procedures in this chapter are specific to the IBM xSeries 330 server.

Attention: When you handle static-sensitive devices, take precautions to avoid damage from static electricity. For details about handling static-sensitive devices, see “Handling static-sensitive devices” on page 5.

Your server comes with riser cards installed in the two peripheral component interconnect (PCI) expansion slots on the system board.

The following illustration shows the location of the 33 MHz PCI expansion slots on the system board.

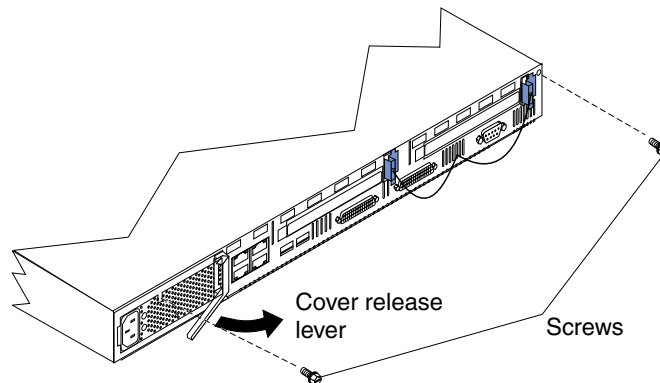


xSeries 330 System Board

To install the Remote Supervisor Adapter, complete the following steps:

1. Review the safety precautions in “Safety” on page iii.
2. Turn off the server and attached devices and disconnect all external cables and power cords.
3. To remove the cover, complete the following steps:
 - a. Remove the server from the rack (if necessary).
 - b. Remove the two screws from the back of the server.
 - c. Pull out on the cover release lever at the back of the server to release the cover.
 - d. Slide the cover back, then up and off the server.

Attention: For proper cooling and airflow, replace the cover before turning on the server. Operating the server for extended periods of time (over 30 minutes) with the cover removed might damage server components.



4. Remove the expansion-slot cover from PCI slot 2. Store it in a safe place for future use.

Attention: Expansion-slot covers must be installed in all vacant slots. This maintains the electronic emission characteristics of the server and ensures proper cooling of server components.

5. Remove the adapter from the static-protective package.

Attention: Avoid touching the components and gold-edge connectors on the adapter.

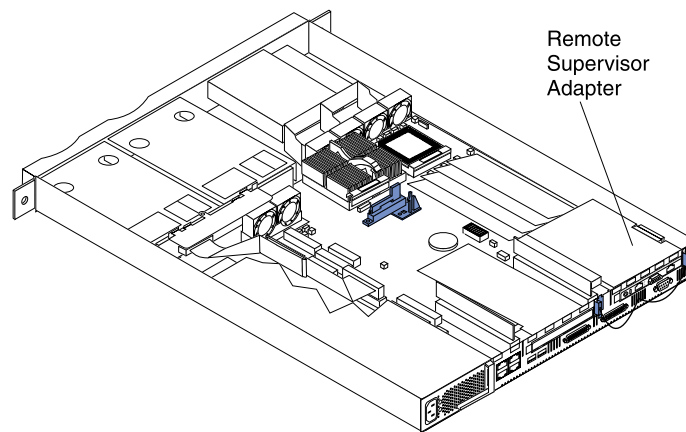
6. Install the adapter as follows:

- a. Carefully grasp the adapter by its top edge or upper corners, and align it with PCI slot 2 connector.

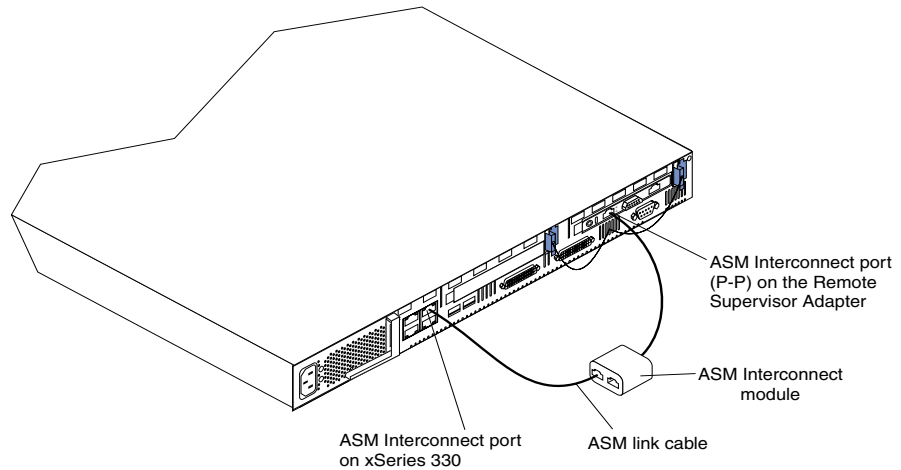
Note: You must install the Remote Supervisor Adapter in PCI slot 2.

- b. Press the adapter firmly into the PCI slot.

Attention: When you install the adapter in the server, be sure that it is completely and correctly seated in the connector before you apply power. Incomplete insertion might cause damage to the system board or the adapter.



7. Replace the cover on the server; then, reinstall the server in the rack (if applicable) and connect all external cables.
8. Connect the ASM Interconnect module to the Remote Supervisor Adapter using the ASM Interconnect port (P-P port) that is located on the adapter.



9. Turn on the server.

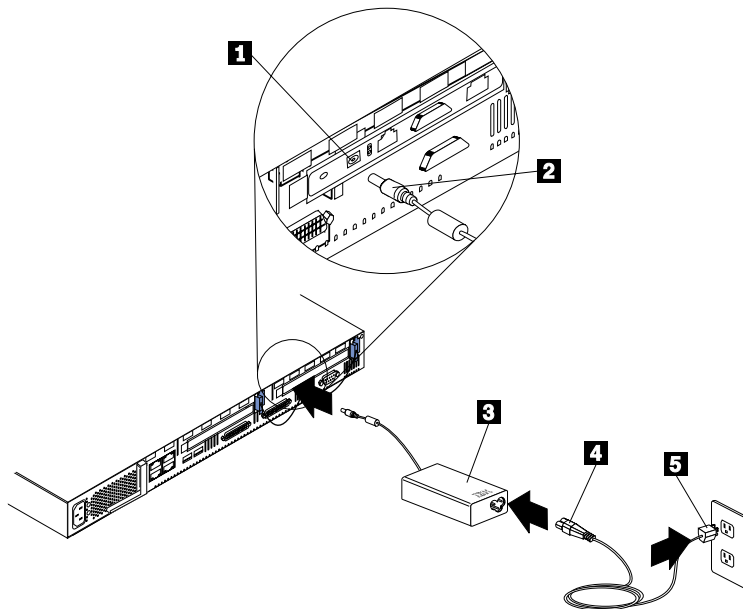
Continue with “Connecting the power-supply adapter”.

Connecting the power-supply adapter

You must attach the power-supply adapter that comes with the Remote Supervisor Adapter. After you connect the power supply adapter to the Remote Supervisor Adapter, you can use the power cord to connect the power supply adapter to a properly grounded electrical outlet or use the universal power cord (comes with the Remote Supervisor Adapter) to connect the power supply adapter to a power distribution unit (PDU) or to an uninterruptible power supply (UPS).

To connect the power-supply adapter and power cord, complete the following steps:

1. From the power-supply adapter **3**, connect the power-supply control cable **2** to the power-supply adapter connector on the Remote Supervisor Adapter **1**.



2. Connect one end of the power cord **4** to the connector on the power supply adapter **3**.
3. Connect the other end of the power cord **5** to a properly grounded electrical outlet.

Note: Alternately, you can connect one end of the universal power cord to the power supply adapter; then, connect the other end to a power distribution unit (PDU) or to an uninterruptible power supply (UPS).
4. Make sure that the Remote Supervisor Adapter power LED is green. For the location of the power LED, see the illustration in “Cabling the Ethernet LAN port” on page 36.

Continue with “Connecting the LAN and serial port cables”.

Connecting the LAN and serial port cables

You can manage your server remotely using the connections and user interfaces that are described in Table 3. Choose the interface method you want to use to perform remote management; then, perform the indicated cabling procedure.

If you plan to set up an ASM interconnect network, go to Chapter 4, “Using the ASM interconnect network,” on page 47 for instructions about cabling the ASM interconnect port and setting up the network. Then, return here to continue the cabling procedures.

Table 3. Cabling tasks to enable remote access to the Remote Supervisor Adapter.

User interface to Remote Supervisor Adapter	Connection to Remote Supervisor Adapter	For the cabling procedure, see:
ASM Web interface using the HTTP protocol	LAN using the Ethernet port	“Cabling the Ethernet LAN port” on page 36
Text-based user interface using the TELNET protocol		

Table 3. Cabling tasks to enable remote access to the Remote Supervisor Adapter.

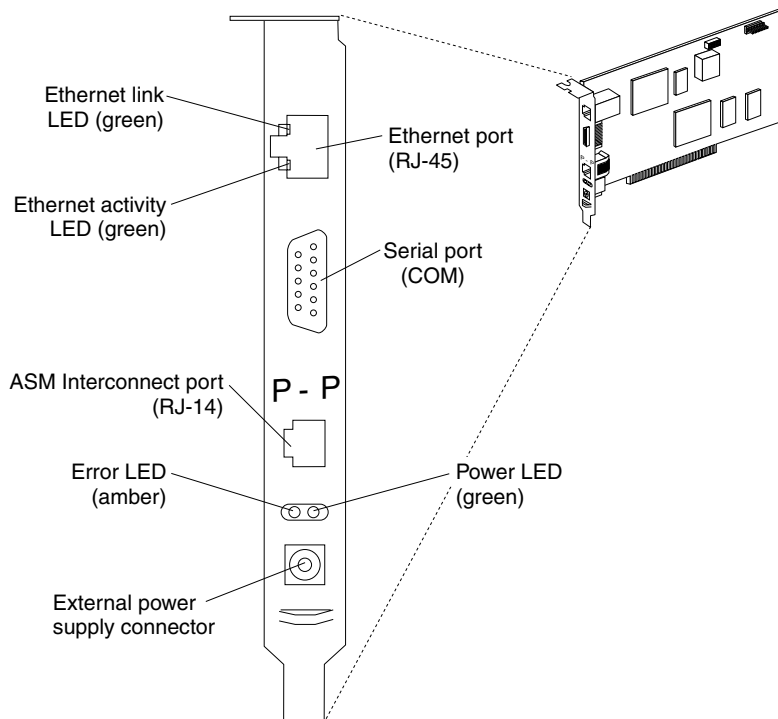
User interface to Remote Supervisor Adapter	Connection to Remote Supervisor Adapter	For the cabling procedure, see:
Text-based user interface using a modem or a null modem	Serial (COM) port	"Cabling the serial (COM) port" on page 37
ASM Web interface using point-to-point (PPP) protocol		
Text-based user interface using the TELNET protocol over PPP		

Cabling the Ethernet LAN port

To attach the Ethernet cables, complete the following steps.

Attention: To avoid damage to the Ethernet connector on the Remote Supervisor Adapter, do not plug the ASM Interconnect module into the Ethernet (RJ-45) port.

1. Connect one end of a Category 5 Ethernet cable to the Ethernet port on the Remote Supervisor Adapter. Connect the other end of the Ethernet cable to your network.
2. Check the Ethernet LEDs. The location of the LEDs is shown in the following illustration.



Ethernet link

The green Ethernet link LED is lit when the Ethernet cable is connected properly.

Ethernet activity

The green Ethernet activity LED is flashing when there is Ethernet activity.

If you plan to use the serial port connection, continue with “Cabling the serial (COM) port”; otherwise, go to “Updating the Remote Supervisor Adapter firmware”.

Cabling the serial (COM) port

To cable the serial (COM) port, connect a modem or null modem cable to the serial port on the Remote Supervisor Adapter.

Continue with “Updating the Remote Supervisor Adapter firmware”.

Updating the Remote Supervisor Adapter firmware

You can use the IBM Remote Supervisor Utility program to check the firmware level on the Remote Supervisor Adapter and to update the firmware. This Utility program is a DOS utility on the *IBM Remote Supervisor Adapter Support* CD that comes with the Remote Supervisor Adapter. You can obtain the latest firmware code from the IBM Support Web site, <http://www.ibm.com/pc/support>.

After you initially configure the Remote Supervisor Adapter to enable remote access through a Web connection, you can update the Remote Supervisor Adapter firmware using the ASM Web interface. The procedures to initially configure the Remote Supervisor Adapter for remote access are described later in this chapter.

For information about using the ASM Web interface to monitor your server, see the *IBM Remote Supervisor Adapter User's Guide for the xSeries 330*, which is available in Adobe Acrobat Portable Document Format (PDF) on the *IBM Documentation* CD.

To update the Remote Supervisor Adapter firmware, complete the following steps:

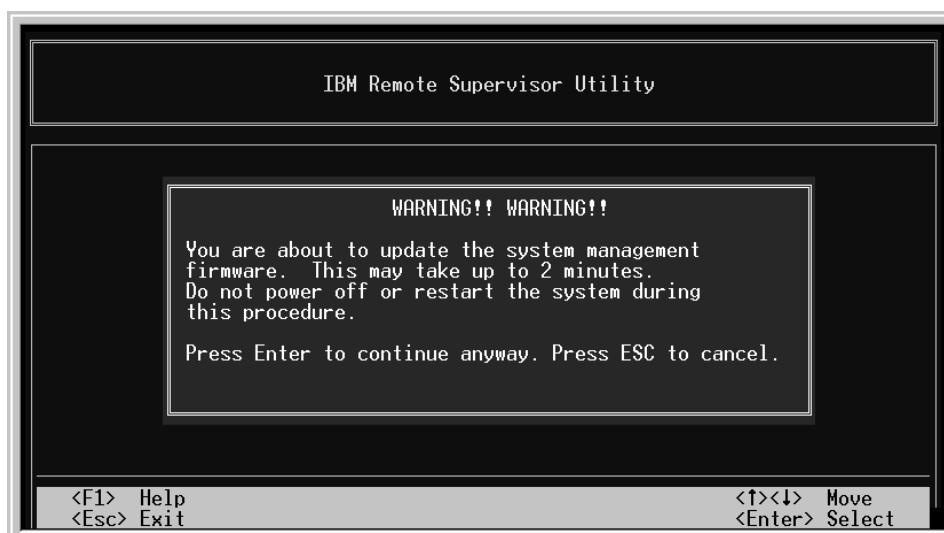
1. Turn on the server.
2. Insert the *IBM Remote Supervisor Adapter Support* CD into the CD-ROM drive and close the CD-ROM drive before the server completes power-on self-test (POST).

Note: If you do not insert the CD and close the CD-ROM drive before POST completes, you must restart the server with the CD in the CD-ROM drive.

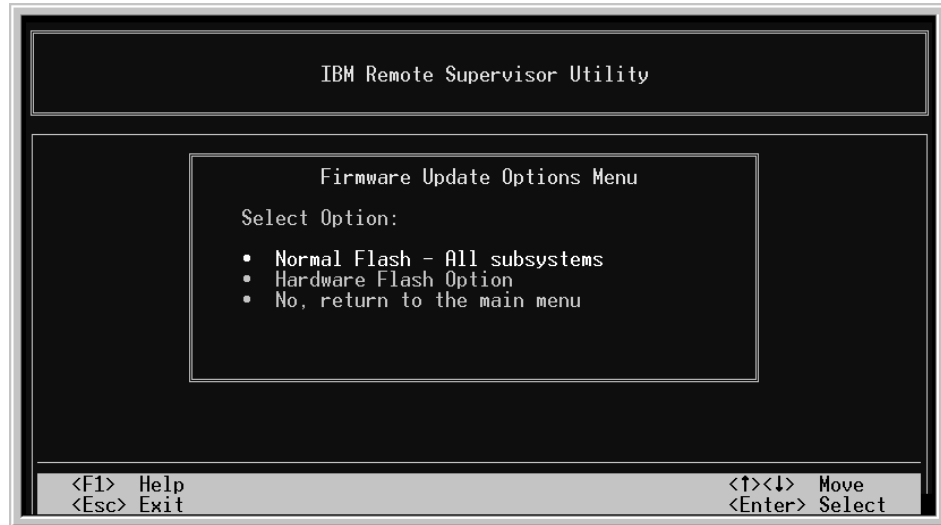
3. The CD starts automatically and the IBM Remote Supervisor Utility window opens.



4. Use the Up Arrow and Down Arrow keys (↑ and ↓) to select **Update System Management Firmware**; then, press Enter. A warning window opens.
5. Press Enter to continue. The Firmware Update Options Menu window opens.



6. Use the arrow keys to select **Normal Flash - All subsystems**; then, press Enter.



7. The Firmware Update Status window opens and displays a message to confirm you want to update the firmware. Press Enter. The system updates the Remote Supervisor Adapter firmware.
8. When the Remote Supervisor Adapter firmware update process is complete, press Enter to return to the Utility program main window.

Continue with “Configuring your system to enable remote access to the Remote Supervisor Adapter”.

Configuring your system to enable remote access to the Remote Supervisor Adapter

The Remote Supervisor Adapter requires initial configuration to enable remote access through the Ethernet and serial ports. From Table 4, choose the interface method that you want to use to perform remote management; then, perform the indicated configuration procedure.

Table 4. Configuration tasks to enable remote access to the Remote Supervisor Adapter.

User interface to Remote Supervisor Adapter	Connection to Remote Supervisor Adapter	For the configuration procedure, see:
ASM Web interface using the HTTP protocol	LAN using the Ethernet port	“Configuring the Ethernet settings” on page 40
Text-based user interface using the TELNET protocol		
Text-based user interface using a modem or a null modem	Serial (COM) port	“Configuring the serial port” on page 42 and “Setting up point-to-point protocol” on page 43
ASM Web interface using point-to-point (PPP) protocol		
Text-based user interface using the TELNET protocol over PPP		

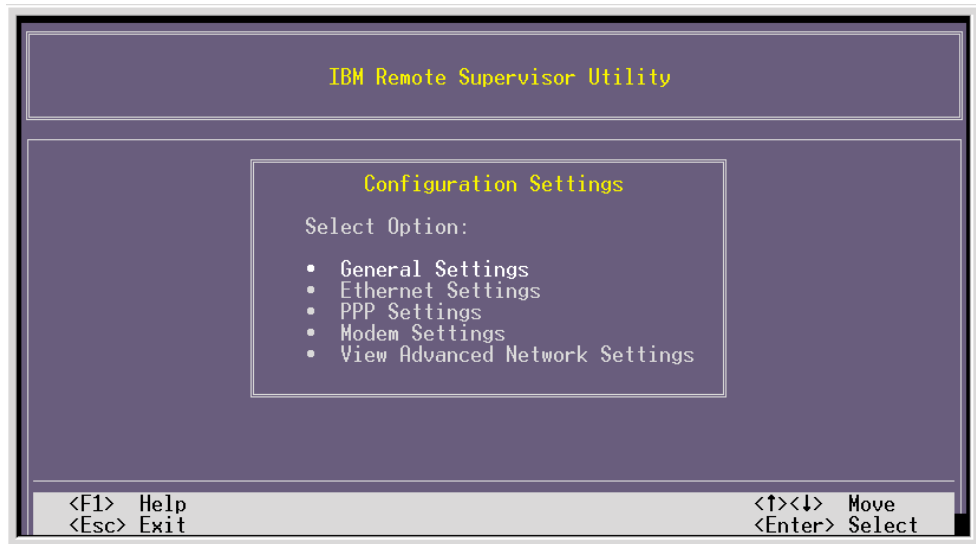
For detailed information about using the ASM Web interface and the text-based user interface, see the *IBM Remote Supervisor Adapter User's Guide for the xSeries 330*.

Configuring the Ethernet settings

If you have an accessible, active, and configured dynamic host configuration protocol (DHCP) server on your network, the hostname, IP address, gateway address, subnet mask, and DNS server IP address are set automatically. You do not need to perform further configuration tasks to enable the Ethernet connection because the default value for the **DHCP Setting** field is Enabled. If you need to configure the serial port, go to “Configuring the serial port” on page 42; otherwise, go to “Completing the installation” on page 45.

If you do not have a DHCP server on your network, complete the following steps to configure the Ethernet port:

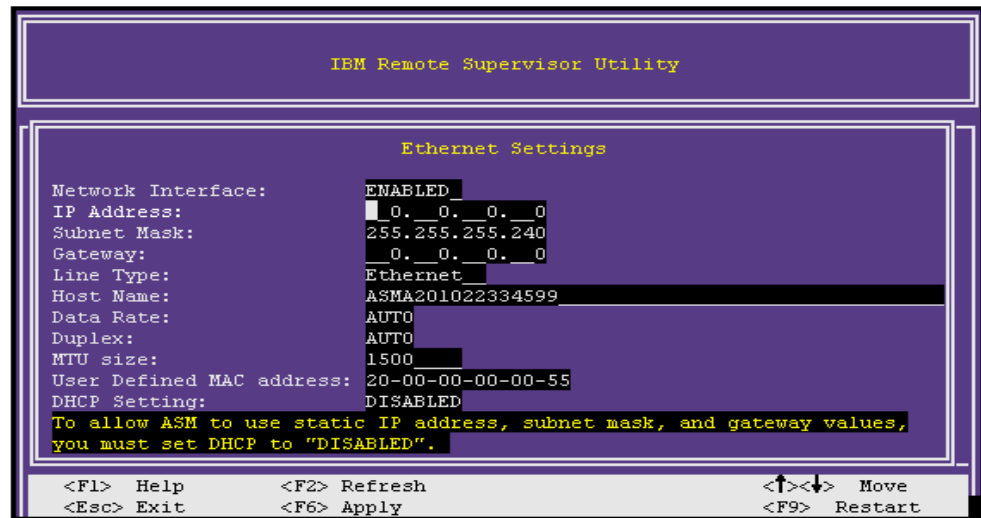
1. If you completed the update firmware procedure and the Utility program main window is open, go to step 4; otherwise, continue with step 2.
2. Turn on the server.
3. Insert the *IBM Remote Supervisor Adapter Support* CD into the CD-ROM drive and close the CD-ROM drive before the server completes POST. The CD starts automatically and the IBM Remote Supervisor Utility window opens.
Note: If you do not insert the CD and close the CD-ROM drive before POST completes, you must restart the server with the CD in the CD-ROM drive.
4. Use the Up Arrow and Down Arrow keys (↑ and ↓) to select **Configuration Settings**; then, press Enter. The Configuration Settings window opens.



- Use the arrow keys to select **Ethernet Settings**; then, press Enter.

The Ethernet Settings window opens.

Note: The values in the following window are only examples; your settings will be different.



- Use the arrow keys to navigate to each field. Your system administrator can provide the information for the following fields:

Network Interface

The default value is Enabled; verify that it is still set to Enabled.

IP Address

Type the IP address of the Remote Supervisor Adapter.

Subnet Mask

Type the subnet mask used by the Remote Supervisor Adapter. The default value is 255.255.255.0.

Gateway Type your network gateway router.

Host Name

Type the IP hostname of the Remote Supervisor Adapter. The default hostname is ASMA<burned-in MAC address>.

For detailed information about the Ethernet settings, see the *IBM Remote Supervisor Adapter User's Guide for the xSeries 330*.

7. You must change the DHCP Setting field to **Disabled**. The default value is Enabled.
8. Press F6 to apply the change.
9. Press Esc. In the Warning window that opens, press Enter to restart the Remote Supervisor Adapter.
10. Press Esc to return to the Configuration Settings window.
11. If you need to configure the serial port, go to "Configuring the serial port"; otherwise, continue with step 12.
12. Press Esc to return to the Utility program main window.
13. Use the arrow keys to select **Exit Utility** from the menu or press Esc to close the Utility program.
14. Remove the CD from the CD-ROM drive. The Remote Supervisor Adapter restarts automatically.

Continue with "Completing the installation" on page 45.

Configuring the serial port

To configure the Remote Supervisor Adapter serial port for access using a modem or null modem, complete the following steps:

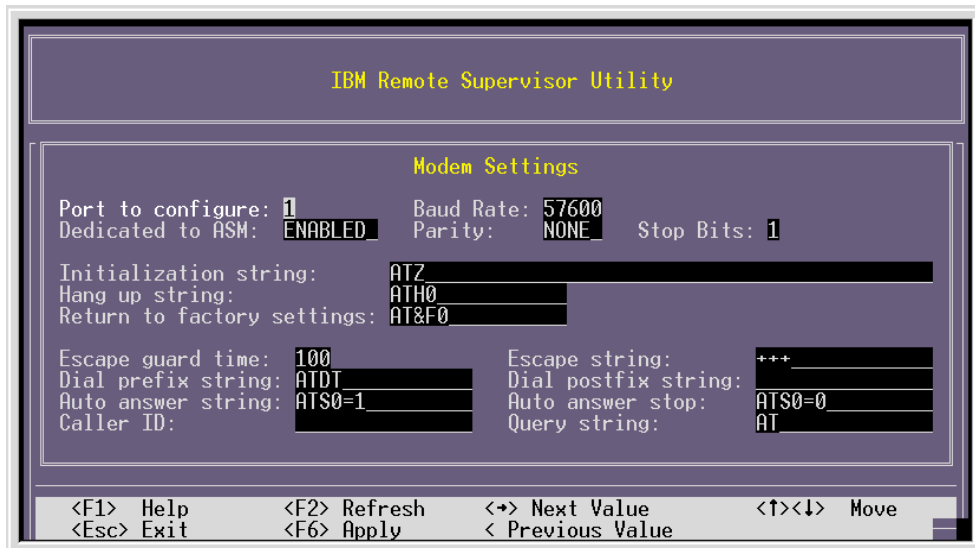
1. If you completed the procedure for configuring the Ethernet port and the Configuration Settings window is open, go to step 5; otherwise, continue with step 2.
2. Turn on the server.
3. Insert the *IBM Remote Supervisor Adapter Support* CD into the CD-ROM drive and close the CD-ROM drive before the server completes POST. The CD starts automatically and the IBM Remote Supervisor Utility window opens.

Note: If you do not insert the CD and close the CD-ROM drive before POST completes, you must restart the server with the CD in the CD-ROM drive.

4. Use the Up Arrow and Down Arrow keys (↑ and ↓) to select **Configuration Settings**; then, press Enter. The Configuration Settings window opens.
5. Use the arrow keys to select **Modem Settings**; then, press Enter.

The Modem Settings window opens.

Note: The values in the following window are only examples; your settings will be different.



6. Verify the following serial port values:

Baud Rate

The default is 57600. Make sure that the baud rate matches the baud rate of the device you are connecting to the serial port on the Remote Supervisor Adapter.

Parity

The default is None.

Stop Bits

The default is 1.

Note: The data bits value is preset to 8 and cannot be changed.

For detailed information about the serial port and modem settings, see the *IBM Remote Supervisor Adapter User's Guide for the xSeries 330*.

7. If you make changes to the serial port settings, press F6 to apply the changes.
8. Press Esc to return to the Configuration Settings window.
9. If you need to set up PPP, go to "Setting up point-to-point protocol"; otherwise, continue with step 10.
10. Press Esc to return to the Utility program main window.
11. Use the arrow keys to select **Exit Utility** from the menu or press Esc to close the Utility program.
12. Remove the CD from the CD-ROM drive. The Remote Supervisor Adapter restarts automatically.

Continue with "Setting up point-to-point protocol".

Setting up point-to-point protocol

The Remote Supervisor Adapter serial port supports point-to-point protocol (PPP). The PPP enables TCP/IP communication over the serial port, which enables Web-based management and TELNET sessions over a modem.

To set up PPP, complete the following steps:

1. If you completed the procedure for configuring the serial port and the Configuration Settings window is open, go to step 6; otherwise, continue with step 2.
2. Turn on the server.
3. Insert the *IBM Remote Supervisor Adapter Support* CD into the CD-ROM drive and close the CD-ROM drive before the server completes POST.

Note: If you do not insert the CD and close the CD-ROM drive before POST completes, you must restart the server with the CD in the CD-ROM drive.

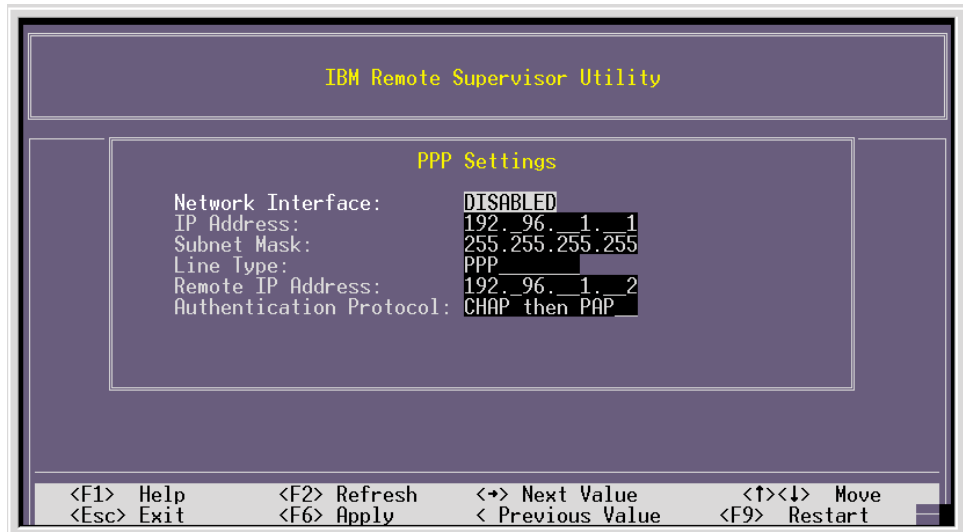
4. The CD starts automatically and the IBM Remote Supervisor Utility window opens.
5. Use the Up Arrow and Down Arrow keys (↑ and ↓) to select **Configuration Settings**; then, press Enter.

The Configuration Settings window opens.

6. Use the arrow keys to select **PPP Settings**; then, press Enter.

The PPP Settings window opens.

Note: The values in the following windows are only examples; your settings will be different



7. Use the arrow keys to navigate to each field. Verify the values in the following fields:

Network Interface

The default is Disabled. Change this field to Enabled.

IP Address

The default value is 192.96.1.1. Make sure that the client is configured to allow the server to assign this IP Address.

Subnet Mask

The default value is 255.255.255.255.

Line Type

The default is PPP.

Remote IP Address

The default value is 192.96.1.2.

Authentication Protocol

The default is CHAP then PAP. Make sure that the value in this field matches your client settings.

For detailed information about the PPP settings, see the *IBM Remote Supervisor Adapter User's Guide for the xSeries 330*.

8. Press F6 to apply the changes.
9. Press Esc to return to the Configuration Settings window.
10. Press Esc to return to the Utility program main window.
11. Use the arrow keys to select **Exit Utility** from the menu or press Esc to close the Utility program.
12. Remove the CD from the CD-ROM drive. The Remote Supervisor Adapter restarts automatically.

Continue with "Completing the installation".

Installing the Advanced System Management device drivers

Installing the Advanced System Management device drivers is necessary only if you want to install the latest version of ASM device drivers for the xSeries 330 when you install the Remote Supervisor Adapter. You can install the Remote Supervisor Adapter in the xSeries 330 without updating the device drivers.

To install the latest version of device drivers for your xSeries 330, see the IBM Support Web site at <http://www.ibm.com/pc/support/>. You can also see "Installing the Advanced System Management device drivers" on page 25 for additional information. The ASM device drivers might be installed on the xSeries 330 if you used ServerGuide 6.0.3 when you initially installed the operating system.

If you installed new device drivers, you might want to restart the server now.

Note: You do not need to restart the server if you are running the Windows NT operating system.

Completing the installation

See the *IBM Remote Supervisor Adapter User's Guide for the xSeries 330* for detailed instructions about completing the configuration of the Remote Supervisor Adapter features. These features include the following:

- Defining the login IDs and passwords
- Selecting the events that will receive alert notification
- Monitoring remote server status using the ASM Web interface or a text-based user interface

If you want to set up an ASM interconnect network, continue to Chapter 4, "Using the ASM interconnect network," on page 47.

Chapter 4. Using the ASM interconnect network

This chapter includes information about how to configure and connect your server to function within an ASM interconnect network.

Your ASM interconnect network can include as many as 12 individual ASM connections in a single bus. These connections can include Remote Supervisor Adapters, ASM processors, and ASM PCI Adapters. After your clients and servers are connected, they use the ASM interconnect network to share ASM resources, information, and alerts among multiple servers, without having to add additional communications hardware or network interface adapters.

An ASM interconnect network provides two levels of functionality. First, the ASM interconnect network enables you to use information managed by Remote Supervisor Adapters, ASM processors, and ASM PCI Adapters, to configure settings and to control the servers where other Remote Supervisor Adapters, ASM processors, and ASM PCI Adapters on your network reside. Secondly, the ASM interconnect network enables other interconnect network devices to use the resources (Ethernet or modem) of other Remote Supervisor Adapters, ASM processors, and ASM PCI Adapters in the ASM interconnect network for sending alerts. This functionality is used when Remote Supervisor Adapters, ASM processors, or ASM PCI Adapters cannot send an alert and must forward the information to another Remote Supervisor Adapter, ASM processor, or ASM PCI Adapter to send the alert.

Planning and cabling your interconnect network

To support the most recent ASM features, a Remote Supervisor Adapter must be the main gateway interconnect to your ASM interconnect bus, if the bus also includes servers with ASM PCI adapters or ASM processors. The Remote Supervisor Adapter forwards the ASM information generated by the servers attached to the ASM interconnect bus to other servers on your Ethernet network. The connected ASM processors and ASM PCI Adapters are managed through the new user interface and Web browser access of the Remote Supervisor Adapter.

Note: To ensure the stability of your system, be sure to have the latest level of firmware installed on the Remote Supervisor Adapter that is the main interconnect gateway for the ASM interconnect network. The latest level of firmware is available on the IBM Support Web site at <http://www.ibm.com/support>.

You must connect an ASM Interconnect module to the Remote Supervisor Adapter and on each of the servers that you plan to connect to the ASM interconnect network bus. If your server has an integrated RS-485 ASM interconnect port (the xSeries 330 server has an integrated ASM interconnect port) you do not need to install an ASM Interconnect module between servers. However, you still need to install an ASM Interconnect module to connect the Remote Supervisor Adapter to the ASM processor.

To connect your servers, note the following setup and configuration considerations:

- Make sure that the ASM interconnect network is set up as a bus, not as a ring. You must connect the servers to the ASM interconnect network in a series, with terminated beginning and end points.
- Make sure that the total combined length of all Ethernet cables connecting the server in the ASM interconnect network does not exceed 91.4 M (300 ft).
- Each Remote Supervisor Adapter, ASM PCI adapter, or ASM processor that is connected to the ASM interconnect network bus counts as one connection. For

example, if an ASM PCI adapter is installed in a server that has an ASM processor, the processor and the adapter are connected to each other using one ASM interconnect connection but the processor and the adapter count as two connections on the ASM interconnect network bus.

- Be sure that the latest level of firmware is installed on the Remote Supervisor Adapter that is the gateway for the interconnect network. For more information on updating firmware, see “Updating the Remote Supervisor Adapter firmware” on page 17.

Forwarding alerts

Remote Supervisor Adapters, ASM PCI adapters, and ASM processors that are connected to an ASM interconnect network share resources and system-management information. This section provides information on how alerts are forwarded in the ASM interconnect network.

During normal operation, each Remote Supervisor Adapter, ASM processor, or ASM PCI adapter on the ASM interconnect network communicates with the other processors and adapters on the network. Processors or adapters that have a modem or Ethernet connection notify the other processors and adapters that these communications resources are available for use by other servers on the ASM interconnect network. These resources are then used as ASM interconnect network resources, enabling Remote Supervisor Adapters, ASM processors, or ASM PCI adapters on the ASM interconnect network to send alerts using a modem or the network, even if they do not have a modem or network connection physically attached.

When alerts are generated, they are forwarded to the Remote Supervisor Adapter, ASM processor, or ASM PCI adapter on the ASM interconnect network that has the communication resources to forward the alert. If no system on the ASM interconnect network meets the requirements, the alert is set for transmission if the connection type is configured or becomes available later.

If multiple modems or multiple network connections exist in the ASM interconnect network, you cannot specify which system will receive an alert or which will use its modem or network connection to forward the alert. If an alert is forwarded to another Remote Supervisor Adapter, ASM processor, or ASM PCI adapter that is unable to deliver the alert (for example, the modem it is configured to use has failed or the network cannot resolve the destination IP address), the processor or adapter attempts to forward the alert to another system on the ASM interconnect network that has the communication resources to forward the alert.

Alerts are typically sent only once (per connection type), but the alert is forwarded to another interconnect device if the resource exists on other interconnect devices in the network. For example, on a 3 ASM processor network where ASM processor 1 generates a modem alert, but does not have a modem and the remaining ASM processors have modems, the following might occur:

- If ASM processor 1 generates the alert and sends it to ASM processor 2 to send, and the dial-out on ASM processor 2 fails, the alert is not forwarded to ASM processor 3. This might happen if the modem is connected to ASM processor 2 but the modem cannot obtain a dial tone.
- If ASM processor 1 generates an alert and if within a 45 second window, prior to the ASM processor 1 generating the alert, the modem is unplugged from ASM processor 2, ASM processor 1 forwards the alert to ASM processor 2 (since ASM processor 1 “thinks” ASM processor 2 has an available modem). When ASM processor 2 receives the forwarded alert, it determines that a modem is attached and forwards the alert to ASM processor 3. Therefore, depending upon the time

frame (45 seconds) within which a resource (modem) fails, the alert might be forwarded multiple times until an interconnect device can send the alert.

Cabling for the ASM interconnect network

Use this procedure to cable for the ASM interconnect network. Depending upon the servers you have, you might need additional ASM Interconnect modules or CAT 5 or CAT 3 Ethernet cables. This table lists some of the IBM Netfinity and IBM xSeries products and indicates if you need to use an ASM Interconnect module to set up the ASM interconnect network.

Table 5. ASM interconnect network server list.

Server Name	ASM Interconnect module needed
xSeries 220	yes
Netfinity® 5000	yes
Netfinity 5500	yes
Netfinity 5500-M10	yes
Netfinity 5500-M20	yes
Netfinity 5600 or xSeries 240	yes
Netfinity 4500R or xSeries 340	yes
xSeries 330	no
Netfinity 6000R or xSeries 350	no
Netfinity 7600	no
Netfinity 7100	no

For additional information about installing the ASM Interconnect module in the xSeries 220 and the xSeries 330, see “Connecting the ASM Interconnect module to the xSeries 220” or “Connecting the ASM Interconnect module to the xSeries 330” on page 50.

Connecting the ASM Interconnect module to the xSeries 220

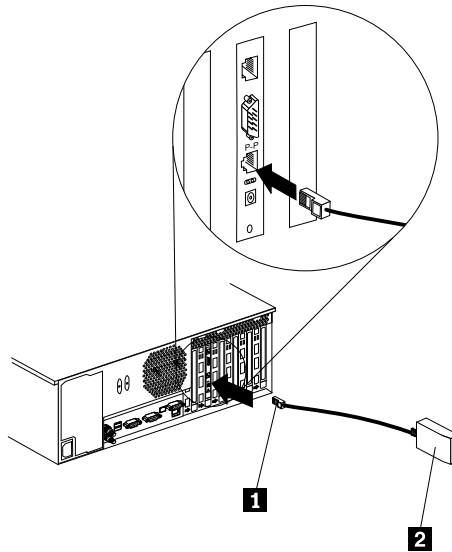
The ASM Interconnect module connects the Remote Supervisor Adapter to the ASM interconnect network. This module comes with the Remote Supervisor Adapter option.

To connect the ASM Interconnect cable to the Remote Supervisor Adapter, complete the following steps.

Attention: To avoid damage to the Ethernet connector, do not plug the ASM Interconnect cable into the Ethernet (RJ-45) port.

1. Connect the ASM Interconnect module **1** to the Remote Supervisor Adapter ASM Interconnect port. This port has a P – P (for peer-to-peer) above it, on the back panel of the adapter.

Note: The following illustration shows a Remote Supervisor Adapter installed in an xSeries 220 server.



2. Connect one or two CAT 3 or CAT 5 Ethernet cables to the other end of the ASM Interconnect module **2**.

Go to “ASM interconnect network configuration examples” on page 52.

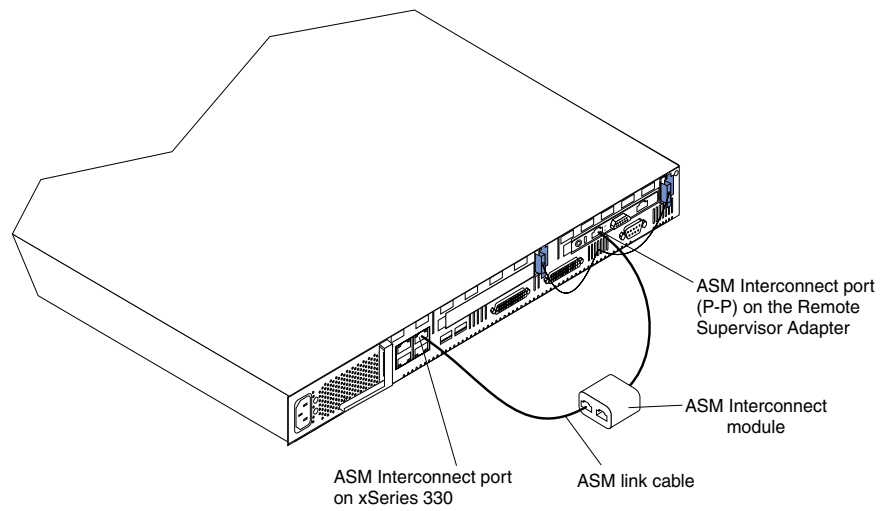
Connecting the ASM Interconnect module to the xSeries 330

The ASM Interconnect module connects the Remote Supervisor Adapter to the ASM interconnect network. This module comes with the Remote Supervisor Adapter option. For detailed instructions about installing the ASM Interconnect module on servers with ASM processors and ASM PCI adapters, see the documentation that comes with those devices.

To connect the ASM Interconnect module to the Remote Supervisor Adapter, complete the following steps.

1. Connect the ASM Interconnect module to the Remote Supervisor Adapter ASM Interconnect port.

Note: The following illustration shows a Remote Supervisor Adapter installed in an xSeries 330 server.



2. Connect one end of the ASM link cable (Cat 5 or 3 Ethernet cable) to the RS-485 port on the rear of the panel of the server.
3. Connect the other end of the ASM link cable to the ASM Interconnect module.

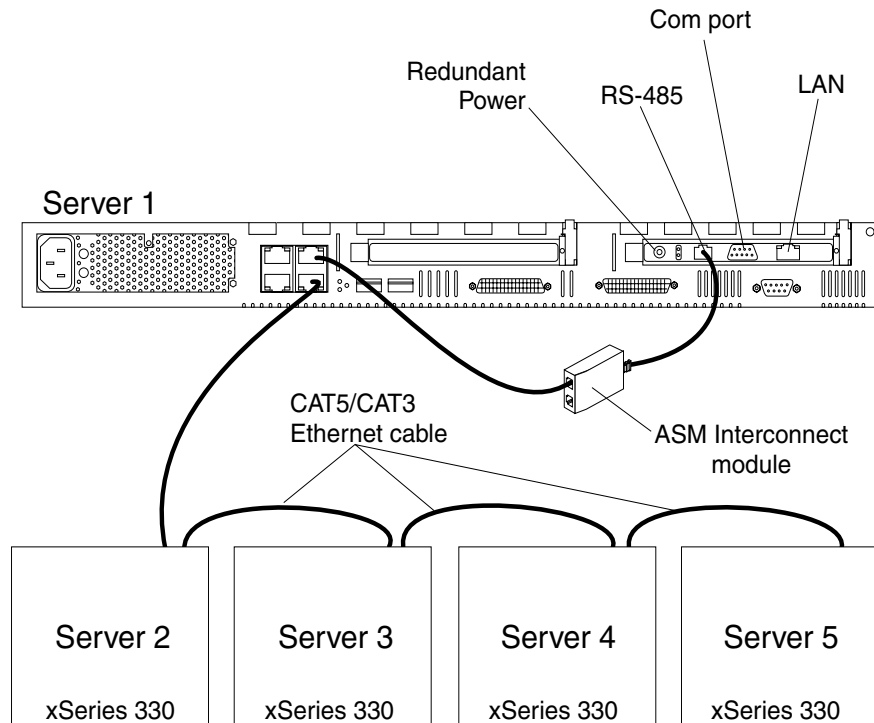
Go to “ASM interconnect network configuration examples” on page 52.

ASM interconnect network configuration examples

The illustrations in this section show sample ASM interconnect network configurations.

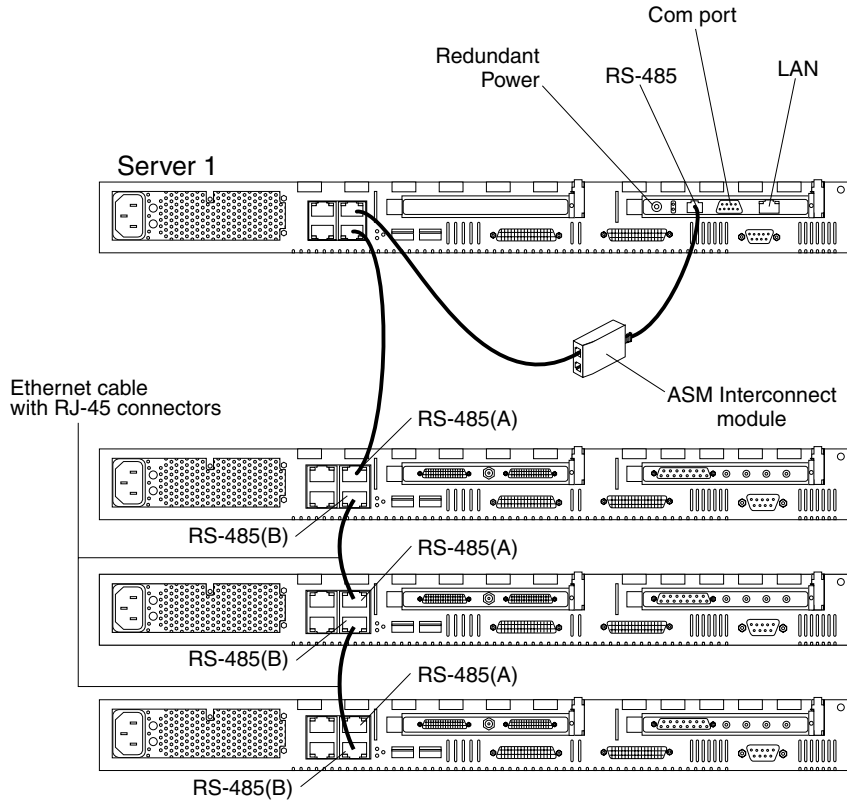
In the following example, a Remote Supervisor Adapter is installed in an xSeries 330. The xSeries 330 with the Remote Supervisor Adapter will act as the gateway to the interconnect network, forwarding system-management data generated by the other systems in the ASM interconnect network bus to the system-management administration system that is connected to the network. This is an environment that is using all xSeries 330 servers.

Note: You might need to obtain additional cables or connectors to set up the ASM interconnect network.



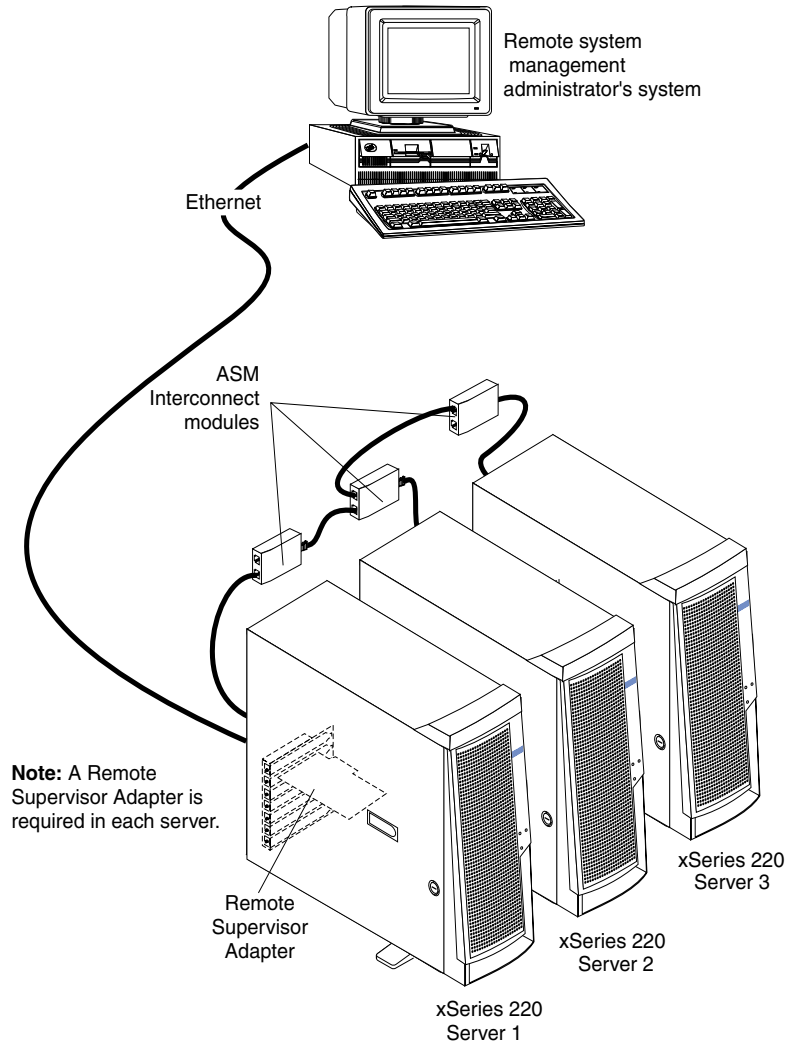
Note: There are no Remote Supervisor Adapters installed in servers 2 through 5.

In the following example, a Remote Supervisor Adapter is installed in an xSeries 330. This view shows the top server in a rack of xSeries servers with a Remote Supervisor Adapter installed. The xSeries 330 with the Remote Supervisor Adapter will act as the gateway to the interconnect network, forwarding system-management data generated by the other systems in the ASM interconnect network bus to the system-management administration system that is connected to the network. This is an environment that is using all xSeries 330 servers.



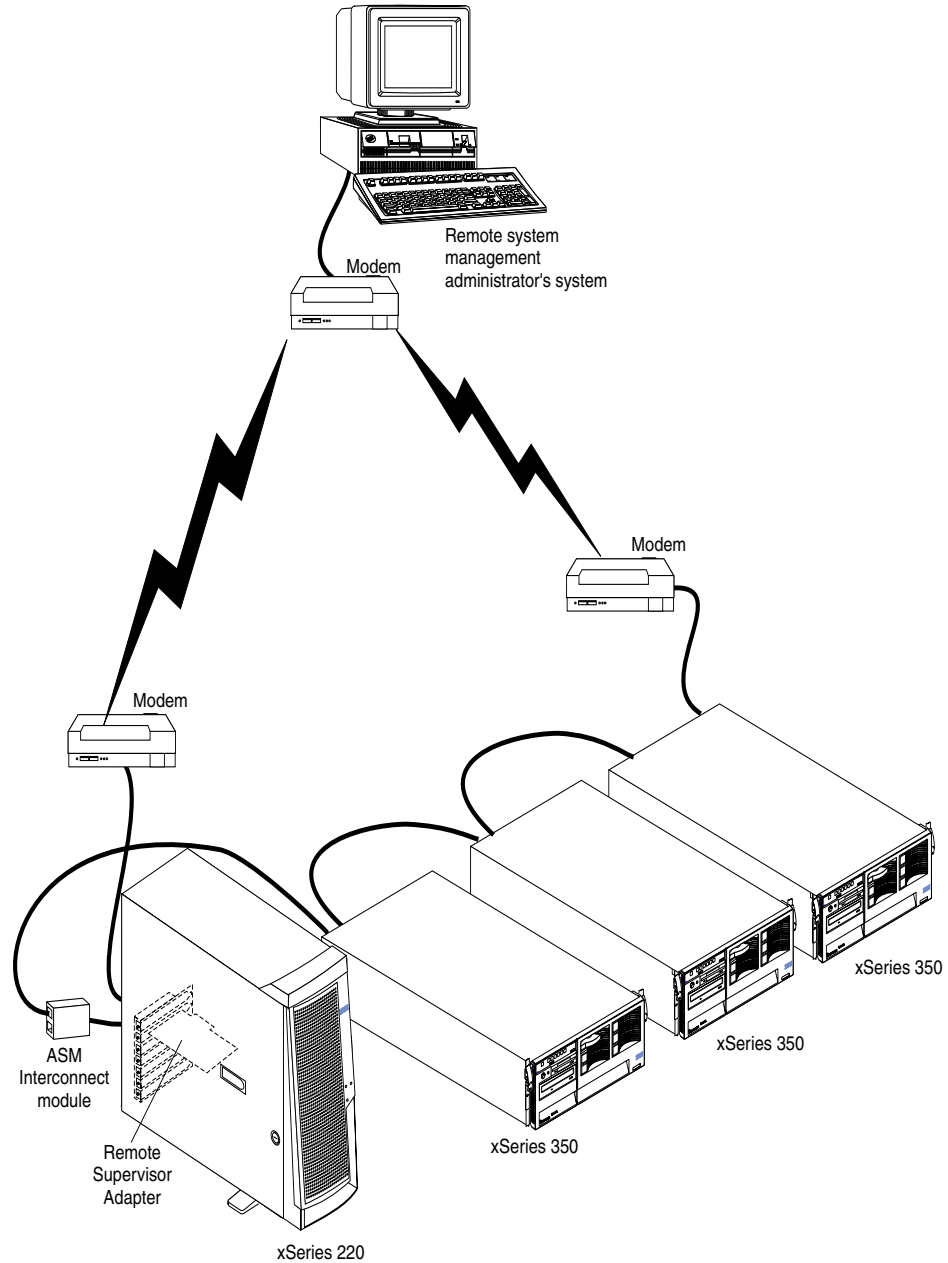
Note: The Remote Supervisor Adapter is installed in Server 1.

In the following example, an Ethernet cable is connected to the Remote Supervisor Adapter that is installed in an xSeries 220. In this case, the xSeries 220 uses the LAN connection to forward system-management data generated by the other servers in the ASM interconnect network bus to the remote system-management administrator.



Note: The ASM Interconnect module is attached to the RS-485 P-P (peer to peer) port on the back panel of the Remote Supervisor Adapter in each server.

In the following example, one modem is connected to the Remote Supervisor Adapter, one modem is connected to the ASM PCI adapter that is included with the servers that are connected at each end of the ASM interconnect network bus, and one modem is connected to the Remote system-management administrator's system. Placing modems at opposite ends of the ASM interconnect network bus ensures that if an ASM interconnect connection in the bus fails, all of the systems on the ASM interconnect network have access to a modem to forward system-management data to the remote system-management administrator. This is an environment with different models of servers.



Appendix A. Getting help, service, and information

If you need help, service, technical assistance, or just want more information about IBM products, you will find a wide variety of sources available from IBM to assist you.

With the original purchase of an IBM hardware product, you have access to extensive support coverage. During the IBM hardware product warranty period, you may call the IBM Personal Computer HelpCenter (1-800-772-2227 in the U.S.) for hardware product assistance covered under the terms of the IBM Statement of Limited Warranty.

The following services are available during the warranty period:

- Problem Determination - Trained personnel are available to assist you with determining if you have a hardware problem and deciding what action is necessary to fix the problem.
- IBM Hardware Repair - If the problem is determined to be caused by IBM hardware under warranty, trained service personnel are available to provide the applicable level of service.
- Engineering Change Management - Occasionally, there might be changes that are required after a product has been sold. IBM or your reseller, if authorized by IBM, will make Engineering Changes (ECs) available that apply to your hardware.

Be sure to retain your proof of purchase to obtain warranty service. Refer to the IBM hardware warranty for a full explanation of IBM's warranty terms.

Please have the following information ready when you call:

- Machine type and model
- Serial numbers of your IBM hardware products
- Description of the problem
- Exact wording of any error messages
- Hardware and software configuration information

On the World Wide Web, the IBM Personal Computing Web site has up-to-date information about IBM Personal Computer products and support.

Some helpful addresses are:

Table 1. IBM Personal Computing Web sites.

World Wide Web site Address	Description
http://www.ibm.com	Main IBM home page
http://www.ibm.com/pc	IBM Personal Computing
http://www.ibm.com/pc/support	IBM Personal Computing Support
http://www.ibm.com/pc/us/accessories	Options by IBM (U.S.)
http://www.ibm.com/pc/us/eserver/xseries	IBM xSeries Servers (U.S.)
http://www.ibm.com/pc/techconnect	IBM TechConnect®

You can select a country-specific Web site from these pages.

If you select Profile from the support page, you can create a customized support page that is specific to your hardware, complete with Frequently Asked Questions, Parts Information, Technical Hints and Tips, and Downloadable Files. You will have the information you need, all in one place. In addition, you can choose to receive e-mail notifications whenever new information becomes available about your registered products. You can also access online support forums, which are community sites monitored by IBM support staff.

Appendix B. Product warranties and notices

This chapter contains warranty and emission notices. It also contains trademarks and general-information notices.

Warranty Information

Warranty Period

Machine - IBM Remote Supervisor Adapter

Warranty Period* - Three Years

** Contact your place of purchase for warranty service information. Some IBM Machines are eligible for On-site warranty service depending on the country where service is performed.*

IBM Statement of Limited Warranty

Z125-4753-06 8/2000

Part 1 - General Terms

This Statement of Limited Warranty includes Part 1 - General Terms and Part 2 - Country-unique Terms. The terms of Part 2 replace or modify those of Part 1. The warranties provided by IBM in this Statement of Limited Warranty apply only to Machines you purchase for your use, and not for resale, from IBM or your reseller. The term "Machine" means an IBM machine, its features, conversions, upgrades, elements, or accessories, or any combination of them. The term "Machine" does not include any software programs, whether pre-loaded with the Machine, installed subsequently or otherwise. Unless IBM specifies otherwise, the following warranties apply only in the country where you acquire the Machine. Nothing in this Statement of Limited Warranty affects any statutory rights of consumers that cannot be waived or limited by contract. If you have any questions, contact IBM or your reseller.

The IBM Warranty for Machines

IBM warrants that each Machine 1) is free from defects in materials and workmanship and 2) conforms to IBM's Official Published Specifications ("Specifications"). The warranty period for a Machine is a specified, fixed period commencing on its Date of Installation. The date on your sales receipt is the Date of Installation unless IBM or your reseller informs you otherwise.

If a Machine does not function as warranted during the warranty period, and IBM or your reseller are unable to either 1) make it do so or 2) replace it with one that is at least functionally equivalent, you may return it to your place of purchase and your money will be refunded.

Extent of Warranty

The warranty does not cover the repair or exchange of a Machine resulting from misuse, accident, modification, unsuitable physical or operating environment, improper maintenance by you, or failure caused by a product for which IBM is not responsible. The warranty is voided by removal or alteration of Machine or parts identification labels.

THESE WARRANTIES ARE YOUR EXCLUSIVE WARRANTIES AND REPLACE ALL OTHER WARRANTIES OR CONDITIONS, EXPRESS OR IMPLIED, INCLUDING, BUT NOT LIMITED TO, THE IMPLIED WARRANTIES OR CONDITIONS OF MERCHANTABILITY AND FITNESS FOR A PARTICULAR PURPOSE. THESE WARRANTIES GIVE YOU SPECIFIC LEGAL RIGHTS AND YOU MAY ALSO HAVE OTHER RIGHTS WHICH VARY FROM JURISDICTION TO JURISDICTION. SOME JURISDICTIONS DO NOT ALLOW THE EXCLUSION OR LIMITATION OF EXPRESS OR IMPLIED WARRANTIES, SO THE ABOVE EXCLUSION OR LIMITATION MAY NOT APPLY TO YOU. IN THAT EVENT, SUCH WARRANTIES ARE LIMITED IN DURATION TO THE WARRANTY PERIOD. NO WARRANTIES APPLY AFTER THAT PERIOD.

Items Not Covered by Warranty

IBM does not warrant uninterrupted or error-free operation of a Machine.

Any technical or other support provided for a Machine under warranty, such as assistance via telephone with "how-to" questions and those regarding Machine set-up and installation, will be provided **WITHOUT WARRANTIES OF ANY KIND.**

Warranty Service

To obtain warranty service for a Machine, contact IBM or your reseller. If you do not register your Machine with IBM, you may be required to present proof of purchase.

During the warranty period, IBM or your reseller, if approved by IBM to provide warranty service, provides without charge certain types of repair and exchange service to keep Machines in, or restore them to, conformance with their Specifications. IBM or your reseller will inform you of the available types of service for a Machine based on its country of installation. At its discretion, IBM or your reseller will 1) either repair or exchange the failing Machine and 2) provide the service either at your location or a service center. IBM or your reseller will also manage and install selected engineering changes that apply to the Machine.

Some parts of IBM Machines are designated as Customer Replaceable Units (called "CRUs"), e.g., keyboards, memory, or hard disk drives. IBM ships CRUs to you for replacement by you. You must return all defective CRUs to IBM within 30 days of your receipt of the replacement CRU. You are responsible for downloading designated Machine Code and Licensed Internal Code updates from an IBM Internet Web site or from other electronic media, and following the instructions that IBM provides.

When warranty service involves the exchange of a Machine or part, the item IBM or your reseller replaces becomes its property and the replacement becomes yours. You represent that all removed items are genuine and unaltered. The replacement may not be new, but will be in good working order and at least functionally equivalent to the item replaced. The replacement assumes the warranty service status of the replaced item. Many features, conversions, or upgrades involve the removal of parts and their return to IBM. A part that replaces a removed part will assume the warranty service status of the removed part.

Before IBM or your reseller exchanges a Machine or part, you agree to remove all features, parts, options, alterations, and attachments not under warranty service.

You also agree to

1. ensure that the Machine is free of any legal obligations or restrictions that prevent its exchange;
2. obtain authorization from the owner to have IBM or your reseller service a Machine that you do not own; and

3. where applicable, before service is provided:
 - a. follow the problem determination, problem analysis, and service request procedures that IBM or your reseller provides;
 - b. secure all programs, data, and funds contained in a Machine;
 - c. provide IBM or your reseller with sufficient, free, and safe access to your facilities to permit them to fulfill their obligations; and
 - d. inform IBM or your reseller of changes in a Machine's location.

IBM is responsible for loss of, or damage to, your Machine while it is 1) in IBM's possession or 2) in transit in those cases where IBM is responsible for the transportation charges.

Neither IBM nor your reseller is responsible for any of your confidential, proprietary or personal information contained in a Machine which you return to IBM or your reseller for any reason. You should remove all such information from the Machine prior to its return.

Limitation of Liability

Circumstances may arise where, because of a default on IBM's part or other liability, you are entitled to recover damages from IBM. In each such instance, regardless of the basis on which you are entitled to claim damages from IBM (including fundamental breach, negligence, misrepresentation, or other contract or tort claim), except for any liability that cannot be waived or limited by applicable laws, IBM is liable for no more than

1. damages for bodily injury (including death) and damage to real property and tangible personal property; and
2. the amount of any other actual direct damages, up to the charges (if recurring, 12 months' charges apply) for the Machine that is subject of the claim. For purposes of this item, the term "Machine" includes Machine Code and Licensed Internal Code.

This limit also applies to IBM's suppliers and your reseller. It is the maximum for which IBM, its suppliers, and your reseller are collectively responsible.

UNDER NO CIRCUMSTANCES IS IBM LIABLE FOR ANY OF THE FOLLOWING: 1) THIRD-PARTY CLAIMS AGAINST YOU FOR DAMAGES (OTHER THAN THOSE UNDER THE FIRST ITEM LISTED ABOVE); 2) LOSS OF, OR DAMAGE TO, YOUR RECORDS OR DATA; OR 3) SPECIAL, INCIDENTAL, OR INDIRECT DAMAGES OR FOR ANY ECONOMIC CONSEQUENTIAL DAMAGES, LOST PROFITS OR LOST SAVINGS, EVEN IF IBM, ITS SUPPLIERS OR YOUR RESELLER IS INFORMED OF THEIR POSSIBILITY. SOME JURISDICTIONS DO NOT ALLOW THE EXCLUSION OR LIMITATION OF INCIDENTAL OR CONSEQUENTIAL DAMAGES, SO THE ABOVE LIMITATION OR EXCLUSION MAY NOT APPLY TO YOU.

Governing Law

Both you and IBM consent to the application of the laws of the country in which you acquired the Machine to govern, interpret, and enforce all of your and IBM's rights, duties, and obligations arising from, or relating in any manner to, the subject matter of this Agreement, without regard to conflict of law principles.

Part 2 - Country-unique Terms

AMERICAS

BRAZIL

Governing Law: *The following is added after the first sentence:*

Any litigation arising from this Agreement will be settled exclusively by the court of Rio de Janeiro.

NORTH AMERICA

Warranty Service: *The following is added to this Section:*

To obtain warranty service from IBM in Canada or the United States, call 1-800-IBM-SERV (426-7378).

CANADA

Governing Law: *The following replaces "laws of the country in which you acquired the Machine" in the first sentence:*

laws in the Province of Ontario.

UNITED STATES

Governing Law: *The following replaces "laws of the country in which you acquired the Machine" in the first sentence:*

laws of the State of New York.

ASIA PACIFIC

AUSTRALIA

The IBM Warranty for Machines: *The following paragraph is added to this Section:*

The warranties specified in this Section are in addition to any rights you may have under the Trade Practices Act 1974 or other similar legislation and are only limited to the extent permitted by the applicable legislation.

Limitation of Liability: *The following is added to this Section:*

Where IBM is in breach of a condition or warranty implied by the Trade Practices Act 1974 or other similar legislation, IBM's liability is limited to the repair or replacement of the goods or the supply of equivalent goods. Where that condition or warranty relates to right to sell, quiet possession or clear title, or the goods are of a kind ordinarily acquired for personal, domestic or household use or consumption, then none of the limitations in this paragraph apply.

Governing Law: *The following replaces "laws of the country in which you acquired the Machine" in the first sentence:*

laws of the State or Territory.

CAMBODIA, LAOS, AND VIETNAM

Governing Law: *The following replaces "laws of the country in which you acquired the Machine" in the first sentence:*

laws of the State of New York.

The following is added to this Section:

Disputes and differences arising out of or in connection with this Agreement shall be finally settled by arbitration which shall be held in Singapore in accordance with the rules of the International Chamber of Commerce (ICC). The arbitrator or arbitrators designated in conformity with those rules shall have the power to rule on their own competence and on the validity of the Agreement to submit to arbitration. The arbitration award shall be final and binding for the parties without appeal and the arbitral award shall be in writing and set forth the findings of fact and the conclusions of law.

All proceedings shall be conducted, including all documents presented in such proceedings, in the English language. The number of arbitrators shall be three, with each side to the dispute being entitled to appoint one arbitrator.

The two arbitrators appointed by the parties shall appoint a third arbitrator before proceeding upon the reference. The third arbitrator shall act as chairman of the proceedings. Vacancies in the post of chairman shall be filled by the president of the ICC. Other vacancies shall be filled by the respective nominating party. Proceedings shall continue from the stage they were at when the vacancy occurred.

If one of the parties refuses or otherwise fails to appoint an arbitrator within 30 days of the date the other party appoints its, the first appointed arbitrator shall be the sole arbitrator, provided that the arbitrator was validly and properly appointed.

The English language version of this Agreement prevails over any other language version.

HONG KONG AND MACAU

Governing Law: *The following replaces "laws of the country in which you acquired the Machine" in the first sentence:*
laws of Hong Kong Special Administrative Region.

INDIA

Limitation of Liability: *The following replaces items 1 and 2 of this Section:*

1. liability for bodily injury (including death) or damage to real property and tangible personal property will be limited to that caused by IBM's negligence;
2. as to any other actual damage arising in any situation involving nonperformance by IBM pursuant to, or in any way related to the subject of this Statement of Limited Warranty, IBM's liability will be limited to the charge paid by you for the individual Machine that is the subject of the claim.

JAPAN

Governing Law: *The following sentence is added to this Section:*
Any doubts concerning this Agreement will be initially resolved between us in good faith and in accordance with the principle of mutual trust.

NEW ZEALAND

The IBM Warranty for Machines: *The following paragraph is added to this Section:*
The warranties specified in this Section are in addition to any rights you may have under the Consumer Guarantees Act 1993 or other legislation which cannot be excluded or limited. The Consumer Guarantees Act 1993 will not apply in respect of any goods which IBM provides, if you require the goods for the purposes of a business as defined in that Act.

Limitation of Liability: *The following is added to this Section:*

Where Machines are not acquired for the purposes of a business as defined in the Consumer Guarantees Act 1993, the limitations in this Section are subject to the limitations in that Act.

PEOPLE'S REPUBLIC OF CHINA (PRC)

Governing Law: *The following replaces this Section:*
Both you and IBM consent to the application of the laws of the State of New York

(except when local law requires otherwise) to govern, interpret, and enforce all your and IBM's rights, duties, and obligations arising from, or relating in any manner to, the subject matter of this Agreement, without regard to conflict of law principles.

Any disputes arising from or in connection with this Agreement will first be resolved by friendly negotiations, failing which either of us has the right to submit the dispute to the China International Economic and Trade Arbitration Commission in Beijing, the PRC, for arbitration in accordance with its arbitration rules in force at the time. The arbitration tribunal will consist of three arbitrators. The language to be used therein will be English and Chinese. An arbitral award will be final and binding on all the parties, and will be enforceable under the Convention on the Recognition and Enforcement of Foreign Arbitral Awards (1958).

The arbitration fee will be borne by the losing party unless otherwise determined by the arbitral award.

During the course of arbitration, this Agreement will continue to be performed except for the part which the parties are disputing and which is undergoing arbitration.

EUROPE, MIDDLE EAST, AFRICA (EMEA)

THE FOLLOWING TERMS APPLY TO ALL EMEA COUNTRIES:

The terms of this Statement of Limited Warranty apply to Machines purchased from IBM or an IBM reseller.

Warranty Service:

If you purchase an IBM Machine in Austria, Belgium, Denmark, Estonia, Finland, France, Germany, Greece, Iceland, Ireland, Italy, Latvia, Lithuania, Luxembourg, Netherlands, Norway, Portugal, Spain, Sweden, Switzerland or United Kingdom, you may obtain warranty service for that Machine in any of those countries from either (1) an IBM reseller approved to perform warranty service or (2) from IBM. If you purchase an IBM Personal Computer Machine in Albania, Armenia, Belarus, Bosnia and Herzegovina, Bulgaria, Croatia, Czech Republic, Georgia, Hungary, Kazakhstan, Kirghizia, Federal Republic of Yugoslavia, Former Yugoslav Republic of Macedonia (FYROM), Moldova, Poland, Romania, Russia, Slovak Republic, Slovenia, or Ukraine, you may obtain warranty service for that Machine in any of those countries from either (1) an IBM reseller approved to perform warranty service or (2) from IBM.

If you purchase an IBM Machine in a Middle Eastern or African country, you may obtain warranty service for that Machine from the IBM entity within the country of purchase, if that IBM entity provides warranty service in that country, or from an IBM reseller, approved by IBM to perform warranty service on that Machine in that country. Warranty service in Africa is available within 50 kilometers of an IBM authorized service provider. You are responsible for transportation costs for Machines located outside 50 kilometers of an IBM authorized service provider.

Governing Law:

The applicable laws that govern, interpret and enforce rights, duties, and obligations of each of us arising from, or relating in any manner to, the subject matter of this Statement, without regard to conflict of laws principles, as well as Country-unique terms and competent court for this Statement are those of the country in which the warranty service is being provided, except that in 1) Albania, Bosnia-Herzegovina, Bulgaria, Croatia, Hungary, Former Yugoslav Republic of Macedonia, Romania, Slovakia, Slovenia, Armenia, Azerbaijan, Belarus, Georgia, Kazakhstan, Kyrgyzstan, Moldova, Russia, Tajikistan, Turkmenistan, Ukraine, and Uzbekistan, the laws of Austria apply; 2) Estonia, Latvia, and Lithuania, the laws of Finland apply; 3) Algeria, Benin, Burkina Faso, Cameroon, Cape Verde, Central African Republic, Chad,

Congo, Djibouti, Democratic Republic of Congo, Equatorial Guinea, France, Gabon, Gambia, Guinea, Guinea-Bissau, Ivory Coast, Lebanon, Mali, Mauritania, Morocco, Niger, Senegal, Togo, and Tunisia, this Agreement will be construed and the legal relations between the parties will be determined in accordance with the French laws and all disputes arising out of this Agreement or related to its violation or execution, including summary proceedings, will be settled exclusively by the Commercial Court of Paris; 4) Angola, Bahrain, Botswana, Burundi, Egypt, Eritrea, Ethiopia, Ghana, Jordan, Kenya, Kuwait, Liberia, Malawi, Malta, Mozambique, Nigeria, Oman, Pakistan, Qatar, Rwanda, Sao Tome, Saudi Arabia, Sierra Leone, Somalia, Tanzania, Uganda, United Arab Emirates, United Kingdom, West Bank/Gaza, Yemen, Zambia, and Zimbabwe, this Agreement will be governed by English Law and disputes relating to it will be submitted to the exclusive jurisdiction of the English courts; and 5) in Greece, Israel, Italy, Portugal, and Spain any legal claim arising out of this Statement will be brought before, and finally settled by, the competent court of Athens, Tel Aviv, Milan, Lisbon, and Madrid, respectively.

THE FOLLOWING TERMS APPLY TO THE COUNTRY SPECIFIED:

AUSTRIA AND GERMANY

The IBM Warranty for Machines: *The following replaces the first sentence of the first paragraph of this Section:*

The warranty for an IBM Machine covers the functionality of the Machine for its normal use and the Machine's conformity to its Specifications.

The following paragraphs are added to this Section:

The minimum warranty period for Machines is six months. In case IBM or your reseller is unable to repair an IBM Machine, you can alternatively ask for a partial refund as far as justified by the reduced value of the unrepaired Machine or ask for a cancellation of the respective agreement for such Machine and get your money refunded.

Extent of Warranty: *The second paragraph does not apply.*

Warranty Service: *The following is added to this Section:*

During the warranty period, transportation for delivery of the failing Machine to IBM will be at IBM's expense.

Limitation of Liability: *The following paragraph is added to this Section:*

The limitations and exclusions specified in the Statement of Limited Warranty will not apply to damages caused by IBM with fraud or gross negligence and for express warranty.

The following sentence is added to the end of item 2:

IBM's liability under this item is limited to the violation of essential contractual terms in cases of ordinary negligence.

EGYPT

Limitation of Liability: *The following replaces item 2 in this Section:*

as to any other actual direct damages, IBM's liability will be limited to the total amount you paid for the Machine that is the subject of the claim. For purposes of this item, the term "Machine" includes Machine Code and Licensed Internal Code.

Applicability of suppliers and resellers (unchanged).

FRANCE

Limitation of Liability: *The following replaces the second sentence of the first paragraph of this Section:*

In such instances, regardless of the basis on which you are entitled to claim damages from IBM, IBM is liable for no more than: *(items 1 and 2 unchanged)*.

IRELAND

Extent of Warranty: *The following is added to this Section:*

Except as expressly provided in these terms and conditions, all statutory conditions, including all warranties implied, but without prejudice to the generality of the foregoing all warranties implied by the Sale of Goods Act 1893 or the Sale of Goods and Supply of Services Act 1980 are hereby excluded.

Limitation of Liability: *The following replaces items one and two of the first paragraph of this Section:*

1. death or personal injury or physical damage to your real property solely caused by IBM's negligence; and
2. the amount of any other actual direct damages, up to 125 percent of the charges (if recurring, the 12 months' charges apply) for the Machine that is the subject of the claim or which otherwise gives rise to the claim.

Applicability of suppliers and resellers (unchanged).

The following paragraph is added at the end of this Section:

IBM's entire liability and your sole remedy, whether in contract or in tort, in respect of any default shall be limited to damages.

ITALY

Limitation of Liability: *The following replaces the second sentence in the first paragraph:*

In each such instance unless otherwise provided by mandatory law, IBM is liable for no more than:

1. *(unchanged)*
2. as to any other actual damage arising in all situations involving nonperformance by IBM pursuant to, or in any way related to the subject matter of this Statement of Warranty, IBM's liability, will be limited to the total amount you paid for the Machine that is the subject of the claim.

Applicability of suppliers and resellers (unchanged).

The following replaces the third paragraph of this Section:

Unless otherwise provided by mandatory law, IBM and your reseller are not liable for any of the following: *(items 1 and 2 unchanged)* 3) indirect damages, even if IBM or your reseller is informed of their possibility.

SOUTH AFRICA, NAMIBIA, BOTSWANA, LESOTHO AND SWAZILAND

Limitation of Liability: *The following is added to this Section:*

IBM's entire liability to you for actual damages arising in all situations involving nonperformance by IBM in respect of the subject matter of this Statement of Warranty will be limited to the charge paid by you for the individual Machine that is the subject of your claim from IBM.

UNITED KINGDOM

Limitation of Liability: *The following replaces items 1 and 2 of the first paragraph of this Section:*

1. death or personal injury or physical damage to your real property solely caused by IBM's negligence;
2. the amount of any other actual direct damages or loss, up to 125 percent of the charges (if recurring, the 12 months' charges apply) for the Machine that is the subject of the claim or which otherwise gives rise to the claim;

The following item is added to this paragraph:

3. breach of IBM's obligations implied by Section 12 of the Sale of Goods Act 1979 or Section 2 of the Supply of Goods and Services Act 1982.

Applicability of suppliers and resellers (unchanged).

The following is added to the end of this Section:

IBM's entire liability and your sole remedy, whether in contract or in tort, in respect of any default shall be limited to damages.

Notices

This publication was developed for products and services offered in the U.S.A.

IBM may not offer the products, services, or features discussed in this document in other countries. Consult your local IBM representative for information on the products and services currently available in your area. Any reference to an IBM product, program, or service is not intended to state or imply that only that IBM product, program, or service may be used. Any functionally equivalent product, program, or service that does not infringe any IBM intellectual property right may be used instead. However, it is the user's responsibility to evaluate and verify the operation of any non-IBM product, program, or service.

IBM may have patents or pending patent applications covering subject matter described in this document. The furnishing of this document does not give you any license to these patents. You can send license inquiries, in writing, to:

*IBM Director of Licensing
IBM Corporation
North Castle Drive
Armonk, NY 10504-1785
U.S.A.*

INTERNATIONAL BUSINESS MACHINES CORPORATION PROVIDES THIS PUBLICATION "AS IS" WITHOUT WARRANTY OF ANY KIND, EITHER EXPRESS OR IMPLIED, INCLUDING, BUT NOT LIMITED TO, THE IMPLIED WARRANTIES OF NON-INFRINGEMENT, MERCHANTABILITY OR FITNESS FOR A PARTICULAR PURPOSE. Some states do not allow disclaimer of express or implied warranties in certain transactions, therefore, this statement may not apply to you.

This information could include technical inaccuracies or typographical errors. Changes are periodically made to the information herein; these changes will be incorporated in new editions of the publication. IBM may make improvements and/or changes in the product(s) and/or the program(s) described in this publication at any time without notice.

Any references in this publication to non-IBM Web sites are provided for convenience only and do not in any manner serve as an endorsement of those Web sites. The materials at those Web sites are not part of the materials for this IBM product, and use of those Web sites is at your own risk.

IBM may use or distribute any of the information you supply in any way it believes appropriate without incurring any obligation to you.

Edition notice

© COPYRIGHT INTERNATIONAL BUSINESS MACHINES CORPORATION, 2000, 2001. All rights reserved.

Note to U.S. Government Users — Documentation related to restricted rights — Use, duplication or disclosure is subject to restrictions set forth in GSA ADP Schedule Contract with IBM Corp.

Processing date data

This IBM hardware product and IBM software products that might be packaged with it have been designed, when used in accordance with their associated documentation, to process date data correctly within and between the 20th and 21st centuries, provided all other products (for example, software, hardware, and firmware) used with these products properly exchange accurate date data with them.

IBM cannot take responsibility for the date data processing capabilities of non-IBM products, even if those products are preinstalled or otherwise distributed by IBM. You should contact the vendors responsible for those products directly to determine the capabilities of their products and update them if needed. This IBM hardware product cannot prevent errors that might occur if software, upgrades, or peripheral devices you use or exchange data with do not process date data correctly.

The foregoing is a Year 2000 Readiness Disclosure.

Trademarks

The following terms are trademarks of the IBM Corporation in the United States, other countries, or both:

HelpCenter	ServerGuide
IBM	TechConnect
Netfinity	the e-business logo
Netfinity Manager	xSeries
Predictive Failure Analysis	

Intel, Pentium and Pentium II are trademarks of Intel Corporation in the United States, other countries, or both.

Microsoft, Windows, and Windows NT are trademarks of Microsoft Corporation in the United States, other countries, or both.

UNIX is a registered trademark of The Open Group in the United States and other countries.

Java and all Java-based trademarks and logos are trademarks or registered trademarks of Sun Microsystems, Inc. in the United States, other countries, or both.

Other company, product, and service names may be trademarks or service marks of others.

Important notes

Processor speeds indicate the internal clock speed of the microprocessor; other factors also affect application performance.

When referring to hard disk drive capacity, MB stands for 1 000 000 bytes and GB stands for 1 000 000 000 bytes. Total user-accessible capacity may vary depending on operating environments.

Maximum internal hard disk drive capacities assume the replacement of any standard hard disk drives and population of all hard disk drive bays with the largest currently supported drives available from IBM.

Unless otherwise stated, IBM makes no representations or warranties with respect to non-IBM products. Support (if any) for the non-IBM products is provided by the third party, not IBM.

Some software may differ from its retail version (if available), and may not include user manuals or all program functionality.

Electronic emission notices

Federal Communications Commission (FCC) Statement

Note: This equipment has been tested and found to comply with the limits for a Class A digital device, pursuant to Part 15 of the FCC Rules. These limits are designed to provide reasonable protection against harmful interference when the equipment is operated in a commercial environment. This equipment generates, uses, and can radiate radio frequency energy and, if not installed and used in accordance with the instruction manual, may cause harmful interference to radio communications. Operation of this equipment in a residential area is likely to cause harmful interference, in which case the user will be required to correct the interference at his own expense.

Properly shielded and grounded cables and connectors must be used in order to meet FCC emission limits. IBM is not responsible for any radio or television interference caused by using other than recommended cables and connectors or by unauthorized changes or modifications to this equipment. Unauthorized changes or modifications could void the user's authority to operate the equipment.

This device complies with Part 15 of the FCC Rules. Operation is subject to the following two conditions: (1) this device may not cause harmful interference, and (2) this device must accept any interference received, including interference that may cause undesired operation.

Industry Canada Class A emission compliance statement

This Class A digital apparatus complies with Canadian ICES-003.

Avis de conformité à la réglementation d'Industrie Canada

Cet appareil numérique de classe A est conforme à la norme NMB-003 du Canada.

Australia and New Zealand Class A statement

Attention: This is a Class A product. In a domestic environment this product may cause radio interference in which case the user may be required to take adequate measures.

United Kingdom telecommunications safety requirement

Notice to Customers

This apparatus is approved under approval number NS/G/1234/J/100003 for indirect connection to public telecommunication systems in the United Kingdom.

European Union EMC Directive conformance statement

This product is in conformity with the protection requirements of EU Council Directive 89/336/EEC on the approximation of the laws of the Member States relating to electromagnetic compatibility. IBM cannot accept responsibility for any failure to satisfy the protection requirements resulting from a nonrecommended modification of the product, including the fitting of non-IBM option cards.

This product has been tested and found to comply with the limits for Class A Information Technology Equipment according to CISPR 22/European Standard EN 55022. The Limits for Class A equipment were derived for commercial and industrial environments to provide reasonable protection against interference with licensed communication equipment.

Attention: This is a Class A product. In a domestic environment this product may cause radio interference in which case the user may be required to take adequate measures.

Taiwan electrical emission statement

警告使用者：
這是甲類的資訊產品，在
居住的環境中使用時，可
能會造成射頻干擾，在這
種情況下，使用者會被要
求採取某些適當的對策。

Japanese Voluntary Control Council for Interference (VCCI) statement

この装置は、情報処理装置等電波障害自主規制協議会（VCCI）の基準に基づくクラスA情報技術装置です。この装置を家庭環境で使用すると電波妨害を引き起こすことがあります。この場合には使用者が適切な対策を講ずるよう要求されることがあります。

Power cords

For your safety, IBM provides a power cord with a grounded attachment plug to use with this IBM product. To avoid electrical shock, always use the power cord and plug with a properly grounded outlet.

IBM power cords used in the United States and Canada are listed by Underwriter's Laboratories (UL) and certified by the Canadian Standards Association (CSA).

For units intended to be operated at 115 volts: Use a UL-listed and CSA-certified cord set consisting of a minimum 18 AWG, Type SVT or SJT, three-conductor cord, a maximum of 15 feet in length and a parallel blade, grounding-type attachment plug rated 15 amperes, 125 volts.

For units intended to be operated at 230 volts (U.S. use): Use a UL-listed and CSA-certified cord set consisting of a minimum 18 AWG, Type SVT or SJT, three-conductor cord, a maximum of 15 feet in length and a tandem blade, grounding-type attachment plug rated 15 amperes, 250 volts.

For units intended to be operated at 230 volts (outside the U.S.): Use a cord set with a grounding-type attachment plug. The cord set should have the appropriate safety approvals for the country in which the equipment will be installed.

IBM power cords for a specific country or region are usually available only in that country or region.

IBM power cord part number	Used in these countries and regions
13F9940	Argentina, Australia, China (PRC), New Zealand, Papua New Guinea, Paraguay, Uruguay, Western Samoa
13F9979	Afghanistan, Algeria, Andorra, Angola, Austria, Belgium, Benin, Bulgaria, Burkina Faso, Burundi, Cameroon, Central African Rep., Chad, China (Macau S.A.R.), Czech Republic, Egypt, Finland, France, French Guiana, Germany, Greece, Guinea, Hungary, Iceland, Indonesia, Iran, Ivory Coast, Jordan, Lebanon, Luxembourg, Malagasy, Mali, Martinique, Mauritania, Mauritius, Monaco, Morocco, Mozambique, Netherlands, New Caledonia, Niger, Norway, Poland, Portugal, Romania, Senegal, Slovakia, Spain, Sudan, Sweden, Syria, Togo, Tunisia, Turkey, former USSR, Vietnam, former Yugoslavia, Zaire, Zimbabwe
13F9997	Denmark
14F0015	Bangladesh, Burma, Pakistan, South Africa, Sri Lanka
14F0033	Antigua, Bahrain, Brunei, Channel Islands, China (Hong Kong S.A.R.), Cyprus, Dubai, Fiji, Ghana, India, Iraq, Ireland, Kenya, Kuwait, Malawi, Malaysia, Malta, Nepal, Nigeria, Polynesia, Qatar, Sierra Leone, Singapore, Tanzania, Uganda, United Kingdom, Yemen, Zambia
14F0051	Liechtenstein, Switzerland
14F0069	Chile, Ethiopia, Italy, Libya, Somalia
14F0087	Israel
1838574	Thailand

IBM power cord part number	Used in these countries and regions
6952301	Bahamas, Barbados, Bermuda, Bolivia, Brazil, Canada, Cayman Islands, Colombia, Costa Rica, Dominican Republic, Ecuador, El Salvador, Guatemala, Guyana, Haiti, Honduras, Jamaica, Japan, Korea (South), Liberia, Mexico, Netherlands Antilles, Nicaragua, Panama, Peru, Philippines, Saudi Arabia, Suriname, Taiwan, Trinidad (West Indies), United States of America, Venezuela

Index

A

- alerts, forwarding 48
- ASM device drivers, installing 25, 45
- ASM interconnect module
 - installing in the xSeries 220 49
 - installing in the xSeries 330 50
- ASM interconnect network 47
 - cabling 49
 - configuration examples 52
 - planning 47

C

- Class A electronic emission notice 69
- components
 - unpacking 6
 - verifying 6
- configuring remote access 19
- configuring remote control passwords 29
- connecting, serial port cables 16

D

- device drivers in xSeries 220
 - installing 27
 - updating 26
- device drivers in xSeries 330
 - installing 31
 - updating 45
- documentation 3
- documentation browser
 - system requirements 3
 - using 4

E

- electrical safety v
- electronic emission Class A notice 69
- Ethernet LAN port, cabling 16, 36
- Ethernet settings, configuring 20, 40
- example configurations 52

F

- FCC Class A notice 69
- firmware, updating 17, 37
- forwarding alerts 48

H

- help 57

- HelpCenter 57
- services 57
- Web sites 58

I

- important notes 69
- installation requirements 2
- installing device drivers
 - in xSeries 220 25
 - in xSeries 330 31
- installing the adapter
 - in xSeries 220 11
 - in xSeries 330 31
- interconnect network, planning 47
- inventory 6

L

- LAN, connecting 16, 35

N

- notices
 - electronic emission, Class A 69
 - FCC, Class A 69
 - miscellaneous 69
 - product 69
 - trademarks 68
- notices and statements 5
- Novell NetWare device drivers, installing 28

P

- planning your interconnect 47
- point-to-point protocol, setting 24, 43
- power cords 71
- power-supply, connecting 15, 34
- product
 - notices 69

R

- remote access, configuring 19, 39
- remote control passwords, configuring 29
- Remote Supervisor Adapter 2
 - components 8
 - configuring remote access 19
 - installing in xSeries 220 12
 - installing in xSeries 330 31

S

- safety requirements iii
 - electrical v
 - electronic emission Class A notice 69
 - FCC Class A notice 69
- SCO UnixWare device drivers, installing 28
- serial port
 - cabling 17, 37
 - configuring 22, 42
- serial port cables, connecting 16, 35
- static-sensitive devices 5

T

- trademarks 68

U

- United States electronic emission Class A notice 69
- United States FCC Class A notice 69
- updating firmware 37

W

- Windows 2000 device drivers, installing 26
- Windows NT device drivers, installing 27



Part Number: 25P2504



Printed in the United States of America
on recycled paper containing 10%
recovered post-consumer fiber.

25P2504

