

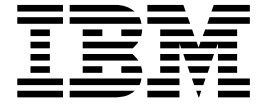
IBM TotalStorage FAStT Storage Manager Version 8.4



# Library Guide and Common Index



IBM TotalStorage FAStT Storage Manager Version 8.4



# Library Guide and Common Index

**Note**

Before using this information and the product it supports, read the general information in "Notices" on page 31.

**First Edition (September 2003)**

**© Copyright International Business Machines Corporation 2003. All rights reserved.**

US Government Users Restricted Rights – Use, duplication or disclosure restricted by GSA ADP Schedule Contract with IBM Corp.

---

## Using the Library Guide and Common Index

The IBM® TotalStorage™ FAST Storage Manager Version 8.4 Library Guide and Common Index applies to the IBM TotalStorage Storage Manager Version 8.4 software library. Storage Manager Version 8.4 supports Linux, Novell NetWare, Microsoft® Windows NT®, Windows® 2000, Windows Server 2003, VMware, HP-UX, AIX, and Solaris operating systems.

Use this softcopy document as a dynamic task-oriented guide to the FAST library and cross index of related topics. Dynamic links from the master index to particular chapters, headings, and sections within these documents operate only when those documents reside together in the same directory as the FAST Library Guide and Common Index. Links to Internet documents cited outside the index depend on the proper configuration of your Adobe Acrobat Reader.

If your Adobe Acrobat Reader is not configured to access the Internet and to take full advantage of the FAST Library Guide and Common Index, identify the version of your Acrobat Reader and configure it as follows:

### Acrobat Reader 4.0

1. Click **File -> Preferences -> General**.
2. Clear the **Web browser integration** box.
3. Click **OK**.
4. Click **File -> Preferences -> Weblink...**
5. Set the Web browser application to use an external browser (for example, Navigator or Internet Explorer).
6. Click **OK**.
7. Click **File -> Preferences -> Web capture...**
8. Change the **Open Weblinks** field to **In Web Browser**.

### Acrobat Reader 5.0

1. Click **Edit -> Preferences -> Web capture**
2. Change the **Open Weblinks** field to **In Web Browser**.

Click this button for information about Adobe Acrobat Reader, as well as to get downloads of the reader:

Adobe Acrobat Downloads



---

## Contents of this document

This document consists of the following sections:

- **“FAStT installation process overview” on page 5**

An installation overview diagram that associates the hardware and software documents with their ordered installation tasks.

- **“FAStT documentation” on page 7**

Tables that detail FAStT product libraries whose document titles are associated with common user tasks and link you to complete texts on the Internet.

- **“Master Index: FAStT Storage Manager 8.4” on page 9**

Index entries that link you directly to their respective references within each of the following documents as updated for the current release:

1. *IBM TotalStorage FAStT Storage Manager 8.4 Installation and Support Guide for Intel-based Operating System Environments*, GC26-7589 (coded in the index as **INTEL**)
2. *IBM TotalStorage FAStT Storage Manager Version 8.4 Installation and Support Guide for AIX<sup>®</sup>, UNIX, and Solaris*, GC26-7574 (coded in the index as **UNIX**)
3. *IBM TotalStorage FAStT Storage Manger Concepts Guide*, GC26-7560 (coded in the index as **CONCEPTS**)
4. *IBM TotalStorage FAStT Storage Manager Copy Services User's Guide*, GC26-7561 (coded in the index as **COPYSERV**)

This document is intended to be used in softcopy form. Independent use of this document in hardcopy form is, therefore, significantly limited.





# FAStT installation process overview

Figure 1 gives an overview of the FAStT hardware and the FAStT Storage Manager software installation process. Lined arrows in the flow chart indicate consecutive steps in the hardware and software installation process. Labeled arrows indicate which current documents provide detailed information about those steps.

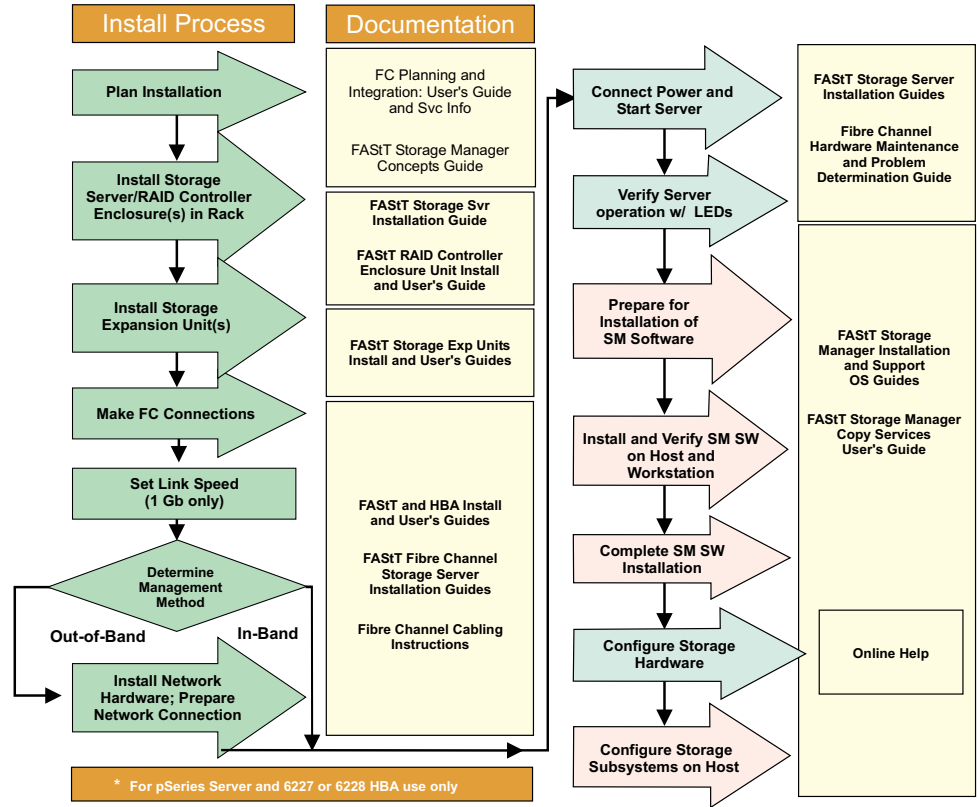


Figure 1. Installation process flow by current publications



---

## FAStT documentation

The following table presents an overview of the FAStT Storage Manager product library. The table lists documents included in the library and what common tasks they address. Click on active links in the tables to access those documents currently available on the Internet. You can access documentation for the other FAStT products at the following Web site:

[ssddom02.storage.ibm.com/techsup/webnav.nsf/support/fastt/](http://ssddom02.storage.ibm.com/techsup/webnav.nsf/support/fastt/)

## FAST Storage Manager Version 8.4 library

Table 1 associates each document in the FAST Storage Manager library with its related common user tasks.

Table 1. TotalStorage FAST Storage Manager Version 8.4 titles by user tasks

Title	User Tasks					
	Planning	Hardware Installation	Software Installation	Configuration	Operation and Administration	Diagnosis and Maintenance
IBM TotalStorage FAST Storage Manager 8.4 Library Guide and Common Index, GC26-7600	✓	✓	✓	✓	✓	✓
IBM TotalStorage FAST Storage Manager 8.4 Installation and Support Guide for Intel-based Operating System Environments, GC26-7589	✓		✓	✓		
IBM TotalStorage FAST Storage Manager 8.4 Installation and Support Guide for AIX, UNIX, and Solaris, GC26-7593	✓		✓	✓		
IBM TotalStorage FAST Storage Manager Copy Services User's Guide, GC26-7561	✓		✓	✓	✓	
IBM FAST Storage Manager Script Commands (see product CD)				✓		
IBM TotalStorage FAST Storage Manager Concepts Guide, GC26-7560	✓	✓	✓	✓	✓	✓

---

# Master Index: FAS*St*T Storage Manager 8.4

## Special characters

CONCEPTS–12

### A

about this document CONCEPTS–xi, COPYSERV–xi,  
INTEL–xiii, SM84UNIX–xi

access logical drive INTEL–9

access LUN SM84UNIX–52, SM84UNIX–69

Access LUN mapping

    changing INTEL–125

    defining INTEL–125

access volume CONCEPTS–16, SM84UNIX–1

access volume, detecting after host restart INTEL–115,  
INTEL–118

access volumes SM84UNIX–8

activating the Remote Mirror Option COPYSERV–114,  
COPYSERV–116

add device option CONCEPTS–21

adding logical drives INTEL–117

adding

    devices INTEL–103

    logical drives INTEL–109

address, IBM CONCEPTS–xvi, COPYSERV–xvii,  
INTEL–xx

address

    for e-mail comments SM84UNIX–xv

    for reader comment form SM84UNIX–xv

    of IBM SM84UNIX–xv

    of the IBM director of licensing SM84UNIX–119

administrator privilege requirements INTEL–25,  
INTEL–91

ADT feature CONCEPTS–40, CONCEPTS–43

Advanced menu CONCEPTS–26

agent software

    package SM84UNIX–5

AIX and Sun Solaris, failover protection CONCEPTS–43

AIX

    client software SM84UNIX–19

    configuration of storage subsystems SM84UNIX–20,  
    SM84UNIX–25

    configure the host COPYSERV–25

    direct-attached configuration SM84UNIX–23

    firmware

        requirements SM84UNIX–17

        upgrading SM84UNIX–21

    FlashCopy

        creating a FlashCopy logical drive

        COPYSERV–25

    hardware requirements SM84UNIX–101

    identifying

        controller ID numbers SM84UNIX–33

        device names and bus numbers SM84UNIX–34

        FlashCopy volume types SM84UNIX–39

        logical drives by operating system device names  
        SM84UNIX–37

    NVSRAM

        requirements SM84UNIX–17

AIX (*continued*)

    NVSRAM (*continued*)

        upgrading SM84UNIX–22

    operating system requirements SM84UNIX–13,  
    SM84UNIX–14, SM84UNIX–17

    RDAC driver

        configuring SM84UNIX–26

        installing SM84UNIX–24, SM84UNIX–25,  
        SM84UNIX–26

        requirements SM84UNIX–25, SM84UNIX–101  
        verifying SM84UNIX–25

    requirements

        client software SM84UNIX–19

        firmware SM84UNIX–17

        hardware SM84UNIX–17, SM84UNIX–101

        operating system SM84UNIX–13, SM84UNIX–14

        RDAC driver SM84UNIX–24, SM84UNIX–25,  
        SM84UNIX–101

        software SM84UNIX–101

        system SM84UNIX–101

    restrictions COPYSERV–9, COPYSERV–15,  
    COPYSERV–38, SM84UNIX–7, SM84UNIX–8,  
    SM84UNIX–18

    reusing a FlashCopy logical drive COPYSERV–31

    SAN-attached configuration SM84UNIX–24

    SMclient SM84UNIX–20

    SMruntime SM84UNIX–20

    software requirements SM84UNIX–101

    system requirements SM84UNIX–101

    volumes, redistributing in case of failure  
    SM84UNIX–45

alert destinations CONCEPTS–73

alert destinations

    configuration CONCEPTS–81

    configuring CONCEPTS–81

    setting CONCEPTS–80

alert notification

    configuring alert destinations CONCEPTS–81

    mail server configuration CONCEPTS–80

    overview CONCEPTS–80

    selecting the node CONCEPTS–80

    setting CONCEPTS–82

    setting alert destinations CONCEPTS–80

alert notifications, configuring SM84UNIX–97

alert notifications, setting up INTEL–103

Allocate Capacity panel COPYSERV–13,  
COPYSERV–14

array CONCEPTS–7

arrays, creating INTEL–105

assigning

    IP addresses INTEL–32

    static drive letters INTEL–54

associated logical drives, locating COPYSERV–61

attributes

    dac SM84UNIX–28, SM84UNIX–31

    dar SM84UNIX–26, SM84UNIX–30

    definitions SM84UNIX–26

    hdisk SM84UNIX–29, SM84UNIX–31, SM84UNIX–32

attributes (*continued*)

LUN SM84UNIX–29, SM84UNIX–31, SM84UNIX–32

RDAC driver SM84UNIX–26

audience CONCEPTS–xi, COPYSERV–2, INTEL–xiii

audience of this document SM84UNIX–xi

auto LUN/Array transfer INTEL–123

Auto Volume Transfer (AVT) SM84UNIX–61,  
SM84UNIX–93

Auto-Logical Drive Transfer (ADT) feature  
CONCEPTS–40

automatic discovery option CONCEPTS–21

automatic host discovery INTEL–101

automatic storage subsystem discovery INTEL–100,  
INTEL–101

## B

background media scan CONCEPTS–45

BOOTP server

BOOTP table INTEL–44

sample network INTEL–11

setting up INTEL–38

UNIX INTEL–44

BOOTP-compatible server, setting up INTEL–33

bus numbers and device names, identifying  
SM84UNIX–34

## C

cabling examples

Campus configuration COPYSERV–106

Highest Availability Campus configuration  
COPYSERV–101

Intra-site configuration COPYSERV–111

Remote Mirror Option

Campus configuration COPYSERV–106

cabling instructions CONCEPTS–xi, COPYSERV–xi,  
INTEL–xiii, SM84UNIX–xi

cache flush

described CONCEPTS–44

performance impacts CONCEPTS–44

settings CONCEPTS–44

start percentage CONCEPTS–44

stop flush percentage CONCEPTS–44

cache hit percentage CONCEPTS–91

cache hit

optimizing CONCEPTS–91

percentage CONCEPTS–91

cache mirroring SM84UNIX–32, SM84UNIX–45

cache read-ahead, choosing a multiplier  
CONCEPTS–90

Campus configuration CONCEPTS–57

Campus configuration

cabling examples COPYSERV–106

overview COPYSERV–105

setting up COPYSERV–107

switch zoning COPYSERV–105

capacity

Dynamic Capacity Expansion (DCE) CONCEPTS–39

free CONCEPTS–7

unconfigured CONCEPTS–7

capture state information feature INTEL–105,  
SM84UNIX–98

catastrophic failure SM84UNIX–98

channel protection, using CONCEPTS–63

checklists for the Remote Mirror Option, hardware and  
software COPYSERV–117

client software

AIX SM84UNIX–19, SM84UNIX–20

HP-UX SM84UNIX–48, SM84UNIX–49

HP-UX

installing SM84UNIX–48

package SM84UNIX–4, SM84UNIX–6

Solaris SM84UNIX–65, SM84UNIX–66

cluster configuration

for Windows 2000

creating logical drives INTEL–112

deleting logical drives INTEL–112

for Windows NT

creating logical drives INTEL–110

deleting logical drives INTEL–110

for Windows Server 2003

creating logical drives INTEL–113

deleting logical drives INTEL–113

upgrading from Windows NT 4.0 to Windows 2000  
INTEL–80

upgrading to Windows Server 2003 INTEL–82

cluster server

environment

hardware configuration options INTEL–61

host adapters INTEL–62

installing hardware INTEL–61

installing Storage Manager INTEL–63

installing Windows software INTEL–61

storage subsystems INTEL–63

software

installing INTEL–74

verifying installation INTEL–74

cluster services

configurations SM84UNIX–95

hardware requirements SM84UNIX–99

HP-UX requirements SM84UNIX–99

MC/Service Guard SM84UNIX–99

Solaris requirements SM84UNIX–99,  
SM84UNIX–100

system dependencies SM84UNIX–99

VERITAS Cluster Server SM84UNIX–99

VERITAS Volume Manager SM84UNIX–99

coexisting storage subsystems, managing

CONCEPTS–18, INTEL–18

command line interface (SMcli)

examples CONCEPTS–34

overview CONCEPTS–29

parameters CONCEPTS–30

usage and formatting requirements CONCEPTS–33

using CONCEPTS–29

commands

fget\_config SM84UNIX–36

lsattr SM84UNIX–37

lsdev SM84UNIX–35

comments about this document, how to send

SM84UNIX–xv

- comments, how to send CONCEPTS–xvi,
  - COPYSERV–xvii, INTEL–xx
- complete SM SW installation CONCEPTS–xi,
  - COPYSERV–xi, INTEL–xiii, SM84UNIX–xi
- component failures COPYSERV–142
- components button CONCEPTS–87
- components, storage subsystem CONCEPTS–6
- components
  - software CONCEPTS–8
- Concepts Guide CONCEPTS–xi, CONCEPTS–xiii,
  - COPYSERV–xi, COPYSERV–xiii, INTEL–xiii, INTEL–xv, SM84UNIX–xi, SM84UNIX–xiii
- configuration details, MC Service Guard
  - SM84UNIX–107
- configuration options, installing hardware in a cluster
  - server environment INTEL–61
- configuration recovery INTEL–105, SM84UNIX–98
- configuration types
  - cluster server configuration INTEL–15
  - installing storage manager 7.02 INTEL–13
  - standard (noncluster) configuration INTEL–14
- configuration, storage subsystem CONCEPTS–59
- configuration
  - Highest Availability Campus
    - overview COPYSERV–98
  - mail server CONCEPTS–80
  - sender address CONCEPTS–80
  - software
    - verifying COPYSERV–118
- configurations
  - Campus CONCEPTS–57
  - Campus
    - cabling examples COPYSERV–106
    - overview COPYSERV–105
    - setting up COPYSERV–107
    - switch zoning COPYSERV–105
  - Highest Availability Campus CONCEPTS–57
  - Highest Availability Campus
    - cabling examples COPYSERV–101
    - setting up COPYSERV–102
    - switch zoning COPYSERV–99
  - inappropriate COPYSERV–141
  - Intra-site CONCEPTS–57
  - Intra-site
    - cabling examples COPYSERV–111
    - overview COPYSERV–109
    - setting up COPYSERV–111
    - switch zoning COPYSERV–110
  - supported CONCEPTS–57
- configure storage hardware CONCEPTS–xi,
  - COPYSERV–xi, INTEL–xiii, SM84UNIX–xi
- configure storage subsystems on host CONCEPTS–xi,
  - COPYSERV–xi, INTEL–xiii, SM84UNIX–xi
- configuring heterogeneous hosts INTEL–106
- configuring
  - alert notifications SM84UNIX–97
  - direct-attached SM84UNIX–23, SM84UNIX–55, SM84UNIX–70
  - RDAC driver SM84UNIX–26, SM84UNIX–100
  - SAN-attached SM84UNIX–24, SM84UNIX–55, SM84UNIX–71
  - configuring (*continued*)
    - Solaris with JNI host bus adapter cards
      - SM84UNIX–71, SM84UNIX–72
    - storage subsystems
      - AIX SM84UNIX–20, SM84UNIX–23, SM84UNIX–24
      - HP-UX SM84UNIX–52, SM84UNIX–55
      - procedures SM84UNIX–95
      - Solaris SM84UNIX–69, SM84UNIX–70, SM84UNIX–71
- connect power CONCEPTS–xi, COPYSERV–xi,
  - INTEL–xiii, SM84UNIX–xi
- connection distance CONCEPTS–56, COPYSERV–90
- connectivity and I/O CONCEPTS–55, COPYSERV–88
- connectivity
  - connection distance COPYSERV–90
  - logical drive ownership COPYSERV–88
  - performance considerations COPYSERV–90
- considerations of performance COPYSERV–90
- Contacting Device status CONCEPTS–74
- controller CONCEPTS–6
- controller cache memory
  - data protection CONCEPTS–44
- controller enclosure CONCEPTS–6, CONCEPTS–44
- Controller menu CONCEPTS–25
- controller ownership of logical drives CONCEPTS–55
- controller state capture SM84UNIX–98
- controller transfer rate, optimizing CONCEPTS–90
- controller
  - information record INTEL–133
  - state capture INTEL–105
- controllers
  - firmware SM84UNIX–1, SM84UNIX–25, SM84UNIX–52, SM84UNIX–69
  - ID numbers, identifying SM84UNIX–33
  - IP addresses SM84UNIX–14
- copy failed status COPYSERV–65
- copy in progress status COPYSERV–64
- copy pairs, removing COPYSERV–70
- copy pending status COPYSERV–64
- copy priorities, changing COPYSERV–66
- copy priority
  - setting COPYSERV–54
- Copy Services Guide CONCEPTS–xiii, COPYSERV–xiii,
  - INTEL–xv, SM84UNIX–xiii
- copy services
  - FlashCopy CONCEPTS–48
  - Remote Mirror Option CONCEPTS–48
  - VolumeCopy CONCEPTS–48
- copy status, VolumeCopy COPYSERV–64
- copy status
  - copy failed COPYSERV–65
  - copy in progress COPYSERV–64
  - copy pending COPYSERV–64
- copyback CONCEPTS–45
- Create Copy wizard
  - using COPYSERV–48
- Create Copy Wizard
  - Introduction panel COPYSERV–50
  - selecting the source logical drive COPYSERV–50
  - selecting the target logical drive COPYSERV–51

- Create Copy Wizard (*continued*)
  - setting the copy priority COPYSERV–54
  - the Preview panel COPYSERV–55
  - viewing drives COPYSERV–56
- Create Remote Mirror wizard
  - use to create mirror relationships COPYSERV–121
- creating logical drives, step-by-step CONCEPTS–59
- creating
  - arrays and logical drives INTEL–105
  - logical drives INTEL–109, INTEL–111, INTEL–117
  - storage partitions CONCEPTS–67
- critical event notification CONCEPTS–81
- critical event notification
  - through SNMP CONCEPTS–80
- critical event problem solving CONCEPTS–93
- critical event scenarios COPYSERV–144
- critical events table COPYSERV–144
- critical events, troubleshooting COPYSERV–143
- critical events, VolumeCopy COPYSERV–78
- customer support alert notification
  - how to configure CONCEPTS–80

## D

- dac attributes SM84UNIX–28, SM84UNIX–31
- damaged site, rebuilding COPYSERV–130
- dar attributes SM84UNIX–26, SM84UNIX–30
- data path failover protection CONCEPTS–40
- data protection CONCEPTS–109
- data protection strategies CONCEPTS–37
- data redundancy CONCEPTS–40
- data replication CONCEPTS–54, COPYSERV–85
- data sheet INTEL–133
- data
  - backing up CONCEPTS–50
  - copying for greater access CONCEPTS–49
  - restoring FlashCopy logical drive data CONCEPTS–50
- DCE (dynamic capacity expansion) SM84UNIX–42
- DCE (Dynamic Capacity Expansion) CONCEPTS–39
- default host group, defined CONCEPTS–64, CONCEPTS–68
- default host type, verifying and defining INTEL–106
- default logical drive-to-LUN mapping
  - defined CONCEPTS–65
- default LUN CONCEPTS–64
- default settings for failover protection CONCEPTS–43
- defining default host type INTEL–106
- delayed\_fail SM84UNIX–40
- deleting logical drives INTEL–109, INTEL–111, INTEL–117
- determine management method CONCEPTS–xi, COPYSERV–xi, INTEL–xiii, SM84UNIX–xi
- Device Table CONCEPTS–73
- Device Tree CONCEPTS–73
- devices
  - identification SM84UNIX–33
  - names and bus numbers, identifying SM84UNIX–34
- DHCP server
  - creating a scope INTEL–40
  - installing the DHCP Manager INTEL–40

- DHCP server (*continued*)
  - sample network INTEL–11
  - setting up INTEL–33, INTEL–38
- DHCP/BOOTP server CONCEPTS–14, CONCEPTS–17
- direct (out-of-band) management method SM84UNIX–8
- direct (out-of-band) management method
  - advantages CONCEPTS–14
  - described CONCEPTS–14
  - disadvantages CONCEPTS–14
- direct-attached configuration SM84UNIX–23, SM84UNIX–55, SM84UNIX–70
- direct-management method workaround INTEL–124
- direct-management storage subsystems INTEL–9
- directly managed storage subsystems CONCEPTS–14
- disaster preparation checklist COPYSERV–128
- disaster recovery
  - backing up critical data COPYSERV–127
  - defining storage partitioning COPYSERV–127
  - disaster preparation checklist COPYSERV–128
  - entire site failover procedure COPYSERV–129
  - failover protection using the host clustering software COPYSERV–128
  - overview COPYSERV–127
  - planning for COPYSERV–127
  - preparing the secondary storage subsystem COPYSERV–127
  - rebuild a damaged site procedure COPYSERV–130
  - recovering from storage subsystem failures COPYSERV–129
  - recovering from switch failures COPYSERV–128
  - recreate a mirror relationship procedure COPYSERV–130
- disk access, minimize CONCEPTS–92
- Disk Administrator utility
  - deleting LUNs INTEL–109, INTEL–111
  - disk configuration INTEL–54, INTEL–68
- disk configuration information SM84UNIX–98
- disk space requirements INTEL–25, INTEL–91
- DMP SM84UNIX–6
- DNS table setup INTEL–49
- document organization CONCEPTS–xiii, COPYSERV–xiii, INTEL–xvi
- documentation
  - documents SM84UNIX–1
  - FAST CONCEPTS–xii, CONCEPTS–113, COPYSERV–xii, COPYSERV–147, INTEL–xiv, INTEL–135, SM84UNIX–xii, SM84UNIX–113
  - FAST Storage Manager Version 8.4 CONCEPTS–xiii, COPYSERV–xiii, INTEL–xv, SM84UNIX–xiii
  - files SM84UNIX–1
  - online help SM84UNIX–xiii, SM84UNIX–2, SM84UNIX–96, SM84UNIX–98
  - related CONCEPTS–117, COPYSERV–153, INTEL–139, SM84UNIX–117
  - using CONCEPTS–xv, COPYSERV–xv, INTEL–xviii
  - Web sites INTEL–xviii, SM84UNIX–xiv
- downloading firmware and NVSRAM INTEL–104
- drive CONCEPTS–6
- drive expansion enclosure CONCEPTS–6
- drive firmware, downloading CONCEPTS–76



- Drive menu CONCEPTS–26
- drive, logical CONCEPTS–7
- driver INTEL–91
- drives, logical CONCEPTS–37
- drives, viewing COPYSERV–56
- DVE (Dynamic Logical Drive Expansion)
  - CONCEPTS–39
- DVE (dynamic volume expansion) SM84UNIX–42
- dynamic capacity expansion (DCE) SM84UNIX–42
- Dynamic Capacity Expansion (DCE) CONCEPTS–39
- Dynamic Logical Drive Expansion (DVE)
  - CONCEPTS–39
- dynamic multipathing SM84UNIX–6
- dynamic tracking SM84UNIX–41
- dynamic volume expansion (DVE) SM84UNIX–42

## E

- e-mail address SM84UNIX–xv, SM84UNIX–97
- edition notice SM84UNIX–ii
- elements, storage topology CONCEPTS–67
- emwdata.bin file CONCEPTS–20
- enabling multipath I/O with PV-links SM84UNIX–56
- enabling the Remote Mirror Option COPYSERV–114, COPYSERV–116
- Enterprise Management window CONCEPTS–20
- Enterprise Management window
  - adding devices INTEL–103
  - alert notifications INTEL–103
  - component of SMclient CONCEPTS–8, INTEL–6
  - description SM84UNIX–5
  - Device Table CONCEPTS–73
  - Device Tree CONCEPTS–73
  - help CONCEPTS–1, INTEL–1
  - maintaining storage subsystems CONCEPTS–73
  - monitoring storage subsystems CONCEPTS–73
  - Needs Attention icon CONCEPTS–74
  - online help SM84UNIX–2
  - overall health status pane CONCEPTS–73
  - status icons displayed in CONCEPTS–73
  - synchronizing CONCEPTS–83
- entire site failover procedure COPYSERV–129
- Environmental Services Monitor (ESM) card
  - CONCEPTS–77
- errors, media scan CONCEPTS–46
- errors, secondary logical drive COPYSERV–86
- ESM
  - downloading card firmware CONCEPTS–77
  - overview CONCEPTS–77
- estimated repository logical drive overhead
  - calculating COPYSERV–10
  - sample calculation COPYSERV–10
- estimating logical drive capacity COPYSERV–9
- estimating logical drive capacity
  - considerations COPYSERV–10
- Ethernet MAC address, identifying INTEL–30
- event log CONCEPTS–93, CONCEPTS–109
- Event Monitor
  - and Enterprise Management window, synchronizing CONCEPTS–83
  - disable INTEL–94
  - example CONCEPTS–82
- Event Monitor (*continued*)
  - installing CONCEPTS–81
  - overview CONCEPTS–81
  - setting alert notifications CONCEPTS–82
  - synchronizing the Enterprise Management window CONCEPTS–83
  - verifying installation INTEL–67
- event notification CONCEPTS–109
- event notification, configuring alert destinations
  - CONCEPTS–81
- examples, SMcli CONCEPTS–34
- existing storage subsystem INTEL–15
- existing storage subsystem
  - operating system requirements INTEL–19
  - system hardware requirements INTEL–19
  - uninstall INTEL–92
- expansion units, updating the firmware CONCEPTS–75

## F

- fabric configurations, inappropriate COPYSERV–141
- fabric switches CONCEPTS–11, INTEL–20
- failover protection
  - ADT feature CONCEPTS–40
  - AIX and Sun Solaris CONCEPTS–43
  - default settings CONCEPTS–43
  - Linux CONCEPTS–43
  - Microsoft Windows CONCEPTS–42
  - Novell NetWare CONCEPTS–42
  - operating system specific CONCEPTS–42
  - overview CONCEPTS–40
  - RDAC feature CONCEPTS–42
  - using the host clustering software COPYSERV–128
- failure notification
  - example CONCEPTS–75
  - in the Subsystem Management window CONCEPTS–75
- failure settings COPYSERV–36
- failure settings
  - repository capacity threshold warning level COPYSERV–8
  - repository full policy COPYSERV–9
- failure support
  - cluster services SM84UNIX–99
  - DMP driver SM84UNIX–6
  - RDAC driver SM84UNIX–6
  - redistributing volumes SM84UNIX–45, SM84UNIX–61, SM84UNIX–93
- failure, FlashCopy logical drives COPYSERV–93
- failures, recovering from CONCEPTS–84
- failures
  - component COPYSERV–142
- fast I/O failure SM84UNIX–40
- fast\_fail SM84UNIX–40
- FASTt documentation CONCEPTS–xii, CONCEPTS–113, COPYSERV–xii, COPYSERV–147, INTEL–xiv, INTEL–135, SM84UNIX–xii, SM84UNIX–113
- FASTt Management Suite Java (FASTt-MSJ) INTEL–1
- FASTt MSJ INTEL–1
- FASTt MSJ
  - installation procedure INTEL–95

FAStT MSJ (*continued*)  
   uninstall procedure INTEL–95  
 FAStT SANavigator INTEL–1  
 FAStT Storage Manager 8.4  
   user tasks CONCEPTS–xiii, COPYSERV–xiii,  
   INTEL–xv, SM84UNIX–xiii  
 FAStT Storage Manager Field Tool INTEL–105  
 FAStT Storage Manager  
   related documents CONCEPTS–117,  
   COPYSERV–153, INTEL–139, SM84UNIX–117  
   Version 8.4 Library CONCEPTS–xiii,  
   COPYSERV–xiii, INTEL–xv, SM84UNIX–xiii  
 FAStT-MSJ CONCEPTS–11  
 FAStT, introduction to SM84UNIX–14  
 FAStT200  
   restrictions CONCEPTS–48  
 FAStT600 FC Storage Server library CONCEPTS–116,  
   COPYSERV–152, INTEL–138, SM84UNIX–116  
 FAStT600 Turbo SM84UNIX–2, SM84UNIX–3  
 FAStT600, FAStT600 Turbo  
   restrictions COPYSERV–1  
 FAStT600  
   restrictions CONCEPTS–48, SM84UNIX–3,  
   SM84UNIX–4  
 FAStT700 Storage Server library CONCEPTS–115,  
   COPYSERV–151, INTEL–137, SM84UNIX–115  
 FAStT900 FC Storage Server library CONCEPTS–113,  
   COPYSERV–149, INTEL–135, SM84UNIX–113  
 FC cabling instructions CONCEPTS–xi, COPYSERV–xi,  
   INTEL–xiii, SM84UNIX–xi  
 FC HW maintenance and problem determination guide  
   CONCEPTS–xi, COPYSERV–xi, INTEL–xiii,  
   SM84UNIX–xi  
 FC planning and integration user's guide and service  
   information CONCEPTS–xi, COPYSERV–xi,  
   INTEL–xiii, SM84UNIX–xi  
 FC storage server installation guide CONCEPTS–xi,  
   COPYSERV–xi, INTEL–xiii, SM84UNIX–xi  
 fcsci attributes SM84UNIX–40, SM84UNIX–41  
 feature enable identifier  
   obtaining COPYSERV–4  
 feature key file  
   generating COPYSERV–4  
 feature key, obtaining CONCEPTS–66  
 features, new CONCEPTS–3  
 features  
   disabling COPYSERV–5  
   enabling COPYSERV–3  
   supported COPYSERV–2  
 fget\_config command SM84UNIX–36  
 fibre channel  
   interswitch link CONCEPTS–56, COPYSERV–90  
 Fibre Channel  
   Concepts Guide INTEL–1  
   host adapter INTEL–20  
   managed hub INTEL–21  
   management stations INTEL–22  
   switches INTEL–21  
 fibre-channel I/O  
   access pattern CONCEPTS–90  
   balancing the load CONCEPTS–89  
   request rate optimizing CONCEPTS–90  
   size CONCEPTS–90  
 fibre-channel switches CONCEPTS–12  
 files, defragmenting CONCEPTS–92  
 filesets SM84UNIX–101  
 firmware requirements CONCEPTS–13  
 firmware  
   AIX  
     requirements SM84UNIX–17  
     upgrading SM84UNIX–21  
     verifying SM84UNIX–25  
   description SM84UNIX–1  
   downloading CONCEPTS–75, INTEL–104  
   downloading latest versions SM84UNIX–21,  
   SM84UNIX–53, SM84UNIX–70  
   HP-UX  
     requirements SM84UNIX–47  
     upgrading SM84UNIX–53  
   requirements INTEL–23  
   Solaris  
     requirements SM84UNIX–63  
     upgrading SM84UNIX–70  
   updating in the expansion units CONCEPTS–75  
   updating in the storage subsystem CONCEPTS–75  
   upgrades COPYSERV–147  
 Fixing status CONCEPTS–74  
 FlashCopy  
   AIX  
     creating a FlashCopy logical drive  
     COPYSERV–25  
     reusing a FlashCopy logical drive COPYSERV–31  
   changing logical drive properties COPYSERV–38  
   command line interface COPYSERV–25  
   configure the host  
     AIX instructions COPYSERV–25  
     HP-UX instructions COPYSERV–27  
     Linux instructions COPYSERV–27  
     Solaris instructions COPYSERV–29  
     using the script editor and the command-line  
     interface COPYSERV–25  
   creating a FlashCopy logical drive COPYSERV–19  
   creating a FlashCopy logical drive  
     prepare the host operating system  
     COPYSERV–20  
     using the FlashCopy Logical Drive wizard  
     COPYSERV–20  
   deleting a logical drive COPYSERV–44  
   description CONCEPTS–48  
   disabling a logical drive COPYSERV–39  
   enabling COPYSERV–7  
   estimating capacity  
     considerations COPYSERV–10  
   failure settings  
     estimating capacity COPYSERV–9  
     repository capacity threshold warning level  
     COPYSERV–8  
     repository full policy COPYSERV–9  
   HP-UX  
     creating a FlashCopy logical drive  
     COPYSERV–27

- FlashCopy *(continued)*
  - HP-UX *(continued)*
    - reusing a FlashCopy logical drive COPYSERV–32
  - icon states COPYSERV–36
  - Linux
    - reusing a FlashCopy logical drive COPYSERV–32
  - logical drive CONCEPTS–37
  - Logical Drive wizard
    - Allocate Capacity panel COPYSERV–13, COPYSERV–14
    - Introduction panel COPYSERV–12
    - Preview panel COPYSERV–19
    - Specify Array Parameters panel COPYSERV–15
    - Specify FlashCopy Repository Logical Drive Capacity panel COPYSERV–18
    - Specify Names panel COPYSERV–16
  - logical drive
    - configure the host COPYSERV–24
    - creating COPYSERV–19
    - deleting COPYSERV–44
    - disabling COPYSERV–39
    - mapping to a host COPYSERV–21
    - re-creating COPYSERV–41
    - resizing COPYSERV–42
    - viewing status COPYSERV–36
  - mapping a FlashCopy logical drive to the host COPYSERV–21
  - modification operation COPYSERV–39
  - Novell NetWare
    - reusing a FlashCopy logical drive COPYSERV–35
  - overview CONCEPTS–48, COPYSERV–7, INTEL–2
  - planning a logical drive COPYSERV–8
  - previewing Logical Drive wizard COPYSERV–12
  - re-creating a logical drive COPYSERV–41
  - recovering a missing logical drive CONCEPTS–62
  - repository logical drive CONCEPTS–38
  - repository logical drive becomes full COPYSERV–36
  - repository logical drive
    - calculating estimated overhead COPYSERV–10
    - estimating capacity COPYSERV–9
    - estimating repository life COPYSERV–11
    - properties COPYSERV–36
    - re-sizing COPYSERV–42
    - repository full policy COPYSERV–38
    - setting options COPYSERV–8
    - viewing failure settings COPYSERV–36
  - resizing a logical drive COPYSERV–42
  - reusing a logical drive COPYSERV–31
  - script editor COPYSERV–25
  - script scenarios CONCEPTS–48, COPYSERV–7
  - Solaris
    - reusing a FlashCopy logical drive COPYSERV–34
  - tasks COPYSERV–36
  - use with the Remote Mirror Option COPYSERV–92
  - using with VolumeCopy COPYSERV–71
  - viewing logical drive properties COPYSERV–37
  - viewing progress of a modification operation COPYSERV–39
  - VolumeCopy source logical drive COPYSERV–49, COPYSERV–50

- FlashCopy *(continued)*
  - Windows
    - reusing a FlashCopy logical drive COPYSERV–35
  - form, reader comment CONCEPTS–xvi, COPYSERV–xvii
  - form, readers' comment INTEL–xx
  - free capacity CONCEPTS–7
  - full synchronization CONCEPTS–52, COPYSERV–83

## G

- general troubleshooting
  - Remote Mirror Option COPYSERV–135
- getting help INTEL–xvii
- graphical user interface
  - managing the storage subsystem CONCEPTS–19
- GUI
  - managing the storage subsystem CONCEPTS–19

## H

- hardware checklist COPYSERV–117
- hardware components
  - DHCP server, BOOTP or BOOTP compliant CONCEPTS–12
  - file server CONCEPTS–13
  - host computer CONCEPTS–12
  - management station CONCEPTS–12
  - network-management station CONCEPTS–12
  - storage subsystem CONCEPTS–12
- hardware installation process CONCEPTS–xi, COPYSERV–xi, INTEL–xiii, SM84UNIX–xi
- hardware installation, Remote Mirror Option COPYSERV–95
- hardware maintenance and problem determination CONCEPTS–xi, COPYSERV–xi, INTEL–xiii, SM84UNIX–xi
- hardware requirements
  - AIX SM84UNIX–17, SM84UNIX–101
  - HP-UX SM84UNIX–47, SM84UNIX–103
  - Solaris SM84UNIX–63, SM84UNIX–105
  - VMware ESX Server INTEL–98
- hardware service and support CONCEPTS–xvi, COPYSERV–xvi, INTEL–xix
- hardware
  - Ethernet address INTEL–29
  - installation COPYSERV–98
  - requirements CONCEPTS–11, COPYSERV–95, INTEL–20
- HBA installation and user's guide CONCEPTS–xi, COPYSERV–xi, INTEL–xiii, SM84UNIX–xi
- HBA
  - binding to storage controllers SM84UNIX–73, SM84UNIX–74, SM84UNIX–76, SM84UNIX–77
  - modifying settings SM84UNIX–73, SM84UNIX–75
  - selecting host port
    - AIX SM84UNIX–22
  - setting host port
    - HP-UX SM84UNIX–54
    - Solaris SM84UNIX–79
- hdisk attributes SM84UNIX–29, SM84UNIX–31, SM84UNIX–32

- help SM84UNIX–xiii, SM84UNIX–2, SM84UNIX–96, SM84UNIX–98
- Help menu CONCEPTS–26
- help, getting CONCEPTS–xiv, COPYSERV–xiv
- heterogeneous environment SM84UNIX–95
- heterogeneous hosts
  - configuring INTEL–106
  - defining types CONCEPTS–70, INTEL–107
  - example CONCEPTS–70
  - overview CONCEPTS–70
- high-availability cluster services SM84UNIX–99
- Highest Availability Campus configuration CONCEPTS–57
- Highest Availability Campus configuration
  - cabling examples COPYSERV–101
  - overview COPYSERV–98
  - setting up COPYSERV–102
  - switch zoning COPYSERV–99
- host adapter device driver
  - installation procedure INTEL–95
- host adapters CONCEPTS–11, INTEL–20, INTEL–62
- host agent software
  - starting INTEL–119
  - stopping INTEL–118
- host bus adapter INTEL–91
- host bus adapter installation and user's guide CONCEPTS–xi, COPYSERV–xi, INTEL–xiii, SM84UNIX–xi
- host bus adapters CONCEPTS–12
- host clustering software
  - failover protection COPYSERV–128
- host computer CONCEPTS–3
- host computer defined as topological element CONCEPTS–64
- host computers
  - overview INTEL–12
  - storage management software installation INTEL–51
- host group CONCEPTS–63
- host group, setting up
  - AIX SM84UNIX–22
  - HP-UX SM84UNIX–54
  - Solaris SM84UNIX–79
- host group
  - defined CONCEPTS–64
- host operating systems COPYSERV–96
- host port, defined INTEL–107
- host port
  - defined CONCEPTS–64, CONCEPTS–70
  - discovery of CONCEPTS–64
- host software
  - HP-UX SM84UNIX–50, SM84UNIX–51
  - packages SM84UNIX–6
  - Solaris SM84UNIX–67
- host table setup INTEL–49
- host table
  - pre-installation tasks INTEL–29
  - setup INTEL–45, INTEL–49
- host type CONCEPTS–71
- host-agent (in-band) management method SM84UNIX–7
- host-agent managed storage subsystems CONCEPTS–15
- host-agent management method
  - advantages CONCEPTS–15, INTEL–8
  - described CONCEPTS–15, INTEL–8
  - disadvantages CONCEPTS–16
- host-agent software
  - automatically stops INTEL–115, INTEL–118
  - stopping and restarting INTEL–115
- host
  - VMware ESX Server INTEL–98
- Hot Add utility CONCEPTS–11
- Hot Add utility, using INTEL–117
- hot spare drive
  - configuring CONCEPTS–45
  - defined CONCEPTS–45
- hot\_add utility, using INTEL–114, INTEL–117
- how this document is organized INTEL–xvi
- how to send your comments CONCEPTS–xvi, COPYSERV–xvii, INTEL–xx, SM84UNIX–xv
- HP-UX, failover protection CONCEPTS–43
- HP-UX
  - client software SM84UNIX–48
  - cluster services, requirements SM84UNIX–99
  - configuration of storage subsystems SM84UNIX–52
  - configure the host COPYSERV–27
  - direct-attached configuration SM84UNIX–55
  - firmware
    - requirements SM84UNIX–47
    - upgrading SM84UNIX–53
  - FlashCopy
    - creating a FlashCopy logical drive COPYSERV–27
  - hardware requirements SM84UNIX–47, SM84UNIX–103
  - host software
    - installing SM84UNIX–50
    - requirements SM84UNIX–50
  - NVSRAM
    - requirements SM84UNIX–47
    - upgrading SM84UNIX–53
  - operating system requirements SM84UNIX–13, SM84UNIX–14
  - requirements
    - client software SM84UNIX–48
    - cluster services SM84UNIX–99
    - firmware SM84UNIX–47
    - hardware SM84UNIX–47, SM84UNIX–103
    - host software SM84UNIX–50
    - NVSRAM SM84UNIX–47
    - operating system SM84UNIX–13, SM84UNIX–14
    - software SM84UNIX–103
    - system SM84UNIX–103
  - reusing a FlashCopy logical drive COPYSERV–32
  - SAN-attached configuration SM84UNIX–55
  - SMagent SM84UNIX–50
  - SMclient SM84UNIX–49
  - SMruntime SM84UNIX–49
  - SMutil SM84UNIX–51
  - software requirements SM84UNIX–103
  - system requirements SM84UNIX–103

HP-UX (continued)

volumes, redistributing in case of failure  
SM84UNIX-61

HyperTerminal version SM84UNIX-14

I

I/O access pattern and I/O size CONCEPTS-90

I/O data field CONCEPTS-89

I/O data path protection CONCEPTS-40

I/O request rate, impact from cache flush settings  
CONCEPTS-44

I/O request rate, optimizing CONCEPTS-90

I/O transfer rate, optimizing CONCEPTS-90

IBM address CONCEPTS-xvi, COPYSERV-xvii,  
INTEL-xx

IBM FAST Host Adapter device driver

QL2x00 INTEL-89, INTEL-95

IBM FAST Management Suite Java INTEL-95

IBM Storage Area Network (IBMSAN) driver  
CONCEPTS-10

IBM

address SM84UNIX-xv

director of licensing address SM84UNIX-119

e-mail address SM84UNIX-xv, SM84UNIX-97

icon states COPYSERV-36

identifying

AIX

controller ID numbers SM84UNIX-33

device names and bus numbers SM84UNIX-34

logical drives by operating system device names  
SM84UNIX-37

in-band (host-agent) management method

SM84UNIX-7

in-band management method INTEL-8

information from the World Wide Web CONCEPTS-xv,  
COPYSERV-xv, INTEL-xviii

information record, storage subsystem and controller  
INTEL-133

information, getting CONCEPTS-xiv, COPYSERV-xiv

install and verify SM SW on host and workstation  
CONCEPTS-xi, COPYSERV-xi, INTEL-xiii,  
SM84UNIX-xi

install network hardware CONCEPTS-xi,  
COPYSERV-xi, INTEL-xiii, SM84UNIX-xi

install storage expansion unit CONCEPTS-xi,  
COPYSERV-xi, INTEL-xiii, SM84UNIX-xi

install storage server/RAID enclosures in rack  
CONCEPTS-xi, COPYSERV-xi, INTEL-xiii,  
SM84UNIX-xi

installation INTEL-91

installation and support OS guides CONCEPTS-xi,  
COPYSERV-xi, INTEL-xiii, SM84UNIX-xi

installation guide, storage server CONCEPTS-xi,  
COPYSERV-xi, INTEL-xiii, SM84UNIX-xi

installation planning CONCEPTS-xi, COPYSERV-xi,  
INTEL-xiii, SM84UNIX-xi

installation process CONCEPTS-xi, COPYSERV-xi,  
INTEL-xiii, SM84UNIX-xi

installation, Remote Mirror Option COPYSERV-95

installation, Remote Mirror Option

hardware requirements COPYSERV-95

installation, Remote Mirror Option (continued)

host operating systems COPYSERV-96

pre-installation considerations COPYSERV-95

site preparation COPYSERV-95

software requirements COPYSERV-96

installation

completing INTEL-99

hardware COPYSERV-98

preparation INTEL-27

preparing a network INTEL-28

Remote Mirror Option

Campus configuration COPYSERV-105

hardware COPYSERV-98

Highest Availability Campus configuration  
COPYSERV-98

switch zoning overview COPYSERV-96

software COPYSERV-114

software

verifying COPYSERV-118

switch zoning overview COPYSERV-96

types

hardware environments INTEL-15

new storage subsystem INTEL-15

installing

AIX

client software SM84UNIX-19, SM84UNIX-20

RDAC driver SM84UNIX-24, SM84UNIX-25

client software

AIX SM84UNIX-19

HP-UX SM84UNIX-48

SMclient SM84UNIX-20, SM84UNIX-49,  
SM84UNIX-66

SMruntime SM84UNIX-20, SM84UNIX-49,  
SM84UNIX-65

Solaris SM84UNIX-65

cluster server configuration INTEL-15

cluster server software INTEL-74

DNS/DHCP Management Console INTEL-42

hardware in a cluster server environment INTEL-61

host software

HP-UX SM84UNIX-50

SMagent SM84UNIX-50, SM84UNIX-67

SMutil SM84UNIX-51, SM84UNIX-68

Solaris SM84UNIX-67

HP-UX

client software SM84UNIX-48, SM84UNIX-49

host software SM84UNIX-50

SMutil SM84UNIX-51

process diagram for SM84UNIX-10

RDAC INTEL-55, INTEL-68, INTEL-69

sequence of SM84UNIX-6

SMagent INTEL-57, INTEL-71

SMagent

in a standard configuration INTEL-70

SMclient INTEL-66

SMutil INTEL-59, INTEL-73

software components

configuration types INTEL-13

host computers INTEL-12

management stations INTEL-12

- installing *(continued)*
  - software
    - in a standard configuration INTEL–51, INTEL–54
    - new installation process INTEL–51
    - SMclient INTEL–52
    - verifying SMclient installation INTEL–53
    - verifying the Event Monitor installation INTEL–53
  - Solaris
    - client software SM84UNIX–65, SM84UNIX–66
    - host software SM84UNIX–67, SM84UNIX–68
    - RDAC driver SM84UNIX–80
  - storage management software INTEL–51, INTEL–65
  - Storage Manager in a cluster environment INTEL–63
  - VMware ESX Server configuration INTEL–97
  - Windows software in a cluster server environment INTEL–61
- Intra-site configuration CONCEPTS–57
- Intra-site configuration
  - cabling examples COPYSERV–111
  - overview COPYSERV–109
  - setting up COPYSERV–111
  - switch zoning COPYSERV–110
- IP addresses for FASiT controllers SM84UNIX–14
- IP addresses, assigning INTEL–32

## J

- JNI
  - cards SM84UNIX–71, SM84UNIX–72
  - installing driver SM84UNIX–72
  - modifying HBA settings SM84UNIX–73, SM84UNIX–75
  - settings SM84UNIX–109

## L

- limitations
  - Linux operating system INTEL–129
  - NetWare operating system INTEL–127
  - Storage Manager 8.4 INTEL–4
  - VMware ESX Server operating system INTEL–131
  - Window operating system INTEL–121
- link interruptions COPYSERV–86
- Linux failover driver CONCEPTS–11
- Linux limitations INTEL–129
- Linux software Storage Manager INTEL–7
- Linux
  - configure the host COPYSERV–27
  - failover protection CONCEPTS–43
  - installation process INTEL–92
  - reusing a FlashCopy logical drive COPYSERV–32
  - software installation readme INTEL–91
  - software packages
    - installing IBM FASiT Management Suite Java INTEL–95
    - installing Storage Manager 8.4 client INTEL–93, INTEL–94
    - installing the IBM Host Adapter device driver (qla2200.o or qla2300.o) INTEL–95
- load balancing, VMware ESX Server INTEL–131
- logical drive CONCEPTS–7
- logical drive failure COPYSERV–93

- logical drive group, capacity of CONCEPTS–40
- logical drive ownership COPYSERV–88
- logical drive types
  - primary CONCEPTS–50, COPYSERV–81
  - secondary CONCEPTS–50, COPYSERV–81
- Logical Drive wizard
  - Allocate Capacity panel COPYSERV–13, COPYSERV–14
  - Introduction panel COPYSERV–12
  - Preview panel COPYSERV–19
  - previewing COPYSERV–12
  - Specify Array Parameters panel COPYSERV–15
  - Specify FlashCopy Repository Logical Drive Capacity panel COPYSERV–18
  - Specify Names panel COPYSERV–16
- logical drive-to-LUN mapping
  - default CONCEPTS–65
  - defined CONCEPTS–64, CONCEPTS–68
  - specific CONCEPTS–64
- logical drive-to-LUN terminology
  - default host group CONCEPTS–64
  - host CONCEPTS–64
  - host group CONCEPTS–64
  - host port CONCEPTS–64
  - mapping CONCEPTS–64, CONCEPTS–65
  - storage partition CONCEPTS–63
  - storage partition topology CONCEPTS–63
  - storage partitions
    - mapping preference CONCEPTS–65
- logical drive
  - becomes full COPYSERV–36
  - configure the host COPYSERV–24
  - configure the host
    - AIX instructions COPYSERV–25
    - HP-UX instructions COPYSERV–27
    - Linux instructions COPYSERV–27
    - Solaris instructions COPYSERV–29
    - using the script editor and the command-line interface COPYSERV–25
  - create using the FlashCopy Logical Drive wizard COPYSERV–20
  - creating COPYSERV–19
  - deleting COPYSERV–44
  - disabling COPYSERV–39
  - errors COPYSERV–86
  - expected usage CONCEPTS–62
  - link interruptions COPYSERV–86
  - mapping a FlashCopy logical drive to the host COPYSERV–21
  - modification operation COPYSERV–39
  - modification priority setting CONCEPTS–91
  - planning COPYSERV–8
  - prepare the host operating system COPYSERV–20
  - properties COPYSERV–37
  - properties, changing COPYSERV–38
  - re-creating COPYSERV–41
  - resizing COPYSERV–42
  - reusing COPYSERV–31
  - reusing
    - AIX instructions COPYSERV–31
    - HP-UX instructions COPYSERV–32

- logical drive *(continued)*
  - reusing *(continued)*
    - Linux instructions COPYSERV–32
    - Novell NetWare instructions COPYSERV–35
    - Solaris instructions COPYSERV–34
    - Windows instructions COPYSERV–35
  - viewing status COPYSERV–36
- logical drives
  - adding or deleting INTEL–109
  - base CONCEPTS–48
  - connectivity and I/O CONCEPTS–55
  - controller ownership within storage subsystems CONCEPTS–55
  - creating INTEL–105, INTEL–109, INTEL–111, INTEL–117
  - creating for mirror relationships COPYSERV–121
  - creating from free or unconfigured capacity CONCEPTS–59
  - creating step-by-step CONCEPTS–59
  - data replication CONCEPTS–54
  - deleting COPYSERV–125, INTEL–109, INTEL–111, INTEL–117
  - Dynamic Logical Drive Expansion (DVE) CONCEPTS–39
  - FlashCopy CONCEPTS–37, CONCEPTS–48
  - FlashCopy repository CONCEPTS–38
  - groups CONCEPTS–39
  - mirror relationship CONCEPTS–54
  - mirror repository CONCEPTS–38, CONCEPTS–53, COPYSERV–84
  - overview CONCEPTS–37
  - primary CONCEPTS–38
  - recovering CONCEPTS–79
  - repository CONCEPTS–48
  - secondary CONCEPTS–38
  - source CONCEPTS–38
  - standard CONCEPTS–37
  - supported INTEL–25
  - target CONCEPTS–38
  - VolumeCopy CONCEPTS–49
- Logical view CONCEPTS–73
- logical view, subsystem-management window CONCEPTS–22
- logical volume labels, VMware ESX Server INTEL–131
- logical volumes unrecognized, VMware ESX Server INTEL–131
- Logical/Physical View CONCEPTS–22
- loop settings SM84UNIX–73, SM84UNIX–75
- lsattr command SM84UNIX–37
- lsdev command SM84UNIX–35
- LUN attributes SM84UNIX–31
- LUN
  - address space CONCEPTS–64
  - defined CONCEPTS–64
- LUNs
  - and access volumes SM84UNIX–8
  - attributes SM84UNIX–29, SM84UNIX–31, SM84UNIX–32

## M

- MAC address, Ethernet INTEL–30
- machine types and supported software CONCEPTS–1
- machine types, supported INTEL–4
- mail server configuration CONCEPTS–80
- make FC connections CONCEPTS–xi, COPYSERV–xi, INTEL–xiii, SM84UNIX–xi
- managed hub CONCEPTS–11, INTEL–20
- management domain, populating CONCEPTS–107
- management domain, populating
  - automatic discovery option CONCEPTS–21
  - overview CONCEPTS–20
  - using add device CONCEPTS–21
- management method
  - direct (out-of-band) SM84UNIX–8
  - host-agent (in-band) SM84UNIX–7
- management methods for storage subsystem
  - direct (out-of-band) management method CONCEPTS–14
  - host-agent management method CONCEPTS–15
- management methods
  - direct INTEL–9
  - host-agent INTEL–8
  - in-band INTEL–8
  - storage subsystem INTEL–7
- management station CONCEPTS–3, CONCEPTS–11, SM84UNIX–1
- management station
  - See *also* storage management station
  - VMware ESX Server INTEL–97
- management stations
  - hardware requirements INTEL–20
  - software installation INTEL–12
  - storage management software installation INTEL–51
- management, storage subsystem
  - direct (out-of-band) CONCEPTS–14
  - host-agent CONCEPTS–15
  - overview CONCEPTS–13
- managing coexisting storage subsystems INTEL–18
- Mappings menu CONCEPTS–24
- Mappings View CONCEPTS–23
- Mappings view, described CONCEPTS–67
- Mappings window
  - overview CONCEPTS–67
  - Topology view CONCEPTS–69
  - views in the CONCEPTS–67
- MC Service Guard SM84UNIX–107
- MC/Service Guard SM84UNIX–99
- media scan
  - changing settings CONCEPTS–45
  - errors reported CONCEPTS–46
  - overview CONCEPTS–45
  - settings CONCEPTS–47
- medical imaging applications CONCEPTS–41
- Medium Access Control (MAC) address, Ethernet INTEL–30
- menus, Subsystem Management window CONCEPTS–23
- Microsoft Virtual Machine (MSVM) CONCEPTS–11
- Microsoft Virtual Machine, installing INTEL–6

- Microsoft Windows
  - failover protection CONCEPTS–42
- mirror relationship, recreating COPYSERV–130
- mirror relationships CONCEPTS–54, COPYSERV–85
- mirror relationships
  - creating COPYSERV–121
  - creating logical drives COPYSERV–121
  - creating using the Wizard COPYSERV–121
  - deleting primary and secondary logical drives COPYSERV–125
  - displaying the storage subsystem profile COPYSERV–123
  - maintaining COPYSERV–123
  - Mirroring Properties window COPYSERV–124
  - removing COPYSERV–125
  - synchronization priority level COPYSERV–124
  - View Associated Components window COPYSERV–124
  - viewing COPYSERV–123
- mirror repository CONCEPTS–50
- mirror repository logical drive CONCEPTS–38
- mirror repository logical drives CONCEPTS–53
- mirror repository
  - logical drives COPYSERV–84
  - mirror relationships COPYSERV–85
  - overview COPYSERV–81
- Mirroring Properties window COPYSERV–124
- missing logical drives, viewing and recovering CONCEPTS–62, CONCEPTS–79
- multi-user environments CONCEPTS–41
- multimedia applications CONCEPTS–41
- multipath I/O with PV-links SM84UNIX–56

## N

- naming storage subsystems INTEL–29, INTEL–104
- Needs Attention icon CONCEPTS–74
- Needs Attention status CONCEPTS–74
- Netfinity FC Cabling Instructions CONCEPTS–117, COPYSERV–153, INTEL–139, SM84UNIX–117
- NetWare DHCP server
  - adding Novell DNS/DHCP Services INTEL–42
  - creating a subnet object INTEL–43
  - creating IP address objects INTEL–43
  - creating subnet address ranges INTEL–43
  - creating the DHCP server object INTEL–42
  - installing the DNS/DHCP Management Console INTEL–42
  - setting up INTEL–41
  - starting the DHCP server INTEL–44
- NetWare software requirements INTEL–24
- NetWare software Storage Manager INTEL–7
- network installation, preparing INTEL–28
- new features CONCEPTS–3, INTEL–1
- new storage subsystem INTEL–15
- notes, important CONCEPTS–120, COPYSERV–156, INTEL–142
- notice, edition SM84UNIX–ii
- notices CONCEPTS–xiv, CONCEPTS–119, COPYSERV–xiv, COPYSERV–155, INTEL–xvii, INTEL–141
- notices
  - general SM84UNIX–119

- notification of events CONCEPTS–109
- notification
  - alert CONCEPTS–80
  - configuring alert destinations CONCEPTS–81
  - failure CONCEPTS–74
  - selecting the node CONCEPTS–80
  - setting alert destinations CONCEPTS–80
  - setting alert notifications CONCEPTS–82
- Novell NetWare
  - failover protection CONCEPTS–42
  - limitations INTEL–127
  - reusing a FlashCopy logical drive COPYSERV–35
- NVSRAM, downloading CONCEPTS–76, INTEL–104
- NVSRAM
  - AIX
    - requirements SM84UNIX–17, SM84UNIX–18
    - downloading latest versions SM84UNIX–21, SM84UNIX–53, SM84UNIX–70
  - HP-UX
    - requirements SM84UNIX–47
    - upgrading SM84UNIX–53
  - Solaris
    - requirements SM84UNIX–63
    - upgrading SM84UNIX–70

## O

- online help CONCEPTS–xi, COPYSERV–xi, INTEL–xiii, SM84UNIX–xi, SM84UNIX–xiii, SM84UNIX–2, SM84UNIX–96, SM84UNIX–98
- online help systems
  - configuring storage partitions CONCEPTS–108
  - configuring storage subsystems CONCEPTS–107
  - Enterprise Management window CONCEPTS–108
  - event notification CONCEPTS–109
  - miscellaneous system administration CONCEPTS–110
  - performance and tuning CONCEPTS–111
  - populating a management domain CONCEPTS–107
  - protecting data CONCEPTS–109
  - recovering from problems CONCEPTS–110
  - security CONCEPTS–110
  - Subsystem Management window CONCEPTS–107, CONCEPTS–108
  - using a script editor CONCEPTS–108
- operating system requirements COPYSERV–96
- operating system specific failover protection CONCEPTS–42
- operating system support INTEL–127
- operating system
  - AIX SM84UNIX–13, SM84UNIX–14, SM84UNIX–17, SM84UNIX–101
  - HP-UX SM84UNIX–13, SM84UNIX–14, SM84UNIX–103
  - HP-UX
    - requirements SM84UNIX–47
  - limitations INTEL–121
  - Linux INTEL–129
  - requirements INTEL–23
  - requirements
    - AIX SM84UNIX–17



- operating system *(continued)*
  - requirements *(continued)*
    - HP-UX SM84UNIX-47
    - Solaris SM84UNIX-63
  - Solaris SM84UNIX-13, SM84UNIX-14, SM84UNIX-105
  - Solaris
    - requirements SM84UNIX-63
  - support INTEL-121
  - VMware ESX Server INTEL-131
- organization of the document CONCEPTS-xiii, COPYSERV-xiii
- out-of-band (direct) management method SM84UNIX-8
- overall health status CONCEPTS-73
- overview of heterogeneous hosts SM84UNIX-95
- overview
  - switch zoning COPYSERV-96
- ownership of logical drives COPYSERV-88
- ownership, preferred controller CONCEPTS-43

## P

- parameters
  - SMcli CONCEPTS-30
- parity CONCEPTS-40
- password protection, configuring CONCEPTS-58
- performance and tuning CONCEPTS-111
- performance considerations CONCEPTS-56, COPYSERV-90
- performance monitor CONCEPTS-89
- performance, subsystem COPYSERV-54
- Persistent Reservations, managing CONCEPTS-57
- physical view, subsystem-management window CONCEPTS-22
- planning installation, NetWare INTEL-27
- point-in-time (PIT) image CONCEPTS-48
- power outage CONCEPTS-44
- pre-installation considerations, Remote Mirror Option COPYSERV-95
- preferred controller ownership CONCEPTS-43
- premium feature INTEL-2
- premium feature key COPYSERV-81
- premium feature
  - enabling COPYSERV-4
  - FlashCopy INTEL-107
  - key INTEL-108
  - Remote Mirror Option INTEL-108
  - role reversals COPYSERV-72
- premium features status
  - viewing COPYSERV-4
- premium features
  - copy services SM84UNIX-2
  - disabling COPYSERV-5
  - enabling COPYSERV-3, SM84UNIX-4
  - FlashCopy CONCEPTS-48, COPYSERV-7, COPYSERV-92
  - Remote Mirror Option CONCEPTS-48
  - storage partitioning COPYSERV-91, SM84UNIX-3
  - use with the Remote Mirror option COPYSERV-91
  - using with VolumeCopy COPYSERV-70
  - VolumeCopy CONCEPTS-48
- preparation, site COPYSERV-95

- prepare for SM SW installation CONCEPTS-xi, COPYSERV-xi, INTEL-xiii, SM84UNIX-xi
- prepare network connection CONCEPTS-xi, COPYSERV-xi, INTEL-xiii, SM84UNIX-xi
- preparing a network installation INTEL-28
- preparing for installation
  - NetWare INTEL-27
- prerequisites
  - AIX
    - client software SM84UNIX-19
    - firmware SM84UNIX-17
    - hardware SM84UNIX-17, SM84UNIX-101
    - operating system SM84UNIX-13, SM84UNIX-14
    - RDAC driver SM84UNIX-24, SM84UNIX-25, SM84UNIX-101
    - software SM84UNIX-101
    - system SM84UNIX-101
  - cluster services SM84UNIX-99
- HP-UX
  - client software SM84UNIX-48
  - cluster services SM84UNIX-99
  - firmware SM84UNIX-47
  - hardware SM84UNIX-47, SM84UNIX-103
  - host software SM84UNIX-50
  - NVSRAM SM84UNIX-47
  - operating system SM84UNIX-13, SM84UNIX-14
  - software SM84UNIX-103
  - system SM84UNIX-103
- Solaris
  - client software SM84UNIX-65
  - cluster services SM84UNIX-99, SM84UNIX-100
  - firmware SM84UNIX-63
  - hardware SM84UNIX-63, SM84UNIX-105
  - host software SM84UNIX-67
  - NVSRAM SM84UNIX-63
  - operating system SM84UNIX-13, SM84UNIX-14
  - RDAC driver SM84UNIX-67
  - software SM84UNIX-105
  - system SM84UNIX-105
- Preview panel COPYSERV-19
- primary and secondary logical drives, deleting COPYSERV-125
- primary and secondary logical drives
  - reversing roles COPYSERV-131
- primary logical drive CONCEPTS-38
- priority setting, modification CONCEPTS-91
- problem recovery CONCEPTS-110
- problem resolution
  - inappropriate fabric configurations COPYSERV-141
  - Remote Mirror critical event scenarios COPYSERV-144
  - Remote Mirror critical events COPYSERV-143
  - Remote Mirror critical events table COPYSERV-144
  - Remote Mirror Option COPYSERV-135, COPYSERV-141
  - storage subsystem component failures COPYSERV-142
  - switch issues COPYSERV-141
- problem solving, critical event CONCEPTS-93
- procedure
  - entire site failover COPYSERV-129

- procedure *(continued)*
  - rebuild a damaged site COPYSERV–130
  - recreate a mirror relationship COPYSERV–130
- products, developed SM84UNIX–119
- properties, viewing COPYSERV–65
- properties
  - changing COPYSERV–38
- protecting data in the controller cache memory
  - CONCEPTS–44
- PV-links SM84UNIX–56

## Q

- QLremote CONCEPTS–11
- quick reference status
  - Contacting Device CONCEPTS–74
  - Fixing CONCEPTS–74
  - Optimal CONCEPTS–74
  - Optimal status CONCEPTS–74
  - Unresponsive CONCEPTS–74

## R

- RAID controller enclosure unit installation guide
  - CONCEPTS–xi, COPYSERV–xi, INTEL–xiii, SM84UNIX–xi
- RAID level
  - and channel protection CONCEPTS–63
  - application behavior CONCEPTS–91
  - choosing CONCEPTS–91
  - configurations CONCEPTS–41
  - data redundancy CONCEPTS–40
  - described CONCEPTS–40
- RAID-0
  - described CONCEPTS–41
  - drive failure consequences CONCEPTS–41
- RAID-1
  - described CONCEPTS–41
  - drive failure consequences CONCEPTS–41
- RAID-3
  - described CONCEPTS–41
  - drive failure consequences CONCEPTS–41
- RAID-5
  - described CONCEPTS–41
  - drive failure consequences CONCEPTS–41
- RDAC driver
  - AIX
    - configuring SM84UNIX–26
    - installing SM84UNIX–25, SM84UNIX–26
    - requirements SM84UNIX–25, SM84UNIX–101
  - attributes SM84UNIX–26
  - description SM84UNIX–6
  - IDs SM84UNIX–100
  - installing SM84UNIX–80
  - Solaris
    - installing SM84UNIX–80
    - requirements SM84UNIX–67
- RDAC feature CONCEPTS–42
- RDAC
  - assigning static drive letters INTEL–54, INTEL–68
  - disk space requirements INTEL–23
  - installation INTEL–55, INTEL–69

- RDAC *(continued)*
  - installing on Windows 2000 INTEL–54, INTEL–68
  - overview INTEL–6
  - verifying installation INTEL–55, INTEL–69
- read-only attribute, setting COPYSERV–67
- reader comment form SM84UNIX–xv
- reader comment form processing CONCEPTS–xvi, COPYSERV–xvii
- readers' comment form processing INTEL–xx
- readme file CONCEPTS–1, SM84UNIX–1
- reconstruction CONCEPTS–45
- recording subsystem names INTEL–30
- recover configuration INTEL–105, SM84UNIX–98
- Recovery Guru window
  - described CONCEPTS–84
- Recovery Guru
  - Recovery Procedure CONCEPTS–84
  - Summary area CONCEPTS–84
- recovery
  - backing up critical data COPYSERV–127
  - defining storage partitioning COPYSERV–127
  - disaster preparation checklist COPYSERV–128
  - entire site failover procedure COPYSERV–129
  - failover protection using the host clustering software COPYSERV–128
  - overview COPYSERV–127
  - planning for COPYSERV–127
  - preparing the secondary storage subsystem COPYSERV–127
  - rebuild a damaged site procedure COPYSERV–130
  - recovering from storage subsystem failures COPYSERV–129
  - recovering from switch failures COPYSERV–128
  - recreate a mirror relationship COPYSERV–130
- Red Hat Linux Advanced Server INTEL–xiii
- Red Hat Linux
  - software packages
    - installing Storage Manager 7 client INTEL–93
- redistributing volumes in case of failure SM84UNIX–45, SM84UNIX–61, SM84UNIX–93
- redundancy of fibre-channel arbitrated loops
  - CONCEPTS–63
- redundant disk array controller (RDAC) INTEL–6, INTEL–54
- Redundant Disk Array Controller (RDAC)
  - CONCEPTS–10
- Redundant disk array controller (RDAC) feature
  - CONCEPTS–42
- reference, task CONCEPTS–107
- Remote Mirror Option
  - activating COPYSERV–114, COPYSERV–116
  - basic concepts COPYSERV–81
  - cabling examples
    - Campus configuration COPYSERV–106
    - Highest Availability Campus configuration COPYSERV–101
    - Intra-site configuration COPYSERV–111
  - Campus configuration
    - cabling examples COPYSERV–106
    - overview COPYSERV–105
    - setting up COPYSERV–107

Remote Mirror Option *(continued)*

- Campus configuration *(continued)*
  - switch zoning COPYSERV-105
- changing the synchronization priority level COPYSERV-124
- configurations
  - Campus CONCEPTS-57
  - Highest Availability Campus CONCEPTS-57
  - Intra-site CONCEPTS-57
- connection distance COPYSERV-90
- connectivity and I/O CONCEPTS-55, COPYSERV-88
- controller ownership of logical drives CONCEPTS-55
- creating logical drives
  - mirror relationships COPYSERV-121
- creating mirror relationships COPYSERV-121
- creating mirror relationships
  - using the Wizard COPYSERV-121
- critical event scenarios COPYSERV-144
- critical events COPYSERV-143
- critical events table COPYSERV-144
- data replication CONCEPTS-54, COPYSERV-85
- deactivating COPYSERV-126
- deleting primary and secondary logical drives COPYSERV-125
- description CONCEPTS-48
- disabling COPYSERV-126
- disaster recovery
  - backing up critical data COPYSERV-127
  - changing a primary logical drive to a secondary drive COPYSERV-132
  - changing a secondary logical drive to a primary drive COPYSERV-131
  - defining storage partitioning COPYSERV-127
  - disaster preparation checklist COPYSERV-128
  - entire site failover procedure COPYSERV-129
  - failover protection using the host clustering software COPYSERV-128
  - overview COPYSERV-127
  - planning for COPYSERV-127
  - preparing the secondary storage subsystem COPYSERV-127
  - rebuilding a damaged site COPYSERV-130
  - recovering from storage subsystem failures COPYSERV-129
  - recovering from switch failures COPYSERV-128
  - recreating a mirror relationship COPYSERV-130
  - reversing the roles of primary and secondary logical drives COPYSERV-131
- displaying the storage subsystem profile COPYSERV-123
- enabling COPYSERV-114, COPYSERV-116
- general switch troubleshooting COPYSERV-141
- general troubleshooting COPYSERV-135
- hardware checklist COPYSERV-117
- hardware installation COPYSERV-95, COPYSERV-98
- hardware requirements COPYSERV-95
- Highest Availability Campus configuration
  - cabling examples COPYSERV-101
  - overview COPYSERV-98

Remote Mirror Option *(continued)*

- Highest Availability Campus configuration *(continued)*
  - setting up COPYSERV-102
  - switch zoning COPYSERV-99
- host operating systems COPYSERV-96
- inappropriate fabric configurations COPYSERV-141
- installation
  - hardware COPYSERV-98
  - hardware requirements COPYSERV-95
  - host operating systems COPYSERV-96
  - site preparation COPYSERV-95
  - software COPYSERV-114
  - software requirements COPYSERV-96
  - switch zoning overview COPYSERV-96
- Intra-site configuration
  - cabling examples COPYSERV-111
  - overview COPYSERV-109
  - setting up COPYSERV-111
  - switch zoning COPYSERV-110
- link interruptions COPYSERV-86
- logical drive ownership COPYSERV-88
- logical drive types CONCEPTS-50
- maintaining mirror relationships COPYSERV-123
- mirror relationships CONCEPTS-54, COPYSERV-85
- mirror repository logical drives CONCEPTS-53, COPYSERV-84
- Mirroring Properties window COPYSERV-124
- overview CONCEPTS-50, COPYSERV-81, INTEL-2 overview
  - Campus configuration COPYSERV-105
  - Highest Availability Campus configuration COPYSERV-98
  - Intra-site configuration COPYSERV-109
- performance considerations CONCEPTS-56, COPYSERV-90
- pre-installation considerations COPYSERV-95
- primary and secondary logical drives COPYSERV-81
- removing mirror relationships COPYSERV-125
- secondary logical drive errors COPYSERV-86
- setting up
  - Campus configuration COPYSERV-107
  - Highest Availability Campus configuration COPYSERV-102
  - Intra-site configuration COPYSERV-111
- site preparation COPYSERV-95
- software checklist COPYSERV-118
- software installation COPYSERV-95, COPYSERV-114
- software installation and configuration
  - verifying COPYSERV-118
- software requirements COPYSERV-96
- status, determining COPYSERV-115
- storage subsystem component failures COPYSERV-142
- storage subsystem connection distance CONCEPTS-56
- storage subsystem profile
  - Mirroring Properties window COPYSERV-124
  - overview COPYSERV-123

- Remote Mirror Option *(continued)*
  - storage subsystem profile *(continued)*
    - View Associated Components window COPYSERV-124
  - supported configurations CONCEPTS-57
  - switch zoning overview COPYSERV-96
  - switch zoning
    - Campus configuration COPYSERV-105
    - Highest Availability Campus configuration COPYSERV-99
    - Intra-site configuration COPYSERV-110
  - troubleshooting COPYSERV-135
  - use with FlashCopy COPYSERV-92
  - use with other premium features COPYSERV-91
  - use with storage partitioning COPYSERV-91
  - using COPYSERV-121
  - using with VolumeCopy COPYSERV-71
  - verifying software installation and configuration COPYSERV-118
  - View Associated Components window COPYSERV-124
  - viewing mirror relationships COPYSERV-123
- remote mirror setup, logical drive types CONCEPTS-50
- removing previous versions of Storage Manager AIX SM84UNIX-19
- renaming storage subsystem SM84UNIX-97
- replication of data CONCEPTS-54, COPYSERV-85
- repository capacity threshold warning level COPYSERV-8
- repository full policy COPYSERV-9
- repository life, estimating COPYSERV-11
- repository logical drive
  - calculating estimated overhead COPYSERV-10
  - estimating repository life COPYSERV-11
  - setting options COPYSERV-8
- requirements
  - AIX
    - client software SM84UNIX-19
    - firmware SM84UNIX-17
    - hardware SM84UNIX-17, SM84UNIX-101
    - operating system SM84UNIX-13, SM84UNIX-14
    - RDAC driver SM84UNIX-24, SM84UNIX-25, SM84UNIX-101
    - software SM84UNIX-101
    - system SM84UNIX-101
  - cluster services SM84UNIX-99
  - disk space INTEL-25, INTEL-91
  - firmware CONCEPTS-13, INTEL-23
  - hardware CONCEPTS-11, INTEL-20
  - host operating systems COPYSERV-96
  - HP-UX
    - client software SM84UNIX-48
    - cluster services SM84UNIX-99
    - firmware SM84UNIX-47
    - hardware SM84UNIX-47, SM84UNIX-103
    - host software SM84UNIX-50
    - NVSRAM SM84UNIX-47
    - operating system SM84UNIX-13, SM84UNIX-14
    - software SM84UNIX-103
    - system SM84UNIX-103
  - Linux INTEL-25, INTEL-91

- requirements *(continued)*
  - SMcli CONCEPTS-33
  - software INTEL-25, INTEL-91
  - Solaris
    - client software SM84UNIX-65
    - cluster services SM84UNIX-99, SM84UNIX-100
    - firmware SM84UNIX-63
    - hardware SM84UNIX-63, SM84UNIX-105
    - host software SM84UNIX-67
    - NVSRAM SM84UNIX-63
    - operating system SM84UNIX-13, SM84UNIX-14
    - RDAC driver SM84UNIX-67
    - software SM84UNIX-105
    - system SM84UNIX-105
  - system INTEL-19
  - Windows INTEL-23
- resources
  - documents SM84UNIX-1
  - e-mail address SM84UNIX-xv, SM84UNIX-97
  - files SM84UNIX-1
  - online help SM84UNIX-xiii, SM84UNIX-2, SM84UNIX-96, SM84UNIX-98
  - Web sites INTEL-xviii, SM84UNIX-xiv, SM84UNIX-4
- restrictions, VolumeCopy COPYSERV-63
- restrictions
  - AIX SM84UNIX-7, SM84UNIX-8, SM84UNIX-18
  - FAST600 SM84UNIX-3, SM84UNIX-4
  - FAST600 and FAST600 Turbo COPYSERV-1
  - FAST600, FAST200 CONCEPTS-48
  - in-band management SM84UNIX-7
- reviewing a sample network INTEL-11
- role reversal
  - changing a primary logical drive to a secondary drive COPYSERV-132
  - changing a secondary logical drive to a primary drive COPYSERV-131
  - primary and secondary logical drives COPYSERV-131
- role reversals COPYSERV-72
- rolling upgrade of storage management software INTEL-75
- runtime software
  - package SM84UNIX-4

## S

- Safety Information CONCEPTS-117, COPYSERV-153, INTEL-139, SM84UNIX-117
- sample network, reviewing CONCEPTS-17, INTEL-11
- SAN-attached configuration SM84UNIX-24, SM84UNIX-55, SM84UNIX-71
- SANavigator
  - features INTEL-99
  - installation INTEL-100
  - overview INTEL-99
  - system requirements INTEL-100
- scenarios, critical event COPYSERV-144
- scheduled upgrade of storage management software INTEL-75
- Script Commands CONCEPTS-xiii, COPYSERV-xiii, INTEL-xv, SM84UNIX-xiii

- script editor
  - adding comments to a script CONCEPTS–28
  - using CONCEPTS–27, CONCEPTS–108
  - window CONCEPTS–26
- secondary logical drive CONCEPTS–38
- secondary logical drive errors COPYSERV–86
- security CONCEPTS–110
- segment size, choosing CONCEPTS–92
- sender address configuration CONCEPTS–80
- sending your comments to IBM SM84UNIX–xv
- service and support
  - hardware CONCEPTS–xvi, COPYSERV–xvi, INTEL–xix
  - software CONCEPTS–xvi, COPYSERV–xvi, INTEL–xix
- services offered in the U.S.A. SM84UNIX–119
- set link speed CONCEPTS–xi, COPYSERV–xi, INTEL–xiii, SM84UNIX–xi
- set up host or DNS table INTEL–49
- setting up alert notifications INTEL–103
- setting up the host or DNS table INTEL–48
- setting
  - IP addresses SM84UNIX–14
  - NMS for SNMP notification SM84UNIX–97
- settings, media scan CONCEPTS–47
- Simple Network Management Protocol (SNMP) traps CONCEPTS–17, INTEL–11
- site preparation, Remote Mirror Option COPYSERV–95
- SM concepts guide CONCEPTS–xi, COPYSERV–xi, INTEL–xiii, SM84UNIX–xi
- SM installation and support guide for Linux CONCEPTS–xi, COPYSERV–xi, INTEL–xiii, SM84UNIX–xi
- SM installation and support guide for Novell NetWare CONCEPTS–xi, COPYSERV–xi, INTEL–xiii, SM84UNIX–xi
- SM installation and support guide for Windows 2000 CONCEPTS–xi, COPYSERV–xi, INTEL–xiii, SM84UNIX–xi
- SM installation and support guide for Windows NT CONCEPTS–xi, COPYSERV–xi, INTEL–xiii, SM84UNIX–xi
- SMagent disk space requirements CONCEPTS–9
- SMagent
  - description SM84UNIX–5
  - disk space requirements INTEL–23
  - HP-UX installing SM84UNIX–50
  - installation INTEL–57, INTEL–71
  - installing SM84UNIX–67
  - overview INTEL–6, INTEL–57
  - Solaris installing SM84UNIX–67
  - verifying installation INTEL–57, INTEL–71
  - workaround
    - for changing existing Access LUN mapping INTEL–125
    - for defining additional Access LUN mapping INTEL–125
- SMcli
  - examples CONCEPTS–34
  - overview CONCEPTS–29
  - parameters CONCEPTS–30
- SMcli (*continued*)
  - usage and formatting requirements CONCEPTS–33
  - using CONCEPTS–29
- SMclient CONCEPTS–8
- SMclient disk space requirements INTEL–24
- SMclient
  - AIX installing SM84UNIX–20
  - description SM84UNIX–4
  - disk space requirements INTEL–23
  - HP-UX installing SM84UNIX–49
  - installation procedure INTEL–93
  - installing INTEL–66
  - overview INTEL–6, INTEL–52
  - Solaris installing SM84UNIX–66
  - verifying installation INTEL–66
- SMdevices utility CONCEPTS–11
- SMdevices utility, using INTEL–114, INTEL–117
- SMrepassist utility COPYSERV–60
- SMrepassist utility, using INTEL–115
- SMruntime installation procedure INTEL–93
- SMruntime
  - AIX installing SM84UNIX–20
  - description SM84UNIX–4
  - HP-UX installing SM84UNIX–49
  - Solaris installing SM84UNIX–65
- SMutil disk space requirements INTEL–24
- SMutil
  - description SM84UNIX–5
  - disk space requirements INTEL–23
  - HP-UX installing SM84UNIX–51
  - installation INTEL–59, INTEL–73
  - installation procedure INTEL–94
  - overview INTEL–6, INTEL–59
  - Solaris installing SM84UNIX–68
  - verifying installation INTEL–60, INTEL–73
- SNMP notification SM84UNIX–97
- SNMP traps INTEL–11
- software checklist COPYSERV–118
- software components
  - RDAC CONCEPTS–10
  - SMagent CONCEPTS–9
  - SMclient CONCEPTS–8
- software installation INTEL–89
- software installation process CONCEPTS–xi, COPYSERV–xi, INTEL–xiii, SM84UNIX–xi
- software installation, Remote Mirror Option COPYSERV–95
- software package
  - RDAC SM84UNIX–6
  - SMagent SM84UNIX–5
  - SMclient SM84UNIX–4
  - SMruntime SM84UNIX–4
  - SMutil SM84UNIX–5
- software packages
  - disk space requirements INTEL–25, INTEL–91
  - installing Storage Manager 8.2 Utility INTEL–87
  - installing Storage Manager 8.4 Client INTEL–86
  - installing the host adapter device driver (QL2x00) INTEL–89, INTEL–95
  - installing the LSIMPE.cdr driver INTEL–89

- software requirements
  - AIX SM84UNIX–101
  - HP-UX SM84UNIX–103
  - Solaris SM84UNIX–105
  - VMware ESX Server INTEL–97
- software service and support CONCEPTS–xvi, COPYSERV–xvi, INTEL–xix
- software
  - components, where to install INTEL–12
  - installation
    - Event Monitor INTEL–53
    - in a standard configuration INTEL–51
    - new installation process INTEL–51
    - overview COPYSERV–114
    - SMclient INTEL–52, INTEL–53
    - verifying installation and configuration COPYSERV–118
  - requirements COPYSERV–96
  - supported CONCEPTS–1
- Solaris
  - client software SM84UNIX–65
  - cluster services requirements SM84UNIX–99, SM84UNIX–100
  - configuration of storage subsystem SM84UNIX–69
  - configure the host COPYSERV–29
  - direct-attached configuration SM84UNIX–70
  - firmware
    - requirements SM84UNIX–63
    - upgrading SM84UNIX–70
  - hardware requirements SM84UNIX–63, SM84UNIX–105
  - host software SM84UNIX–67
  - JNI host bus adapter cards SM84UNIX–71, SM84UNIX–72
  - NVSRAM
    - requirements SM84UNIX–63
    - upgrading SM84UNIX–70
  - operating system requirements SM84UNIX–13, SM84UNIX–14
  - RDAC driver
    - installing SM84UNIX–80
    - requirements SM84UNIX–67
  - requirements
    - client software SM84UNIX–65
    - cluster services SM84UNIX–99
    - firmware SM84UNIX–63
    - hardware SM84UNIX–63, SM84UNIX–105
    - host software SM84UNIX–67
    - NVSRAM SM84UNIX–63
    - operating system SM84UNIX–13, SM84UNIX–14
    - RDAC driver SM84UNIX–67
    - software SM84UNIX–105
    - system SM84UNIX–105
  - reusing a FlashCopy logical drive COPYSERV–34
  - SAN-attached configuration SM84UNIX–71
  - SMagent
    - installing SM84UNIX–67
  - SMclient
    - installing SM84UNIX–66
  - SMruntime
    - installing SM84UNIX–65
- Solaris *(continued)*
  - SMutil
    - installing SM84UNIX–68
    - software requirements SM84UNIX–105
    - system requirements SM84UNIX–105
    - volumes, redistributing in case of failure SM84UNIX–93
  - source logical drive CONCEPTS–38
  - source logical drive, re-copying COPYSERV–68
  - source logical drive
    - FlashCopy COPYSERV–49, COPYSERV–50
    - selecting COPYSERV–50
  - Specify Array Parameters panel COPYSERV–15
  - Specify FlashCopy Repository Logical Drive Capacity panel COPYSERV–18
  - Specify Names panel COPYSERV–16
  - standard (noncluster) configuration
    - for Windows 2000
      - creating logical drives INTEL–111
      - deleting logical drives INTEL–111
    - for Windows NT
      - creating logical drives INTEL–109
      - deleting logical drives INTEL–109
    - for Windows Server 2003
      - creating logical drives INTEL–112
      - deleting logical drives INTEL–113
    - upgrading from Windows NT 4.0 to Windows 2000 INTEL–79
    - upgrading to Windows Server 2003 INTEL–82
  - starpubs SM84UNIX–xv
  - start percentage, cache flush CONCEPTS–44
  - start server CONCEPTS–xi, COPYSERV–xi, INTEL–xiii, SM84UNIX–xi
  - starting host-agent software INTEL–119
  - starting Subsystem Management INTEL–104
  - static drive letters, assigning INTEL–54, INTEL–68
  - status of FlashCopy logical drive COPYSERV–36
  - status of premium features, viewing COPYSERV–4
  - status
    - determining COPYSERV–115
    - Disabled/ Deactivated COPYSERV–115
    - Disabled/Activated COPYSERV–115
    - Enabled/Activated COPYSERV–115
    - Enabled/Deactivated COPYSERV–115
  - stop percentage, cache flush CONCEPTS–44
  - stopping host-agent software INTEL–118
  - Storage Array menu CONCEPTS–24
  - storage expansion unit installation guide
    - CONCEPTS–xi, COPYSERV–xi, INTEL–xiii, SM84UNIX–xi
  - storage management software
    - administrators privilege INTEL–23
    - Enterprise Management window CONCEPTS–20
    - hardware requirements
      - BOOTP server CONCEPTS–11, INTEL–20
      - fabric switches INTEL–21
      - managed hub INTEL–21
      - management station INTEL–22
    - install INTEL–89
    - installation INTEL–51, INTEL–65
    - installation procedure INTEL–91

- storage management software *(continued)*
  - installation requirements CONCEPTS-11
  - new terminology CONCEPTS-2, INTEL-4
  - rolling upgrade INTEL-75
  - scheduled upgrade INTEL-75
  - Subsystem Management window CONCEPTS-22
  - uninstalling components INTEL-116, INTEL-119
  - using INTEL-109
- storage management station SM84UNIX-1
- Storage Manager 8.4 Agent (SMagent) INTEL-6
- Storage Manager 8.4 client CONCEPTS-8
- Storage Manager 8.4 Client (SMclient) INTEL-6
- Storage Manager 8.4 Utility (SMutil) INTEL-6
- Storage Manager 8.4
  - limitations INTEL-4
- Storage Manager Linux software INTEL-7
- Storage Manager NetWare software INTEL-7
- Storage Manager software
  - installation sequence SM84UNIX-6
  - introduction SM84UNIX-1
  - software packages SM84UNIX-4
- Storage Manager Utility (SMutil) CONCEPTS-11
- Storage Manager Windows software INTEL-5
- storage partition CONCEPTS-7
- storage partition topology, defined CONCEPTS-63
- storage partition topology
  - defined CONCEPTS-67
- storage partition
  - configuration CONCEPTS-61
  - creating CONCEPTS-63, CONCEPTS-67
  - defined
    - mappings CONCEPTS-67
    - topology CONCEPTS-67
  - described CONCEPTS-63
  - feature key CONCEPTS-66
  - logical drive-to-LUN mapping CONCEPTS-68
  - major steps to creating CONCEPTS-81
  - Mappings window CONCEPTS-67
- storage partitioning CONCEPTS-7
- storage partitioning
  - defining COPYSERV-127
  - overview CONCEPTS-65
  - use with the Remote Mirror Option COPYSERV-91
  - using with VolumeCopy COPYSERV-70
- storage partitions
  - configuring CONCEPTS-108
- storage server installation guide CONCEPTS-xi, COPYSERV-xi, INTEL-xiii, SM84UNIX-xi
- storage subsystem components CONCEPTS-6
- storage subsystem failures
  - recovery COPYSERV-129
- storage subsystem management
  - direct (out-of-band) CONCEPTS-14
  - host-agent CONCEPTS-15
  - overview CONCEPTS-13
- storage subsystem names
  - recording INTEL-30
- storage subsystem profile, saving SM84UNIX-98
- storage subsystem profile
  - Mirroring Properties window COPYSERV-124
  - overview COPYSERV-123
- storage subsystem profile *(continued)*
  - View Associated Components window COPYSERV-124
- storage subsystem
  - adding to SMclient
    - AIX SM84UNIX-21
    - HP-UX SM84UNIX-52
    - Solaris SM84UNIX-70
  - cluster services SM84UNIX-99
  - component failures COPYSERV-142
  - configuration CONCEPTS-59
  - configuring
    - AIX SM84UNIX-20
    - HP-UX SM84UNIX-52
    - procedures SM84UNIX-95
    - Solaris SM84UNIX-69
  - creating logical drives CONCEPTS-59
  - description CONCEPTS-11
  - direct-management INTEL-9
  - discovery of host-agent managed INTEL-115
  - failure notification CONCEPTS-74
  - hardware requirements CONCEPTS-11, INTEL-20
  - information record INTEL-133
  - initial automatic discovery SM84UNIX-95
  - introduction SM84UNIX-1
  - logical drives
    - identifying by operating system device names SM84UNIX-37
  - maintaining and monitoring CONCEPTS-73
  - maintaining in a management domain CONCEPTS-73
  - management methods INTEL-7
  - management methods
    - direct (out-of-band) SM84UNIX-8
    - host-agent (in-band) SM84UNIX-7
  - management tasks SM84UNIX-98
  - managing using the graphical user interface CONCEPTS-19
  - naming INTEL-29, INTEL-104
  - overview INTEL-63
  - password protection configuration CONCEPTS-58
  - performing initial automatic discovery INTEL-100
  - performing management tasks INTEL-108
  - profile, saving INTEL-105
  - quick reference status icon CONCEPTS-74
  - renaming SM84UNIX-97
  - status quick reference CONCEPTS-73
  - tuning options available CONCEPTS-89
  - updating the firmware CONCEPTS-75
- storage subsystems maintenance
  - in a management domain CONCEPTS-73
  - overview CONCEPTS-73
- storage subsystems
  - coexisting CONCEPTS-18
  - configuring CONCEPTS-107
  - directly managed CONCEPTS-14
  - discovery of host-agent managed INTEL-118
  - host-agent managed CONCEPTS-15
  - tuning CONCEPTS-89
- storage- management software
  - installation requirements INTEL-19

- storage-partition mapping preference
  - defined CONCEPTS–65
- storage-subsystem failures, recovering from
  - CONCEPTS–84
- Subsystem Management window CONCEPTS–75
- Subsystem Management window
  - Advanced menu CONCEPTS–26
  - component of SMclient CONCEPTS–8, INTEL–6
  - Controller menu CONCEPTS–25
  - description SM84UNIX–5
  - Drive menu CONCEPTS–26
  - event log CONCEPTS–93
  - help INTEL–1
  - Help CONCEPTS–1
  - Help menu CONCEPTS–26
  - Logical/Physical View CONCEPTS–22
  - Mappings menu CONCEPTS–24
  - Mappings View CONCEPTS–23
  - menus CONCEPTS–23
  - monitoring storage subsystems with CONCEPTS–73
  - online help SM84UNIX–2
  - overview CONCEPTS–22
  - Storage Array menu CONCEPTS–24
  - tabs CONCEPTS–22
  - View menu CONCEPTS–24
  - Volume Group menu CONCEPTS–25
  - Volume menu CONCEPTS–25
- subsystem performance COPYSERV–54
- support, operating system INTEL–121
- supported configurations CONCEPTS–57
- supported features COPYSERV–2
- supported machine types INTEL–4
- supported operating systems
  - Microsoft® Windows NT INTEL–xiii
  - Novell NetWare 6.0 INTEL–xiii
  - Red Hat Linux Advanced Server INTEL–xiii
  - SuSE Linux Enterprise Server INTEL–xiii
  - Windows Server 2003 INTEL–xiii
- supported software CONCEPTS–1
- SuSE Linux Enterprise Server INTEL–xiii
- switch failures
  - recovery COPYSERV–128
- switch issues, troubleshooting COPYSERV–141
- switch zoning overview COPYSERV–96
- switch zoning
  - Campus configuration COPYSERV–105
  - Highest Availability Campus configuration COPYSERV–99
  - Intra-site configuration COPYSERV–110
  - Remote Mirror Option
    - Campus configuration COPYSERV–105
- switch
  - in a SAN-attached configuration SM84UNIX–24, SM84UNIX–55, SM84UNIX–71
  - modifying JNI HBA settings SM84UNIX–73, SM84UNIX–75
  - zoning SM84UNIX–24, SM84UNIX–55, SM84UNIX–71
- synchronization priority level, changing
  - COPYSERV–124
- system administration CONCEPTS–110

- system requirements
  - AIX SM84UNIX–101
  - firmware INTEL–23
  - hardware INTEL–20
  - HP-UX SM84UNIX–103
  - Solaris SM84UNIX–105
  - Windows INTEL–23

## T

- target logical drive CONCEPTS–38
- target logical drive read-only attribute option
  - COPYSERV–67
- target logical drive
  - selecting COPYSERV–51
- task reference CONCEPTS–107
- tasks by documentation title CONCEPTS–xii, CONCEPTS–113, COPYSERV–xii, COPYSERV–147, INTEL–xiv, INTEL–135, SM84UNIX–xii, SM84UNIX–113
- tasks, FlashCopy COPYSERV–36
- TCP/IP protocol verification INTEL–45, INTEL–48
- TCP/IP protocol, verify INTEL–49
- technical assistance CONCEPTS–xiv, COPYSERV–xiv, INTEL–xvii
- terminology CONCEPTS–2, INTEL–4
- topological elements, when to define CONCEPTS–63
- Topology view
  - described CONCEPTS–67
  - host group with specific mappings CONCEPTS–69
  - results CONCEPTS–69
- trademarks CONCEPTS–119, COPYSERV–155, INTEL–141, SM84UNIX–119
- troubleshooting
  - critical events COPYSERV–78
  - general COPYSERV–75
  - inappropriate fabric configurations COPYSERV–141
  - Remote Mirror critical event scenarios
    - COPYSERV–144
  - Remote Mirror critical events COPYSERV–143
  - Remote Mirror critical events table COPYSERV–144
  - Remote Mirror Option COPYSERV–135
  - storage subsystem component failures
    - COPYSERV–142
  - switch issues COPYSERV–141
  - VolumeCopy COPYSERV–75

## U

- unconfigured and free-capacity nodes CONCEPTS–59
- unconfigured capacity CONCEPTS–7
- uninstall
  - existing storage subsystem INTEL–92
  - Storage Manager INTEL–91
- uninstalling storage-management software components
  - INTEL–119
- Universal Xport device INTEL–8, INTEL–26
- UNIX BOOTP server CONCEPTS–11
- UNIX BOOTP server
  - hardware requirements INTEL–20
  - setting up INTEL–44



- Unresponsive status CONCEPTS–74
- upgrades, firmware COPYSERV–147
- upgrading
  - AIX
    - NVSRAM SM84UNIX–22
  - from Windows NT 4.0 to Windows 2000
    - in a cluster configuration INTEL–80
    - in a standard configuration INTEL–79
  - HP-UX
    - firmware SM84UNIX–53
    - NVSRAM SM84UNIX–53
  - rolling upgrade
    - Windows NT 4.0 and Windows 2000 INTEL–77
    - Windows Server 2003 INTEL–79
  - scheduled upgrade
    - Windows NT 4.0 and Windows 2000 INTEL–76
    - Windows Server 2003 INTEL–77
  - Solaris
    - firmware SM84UNIX–70
    - NVSRAM SM84UNIX–70
  - to Windows Server 2003
    - in a cluster configuration INTEL–82
    - in a standard configuration INTEL–82
- user tasks
  - FAStT Storage Manager CONCEPTS–xiii, COPYSERV–xiii, INTEL–xv, SM84UNIX–xiii
  - FAStT600 Fibre Channel Storage Server CONCEPTS–116, COPYSERV–152, INTEL–138, SM84UNIX–116
  - FAStT700 Fibre Channel Storage Server CONCEPTS–115, COPYSERV–151, INTEL–137, SM84UNIX–115
  - FAStT900 Fibre Channel Storage Server CONCEPTS–113, COPYSERV–149, INTEL–135, SM84UNIX–113
  - related documents CONCEPTS–117, COPYSERV–153, INTEL–139, SM84UNIX–117
- using the documentation INTEL–xviii
- using
  - hot\_add utility INTEL–114
  - SMdevices utility INTEL–114
  - SMrepassist utility INTEL–115
- utility software
  - package SM84UNIX–5

## V

- variable settings for JNI adapter cards SM84UNIX–72
- verify server operation w/ LEDs CONCEPTS–xi, COPYSERV–xi, INTEL–xiii, SM84UNIX–xi
- verifying installation
  - Event Monitor INTEL–67
  - RDAC INTEL–55, INTEL–69
  - SMagent INTEL–57, INTEL–71
  - SMclient INTEL–66
  - SMutil INTEL–60, INTEL–73
- verifying
  - default host type INTEL–106
- VERITAS Cluster Server SM84UNIX–99
- VERITAS Volume Manager SM84UNIX–6, SM84UNIX–99

- View Associated Components window COPYSERV–124
- View menu CONCEPTS–24
- VMware ESX Server INTEL–xiii
- VMware ESX Server load balancing INTEL–131
- VMware ESX Server logical volume labels INTEL–131
- VMware ESX Server logical volumes unrecognized INTEL–131
- Volume Group menu CONCEPTS–25
- Volume menu CONCEPTS–25
- VolumeCopy option, stopping COPYSERV–69
- VolumeCopy
  - and FlashCopy COPYSERV–71
  - and Other Premium Features COPYSERV–70
  - and storage partitioning COPYSERV–70
  - and the Remote Mirror Option COPYSERV–71
  - backing up data CONCEPTS–50
  - changing copy priorities COPYSERV–66
  - copy status COPYSERV–64
  - copying data for greater access CONCEPTS–49
  - Create Copy wizard COPYSERV–48
  - Create Copy wizard
    - creating a VolumeCopy COPYSERV–49
    - selecting the source logical drive COPYSERV–50
    - selecting the target logical drive COPYSERV–51
    - setting the copy priority COPYSERV–54
    - the Preview panel COPYSERV–55
    - viewing drives COPYSERV–56
  - creating COPYSERV–49
  - critical events COPYSERV–78
  - description CONCEPTS–48
  - enabling COPYSERV–48
  - general troubleshooting COPYSERV–75
  - locating associated logical drives COPYSERV–61
  - managing COPYSERV–63
  - overview CONCEPTS–49, COPYSERV–47
  - re-copying the source logical drive in a VolumeCopy pair COPYSERV–68
  - removing copy pairs COPYSERV–70
  - restoring FlashCopy logical drive data to the base logical drive CONCEPTS–50
  - restrictions COPYSERV–63
  - role reversals COPYSERV–72
  - selecting the source logical drive COPYSERV–50
  - selecting the target logical drive COPYSERV–51
  - setting the copy priority COPYSERV–54
  - setting the target logical drive read-only attribute option COPYSERV–67
  - SMrepassist utility COPYSERV–60
  - stopping a VolumeCopy option COPYSERV–69
  - troubleshooting COPYSERV–75
  - used with FlashCopy COPYSERV–48
  - viewing properties COPYSERV–65
  - with AIX host COPYSERV–56
  - with HP-UX host COPYSERV–57
  - with Solaris host COPYSERV–57
  - with Windows host COPYSERV–60
- volumes
  - redistributing in case of failure SM84UNIX–45, SM84UNIX–61, SM84UNIX–93

## W

- warning level, repository capacity threshold  
COPYSERV-8
- Web sites INTEL-xviii, SM84UNIX-xiv, SM84UNIX-4,  
SM84UNIX-18, SM84UNIX-25
- who should read this document CONCEPTS-xi,  
INTEL-xiii
- Who should read this document COPYSERV-2
- window, script editor CONCEPTS-26
- Windows 2000
  - DHCP server
    - installing the DHCP Manager INTEL-38
    - setting up INTEL-38
  - limitations INTEL-121
- Windows NT
  - DHCP server
    - installing the DHCP Manager INTEL-33
    - setting up INTEL-33
  - Disk Administrator utility INTEL-109, INTEL-111
  - limitations INTEL-121
- Windows Server 2003
  - DHCP server
    - creating a scope INTEL-40
    - installing the DHCP Manager INTEL-40
    - setting up INTEL-40
  - limitations INTEL-121
- Windows software
  - Storage Manager INTEL-5
- Windows
  - requirements INTEL-23
  - reusing a FlashCopy logical drive COPYSERV-35
  - SMrepassist utility COPYSERV-60
- workaround
  - direct-management method INTEL-124
  - SMagent
    - for changing existing Access LUN mapping  
INTEL-125
    - for defining additional Access LUN mapping  
INTEL-125
- World Wide Web, getting help and information  
CONCEPTS-xv, COPYSERV-xv, INTEL-xviii
- write cache mirroring
  - described CONCEPTS-44
  - how to enable CONCEPTS-44
- write caching
  - and data loss CONCEPTS-44
  - and performance CONCEPTS-44
  - enabling CONCEPTS-91

## Z

- zoning switches SM84UNIX-24, SM84UNIX-55,  
SM84UNIX-71

---

## Notices

IBM may not offer the products, services, or features discussed in this document in other countries. Consult your local IBM representative for information on the products and services currently available in your area. Any reference to an IBM product, program, or service is not intended to state or imply that only that IBM product, program, or service may be used. Any functionally equivalent product, program, or service that does not infringe any IBM intellectual property right may be used instead. However, it is the user's responsibility to evaluate and verify the operation of any non-IBM product, program, or service.

IBM may have patents or pending patent applications covering subject matter described in this document. The furnishing of this document does not give you any license to these patents. You can send license inquiries, in writing, to:

*IBM Director of Licensing  
IBM Corporation  
North Castle Drive  
Armonk, NY 10504-1785  
U.S.A.*

INTERNATIONAL BUSINESS MACHINES CORPORATION PROVIDES THIS PUBLICATION "AS IS" WITHOUT WARRANTY OF ANY KIND, EITHER EXPRESS OR IMPLIED, INCLUDING, BUT NOT LIMITED TO, THE IMPLIED WARRANTIES OF NON-INFRINGEMENT, MERCHANTABILITY OR FITNESS FOR A PARTICULAR PURPOSE. Some jurisdictions do not allow disclaimer of express or implied warranties in certain transactions, therefore, this statement may not apply to you.

This information could include technical inaccuracies or typographical errors. Changes are periodically made to the information herein; these changes will be incorporated in new editions of the publication. IBM may make improvements and/or changes in the product(s) and/or the program(s) described in this publication at any time without notice.

Any references in this publication to non-IBM Web sites are provided for convenience only and do not in any manner serve as an endorsement of those Web sites. The materials at those Web sites are not part of the materials for this IBM product, and use of those Web sites is at your own risk.

IBM may use or distribute any of the information you supply in any way it believes appropriate without incurring any obligation to you.

---

## Trademarks

The following terms are trademarks of International Business Machines Corporation in the United States, other countries, or both:

IBM  
AIX

Netfinity  
TotalStorage

Microsoft, Windows, and Windows NT are trademarks of Microsoft Corporation in the United States, other countries, or both.

UNIX is a registered trademark of The Open Group in the United States and other countries.

Other company, product, or service names may be the trademarks or service marks of others.

---

## How to send your comments

Your feedback is important to help us provide the highest quality of information. If you have any comments about this document, please either fill out the Readers' Comments form (RCF) at the back of this document and give it to an IBM representative, or submit them in one of the following ways:

- E-mail

Submit your comments over the Internet to:

starpubs@us.ibm.com

Be sure to include the name and order number of the document and, if applicable, the specific location of the text that you are commenting on, such as a page number or table number.

- fax

Submit the completed Readers' Comments form (RCF) at the back of this document by fax to:

1-800-426-6209

- Mail

Fill out the Readers' Comments form (RCF) at the back of this document and return it by mail. If the RCF Business Reply Mailer has been removed, you may address your comments to:

International Business Machines Corporation  
RCF Processing Department  
Dept. M86/Bldg. 050-3  
5600 Cottle Road  
San Jose, CA 95193-0001  
U.S.A.

# Readers' comments — we would like to hear from you

IBM TotalStorage FASTT Storage Manager Version 8.4  
Library Guide and Common Index

Publication No. GC26-7600-00

Overall, how satisfied are you with the information in this book?

	Very Satisfied	Satisfied	Neutral	Dissatisfied	Very Dissatisfied
Overall satisfaction	<input type="checkbox"/>	<input type="checkbox"/>	<input type="checkbox"/>	<input type="checkbox"/>	<input type="checkbox"/>

How satisfied are you that the information in this book is:

	Very Satisfied	Satisfied	Neutral	Dissatisfied	Very Dissatisfied
Accurate	<input type="checkbox"/>	<input type="checkbox"/>	<input type="checkbox"/>	<input type="checkbox"/>	<input type="checkbox"/>
Complete	<input type="checkbox"/>	<input type="checkbox"/>	<input type="checkbox"/>	<input type="checkbox"/>	<input type="checkbox"/>
Easy to find	<input type="checkbox"/>	<input type="checkbox"/>	<input type="checkbox"/>	<input type="checkbox"/>	<input type="checkbox"/>
Easy to understand	<input type="checkbox"/>	<input type="checkbox"/>	<input type="checkbox"/>	<input type="checkbox"/>	<input type="checkbox"/>
Well organized	<input type="checkbox"/>	<input type="checkbox"/>	<input type="checkbox"/>	<input type="checkbox"/>	<input type="checkbox"/>
Applicable to your tasks	<input type="checkbox"/>	<input type="checkbox"/>	<input type="checkbox"/>	<input type="checkbox"/>	<input type="checkbox"/>

Please tell us how we can improve this book:

Thank you for your responses. May we contact you?  Yes  No

When you send comments to IBM, you grant IBM a nonexclusive right to use or distribute your comments in any way it believes appropriate without incurring any obligation to you.

\_\_\_\_\_  
Name

\_\_\_\_\_  
Address

\_\_\_\_\_  
Company or Organization

\_\_\_\_\_  
Phone No.



Fold and Tape

Please do not staple

Fold and Tape



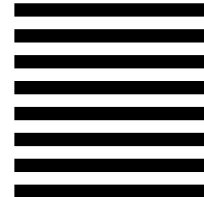
NO POSTAGE  
NECESSARY  
IF MAILED IN THE  
UNITED STATES

# BUSINESS REPLY MAIL

FIRST-CLASS MAIL PERMIT NO. 40 ARMONK, NEW YORK

POSTAGE WILL BE PAID BY ADDRESSEE

International Business Machines Corporation  
RCF Processing Department  
Dept. M86/Building 50-3  
5600 Cottle Road  
San Jose, CA  
U.S.A. 95193-0001



Fold and Tape

Please do not staple

Fold and Tape





Printed in USA

GC26-7600-00

