

Submit Comment	To Views	Expand	Collapse	QMX Help & Support	Printer Friendly
--------------------------------	--------------------------	------------------------	--------------------------	----------------------------------------	----------------------------------



STG - Systems

Pack Instructions e325 / e326 Full-Length [Subscribe](#)..[Unsubscribe](#)
1U (MT 8835, 8848, 7969)
No. WW-P-00985 Rev. 9 Production
Date: 05/22/2006
Owner: Jeffrey Miller
[Online Version is the Master](#)

NOTE: This document is designed to be used online. You are responsible to use only the “Production” version online.

IMPORTANT NOTICE: The Federal Aviation Administration requires certification that packages shipped by air do not contain explosives, hazardous materials, incendiaries or other destructive devices. Therefore, just prior to sealing the carton, you must inspect its contents to confirm that it contains only parts specified on the IBM bill of materials. If the contents meet specifications, then seal the carton with IBM logo tape or another tamper evident indicator specified on the bill of materials. The logo tape or tamper evident seal will indicate that the carton can be certified to meet FAA standards for air shipment. If you discover parts or devices that appear suspicious (whether or not potentially explosive), carefully secure the carton on the line and notify IBM management promptly.

- Information contained in this document is for reference purposes only.
- Process and Part Numbers may vary in each manufacturing location.
- Refer to local site procedures and Bill of Materials for any substitutions.
- No deviation is to be made to the overall assembly without prior written approval from the responsible Packaging Engineer.

Table of Contents

- Section 1 - Applicable Systems, MTM Table
- Section 2 - Unit Packaging
- Section 3 - Manufacturing Palletization
- Section 4 - Distribution
- Section 5 - Material Listing (BOM)

Section 1 - Applicable Systems, MTM Listing

These packaging instructions apply to the following machine types:

Server

8654

8672

8674

8675

8676

8830

8835

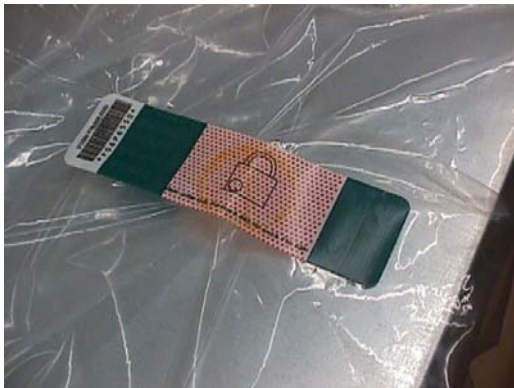
7969

8848

Section 2 - Unit Packaging

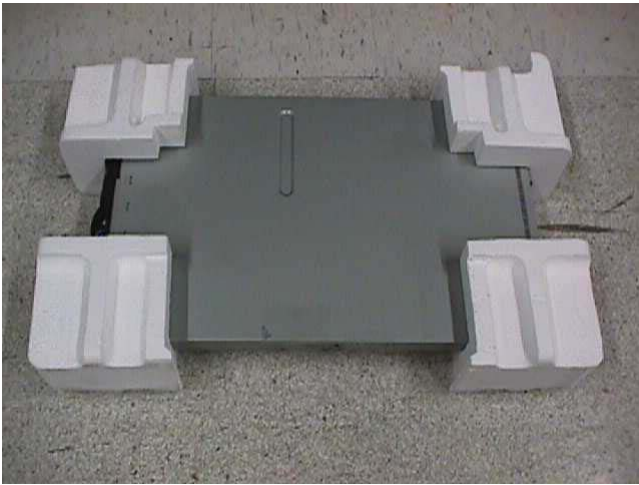
2.1 - Assemble carton 39Y7686 (server) and tape the bottom flaps.

2.2 - Place bag 32R0130 onto the unit. Seal bag opening closed with padlock label 06P6550.

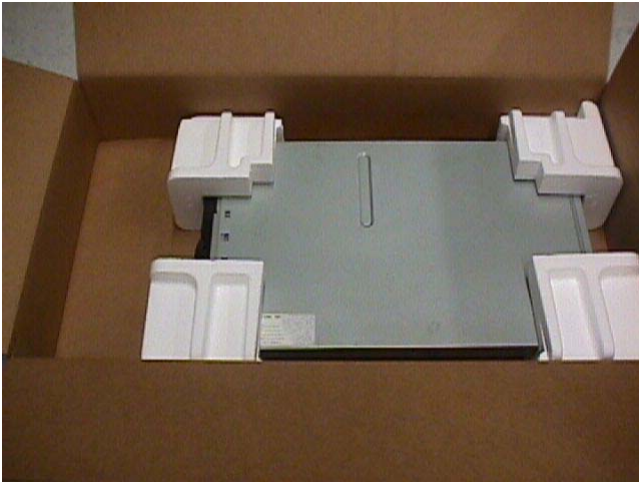


2.3 - Place cushions 25P1048 and 25P1049 onto the unit as shown. **Note: the bag is removed to show the unit orientation.**

NOTE: When facing the right side of the machine, as shown, the 25P1049 are placed on the near side (right side of the unit) and 25P1048 are placed on the far side (left side of the unit).

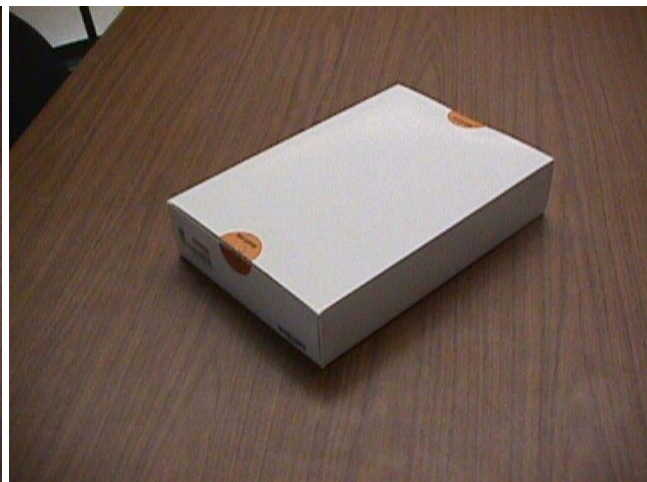


2.4 - Place the unit, with the cushions, down into the box as shown.

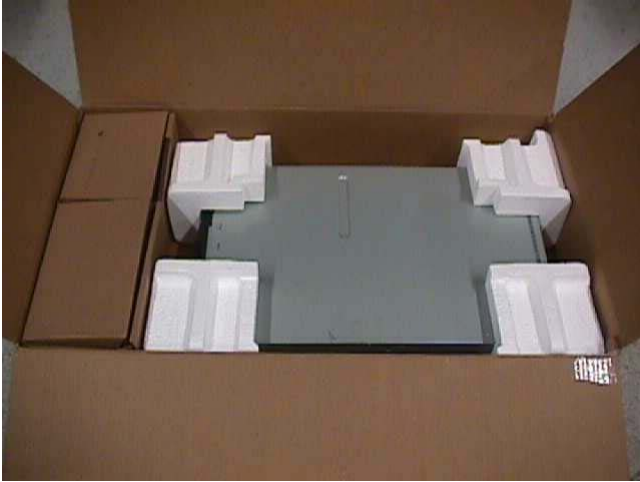


If the unit has a Matrox card: open the right side of the shipgroup and insert the cable and pubs from the Matrox box as shown below. If the unit does not have the Matrox card place the shipgroup into the carton as shown below.

Note: The right side of this shipgroup can also be used to fulfill CTO orders.



2.5 - After shipgroup has been filled and sealed, put the shipgroup to the left, against the front of the machine as shown below.



NOTE: Do NOT place extra shipgroup items in voids around the system. Materials placed in these areas will result in damage to the system.



2.6 - Place the rail kit into the recessed area of cushion set , 25P1048, as shown.



2.7 - For PWS place the keyboard on top of the system as shown using the cutouts in cushion set 25P1048 to guide the placement.

Note: Server models do not ship with a keyboard, only PWS



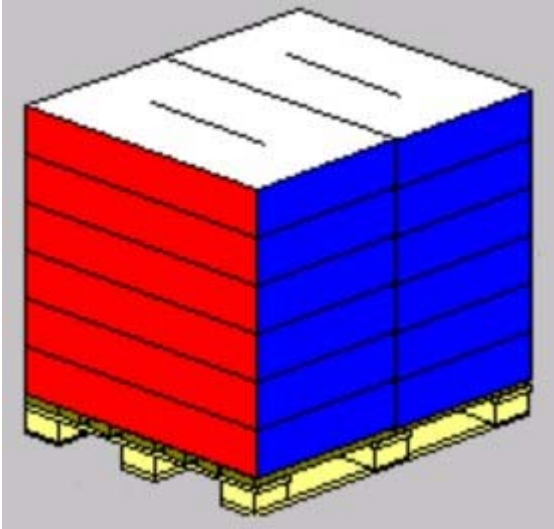
2.8 - Close flaps and seal carton as shown using IBM logo tape.



Section 3 - Manufacturing Palletization

3.1 - Worldwide Palletization

3.1.1 - Place up to 12 systems on a full size pallet (6038887) in even quantities.

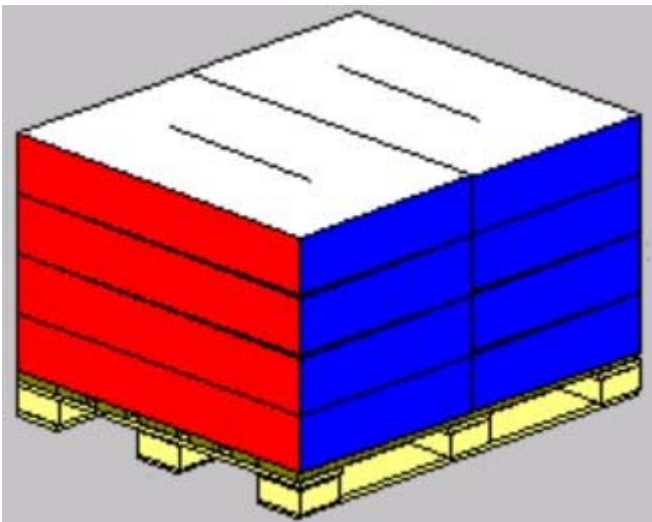


3.1.2 - Secure load to pallet utilizing "Best of Breed" palletization methods. See 92F6168 - "Best of Breed" Pallet Unitization or QMX document P-04146.

3.1.3 - Place two pallet labels (33G6283) on the front and left sides of the pallet load.

3.2 - EMEA Palletization

3.2.1 - Place up to 8 systems on a full size pallet (6038887) in even quantities.



3.2.2 - Secure load to pallet (or half pallet) utilizing materials detailed out in Pkg BOM.

3.2.3 - Place two pallet labels (33G6283) on the front and left sides of the pallet load.

Section 4 - Distribution

NOTE: All units will be received into Distribution as indicated above in Section 3, Manufacturing Palletization, and are approved to be stacked 4 pallets high.

Use pallet configuration table provided below to determine pallet and empty box usage.

Worldwide

Quantity	Half Pallet	Full Pallet	Empty Box w/ label
1-5	X		
6		X	
7		X	1
8		X	
9		X	1
10		X	
11		X	1
12		X	

EMEA

Quantity	Half Pallet	Full Pallet	Empty Box w/ label
1-5	X		
6		X	
7		X	1
8		X	

4.2 - Label load for shipment as necessary.

Section 5 - Materials Listing (BOM)

Server Systems
WW Pkg BOM - 32R0037
WW Common Parts -

32R0048
39Y7686 - Server Carton
25P1048 - Cushion
25P1049 - Cushion
32R0130 - Bag
06P6550 - Padlock Label

- ▶ **General Information**
- ▶ **Summary of Changes**
- ▼ **Approval Information**

Date Approved	Approved By
05/22/2006	See Library Control database for approval information.

© 2006 IBM Corporation, All Rights Reserved Worldwide

End of Document
